

Master Plan of Countywide Bikeways

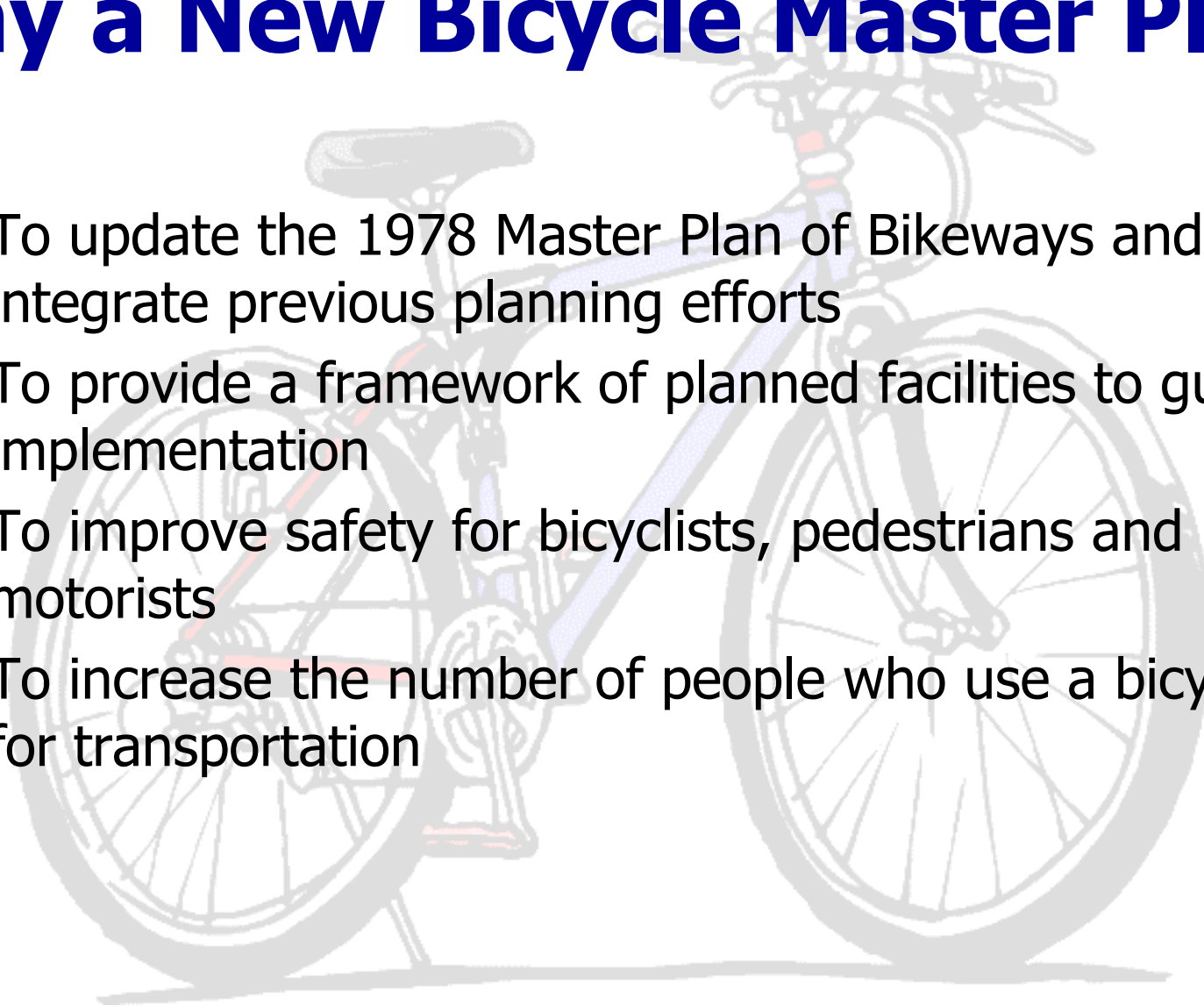
Washington Regional Bicycle and
Pedestrian Subcommittee

July 15, 2003

Chuck Kines, Bikeways Planner
M-NCPPC, Montgomery County Department of Park and Planning

Why a New Bicycle Master Plan?

- To update the 1978 Master Plan of Bikeways and integrate previous planning efforts
- To provide a framework of planned facilities to guide implementation
- To improve safety for bicyclists, pedestrians and motorists
- To increase the number of people who use a bicycle for transportation



Plan Scope



- A plan for utilitarian bicycling
- Maintain a countywide perspective (“Countywide Bikeways”)
- Provide access and connections to major destinations and adjoining jurisdictions
- Focus on bicycle-transit connections
- Focus on implementation
- Incorporate contemporary design standards
- Address bicycle education and encouragement

Countywide Bikeway Network



- Forms the basic framework for the County's bikeway network
- Expected to carry substantial portion of long distance on-road/along-road bicycle traffic
- Provides a balance of on-road and off-road facilities
- Identifies certain roadway corridors for "dual bikeways" (both on-road and off-road)


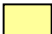


Types of Countywide Bikeways

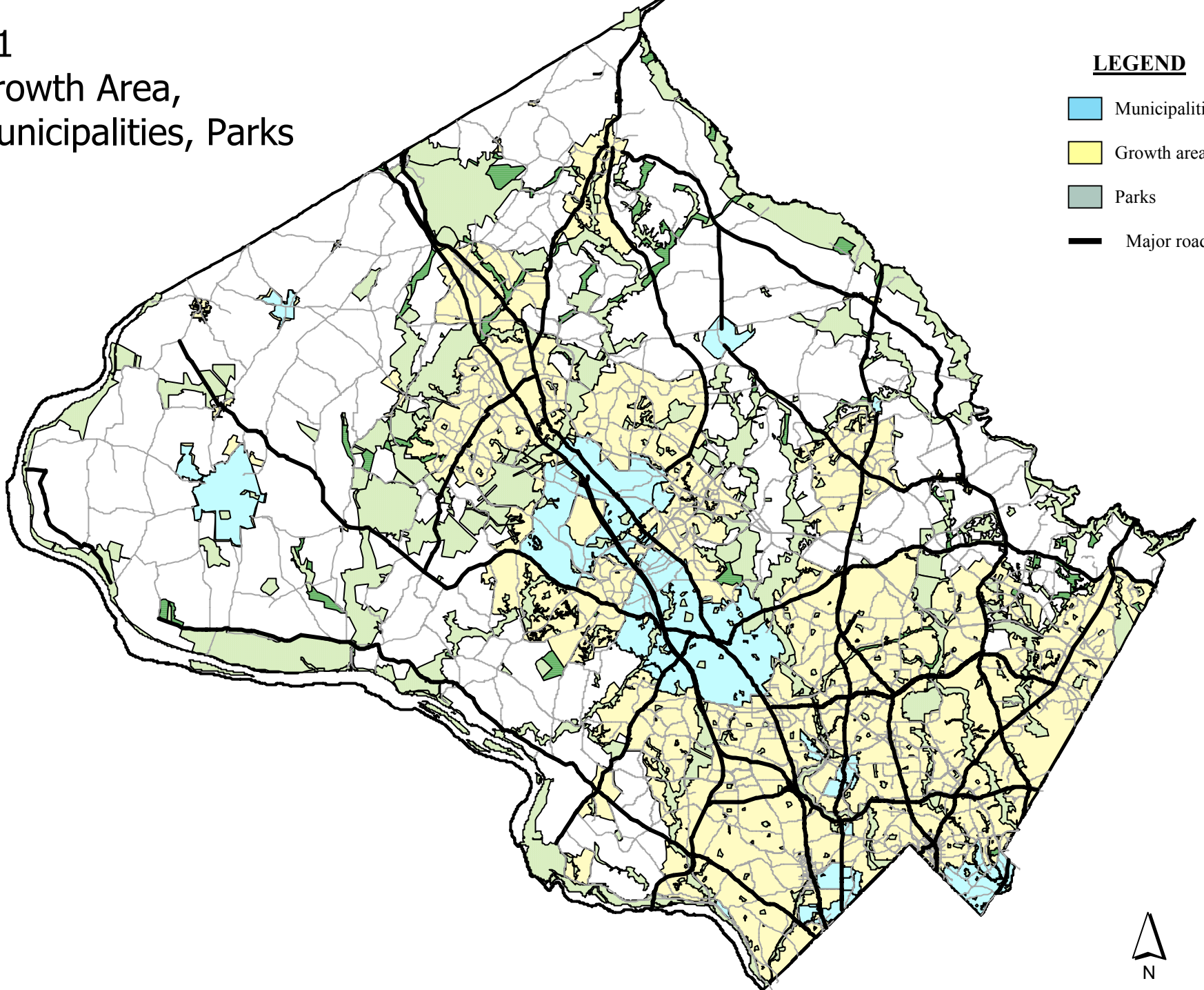


- Existing, planned or proposed shared use paths (formerly called “class I bikeway”)
- Existing, planned or proposed bike lanes (class II bikeway)
- Existing, planned or proposed signed shared roadways (class III bikeway) that provide key connections to transit, activity or employment centers
- Existing or proposed hiker-biker trails complement the Countywide bikeway system

#1 Growth Area, Municipalities, Parks

LEGEND

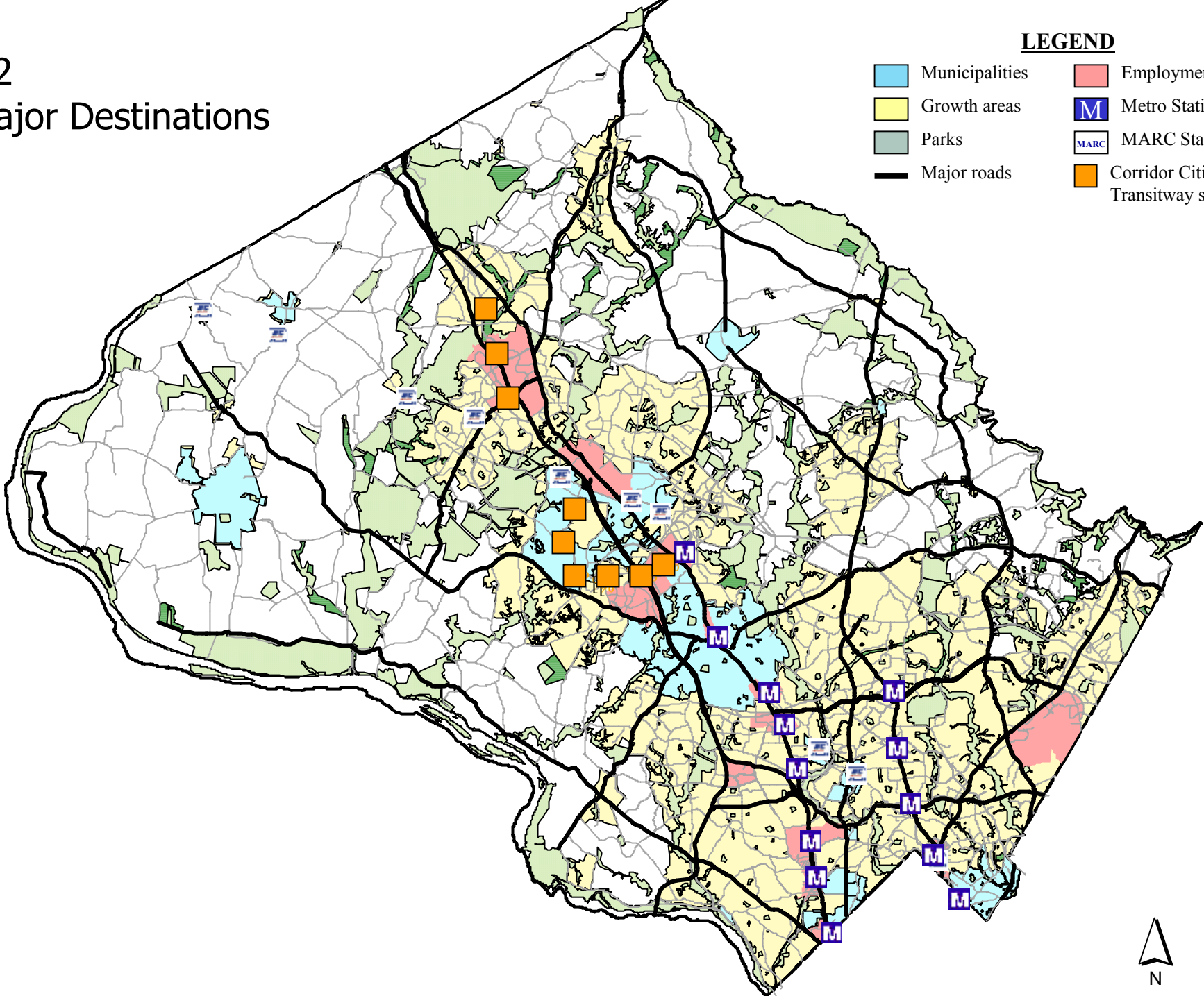
-  Municipalities
-  Growth areas
-  Parks
-  Major roads



#2 Major Destinations

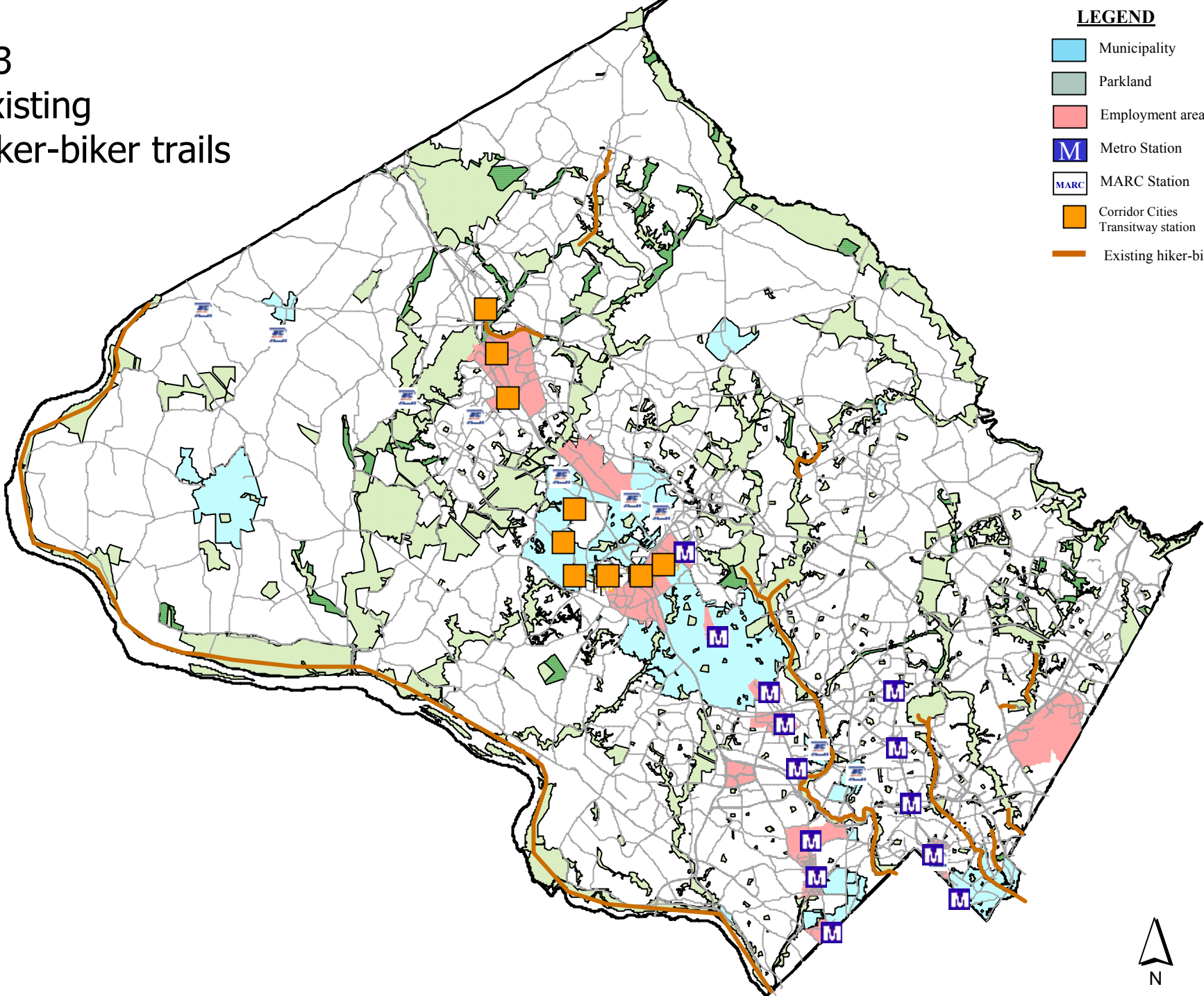
LEGEND

- Municipalities
- Growth areas
- Parks
- Major roads
- Employment areas
- Metro Stations
- MARC Stations
- Corridor Cities
Transitway stops



#3 Existing hiker-biker trails

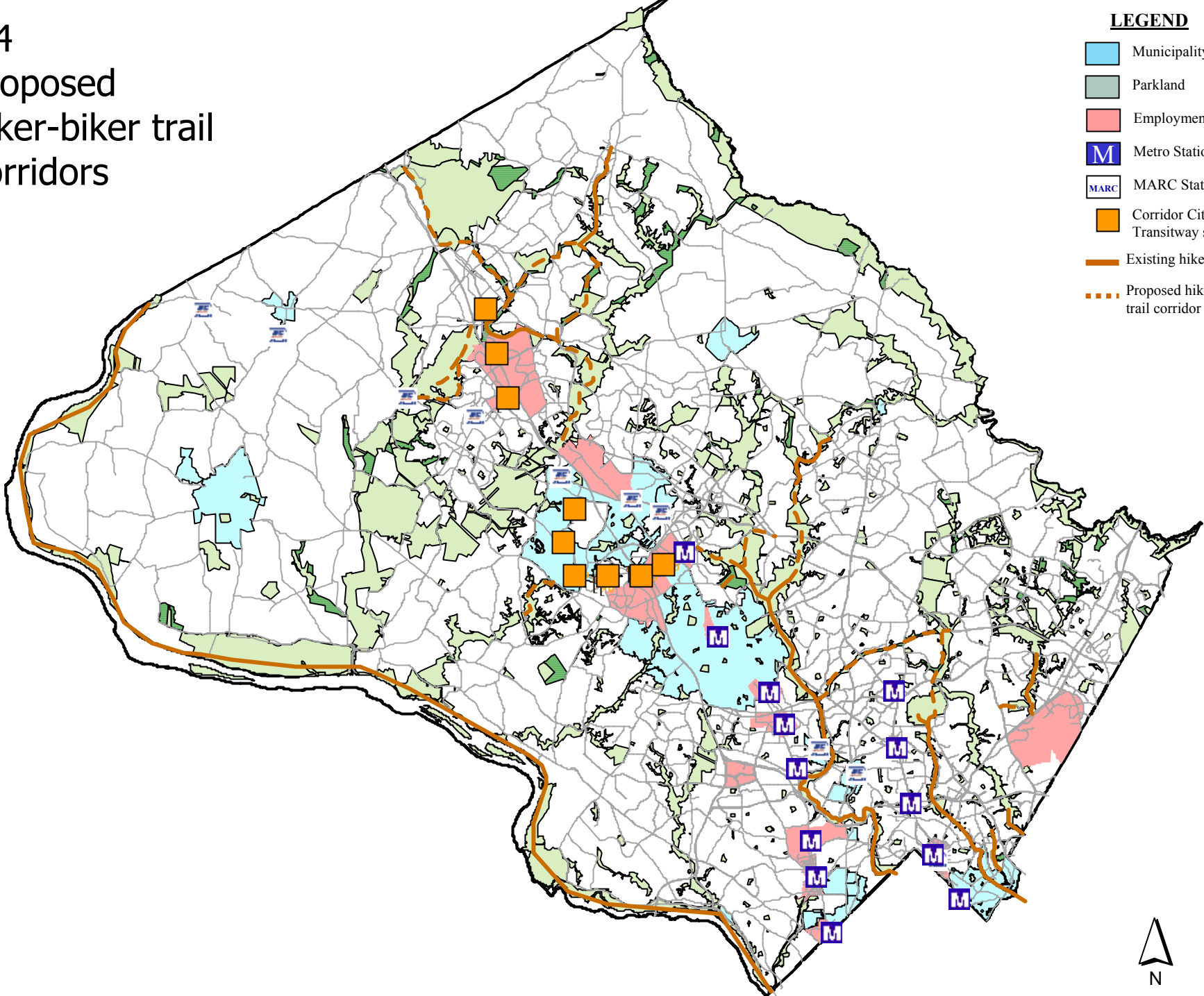
- LEGEND**
- Municipality
 - Parkland
 - Employment areas
 - M Metro Station
 - MARC Station
 - Corridor Cities Transitway station
 - Existing hiker-biker trail



LEGEND

- Municipality
- Parkland
- Employment areas
- M Metro Station
- MARC MARC Station
- Corridor Cities Transitway station
- Existing hiker-biker trail
- Proposed hiker-biker trail corridor

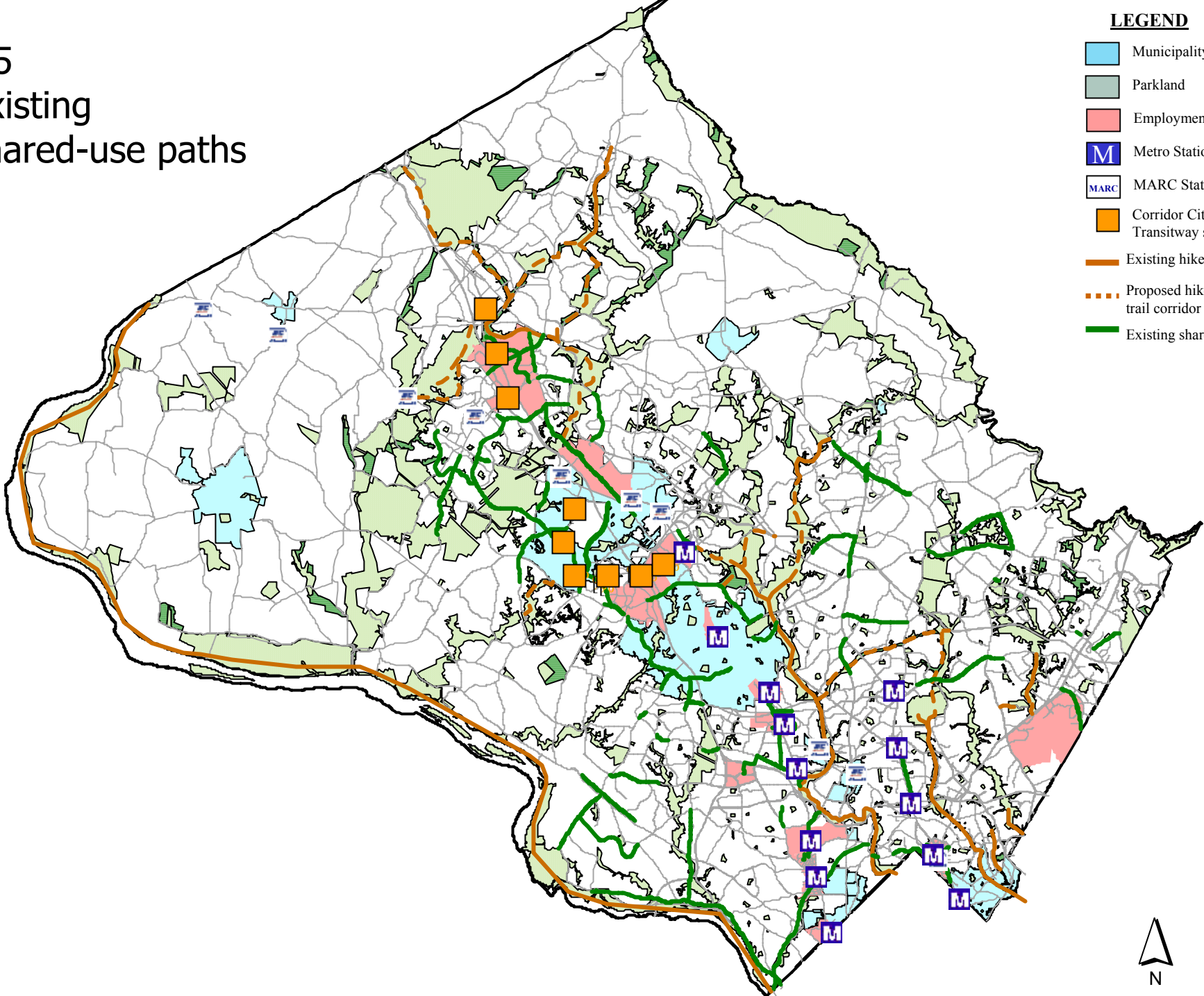
#4
Proposed
hiker-biker trail
corridors





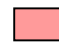







LEGEND

- Municipality
- Parkland
- Employment areas
- Metro Station
- MARC Station
- Corridor Cities Transitway station
- Existing hiker-biker trail
- Proposed hiker-biker trail corridor
- Existing shared use path

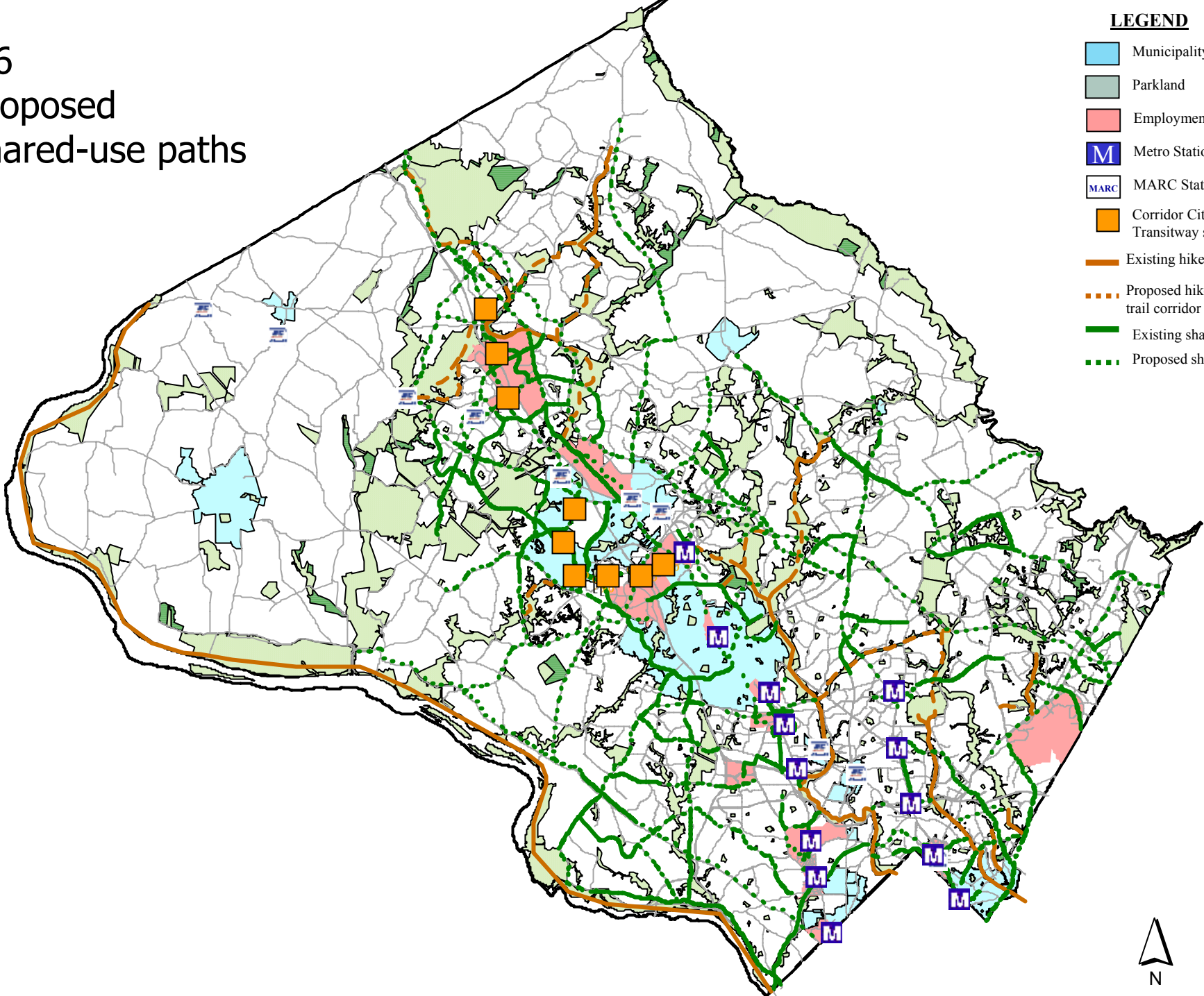
#5
Existing
shared-use paths



LEGEND

-  Municipality
-  Parkland
-  Employment areas
-  Metro Station
-  MARC Station
-  Corridor Cities
Transitway station
-  Existing hiker-biker trail
-  Proposed hiker-biker trail corridor
-  Existing shared use path
-  Proposed shared use path

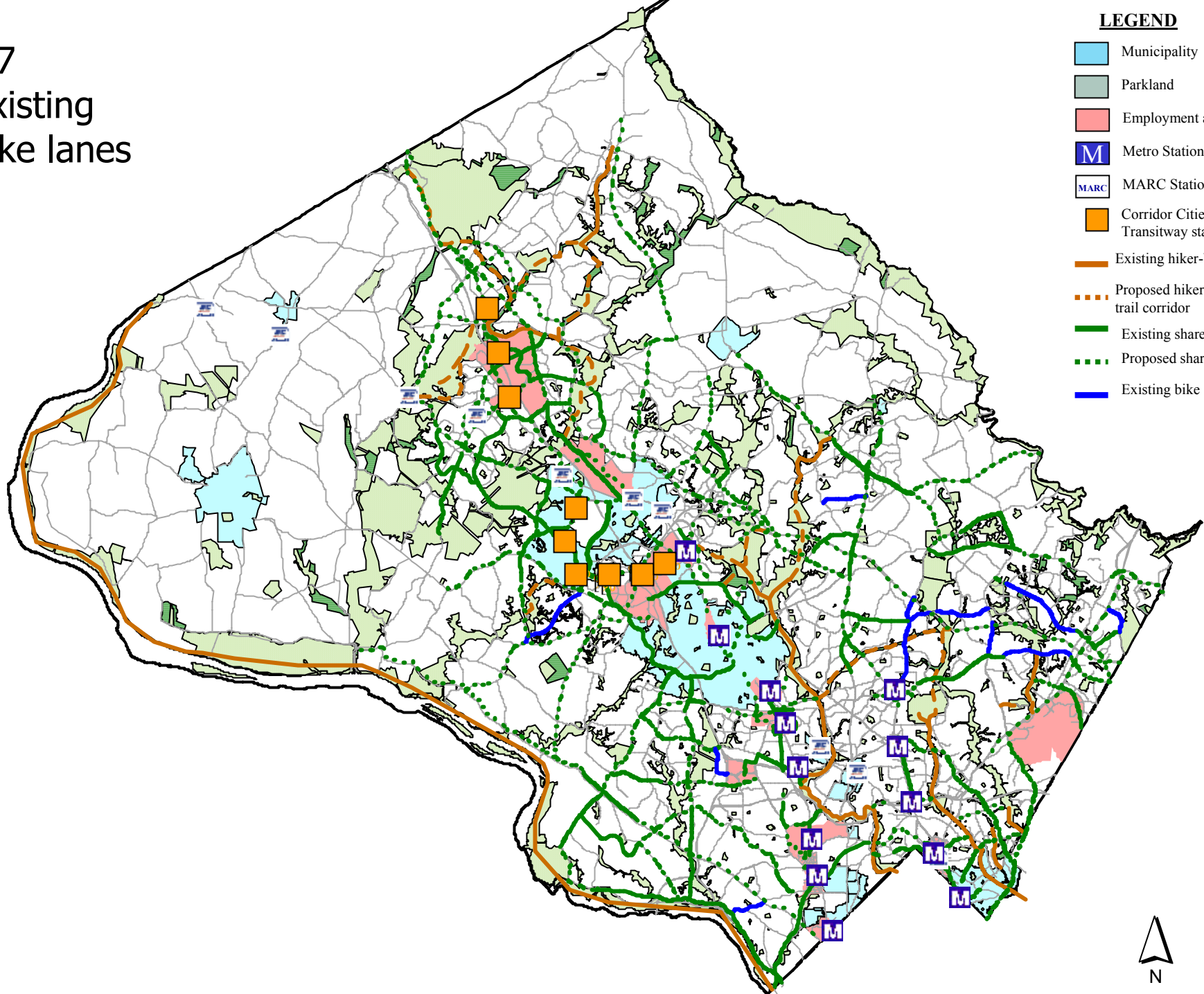
#6
Proposed
shared-use paths



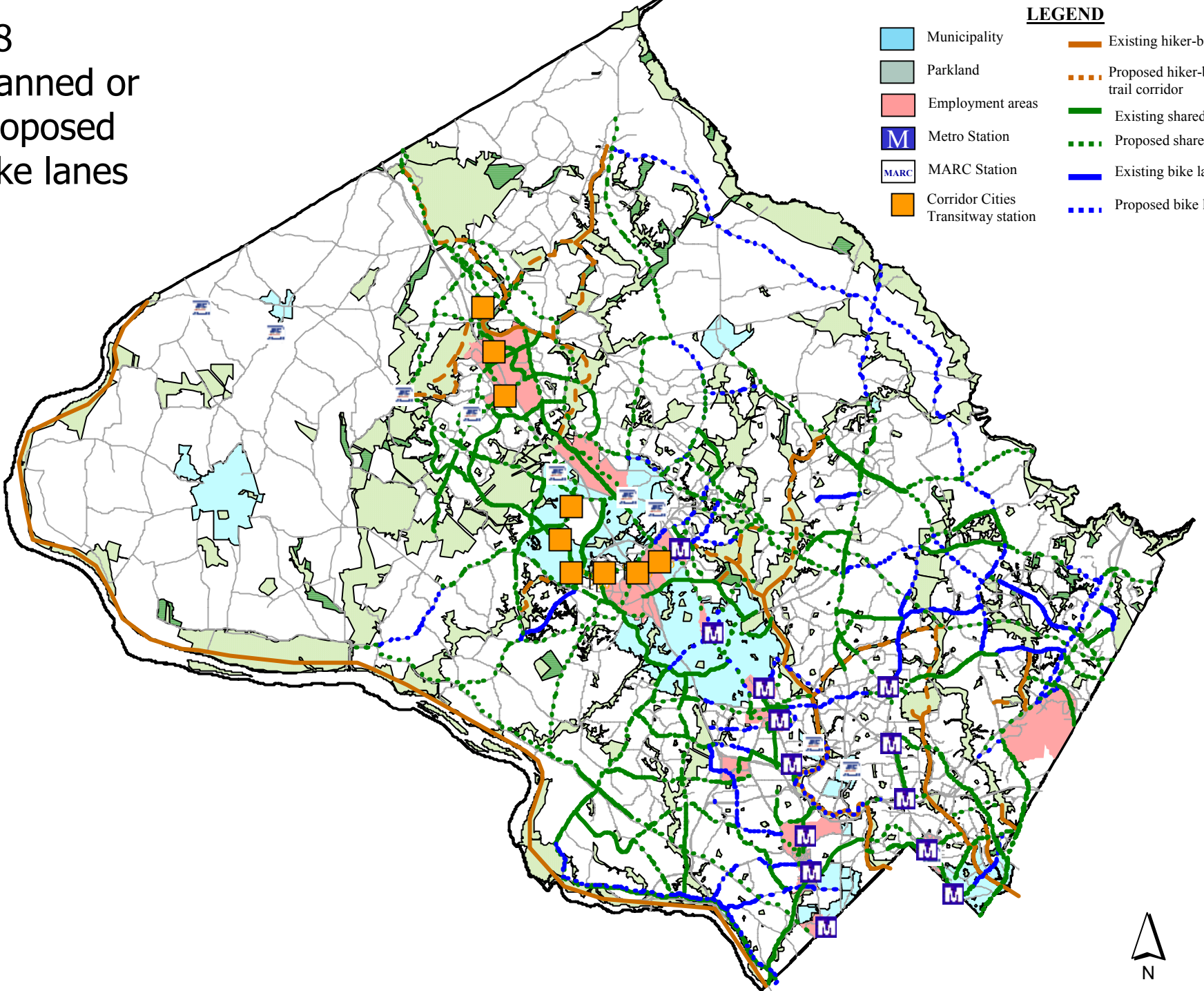
LEGEND

- Municipality
- Parkland
- Employment areas
- M Metro Station
- MARC MARC Station
- Corridor Cities Transitway station
- Existing hiker-biker trail
- Proposed hiker-biker trail corridor
- Existing shared use path
- Proposed shared use path
- Existing bike lanes

#7 Existing bike lanes



#8 Planned or proposed bike lanes



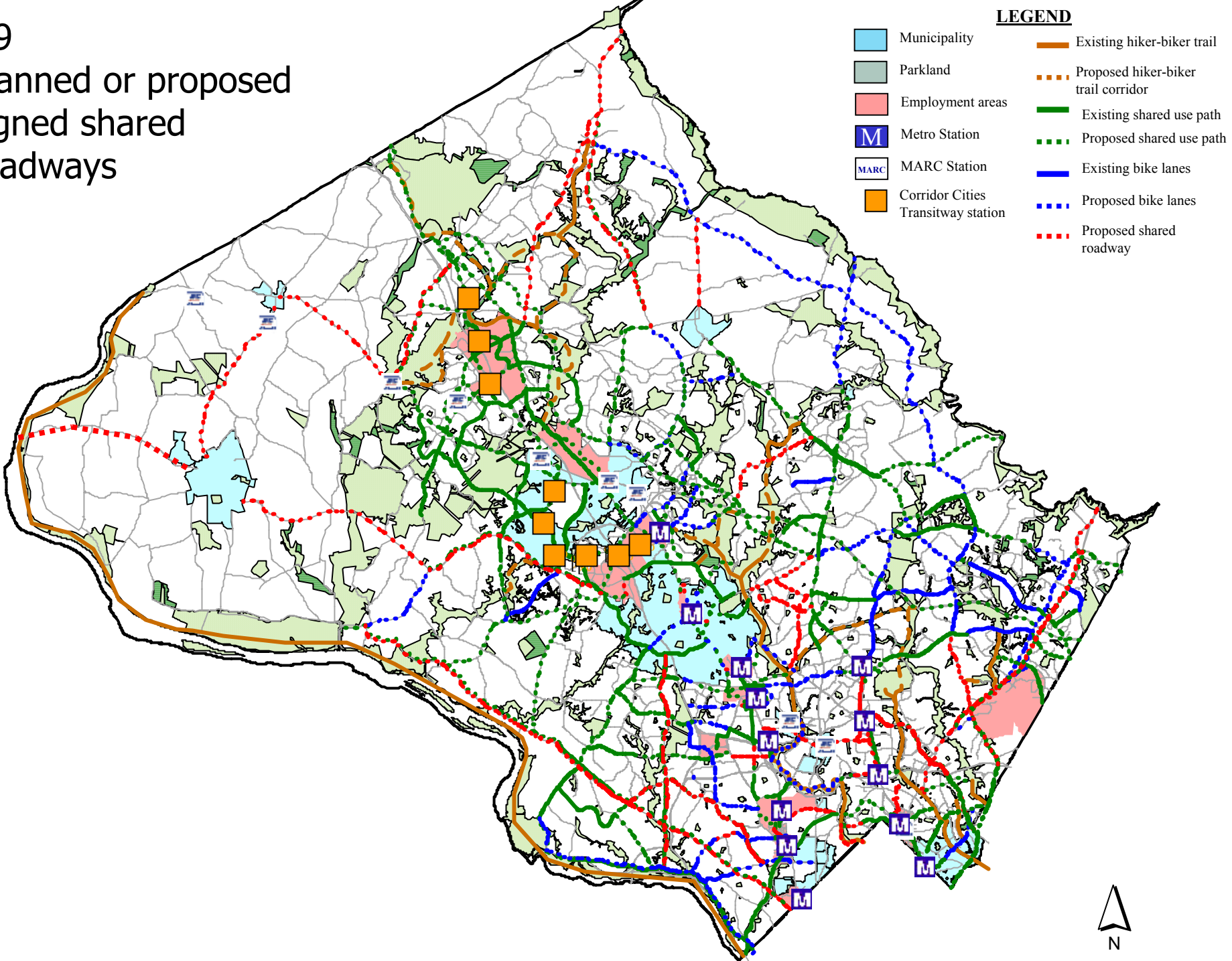
LEGEND

- Municipality
- Parkland
- Employment areas
- Metro Station
- MARC Station
- Corridor Cities Transitway station
- Existing hiker-biker trail
- Proposed hiker-biker trail corridor
- Existing shared use path
- Proposed shared use path
- Existing bike lanes
- Proposed bike lanes

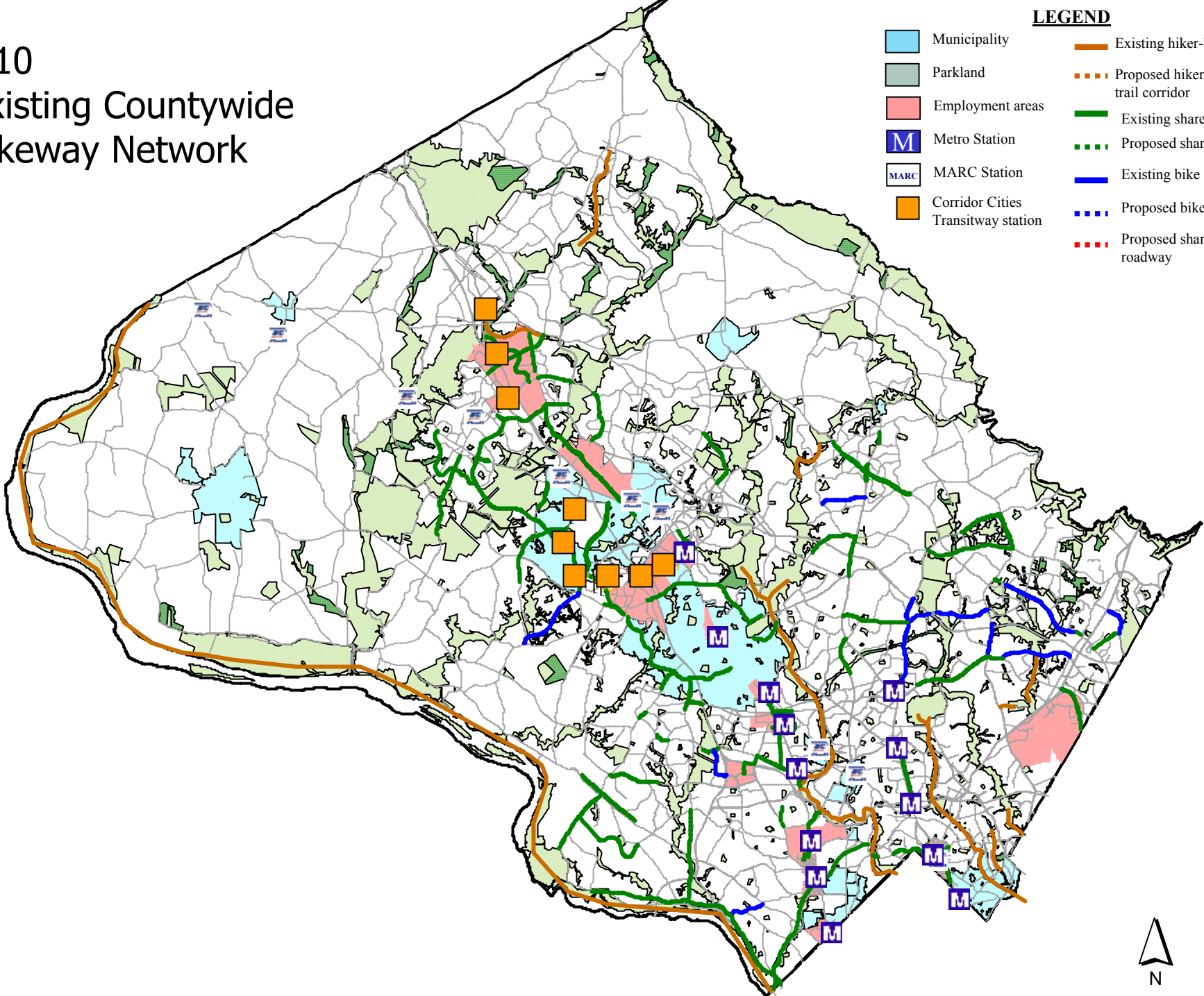


#9

Planned or proposed signed shared roadways



#10 Existing Countywide Bikeway Network

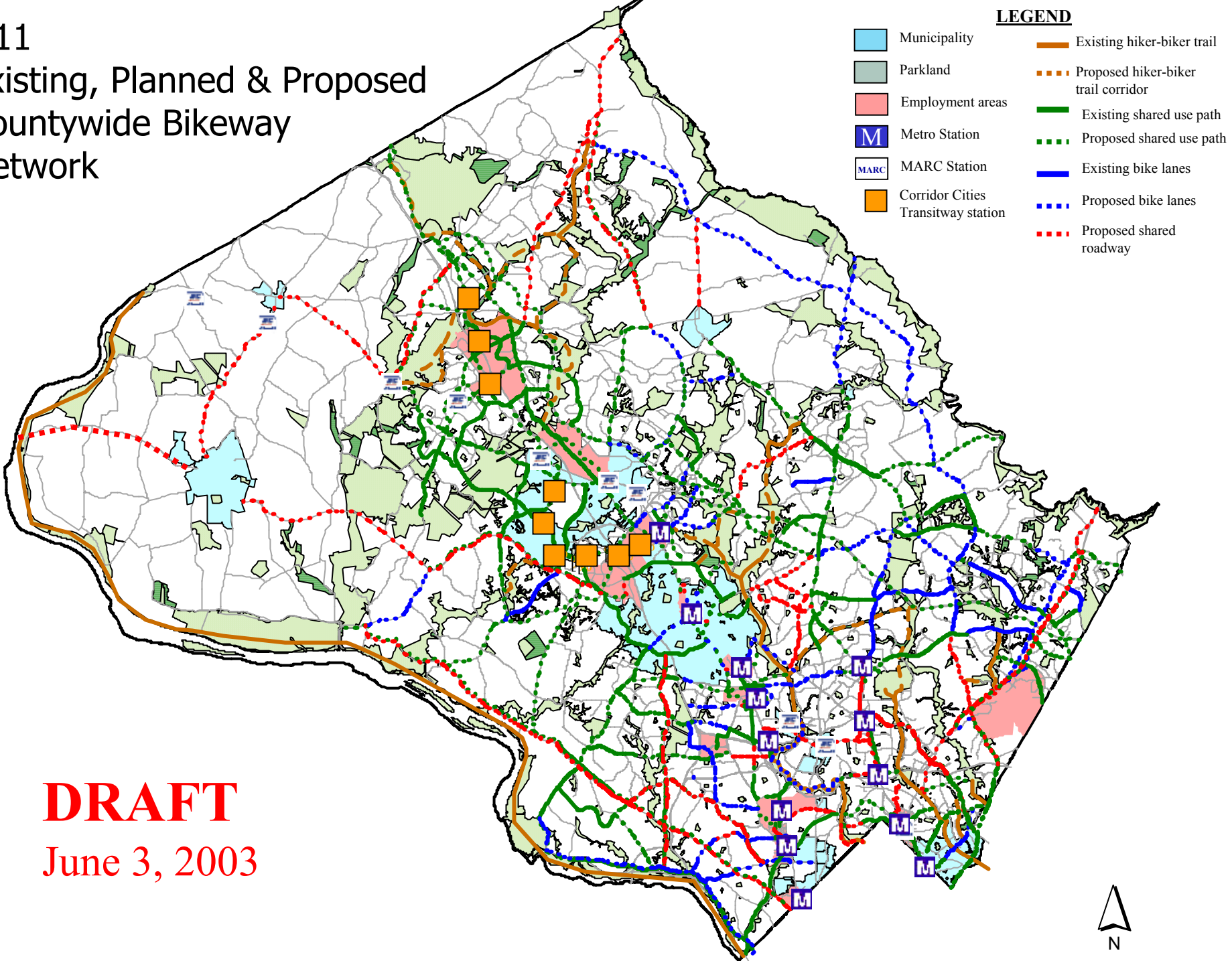


LEGEND

- Municipality
- Parkland
- Employment areas
- Metro Station
- MARC Station
- Corridor Cities Transitway station
- Existing hiker-biker trail
- Proposed hiker-biker trail corridor
- Existing shared use path
- Proposed shared use path
- Existing bike lanes
- Proposed bike lanes
- Proposed shared roadway



#11 Existing, Planned & Proposed Countywide Bikeway Network

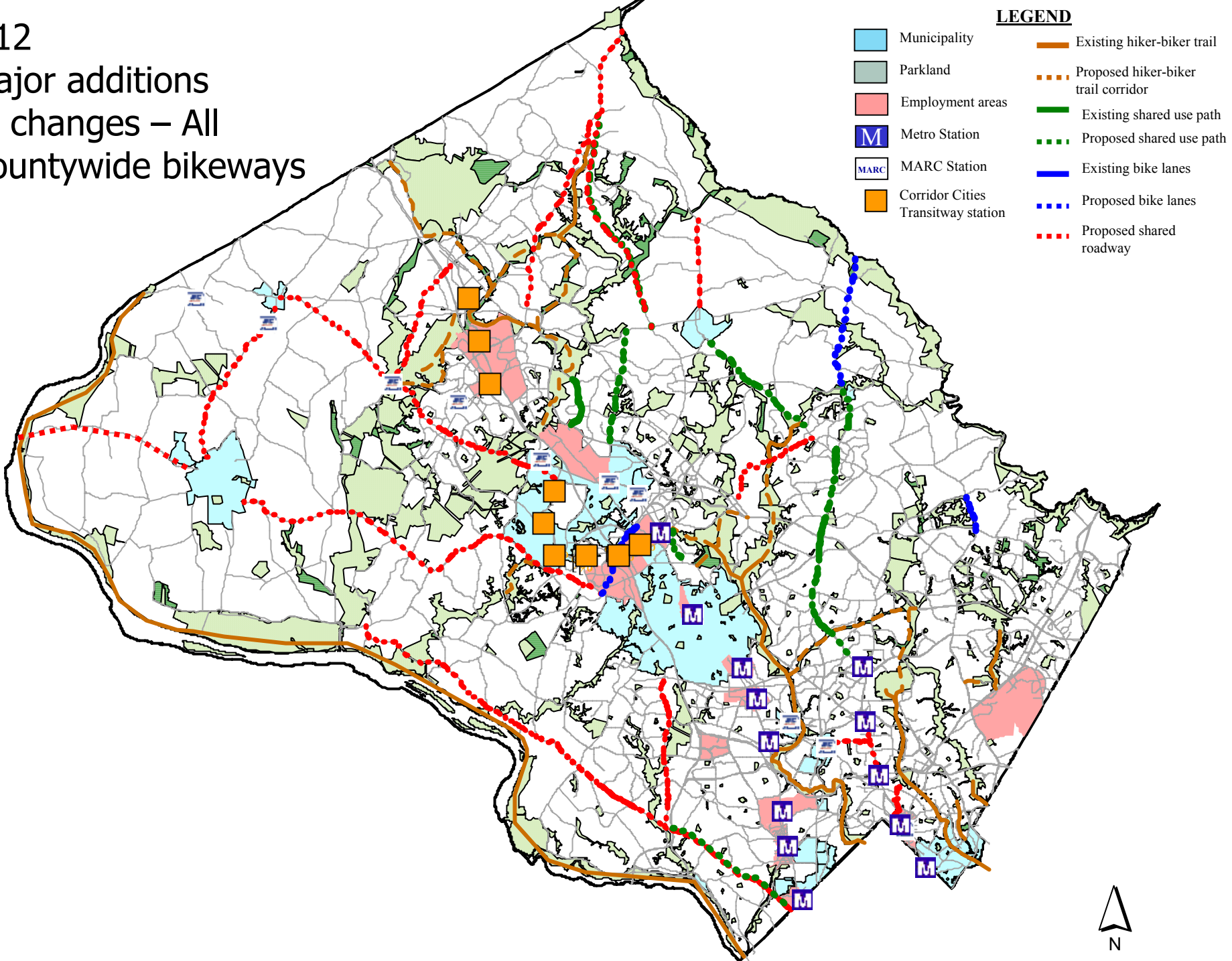


DRAFT
June 3, 2003



#12

Major additions or changes – All Countywide bikeways



Implementation



- Two tiers of prioritization
- Higher priority for projects that:
 - Provide direct connection to municipality, CBD, employment center or transit station
 - Can be implemented as part of road improvement project
 - Can be implemented by simply adding STR signs
 - Provide major connection between hard surface park trails and rail-trails or other CWBs
 - Connect two existing or programmed CWBs
 - Fill in gaps in CWBN (shared use paths)

Recommendations



- Increase funding for DPWT's Annual Bikeways Program
- Consider developing and annually funding programs for:
 - bikeway maintenance
 - bicycle parking
 - bicycle education and promotion
- Consider creating a new position in DPWT to assist with bikeway implementation
- Consider creating a new bicycle education/outreach coordinator position in the Office of the County Executive

Master Plan of Countywide Bikeways

Tentative Schedule

- **June 2003** – Public Workshops
- **October 2003** – Staff Draft Complete, Transmit to Planning Board
- **November 2003** – Planning Board Public Hearing and Worksessions
- **Early 2004** – Transmit Planning Board Draft to County Council
- **Late Spring 2004** – County Council Public Hearing and Worksessions
- **Summer/Fall 2004** – Approved and Adopted by County Council and Planning Commission

Master Plan of Countywide Bikeways



Contact Information

Chuck Kines, Bikeways Planner
Countywide Planning Division
M-NCPPC, Montgomery County Department of
Park and Planning

301-495-2184

Charles.Kines@mncppc-mc.org

www.mcparkandplanning.org