

# TRANSIT-ORIENTED COMMUNITIES

---

## HIGH-CAPACITY TRANSIT STATION AREA INTERACTIVE MAP

Timothy Canan, AICP  
TPB Planning Data and Research Program Director

Transportation Planning Board  
October 21, 2020

# Transit-Oriented Communities

---

- COG Board Chairman, Derrick Davis, identified Transit-Oriented Communities (TOCs) as a focus of the Board of Directors during 2020
- TPB Chair, Kelly Russell, identified transportation elements of TOCs as a focus of the TPB work activities during 2020
- COG and TPB staff identified a series of TOC-supportive work activities and products that can be undertaken by COG and TPB staff to help member jurisdictions' efforts to enhance housing and transportation connectivity in areas served by transit
  - Help reach regional housing targets
  - Support development of TOCs
  - Advance Aspirational Initiatives of *Visualize 2045*



# Optimize and Balance Land Use initiative

---

- More housing in the region
  - Identify ways to develop more housing in the region to provide workers to meet forecast regional job growth
- Optimize and coordinate transit investments and land use
  - Identify ways to increase jobs and housing around underutilized transit stations and Activity Centers with high-capacity transit
- Balance future growth in jobs and housing regionwide
  - Achieve a better-balanced distribution of future growth in jobs and housing between the eastern and western portions of the region



# Activity Centers and High-Capacity Transit

---

**Activity Centers** - locations that will accommodate the majority of the region's future growth in the coming decades. They include existing urban centers, priority growth areas, traditional towns, and transit hubs.

- First Activity Centers Map approved in 2002
- Updates in 2007 and 2012'

**High-Capacity Transit** – defined in *Visualize 2045* as Metrorail, Commuter Rail, Light Rail, Bus Rapid Transit (BRT), and Streetcar.



# Why?

---

- By 2045, the number of jobs are forecasts to increase faster than the number households
  - This will result in more commute trips originating from outside the region; increasing demand on congested roadways and make achieving region's livability, sustainability, accessibility and prosperity goals.
- The Regional Housing Targets advance the *Visualize 2045* Aspirational Initiative, “Bring Jobs and Housing Closer Together”
  - Seek to address these challenges by optimizing the region's complex land use and transportation system to favorably address traffic congestion and support increased accessibility



# Regional Housing Targets

---

- Adopted by the COG Board of Directors in September 2019:
  - **Amount** – At least 320,000 new housing units needed between 2020 and 2030 to accommodate employment forecasts (75,000 more than in current forecasts)
  - **Location** – 75% should be in Activity Centers or near High-Capacity Transit
  - **Affordability** – 75% should be affordable to low- and middle-income households
- Developed in conjunction with COG’S Housing Strategy Group, the Planning Directors Technical Advisory Committee (PDTAC), and the Housing Directors Advisory Committee (HDAC)



# TOC Activities

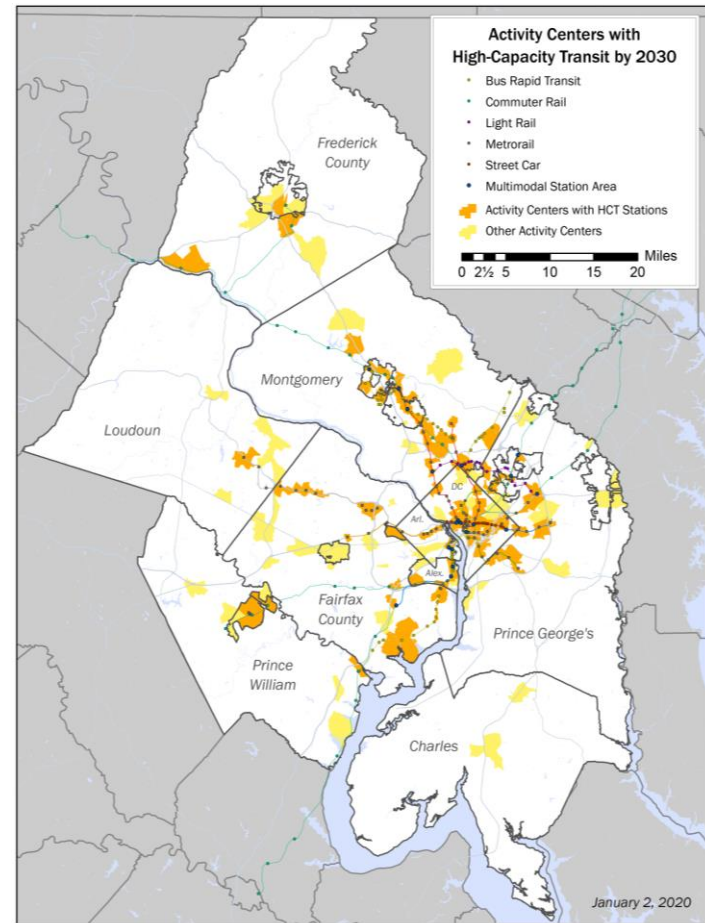
---

1. **Identify and Classify High Capacity Transit (HCT) Station Areas**
2. **Summarize Population, Households, and Employment in HCT Station Areas**
3. Examine Transportation Connectivity in HCT Station Areas – Alternative Modes
  - a. **Walkshed analysis**
  - b. “Micromobility” shed analysis
  - c. “Micro-transit” shed analysis



# 1. Identify and Classify High Capacity Transit (HCT) Station Areas

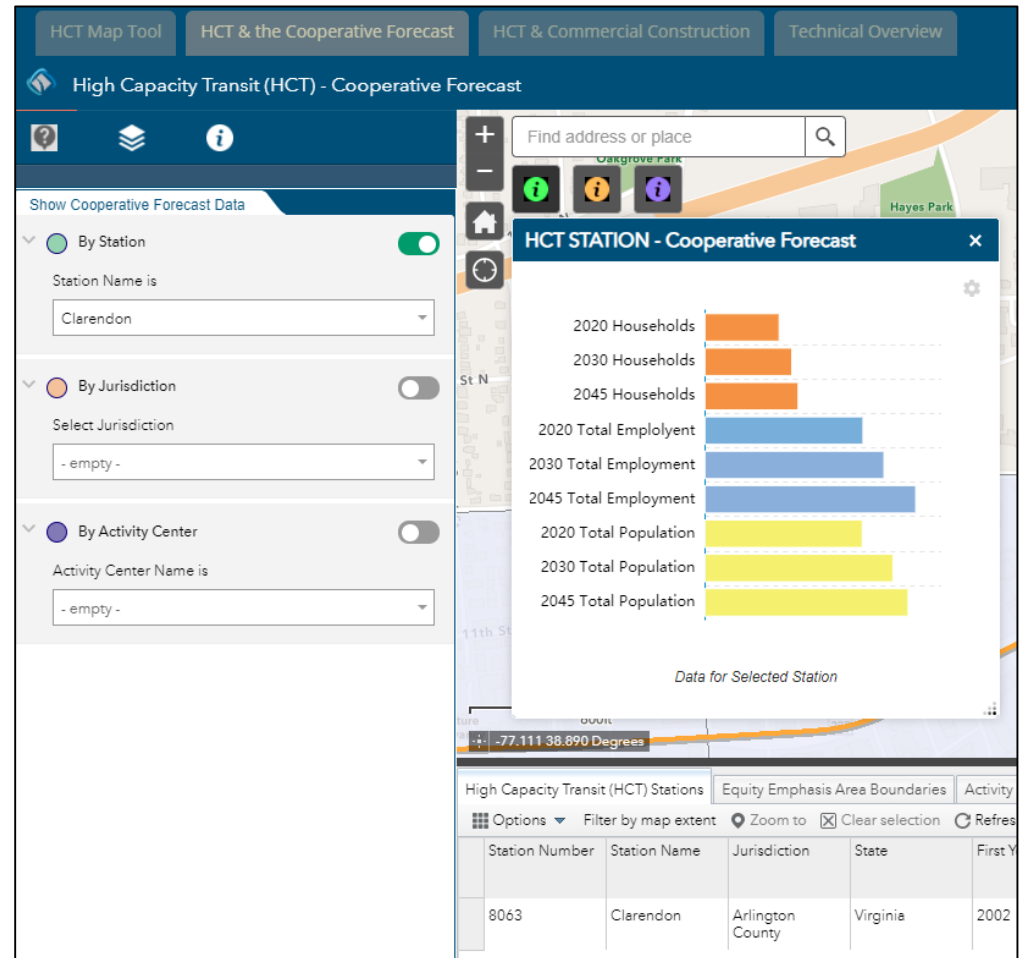
- GIS-based interactive web map that identifies the **HCT Station Areas anticipated in the region by 2030**
- Build understanding of HCT Station Areas and their locations in the region
- Focus discussion and efforts to examine projects, programs, and policies that promote development of successful TOCs
- Expandable to include additional TOC activities





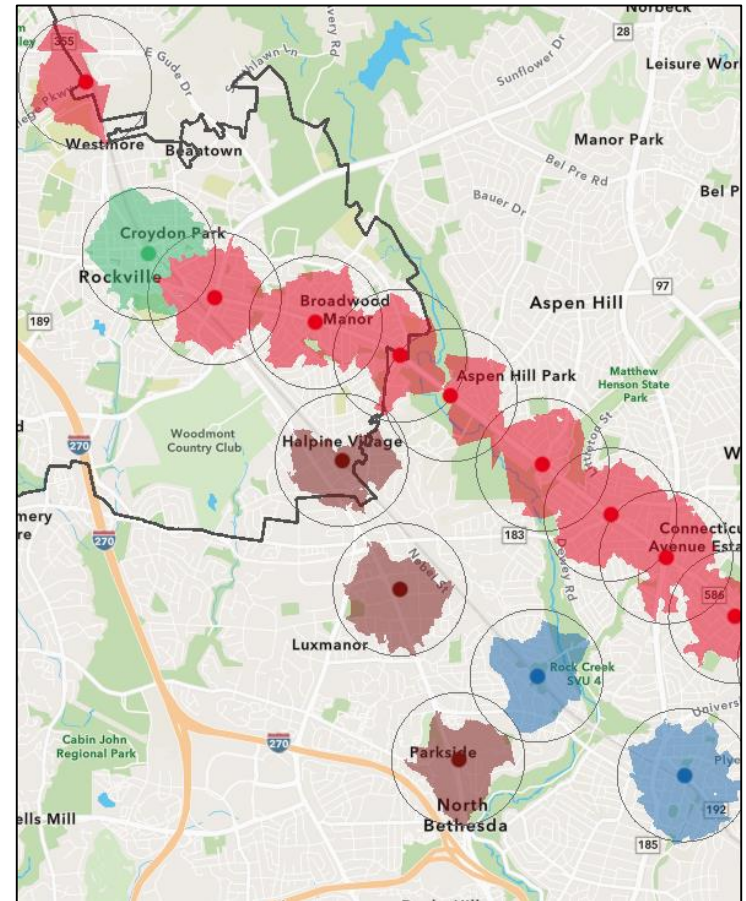
# 2. Summarize Population, Households, and Employment in HCT Station Areas

- Round 9.1a Cooperative Forecast summaries are available for each HCT Station Area
- Includes Population, Households, and Employment
- Available for 2020, 2030, and 2045



# 3a. Alternative Modes – Walkshed Analysis

- Walksheds are the distance a person is willing to walk to reach transit
- Generally accepted to be ½ mile, or a 10-minute walk
- “Theoretical” walkshed is a circle with a ½-mile radius from the transit station
- Physical barriers and constraints, however, result a smaller area
- The Transit Access Focus Areas (TAFA) developed in the Transit Within Reach project identified ½-mile walksheds using available network information



# Who can use it?

---

- Elected officials and policy makers
- Local land use and transportation planners
- State DOT and regional transit planners
- Interested members of the public



# How do I access the web map?

<https://www.mwcog.org/maps/map-listing/hct-map-tool/>

The screenshot shows the 'High Capacity Transit (HCT) Map Tool' interface. On the left, there are several filter panels:

- Identify Stations:** A list of filters with toggle switches, including 'IN An Activity Center', 'NOT in an Activity Center', 'IN an Equity Emphasis Area (EEA)', 'NOT IN An Equity Emphasis Area (EEA)', 'IN a Core Jurisdiction', 'IN an Inner Suburban Jurisdiction', and 'IN an Outer Suburban Jurisdiction'.
- Select Jurisdiction (optional):** A dropdown menu currently set to '- empty -'.
- Show Stations by Mode (optional):** A list of radio buttons for 'Metro', 'Commuter Rail', 'Street Car / Bus Rapid Transit', and 'Light Rail'.

The main map area shows a geographic view of the Washington D.C. region with various colored dots representing transit stations. A search bar at the top left of the map area contains the text 'Find address or place'.

At the bottom of the interface, there is a table titled 'High Capacity Transit (HCT) Stations' with the following data:

ID	Station Number	Station Name	First Year	Mode Type (Detailed)	Jurisdiction	State	In an Activity Center
1	8040	Anacostia	2002	Metro	District of Columbia	District of Columbia	1
2	8036	Archives-Navy Memorial-Penn Quarter	2002	Metro	District of Columbia	District of Columbia	1
3	10811	Bennina & 42nd NE	2023	Street Car / Bus Rapid	District of Columbia	District of Columbia	1



## Timothy Canan, AICP

TPB Planning Data and Research Program Director

(202) 962-3280

[tcanan@mwkog.org](mailto:tcanan@mwkog.org)

[mwkog.org/tpb](http://mwkog.org/tpb)

---

Metropolitan Washington Council of Governments

777 North Capitol Street NE, Suite 300

Washington, DC 20002



National Capital Region  
**Transportation Planning Board**