

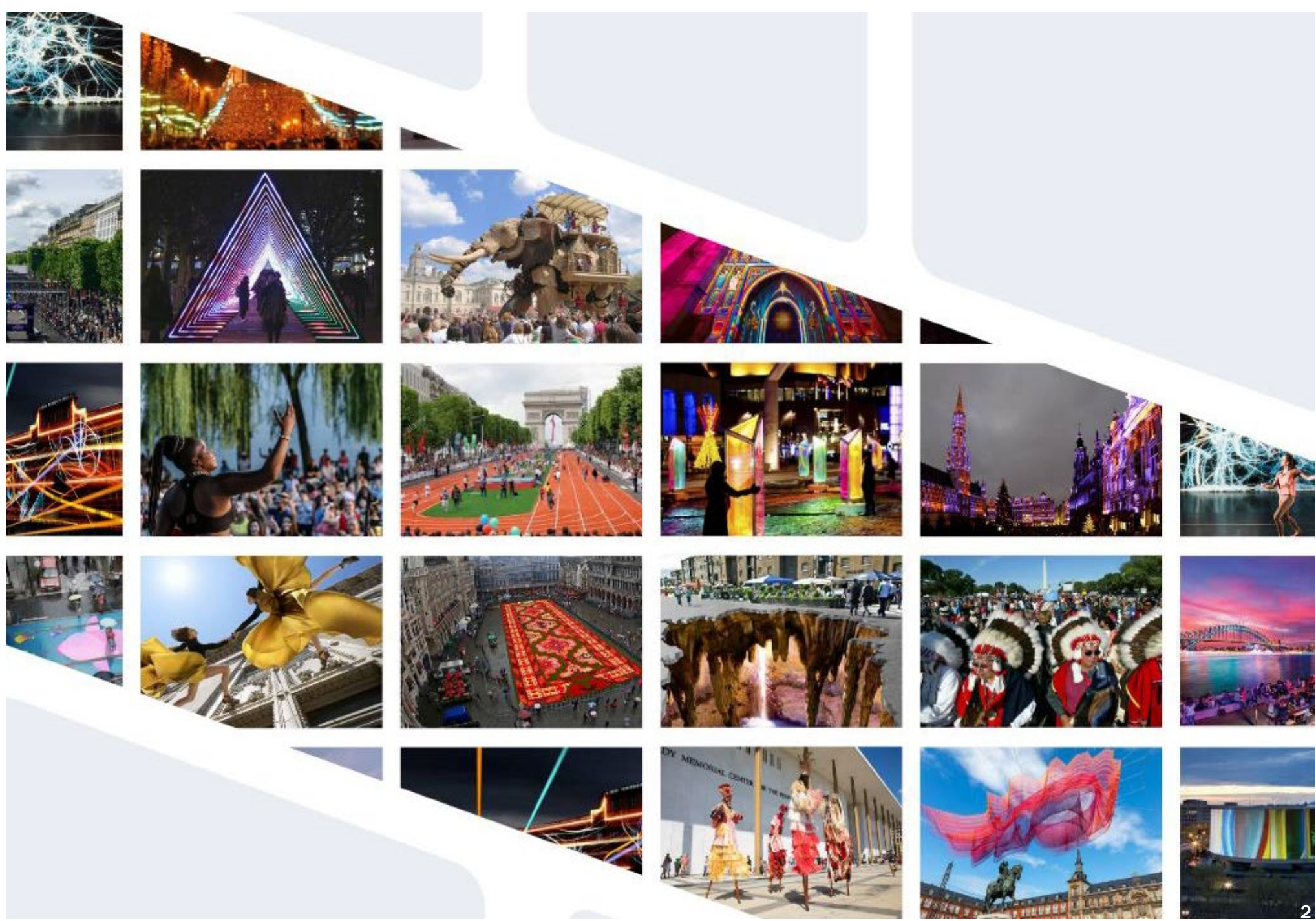


The **PENNSYLVANIA**
AVENUE
INITIATIVE

Metropolitan Washington Council of Governments
Transportation Planning Board
December 21, 2022

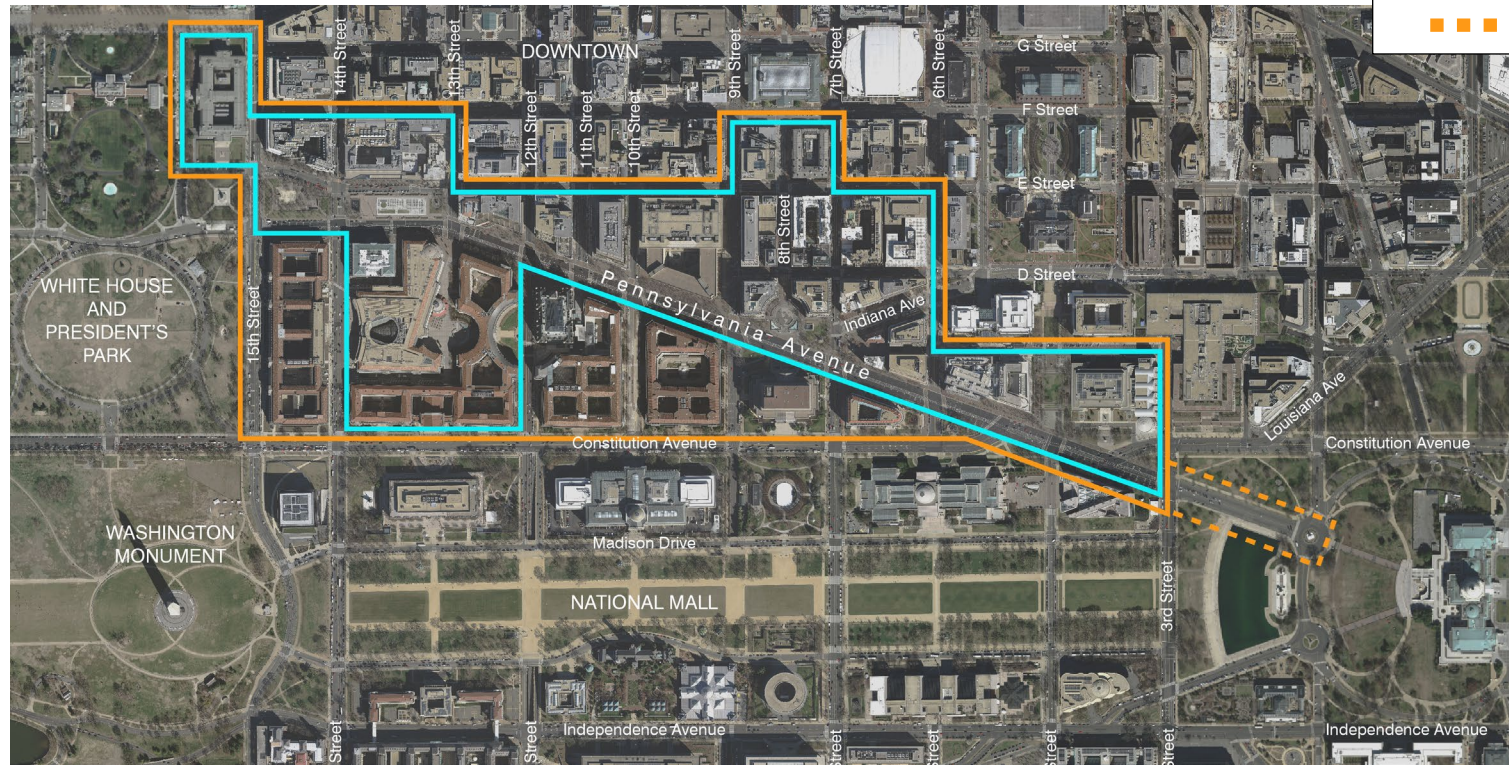
Pennsylvania Avenue Vision and Concepts

- Background
- The Vision:
*The Avenue
as a Venue*
- Conceptual
Approaches
- Next Steps



Background

The Initiative



	PADC Boundary
	Study Area Boundary
	Extended Area of Interest

- The Avenue spans 1.2 miles between the White house and U.S. Capitol
- The Study Area covers 12 city blocks including 40 acres of open space
- The land use mix is predominantly federal offices and private commercial but includes about 1,500 residents
- It is in proximity to cultural institutions and the National Mall
- It is accessible to several public transit options

Study Area Map

Executive Committee

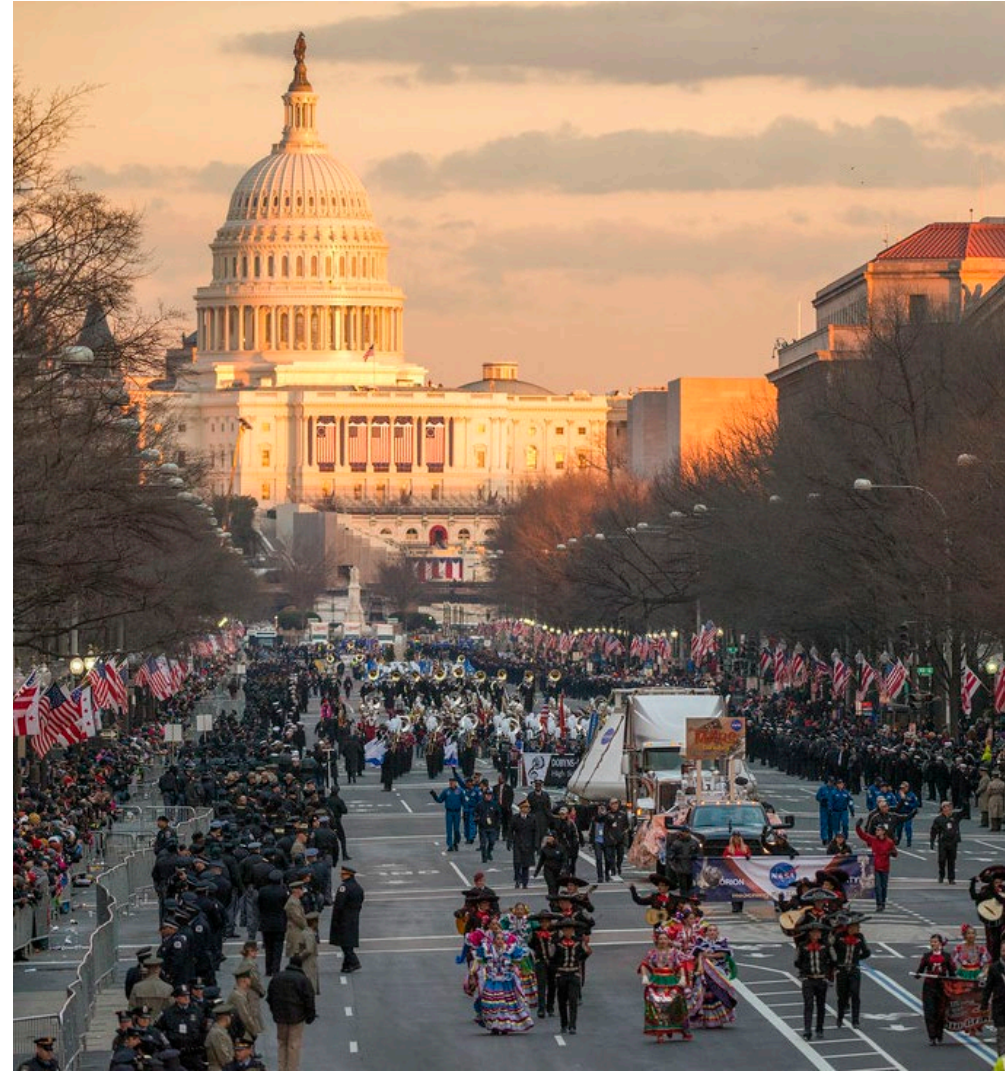
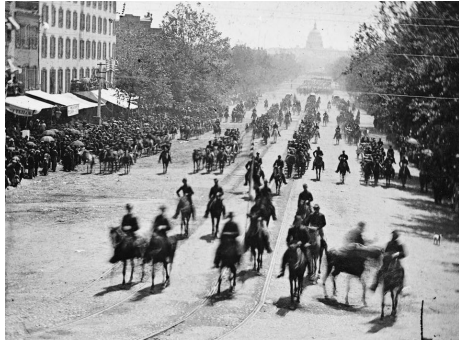


Collaborating Stakeholders

- Events DC
- Downtown DC BID

Background

A History of Ceremony



The Avenue is the nation's preeminent ceremonial boulevard

Background

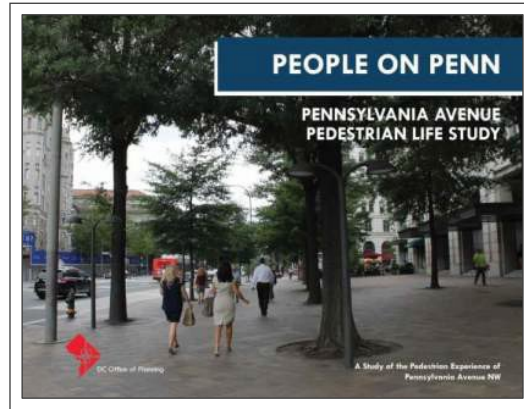
The Avenue Today



The Avenue terminates at the White House and U.S. Capitol Grounds

Background

Technical Study
Key Findings



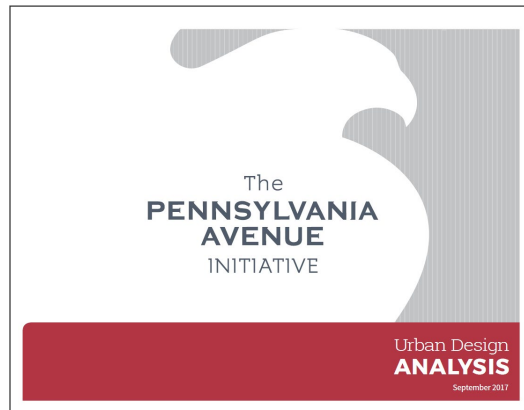
2015 Pedestrian Life Study



2016 Economic and Real Estate Market Analysis



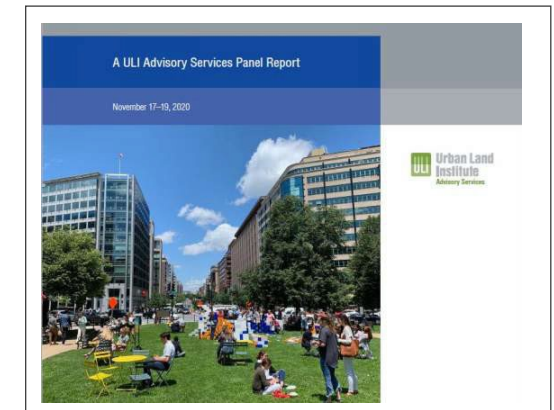
2016 Cultural Landscape Report



2017 Urban Design Analysis



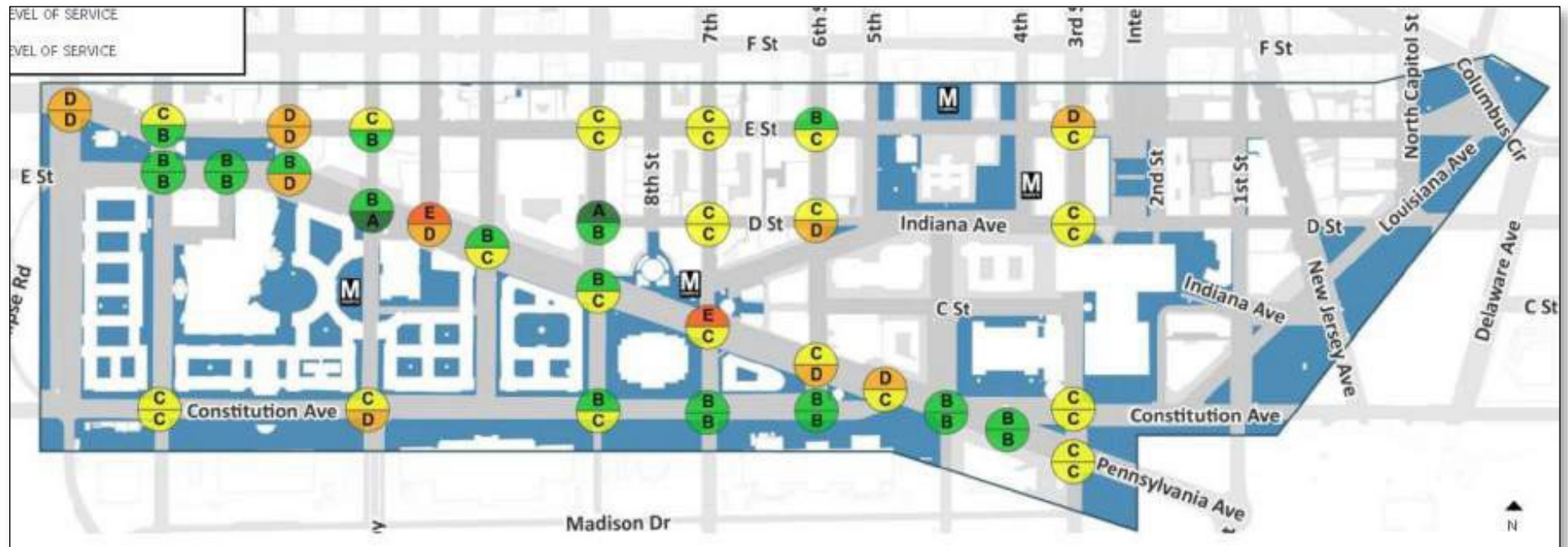
2018 Transportation Study



2020 Urban Land Institute Advisory Services Panel Report

Background

Pedestrian and Vehicular Circulation



Existing Vehicular Level of Service

The Vision

The Avenue
as a Venue



The Avenue as a *Venue*

- An Inclusive Venue and Economic Generator for the city,
- An Iconic, Inviting and Resilient Public Space for the nation.
- Create an *awe-inspiring public realm*.
- *Modernize the Infrastructure* for 21st Century needs.



The Vision



A Street for People

Prioritize space among pedestrians, bikes, transit and cars by:

- *Right-sizing the street and reallocating space*
- *Realigning the roadway*
- *Reconfiguring public space*

The Avenue as a *Venue*

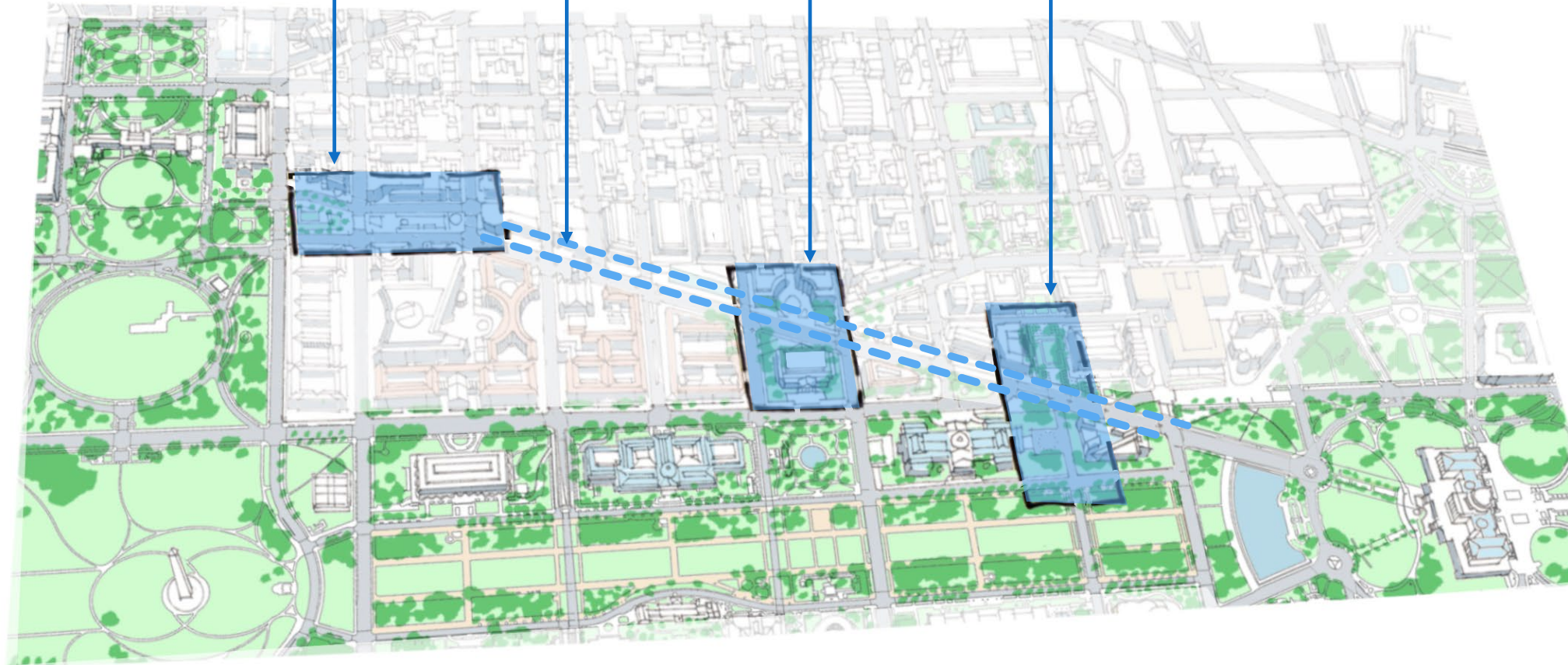
The Urban Rooms

The Western End:
Freedom Plaza and
Pershing Park

The Avenue:
The corridor links the
urban rooms as one
cohesive public space

Market Square:
U.S. Navy Memorial
and National Archives

The Eastern End:
Constitution Avenue,
4th Street, and
John Marshall Park



The Avenue *as a Venue*

Three Conceptual
Approaches

Urban Capital Street

A complete street with comfort amenities and service that create a go-to place and respite for locals and tourists.



Linear Green

Prioritizes transit, people, and bikes, creating a unique destination for outdoor gatherings and connection to nature.

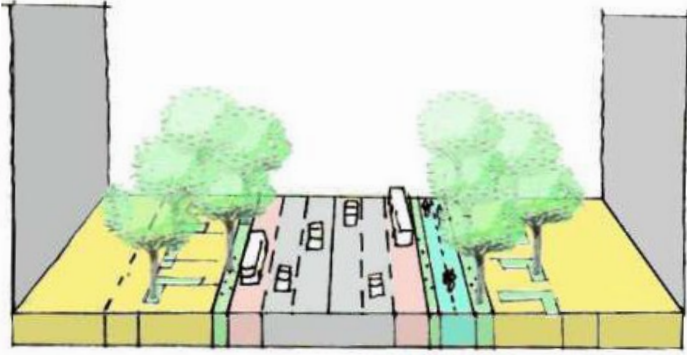


Civic Stage

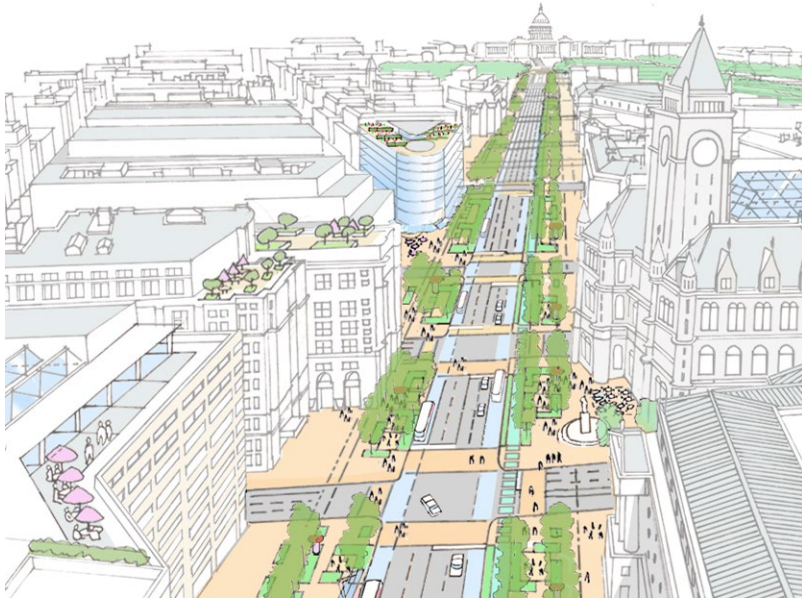
Centers pedestrians within a large median promenade with flexible public spaces that create iconic venues for a range of national and international events.



Urban Capital

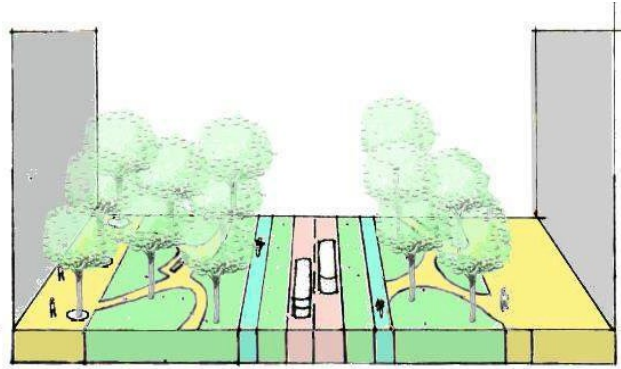


Expanded sidewalks provide room for unique and varied pedestrian “pockets” and places for activity and mobile commerce.



A Complete Street

Linear Green

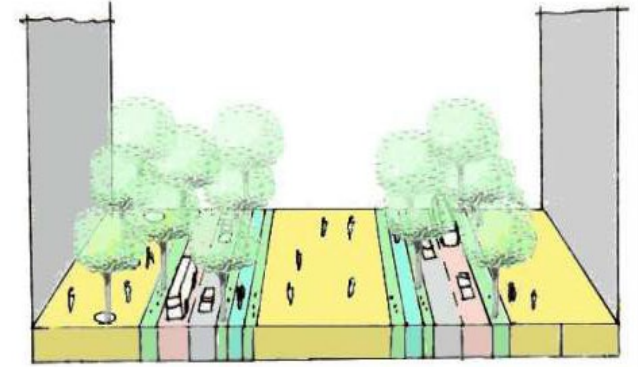


Pedestrian paths weave through the linear park landscape, creating informal areas for seating and recreation.

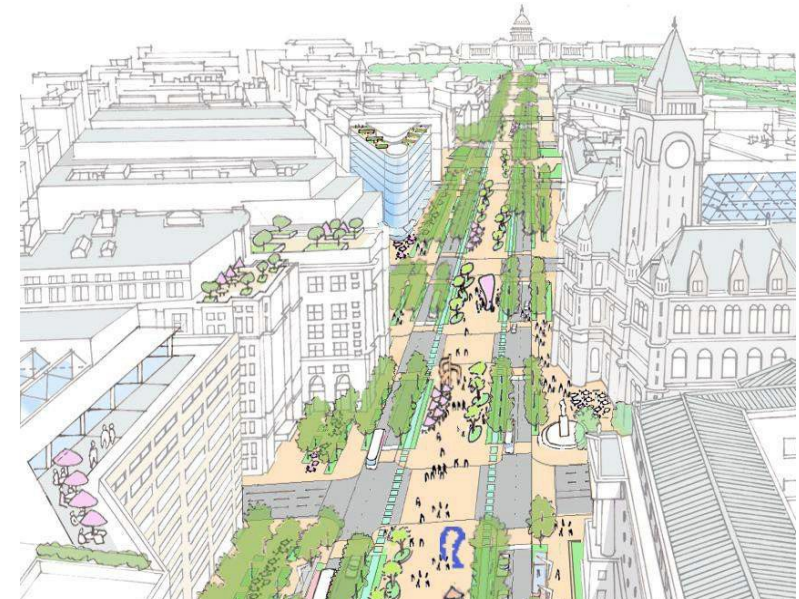


A Transit-Only Urban Park

Civic Stage



A grand promenade provides pedestrian space with Capitol views extending the length of the Avenue.

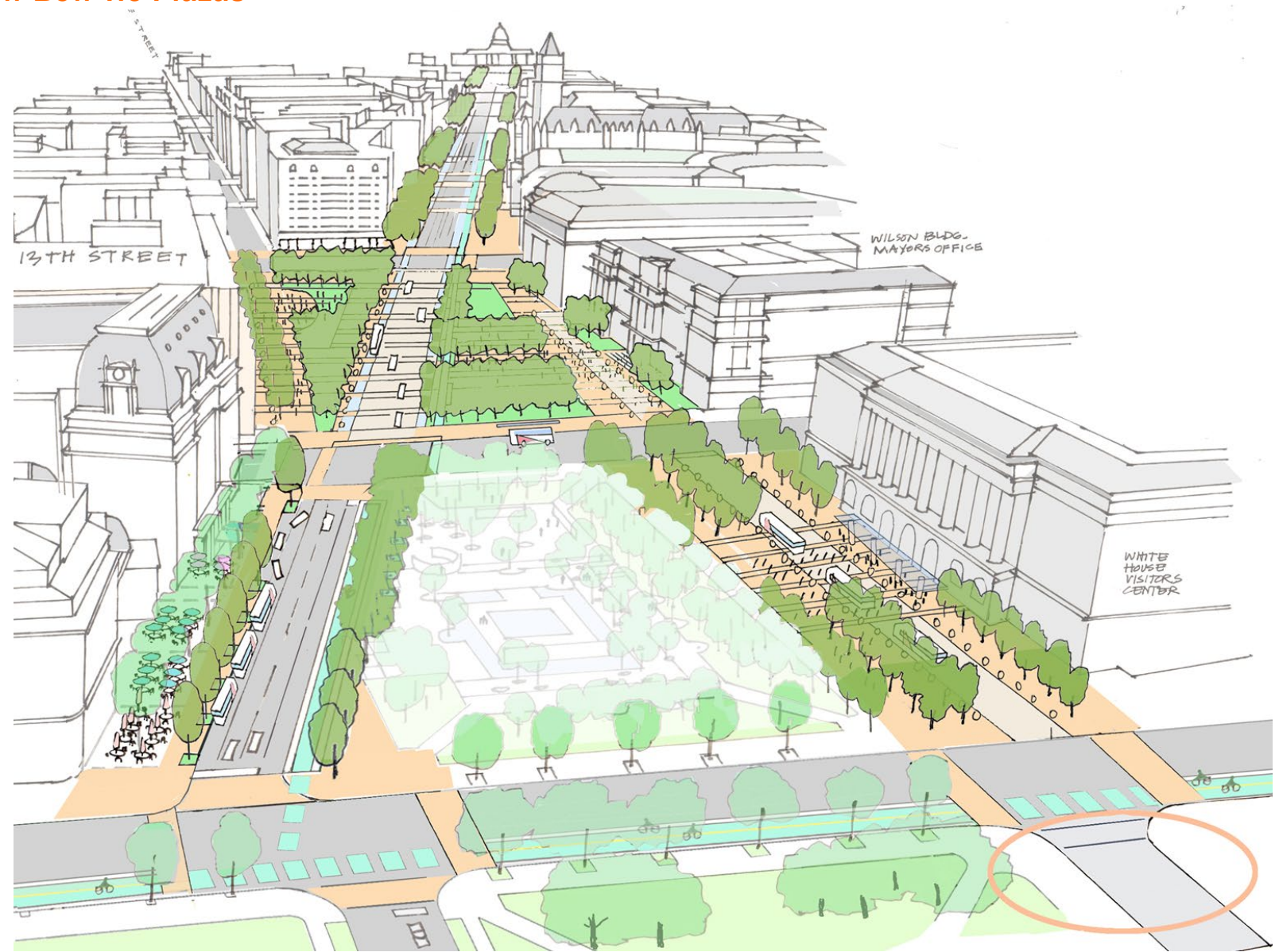


A Central Promenade



The Avenue as *a Venue*: The Western End

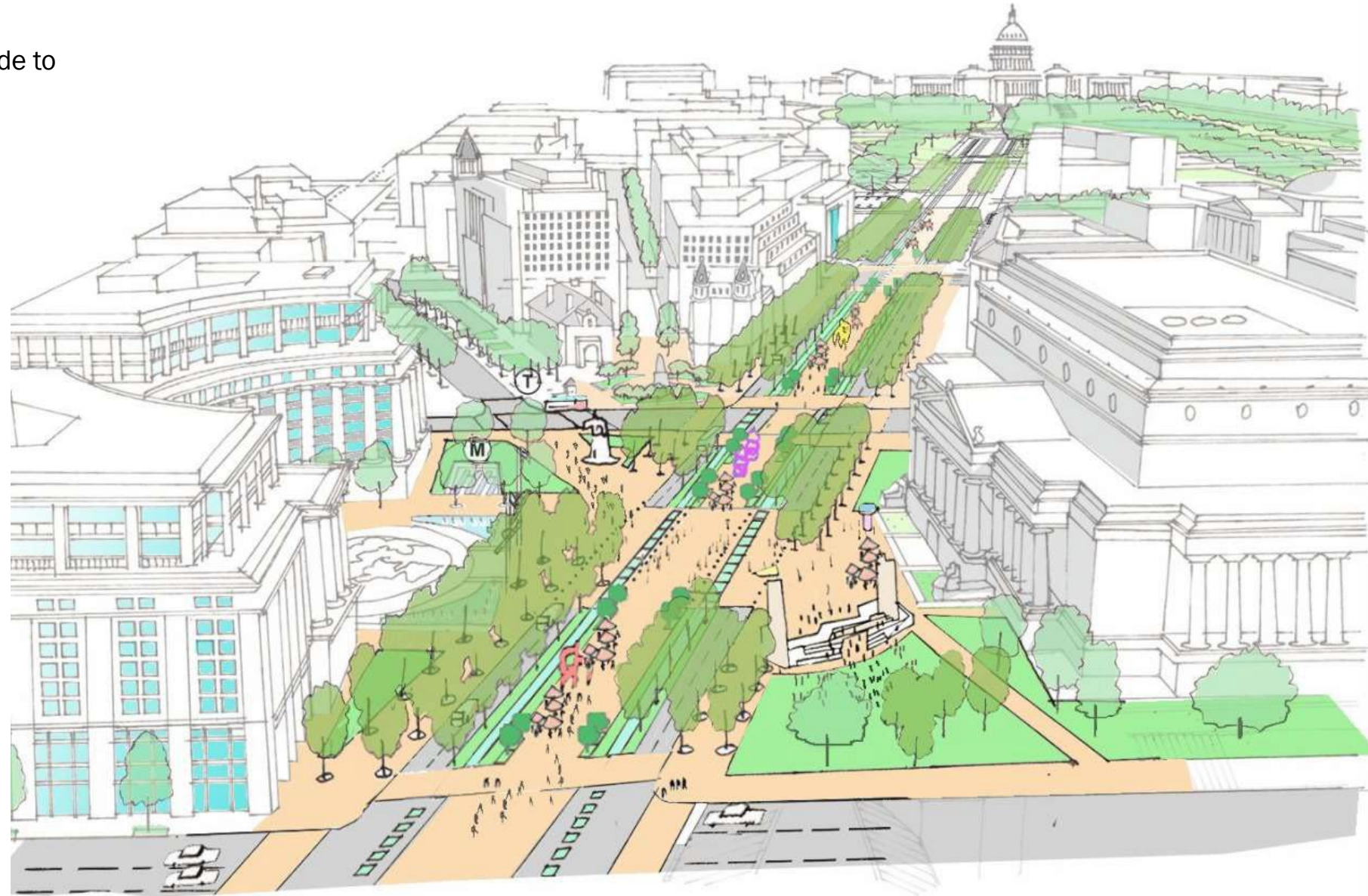
Restores historic alignment with a curbsless street with bow-tie open spaces (a new City Hall Plaza and National Theater Park) that together can easily expand for events.





The Avenue as *a Venue*: Market Square

A new generous mid-block pedestrian crossing joins with the center promenade to create a new central square.



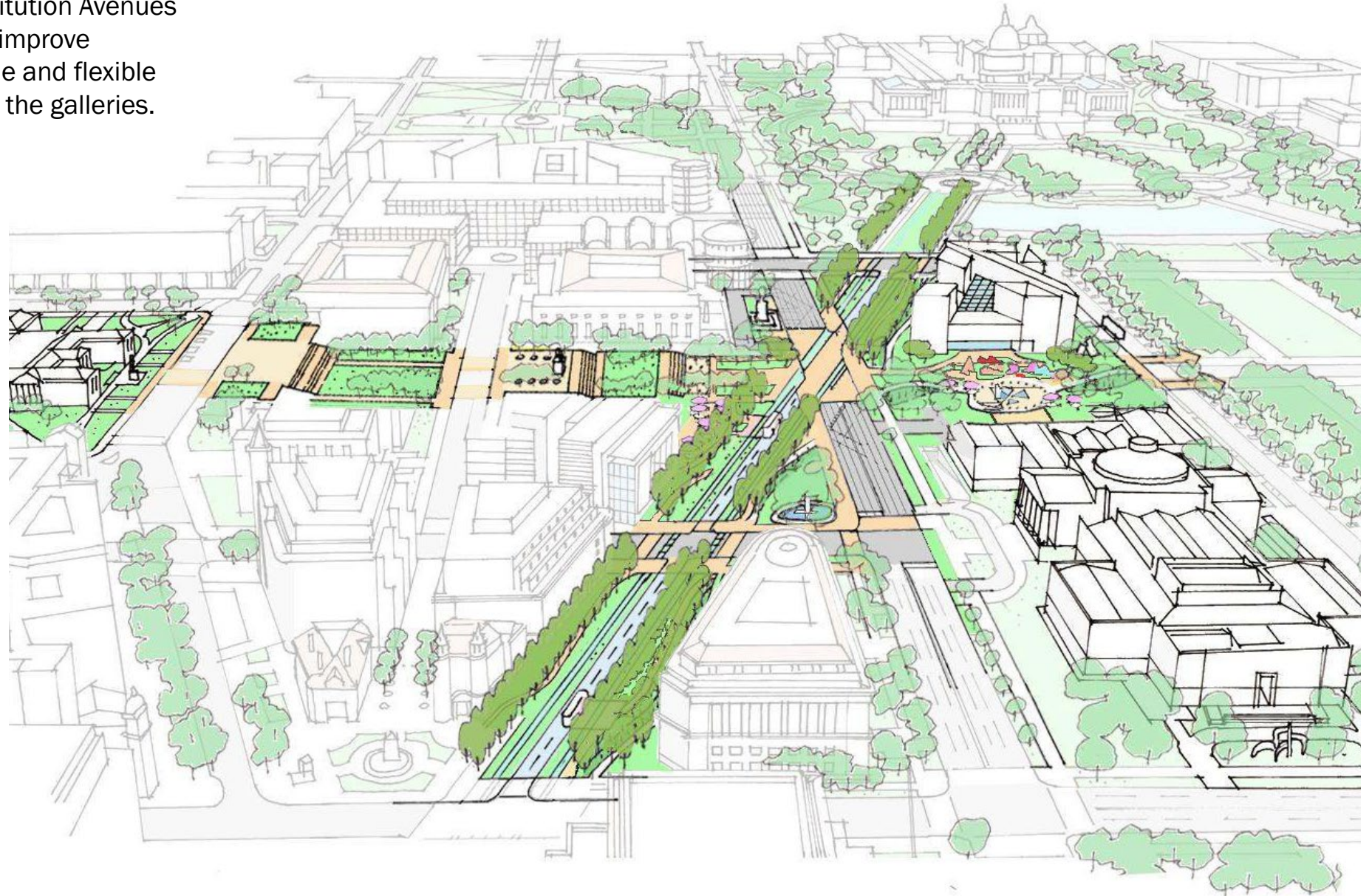


The Avenue as *a Venue*: The Eastern End

Linear Green

Connect to the National Mall

Realigns Pennsylvania and Constitution Avenues and permanently closes 4th St. to improve connections; create a more usable and flexible space; and active space between the galleries.

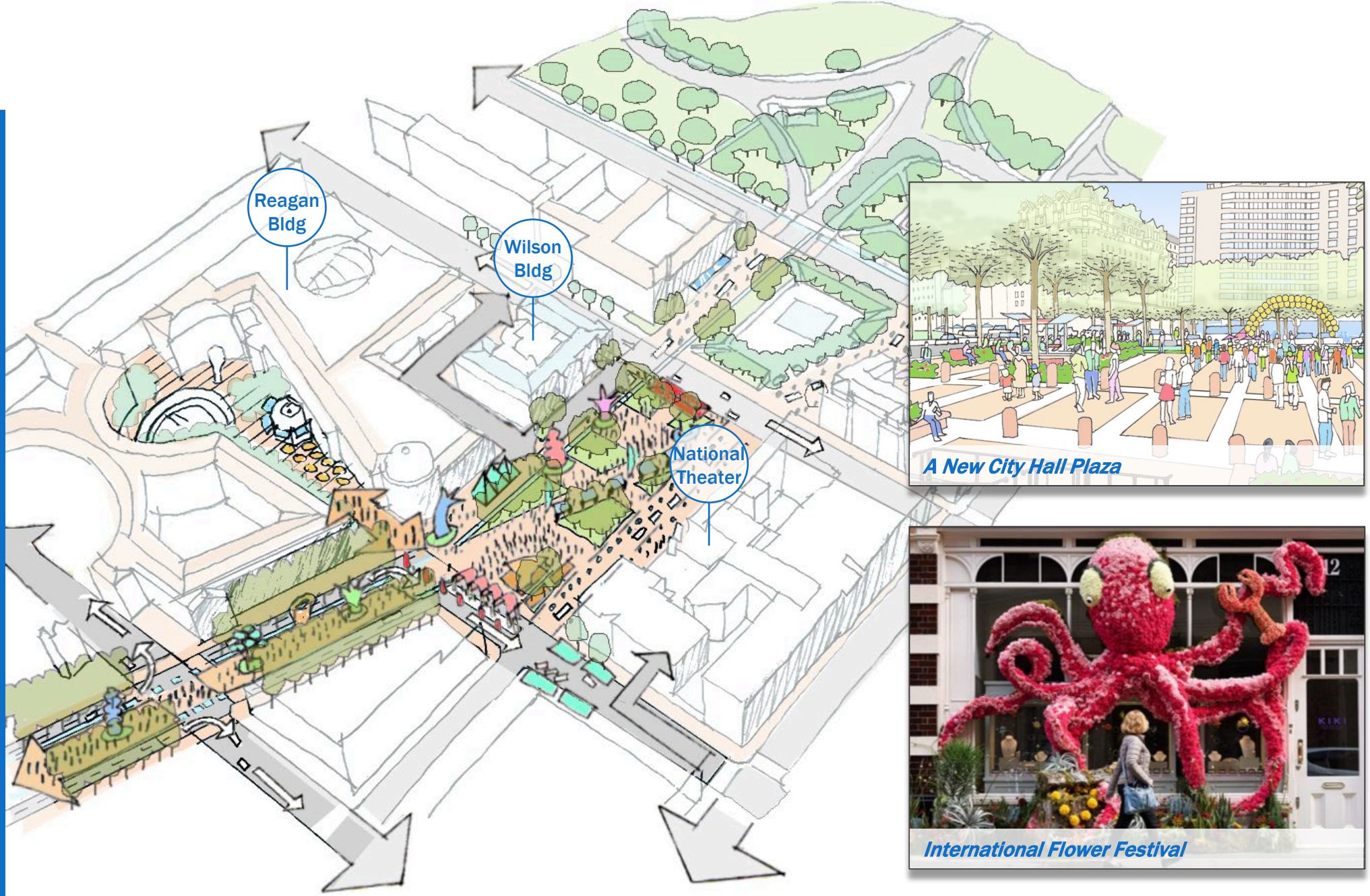




The Avenue as *a Venue*: The Entire Avenue

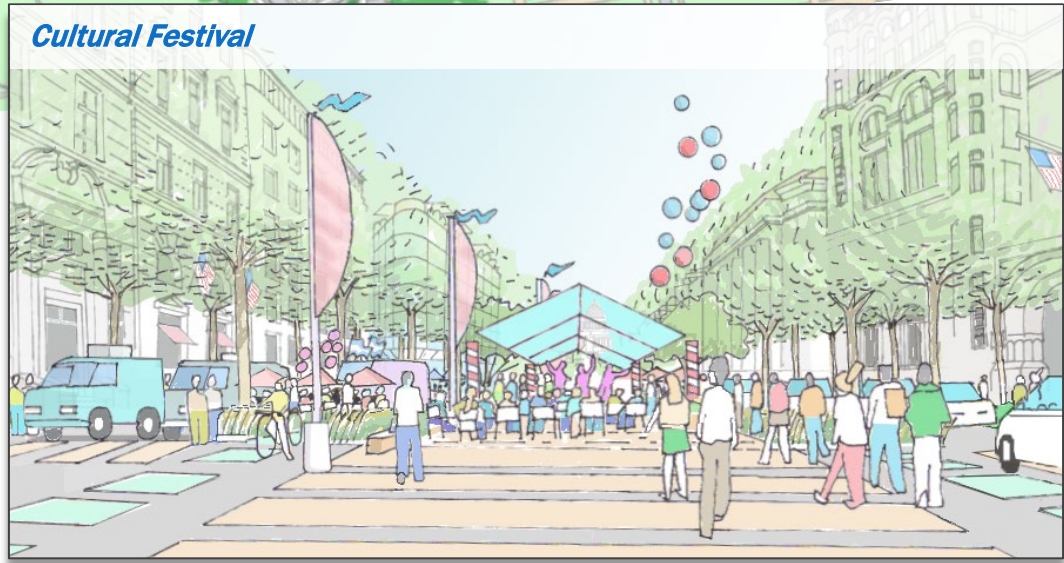
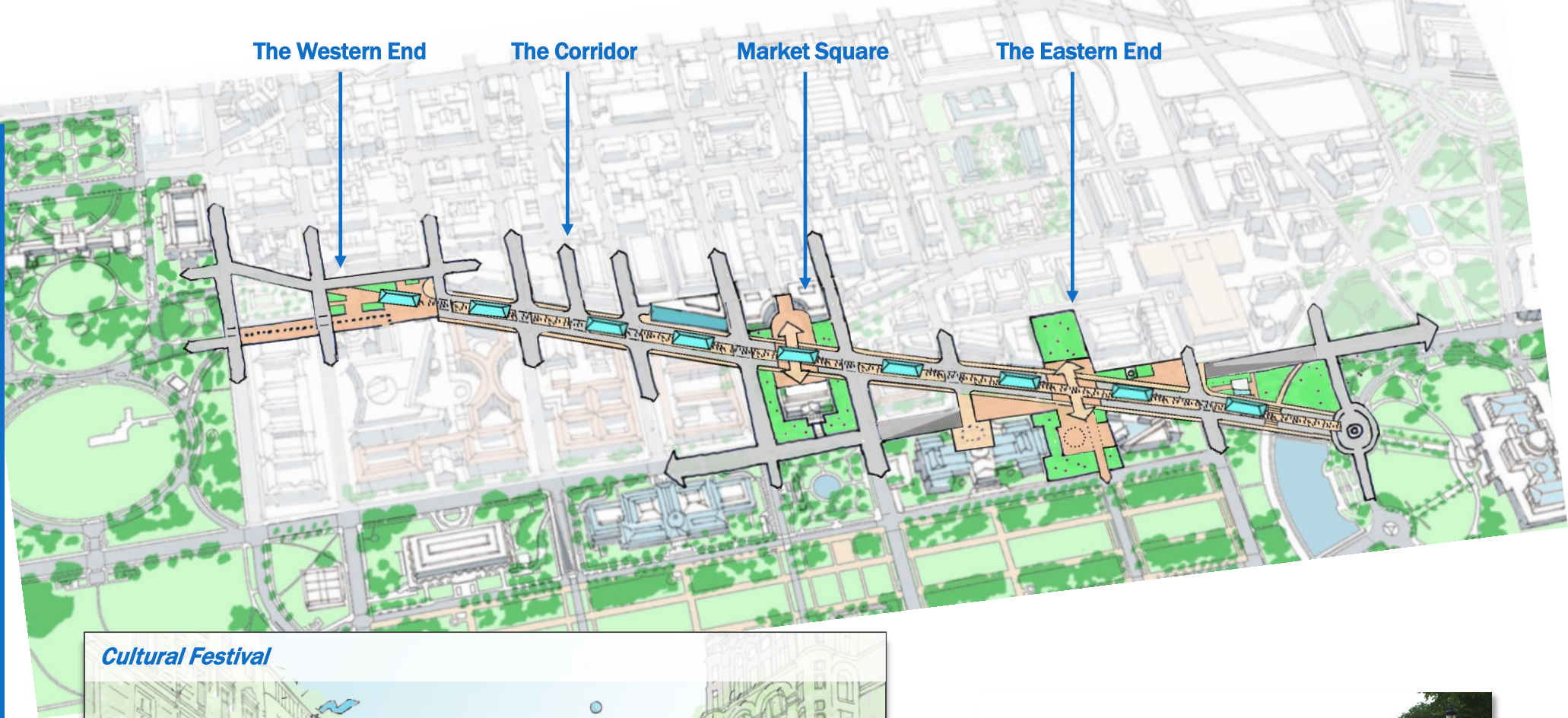
The Avenue as a *Venue*

The Western End



The Avenue as a *Venue*

The Entire Avenue



Public Outreach Activities

136 DAYS

Comment Period
March 16 - July 29, 2022

3

Public Meetings
(Virtual)

65+

Stakeholder
Briefings

450+

Public Comments
Received

8

Outreach
at Events

15+

Media Stories

Top 5 Topics from Public Comments

Freedom
Plaza



#bikedc



Green
Space



Traffic



Events





What's Next?

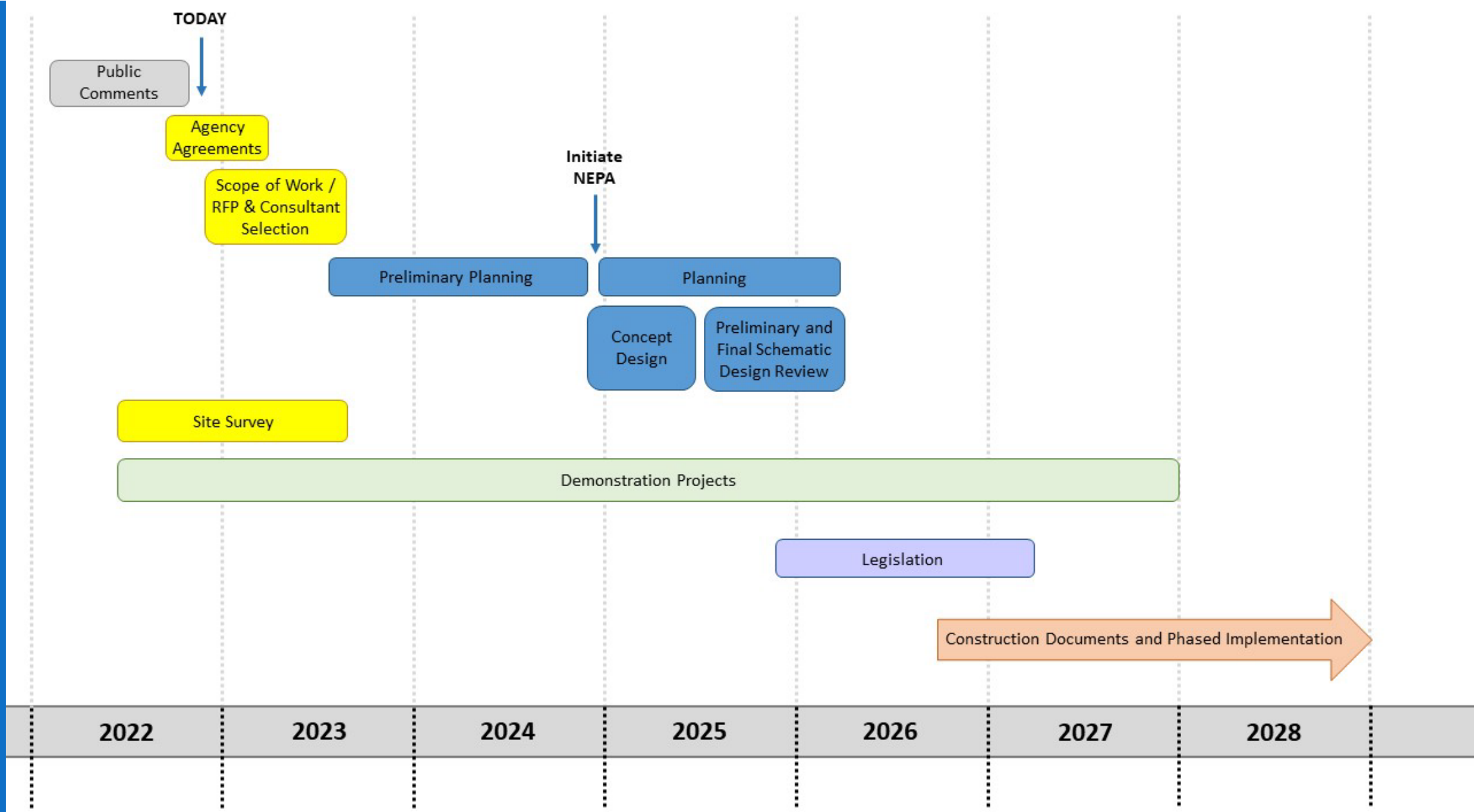




A New Pennsylvania Avenue Plan

- **Public Space Plan (schematic design)**
 - Right sizing, realigning, and improving the ROW and public spaces
 - Infrastructure
- **Implementation Program Recommendations**
 - Operations
 - Maintenance
 - Administration

General Timeline



Thank You

