



# Safe Routes to School Regional Meeting

Co-hosted by  
Greater Washington DC Region Safe Routes to  
School Network  
and the  
National Capital Region Transportation Planning  
Board Bicycle and Pedestrian Subcommittee





# Welcome!

Michael Farrell

Transportation Planner

Metropolitan Washington Council of  
Governments/Transportation Planning Board

Christine Godward Green

Regional Policy Manager

Greater Washington DC Region Safe Routes  
to School Network





# Introductions



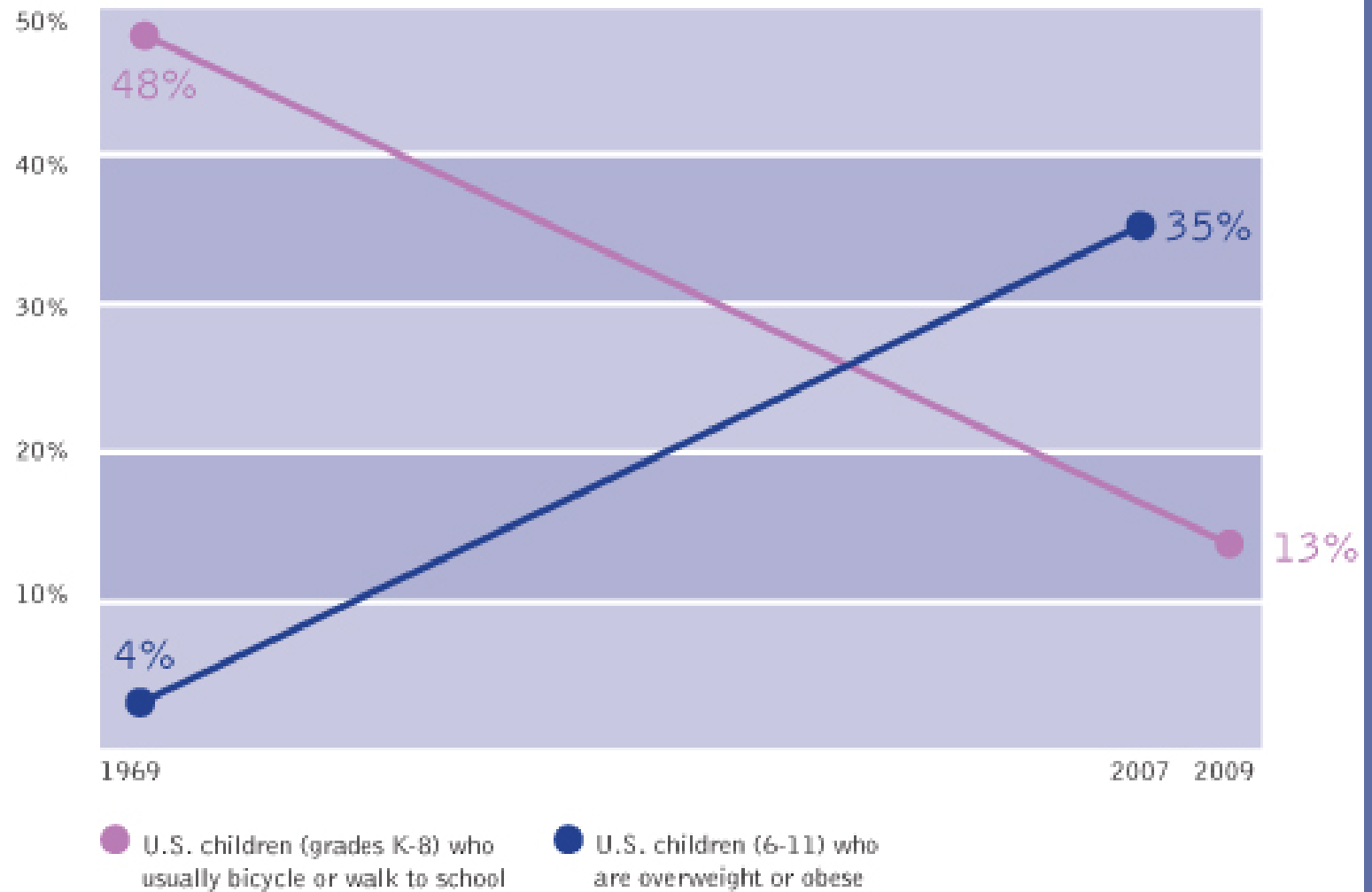


# The Depth of Safe Routes to School



# Why

## Decreased activity leads to more overweight and obese children





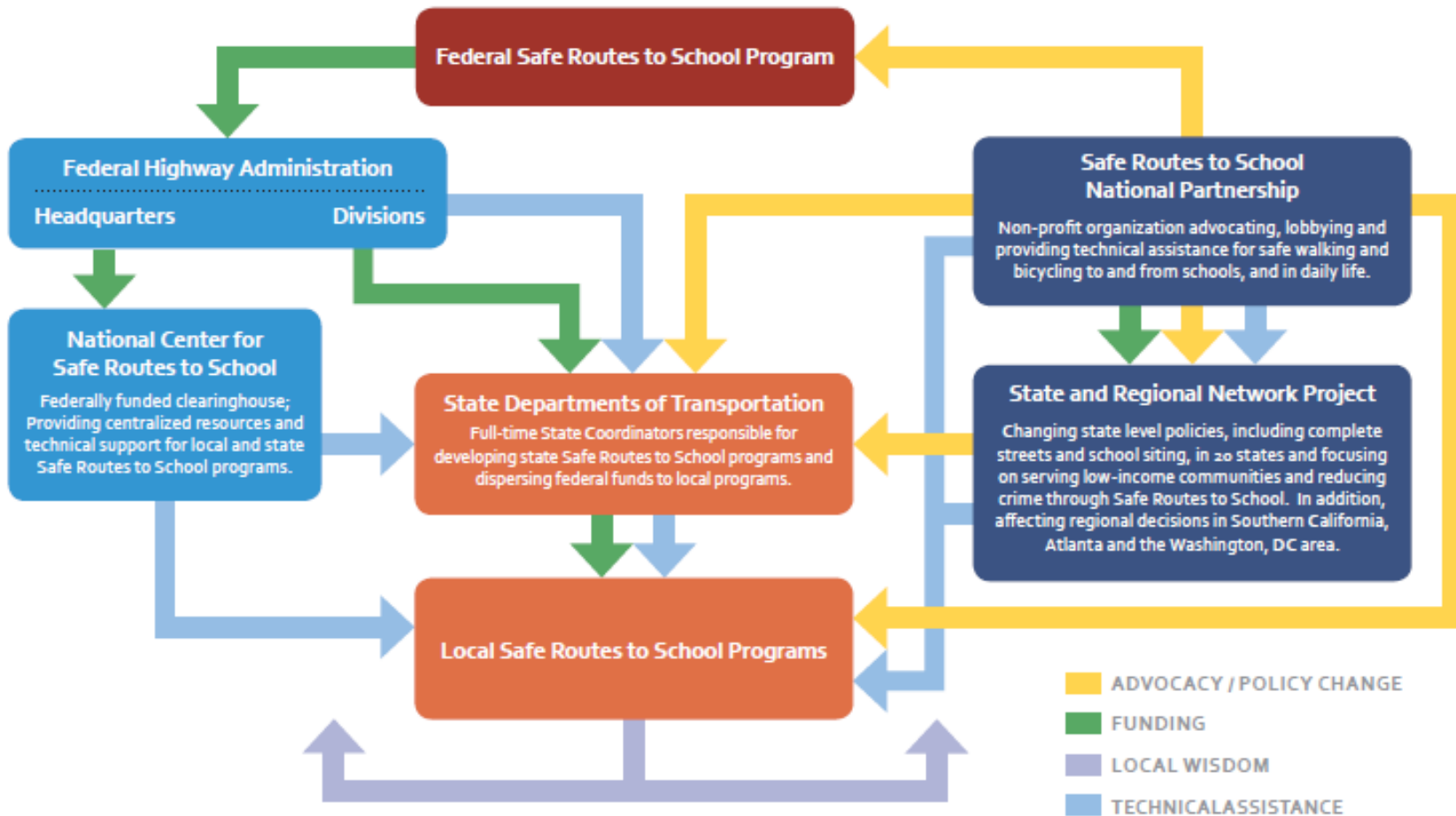


# History

- ✦ Started in Denmark
- ✦ California adopted legislation in 1999
- ✦ Federally funded pilot program in 2000
- ✦ SAFETEA-LU Legislation in 2005



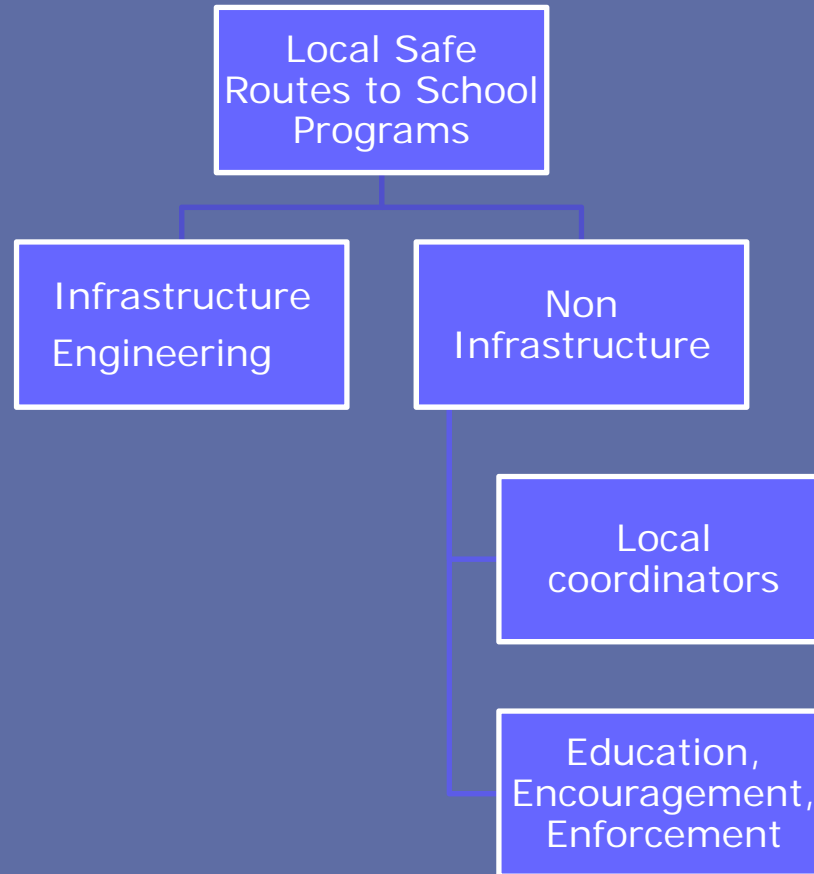
## Safe Routes to School Organizations — How We Collaborate





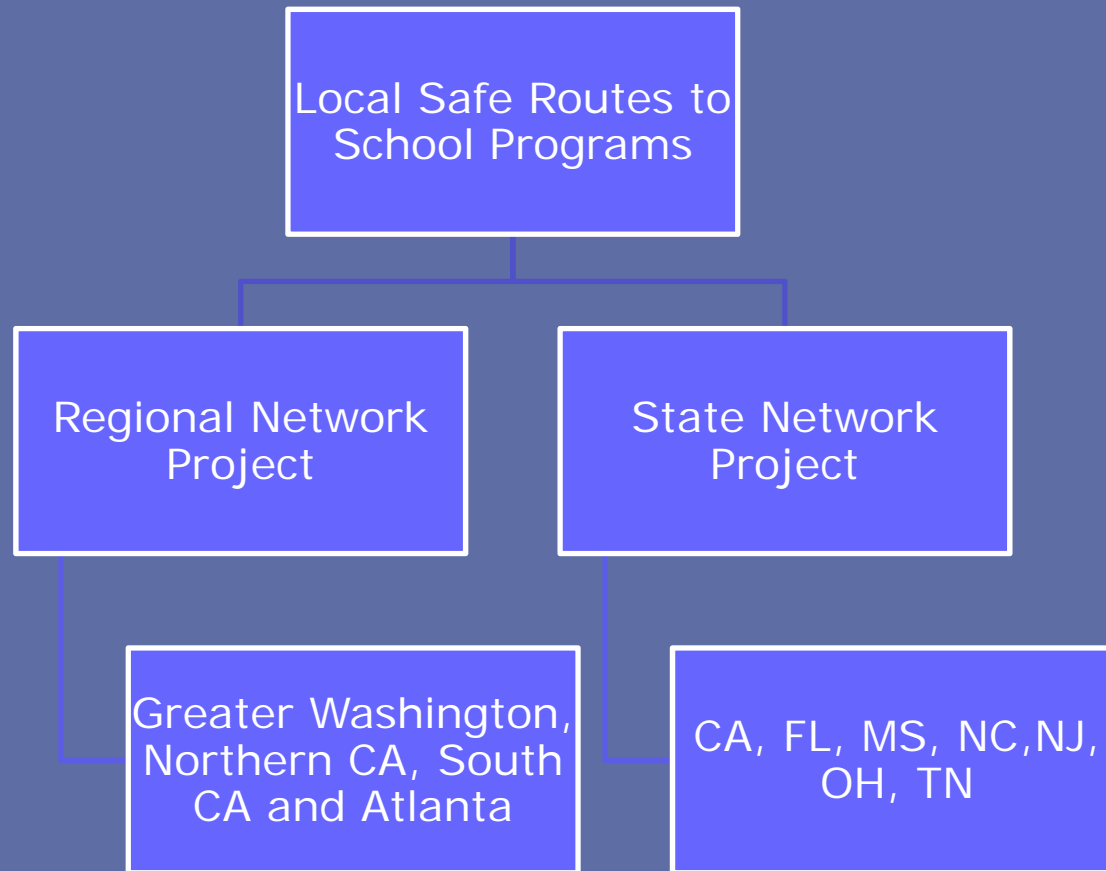


# State Funding





# Safe Routes to School National Partnership





# Safe Routes to School

Safe Routes to School is now a movement. Funding has changed but the momentum moves us forward.



Wolfie's Bike Train, Wolftrap Elementary School, Fairfax/Photo by Jeff Anderson



Safe Routes  
to School  
**National  
Partnership**

GREATER WASHINGTON DC



# National Momentum

- ✦ Partner in Let's Move Active Schools
- ✦ Every Body Walks





# State Momentum

- ✦ District Department of Transportation
- ✦ Maryland State Highway Administration
- ✦ Virginia Department of Transportation



Gladys Noon Spellman,  
Cheverly





# Regional Momentum

- ✦ 8 Full or part-time Safe Routes to School Coordinators
  - ✦ Alexandria, Arlington, DC, Fairfax, Loudoun, Montgomery, Prince William, Takoma Park
- ✦ Safe Routes to School infrastructure in eight communities
  - ✦ Alexandria, Arlington, DC, Fairfax, Frederick, Montgomery, Prince George's, Prince William





# Regional Momentum

- ✦ MWCOG and the TPB
  - ✦ Bicycle and Pedestrian Plan for the National Capital Region
  - ✦ Long Range Transportation Plan and Six-Year Transportation Improvement Program





# Regional Momentum

## Greater Washington DC Region Safe Routes to School Network

Increases in physical activity through walking and bicycling to school and in daily life.





# Safe Routes to School Regional Meeting





# Lightening Round





# Break





# Benefits of Safe Routes to School





# Funding Safe Routes to School





# Networking Lunch

**School:** activities at schools, school transportation policy Room 1

**Transportation:** infrastructure, departments of transportation Big Room

**Health:** health departments, building the health case Room 2







# Aha-moments

What is the first thing that comes to your mind right now?



What is needed to move  
Safe Routes to School  
forward in your  
jurisdiction?





What are the next steps to  
continue the momentum  
of this meeting?



Were you looking for any information today that you did not hear discussed?





# Immediate Next Steps

- ✦ Sending email with information
  - ✦ Presentations and participants list
  - ✦ Greater Washington region case studies
  - ✦ Opt out from email list



Thank you!





# How to find us

## Website

[www.saferoutesgreaterwashington.org](http://www.saferoutesgreaterwashington.org)

## Facebook

Safe Routes Greater Washington

## Twitter

@SafeRoutesDC







# Contact

Christine Godward Green  
Regional Policy Manager

[christine@saferoutespartnership.org](mailto:christine@saferoutespartnership.org)  
202.596.1328

