

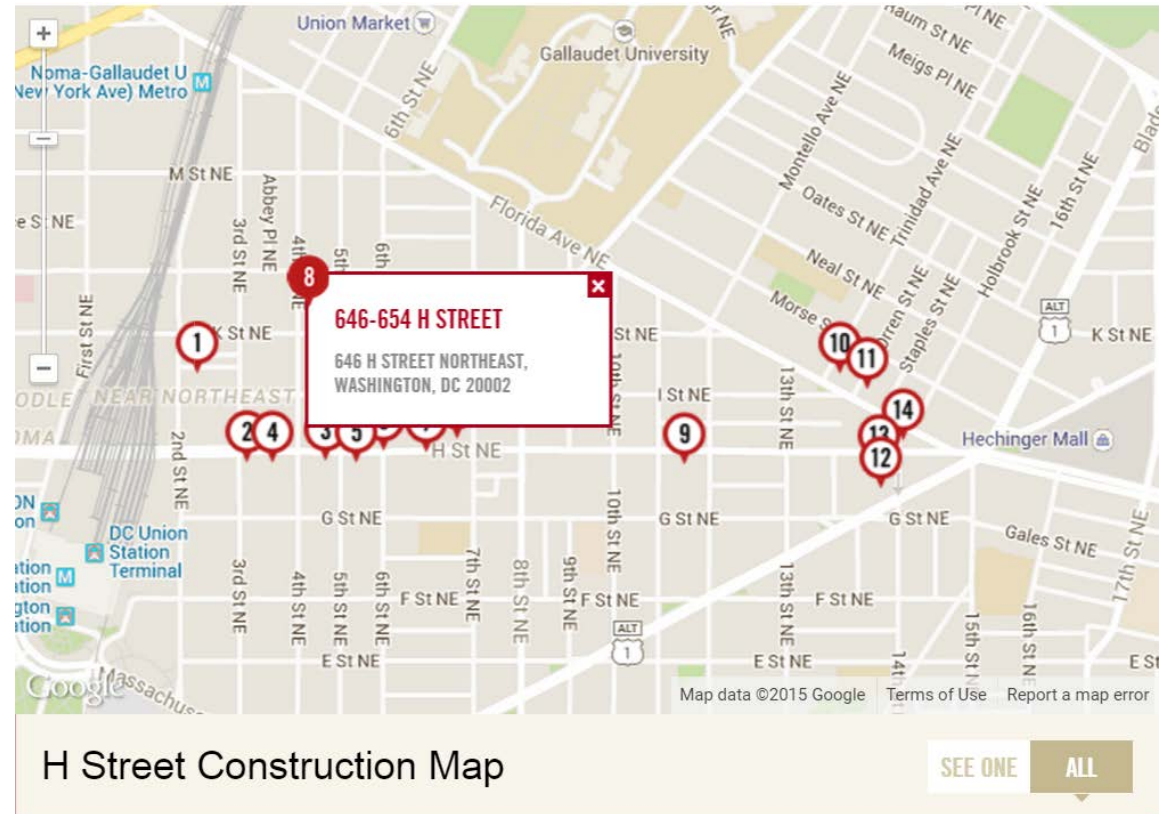


# DISTRICT PERMITTING: FREIGHT CONSIDERATIONS IN DEVELOPMENT

July 9, 2015 | Laura Richards

# Agenda

- District regulations
- Zoning Regulation Rewrite
- Development process
- Freight considerations
- Freight review tools
- Examples/Issues
- Construction trucks



Map from: <http://dc.curbed.com/archives/2015/03/mapping-the-construction-sites-in-h-street-corridor.php>

# District of Columbia Municipal Regulations (DCMR)

- Zoning Regulations
  - Title 11 of the DCMR regulates the use of land, height and size of buildings, the size of lots, provision of yards, parking, and more
  - DCMR 11-22 Provides the authority to require loading facilities and outline the details required including size and number of loading berths, platforms, and service/delivery spaces, access to/from loading, exceptions, etc.

DCMR 11-22

11 = (Zoning)

22 = (Loading)

**OFF-STREET LOADING FACILITY REQUIREMENTS**

**Title:** 11 ZONING

Click on a Rule Number to browse the Rule Home.  
Click on a table header to re-sort the results.  
Press **Ctrl-F** to search by text.

Total Records: 6

Rule Number	Rule Heading	Latest Version	Effective Date
11-2200	AUTHORITY TO REQUIRE LOADING FACILITIES	<a href="#">View Text</a>	
11-2201	SCHEDULE OF REQUIREMENTS FOR LOADING BERTHS, LOADING PLATFORMS, AND SERVICE/DELIVERY LOADING SPACES	<a href="#">View Text</a>	4/24/2015
11-2202	EXCEPTIONS TO THE SCHEDULE OF REQUIREMENTS	<a href="#">View Text</a>	
11-2203	LOCATION OF LOADING BERTHS, LOADING PLATFORMS, AND SERVICE/DELIVERY LOADING SPACES	<a href="#">View Text</a>	12/8/2000
11-2204	ACCESS, MAINTENANCE, AND OPERATION	<a href="#">View Text</a>	
11-2205	RULES OF INTERPRETATION	<a href="#">View Text</a>	

# Zoning Regulation Rewrite (ZRR)

- Proposed Loading Changes:
  - 30 foot loading berths ACROSS THE BOARD
  - Required internal access
  - Alley access if an improved alley of 15 feet or more exists
  - Platform specifications and requirements

## Loading Documents (1)

Date	Title/Description
09-Dec-2008	<a href="#">Zoning Commission Guidance 10/16/08</a> - Guidance from the Zoning Commission on the Loading Recommendations from the Office of Planning.

## Background Documents (1)

Date	Title/Description
26-Feb-2008	<a href="#">Loading Issues Document</a>

# Development Process

- Building/Plan Permits
  - Zoning, environmental, mechanical/plumbing, electrical, fire, structural review, etc.
    - LOADING BERTHS and ACCESS
    - TRASH and RECYCLING
- Construction Permits
  - OSHA, Traffic Control Devices, Flaggers, Lane/Street Closures, Excavation, Temporary Pavement Marking, Parking, etc.
    - NUMBER OF TRUCKS
    - TRUCK TRAVEL TO/FROM SITE
- Public Space Permits
  - Sidewalks, crosswalks, lighting, street furniture, bus stops, curb radii, intersections, signals, signs, etc.
    - ACCESS TO LOADING AND TRASH
    - NUMBER OF DELIVERYS EXPECTED
    - SIZE OF TRUCKS EXPECTED

# Permit Overlap

- Aspects of each permit affect other permits
- Timing becomes an issue

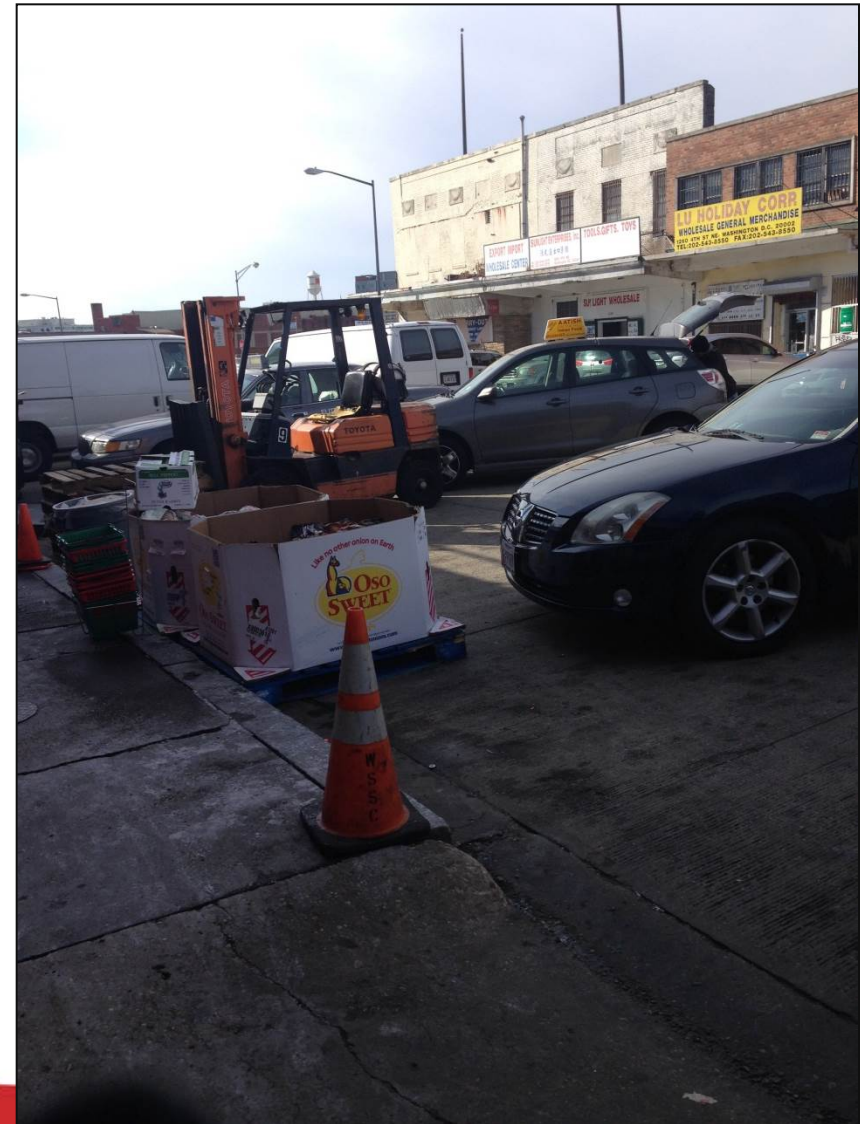
## Deliveries/Loading Berths:

- Curb cut locations, alleys, and building layout are determined in zoning (OP) review but each of these affects loading
- Priorities and understanding of freight logistics differ

Solution (?): Preliminary Design Review Meeting (PDRM)

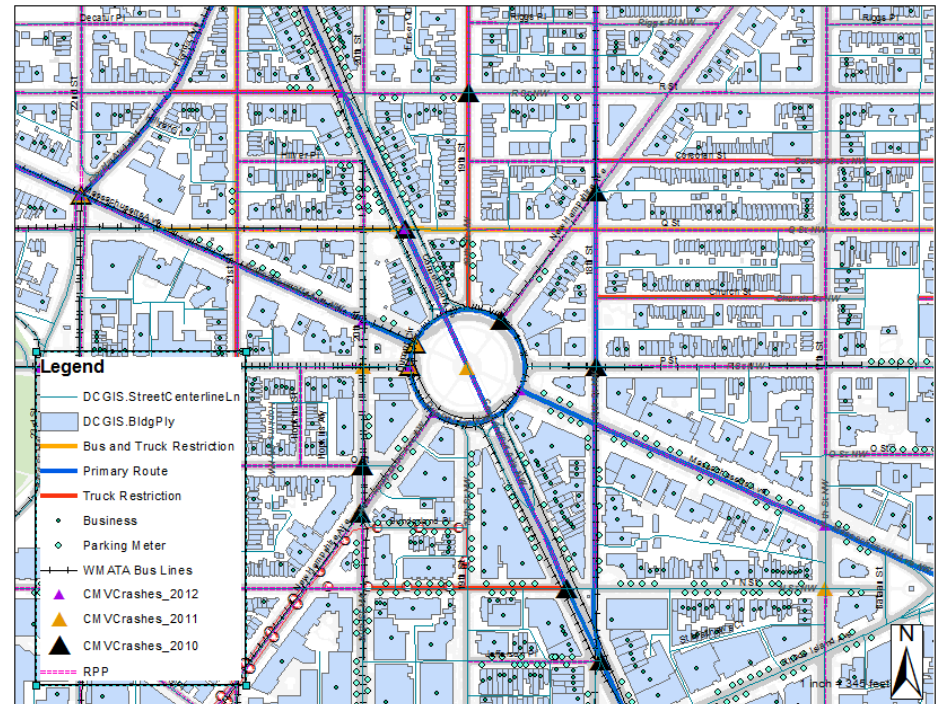
# Delivery/Loading Considerations

- Number and dimensions of loading facilities
- Required platforms and service/delivery spaces
- Prescribed use and known tenant information
- Internal and External access
  - Parking
- Truck turn movements (Autoturn diagrams)
- Trash and recycling
- Curb cuts, corner radii, line of sight
- Current curbside uses, crash history, street information



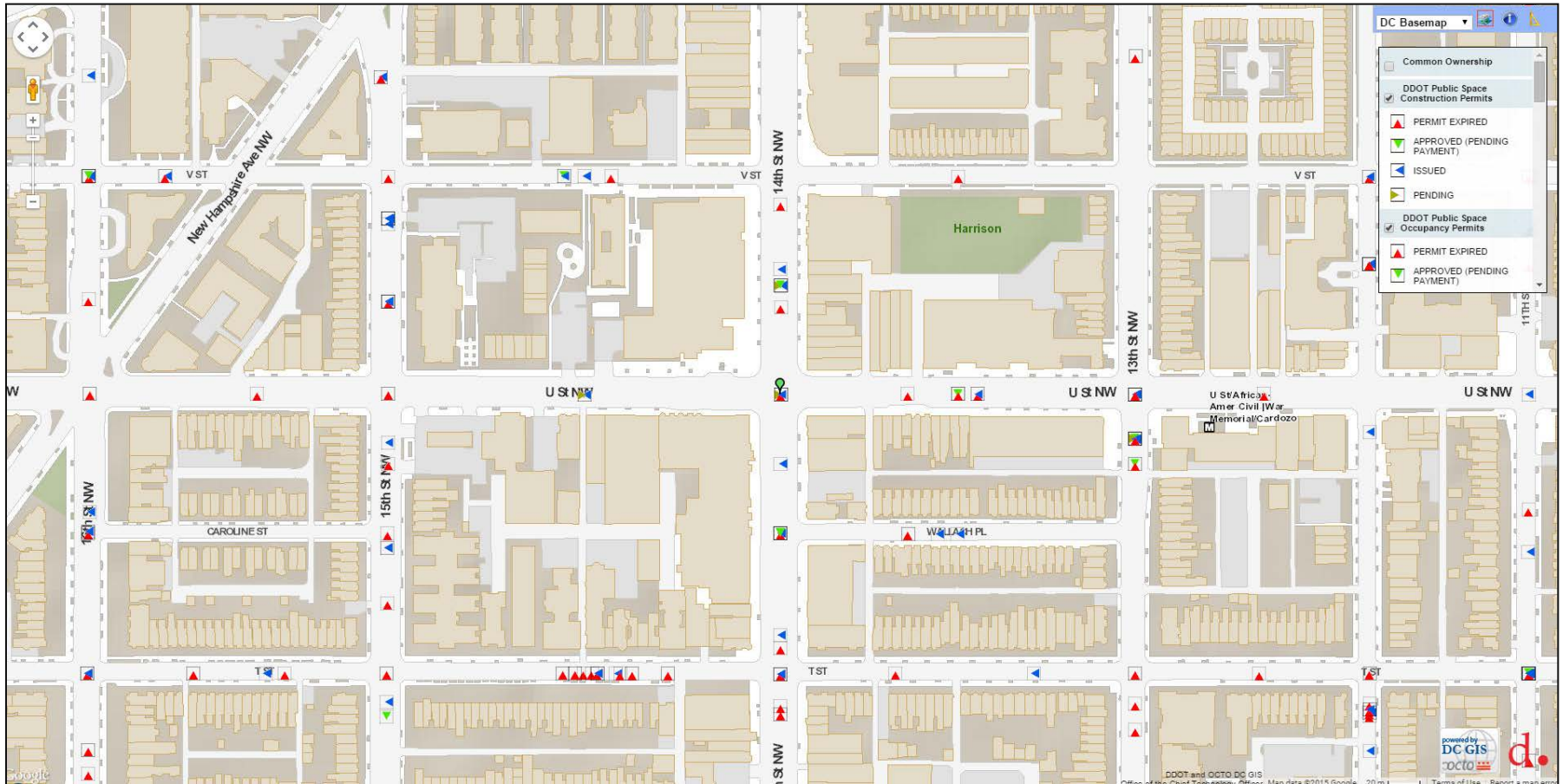
# Permit Review Tools

- Data
  - Loading zones
  - Delivery frequency and truck size based on use
  - Curbside loading zone model
  - CMV crash and ticket data
- Truck and bus map
- Autoturn template and diagrams
- Industry knowledge and contacts
- Education

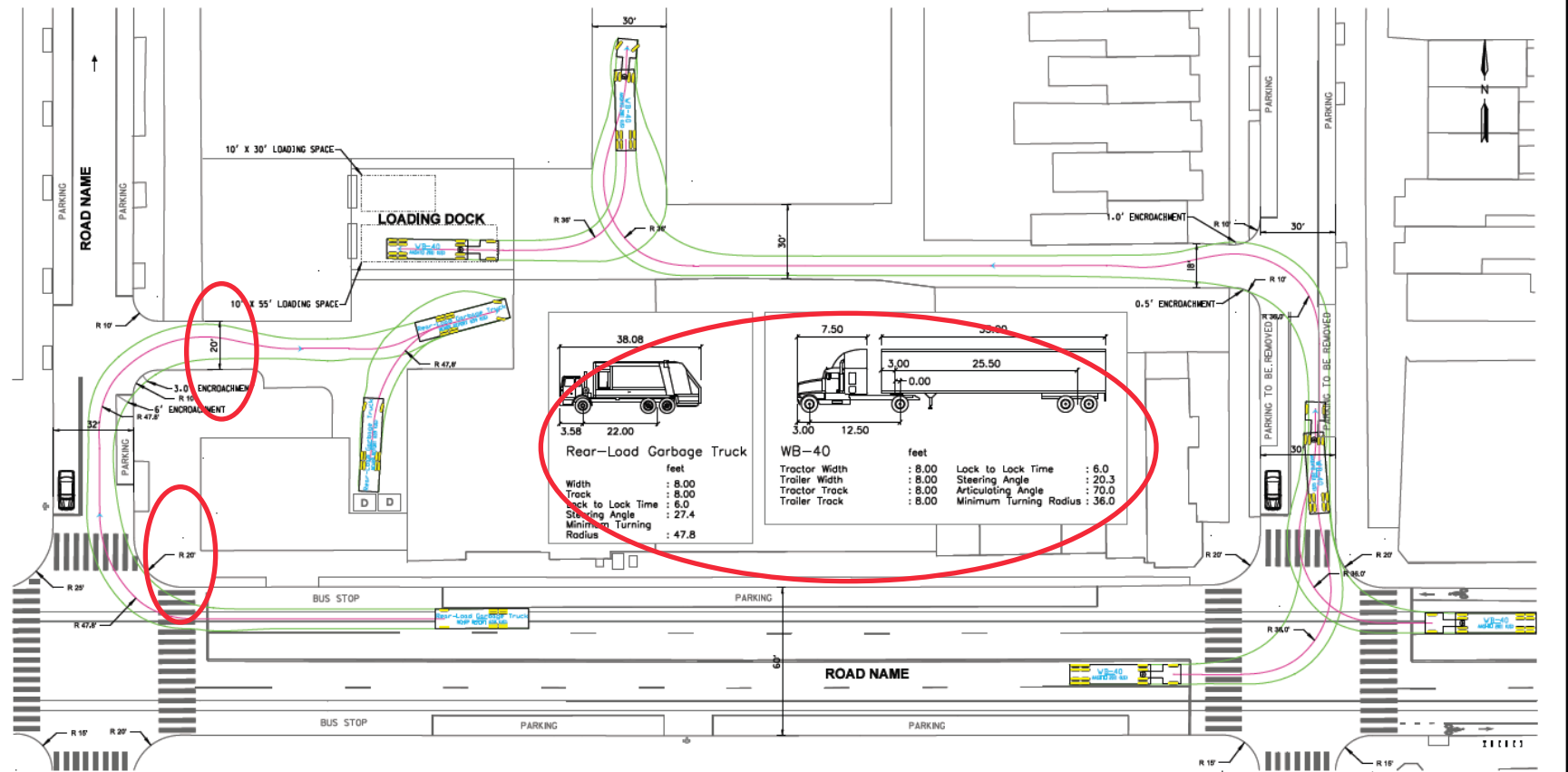




# Construction Trucks



REV	DATE	PROJECT	SHEET NO.	TOTAL SHEETS



- AUTOTURN PLANS MUST INCLUDE:**
- EXISTING AND PROPOSED LANE MARKINGS INCLUDING CROSSWALKS, MEDIANS/REFUGE ISLANDS, BICYCLE LANES, BUS LANES, ETC.
  - EXISTING AND PROPOSED/RELOCATED CURBSIDE USES, INCLUDING BUS STOPS, RESIDENTIAL PERMIT PARKING, METERS, AND COMMERCIAL LOADING ZONES.
  - BICYCLE INFRASTRUCTURE AND FACILITIES.
  - ALL CURB RADII, GUTTER PAN LOCATIONS, CURB CUT WIDTH, AND ROADWAY WIDTH LABELS.
  - TRUCK TURN MOVEMENTS TO, FROM, AND WITHIN THE LOADING DOCK, ACCESS AND EXIT FROM THE SITE AND/OR DRIVEWAY, ROUTING TO AND FROM SITE, CRITICAL INTERSECTIONS, AND/OR ACCESS TO AND FROM TRASH LOADING FACILITY/LOCATION.
  - TRUCK PROFILE, AND TRUCK TURN RADII, FULL PATH OF TRUCK



**AUTOTURN ENTRANCE MOVEMENTS EXAMPLE**

D.C. DEPARTMENT OF TRANSPORTATION  
POLICY, PLANNING, AND SUSTAINABILITY ADMINISTRATION

PROJECT NAME  
INBOUND/OUTBOUND/  
CRITICAL INTERSECTIONS

PROJECT ENG. \_\_\_\_\_  
DESIGNED BY \_\_\_\_\_  
CHECKED BY \_\_\_\_\_  
DRAWN BY \_\_\_\_\_  
PROJECT MGR. \_\_\_\_\_

WB-40 AUTOTURN MOVEMENTS  
SHEET - 1

DIVISION CHIEF \_\_\_\_\_  
DATE \_\_\_\_\_  
FILE \_\_\_\_\_  
SHEET X OF X

**d.**  
District Department of Transportation

NO.	DESCRIPTION	NAME	DATE

REVISIONS

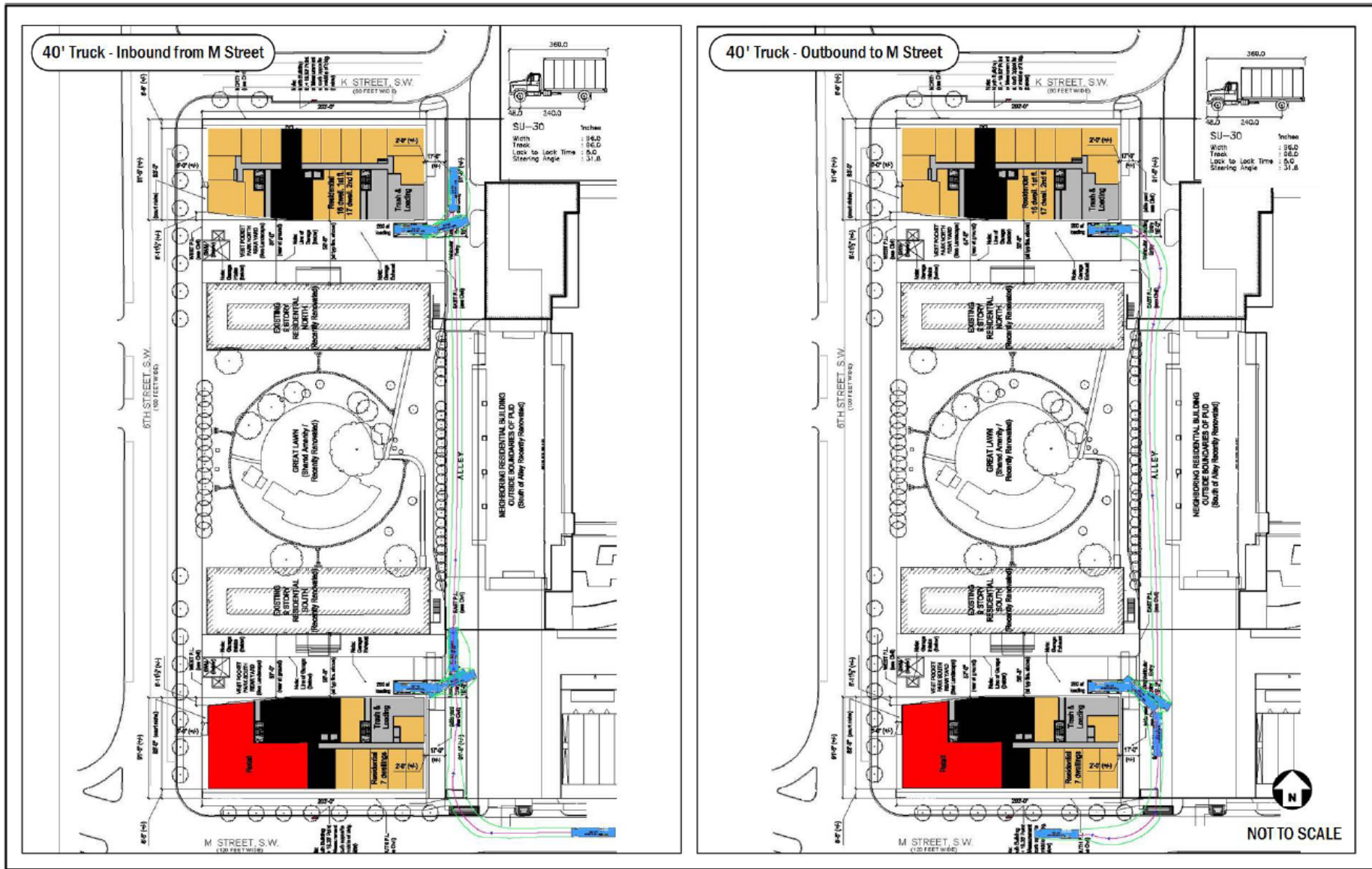
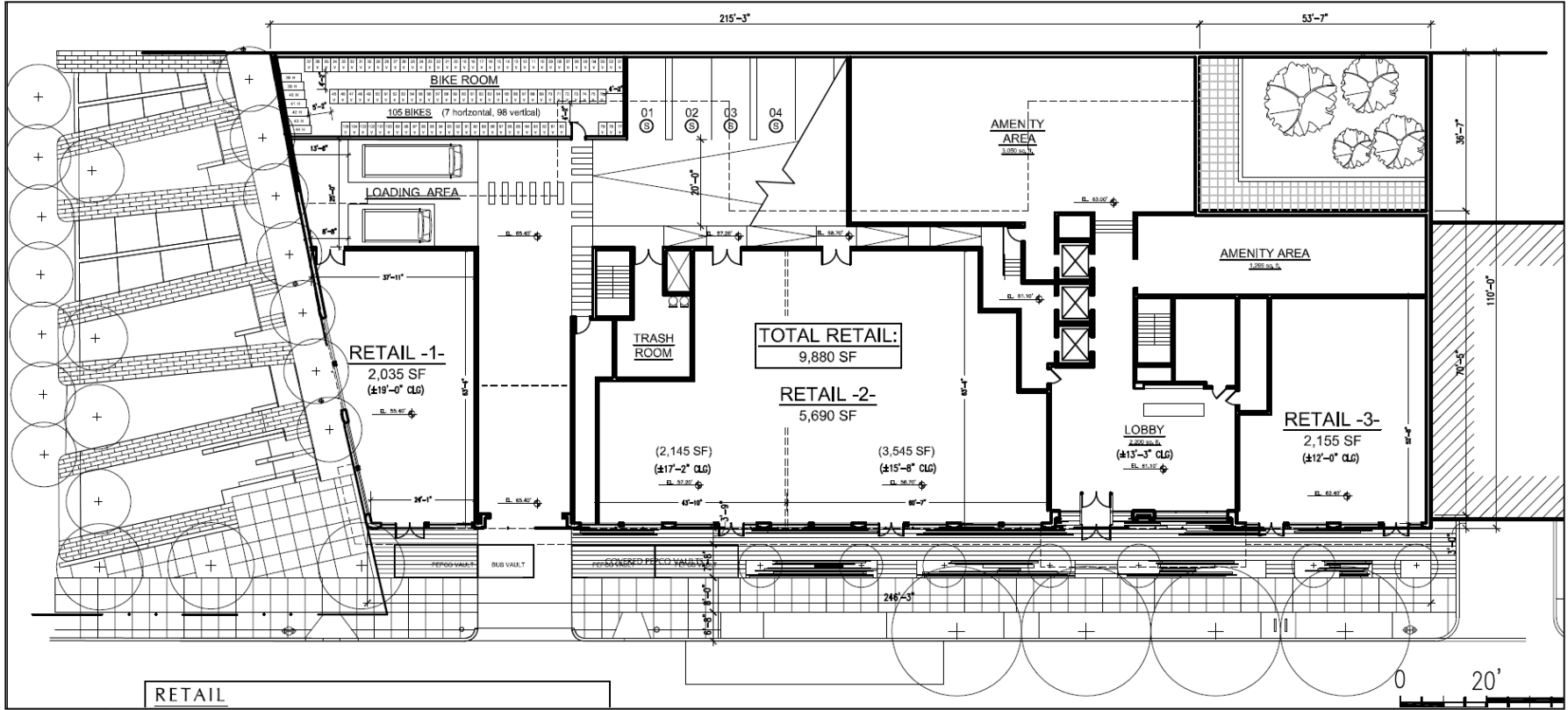


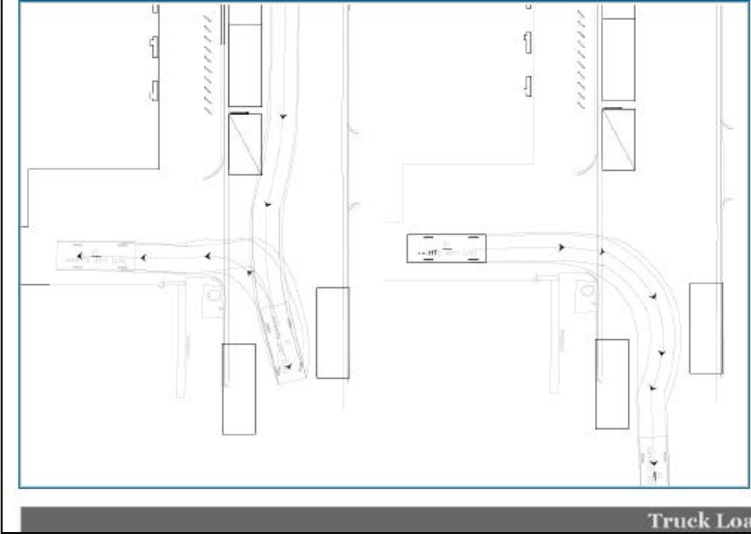
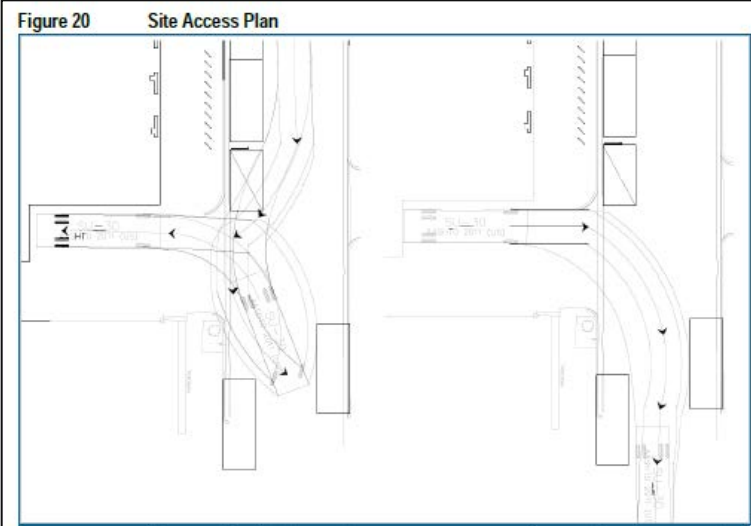
Figure 12: 40' Trash Truck Maneuverability Diagrams - M Street Access



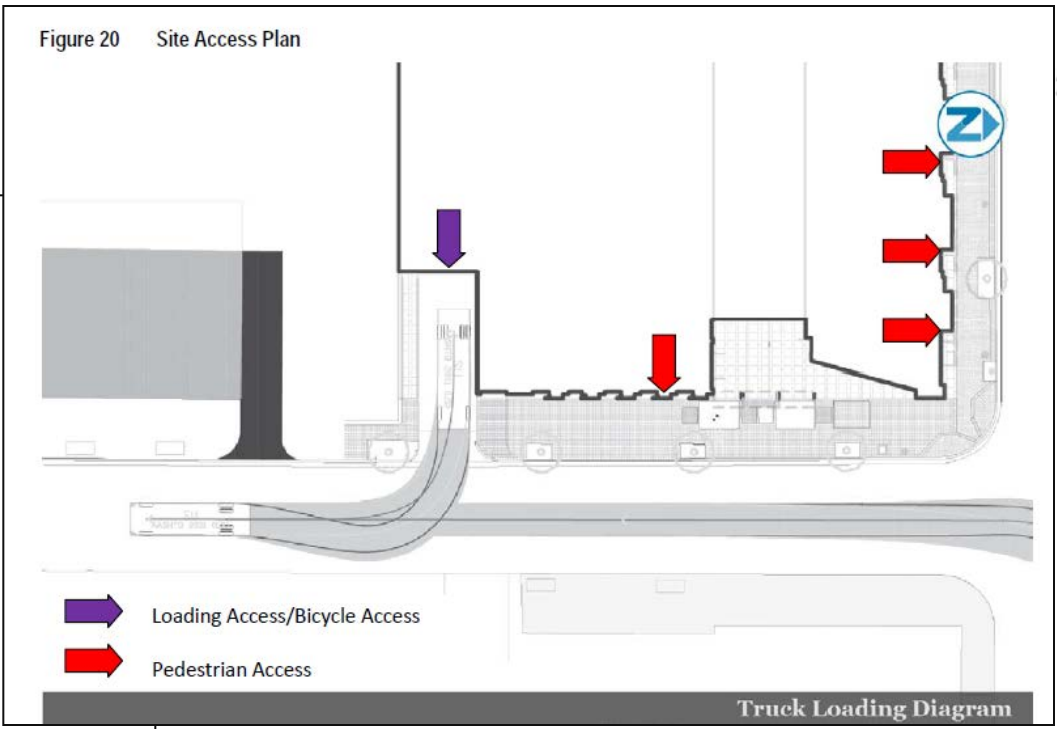


RETAIL

0 20'



Truck Loading Diagram



Truck Loading Diagram

d. delivers

