

# FY 2011 TPB TIGER Grant Application



Presentation to the  
Transportation Planning Board

October 19, 2011

Eric Randall  
Department of Transportation Planning

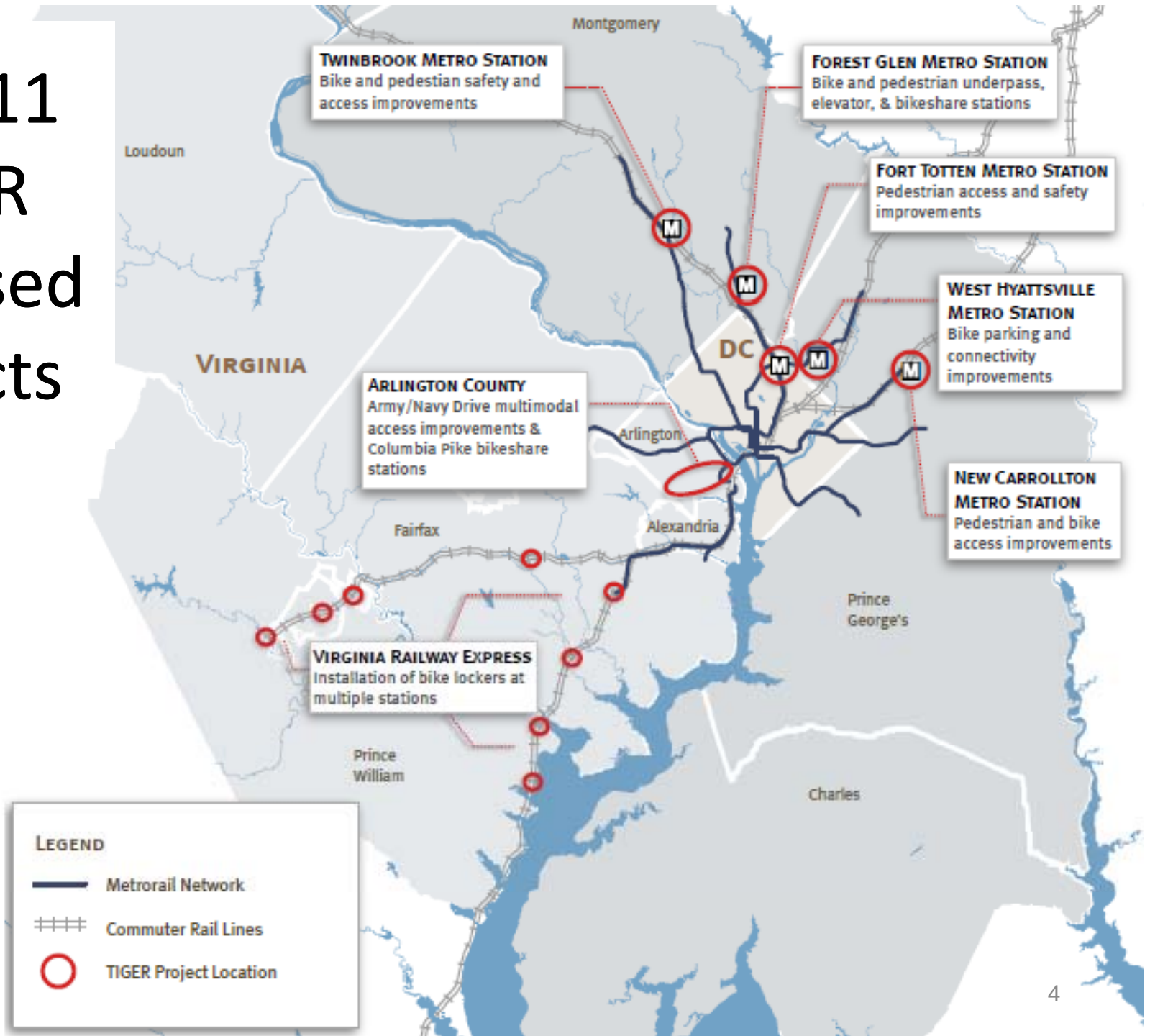
# FY 2011 TIGER Grant Application

- Notice of Funding Availability (NOFA) published July 1.
  - Pre-application submitted: September 30
  - Application due: October 31
- TPB Resolution R3-2012 passed at the September 21 meeting approved the pre-application and development of the final application.

# Criteria for the Selection of Projects

- Small-scale, innovative transportation capital projects:
  - Pedestrian, bicycle, streetscape or other circulation improvements to improve access to rail stations (within ½ mile).
  - Located in an existing, underutilized, or emerging employment or housing center.
  - Demonstrate support and coordination with development in the center (e.g., including private matching funds).
  - Balanced regional growth.
  - Replicable examples that are innovative in design, concept, or implementation.
- Multimodal, multijurisdictional, multi-partnered and difficult to implement under other “modal” funding sources.
- Projects that are a result of previous planning efforts, have completed initial design, and that are “ready to go”.

# FY 2011 TIGER Proposed Projects



# FY 2011 TPB TIGER Application

## Funding Summary for Proposed Projects

### District of Columbia

- Federal: \$3,336,840
- Match: \$834,210 (20 %)
- Total: \$4,171,050 (13 %)

### Maryland:

- Federal: \$15,700,498
- Match: \$4,056,937 (20.5 %)
- Total: \$19,757,435 (63 %)

### Virginia

- Federal: \$5,200,804
- Match: \$1,931,601 (27 %)
- Total: \$7,132,405 (23 %)

### TOTAL:

- Federal: \$24,238,142
- Match: \$6,822,748  
(22.0 %)
- **Total: \$31,060,890**

*Revised: October 19*

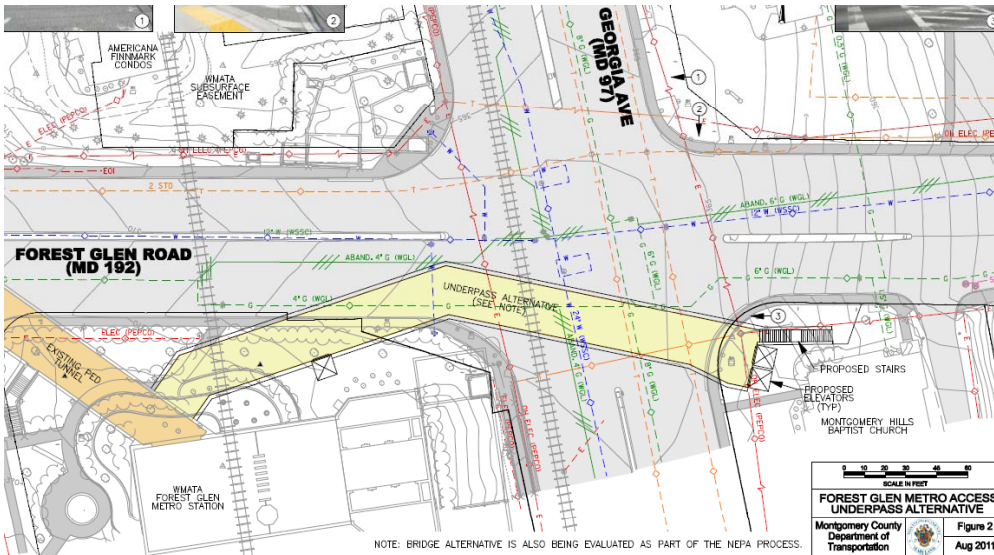
# TPB TIGER Application Outline

- Application Narrative (25 pages or less)
  - Project Overview,
  - Project Need and Regional Challenges,
  - Proposed Project Package (short project descriptions),
  - Project Parties, Grant Funds and Sources,
  - How the project package addresses Selection Criteria,
  - Project Readiness, NEPA, and Certifications.
  - Appendices will include:
    - Letters of support.
    - Additional information about the project components.
    - Detailed BCA description and model.

# Benefit Cost Analysis

- TIGER applications require a detailed Benefit-Cost Analysis (BCA), with economic and social benefits and costs quantified.
- Project Selection Criteria:
  - ❖ State of Good Repair,
  - ❖ Economic Competitiveness,
  - ❖ Livability,
  - ❖ Environmental Sustainability,
  - ❖ Safety.
- Other criteria for selection include jobs created and the demonstration of innovation and partnership.

# Forest Glen Metro Access Project



- Underpass beneath Georgia Avenue (MD 97) linking Forest Glen Metrorail Station to the sidewalk serving Holy Cross Hospital; and 10 bikeshare stations.
- Project Cost: \$17,600,000 (56% of proposal)

## Benefits

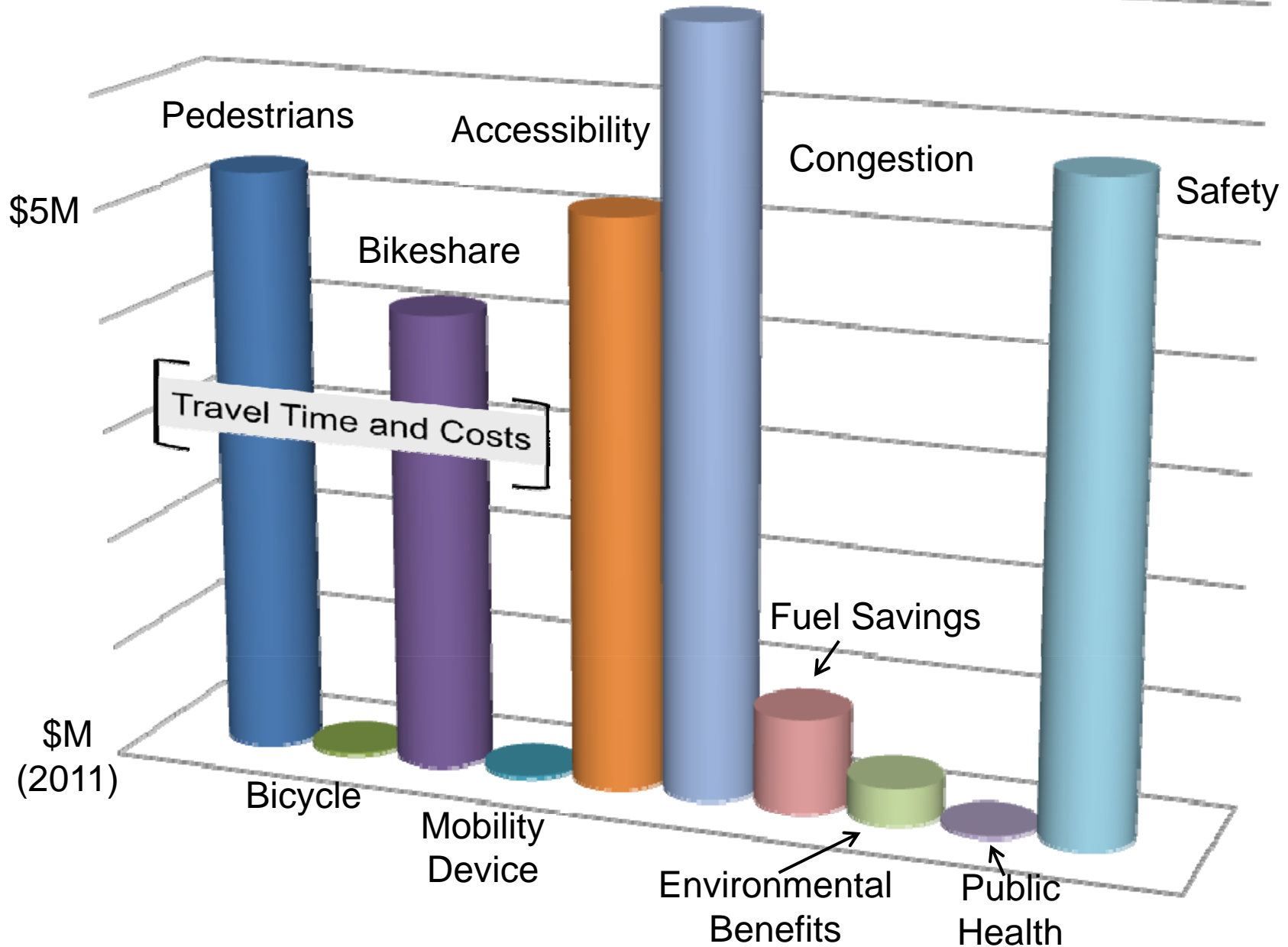
- Increases Overall Safety
- Reduces Travel Costs
- Reduces Congestion
- Improves Accessibility
- Public Health Benefits
- Good for the Environment

## Costs

- Construction Costs
- Construction Congestion
- Bicycling Safety



# Forest Glen Metro Access Project – BCA



# Benefit Cost Analysis Summary

Overall Proposal (2012 to 2035)	in US\$ 2011
Total Costs	(\$ 86.1M)
Total Benefits	\$ 185.6M
Net Value	\$ 99.4M
Internal Rate of Return (IRR)	13.49%
Benefit to Cost Ratio	2.15

- Presented to USDOT in menu format, at 3% and 7% discount rates.
- Individual project IRRs range from 8% to 27% (US\$ 2011).

# Final Steps for FY 2011 TIGER Grant Application Submission

- TPB review and approval of the application for submission to USDOT.
- Final review of Benefit Cost Analysis and incorporation into narrative.
- Collect Letters of Support and grant administrative material.
- Submit application by October 31.

# FY 2011 TPB TIGER Grant Application

