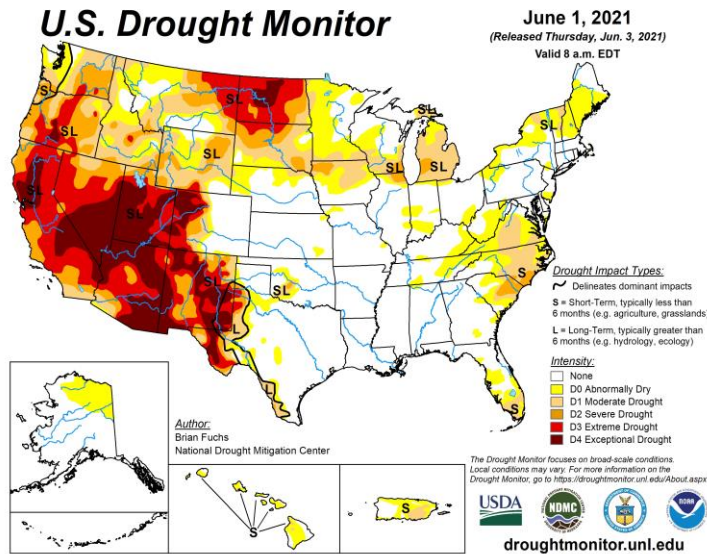


# Regional Drought and Water Supply Status

## June 2021

### SUMMARY OF CURRENT CONDITIONS (as of June 7, 2021) – NORMAL

The latest U.S. Drought monitor released on June 3 indicates that the COG region is currently free of drought, although our region received below normal amounts of precipitation during this past month. Potomac streamflows are below median levels, and local reservoirs remain full. Long-term forecasts indicate that we should remain drought free over the next three months.

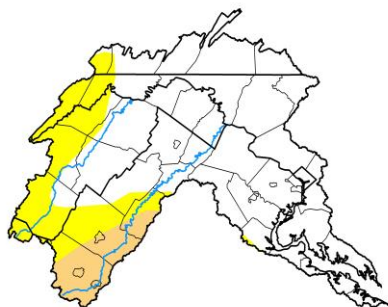


### Drought Stage - Normal

The current drought stage as defined in [COG's water supply and drought response awareness plan \(the Plan\)](#) is Normal. COG's Plan focuses on tracking and responding to drought conditions as it relates to regional water supply.

Note that a 'Megadrought' persists in western U.S., as another extremely dry year develops. The region has been in a state of drought nearly every year since 2000, when the Drought Monitor was established. That 20-year-long stretch rivals any drought in the last 1,200 years, a team of [scientists reported last year](#).

### U.S. Drought Monitor Potomac Watershed



**Drought Stages VADEQ and MDE - Normal**  
COG jurisdictions that are monitored by the Virginia Department of Environmental Quality ([VADEQ](#)) and Maryland Department of the Environment ([MDE](#)) are under a normal status.

### Streamflow, reservoir, and groundwater levels – Below Normal to Normal

Potomac streamflows are currently below median levels. Most of the regional groundwater wells monitored are at normal levels, and local reservoirs are full.

### Forecasts and Precipitation – Normal to below Normal

The latest U.S. Seasonal Outlook indicates that drought is not likely in the COG region over the next three months. The Potomac River Basin received below normal amounts of precipitation over the past 30 days, and the 7-day forecast calls for roughly 2.0 inches of rain in the COG region.

## POTOMAC STREAMFLOW

Instantaneous flows readings on June 7 were:

Little Falls -4,480 cfs (median, 7,480 cfs) Point of Rocks -3,940 cfs (median, 6,200 cfs)

Source: USGS Little Falls: <https://waterdata.usgs.gov/md/nwis/uv?01646500>

Source: USGS Point of Rocks: <https://waterdata.usgs.gov/md/nwis/uv?01638500>

## POTOMAC BASIN PRECIPITATION (as of 6/5/21)

The Potomac Basin received 2.1 inches of rain in the last 30 days, which is 26% to 50% below average.

Source: Middle Atlantic River Forecast Center

<https://www.weather.gov/marfc/BasinPrecipitation30Day>

## GROUNDWATER LEVELS

Most of the groundwater levels are normal in the COG region. A few in Frederick County, MD and Prince William are low. Source:

USGS and Pennsylvania Water Science Center

<https://groundwaterwatch.usgs.gov/statemap.asp?sc=51&sa=VA>

<https://waterdata.usgs.gov/md/nwis/current/?type=gw>

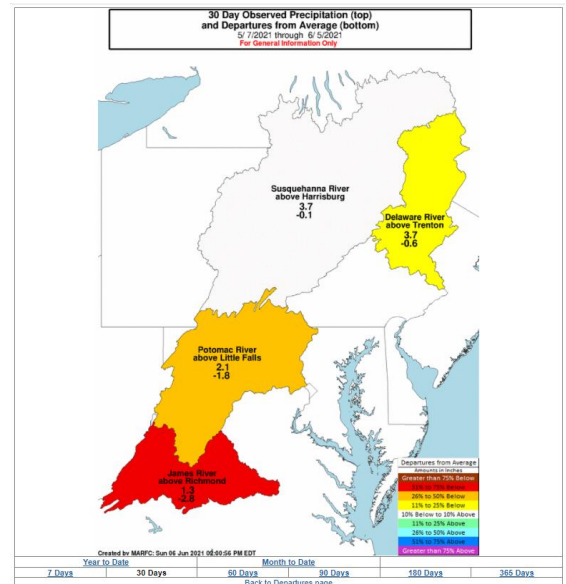
<https://pa.water.usgs.gov/apps/potomac/>

## DROUGHT OUTLOOK

The latest U.S. Seasonal Outlook indicates that drought is not expected in the COG region over the next three months.

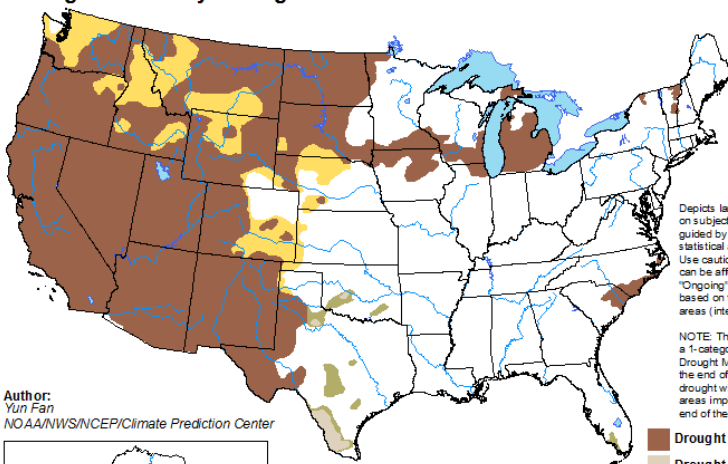
Source:

[http://www.cpc.ncep.noaa.gov/products/expert\\_assessment/sdo\\_summary.php](http://www.cpc.ncep.noaa.gov/products/expert_assessment/sdo_summary.php)



## U.S. Seasonal Drought Outlook Drought Tendency During the Valid Period

Valid for May 20 - August 31, 2021  
Released May 20



Depicts large-scale trends based on a subjectively derived probabilities guided by short- and long-range statistical and dynamical forecasts. Use caution for applications that can be affected by short lived events. "Ongoing" drought areas are based on the U.S. Drought Monitor areas (intensities of D1 to D4).

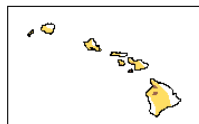
NOTE: The tan areas imply at least a 1-category improvement in the Drought Monitor intensity levels by the end of the period, although drought will remain. The green areas imply drought removal by the end of the period (D0 or none).

- Drought persists
- Drought remains but improves
- Drought removal likely
- Drought development likely



<http://go.usa.gov/3eZ73>

Author:  
Yun Fan  
NOAA/NWS/NCEP/Climate Prediction Center



## RESERVOIR LEVELS

Drinking water reservoirs at Jennings Randolph and Little Seneca are full.

Source: <http://www.nab-wc.usace.army.mil/nab/potopub.html>

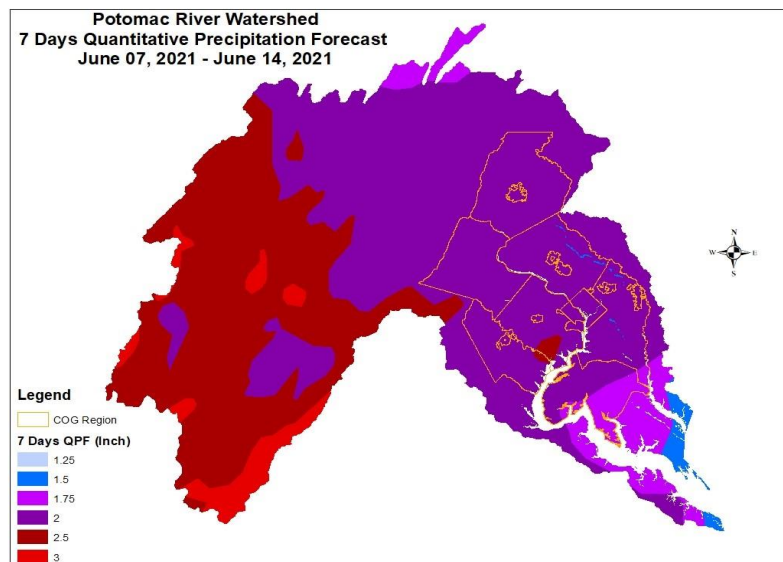
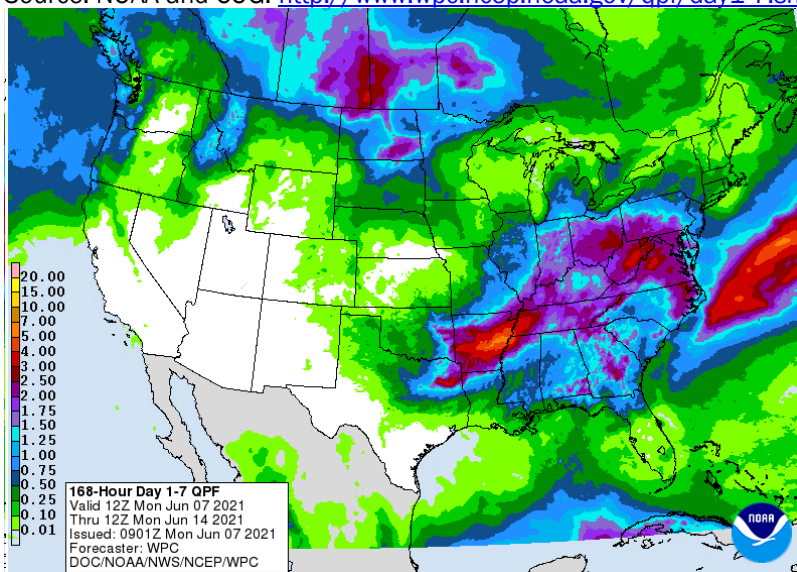
As of the June 2021 report, there is an above normal probability of releases from the Washington metropolitan area's back-up water supply reservoirs for the 2021 summer and fall seasons. Generally, the use of Jennings Randolph and Little Seneca reservoirs is triggered by low flows brought about by a combination of low precipitation and low groundwater levels. There is a 9 to 18 percent conditional probability that natural Potomac flow will drop below 600 to 700 million gallons per day (MGD) at Little Falls through December 31 of this year. Source: ICPRB

<https://www.potomacriver.org/focus-areas/water-resources-and-drinking-water/cooperative-water-supply-operations-on-the-potomac/drought-monitoring-and-operations/water-supply-outlook-status/>

## 7 DAY PRECIPITATION FORECASTS

The 7 Day quantitative precipitation forecast calls for roughly 2.00 inches of rain.

Source: NOAA and COG: <http://www.wpc.ncep.noaa.gov/qpf/day1-7.shtml>



For additional information please visit COG's Water Supply and Drought website:

<https://www.mwcog.org/drought>