

MAPPING CHANGES IN THE ROUND 9.2 FORECAST

Comparison with Round 9.1a

John Kent
Regional Planner
Department of Community Planning and Services

Cooperative Forecasting and Data Subcommittee
July 27, 2021

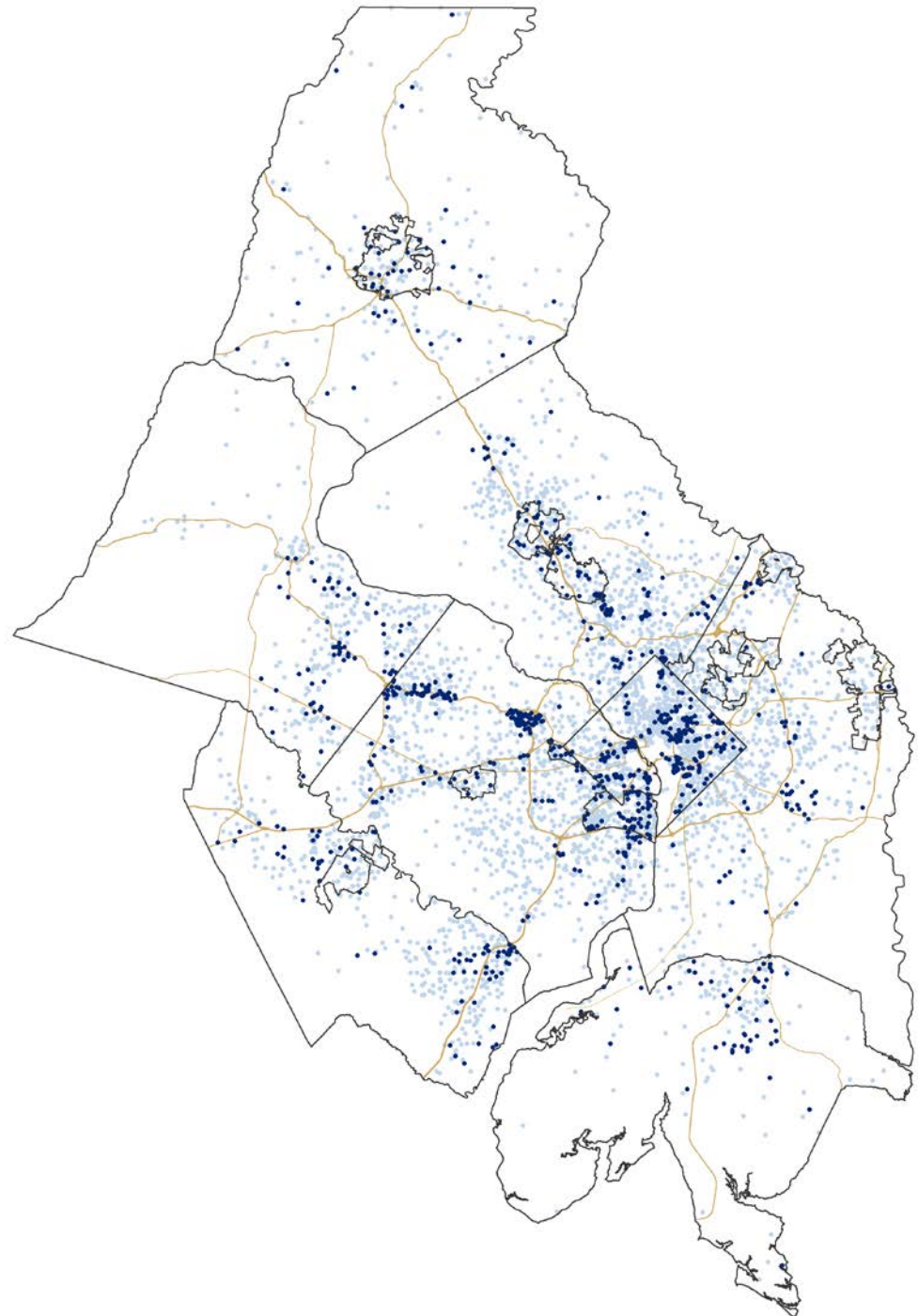
Round 9.2 Participation

- Ten COG jurisdictions updated their forecasts for Round 9.2:
 - Frederick County
 - City of Frederick
 - Montgomery County
 - Arlington County
 - City of Alexandria
 - Fairfax County
 - City of Falls Church
 - Loudoun County
 - Prince William County
 - City of Manassas



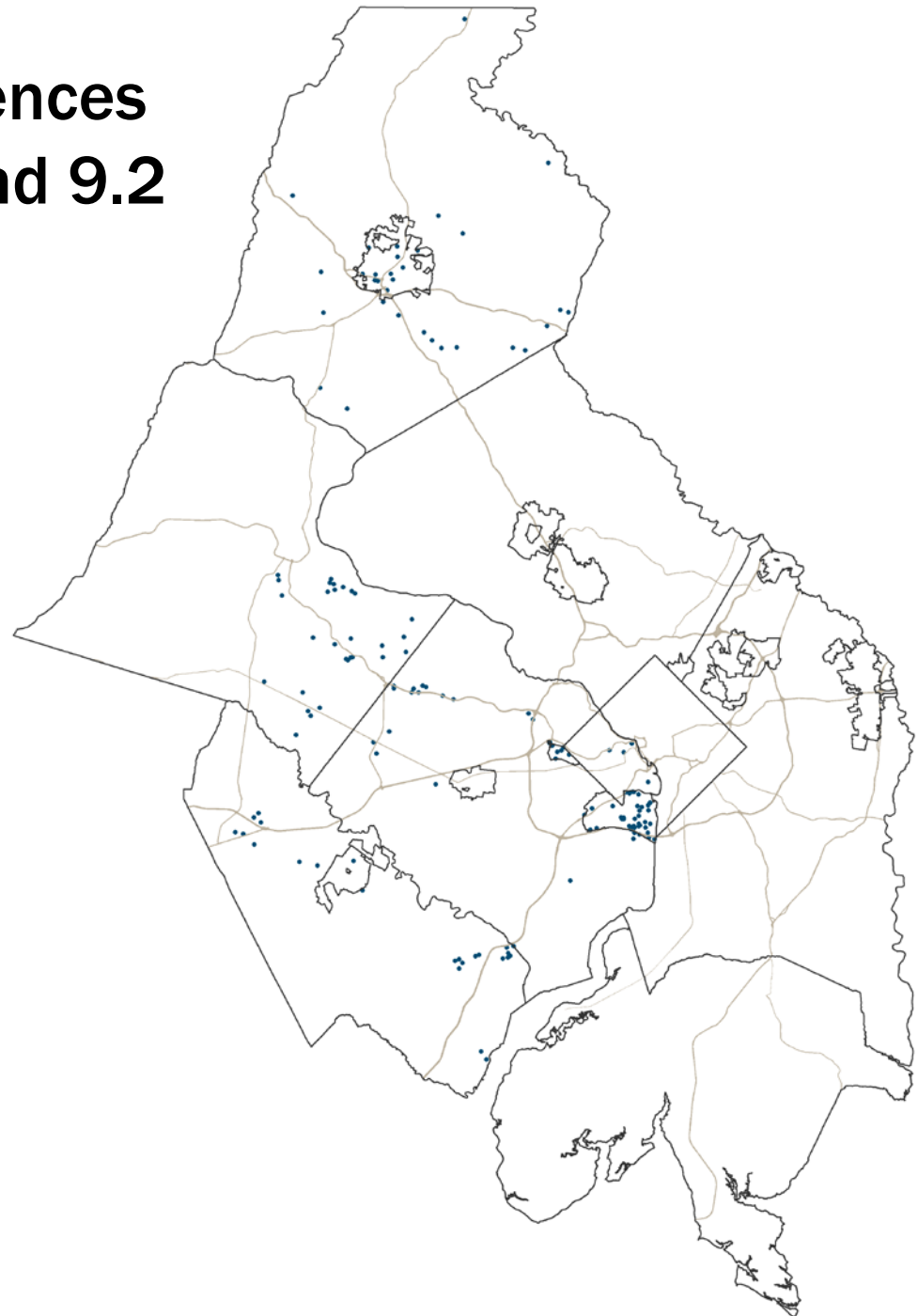
Household Growth

- Households Existing in 2020 from Round 9.2 are shown in light blue.
- Households added between 2020 and 2045 are shown in dark blue.
- One dot = 500 Households
- COG Jurisdiction Households in Round 9.2 grew by 25%, from 2.13 million in 2020 to 2.67 million in 2045.



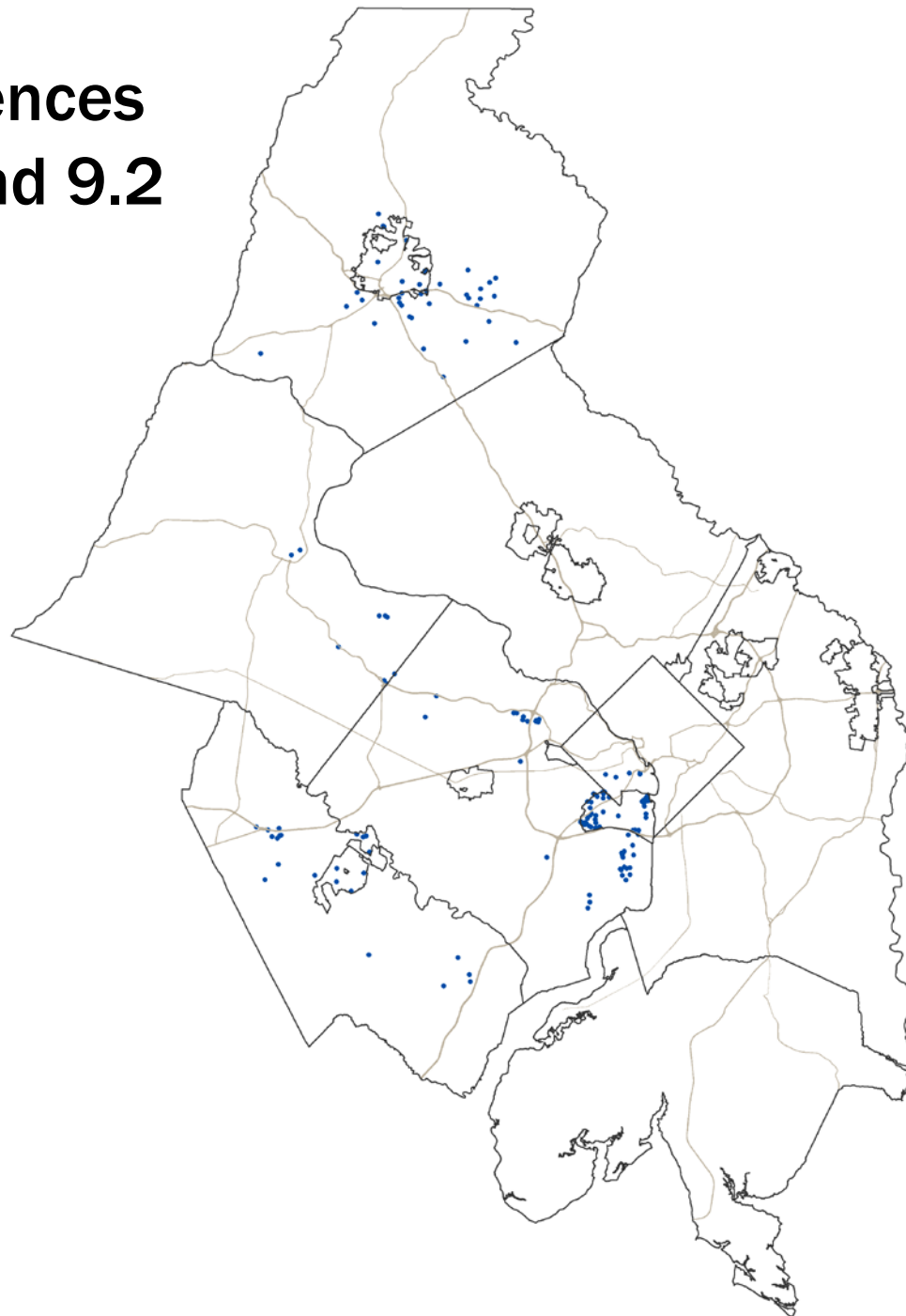
2045 Household Differences in Round 9.1a and Round 9.2

- **Increases** in 2045 Households in Round 9.2, compared with Round 9.1a, are represented by blue dots.
- One dot = 500 Households
- Round 9.2 has 5,544 more Households in COG jurisdictions than Round 9.1a



2045 Household Differences in Round 9.1a and Round 9.2

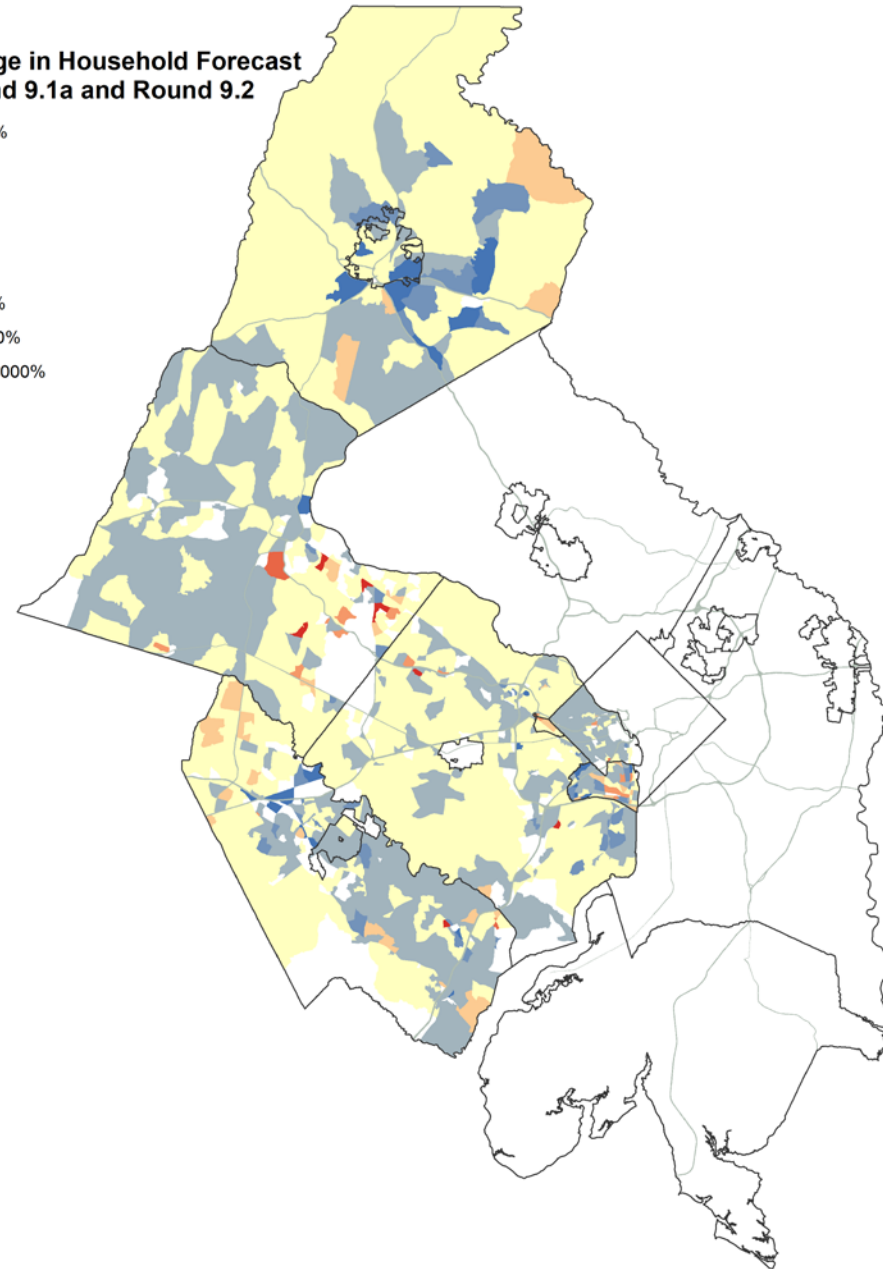
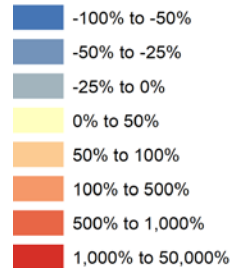
- **Decreases** in 2045 Households in Round 9.2, compared with Round 9.1a, are represented by blue dots.
- One dot = 500 Households
- Round 9.2 has 5,544 more Households in COG jurisdictions than Round 9.1a



Household Differences

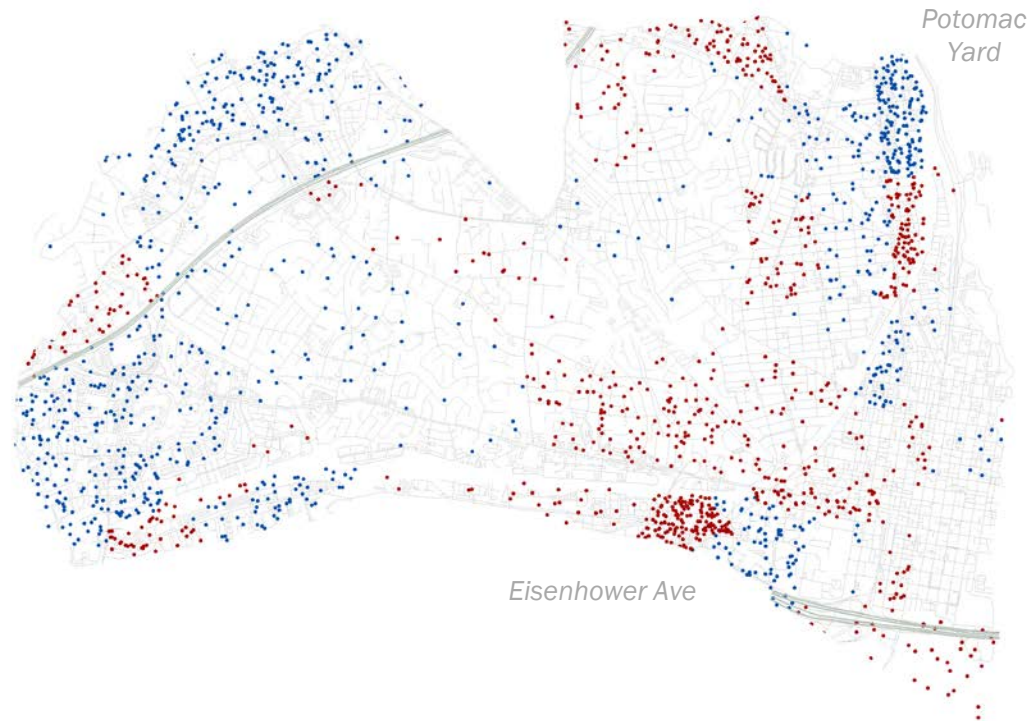
- Reddish areas show TAZs with more 2045 Households in Round 9.2 than Round 9.1 a
- Blueish areas show TAZs with fewer 2045 Households in Round 9.2 than Round 9.1a
- White areas have no change

Percent Change in Household Forecast between Round 9.1a and Round 9.2



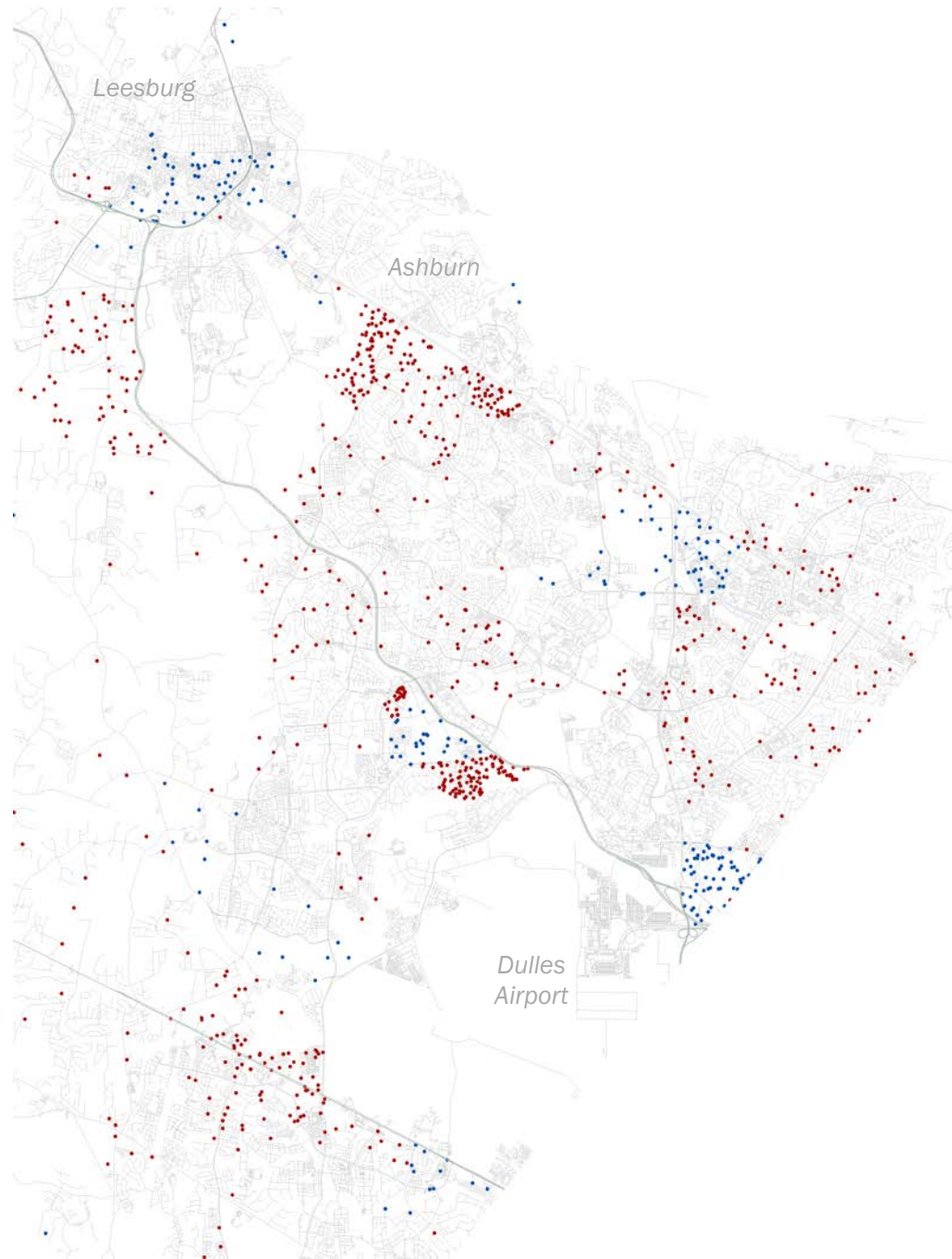
Alexandria 2045 Household Differences Between Round 9.1a and Round 9.2

- Red dots represent more 2045 Households in Round 9.2 than Round 9.1a
- Blue dots represent fewer 2045 Households in Round 9.2 than Round 9.1a
- One dot = 25 Households



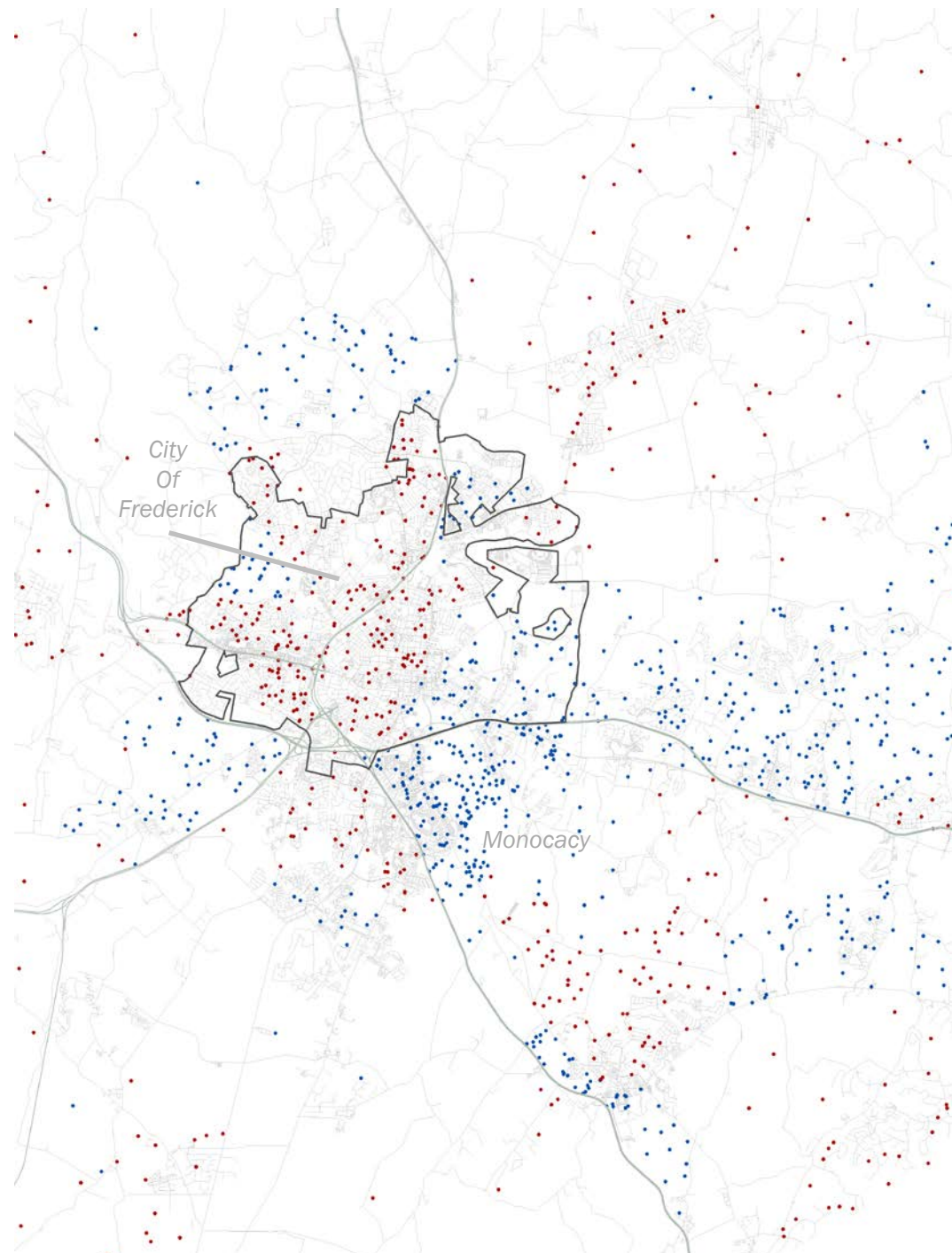
Southeastern Loudoun 2045 Household Differences Between Round 9.1a and Round 9.2

- Red dots represent more 2045 Households in Round 9.2 than Round 9.1a
- Blue dots represent fewer 2045 Households in Round 9.2 than Round 9.1a
- One dot = 25 Households



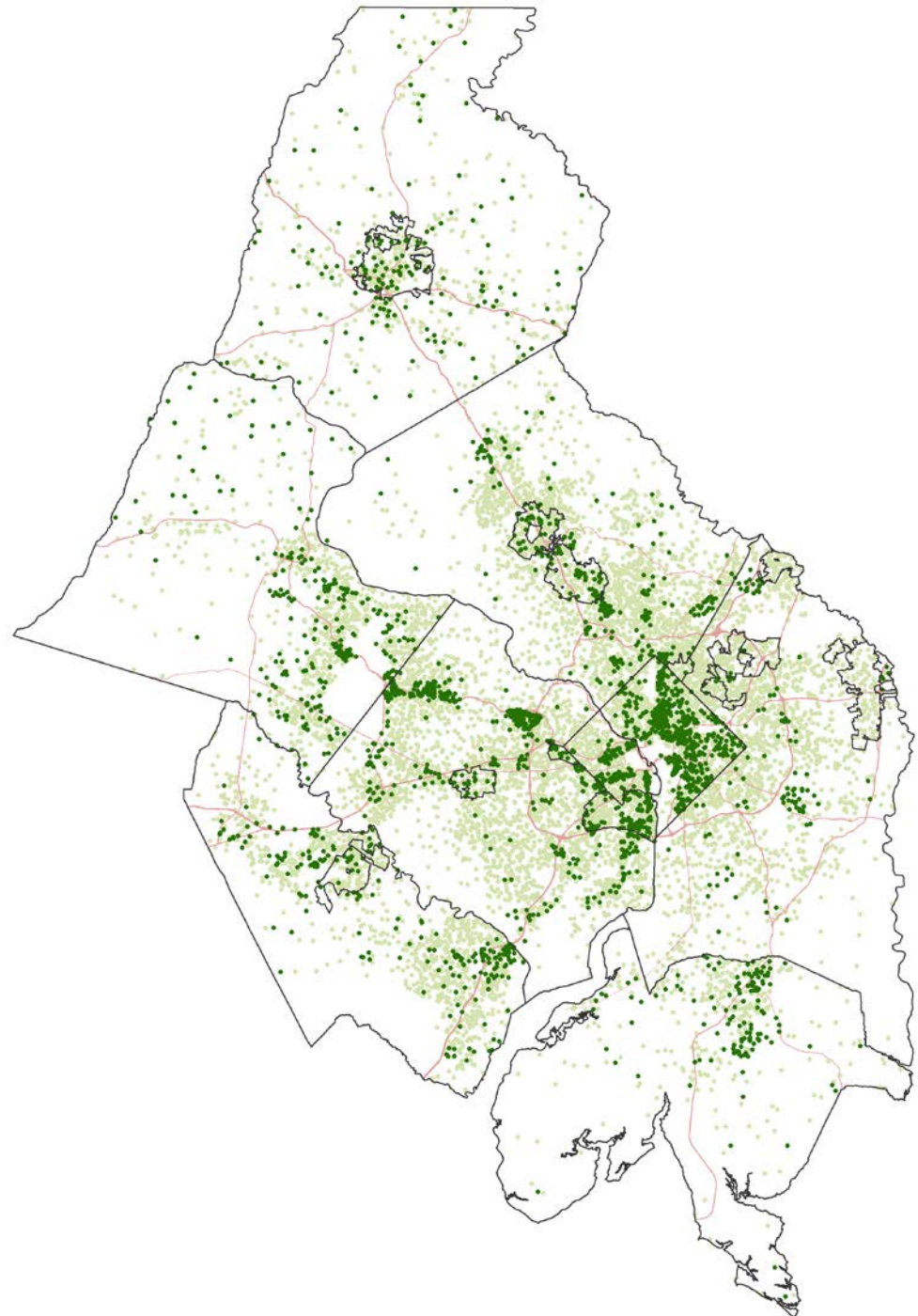
Central Frederick 2045 Household Differences Between Round 9.1a and Round 9.2

- Red dots represent more 2045 Households in Round 9.2 than Round 9.1a
- Blue dots represent fewer 2045 Households in Round 9.2 than Round 9.1a
- One dot = 25 Households



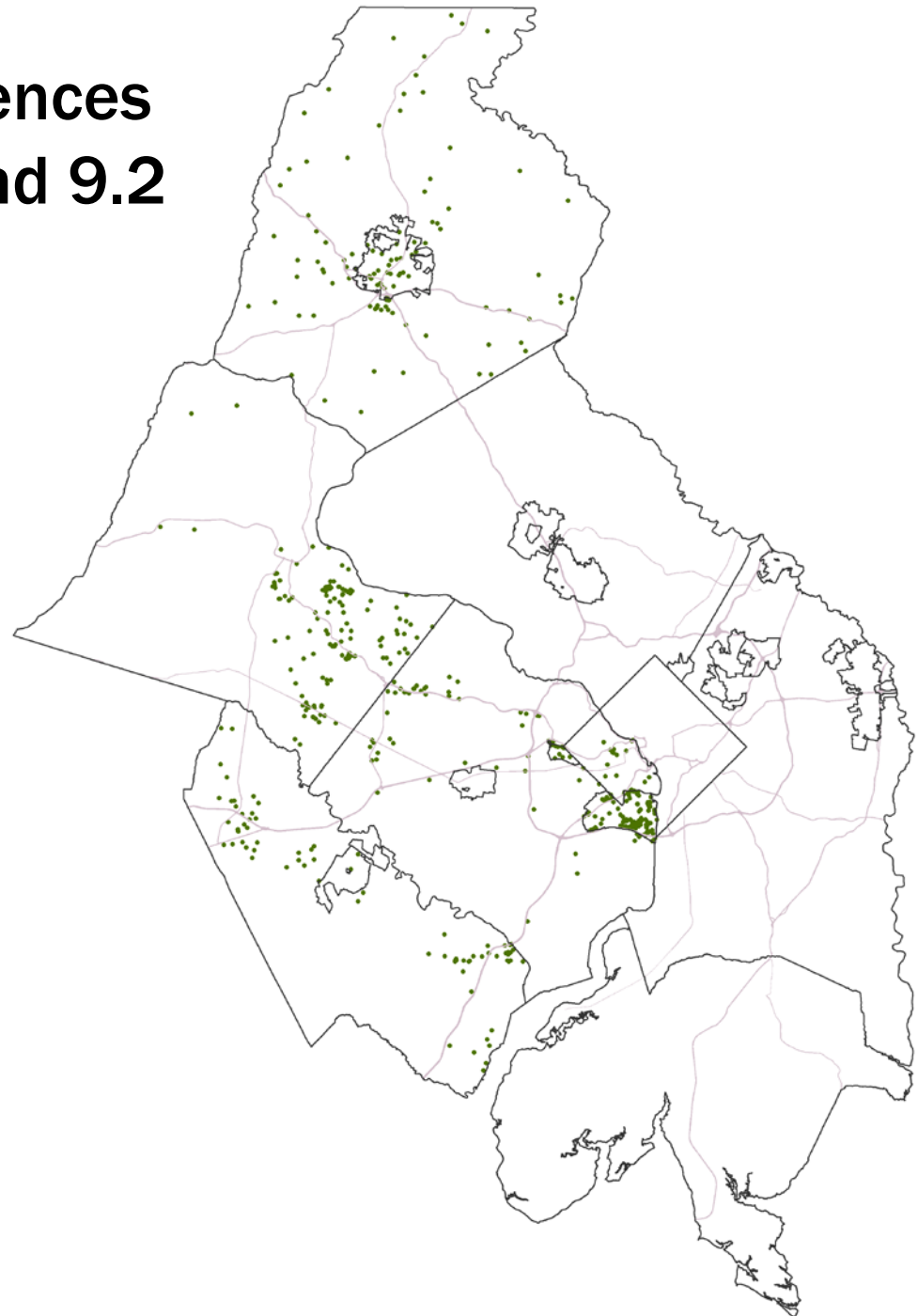
Population Growth

- 2020 Population from Round 9.2 is shown in light green.
- Population increases between 2020 and 2045 are shown in dark green.
- One dot = 500 People
- COG Jurisdiction
Population in Round 9.2 grew by 23%, from 5.70 million in 2020 to 6.98 million in 2045.



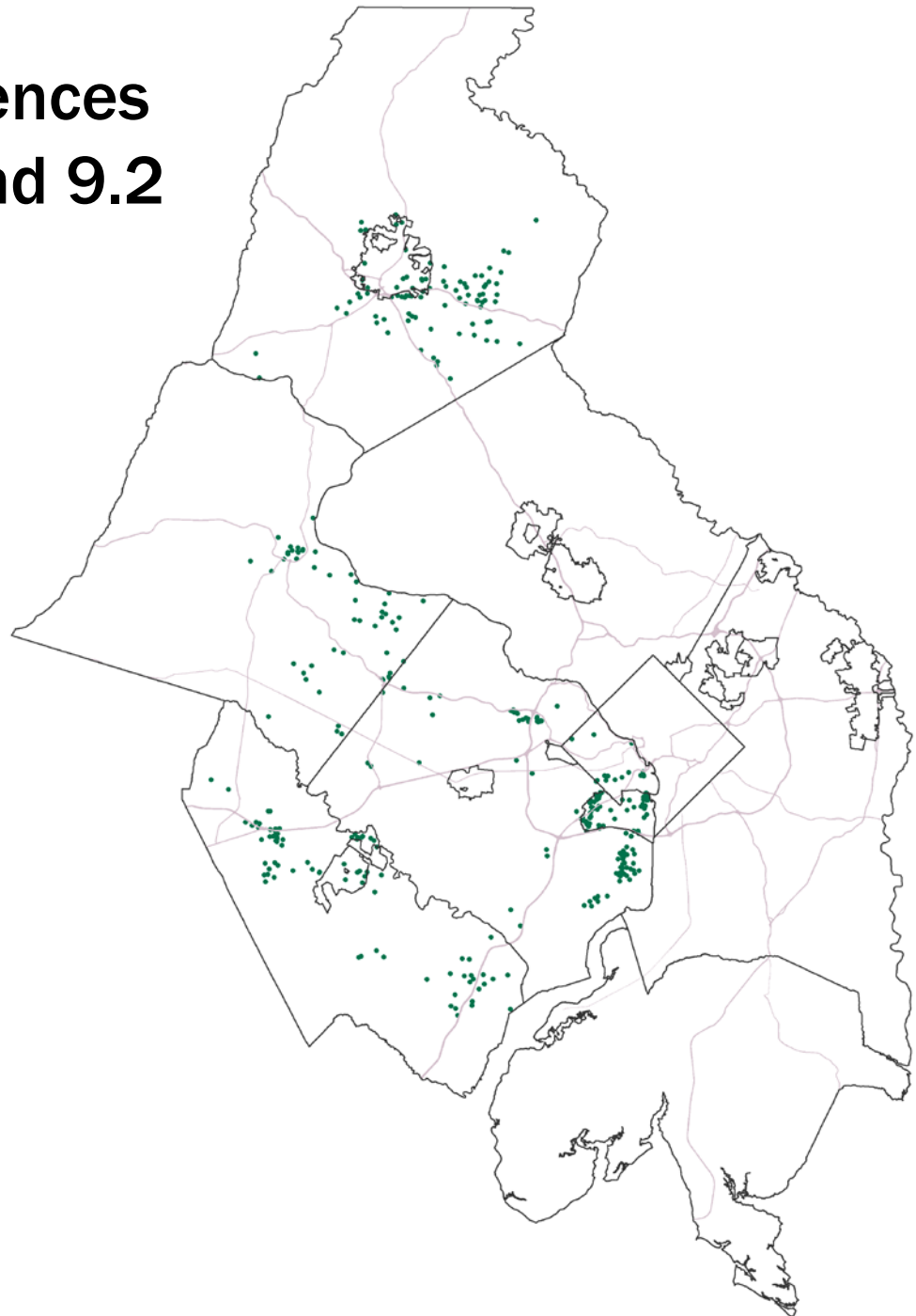
2045 Population Differences in Round 9.1a and Round 9.2

- **Increases** in 2045 Population in Round 9.2 compared with Round 9.1a, are represented by green dots.
- One dot = 500 People
- Round 9.2 has 57,848 more people in COG jurisdictions than Round 9.1a.



2045 Population Differences in Round 9.1a and Round 9.2

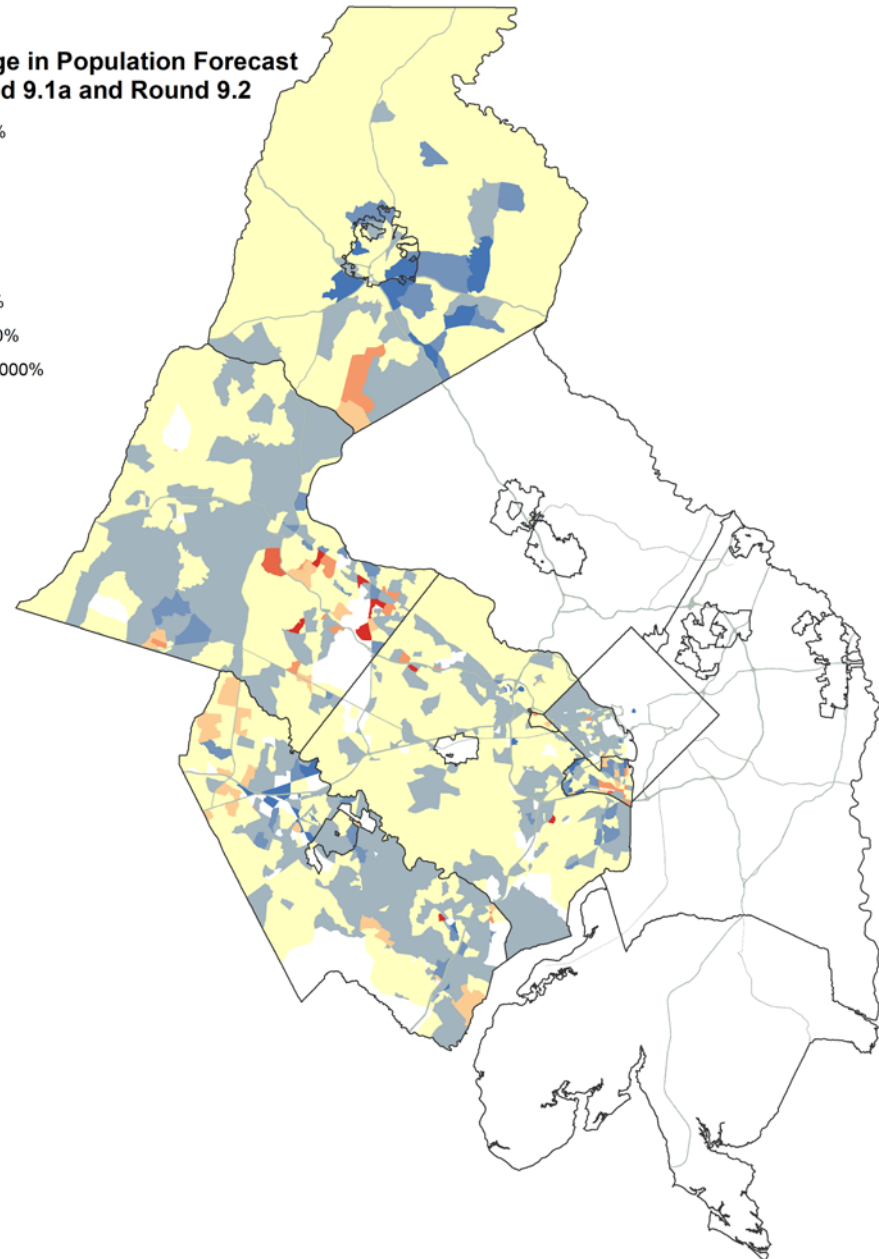
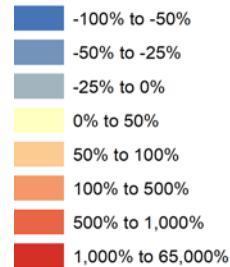
- **Decreases** in 2045 Population in Round 9.2 compared with Round 9.1a, are represented by green dots.
- One dot = 500 People
- Round 9.2 has 57,848 more people in COG jurisdictions than Round 9.1a.



Population Differences

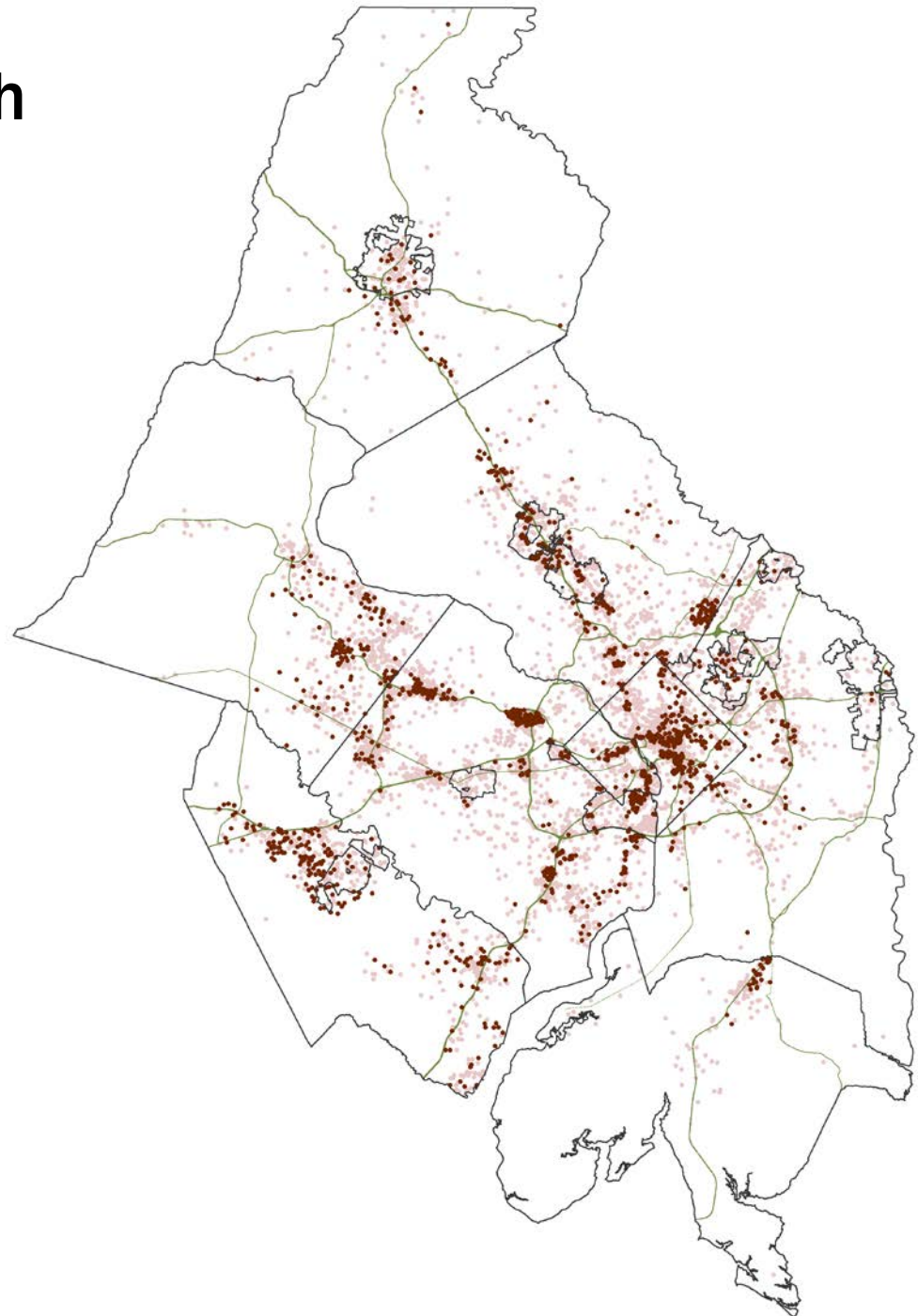
- Reddish areas show TAZs with higher 2045 Population in Round 9.2 than Round 9.1 a
- Blueish areas show TAZs with lower 2045 Population in Round 9.2 than Round 9.1a
- White areas have no change

Percent Change in Population Forecast between Round 9.1a and Round 9.2



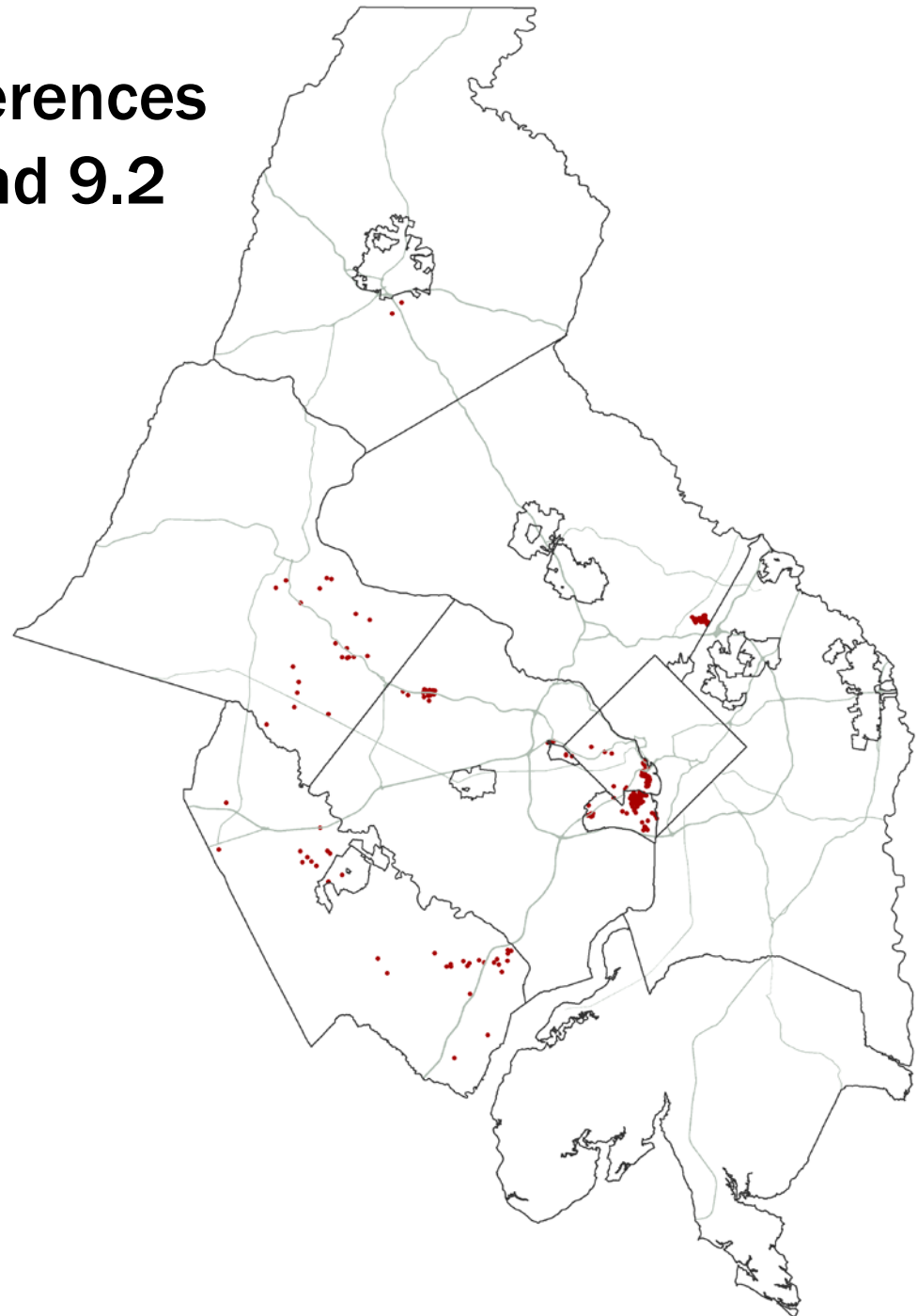
Employment Growth

- Jobs Existing in 2020 from Round 9.2 are shown in pink.
- Employment added between 2020 and 2045 are shown in dark red.
- One dot = 500 Jobs
- COG Jurisdiction
Employment in Round 9.2 grew by 26%, from 3.36 million in 2020 to 4.24 million in 2045.



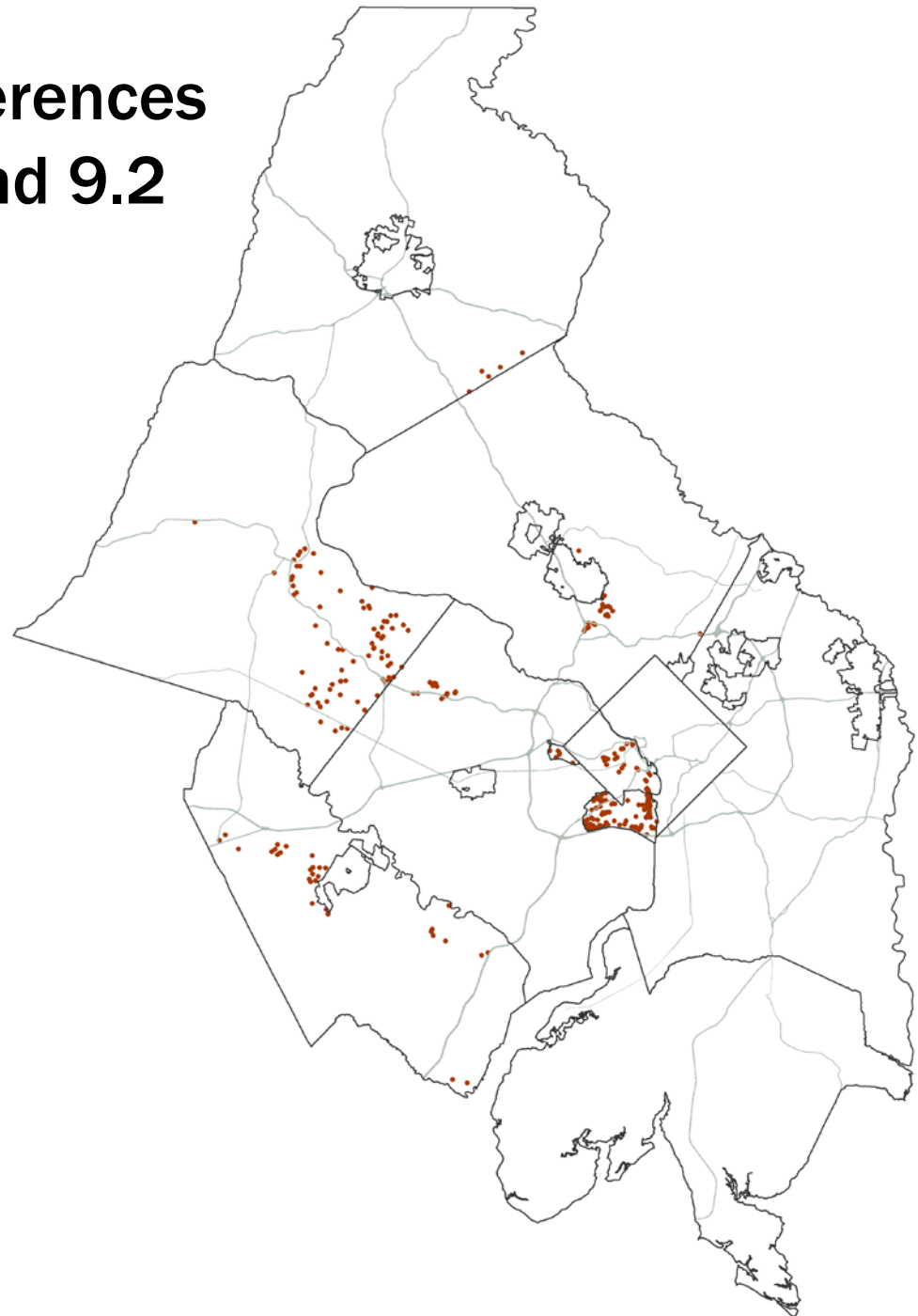
2045 Employment Differences in Round 9.1a and Round 9.2

- **Increases** in 2045 Employment in Round 9.2, compared with Round 9.1a, are represented by red dots.
- One dot = 500 Jobs
- Round 9.2 has 29,323 fewer Jobs in COG jurisdictions than Round 9.1a



2045 Employment Differences in Round 9.1a and Round 9.2

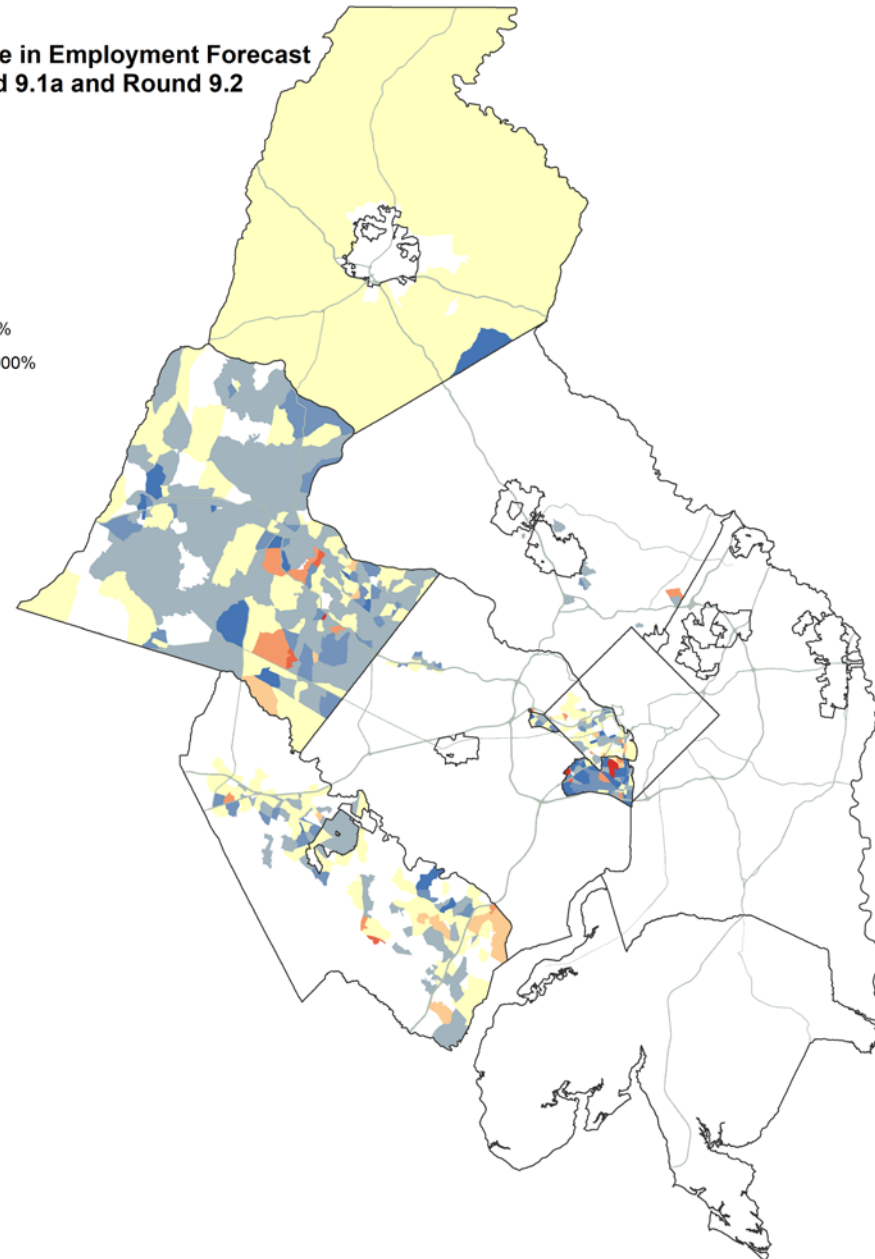
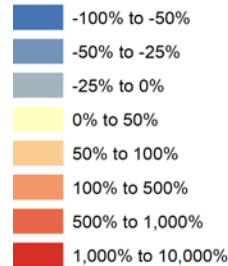
- **Decreases** in 2045 Households in Round 9.2, compared with Round 9.1a, are represented by red dots.
- One dot = 500 Jobs
- Round 9.2 has 29,323 fewer Jobs in COG jurisdictions than Round 9.1a



Employment Differences

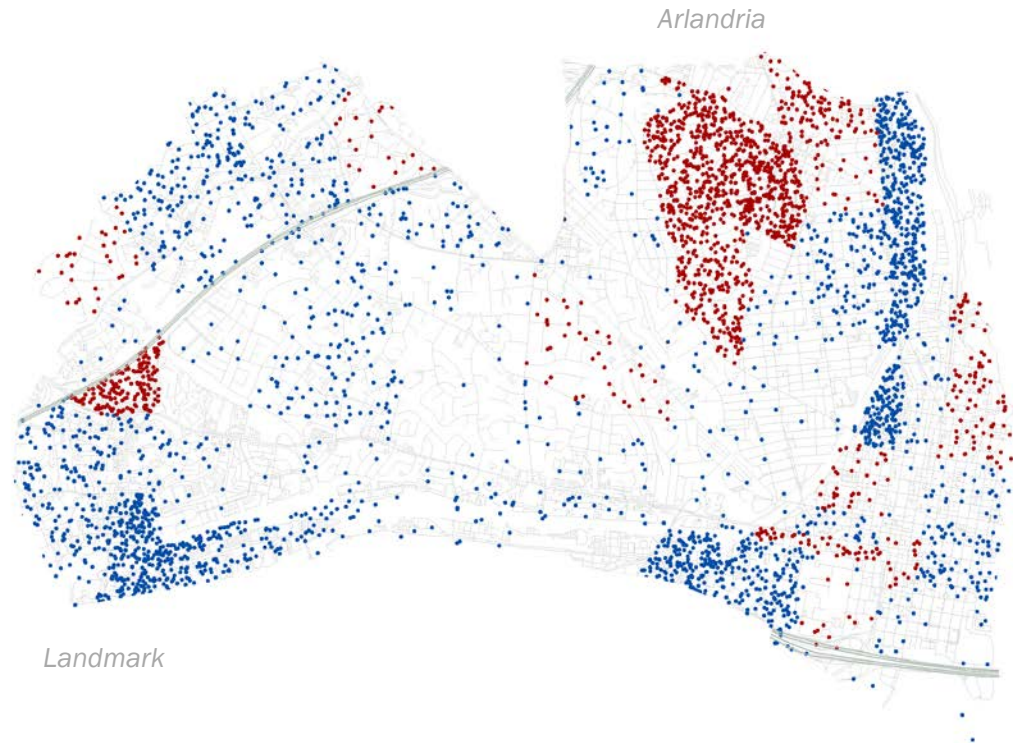
- Reddish areas show TAZs with more 2045 Employment in Round 9.2 than Round 9.1 a
- Blueish areas show TAZs with lower 2045 Employment in Round 9.2 than Round 9.1a
- White areas have no change

Percent Change in Employment Forecast between Round 9.1a and Round 9.2



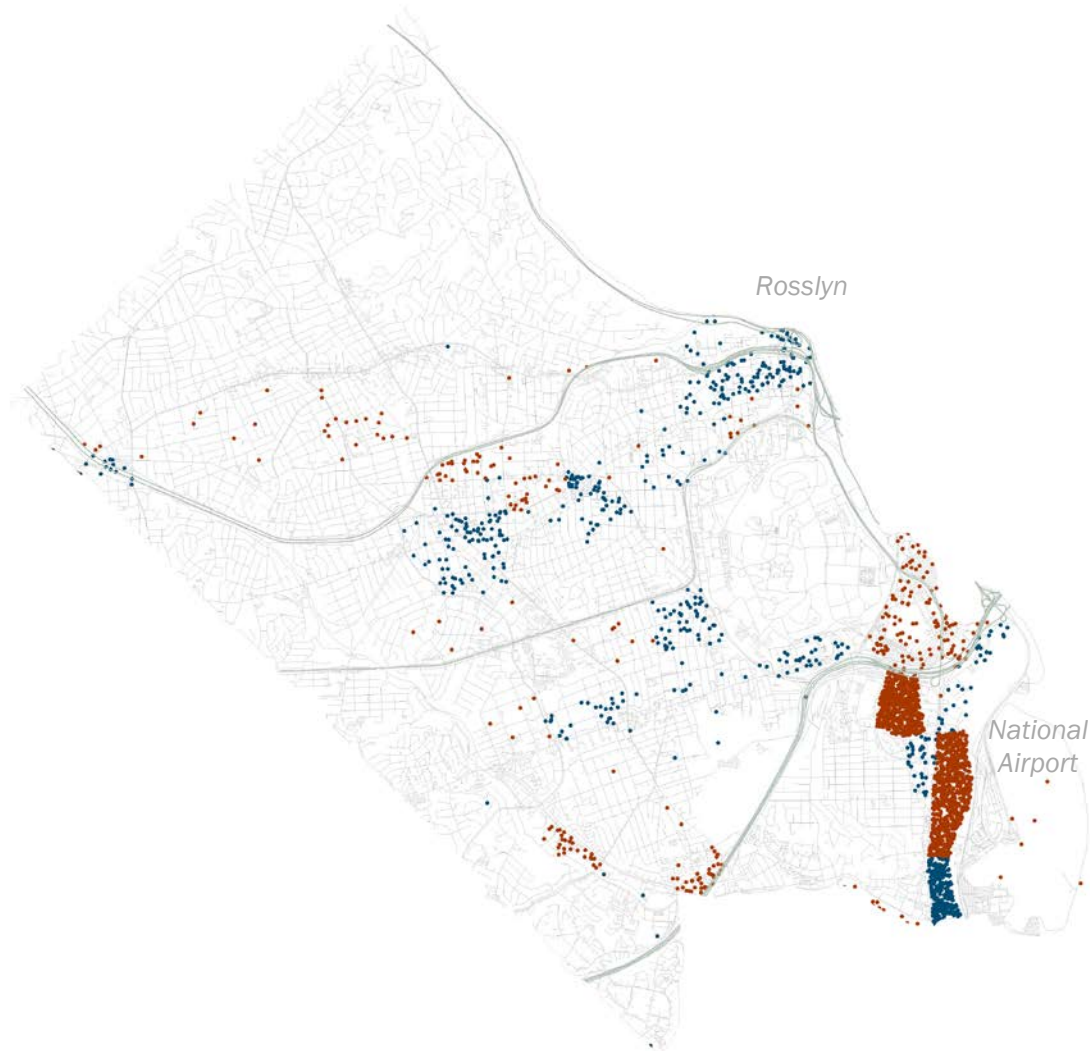
Alexandria 2045 Employment Differences Between Round 9.1a and Round 9.2

- Red dots represent higher 2045 Employment in Round 9.2 than Round 9.1a
- Blue dots represent lower 2045 Employment in Round 9.2 than Round 9.1a
- One dot = 25 Jobs



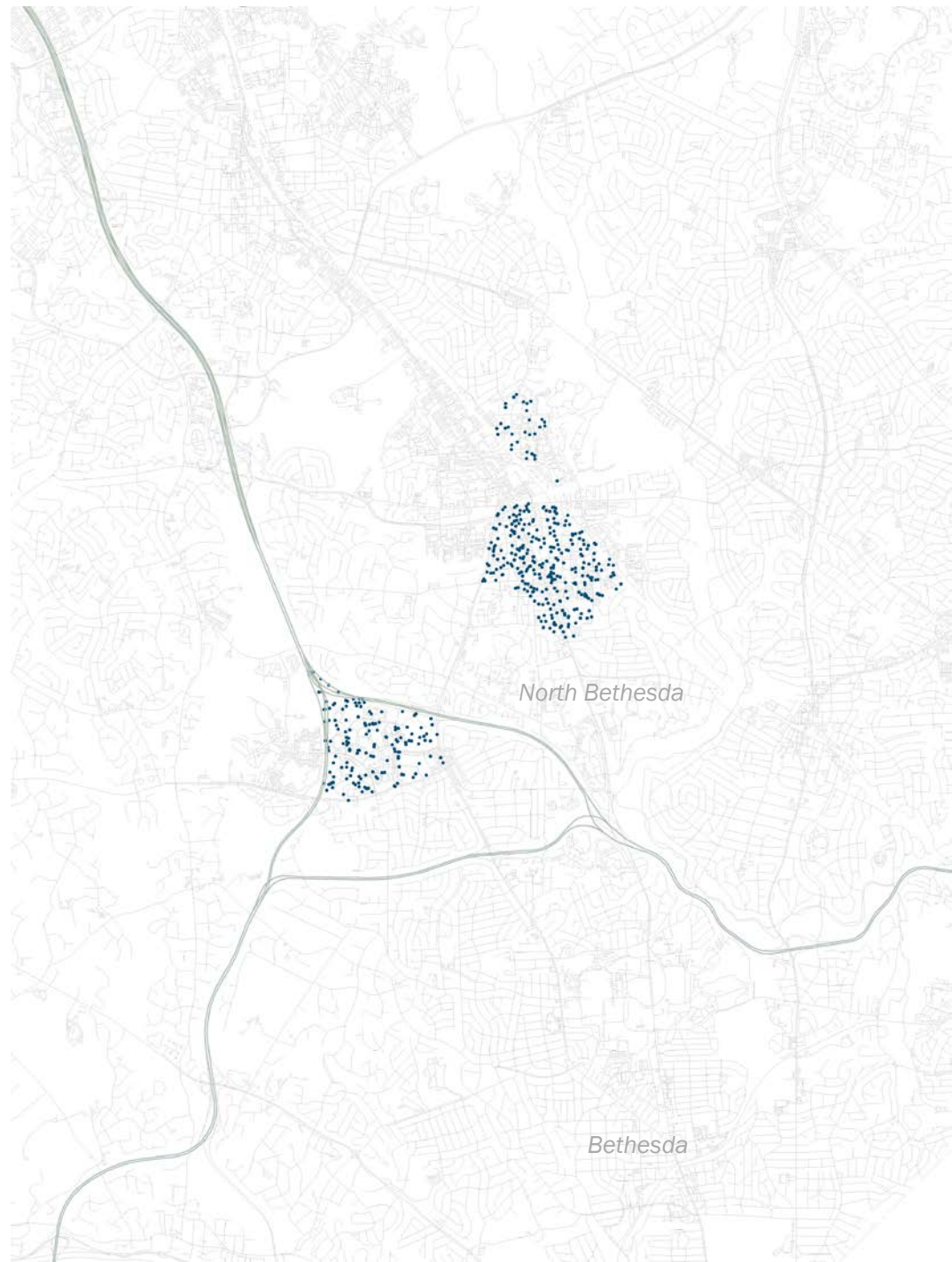
Arlington 2045 Employment Differences Between Round 9.1a and Round 9.2

- Red dots represent higher 2045 Employment in Round 9.2 than Round 9.1a
- Blue dots represent lower 2045 Employment in Round 9.2 than Round 9.1a
- One dot = 25 Jobs



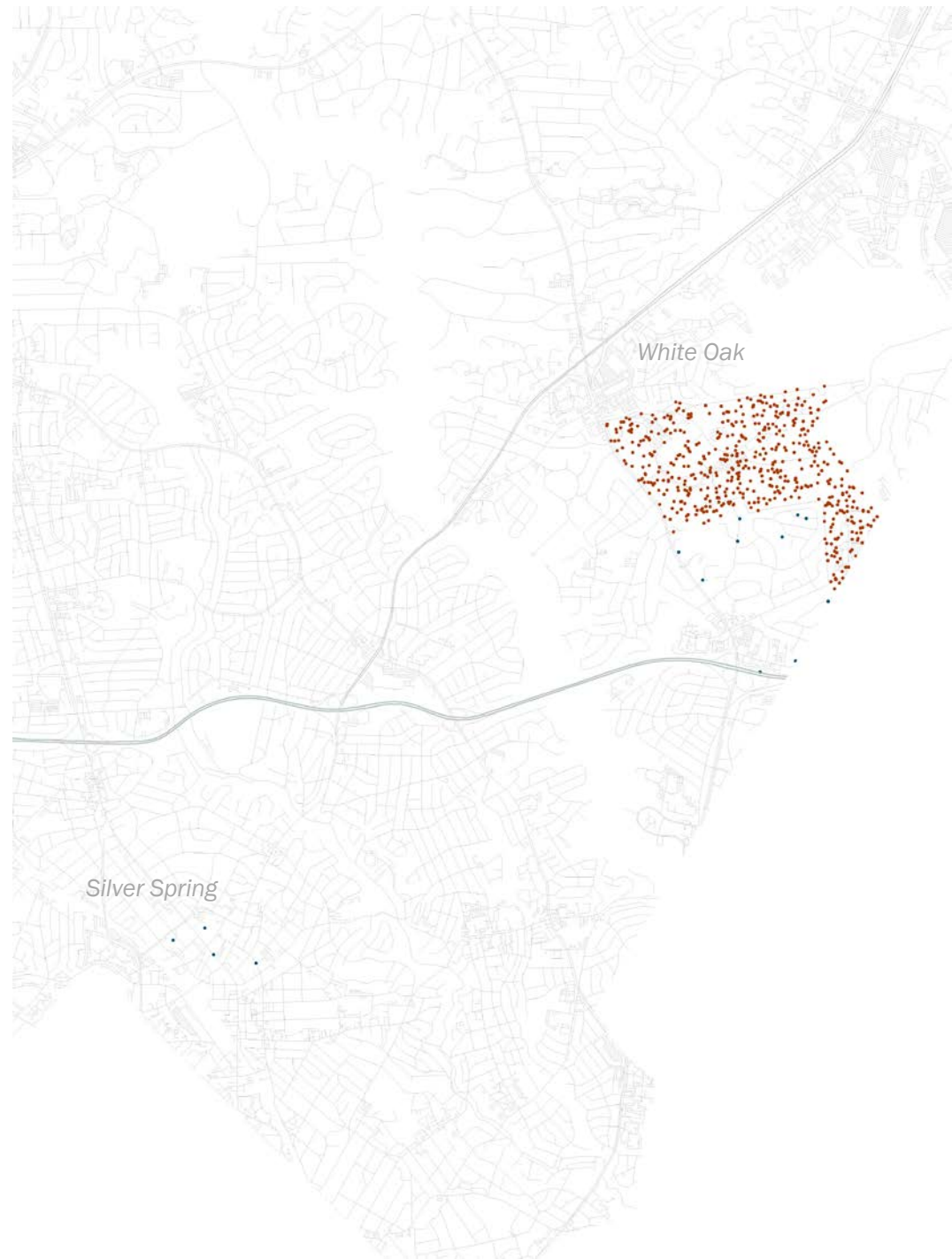
Bethesda Area 2045 Employment Differences Between Round 9.1a and Round 9.2

- Red dots represent higher 2045 Employment in Round 9.2 than Round 9.1a
- Blue dots represent lower 2045 Employment in Round 9.2 than Round 9.1a
- One dot = 25 Jobs



White Oak Area 2045 Employment Differences Between Round 9.1a and Round 9.2

- Red dots represent higher 2045 Employment in Round 9.2 than Round 9.1a
- Blue dots represent lower 2045 Employment in Round 9.2 than Round 9.1a
- One dot = 25 Jobs



John Kent

Regional Planner
jkent@mwkog.org

mwkog.org

777 North Capitol Street NE, Suite 300
Washington, DC 20002



Metropolitan Washington
Council of Governments