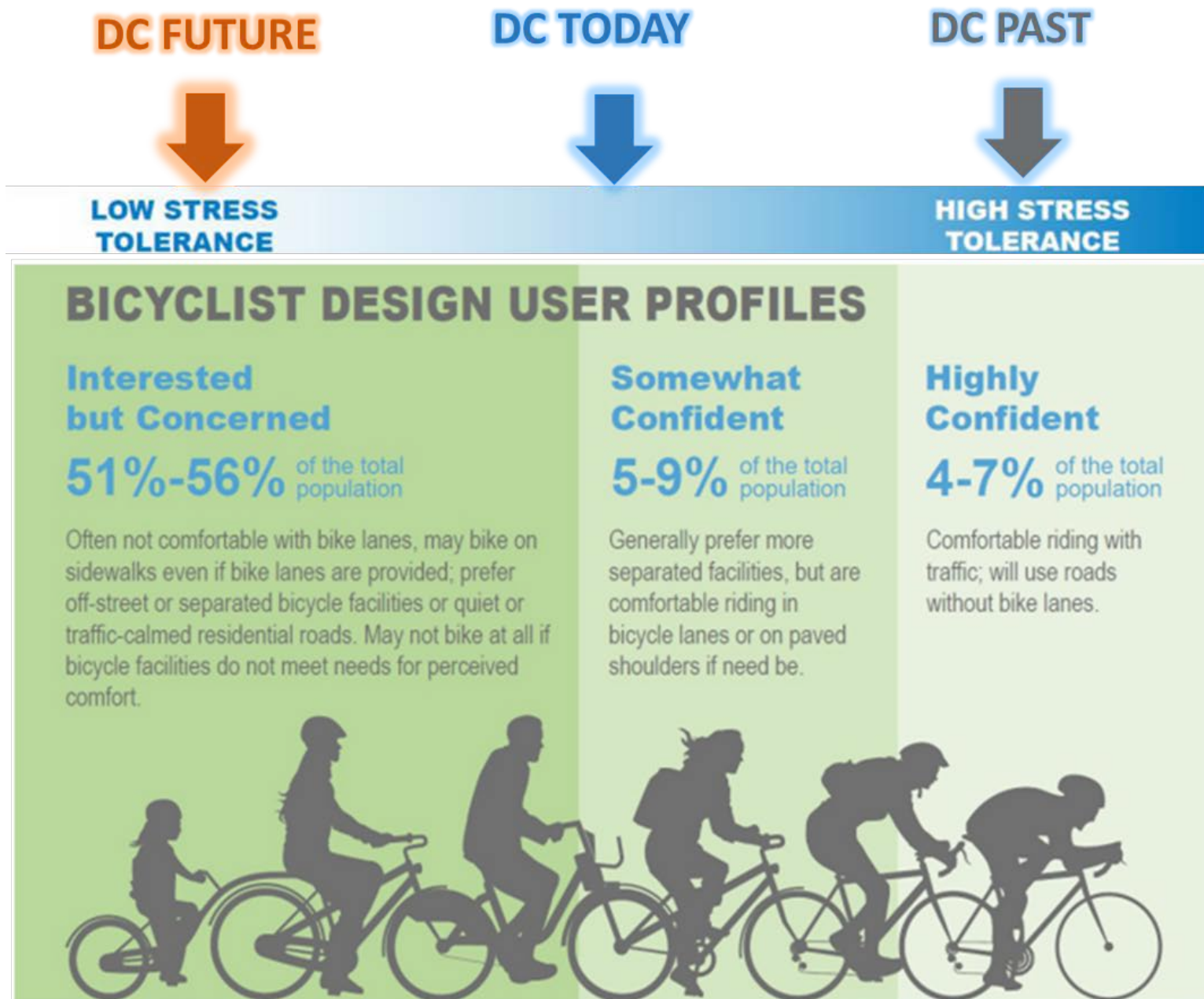


FY21 Bicycle Lanes and Trails Year-End Report



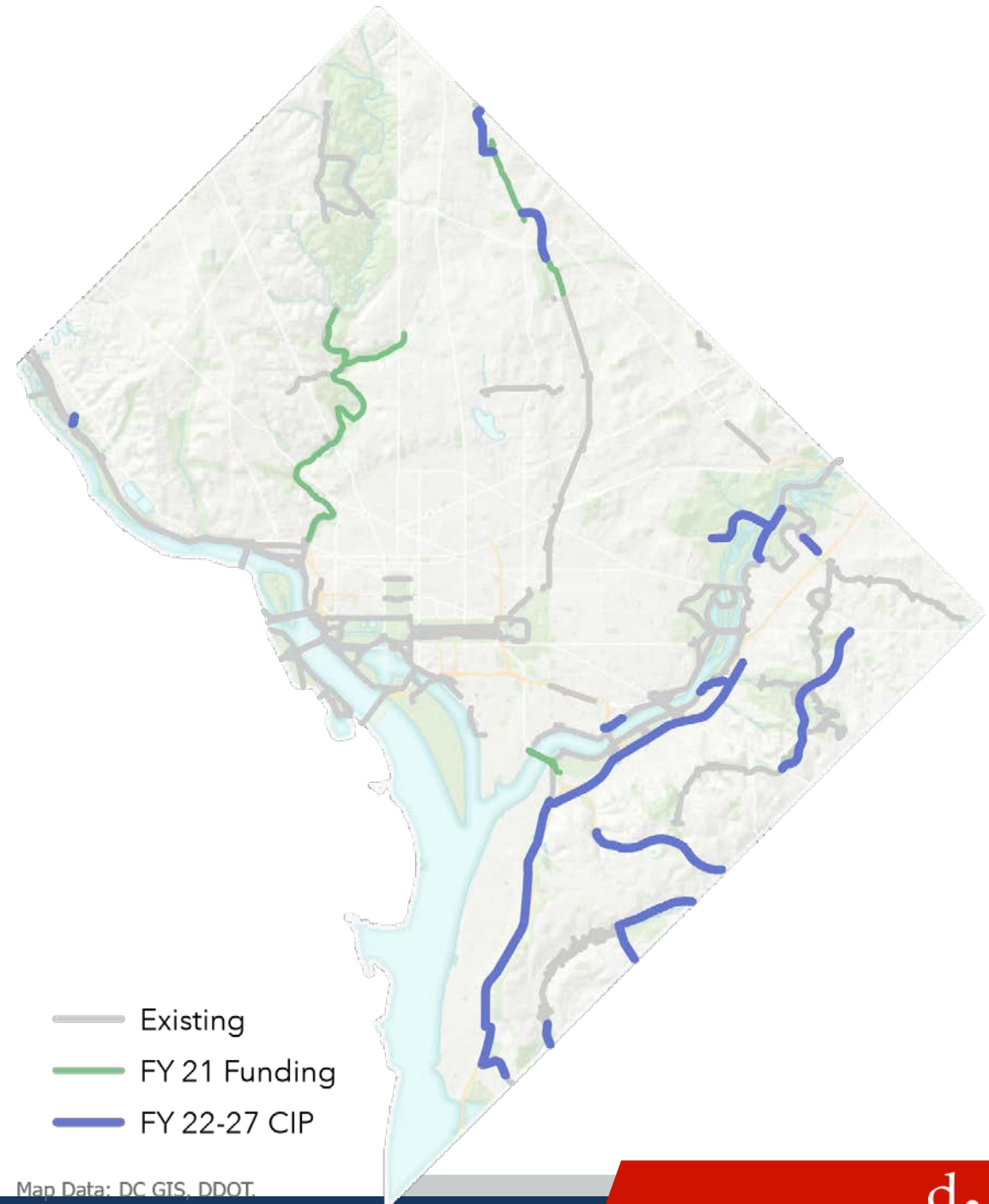
Why DC is Focused on Protected Lanes

- Increased goals for bicycle modeshare (15%-20% of all trips)
- The physical environment must be safer and lower stress than it is today in order to attract and retain "interested but concerned" riders
- Significantly safer, reduce the frequency of interactions between cyclists and drivers
- Plan and build a connected network of PBLs which is usable for riders ages 8 – 80 years old



Trails Program

- Capital Project Delivery
 - **PSD** leads prioritization, conceptual development, public outreach, and environmental compliance
 - **IPMD** leads design and construction
- Extensive coordination with NPS, WMATA, CSX
- Currently 62 miles of trails in the District
- Mayor's FY 22-26 budget calls for an additional 17.4 miles of trails



Trail Construction Projects Active in FY 2021

Project	Ward	Construction Timeline (Start/End)	Mileage
Met Branch Trail: Brookland to Fort Totten	5	2019 - 2022	0.5
Rock Creek Park Trail and Pedestrian Bridge	1,2,3,4	2021-2023	3.7
Frederick Douglass Memorial Bridge Project	6,8	2021-2022	2.7
Malcolm X/I-295 Trail	8	2020-2022	1.2
Rock Creek Trail/Kennedy Center Access (TR Bridge Tunnel)	2	2021 - 2022	0.6
Met Branch Trail: Eastern Ave NW	4	2021	0.1
Total miles under construction in FY 2021			8.8
Total miles completed in FY 2021			0.1
Total miles expected complete in FY 2022			7.9

Trail Design Projects Active in FY 2021

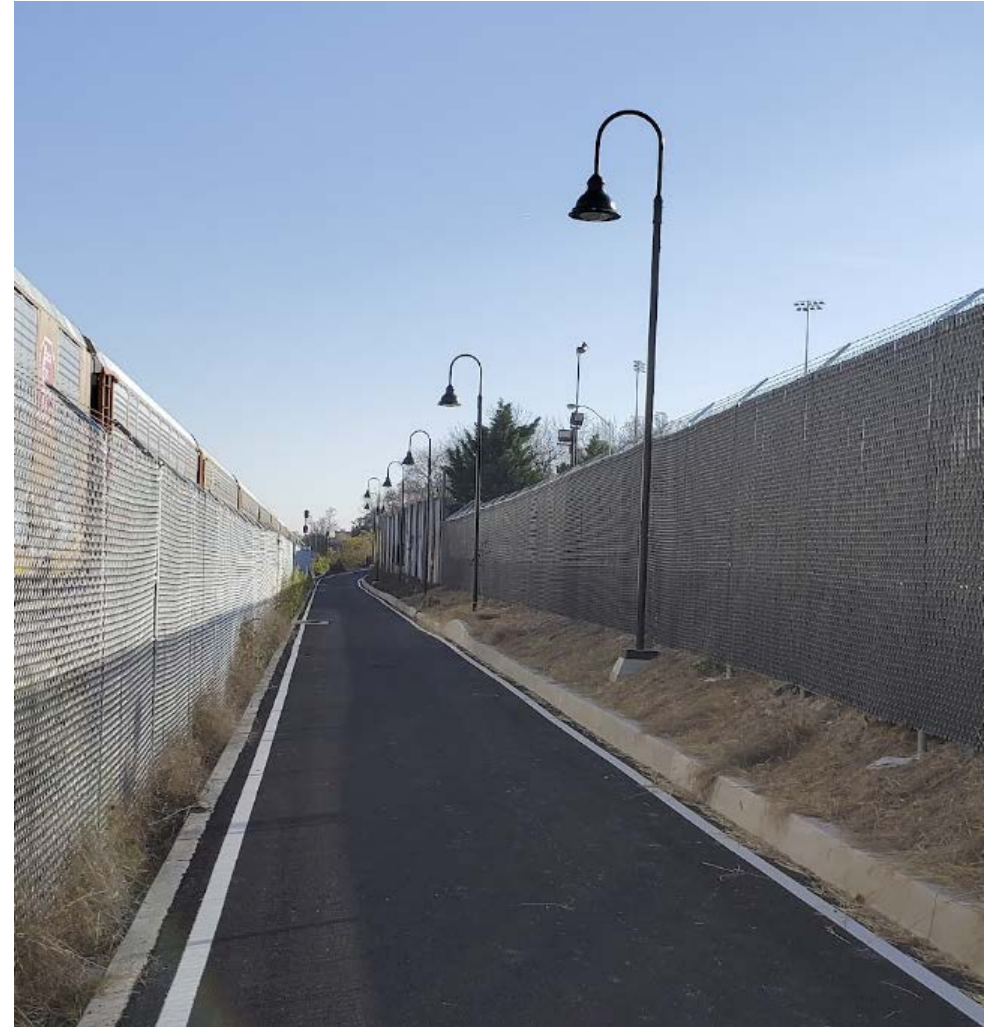
Project	Phase	Ward	Construction Timeline (Start/End)	Mileage
Met Branch Trail: Fort Totten to Takoma	Final Design	4	2022-2023	1.9
South Capitol Street Trail	Final Design	8	TBD	3.8
Aspen St NW Trail	Final Design	4	2022-2023	0.4
Arboretum Bridge and Trail	Final Design	5,7	2023-2024	0.5
Anacostia River Trail – Kenilworth South	Preliminary Design	7	2024	0.6
Met Branch Trail: Blair Rd to Piney Branch Rd	Preliminary Design	4	2023	0.5
New York Avenue Trail	Conceptual Engineering	5,6	2025-2026	2.1
Arizona Avenue to Capital Crescent Trail Connection	Conceptual Engineering	3	2025	0.1
Total miles of trail in design in FY 2021				9.9
Total miles of trail expected to move to construction in FY 2022				2.3

Met Branch Trail: Brookland to Fort Totten

Before:



After:



Met Branch Trail: Eastern Avenue

Before:



After:



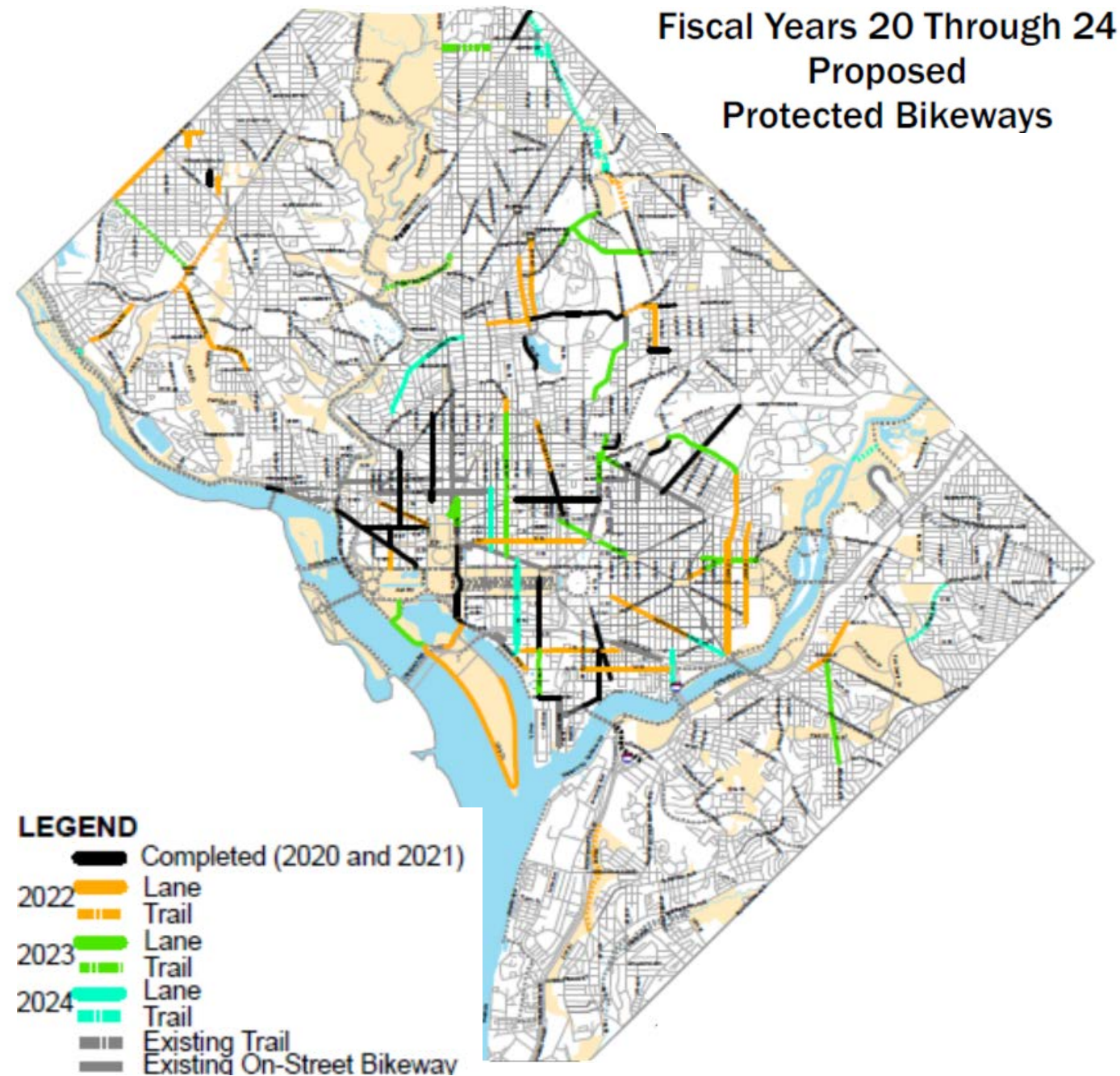


Malcolm X Trail construction progress

Rock Creek Trail construction progress

Bike Lane Program

- Capital Project Delivery
 - **PSD** leads prioritization, conceptual development, public outreach, and environmental compliance
 - **PSD and TESD** lead design and construction
- Currently 103 miles of lanes in the District – 79 unprotected and 24 protected
- Mayor’s FY 22-26 budget calls for an additional 30 miles of protected lanes



Protected Bike Lanes

Virginia Ave NW



Harry Thomas Way NE



15th St NW



Protected Bike Lanes + ADA

K St NW



West Virginia Ave NE



17th Street NW



Bike Lanes

Ridge Rd SE



Van Ness St NW



Advisory Bike Lanes

12th St SE



Water Street NW



Contraflow Bike Lanes

Kentucky Ave SE



Tennessee Ave NE



Odds & Ends

White House Sallyport Ramps



First St SE Street Furniture





District Department of Transportation

250 M St SE | Washington, DC 20003 | 202.673.6813