

Forecasted Population Growth on Sewer Systems in the Chesapeake Bay Watershed (2002 to 2030)



Chesapeake Bay Watershed

Counties

Chesapeake Bay

Phase 5 Watershed Modeling Segments

Population change on sewer systems

-18130 - -5000

-4999 - 0

1 - 5000

5001 - 10000

10001 - 15000

15001 - 20000

20001 - 164968

Probability of Urban Growth

4% - 10%

11% - 20%

21% - 30%

31% - 40%

41% - 50%

51% - 60%

61% - 70%

71% - 80%

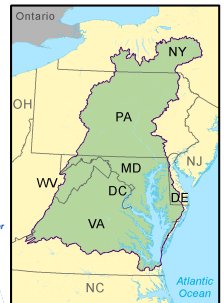
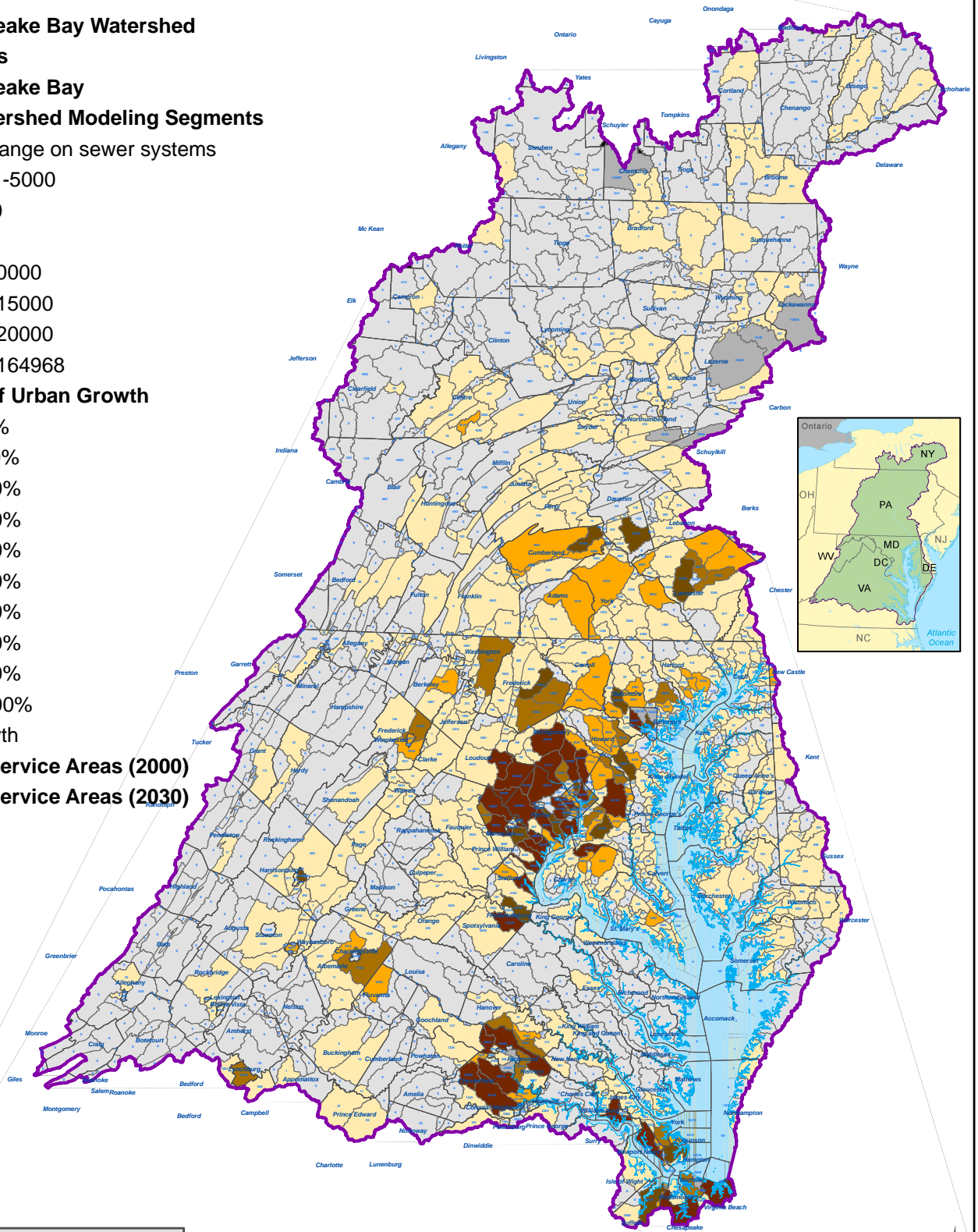
81% - 90%

91% - 100%

No Growth

Sewer Service Areas (2000)

Sewer Service Areas (2030)



Data Sources: Chesapeake Bay Program
For more information, visit www.chesapeakebay.net
Disclaimer: www.chesapeakebay.net/termsfuse.htm

