



Financially Constrained
**Long-Range
Transportation Plan**
For the National Capital Region

CLRPP 2015

COMMENT ON PROPOSED ADDITIONS AND CHANGES

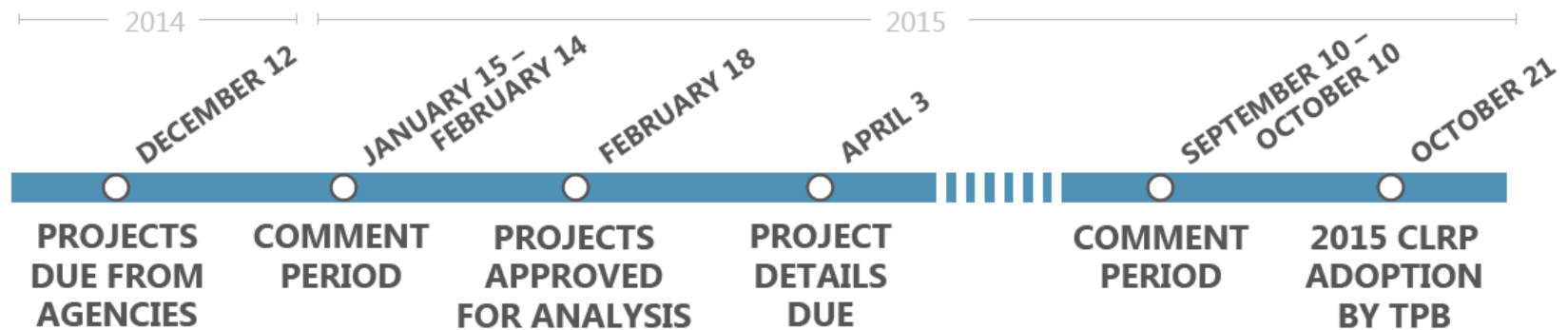
Comment on Additions and Changes to Projects
Proposed for Inclusion in the 2015 CLRPP Update

January 15, 2015

The Annual CLRP Update

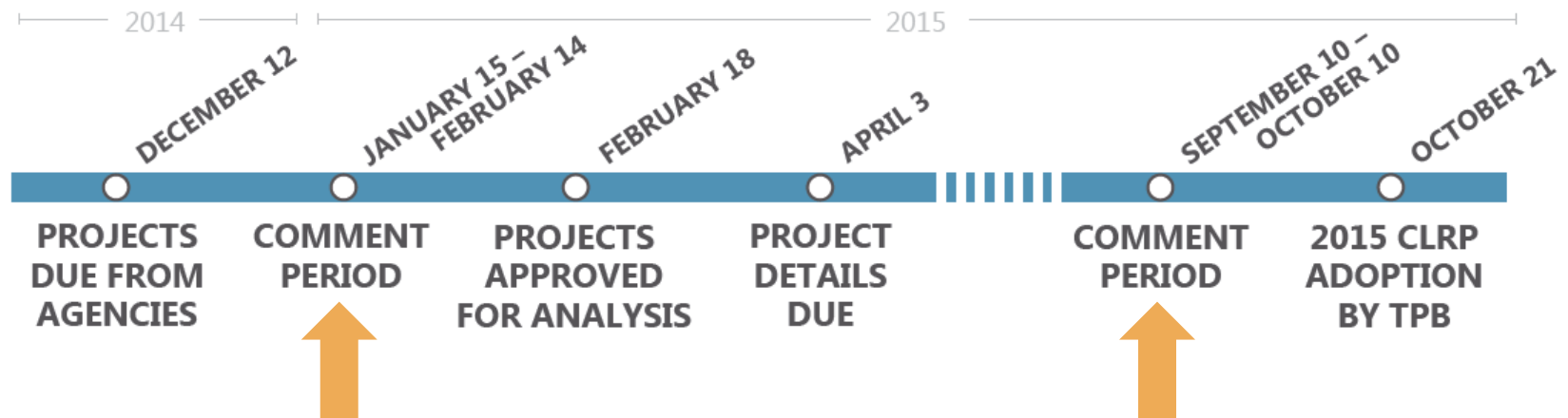
- Add new projects to the plan or make changes to projects already in the plan
- Perform Air Quality Conformity Analysis and Performance Analysis prior to adoption by TPB

SCHEDULE FOR DEVELOPMENT & ADOPTION OF THE 2015 CLRP UPDATE



Public Involvement

- Additions and changes submitted for inclusion in the CLRP have been developed by local, state, and/or regional agencies with input from the public.
- Two 30-day comment periods during the annual CLRP update process provide additional opportunities for input:

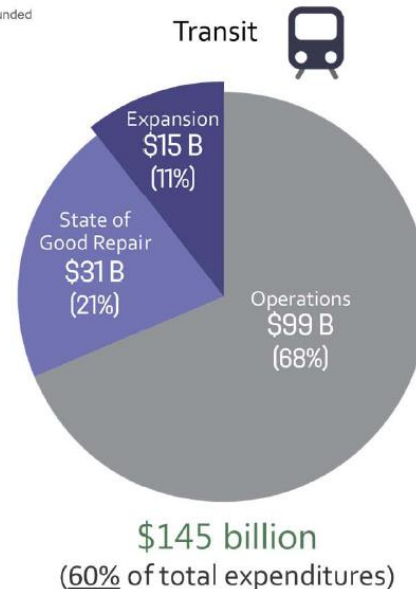
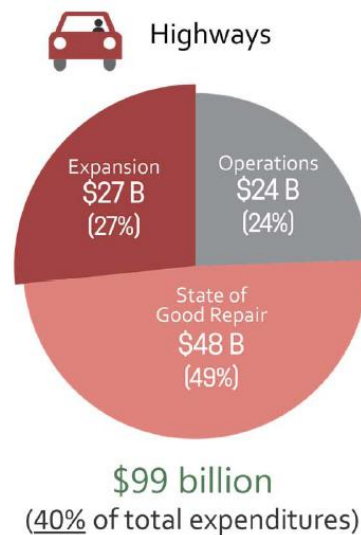


What is the CLRP?

- Federally required long-range transportation plan
- Includes all regionally significant highway, bridge, and transit projects currently planned through 2040
- Funding must be “reasonably expected to be available” to build, operate, and maintain the planned system
- Must conform with federal air quality standards

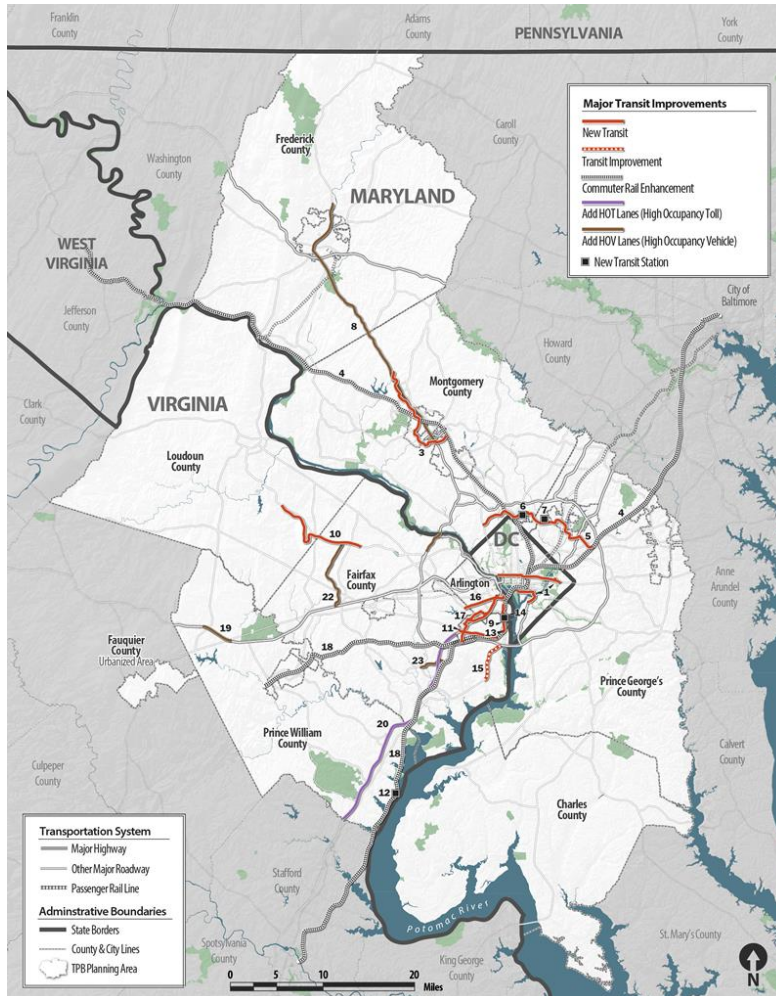
What's Already in the CLRP?

- **500+** regionally significant highway, bridge, transit, bicycle, and pedestrian improvement projects
- **1,188 new lane-miles** of roadway (7% increase from today)
- **44 new miles** of rail transit (15% increase from today)
- **\$244 billion** in spending

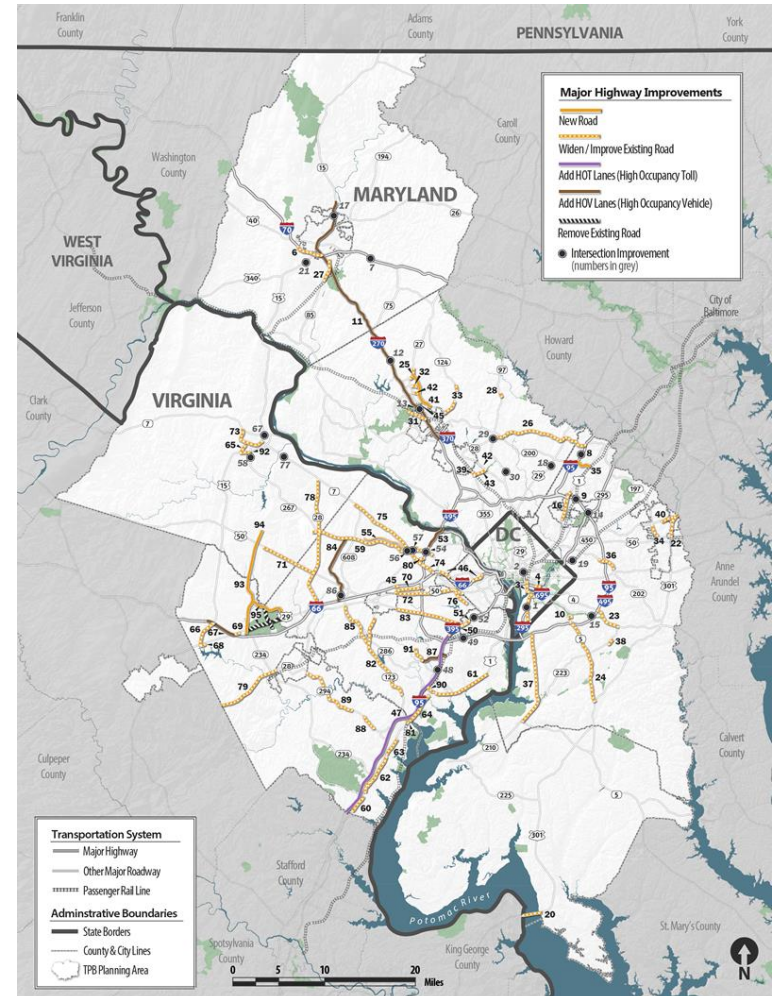


What's Already in the CLRP?

Major Transit Improvements

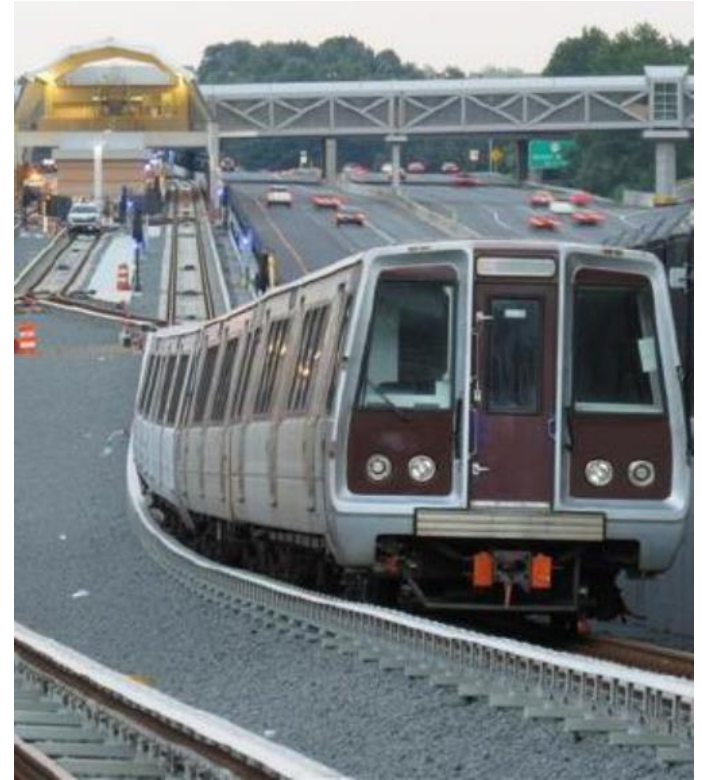


Major Highway Improvements



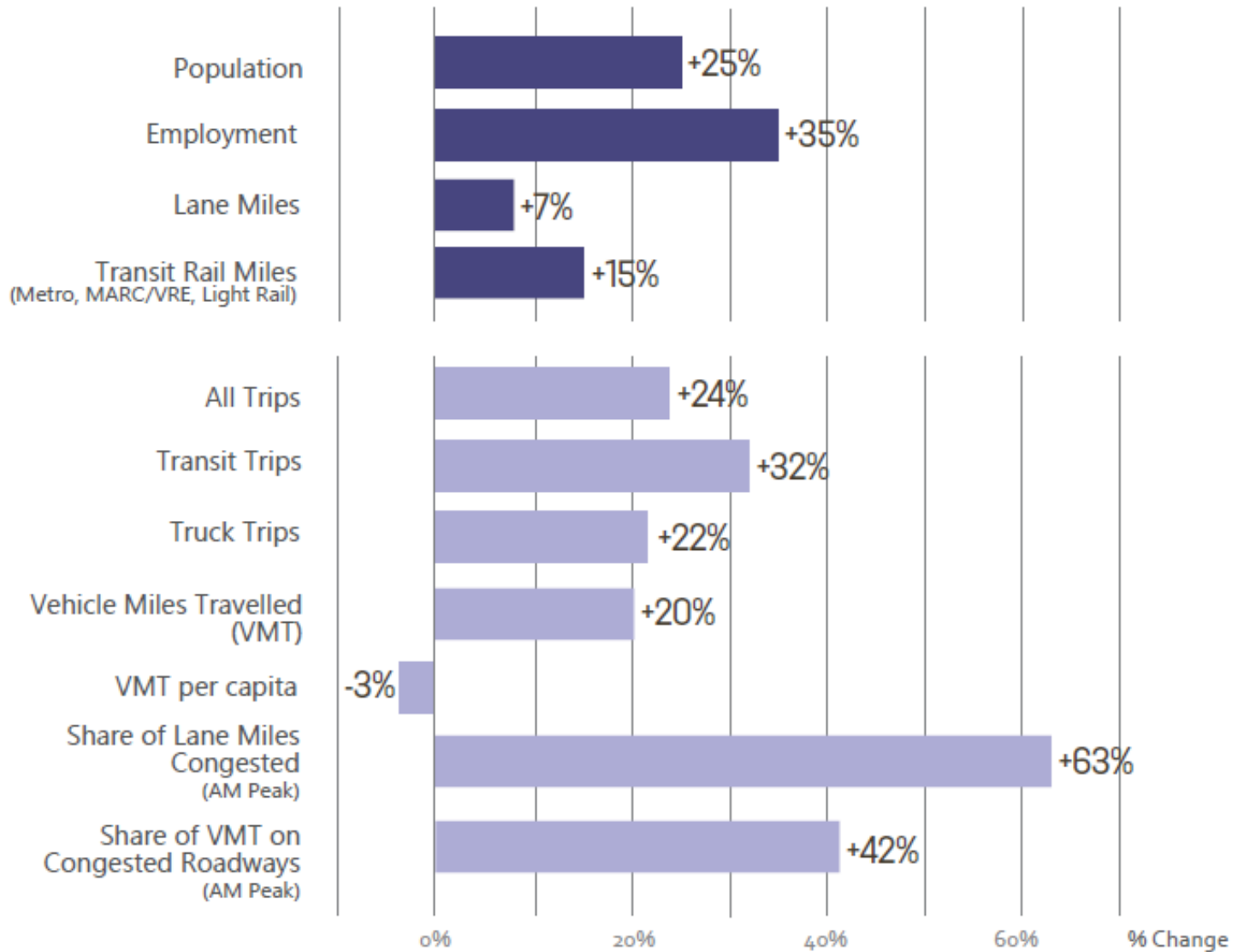
What's Already in the CLRP?

- Silver Line, Phase II
- Corridor Cities Transitway (CCT)
- Purple Line
- DC Streetcars
- I-270/US 15 Corridor
- South Capitol Street Bridge



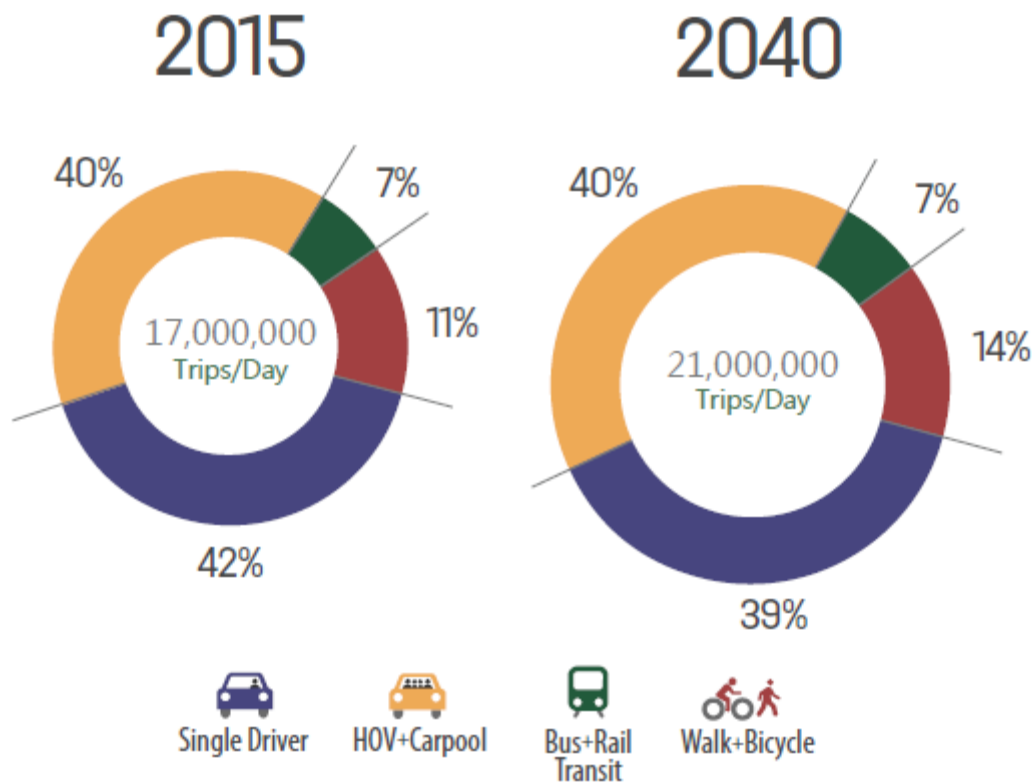
For a complete listing of projects, visit www.mwcog.org/CLRP/projects.





Our Future Under the 2014 CLRP



Our Future Under the 2014 CLRP

Daily Travel – Mode Share and Trips by Mode (2015-2040)



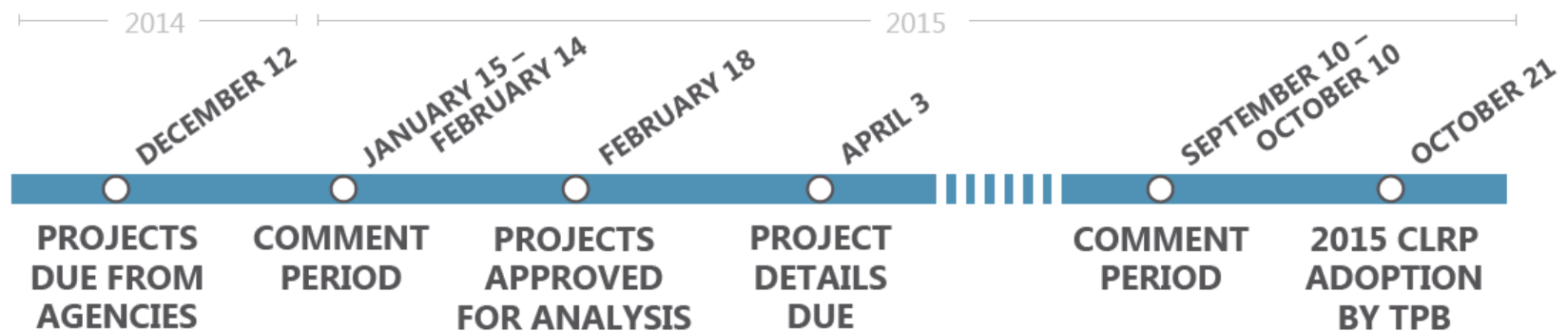
957,000 more trips	 Walk+Bicycle	+49% From 2015
372,000 more trips	 Transit	+32% From 2015
1,690,000 more trips	 HOV+Carpool	+25% From 2015
1,076,000 more trips	 Single Driver	+15% From 2015

Find the full results of the 2014 CLRP Performance Analysis at www.mwcog.org/CLRP2014.

2015 CLRP Update

- Six major new projects or changes to existing projects submitted by VDOT and DDOT
- Projects to be approved for Air Quality Conformity Analysis and Performance Analysis on February 18

SCHEDULE FOR DEVELOPMENT & ADOPTION OF THE 2015 CLRP UPDATE



Find the complete 2015 CLRP update schedule at www.mwcog.org/CLRP2015.

2015 CLRP Update: Think Regionally, Act Locally

- 2015 CLRP Call for Projects: “Agencies should consider regional goals, priorities, and needs when developing and selecting projects to submit for inclusion in the CLRP.”
 - **TPB Vision: Goals, Objectives, Strategies**
 - **Regional Priorities: Maintenance, Fairness, Efficiency**
 - **Additional Policy Context**
 - National Capital Region Climate Change Report (2008)
 - Region Forward (2010)
 - CLRP Aspirations Scenario (2010)
 - “What Would It Take?” Scenario Study (2010)

2015 CLRP Update: Think Regionally, Act Locally

THE REGION'S GREATEST NEEDS

- **Reduce congestion on the roadway and/or transit system**
- **Improve the operational efficiency of the existing roadway and/or transit system**
- **Provide high-quality transportation options between and/or within Activity Centers**
- **Reduce vehicle-miles traveled (VMT) per capita**
- **Reduce emissions of criteria pollutants**
- **Reduce emissions of greenhouse gases**
- **Increase use of travel modes other than driving alone**

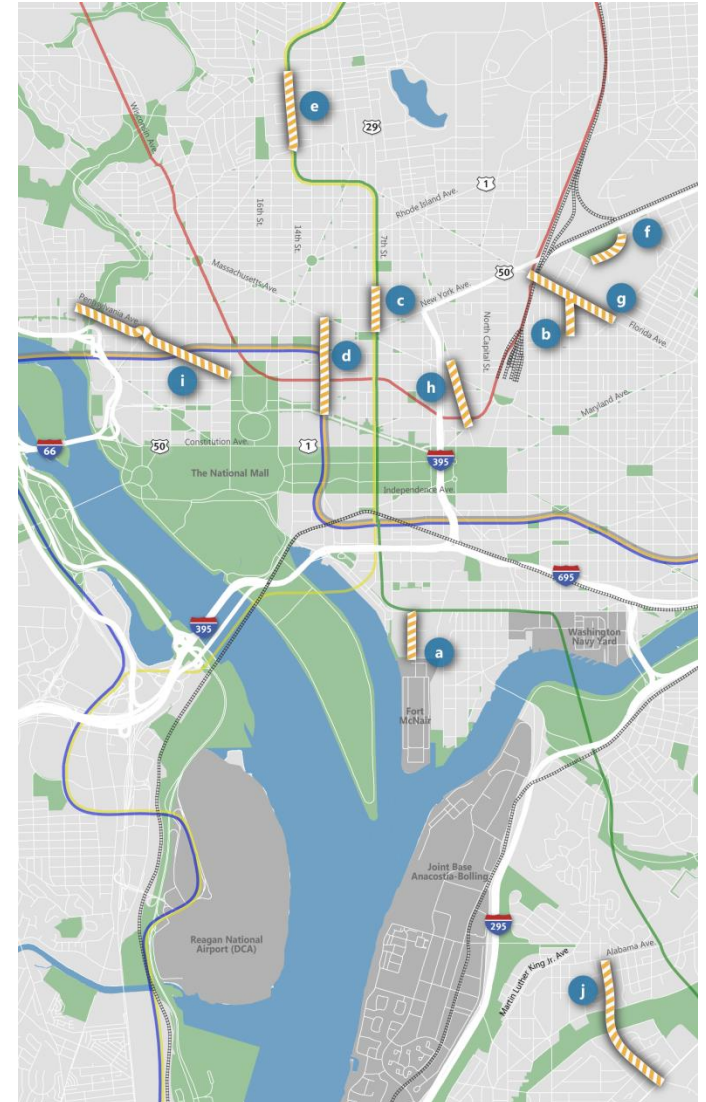
2015 CLRP Update: Additions and Changes

District of Columbia

Dedicated Bike Lanes, Citywide

Length: 9 miles
Complete: 2015
Cost: \$470,000

- a) 4th St. SW, M St. to P St. - 4 to 2 lanes
- b) 6th St. NE, Florida Ave. to K St.- 2 to 1 lane
- c) 7th St. NW, New York Ave. to N St. - 4 to 2 lanes
- d) 12th St. NW, Penn. Ave. to Mass. Ave. - 4 to 3 lanes
- e) 14th St. NW, Florida Ave. to Columbia Rd. - 4 to 2 lanes
- f) Brentwood Pkwy. NE, 6th St./Penn St. to 9th St. - 4 to 2 lanes
- g) Florida Ave. NE, 2nd St. to W. Virginia Ave. - 6 to 4 or 5 lanes
- h) New Jersey Ave. NW, H St. to Louisiana Ave. - 4 to 2 lanes
- i) Pennsylvania Ave. NW, 17th St. to 29th St. - 4/6 to 2 or 4 lanes
- j) Wheeler Rd. SE, Alabama Ave. to Southern Ave. - 4 to 2 lanes



2015 CLRP Update: Additions and Changes

Virginia

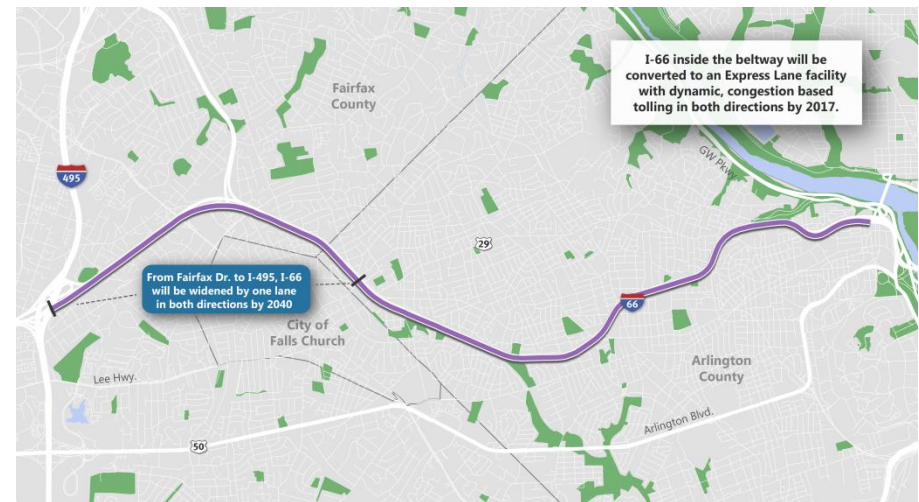
I-66 Corridor Improvements inside the Beltway US Route 29 in Rosslyn to I-495

Length: 10 miles

Complete: 2017 (tolling, multimodal), 2040 (widening)

Cost: \$75-100 million

- Convert I-66 to a managed express lanes facility with dynamic, congestion-based tolling for all vehicles with less than 3 occupants in both directions, curing peak periods only by 2017
- Implement enhanced bus service and complete elements of the bicycle and pedestrian network by 2017
- Widen from 2 to 3 lanes in both directions between Fairfax Dr. and I-495 by 2040.



2015 CLRP Update: Additions and Changes

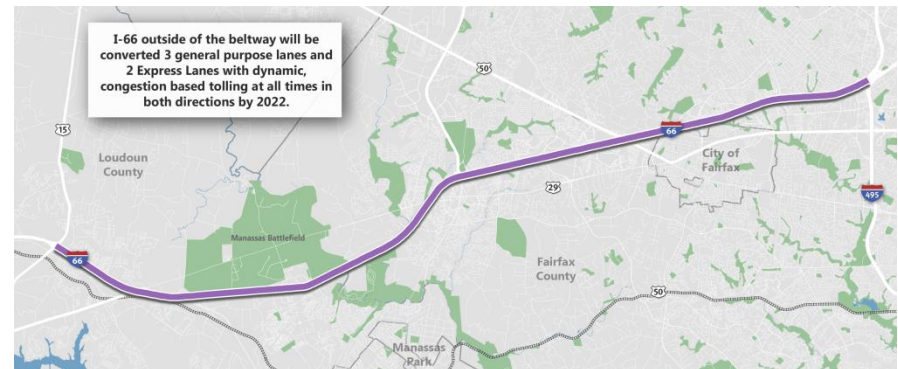
I-66 Corridor Improvements outside the Beltway I-495 to US Route 15 in Prince William County

Length: 25miles

Complete: 2022

Cost: \$2-3 billion

- Reconfigure I-66 to have 2 managed express lanes and 3 general purpose lanes in each direction.
- Express lanes use dynamic, congestion-based tolling for vehicles with less than 3 occupants at all times to maintain free-flow conditions
- New high-frequency bus service and construction of new or expanded commuter park-and-ride lots
- Two alternatives for access and egress points between the general purpose and express lanes will be analyzed separately



2015 CLRP Update: Additions and Changes

Project Removals

District of Columbia

- Benning Road Streetcar Spur
from Benning Rd., to Minnesota Ave. Metro Station
 - In CLRP since 2014

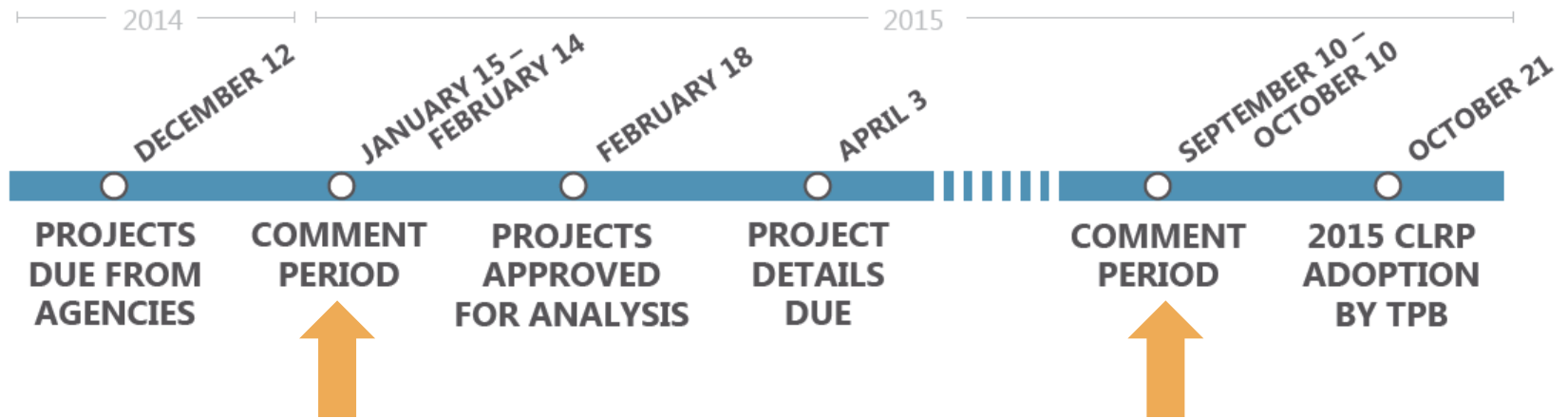
Virginia

- Columbia Pike Streetcar
from Skyline Center to Pentagon City
 - In CLRP since 2008
- Crystal City Streetcar
from Pentagon City Metro Station to Four Mile Run/Alexandria City Line
 - In CLRP since 2011

2015 CLRP Update: Additions and Changes

For complete project descriptions, including information from agencies about how the projects they submit help support or advance regional goals, priorities, and needs, visit www.mwcog.org/CLRP2015.

Comment on Additions and Changes



Comment on additions and changes to projects

Comment on draft plan and analysis results

Comment on Additions and Changes

- Find all documents available for public comment at www.mwcog.org/TPBcomment.
- Submit comments:
 - On the web at www.mwcog.org/TPBcomment
 - By email at TPBcomment@mwcog.org
- **Deadline is February 14, 2015.**

Getting the Word Out

- E-blast to TPB stakeholders and subscribers
- Ads placed in The Washington Post, Afro-American, and Washington Hispanic
- Featured in TPB Weekly Report and TPB News
- Outreach via Facebook and Twitter