

Metropolitan Washington Council of Governments

FARM Committee

January 8, 2021





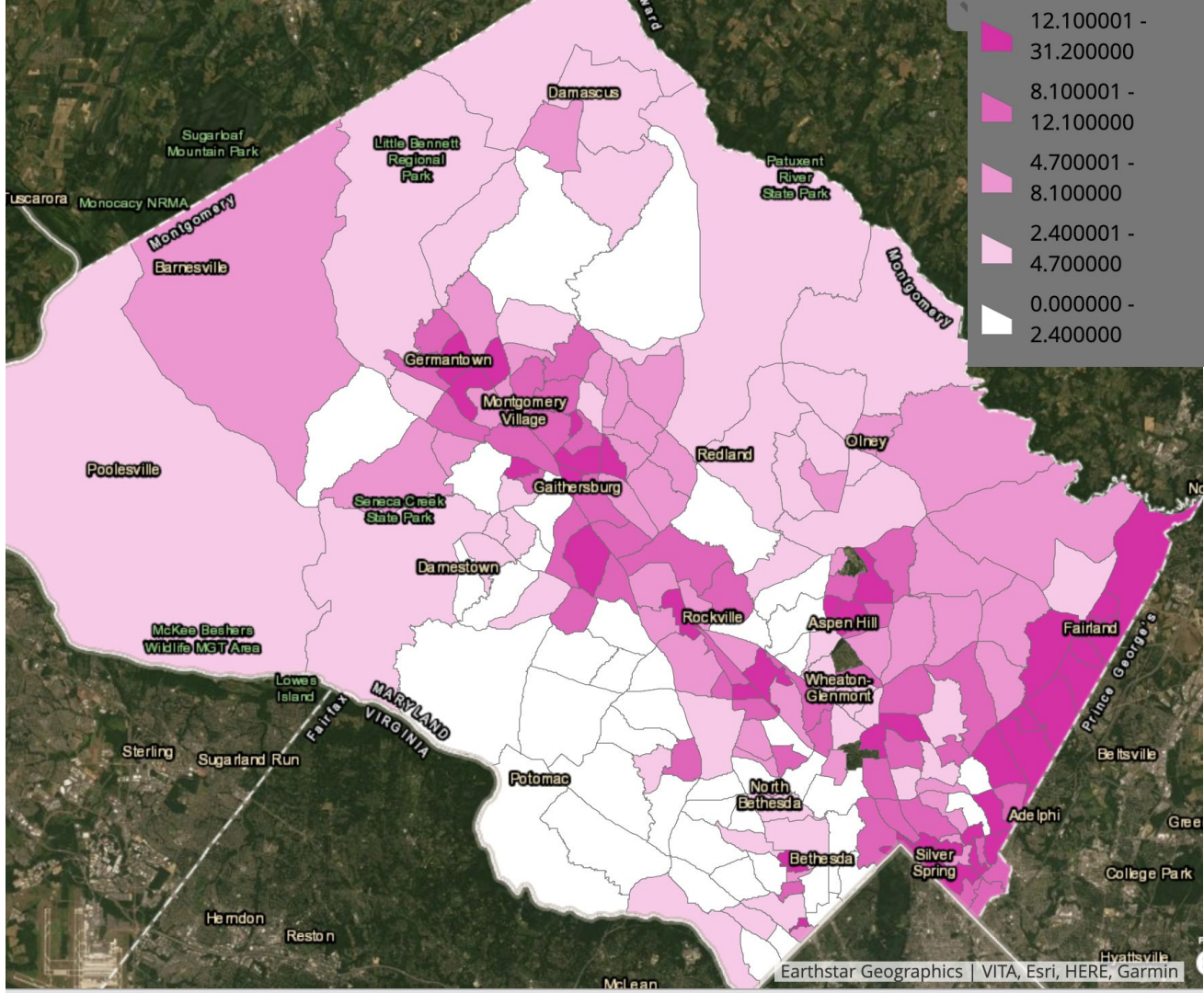
Food Council: Key Strategies



- Increase capacity of local programs, businesses, and organizations
- Grow and strengthen networks and partnerships
- Lead advocacy and drive policy and process change
- Build knowledge and awareness of resources and issues
- Research and communicate opportunities and challenges
- Foster food system leadership locally, regionally & nationally

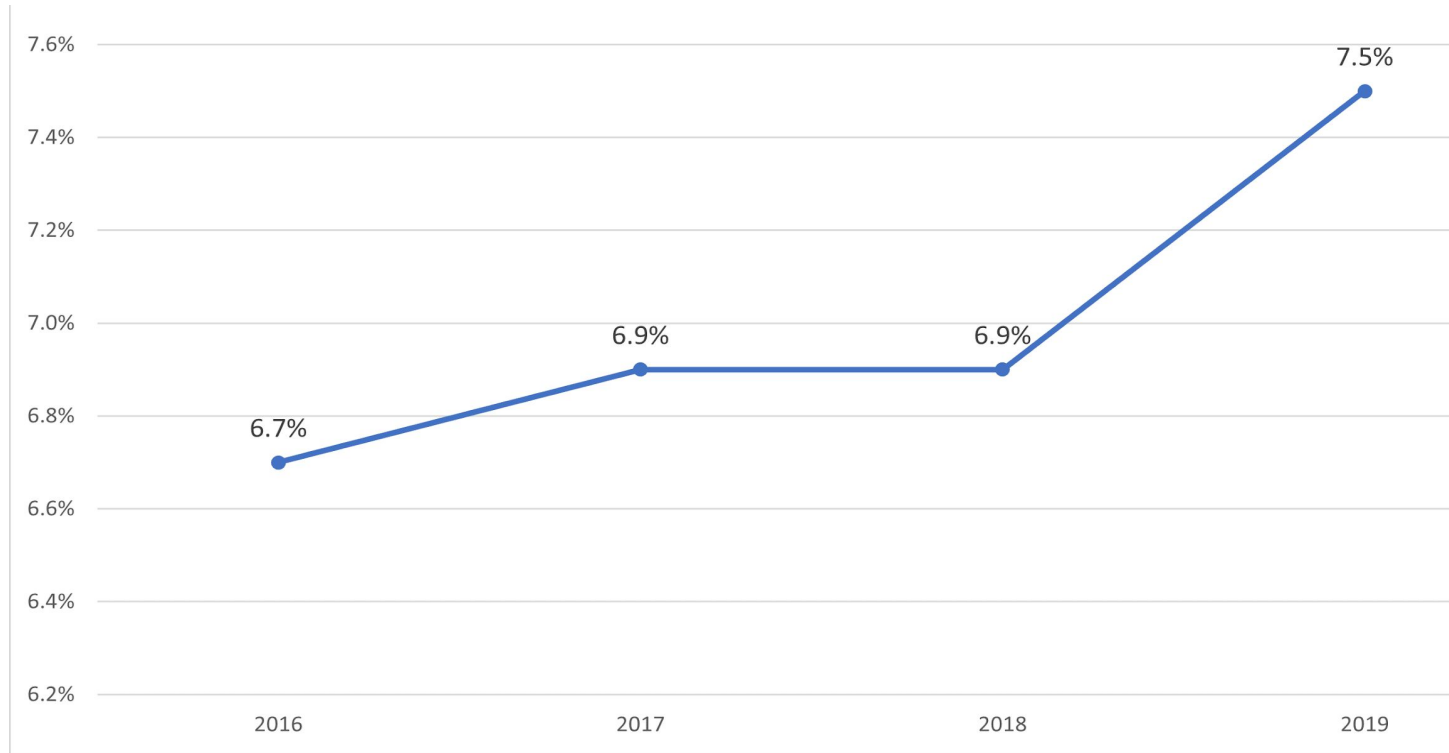


MONTGOMERY COUNTY
FOOD COUNCIL





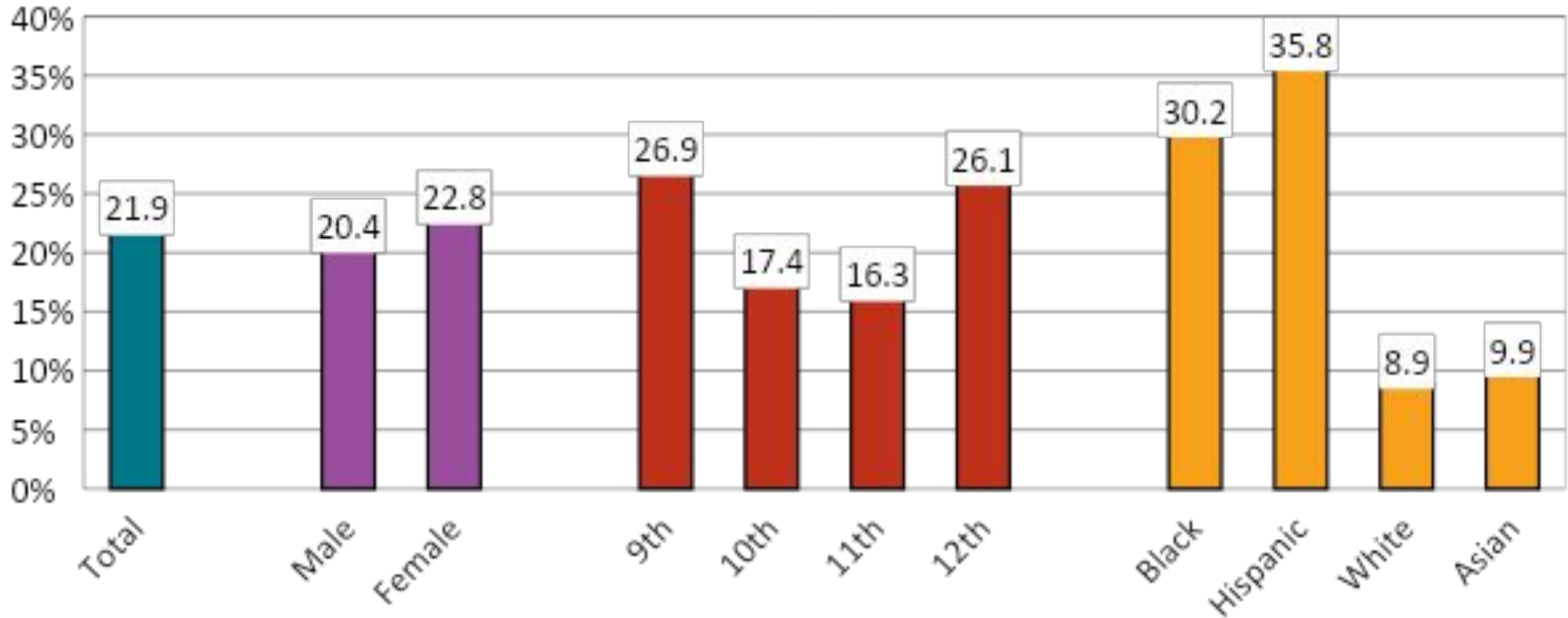
Poverty on the Rise



Montgomery County Poverty Rate - 2019 U.S. Census American Community Survey



Student Food Insecurity Disparities



*During the 12 months before the survey

†B > W, H > W (Based on t-test analysis, $p < 0.05$.)

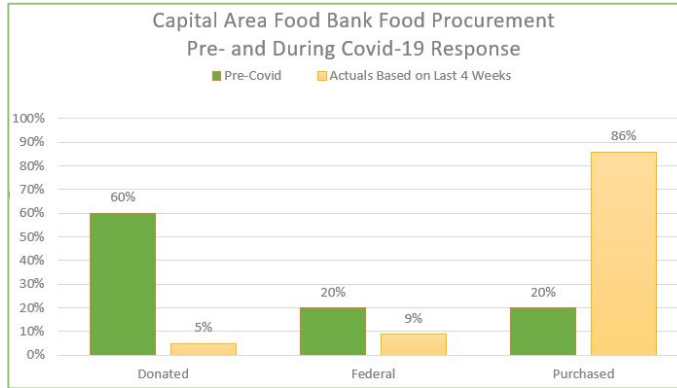
All Hispanic students are included in the Hispanic category. All other races are non-Hispanic.

This graph contains weighted results.

2018 Maryland High School Youth Risk Behavior Survey/Youth Tobacco Survey
(YRBS/YTS), Maryland Department of Health



Potential Increased Long-Term Food Insecurity



2020 Projected Food Insecurity Rate

13%

2018 → 2020 Change

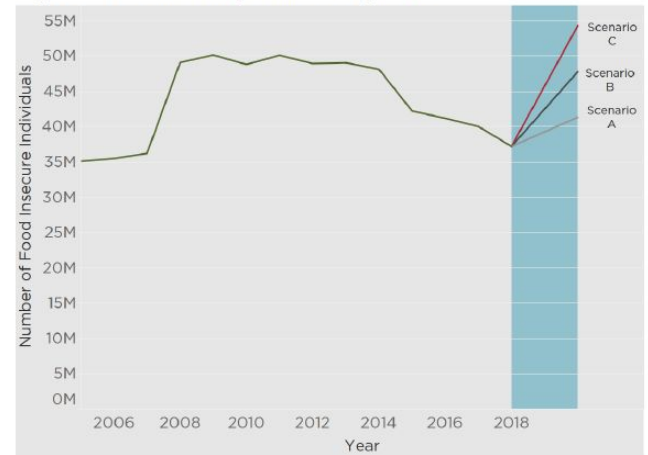
+62%

Table 1. Food Insecurity Projections by Scenario

	Scenarios		
	A	B	C
Unemployment rate increase (% pts)	1.1	4.5	7.6
Poverty rate increase (% pts)	1.5	2.6	4.0
Food insecurity rate increase (% pts)	1.3	3.3	5.3
Increase to number of food-insecure individuals	4.1 million	10.6 million	17.1 million

Source: Calculations by Dr. Craig Gundersen with data from the 2014 to 2018 Current Population Survey, December Supplement.

Figure 3. Food Insecurity Trends & Projections



The Senior Connection

📍 3950 Ferrara Dr, Wheaton-Glenmont, 20906

☎ 301-962-0820

🌐 <http://seniorconnectionmc.org>

✉ susan.girard@seniorconnectionmc.org

🕒 10-4 Monday through Friday

👤 Volunteers will shop from a list using client's funds and bring the groceries to the client's door.

Type: Choice Pantry

Accessibility: Appointment Required, Service to a Specific Population

Features: Delivery



Glenmont United Methodist Church (Manna Partner)

☎ 301-424-1130

🌐 <http://mannafood.org>

🕒 Tuesdays 4-7PM, Thursdays 2 - 5pm

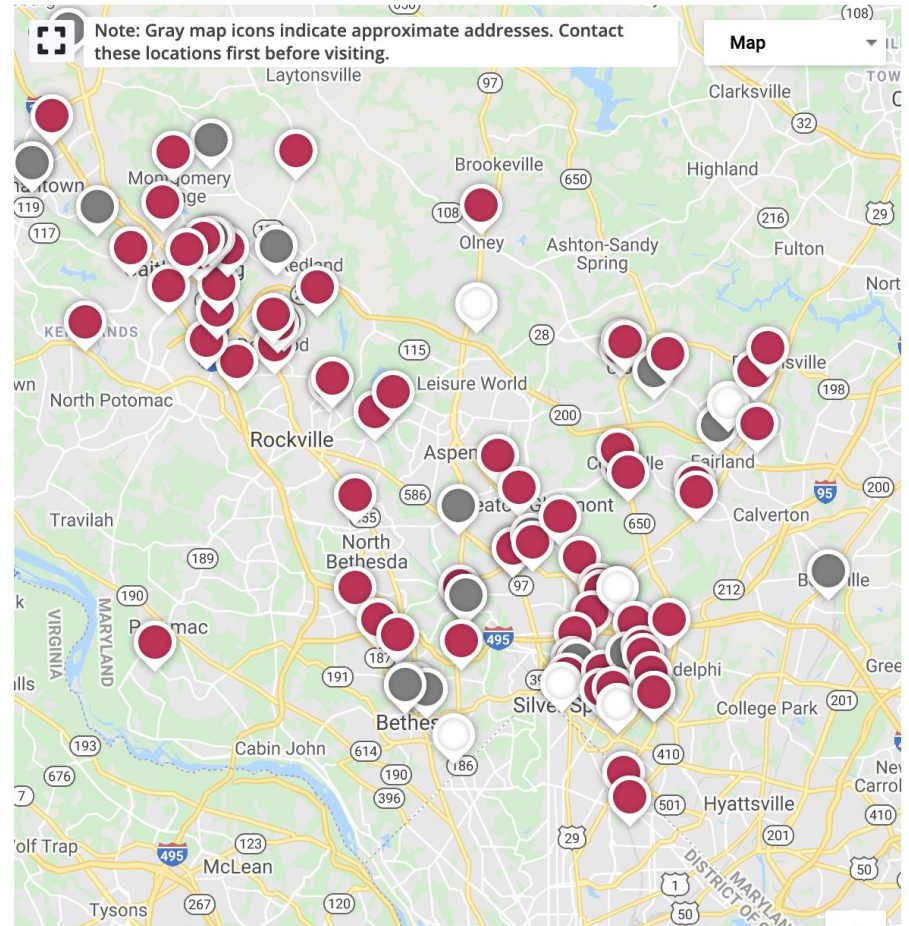
Type: Pre-Packed Pantry Items

Accessibility: Appointment Required, Documentation Required

Languages: Spanish

Features: Special Diet Accommodations, Fresh Produce

Catholic Charities/Montgomery County Family



Montgomery County Food Council: Food Assistance Resource Map
www.mocofoodcouncil.org



Food Security Task Force



Mission:

- Increase the volume of food in the food assistance system;
- Improve access to food by building the capacity of the food assistance network to store and strategically, safely, and efficiently distribute food to residents through home delivery and community pickup sites; and
- To communicate information to residents on available resources and ensure residents are connected with available resources.



more food



Prepared Meals

from local caterers and restaurants

Shelf-stable Foods & Pantry Items

from local suppliers

Increased Fresh Food

from local farms and wholesalers

Victory Gardening & Community Farming

Provide resident access to yard and patio gardening supplies, space, and educational materials



to more people



Increased Benefits Access

expanding SNAP Outreach
expanding Farmers Market Double Dollars

Leveraging Technology to Efficiently Scale

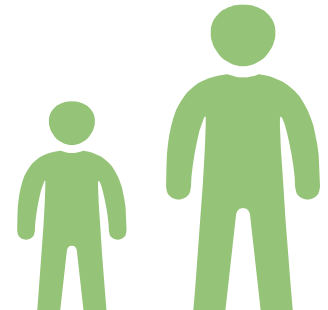
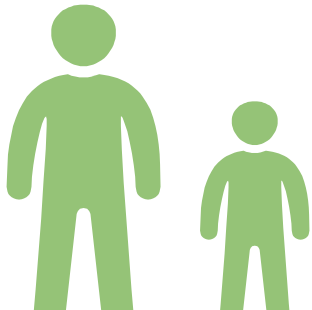
Web intake → Screening for services → Food Delivery

Getting the Word Out

Posters & Bus Advertisements
Digital Messaging, Traditional Paid & Earned Media

Community-level Engagement & Coordination

Community Food Resource Navigators
Community Food Hubs



40

Montgomery County
zip codes served

100

Organizations helped
by the FSTF



8

Service
Consolidation
Hubs Serviced



14,015,766+

**pounds of food
provided to
people experiencing
food insecurity**

853,160

pounds of rice, beans
and lentils purchased,
repackaged and distributed



- Rice: **428,885+** lbs
- Beans: **287,472+** lbs
- Lentils: **67,992+** lbs



Prepared Meals

5,925,725

Prepared meals distributed to MCPS students

206,533+

Prepared meals distributed by Food Assistance Providers

88,000

Prepared meals distributed to older adults at risk

464,847

USDA produce and
combo boxes
distributed to partners



\$2,796,000

in grants awarded through

5

Grant Programs

Farm to Food Bank - Capacity Building -
Resident and Community Gardens -
SNAP Outreach & Food Access

4,135+

**clients served through
the Food Access Call
Center**

FACC has also helped clients with rental assistance, SNAP and other social services





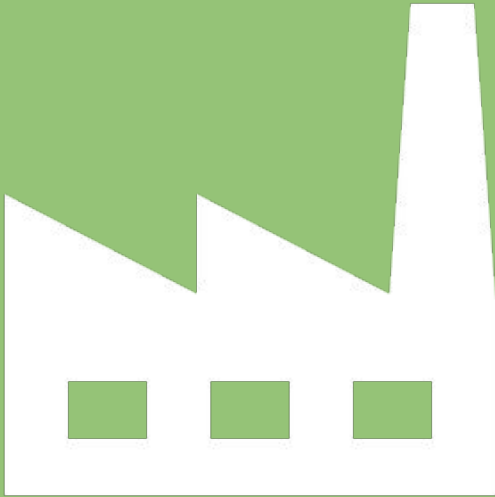
PPE Distribution

10,000+

Face coverings

250+ gallons

Hand sanitizer



\$324,011

Awarded to 22+ local Montgomery County-based food producing farms



\$8,625,000

of food procured from local wholesalers and food banks provided to Food Assistance Providers



Heather Bruskin

Executive Director

hbruskin@mocofoodcouncil.org