

**Washington-Baltimore Regional Airports  
Monthly Enplanement Statistics  
(January - December)  
2009, 2010, 2011**

Table 1 shows twelve month (January through December) enplanement statistics for the three regional airports for the last three years. These data are graphed in Figure 1 through Figure 4. Table 2 shows the monthly enplanement percent change for the same time period for all three airports. Annual enplanements by destination are presented in Table 3 and percent changes in Table 4. Table 5 and Table 6 show monthly enplanements for domestic and international destinations and percent change by airport, respectively.

Some of the major findings include:

- Annual enplanements grew by 4.4 percent in 2011 when compared with the same time period in 2009, and 1 percent between 2010 and 2011.
- Baltimore/Washington International Thurgood Marshall Airport (BWI) and Ronald Reagan Washington National Airport (DCA) recorded growth of enplanements between 2010 and 2011 with 2 percent and 3.6 percent respectively while enplanements at Washington Dulles International Airport (IAD) declined by almost 2 percent.
- The sharp increase in enplanements at all three airports during February 2011 can be attributed to the three major snow events during the month and subsequent reduced flight operations and passenger volumes in the Mid-Atlantic and Northeast in 2010.
- At BWI, while total enplanements increased by 2 percent between 2010 and 2011, international enplanements increased by 8.8 percent and domestic by 1.7 percent. However, domestic destination enplanements accounted for almost 89 percent of the total increase.
- At IAD, while total enplanements declined by almost 2 percent between 2010 and 2011, international enplanements show an increase of 2 percent.
- At (DCA), enplanements increased by 3.6 percent between 2010 and 2011. All of the increase was domestic; international (trans-border, i.e., flights between the United States and Canada, plus flights to the Bahamas and Bermuda [seasonal] declined by almost 12 percent).
- While enplanements declined at all airports during February 2010, international destination enplanement increased by 23 percent at BWI. Other than July, international enplanements in 2010 at BWI gained a double digit increase while at DCA, this increase occurred from March through July, and September (see Table 5 and Table 6).

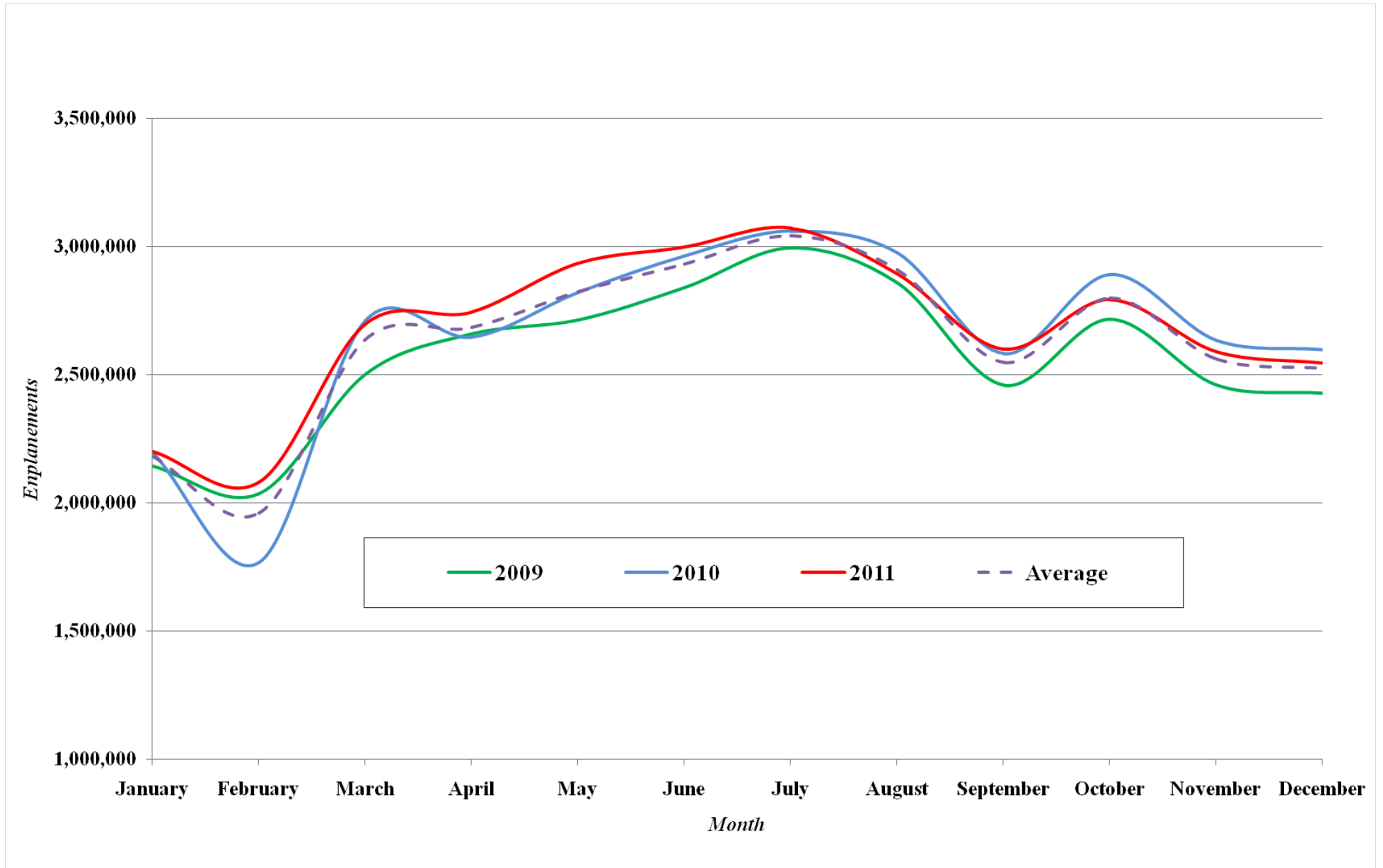
**Table 1: Washington-Baltimore Regional Airports Monthly Enplanement Statistics (January - December)**

Month	2009				2010				2011			
	BWI	DCA	IAD	Total	BWI	DCA	IAD	Total	BWI	DCA	IAD	Total
January	704,813	594,310	845,100	2,144,223	749,143	592,162	855,103	2,196,408	754,489	605,586	841,456	2,201,531
February	667,801	613,149	755,736	2,036,686	585,944	508,869	671,646	1,766,459	704,249	621,144	756,350	2,081,743
March	843,997	721,584	936,803	2,502,384	923,729	798,048	988,834	2,710,611	937,044	812,346	949,292	2,698,682
April	899,301	785,036	973,673	2,658,010	908,210	783,009	955,542	2,646,761	955,021	821,046	968,641	2,744,708
May	921,262	787,633	1,005,711	2,714,606	972,415	807,074	1,040,798	2,820,287	1,035,623	866,106	1,032,633	2,934,362
June	965,034	798,330	1,075,911	2,839,275	1,051,172	810,418	1,100,292	2,961,882	1,074,699	851,721	1,070,351	2,996,771
July	1,046,405	824,851	1,123,441	2,994,697	1,096,220	819,122	1,144,528	3,059,870	1,110,031	856,459	1,105,242	3,071,732
August	993,087	779,403	1,087,120	2,859,610	1,045,090	812,638	1,117,239	2,974,967	1,014,906	823,431	1,055,765	2,894,102
September	841,387	688,559	929,087	2,459,033	873,375	736,424	973,264	2,583,063	889,364	755,136	955,574	2,600,074
October	938,039	795,181	982,873	2,716,093	1,000,785	838,988	1,051,658	2,891,431	972,464	833,327	986,618	2,792,409
November	852,444	707,088	899,942	2,459,474	909,808	779,585	946,150	2,635,543	897,420	785,401	908,038	2,590,859
December	823,295	672,119	931,374	2,426,788	880,822	749,207	967,851	2,597,880	876,268	730,260	939,988	2,546,516
<b>Total</b>	<b>10,496,865</b>	<b>8,767,243</b>	<b>11,546,771</b>	<b>30,810,879</b>	<b>10,996,713</b>	<b>9,035,544</b>	<b>11,812,905</b>	<b>31,845,162</b>	<b>11,221,578</b>	<b>9,361,963</b>	<b>11,569,948</b>	<b>32,153,489</b>

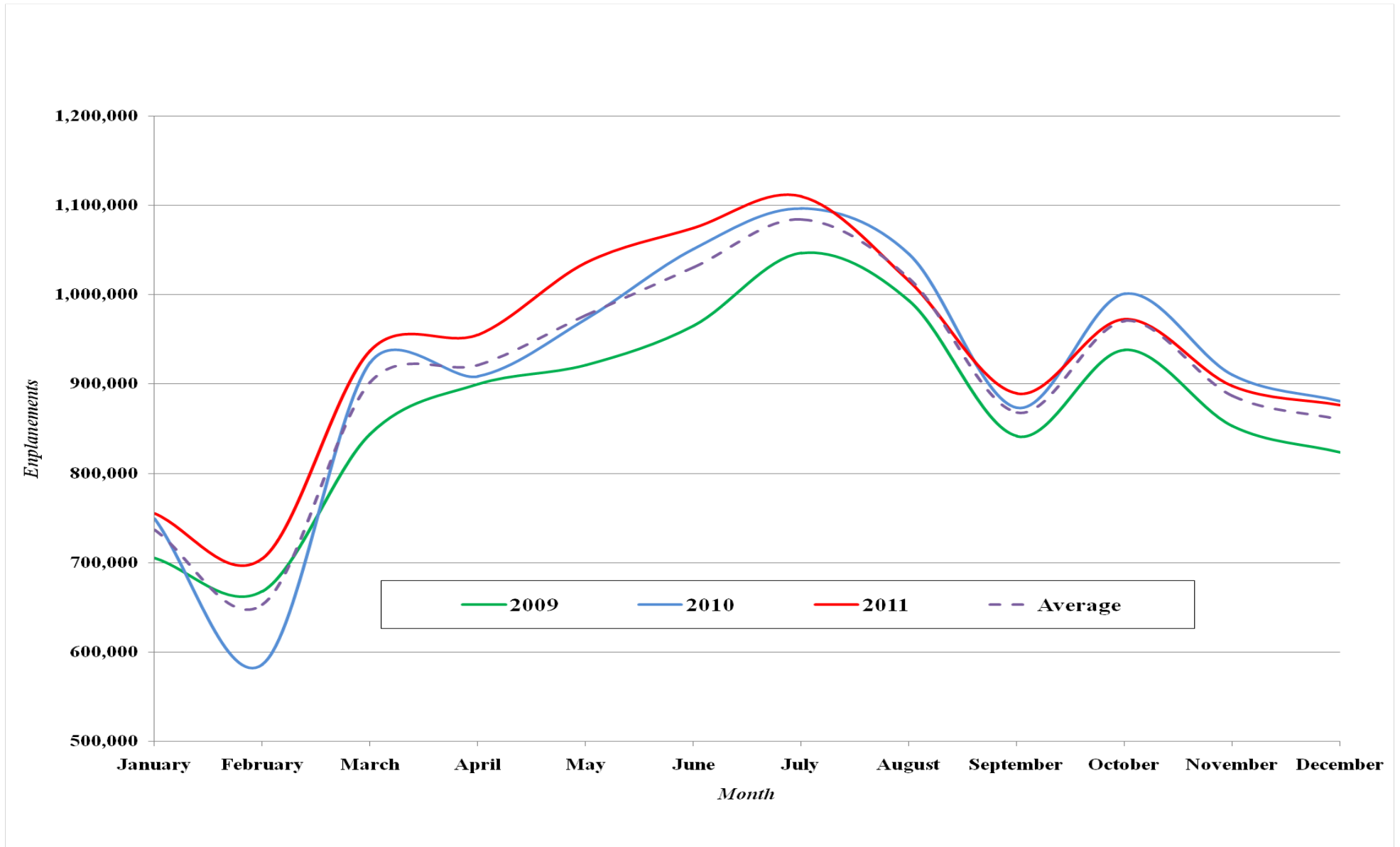
**Table 2: Washington-Baltimore Regional Airports Percent Change Monthly Enplanement Statistics (January - December)**

Month	2009/10				2010/11				2009/11			
	BWI	DCA	IAD	Total	BWI	DCA	IAD	Total	BWI	DCA	IAD	Total
January	6.3%	-0.4%	1.2%	2.4%	0.7%	2.3%	-1.6%	0.2%	7.0%	1.9%	-0.4%	2.7%
February	-12.3%	-17.0%	-11.1%	-13.3%	20.2%	22.1%	12.6%	17.8%	5.5%	1.3%	0.1%	2.2%
March	9.4%	10.6%	5.6%	8.3%	1.4%	1.8%	-4.0%	-0.4%	11.0%	12.6%	1.3%	7.8%
April	1.0%	-0.3%	-1.9%	-0.4%	5.2%	4.9%	1.4%	3.7%	6.2%	4.6%	-0.5%	3.3%
May	5.6%	2.5%	3.5%	3.9%	6.5%	7.3%	-0.8%	4.0%	12.4%	10.0%	2.7%	8.1%
June	8.9%	1.5%	2.3%	4.3%	2.2%	5.1%	-2.7%	1.2%	11.4%	6.7%	-0.5%	5.5%
July	4.8%	-0.7%	1.9%	2.2%	1.3%	4.6%	-3.4%	0.4%	6.1%	3.8%	-1.6%	2.6%
August	5.2%	4.3%	2.8%	4.0%	-2.9%	1.3%	-5.5%	-2.7%	2.2%	5.6%	-2.9%	1.2%
September	3.8%	7.0%	4.8%	5.0%	1.8%	2.5%	-1.8%	0.7%	5.7%	9.7%	2.9%	5.7%
October	6.7%	5.5%	7.0%	6.5%	-2.8%	-0.7%	-6.2%	-3.4%	3.7%	4.8%	0.4%	2.8%
November	6.7%	10.3%	5.1%	7.2%	-1.4%	0.7%	-4.0%	-1.7%	5.3%	11.1%	0.9%	5.3%
December	7.0%	11.5%	3.9%	7.1%	-0.5%	-2.5%	-2.9%	-2.0%	6.4%	8.7%	0.9%	4.9%
<b>Total</b>	<b>4.8%</b>	<b>3.1%</b>	<b>2.3%</b>	<b>3.4%</b>	<b>2.0%</b>	<b>3.6%</b>	<b>-2.1%</b>	<b>1.0%</b>	<b>6.9%</b>	<b>6.8%</b>	<b>0.2%</b>	<b>4.4%</b>

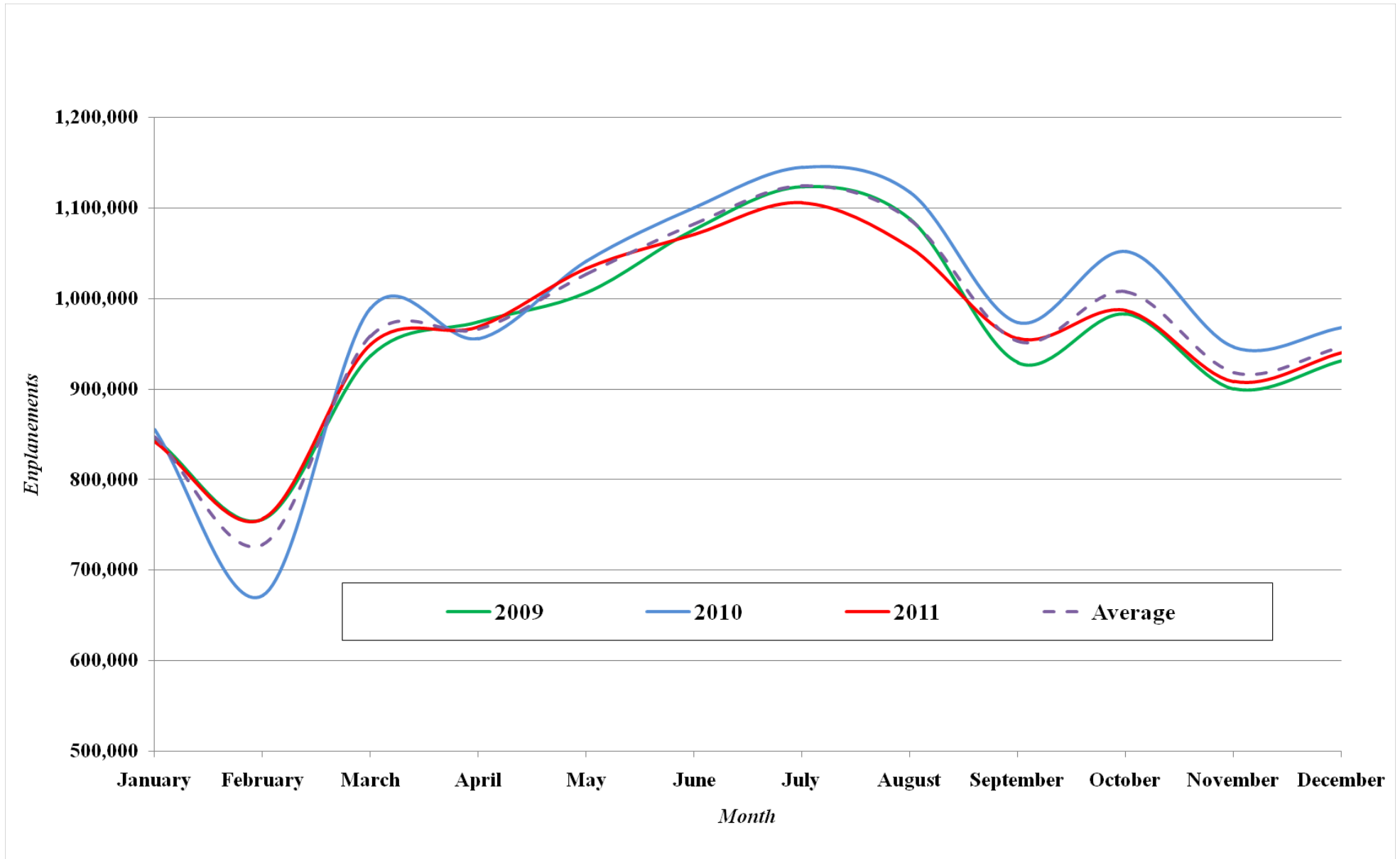
Figure 1: Washington-Baltimore Regional Airports, Monthly Enplanement Statistics



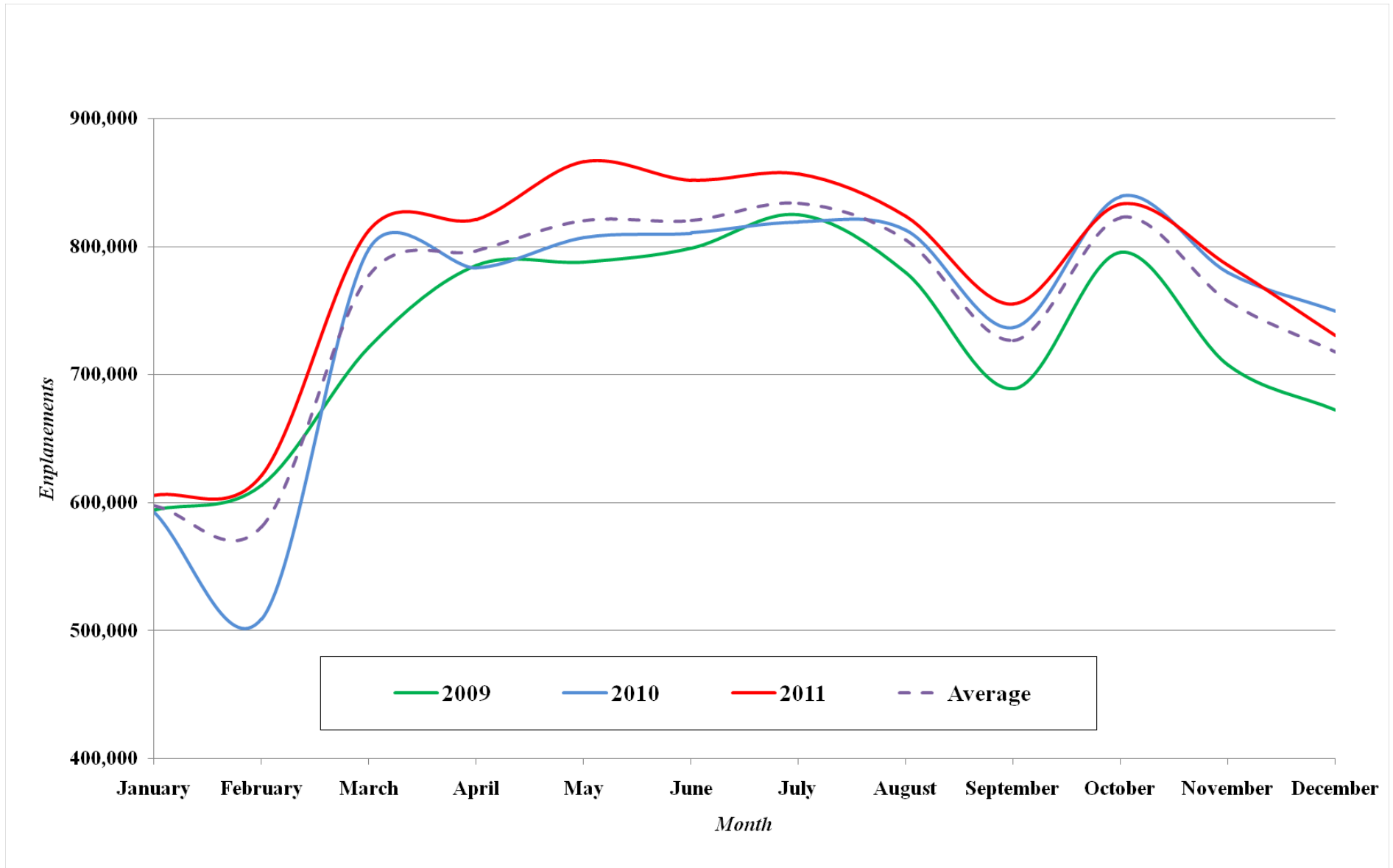
**Figure 2: BWI Monthly Enplanement Statistics**



**Figure 3: IAD Monthly Enplanement Statistics**



**Figure 4: DCA Monthly Enplanement Statistics**



**Table 3: Washington-Baltimore Regional Airports Annual Enplanement Statistics by Destination (January - December)**

	BWI			DCA			IAD		
	Dom.	Inter.	Total	Dom.	Inter.	Total	Dom.	Inter.	Total
<b>2009</b>	10,288,001	208,864	10,496,865	8,634,011	133,232	8,767,243	8,429,500	3,117,271	11,546,771
<b>2010</b>	10,750,031	246,682	10,996,713	8,891,204	144,340	9,035,544	8,635,670	3,177,235	11,812,905
<b>2011</b>	10,949,045	272,533	11,221,578	9,235,899	126,064	9,361,963	8,345,516	3,224,432	11,569,948

**Table 4: Washington-Baltimore Regional Airports Percent Change Annual Enplanement Statistics by Destination (January - December)**

	BWI			DCA			IAD		
	Dom.	Inter.	Total	Dom.	Inter.	Total	Dom.	Inter.	Total
<b>2009/10</b>	4.5%	18.1%	4.8%	3.0%	8.3%	3.1%	2.4%	1.9%	2.3%
<b>2010/11</b>	1.9%	10.5%	2.0%	3.9%	-12.7%	3.6%	-3.4%	1.5%	-2.1%
<b>2009/11</b>	6.4%	30.5%	6.9%	7.0%	-5.4%	6.8%	-1.0%	3.4%	0.2%

**Table 5: Washington-Baltimore Regional Airports Monthly Enplanement Statistics by Destination (January - December)**

	2010						2011					
	BWI		DCA		IAD		BWI		DCA		IAD	
	Domestic	Inter.	Domestic	Inter.	Domestic	Inter.	Domestic	Inter.	Domestic	Inter.	Domestic	Inter.
<b>January</b>	731,639	17,504	583,006	9,156	616,195	238,908	736,677	17,812	597,670	7,916	606,681	234,775
<b>February</b>	570,326	15,618	500,620	8,249	499,786	171,860	687,482	16,767	613,482	7,662	563,476	192,874
<b>March</b>	901,596	22,133	784,878	13,170	739,332	249,502	914,960	22,084	801,702	10,644	700,642	248,650
<b>April</b>	887,333	20,877	770,506	12,503	723,513	232,029	932,462	22,559	810,919	10,127	703,353	265,288
<b>May</b>	950,419	21,996	793,321	13,753	746,228	294,570	1,009,599	26,024	854,194	11,912	732,045	300,588
<b>June</b>	1,027,260	23,912	794,001	16,417	787,123	313,169	1,047,570	27,129	837,695	14,026	747,952	322,399
<b>July</b>	1,073,043	23,177	802,041	17,081	832,085	312,443	1,082,073	28,018	842,766	13,693	784,921	320,321
<b>August</b>	1,022,055	23,035	796,472	16,166	815,831	301,408	988,341	26,565	810,939	12,492	757,355	298,410
<b>September</b>	855,224	18,151	726,290	10,134	688,611	284,653	870,537	18,827	746,405	8,731	668,781	286,793
<b>October</b>	979,919	20,866	829,037	9,950	774,870	276,788	951,197	21,267	822,980	10,347	724,156	262,462
<b>November</b>	890,477	19,331	770,833	8,752	708,486	237,664	875,301	22,119	733,562	9,775	688,403	234,644
<b>December</b>	860,740	20,082	740,198	9,009	703,610	264,241	832,853	19,206	700,810	9,853	687,212	262,401
<b>Total</b>	<b>10,750,031</b>	<b>246,682</b>	<b>8,891,203</b>	<b>144,340</b>	<b>8,635,670</b>	<b>3,177,235</b>	<b>10,929,052</b>	<b>268,377</b>	<b>9,173,124</b>	<b>127,178</b>	<b>8,364,976</b>	<b>3,229,605</b>

**Table 6: Washington-Baltimore Regional Airports Percent Change Monthly Enplanement by Destination (January - December)**

	2009/ 2010						2010 / 2011					
	BWI		DCA		IAD		BWI		DCA		IAD	
	Domestic	Inter.	Domestic	Inter.	Domestic	Inter.	Domestic	Inter.	Domestic	Inter.	Domestic	Inter.
<b>January</b>	6%	11%	0%	4%	1%	3%	1%	2%	3%	-14%	-2%	-2%
<b>February</b>	-13%	23%	-17%	-2%	-13%	-7%	21%	7%	23%	-7%	13%	12%
<b>March</b>	9%	39%	10%	22%	6%	5%	1%	0%	2%	-19%	-5%	0%
<b>April</b>	1%	17%	-1%	18%	-1%	-5%	5%	8%	5%	-19%	-3%	14%
<b>May</b>	5%	25%	2%	22%	2%	8%	6%	18%	8%	-13%	-2%	2%
<b>June</b>	9%	13%	1%	21%	3%	2%	2%	13%	6%	-15%	-5%	3%
<b>July</b>	5%	7%	-1%	21%	2%	2%	1%	21%	5%	-20%	-6%	3%
<b>August</b>	5%	19%	4%	6%	4%	-1%	-3%	15%	2%	-23%	-7%	-1%
<b>September</b>	4%	19%	7%	13%	4%	6%	2%	4%	3%	-14%	-3%	1%
<b>October</b>	6%	26%	6%	-1%	8%	5%	-3%	2%	-1%	4%	-7%	-5%
<b>November</b>	7%	17%	11%	-19%	6%	3%	-2%	14%	-5%	12%	-3%	-1%
<b>December</b>	7%	10%	12%	-16%	5%	1%	-3%	-4%	-5%	9%	-2%	-1%
<b>Total</b>	<b>4%</b>	<b>18%</b>	<b>3%</b>	<b>8%</b>	<b>2%</b>	<b>2%</b>	<b>2%</b>	<b>9%</b>	<b>3%</b>	<b>-12%</b>	<b>-3%</b>	<b>2%</b>