

Economic Trends and Commercial Construction Indicators for Metropolitan Washington

Planning Directors Technical Advisory Committee

October 17, 2008



Department of Community Planning & Services

1

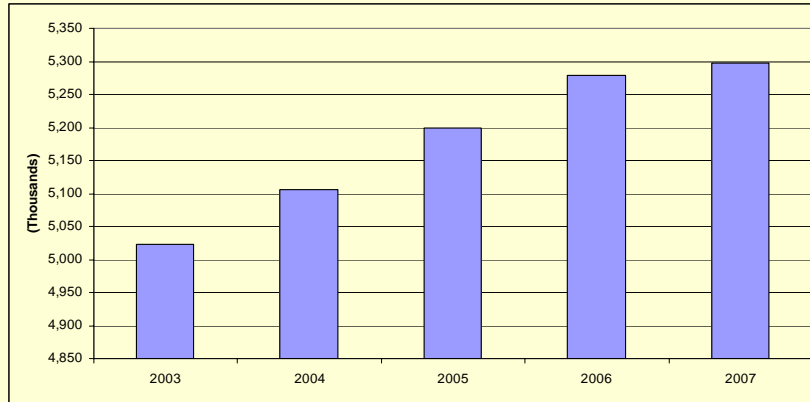
Economic Trends in Metropolitan Washington 2003 – 2007



- Population
- Employment
- Labor Force
- Construction
- Mortgage Rates, Home Sales, and Housing-Related Inflation
- Inflation
- Income
- Retail Sales
- Airline Passengers

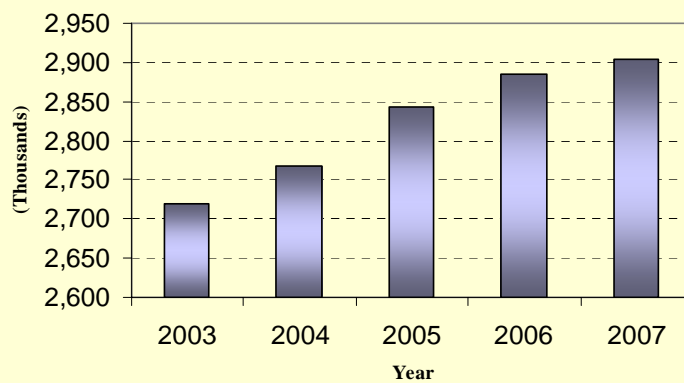
2

Economic Trends 2003 – 2007 Population Change in the Washington Region



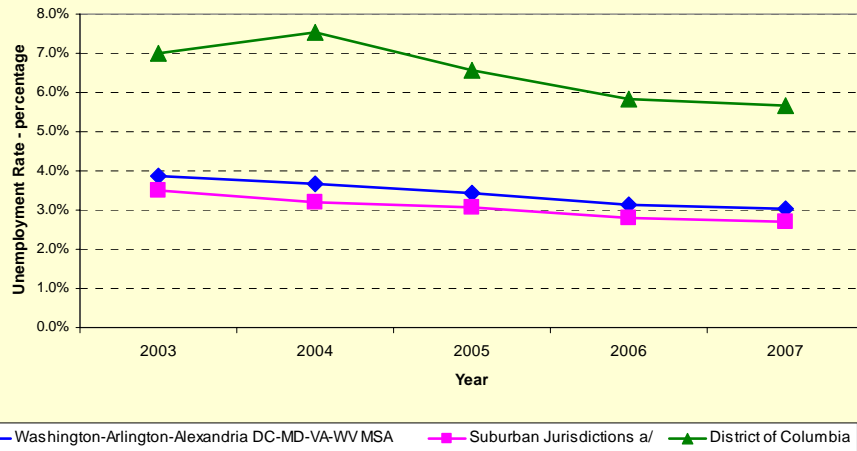
3

Economic Trends 2003 – 2007 At-Place Employment in the Washington Region

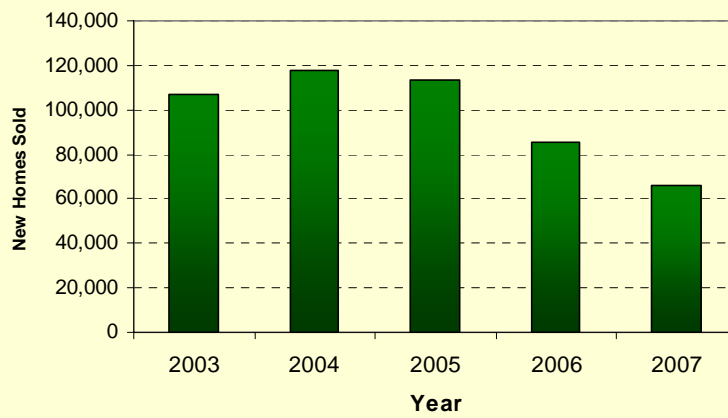


4

Economic Trends 2003 – 2007 Annual Unemployment Rate

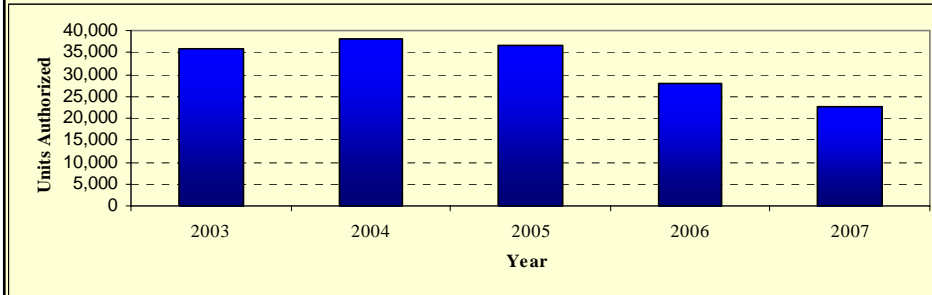


Economic Trends 2003 - 2007 Net Home Sales in the Washington Region



Economic Trends 2003 - 2007

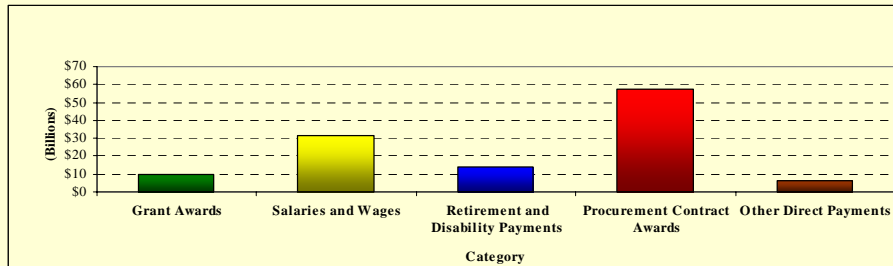
Housing Units Authorized in the Washington Region



7

Economic Trends 2003 - 2007

Federal Expenditures by Category, FY06



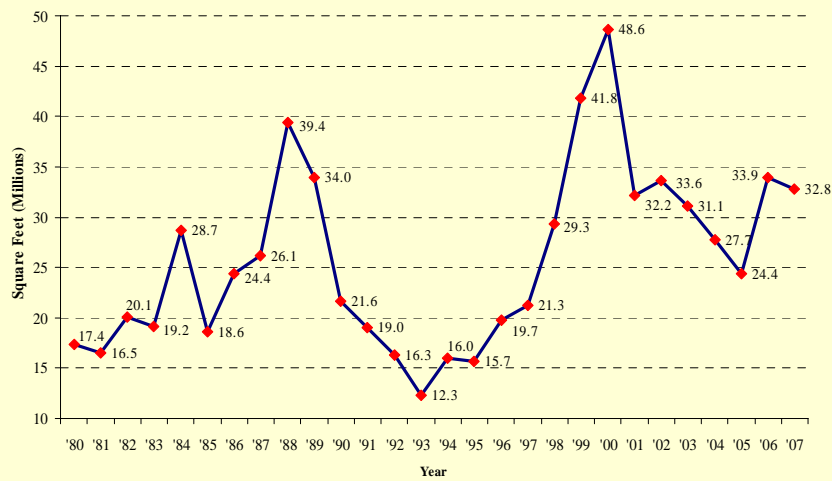
8

Commercial Construction Indicators 2007

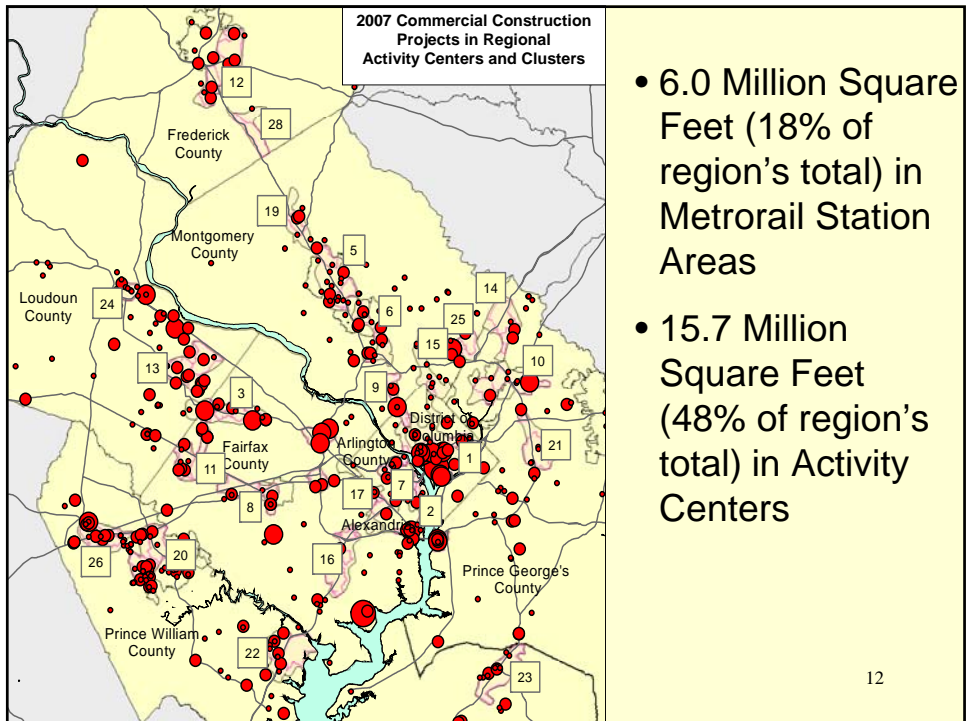
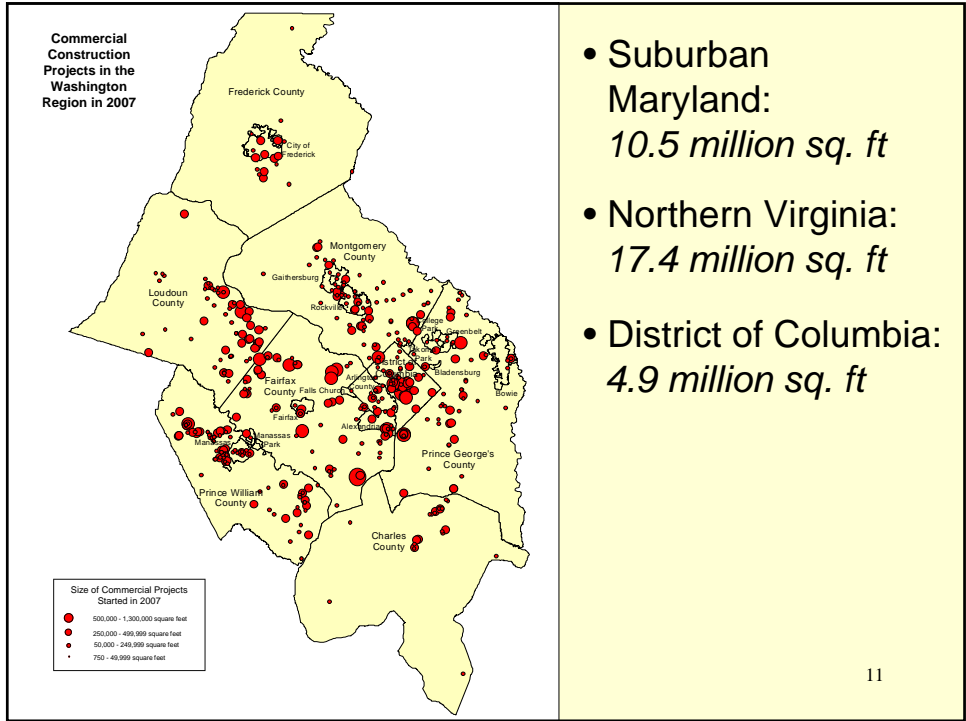
- 473 Projects
- 32.8 Million Square Feet
- \$5.7 Billion Estimated Value

9

Commercial Construction Starts 1980 to 2007 Total Square Feet



10



Economic Trends in Metropolitan Washington 2003 to 2007

Trends to watch in 2007 and 2008:

- **Inflation** – fuel costs and interest rates
- **Real Estate** – Foreclosures - human services and fiscal impacts
- **Federal presence** – Federal procurement, BRAC and security-related location decisions