

Briefing on the

TPB

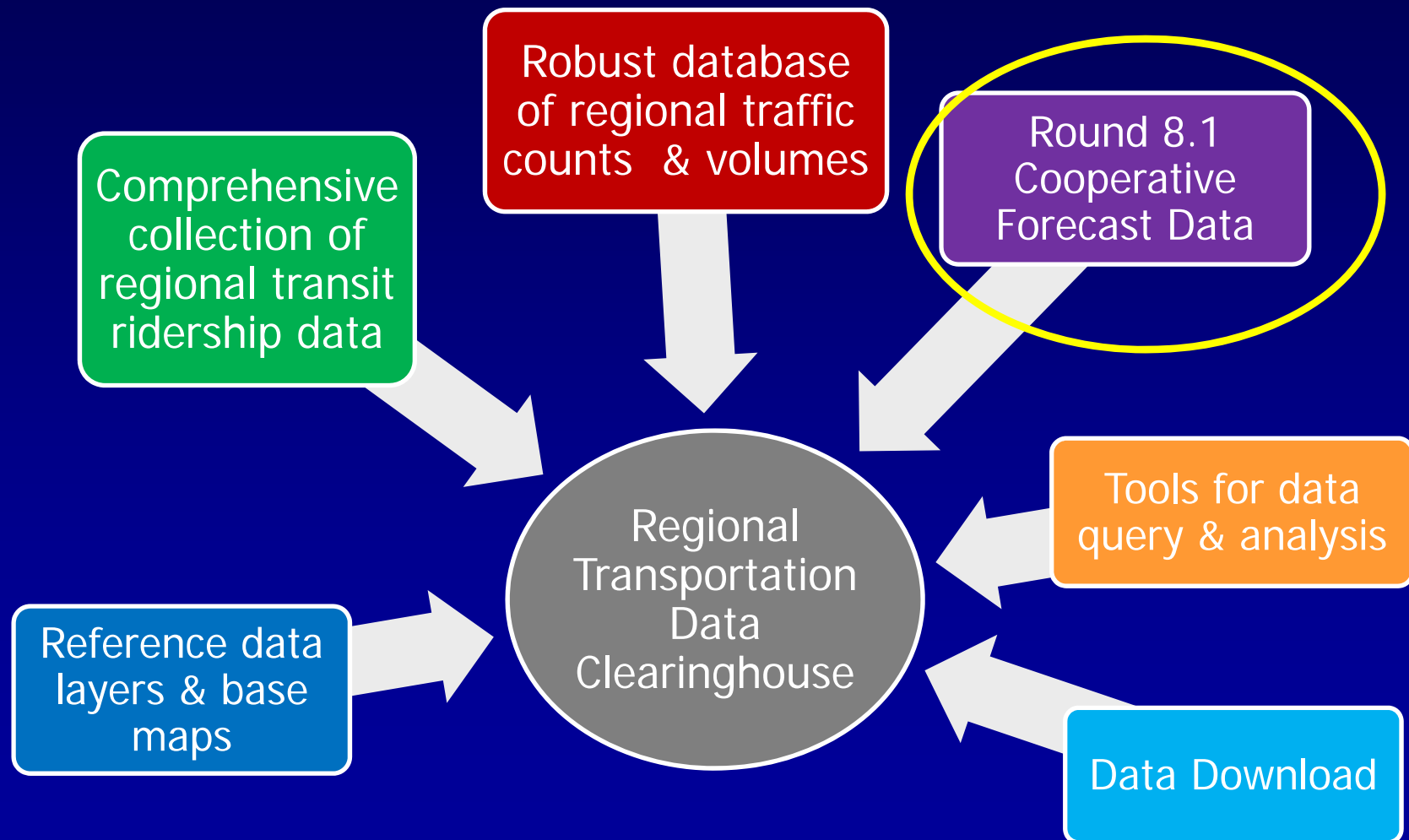
**Regional Transportation Data
Clearinghouse
(RTDC)**

Charlene Howard
TPB Staff

Cooperative Forecasting Data Subcommittee
4 June 2013

What is the RTDC?

A web-based transportation data viewer



The RTDC at a glance

Query layers & display related data tables

Perform queries & export results

Slash screen/ login with credentials

Download RTDC data for use in other applications

Improved and additional popup menus

Search Results

Relate(s)	Station ID	ANode-BNode pair	Direction of Counts	State	Available # of Counts in 2011
	B160015	2617026166	S	MD	48
	B160015	2617262168	N	MD	48

Related HourlyCountsMD Features

Station ID	Direction	Date & Time	Measured Volume of Vehicle
B160015	N	12/08/08 11:00:00	71
B160015	N	12/10/08 4:00:00	293
B160015	S	12/10/08 2:00:00	341
B160015	S	12/10/08 7:00:00	254
B160015	S	07/12/11 11:00:00	315
B160015	S	07/12/11 4:00:00	173
B160015	N	12/10/08 11:00:00	258
B160015	N	12/10/08 4:00:00	108
B160015	N	07/13/11 10:00:00	252

Query Data

Households 200	Population 2005	Employment
293	762	63
551	1434	271
885	2277	612
1913	2360	347
722	1665	574
511	1444	97
25	75	119
182	413	540
529	520	4603

Download Data by County

Feature Format: File Geodatabase - GDB - .gdb

Layers to Clip:

- Metro Stations - Entries
- Metro Lines
- Hourly Traffic Counts
- Annualized Traffic Volumes
- Transit - Avg. Weekday Ridership
- Screenlines
- Activity Centers
- Activity Clusters
- Round 8.1 Coop Forecast Data
- TPB Modeled Area
- TPB Member Jurisdictions
- MWCOC Members

Counties: District of Columbia

Submit

Sign In

Please sign in to access RTDC data at gis.mwcog.org

Username: _____

Password: _____

Click to Log In

Download Data

- Download Data by County
- Download Hourly Count Tables

Popup Menu

Name/Route = Clara Barton Pkwy GV0006

Station number: B150077

Route Name: Clara Barton Pkwy

Route ID: GV0006

Facility Type: Freeway

Jurisdiction: Montgomery County

2005 AADT: 10,838

AAWT: 11,738

Count Type: Volume from a program count done in the current year

2005 AADT: 10,838

AAWT: 11,738

Components of the RTDC

Widgets- the tools that provide application functionality

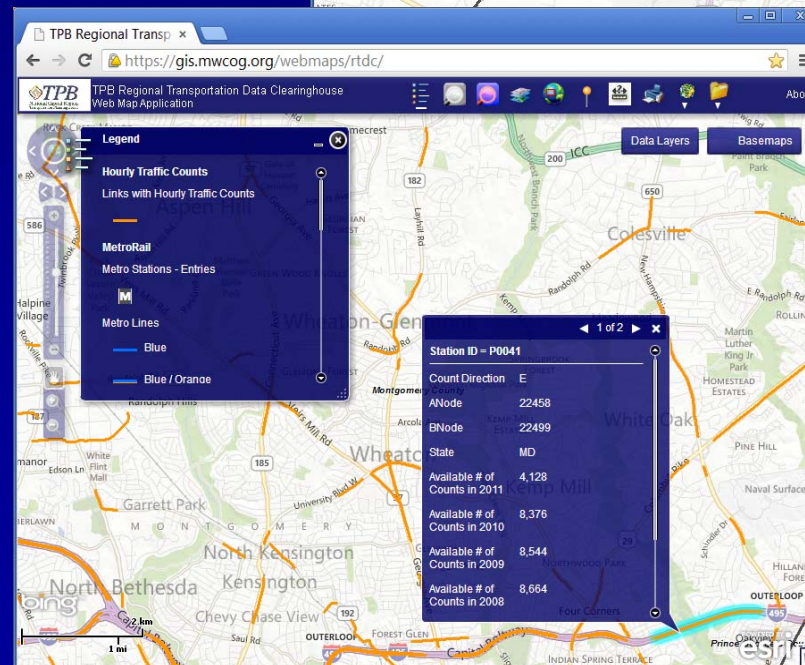
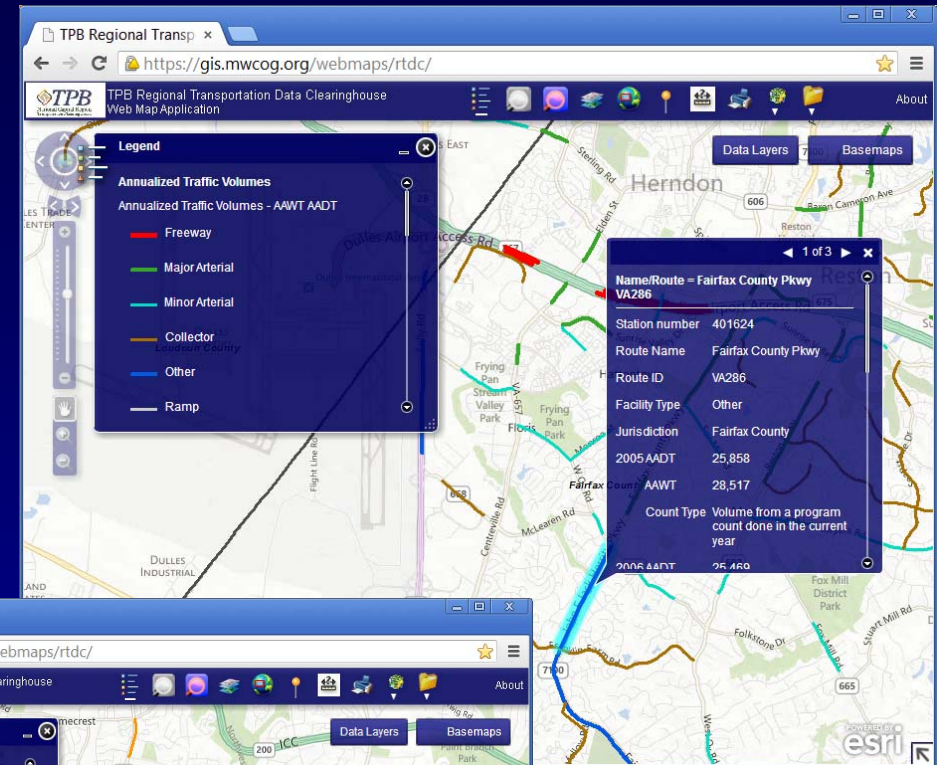
- Query ('select by attribute')
- Advanced Query- show related data tables
- Download Data
- Documents (User's Guide)
- General
 - Legend – show symbology for data layers
 - Zoom to Jurisdictions
 - Find an Address
 - Draw and Measure
 - Print

Available data layers

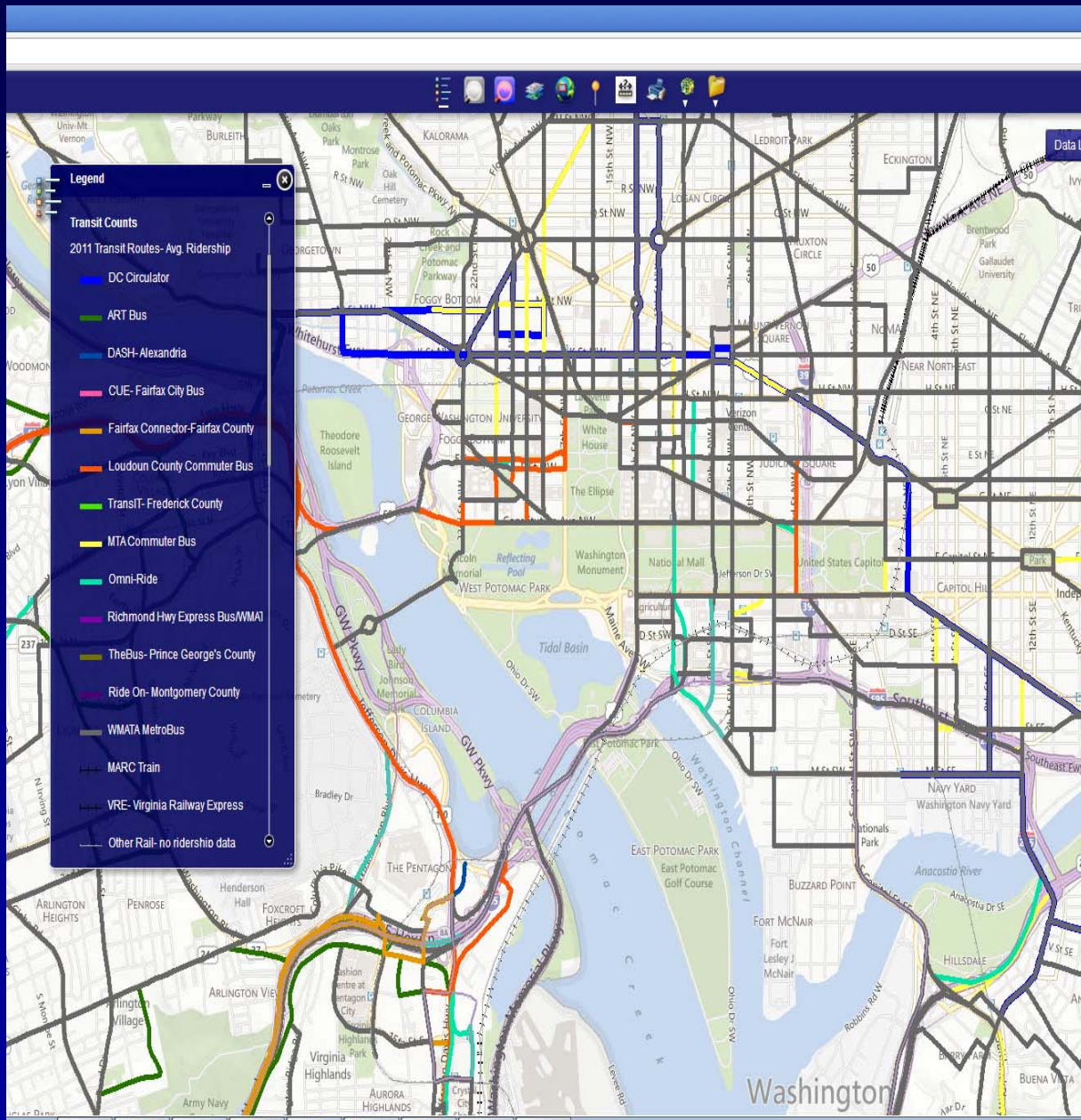
- Highway network (traffic related)
 - Annualized Annual Volumes
 - AADT
 - AAWDT
 - Hourly Traffic Counts
- Transit Routes- Average Ridership
- WMATA
 - Metro Stations
 - Metro Lines
- **Round 8.1 Cooperative Forecast by TAZ**
- Version 2.3 Screenlines
- Activity Centers & Clusters (Round 7)
- Regional Boundaries

Highlights- Traffic Counts/Volumes

- Improved traffic count/volume information for TPB regional highway network links
- Updated Annualized Traffic Volumes layer to include 2005-2011 data
- Updated Hourly Traffic Counts layer to include 2008-2011 data
- Utilized TPB highway network (dual link) for counts layers
- Added 2.3 version traffic screenlines



Highlights- Transit ridership data

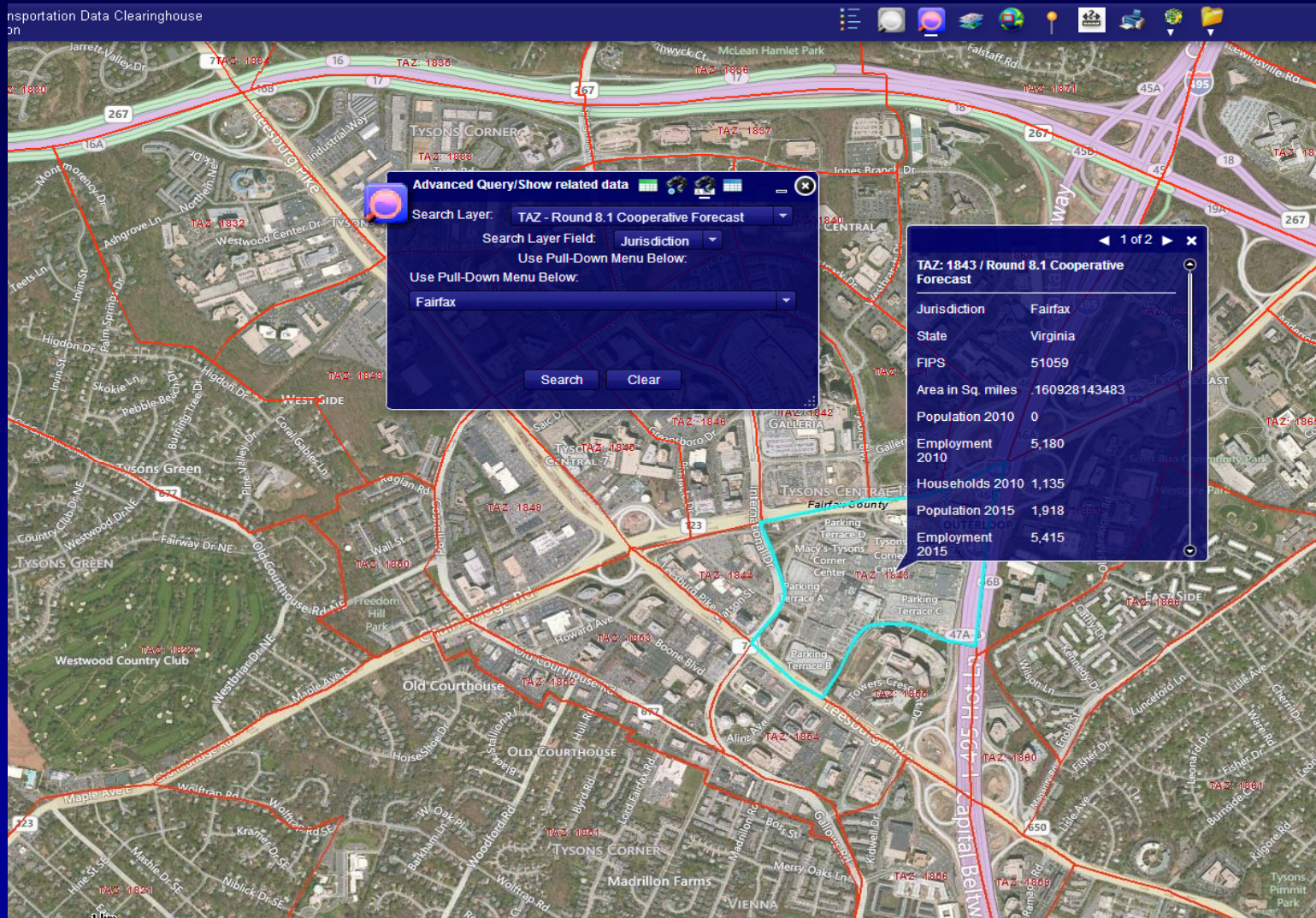


New & existing transit ridership data joined to the 2011 year TPB regional transit network.

Improvements include

- Added DC Circulator routes and ridership data
- Added CUE ridership data
- Added REX routes and ridership data
- Monthly ridership totals through September 2012 (where available)

Highlights- Cooperative Forecast



- Round 8.1 Cooperative Forecast land use data by Transportation Analysis Zone (TAZ)

Demonstration

Looking ahead

- Currently the RTDC team is focusing on application improvements and refinements
 - Updating the application to be compatible with the current version of the ArcGIS Viewer for Flex
 - Corrections and adjustments to current datasets in RTDC
- Longer term improvements
 - Data: update current RTDC layers with current data as it becomes available
 - Round 8.2 Cooperative Forecast
 - New Regional Activity Centers (points) and their respective equivalent geographic boundaries
 - Data: additional datasets- what can we add to the RTDC?
 - WMATA data: Metro entry/exit; other survey datasets
 - Capital Bikeshare
 - Application: additional ways to access the data via the interface

The RTDC team

Charlene Howard

John Kent

Martha Kile

Nicole McCall

Yew Yuan

**For more questions or comments regarding data,
please contact**

Charlene Howard

Principal GIS Analyst

202/ 962.3384

charlene@mwcog.org

<https://gis.mwcog.org/webmaps/rtdc>