



Angela D. Alsobrooks  
County Executive



# Suitland Silver Hill Access Study

## Pedestrian and Bike Access Improvements

**Nima Upadhyay**  
**Special Projects Manager**  
Prince George's County  
Department of Public Works & Transportation  
11/15/2022

SUITLAND - SILVER HILL  
PEDESTRIAN AND BIKE  
ACCESS IMPROVEMENTS



Michael D. Johnson, P.E.  
Director







Angela D. Alsobrooks  
County Executive

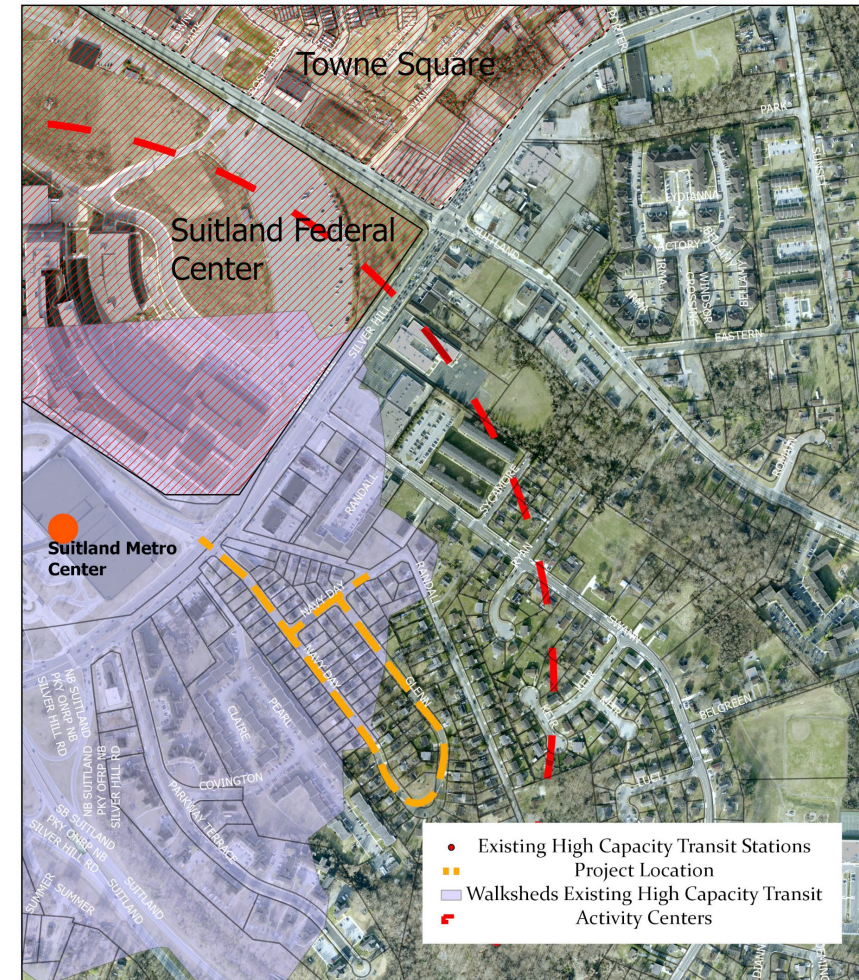
# Project Area



Michael D. Johnson, P.E.  
Director

- The project area is within the walkshed of the Suitland Metro Station
- An area with high redevelopment potential
- Redevelopment Authority of Prince George's County (RDA) is planning TOD development and affordable housing within the project vicinity
- The project is located within MWCOCG Equity Emphasis Area
- The project is funded through the MWCOCG Transit Within Reach Grant

PROJECT AREA MAP SHOWING HIGH-CAPACITY TRANSIT STATIONS AND ACTIVITY CENTERS







Angela D. Alsobrooks  
County Executive

# Introduction



Michael D. Johnson, P.E.  
Director

The goal of the project is to enhance the safety and comfort conditions for residents to connect with the established transit network as well as nearby office, retail, commercial, and residential spaces within the project limits.



Enhance Access to Public Transit

- Suitland Metro Station
- 2 Metro Bus Stops



- Improve Pedestrian and Bike Facilities

**The segment of Silver Hill Road is in the Vision Zero High Injury Network**







Angela D. Alsobrooks  
County Executive

# Existing Conditions



Michael D. Johnson, P.E.  
Director



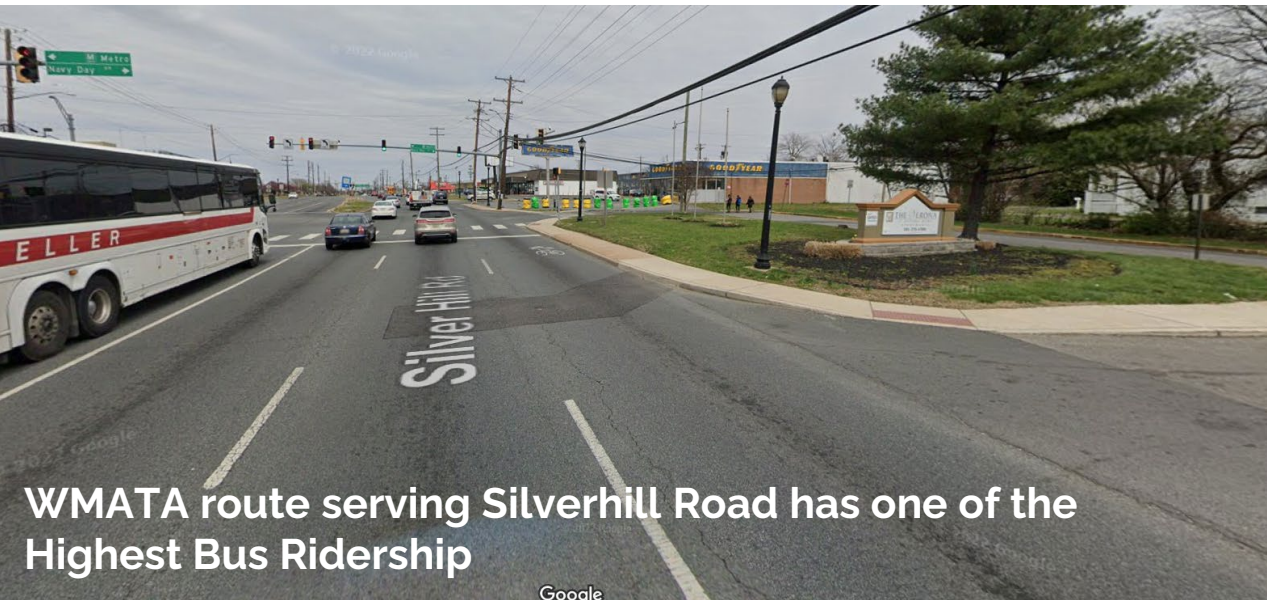
Long Intersection  
with no Refuse Island



Right turn slip lanes



No Sidewalk



WMATA route serving Silverhill Road has one of the  
Highest Bus Ridership

Google



No sidewalk







Angela D. Alsobrooks  
County Executive

# Project Detail



Michael D. Johnson, P.E.  
Director

- The project has two main objectives:
  - To improve Pedestrian and Bike facilities within the Navy Day Drive and Glen Drive Neighborhood
  - Improve safety along Silver Hill Road to provide safe access to Suitland Metro Station

## Navy Day Drive and Glen Drive Neighborhood

- Conducted a public meeting to go over the two design alternatives
- Set up a website describing both alternatives
- Preferred option was Option 2 with sidewalk and traffic calming measures and pavement art**



Link to the [design options](https://storymaps.arcgis.com/stories/e353050f841c44ff96f3c6266516478b):

<https://storymaps.arcgis.com/stories/e353050f841c44ff96f3c6266516478b>



One-way traffic south of Navy Day Place with sidewalk on inside of the loop and on-street parking on the opposite side of the road. Traffic calming at key locations and additional green areas for potential landscaping are provided.



Angela D. Alsobrooks  
County Executive

# Project Detail



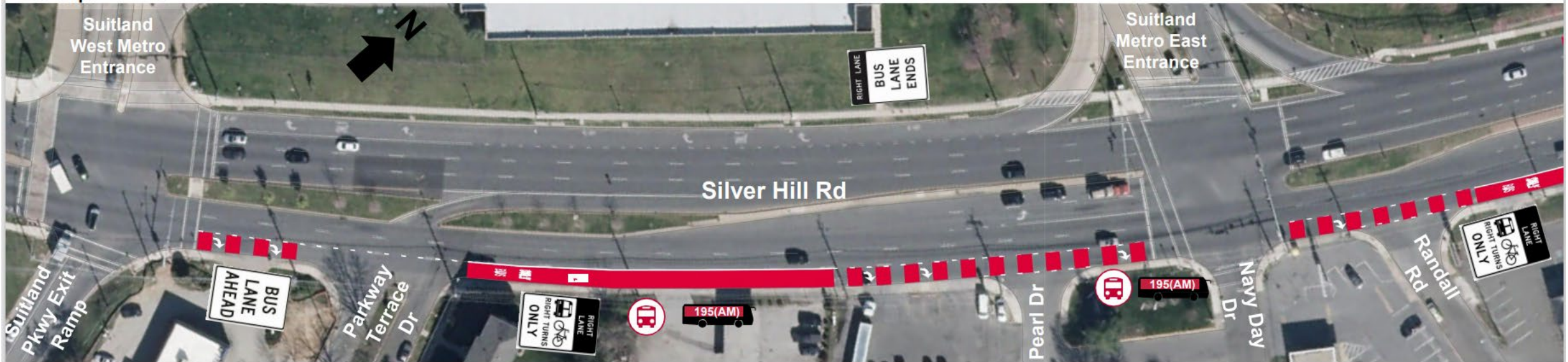
Michael D. Johnson, P.E.  
Director

- Improve safety along Silver Hill Road to provide access to Suitland Metro Station

## Improvement along Silver Hill Road

WMATA's Tactical Bus Lane Project Along Silver Hill Road:

Concept Plan View



[Link](https://wmata.com/initiatives/strategic-plans/Bus-Lanes/upload/Silver-Hill-Rd-30-TBL-Submission-102522.pdf) to WMATA Project: <https://wmata.com/initiatives/strategic-plans/Bus-Lanes/upload/Silver-Hill-Rd-30-TBL-Submission-102522.pdf>





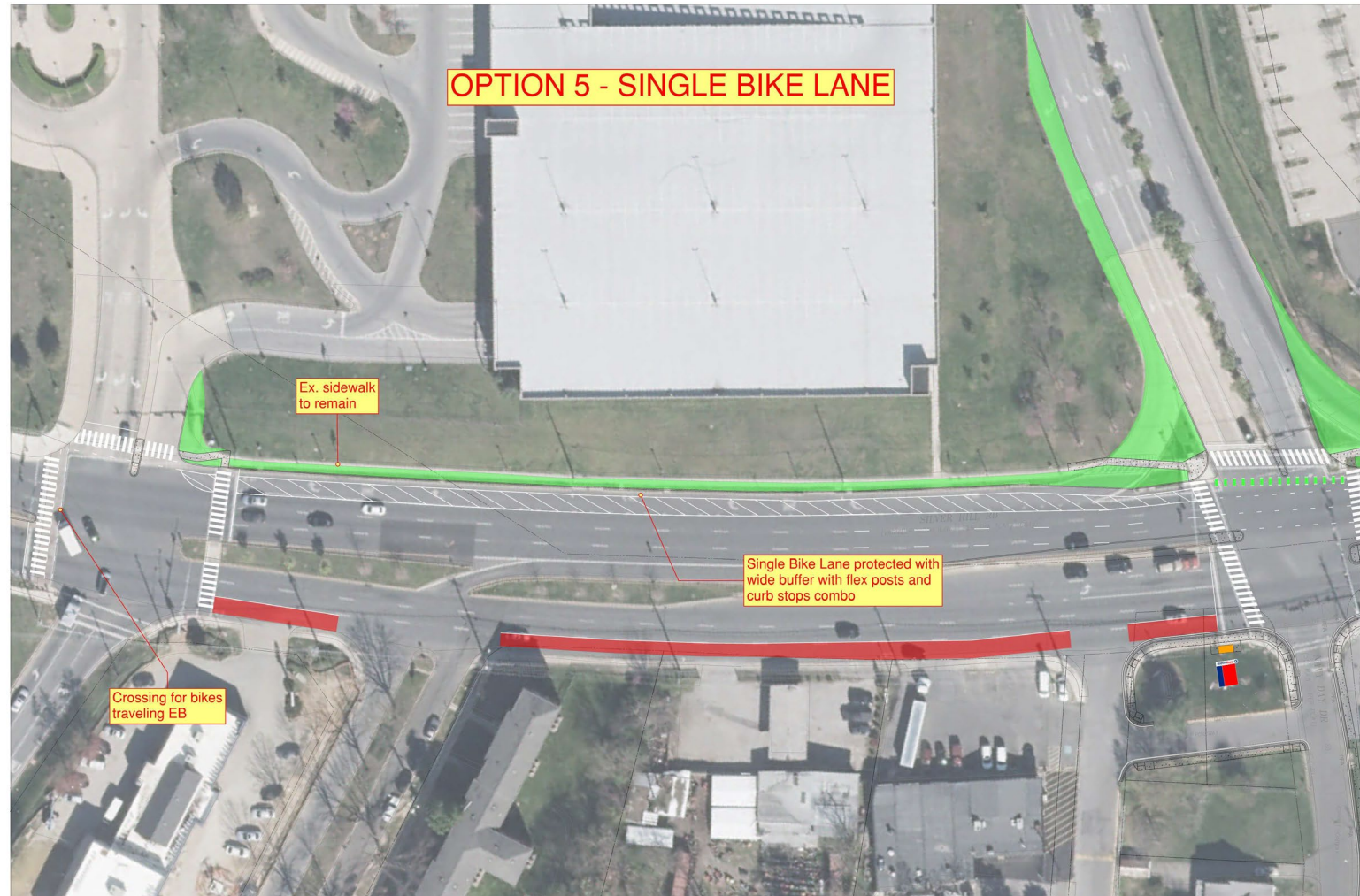
Angela D. Alsobrooks  
County Executive

# Project Detail



Michael D. Johnson, P.E.  
Director

- WMATA proposed Bus/Bike Lane projects accommodates bike traffic on Eastern side
- For, western side, currently reviewing the design option for a protected bike lane
- The design will have to be reviewed and approved by MDOT District 3 team





Angela D. Alsobrooks  
County Executive

# Project Timeline and Constrains



Michael D. Johnson, P.E.  
Director

## Timeline

The 30% project design is expected to be complete by the end of December 2022.

## Constraints:

- Silver Hill Road is a State Maintained Roadway and will require coordination with MDOT for any change in design.
- Coordination with WMATA on their Tactical Bus Lane project
- Funding for Project Construction will have to be identified, possibly grant funding





Angela D. Alsobrooks  
County Executive



Michael D. Johnson, P.E.  
Director

# Questions?

Nima Upadhyay

Prince George's County

Department of Public Works & Transportation

[nupadhyay@co.pg.md.us](mailto:nupadhyay@co.pg.md.us)