



MDOT'S POLICY, FUNDING, & PRIORITIZATION PROCESS

SEPTEMBER 14, 2023

TPB Community Advisory Committee

presented by: Kari Snyder, Regional Planner

Maryland Department of Transportation
Office of Planning and Capital Programming

MDOT POLICY FRAMEWORK

- 2040 Maryland Transportation Plan (MTP): 20-year mission document for a balanced, multimodal approach to transportation planning
 - This shapes our transportation priorities and is updated every 5 years.
 - Shaped by Goals, Objectives, and Performance Measures
 - Robust public involvement and feedback process at the front end with the MTP and the back end with the Attainment Report
- Existing MDOT 2040 MTP Goals
 - Ensure a **Safe, Secure, and Resilient** Transportation System
 - Facilitate **Economic Opportunity and Reduce Congestion** in Maryland through Strategic System Expansion
 - **Maintain a High Standard** and Modernize Maryland's Multimodal Transportation System
 - Improve the **Quality and Efficiency** of the Transportation System to Enhance the Customer Experience
 - Ensure **Environmental Protection** and Sensitivity
 - Promote **Fiscal Responsibility**
 - Provide Better Transportation **Choices and Connections**

2050 MARYLAND TRANSPORTATION PLAN UPDATE

2040 vs 2050 Goals:

- **Safety & Security**

- Existing GOAL: Ensure a Safe, Secure, and Resilient Transportation System

- **System Quality**

- Existing GOAL: Facilitate Economic Opportunity and Reduce Congestion in Maryland through Strategic System Expansion
- Existing GOAL: Maintain a High Standard and Modernize Maryland's Multimodal Transportation System
- Existing GOAL: Improve the Quality and Efficiency of the Transportation System to Enhance the Customer Experience (also contained in Customer Experience guideline)
- Existing GOAL: Provide Better Transportation Choices and Connections

- **Environmental Protection**

- Existing GOAL: Ensure Environmental Protection and Sensitivity

- **Management**

- Existing GOAL: Promote Fiscal Responsibility

2050 PROPOSED GUIDING PRINCIPLES

Guiding Principles are concepts that will guide the Department in our decision making to support the goals.

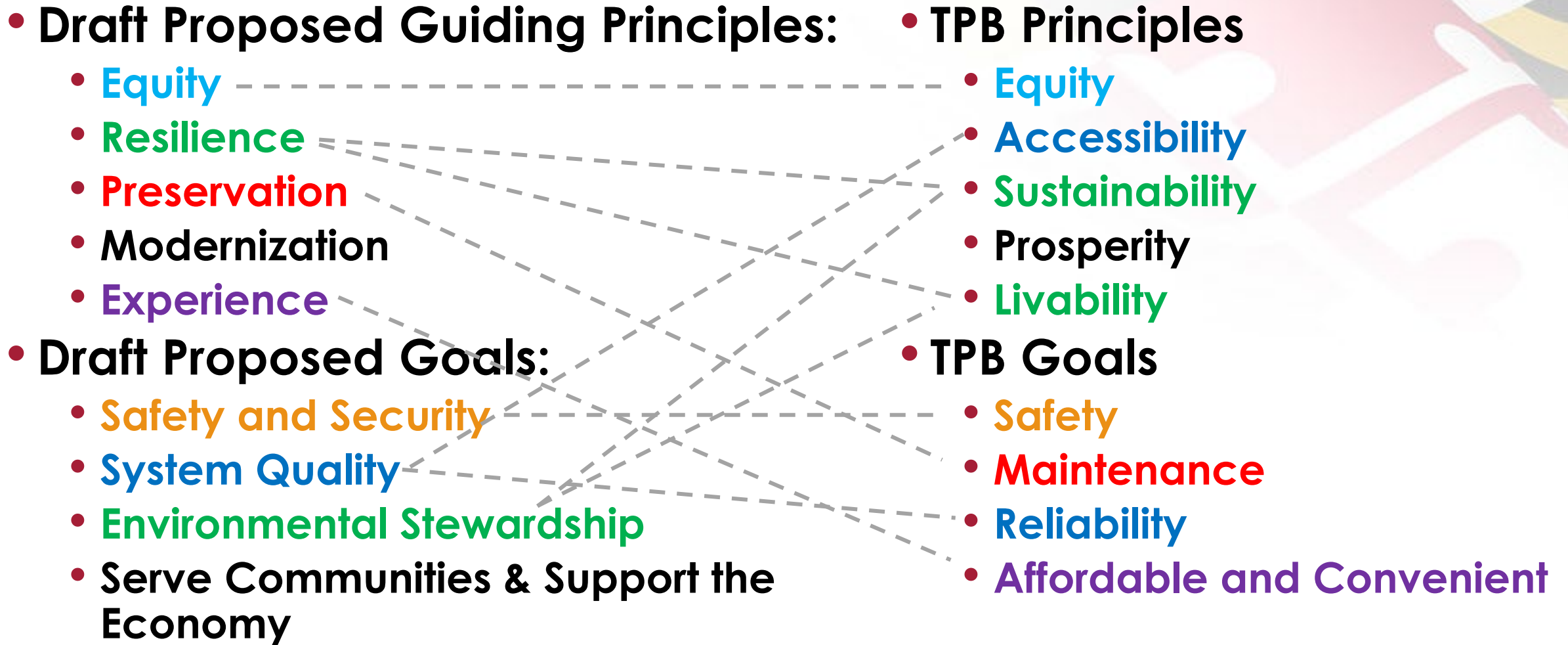
- **Equity:** Integrate equity considerations in all aspects of transportation planning, programming, and operational processes.
- **Preservation:** Preserve the condition of the existing transportation system assets to provide safe and efficient movement.
- **Resilience:** Improve the transportation system's ability to provide reliable service throughout natural weather events and man-made threats.
- **Modernization:** Transform the transportation system by using proven technological improvements and exploring innovative new ideas.
- **Experience:** Improve the experience of all transportation system users.

2050 PROPOSED GOALS

Goals show, at the highest level, what MDOT plans to do in the next five years, 20 years, and beyond.

- **Enhance Safety and Security:** By protecting the safety of all residents, workers, and visitors, we will achieve zero traffic related fatalities and serious injuries.
- **Deliver System Quality:** By investing to achieve system quality, we will create an infrastructure program that is financially sustainable, environmentally resilient, and in a state of good repair.
- **Serve Communities and Support the Economy:** By expanding transportation options to allow Maryland's diverse communities to access opportunities and to support the movement of goods, we will expand transit and active transportation use, and bolster the regional economy.
- **Promote Environmental Stewardship:** By minimizing and mitigating the environmental effects of transportation, we will achieve a 20% reduction in vehicle-miles traveled per capita, a 40% reduction in transportation sector GHG emissions by 2031 and move towards net-zero by 2045.

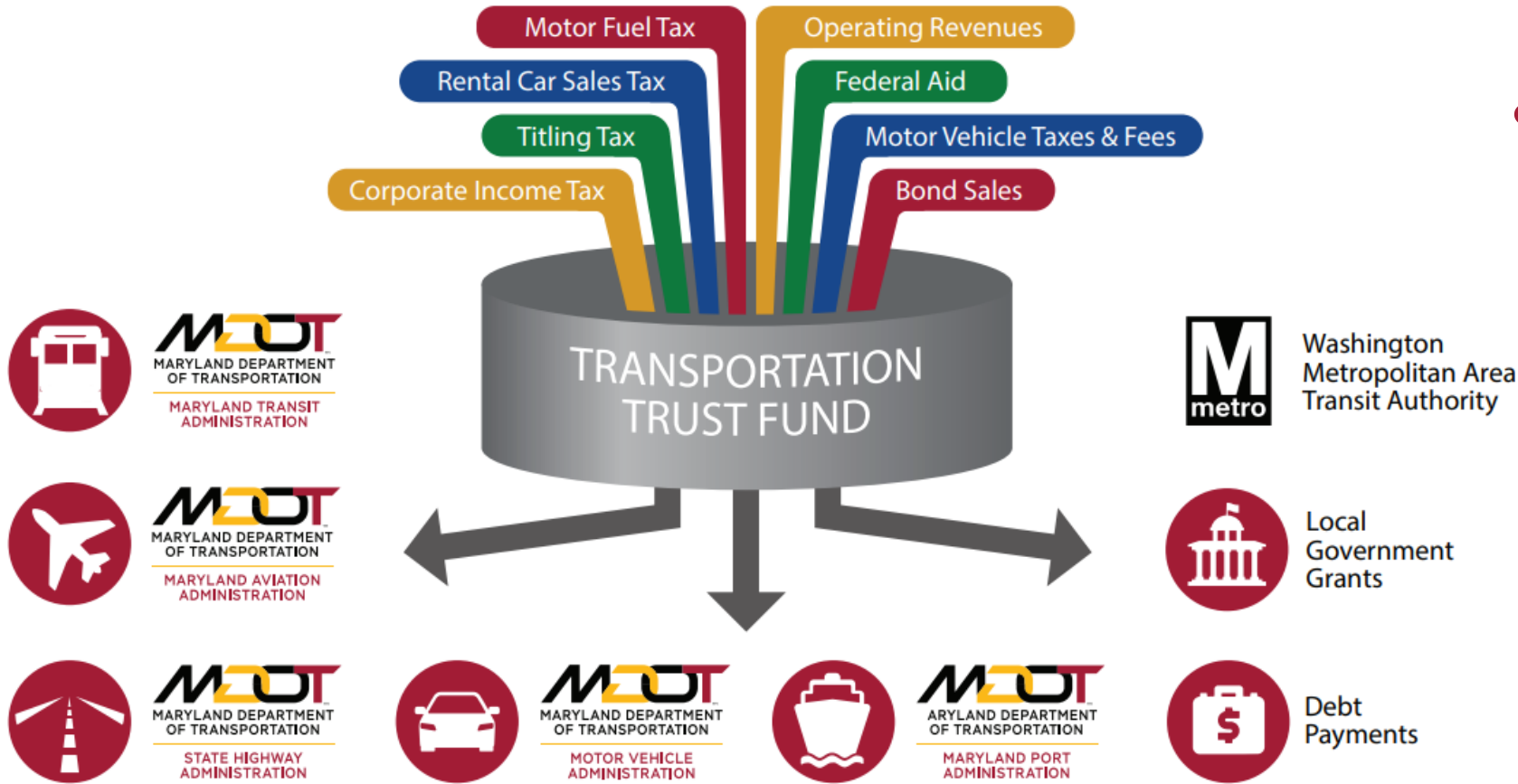
MDOT & TPB POLICY CORRELATION



TRANSPORTATION FUNDING & THE CTP

- The Consolidated Transportation Program (CTP) is MDOT's fiscally constrained **6-year capital budget**
 - Contains all State major and minor transportation projects.
- The CTP is presented annually by the Governor and approved by the Maryland General Assembly's budget process
- Modal Administrations Needs Assessments
 - SHA, MTA, MPA, MVA, MAA, & MDTA
- **Public involvement and feedback through the County Priority Letters and the Secretary's Annual Tour**

HOW THE TRANSPORTATION TRUST FUND WORKS

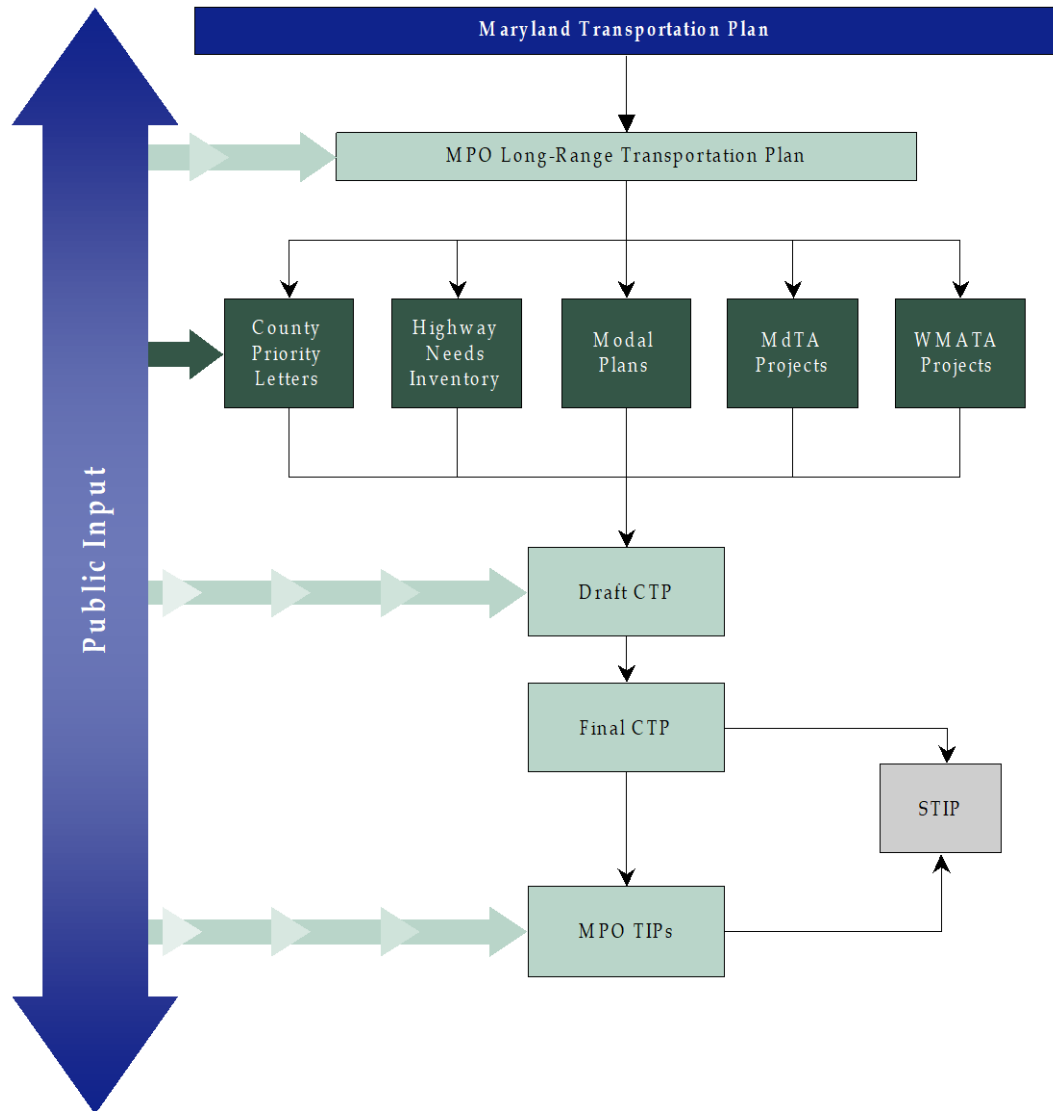


- The Transportation Trust Fund (TTF) allows transportation projects to be programmed based on when the funding is needed and available.

PRIORITY LETTERS & CHAPTER 725

- Priority letters represent each County's internal ranking of State projects deemed most important based on local need and local input. They can include:
 - Local priorities for the highway and transit systems, as well TOD sites
 - Information on project consistency with State and local plans
- Chapter 725 requires additional clarity and standards to define how MDOT evaluates and selects proposed major capital projects for inclusion in the CTP's Construction Program
 - The relationship between prioritized projects and the **long-term goals of the MTP, the Climate Action Plan Goals** (as outlined in the Greenhouse Gas Reduction Plan), and **local land use plans** must be demonstrated in this process.

PROJECT DEVELOPMENT PROCESS



- Projects are selected by a strategic decision-making process using established priorities and criteria to prioritize programs and projects.
- Projects must:
 - Meet the goals of the MTP
 - Be scored in Chapter 30
 - Be in a local Priority Letter/ consistent with local plans
 - Meet federal and legal mandates
 - Meet federal match requirements

MDOT LINKS

2040 Maryland Transportation Plan

<https://www.mdot.maryland.gov/tso/pages/Index.aspx?PageId=22>

DRAFT MDOT FY 2024-2029 CTP

[CTP.Maryland.Gov](https://www.mdot.maryland.gov/tso/pages/Index.aspx?PageId=117)

MDOT FY 2022-2025 STIP

<https://www.mdot.maryland.gov/tso/pages/Index.aspx?PageId=117>

THANK YOU

For more information:

Kari Snyder, Regional Planner

MDOT Office of Planning & Capital Programming

ksnyder3@mdot.maryland.gov

Heather Murphy, Director

MDOT Office of Planning & Capital Programming

hmurphy@mdot.maryland.gov