



COG WINTER WEATHER MEETING

Maryland Department of Transportation

State Highway Administration

Office of Maintenance

November 7, 2019

YEAR-ROUND WINTER PLANNING





WINTER PREP – SUMMER

- Update Statewide Salt Management Plan
- Finalize New Salt Contracts with DGS
- Repair/Replace Salt Structures
- Repair/Replace Brine Tanks and Components
- Repair/Replace Brine Makers
- Restock Inventory for Winter Equipment Needs



WINTER PREP – FALL

- Prepare/Finalize Hired Equipment Contracts
- Develop/Finalize Route Plans
- Re-Stock Material Supplies – Salt, Brine, Plow Blades, etc.
- Prepare State Equipment
- Host Hired Equipment Meetings
- Inspect and Calibrate Equipment – State and Hired
- Host Internal Town Meetings
- Complete Snow College for New Hires
- Complete Practice Runs and Route Inspections

WINTER EVENTS

- Monitor Weather
- Participate in Statewide Calls
- Apply Salt Brine as Warranted
- Prepare District/Statewide Plans
- Act on Plans
- Monitor Weather and Pavement Temperatures/Conditions
- Adjust Plans Appropriately
- Clean-Up
- Re-Stock Material Supplies – Salt, Brine, Plow Blades, etc.
- Inspect and Repair Equipment
- Make Roadway Repairs – Potholes
- Repeat!



WINTER CLEAN-UP – SPRING

- Assess and Repair Salt Structures
- Re-Stock Salt Supply
- Clean, Inspect, and Repair All Equipment
- Clean Brine Makers and Saddle Tanks
- Assess and Repair/Replace Brine Tanks and Components
- Assess and Repair/Replace Brine Makers
- Perform Route Inspections and Make Roadway Repairs
- Analyze Data captured from Watersheds and Stream Monitoring

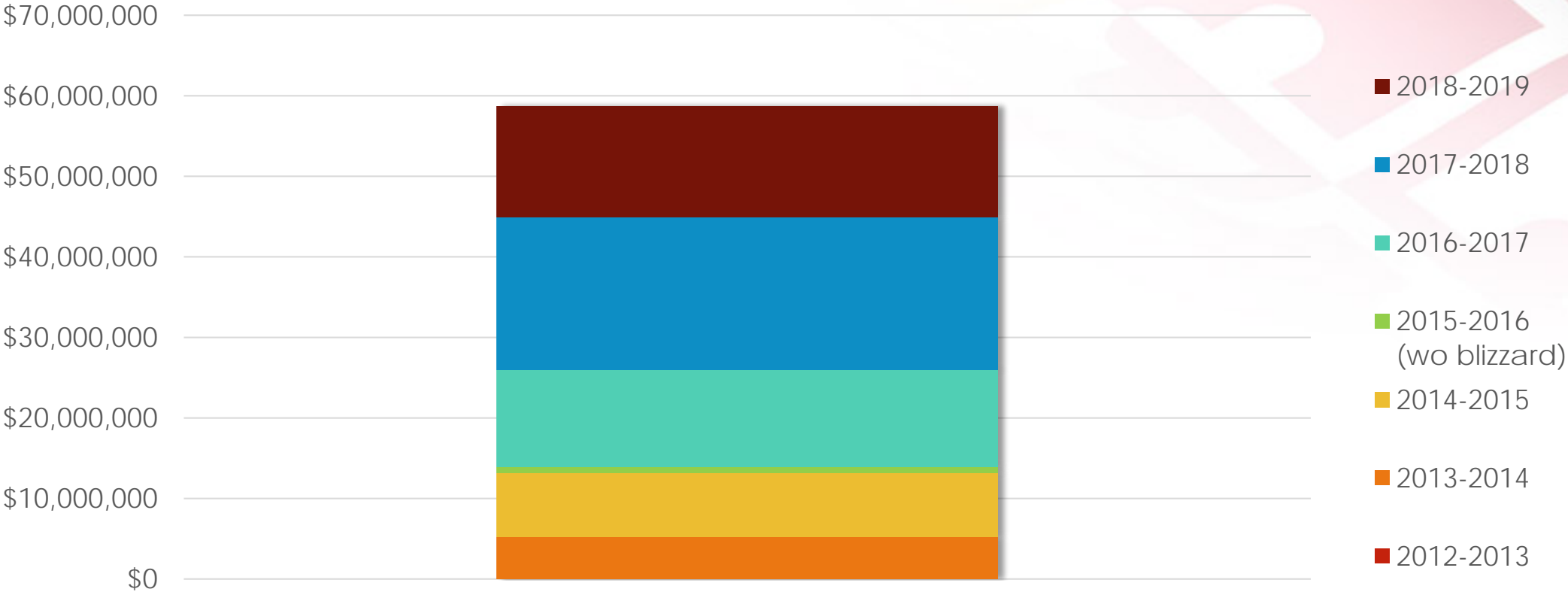


TOP ACCOMPLISHMENTS

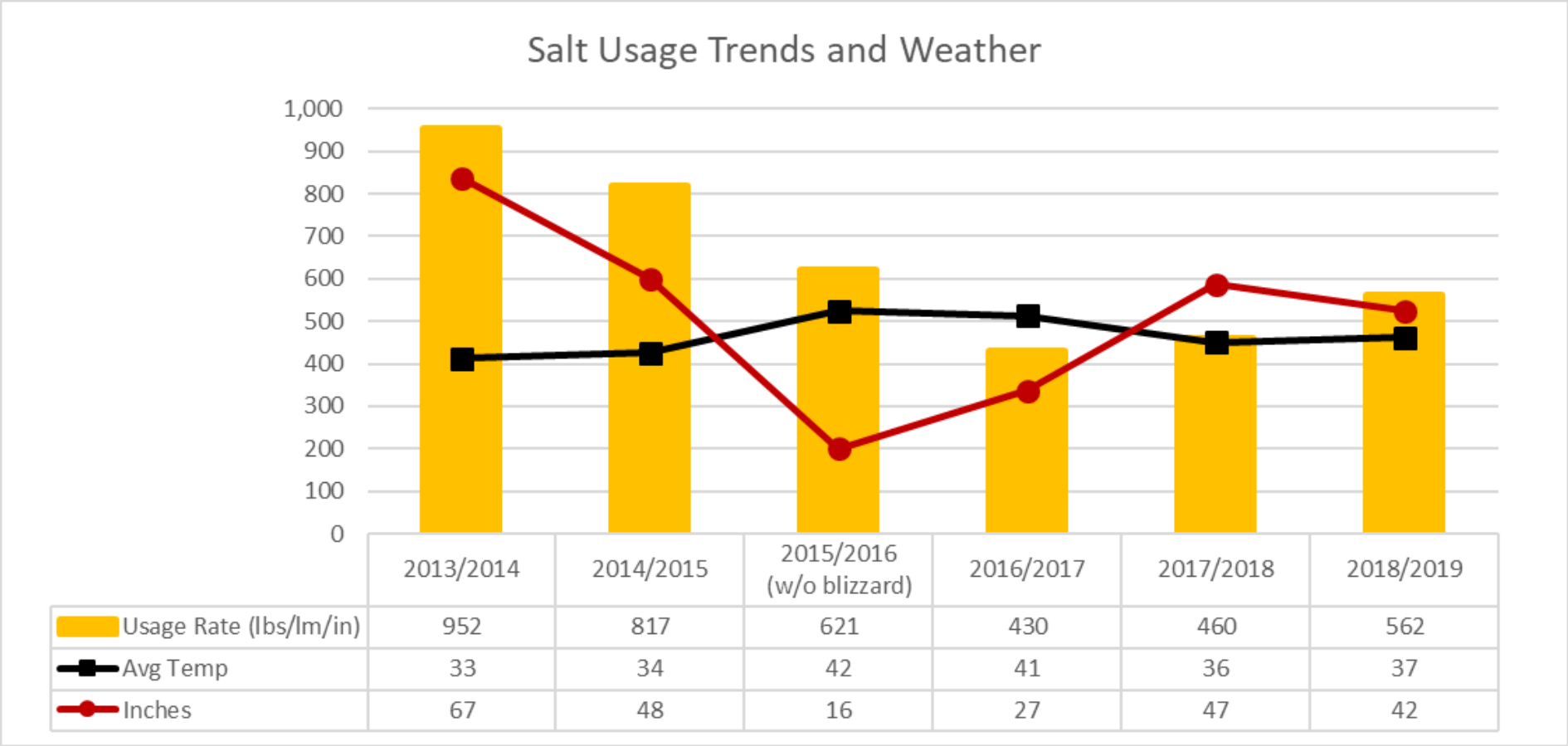
- Continued Salt Reduction Savings the past 6 Winter Seasons
- Average 2.3 Hours to Bare Pavement the past 6 Winter Seasons
- Partnered with MDE in crafting the next generation MS4 Permit



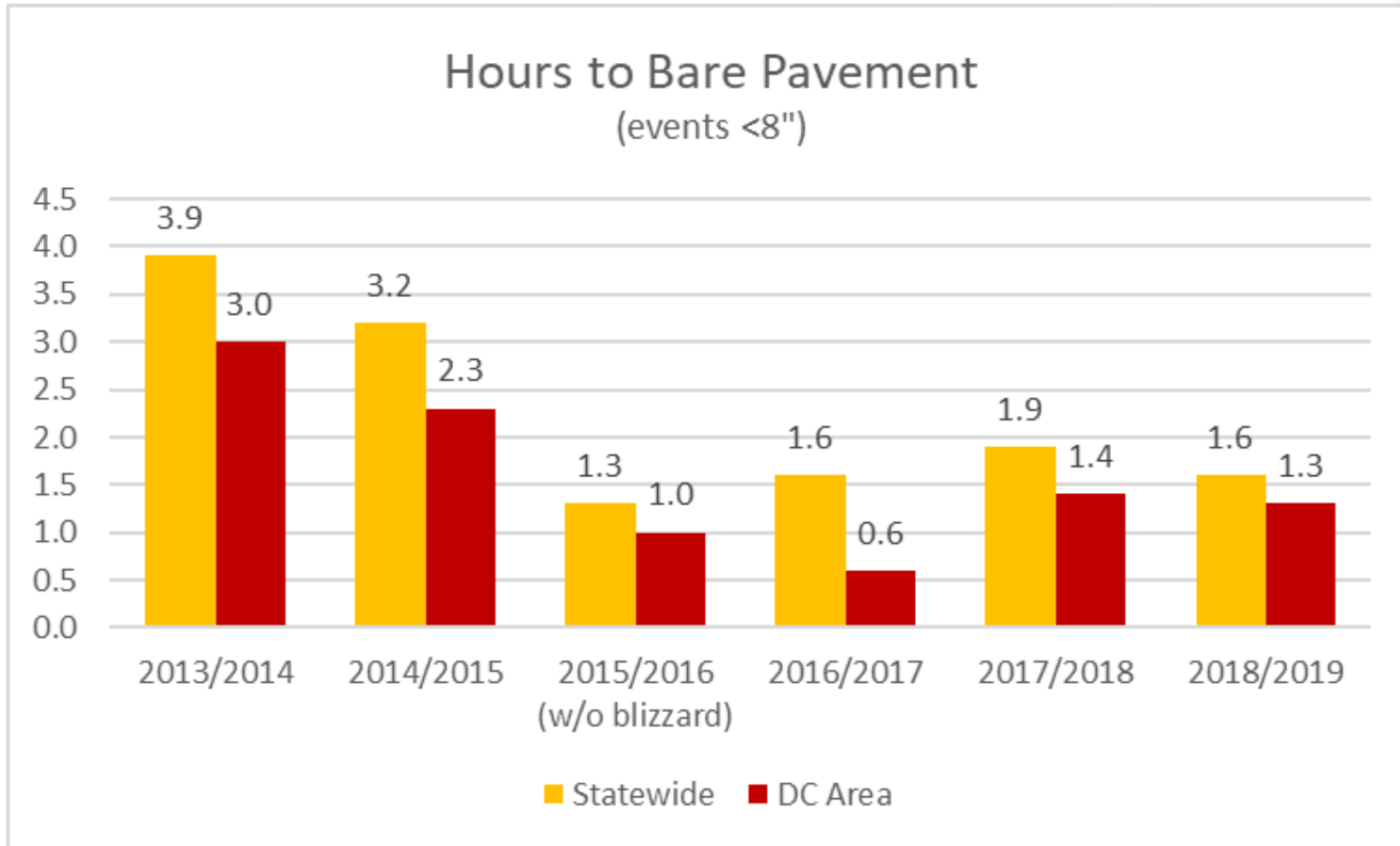
Cumulative Savings by Reducing Pounds per Lane Mile per Inch of Snow



SALT USAGE TRENDS/WEATHER



BARE PAVEMENT





SOMEWHAT NEW THIS WINTER

- New Plow Blades
- Loader Scales
- Additional Contract Anti-Icing Equipment
- Expanded Direct Liquid Application Routes
- Additional Brine Making and Storage Capacity
- MARWIS
- S.T.O.R.M. App

BRINE OPERATION

New Brine Maker



Brine Tanks



Brine Application



MARWIS



ViewMondo®

CURRENT DATA DIAGRAMS REPORT

SHA MARWIS-1
141114 (0014.1114)

- dry (0)
- damp (1)
- wet (2)
- ice (3)
- snow/ice covered (4)
- chem. wet (5)
- slush (6)
- critical (7)
- snow covered (8)

Map follows trail on data update Trail Sensor: Road Condition Luft

1/30/2018 7:48:59 AM - 1/30/2018 9:55:09 A

1/30/2018 9:51:30 AM

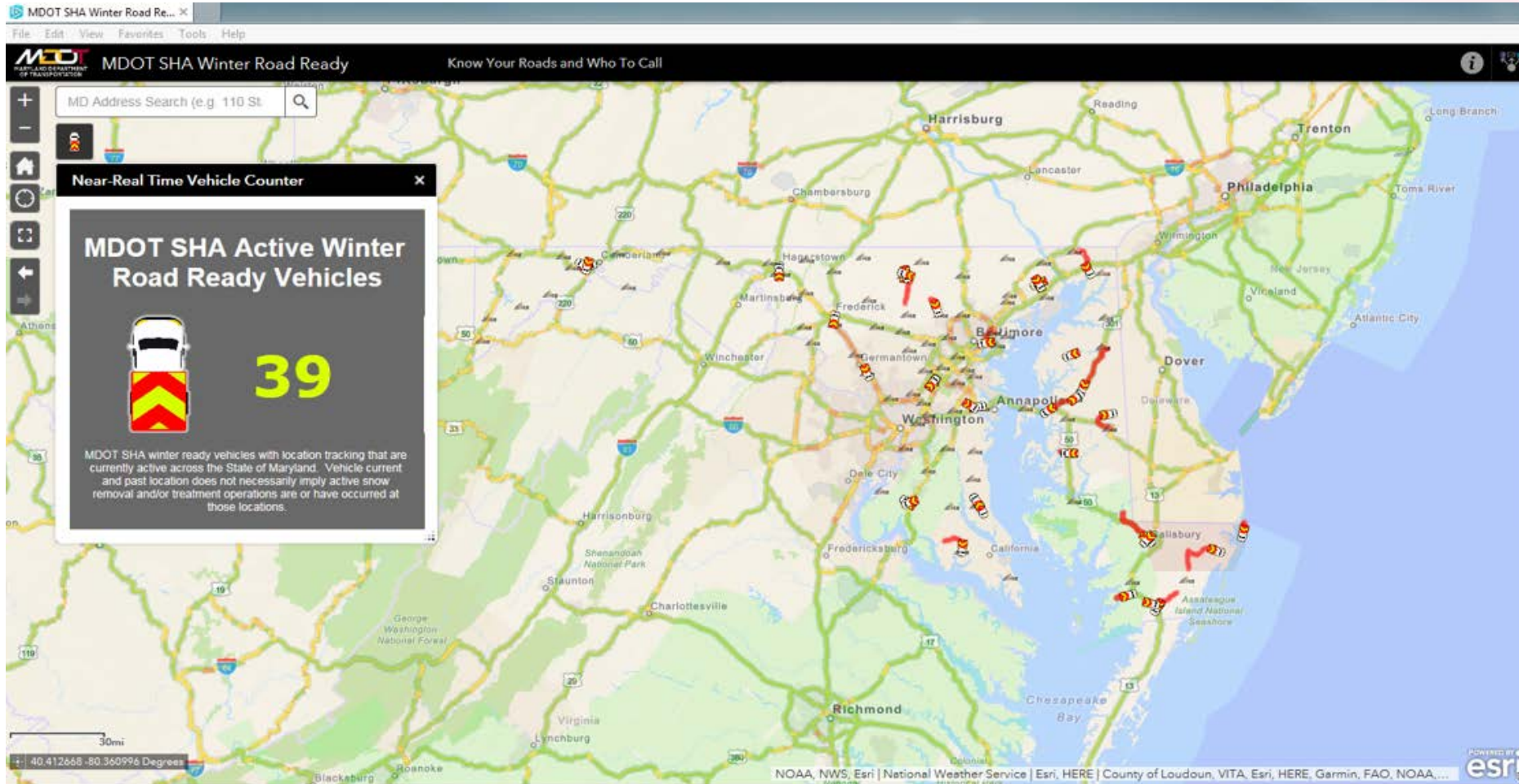
S.T.O.R.M. APP

APP

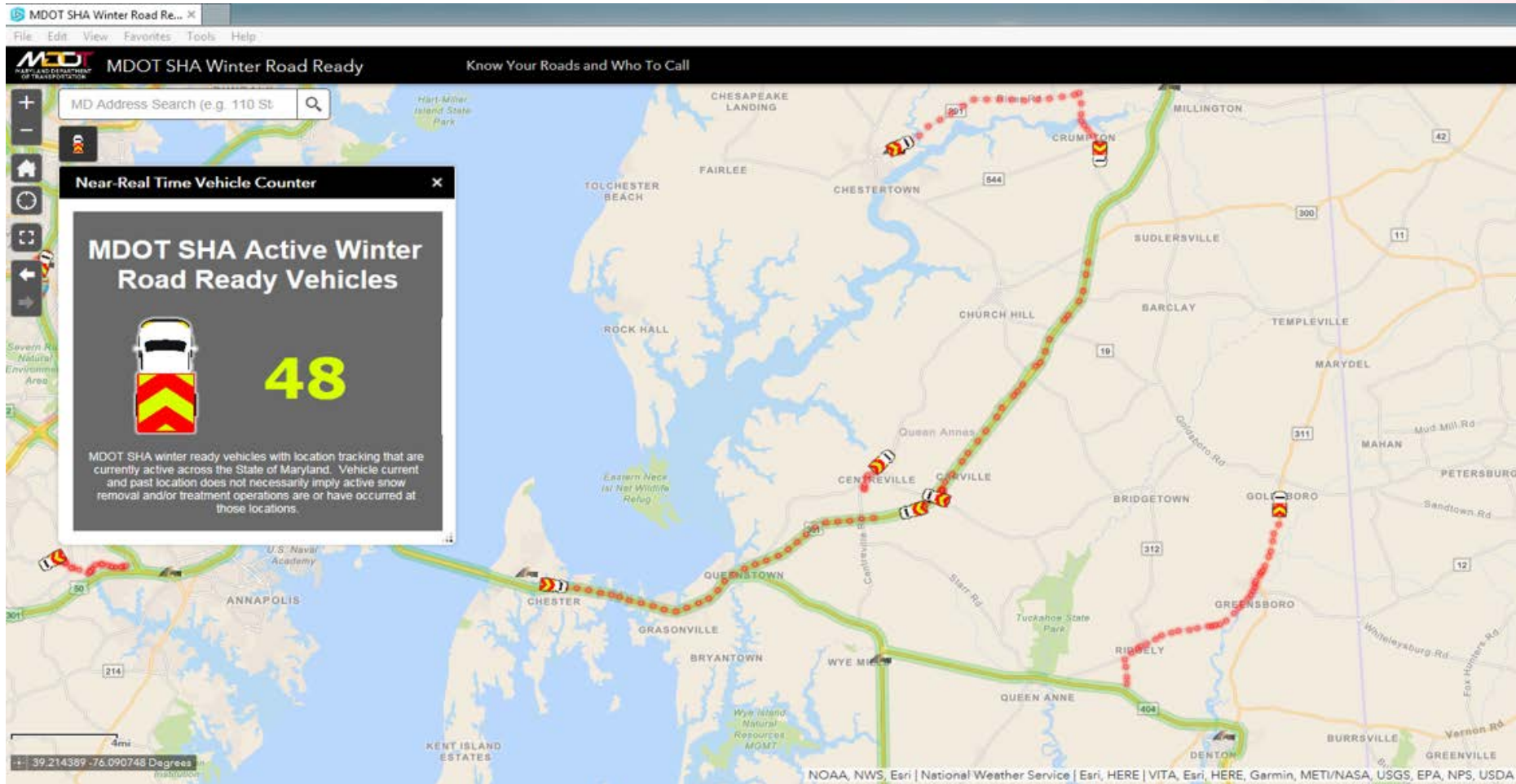


Winter Road Ready

S.T.O.R.M. – PUBLIC



S.T.O.R.M. – PUBLIC



S.T.O.R.M. – INTERNAL

MDOT SHA Winter Operations Dashboard

Dry 1150

Damp/Wet 20

Chemical Wet/Snow/Ice 00

Snow/Ice Warning 00

WPL C-506 AT GANTRY S-9
DEFAULT EB VIEW

Live Video Feed (if video is not streaming please click in frame area above to activate)

Active Snow Ops Vehicles: 410

All Active Vehicles (not including CHART): 960

MDOT
MARYLAND DEPARTMENT OF TRANSPORTATION
STATE HIGHWAY ADMINISTRATION
CHART

Incident Events

- Baltimore City:** debris on roadway @ I-95 SOUTH AT EXIT 53 I 395 CAL RIPKEN WAY (SB), (Updated: 10/12/2018, 9:25 AM)
- Anne Arundel:** accident @ MD 258 AT MD 4, (Updated: 10/12/2018, 9:25 AM)
- Saint Marys:** incident @ MD 249 NORTH/SOUTH AT DRAYDEN RD, (Updated: 10/12/2018, 9:25 AM)
- Anne Arundel:** severe weather @ US 50 EAST/WEST AT MP 33 (BAY BRIDGE)PHASE 1 WIND WARNINGS, (Updated: 10/12/2018, 9:25 AM)
- Baltimore City:** incident @ I-695 INNER LOOP/OUTER LOOP AT MP 49.3 (FRANCIS SCOTT KEY) BRIDGE PHASE 1 WIND WARNINGS, (Updated: 10/12/2018, 9:25 AM)
- Anne Arundel:** flooding @ MD 450 EASTWEST AT HUNTINGWOOD DR, (Updated: 10/12/2018, 9:25 AM)