

NATIONAL CAPITAL TRAIL NETWORK

2023 Update

Michael Farrell
Senior Transportation Planner

Bicycle and Pedestrian Subcommittee
November 29, 2023



Overview of Today's Presentation

- History of the National Capital Trail Network (NCTN)
- 2023 Update
- The Revised Map
- Changes/Benefits
- Next/future steps



Mount Vernon Trail (BeyondDC, flickr.com)



What is the NCTN?

- Long-distance, continuous network of low-stress, mostly off-road bicycle and pedestrian facilities
- Accessible for all ages and abilities
- Healthy, low-stress access to open space
- Clean, inexpensive, reliable transportation
- Serves nearly all TPB Priority Areas, and most People and Jobs

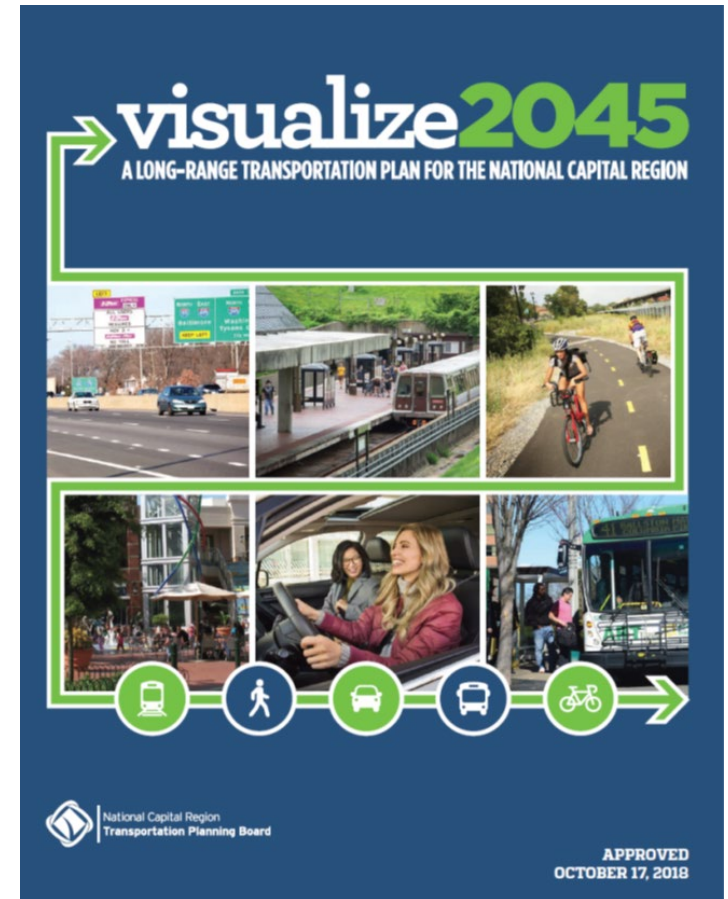


Virginia Avenue S.E.



Background and Recent Changes

- December 2018 – TPB Resolution R20-2019 directed TPB staff to build upon the National Capital Trail to create a regional trail network that would extend into all TPB jurisdictions
- July 2020 - TPB approved Resolution R5-2021, adopting the National Capital Trail Network
- 2023 – NCTN Map updated
 - Worked with Bike/Ped Subcommittee, COG GIS staff



TPB Resolution R5-2021

- Adopted the National Capital Trail Network
- Directed TPB staff to:
 - Give additional consideration to projects that will implement portions of the network for Transportation Alternatives and Transportation-Land Use Connections funding
 - Report on progress towards implementation of the network
 - Work with the TPB member jurisdictions to update the network, to reflect anticipated new agency bicycle and pedestrian plans
- Asked TPB members to prioritize projects, programs, and policies that will implement portions of the National Capital Trail Network



Proposed New National Capital Trail Network Map

NCTN Map 2023

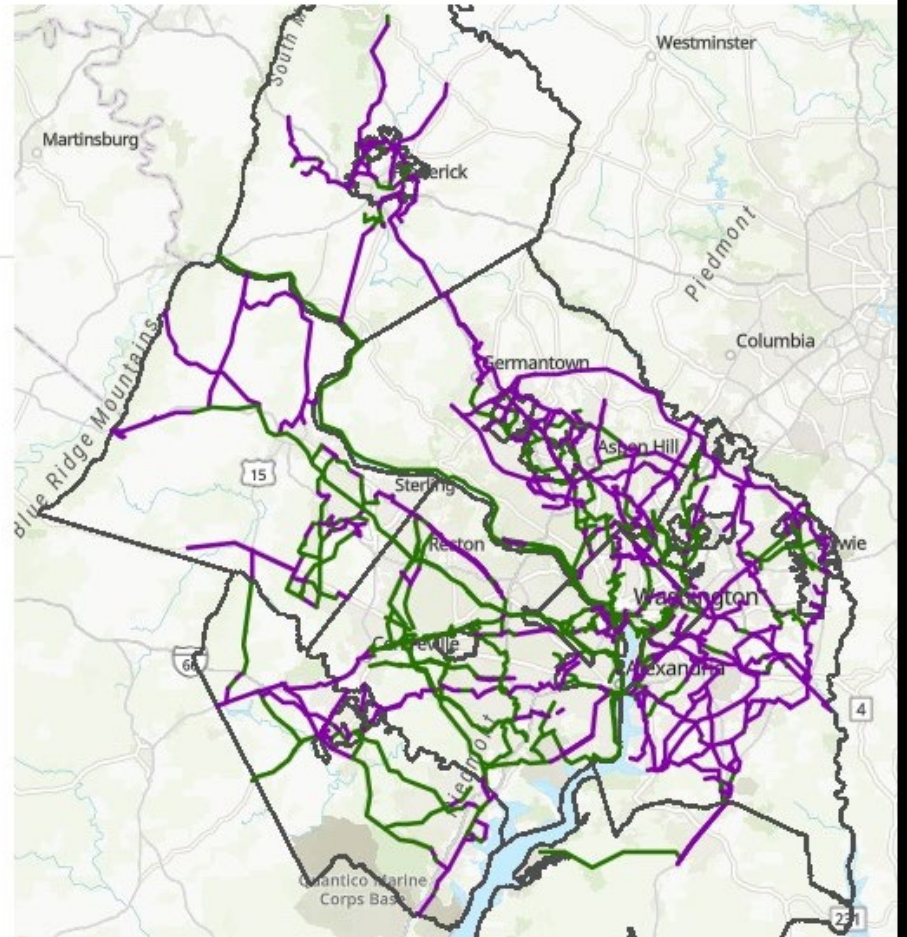
National Capital Trail Network (NCTN)

Status

- Existing
- Planned

Boundaries

TPB Members / COG Adjunct Members



Priority Areas Served by 2023 Network

Buffer Analysis 1/2 mile from NCTN Features	Within NCTN Buffer	Total Number of Features	% Served
Equity Emphasis Areas	334	364	92%
Regional Activity Centers	136	140	97%
High-Capacity Transit Areas	210	225	93%
Transit Access Focus Areas	48	49	98%



Population and Employment Served

Half Mile NCTN Buffer w/ TAZ, Cooperative Forecast 10	Within NCTN Buffer	Modeled Area Total	% Served
2020 Population	3,574,579	7,503,118	47%
2020 Employment	2,282,729	4,018,860	57%
2030 Population	3,913,552	8,195,344	48%
2030 Employment	2,569,958	4,499,328	57%



Progress Towards Completion

NCTN	Miles 2023	Miles 2020	Difference
Existing	773	644	+129
Planned	848	778	+70
Total	1621	1422	+199
Completed Since 2020	82*		

- 82 miles of the National Capital Trail Network have been completed since July 2020, a rate of approximately 27 miles per year*
 - *Based on projects that transitioned from planned to existing from 2020 to 2023, as identified by jurisdiction staff. Projects listed in Slide 10.
- 2023- 48% existing, 52% planned (by mileage)
- 2020- 45% existing, 55% planned



COUNTY	TIP_ID	Project Title	Status	Facility Type	Change Miles
Fairfax Co <Null>		66 Parallel Trail	Existing	Shared Use Path	17.73763295
District of Columbia		Anacostia River Trail-SW From Buzzard Point to	Existing	Shared Use Path	0.824335042
District of Columbia		Anacostia Riverwalk Trail	Existing	Shared Use Path	0.933846766
Loudoun County		Arcola Boulevard	Existing	Shared Use Path	1.736073364
Loudoun (BP7653)		Atlantic Boulevard Shared Use Path	Existing	Shared Use Path	0.668441656
Prince George's County		Back Branch Trail	Existing	Shared Use Path	0.064389994
Frederick County		Ballenger Creek	Existing	Shared Use Path	1.304140416
Prince George's County		Black Branch Trail	Existing	Shared Use Path	0.755090602
Loudoun (BP7678)		Braddock Road Shared Use Path	Existing	Shared Use Path	0.339944859
Montgomery County		City Of Rockville To Friendship Heights	Existing	Protected Bicycle L	0.317853669
Prince George's County		College Park Woods Connector	Existing	Shared Use Path	0.509875361
Prince George's County		Collington Retirement Ctr Trails	Existing	Shared Use Path	0.407844726
Loudoun County		Creighton Rd.	Existing	Shared Use Path	0.781567477
Loudoun County		Croson Lane Pedestrian Facilities	Existing	Shared Use Path	1.035939999
Prince William County		Dumfries Rd.	Existing	Shared Use Path	0.283845077
District of Columbia		East Capitol Street Bridge Connector	Existing	Protected Bicycle L	0.388430721
Montgomery County		Emory Lane Sidpath	Existing	Shared Use Path	0.296701299
Loudoun County		Grandmoore St. / Claude Moore Dr. to Loudoun	Existing	Shared Use Path	0.593413
Fairfax County		Grist Mill Trail	Existing	Shared Use Path	2.969843061
Loudoun County		Hansen Park Shared Use Path	Existing	Shared Use Path	0.806655586
Prince George's County		Indian Creek Trail	Existing	Shared Use Path	0.702132593
Prince William County		James Madison	Existing	Shared Use Path	5.002829521
Fairfax County		Jeff Todd Trail	Existing	Shared Use Path	1.69
Prince William County		Jefferson Davis	Existing	Shared Use Path	4.450244946
Loudoun (BP7674)		John Mosby Highway Pedestrian Facilities	Existing	Shared Use Path	0.779382
Prince George's County		Little Paint Branch Trail	Existing	Shared Use Path	1.919383099
Loudoun County		Loudoun County Parkway	Existing	Shared Use Path	7.9
Loudoun County		Loudoun County Parkway Pedestrian Facilities	Existing	Shared Use Path	1.040571282
Montgom BP8191		MacArthur Blvd.	Existing	Bikeable Shoulders	2.426126844
District of Columbia		Malcolm X Trail	Existing	Shared Use Path	1.195860035
District of Columbia		Metropolitan Branch Trail	Existing	Shared Use Path	1.634912638
Loudoun County		Mooreview Parkway Bicycle Lanes and Pedestrian	Existing	Shared Use Path	0.301829057
Arlington County		Mount Vernon Pentagon Connector	Existing	Shared Use Path	0.185165761
Frederick County		New Design Road Protected Bike Lanes	Existing	Protected Bicycle L	2.021290335
Prince William County		Nokesville Road	Existing	Shared Use Path	6.401371895
City of Frederick		Northern Branch Trail	Existing	Shared Use Path	0.428881574
Loudoun County		Northstar Boulevard	Existing	Shared Use Path	0.245969711
Prince George's County		Oxon Hill Road	Existing	Shared Use Path	0.431929039
Prince George's County		Pennsylvania Avenue (MD 4) Side Path	Existing	Shared Use Path	1.07715544
District of Columbia		Piney Branch Parkway Trail	Existing	Shared Use Path	0.859249
Prince William County		Rippon	Existing	Shared Use Path	0.297243
Loudoun (BP8327)		River Creek Parkway Bicycle Lanes and Pedestrian	Existing	Shared Use Path	0.337055
Loudoun County		Riverside Parkway	Existing	Shared Use Path	0.694590026
District of Columbia		Rock Creek Park Trails	Existing	Shared Use Path	0.488892017
Prince George's County		Rose Creek Trail	Existing	Shared Use Path	0.98833105
District of Columbia		S. Capitol Bridge Crossing	Existing	Shared Use Path	1.359843824
District of Columbia		Suitland Parkway Side Path from Southern Avenue	Existing	Shared Use Path	0.953674401
Prince George's County		Timothy Branch Trail	Existing	Shared Use Path	1.226184274
Frederick County		Town Of Middletown Trails	Existing	Shared Use Path	0.054731218
District of Columbia		Virginia Ave. SE between 2nd Street SE and 9th	Existing	Protected Bicycle L	0.754693075
Arlington County		Washington Blvd. Side Path Pentagon	Existing	Shared Use Path	0.523321551
Prince George's County		Woodrow Wilson Bridge Trail	Existing	Shared Use Path	0.828674568
Total					81.9573844

Notable Projects Completed Since 2020

- DC – Frederick Douglass Bridge
- Virginia – I-66 Trail
- Maryland – College Park Woods Connector



Frederick Douglass Bridge



“The new triple-arched Frederick Douglass Memorial Bridge includes six travel lanes for vehicles, a dedicated bike path, a pedestrian path, and four overlooks. The east and west ovals will connect to esplanades on both sides of the Anacostia River via pedestrian and bicycle paths.”



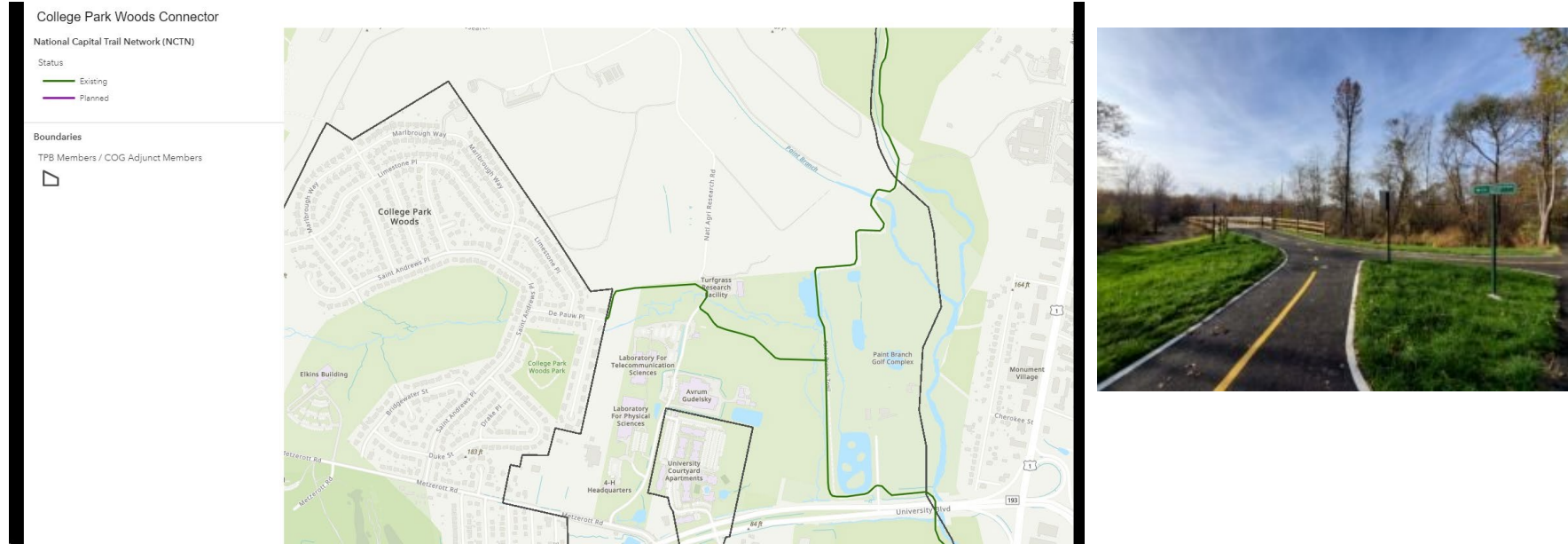
I-66 Parallel Trail



11 miles of trail built by the Transform 66 Outside the Beltway project, along I-66 in Fairfax County, are complete. Additional segments along I-66 will be upgraded or constructed in the coming years



College Park Woods Connector Trial



“The College Park Woods Connector is a half-mile connector across the University of Maryland land between the neighborhood of College Park Woods and the Paint Branch Trail. This trail links a residential community in the City of College Park with the University of Maryland campus and the Anacostia Tributaries Trail System (Photo credit to Jim Della-Giacoma).”



Comparing the 2020 and 2023 Networks

- 2023 network includes status updates as well as route adjustments, deletions, and additions versus the 2020 network
- More analytics comparing the new 2023 network to the previous 2020 network anticipated for future meetings



Outlook

- Next Steps
 - Integrate comments/corrections/suggestions from the TPB Technical Committee & BP Subcommittee
 - Return to TPB Technical Committee for endorsement (anticipated January)
 - Bring to TPB for information and approval (anticipated January or February)
- Next NCTN Update Spring 2024
 - In tandem with the update of the Bicycle and Pedestrian Project Database and with Visualize
 - NCTN to be integrated with the PIT database



CONTACTS:

Michael Farrell

TPB Senior Transportation Planner
mfarrell@mwkog.org

Charlene Howard

TPB Manager, Planning Data Resources
charlene@mwkog.org

mwkog.org

777 North Capitol Street NE, Suite 300
Washington, DC 20002



National Capital Region
Transportation Planning Board