



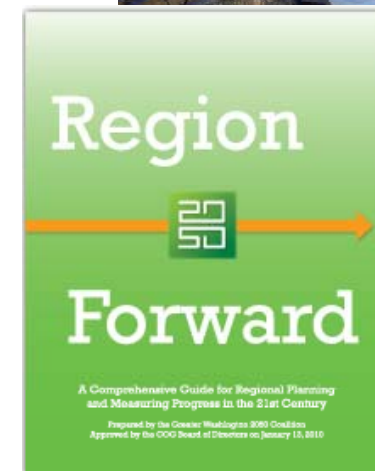
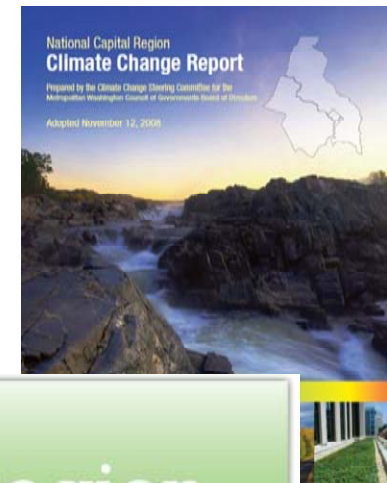
PROGRESS ON REGIONAL CLIMATE AND ENERGY GOALS



March 2012

CLIMATE INITIATIVES BACKGROUND

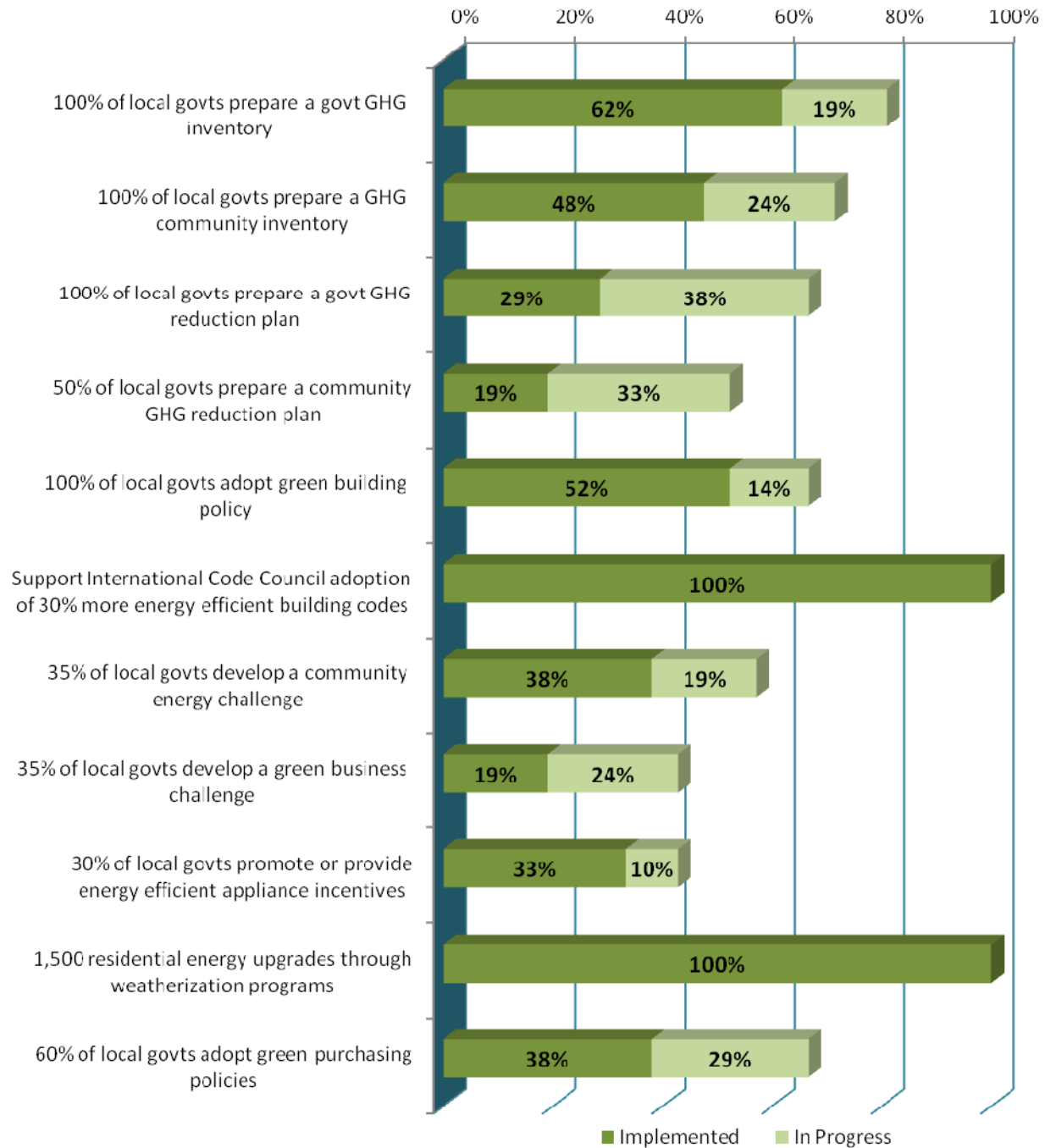
- COG Board created Climate Change Steering Committee (2007)
 - National Capital Region Climate Change Report (11/08)
- COG Board created CEEPC - Climate, Energy and Environment Policy Committee (2009)
 - 2010-2012 Regional Climate and Energy Workplan (1/10)
- *Region Forward Compact* adopted (2010)
 - Foundation for COG's efforts to build a sustainable metropolitan Washington region
 - Draws climate related goals from Climate Change Report



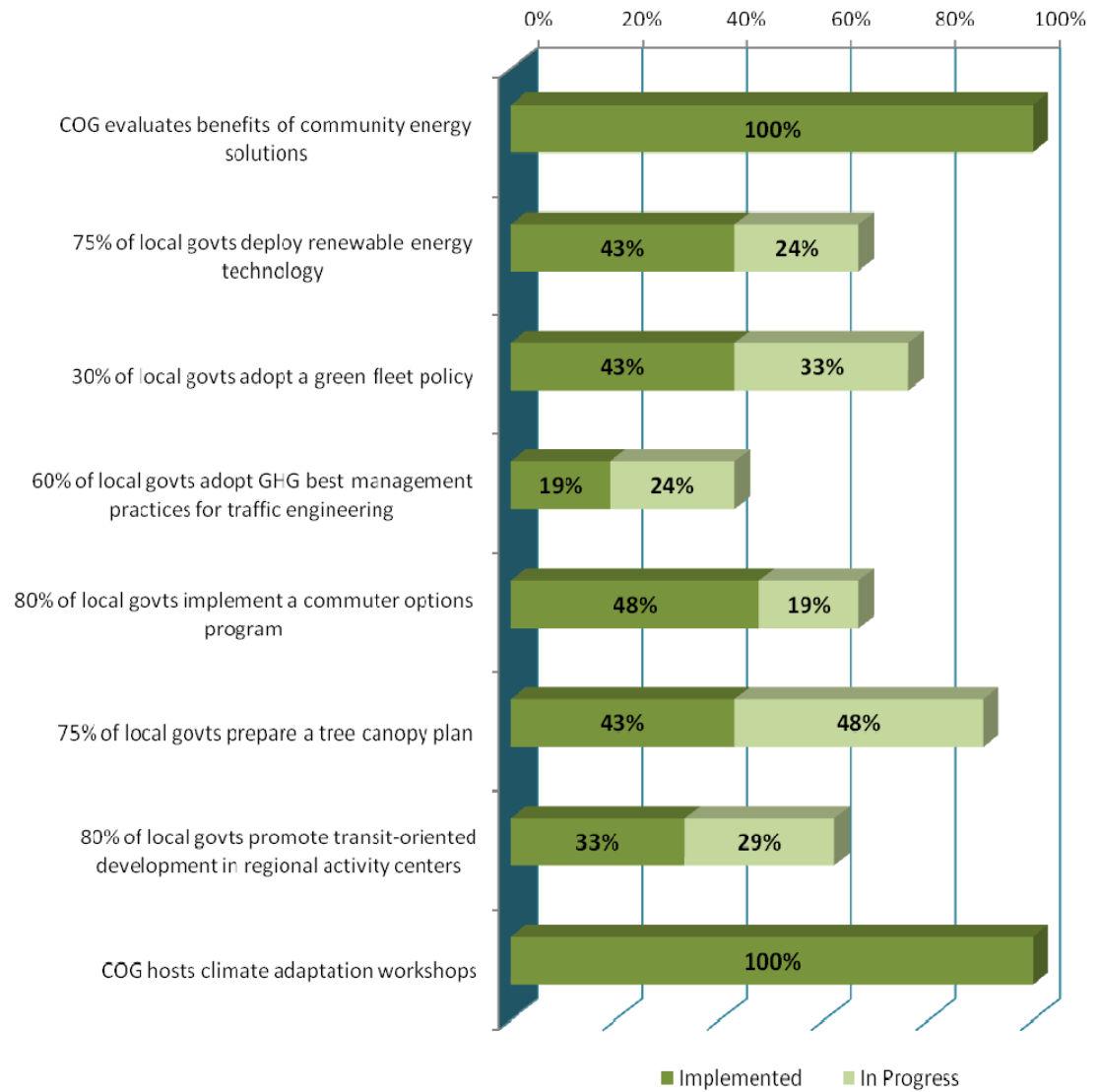
COLLECTION OF 2011 DATA

- Local government survey on CEEPC Workplan
 - 20 of 21 surveys returned
- School district survey on climate and energy programs
 - 9 of 12 surveys returned
- Utilities survey on electricity and natural gas consumption, customer base, renewable energy systems, green power purchase, smart grid/advanced meters
 - Surveys due end of March 2012

PROGRESS ON 2011 REGIONAL GOALS



PROGRESS ON 2011 REGIONAL GOALS (CONTINUED)

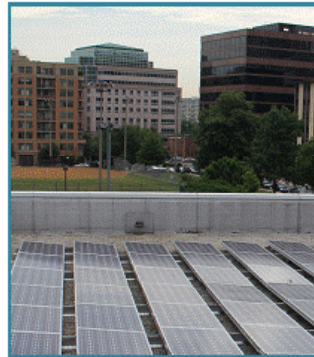


LOCAL GOVT RENEWABLE ENERGY PROJECT HIGHLIGHTS

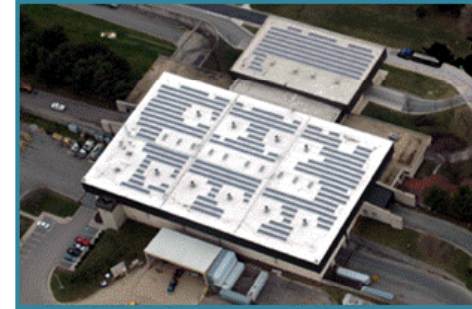
Loudoun County's Harmony Park and Ride at Scott Jenkins Memorial Park features 48 solar arrays, LED lights and charging stations for electric vehicles.
(Source: www.leesburg2day.com)



Arlington County Central Library's 60 kilowatt solar panel system consist of 250 panels - each capable of producing a maximum of 240 watts.
(Source: Arlington County)



The Montgomery County Shady Grove Transfer Station has 1,248 solar panels that produce 280 kilowatts, or about 30% of the facility's energy needs. (Source: www.montgomerycountymd.gov)

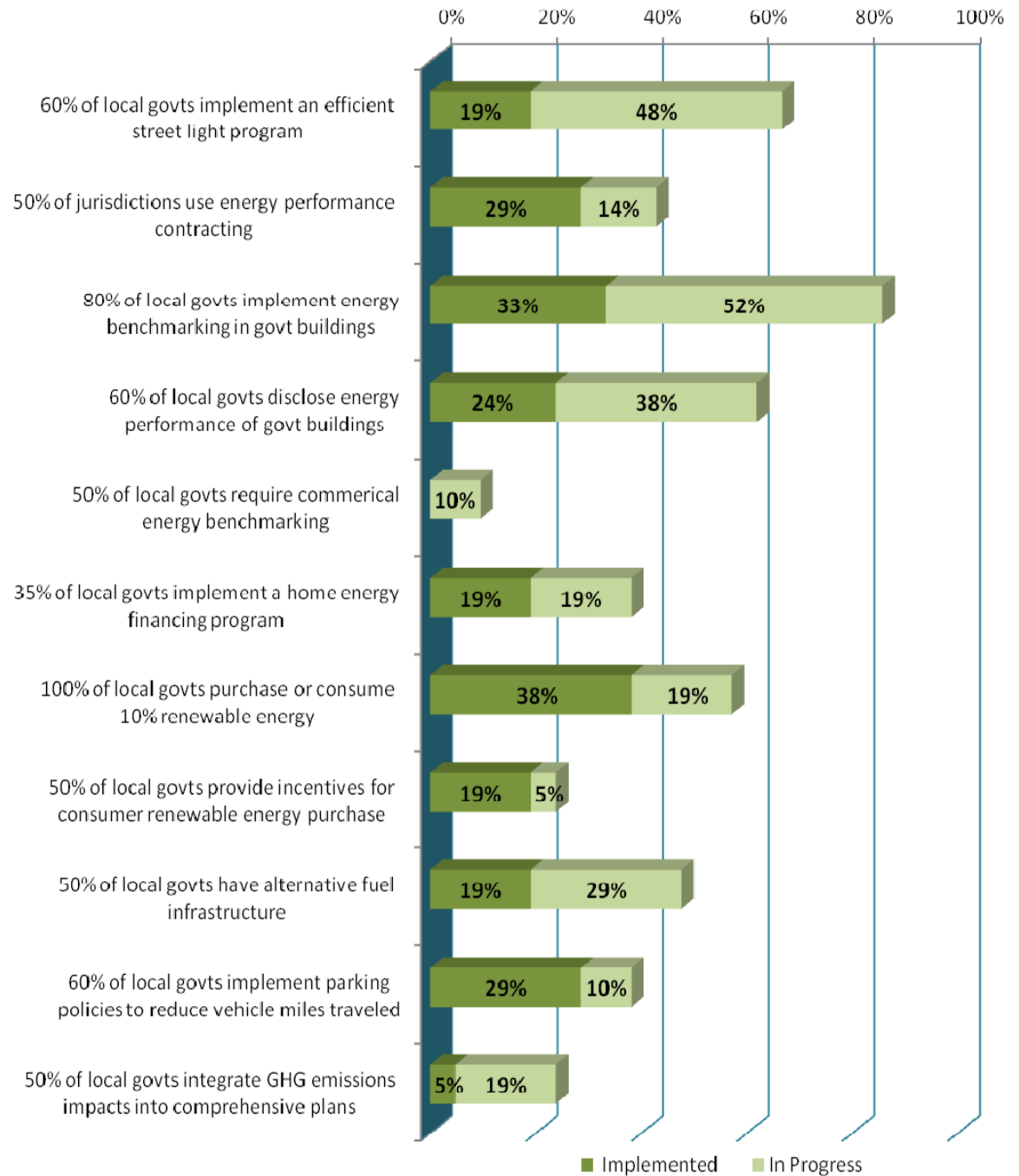


The City of Takoma Park has installed 94 kilowatts of solar panels on city facilities including the community center and public works facility.
(Source: www.gazette.net)



Fairfax County's Noman M. Cole, Jr. Pollution Control Plant replaced four standard 25 horsepower mixers with a solar mixer that is saving about \$40,000 a year in energy costs. (Source: Fairfax County)

PREVIEW OF PROGRESS ON 2012 REGIONAL GOALS



SELECT LOCAL MEASURE HIGHLIGHTS

Local Government	2010 Census Population ¹	Comprehensive Energy Strategy	Community Energy Challenge	Green Business Challenge	Purchase or Consume 10% Renewable Energy	Renewable Energy on Govt Property	Green Fleet Policy	Alternative Fuel Infrastructure	Parking Policies to Reduce VMT	Commuter Options Program	Promote TODs in RACs ³	GHG Impacts in Comp Plan
District of Columbia	601,723	●	●	●	●	●	●	●	●	●	●	○
Suburban Maryland												
Frederick County	233,385	●	●	●	●	●	●	○	NR	●	NR	NR
City of Frederick ²	65,239	○	●	○	○	NR	○	○	○	○	●	○
Montgomery County	971,777	●	●	●	●	●	●	●	○	○	●	●
City of Gaithersburg ²	59,933	●	○	○	●	●	○	●	○	●	●	○
City of Rockville ²	61,209	●	●	●	●	○	●	●	●	●	●	○
City of Takoma Park ²	16,715	○	○	○	●	●	●	○	○	●	N/A	N/A
Prince George's County	863,420	●	○	○	N/A	●	●	○	N/A	○	●	○
City of Bowie ²	54,727	●	●	●	●	●	●	NR	●	○	●	NR
City of College Park ²	30,413	○	N/A	N/A	●	N/A	N/A	N/A	N/A	●	●	N/A
City of Greenbelt ²	23,068	○	●	○	●	●	●	●	●	○	●	N/A
Town of Bladensburg ²	9,148	○	○	○	○	NR	●	NR	NR	●	NR	NR
Northern Virginia												
Arlington County	207,627	●	●	●	●	●	●	●	●	●	●	●
Fairfax County	1,081,726	●	●	○	N/A	●	●	●	●	●	●	○
Loudoun County	312,311	●	●	●	○	●	●	●	●	●	●	●
Prince William County	402,002	●	●	●	N/A	NR	●	NR	NR	●	NR	NR
City of Alexandria	139,966	●	○	●	●	●	NR	○	NR	●	●	●
City of Fairfax	22,565	●	○	○	○	NR	●	NR	NR	○	NR	●
City of Falls Church	12,332	●	○	○	●	●	●	●	○	●	○	○
City of Manassas	37,821	●	N/A	N/A	N/A	●	●	●	●	N/A	N/A	N/A
City of Manassas Park	14,273	○	●	○	○	NR	○	NR	NR	●	NR	NR

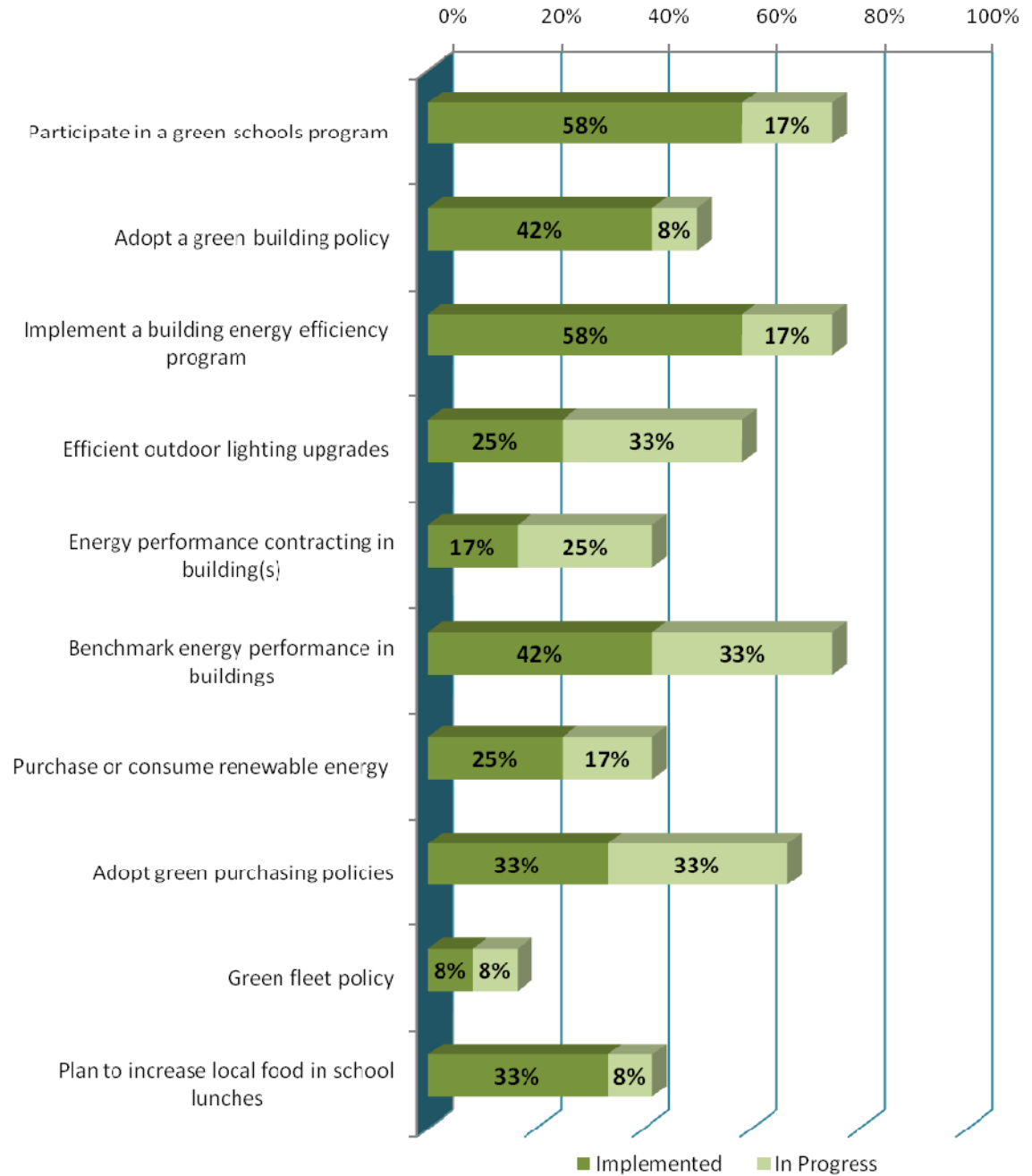
● - Implemented ● - In Progress ○ - Not Started N/A - Not Applicable NR - No Response

¹Source: COG tabulation of Census 2010 PL 94-171 Redistricting Data

²Population in Maryland cities is included in appropriate county totals.

³TODs = Transit Oriented Development and RACs = Regional Activity Centers

SCHOOL DISTRICTS



DISCUSSION AND FEEDBACK

- Where do we need to inspire action?
- Should any revisions be made to the goals and measures in the Workplan?