

2008

Homeless Enumeration for the
Washington Metropolitan Region

Presented by

The Homeless Services Planning and
Coordinating Committee

May 14, 2008

The Housing Continuum

**Public Sector
Investment**

Homeless
Shelters/
Transitional

Supportive
Housing

Public
Housing

Assisted
Housing

Rental
Housing

First-Time
Homebuyer

Move-Up/
Long Term
Homeownership

**Private Sector
Investment**

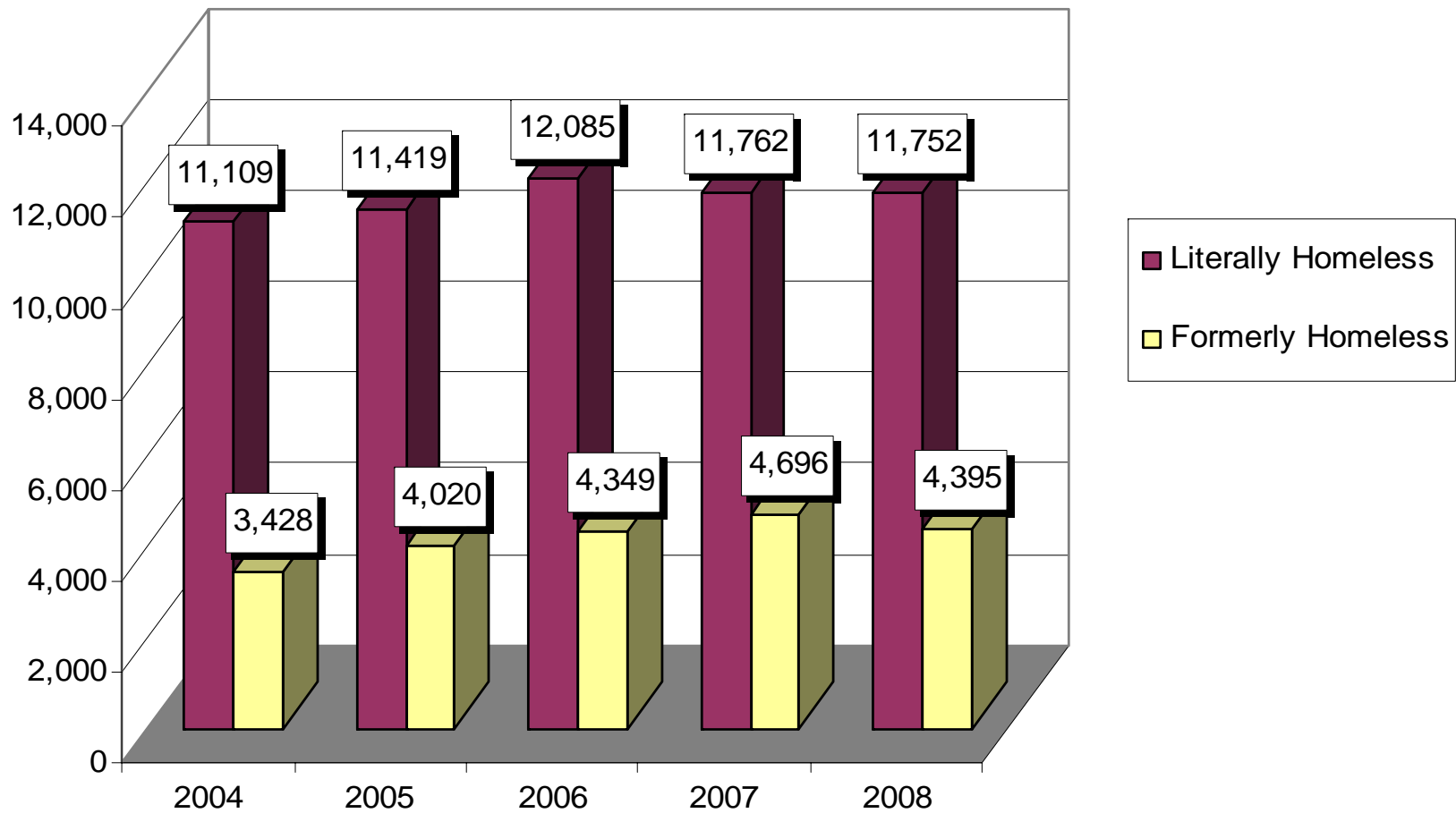
Source: Cisneros

Homeless by Jurisdiction, 2005-2008

Jurisdiction	Persons Counted				% Change
	2005	2006	2007	2008	2005-2008
District of Columbia	6,026	6,157	5,757	6,044	0.3%
Alexandria	433	377	375	348	-19.6%
Arlington County	410	477	462	410	0.0%
Fairfax County/City & Falls Church	1,675	1,766	1,813	1,835	9.6%
Frederick County	271	212	223	302	11.4%
Loudoun County	93	184	211	170	82.8%
Montgomery County	1,068	1,164	1,139	1,150	7.7%
Prince Georges County	939	1,291	1,168	943	0.4%
Prince William County	504	498	614	550	9.1%
Total Homeless Persons	11,419	12,126	11,762	11,752	2.9%

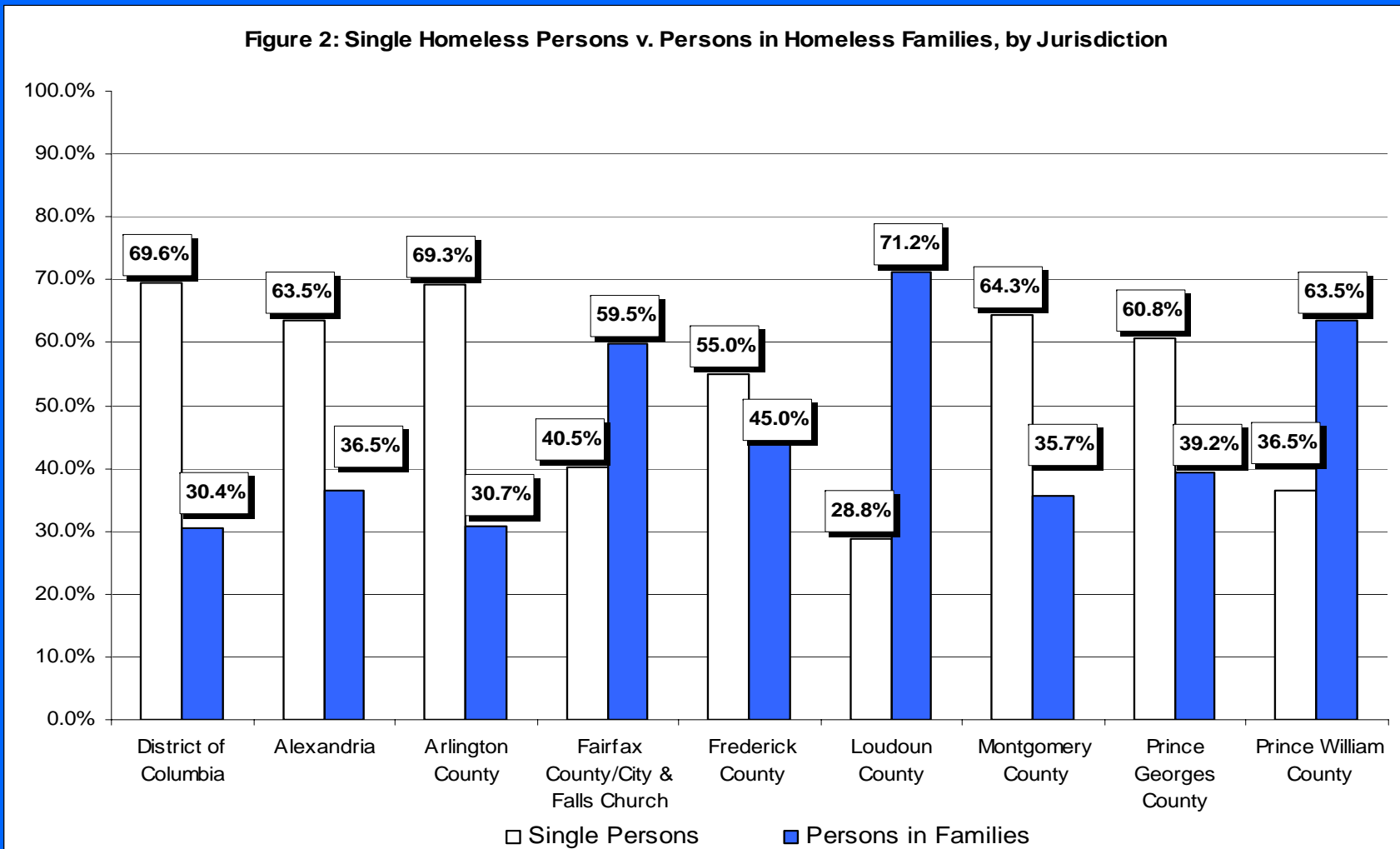
Number of Literally Homeless is flat

Figure 4: Literally Homeless v. Formerly Homeless as a Region



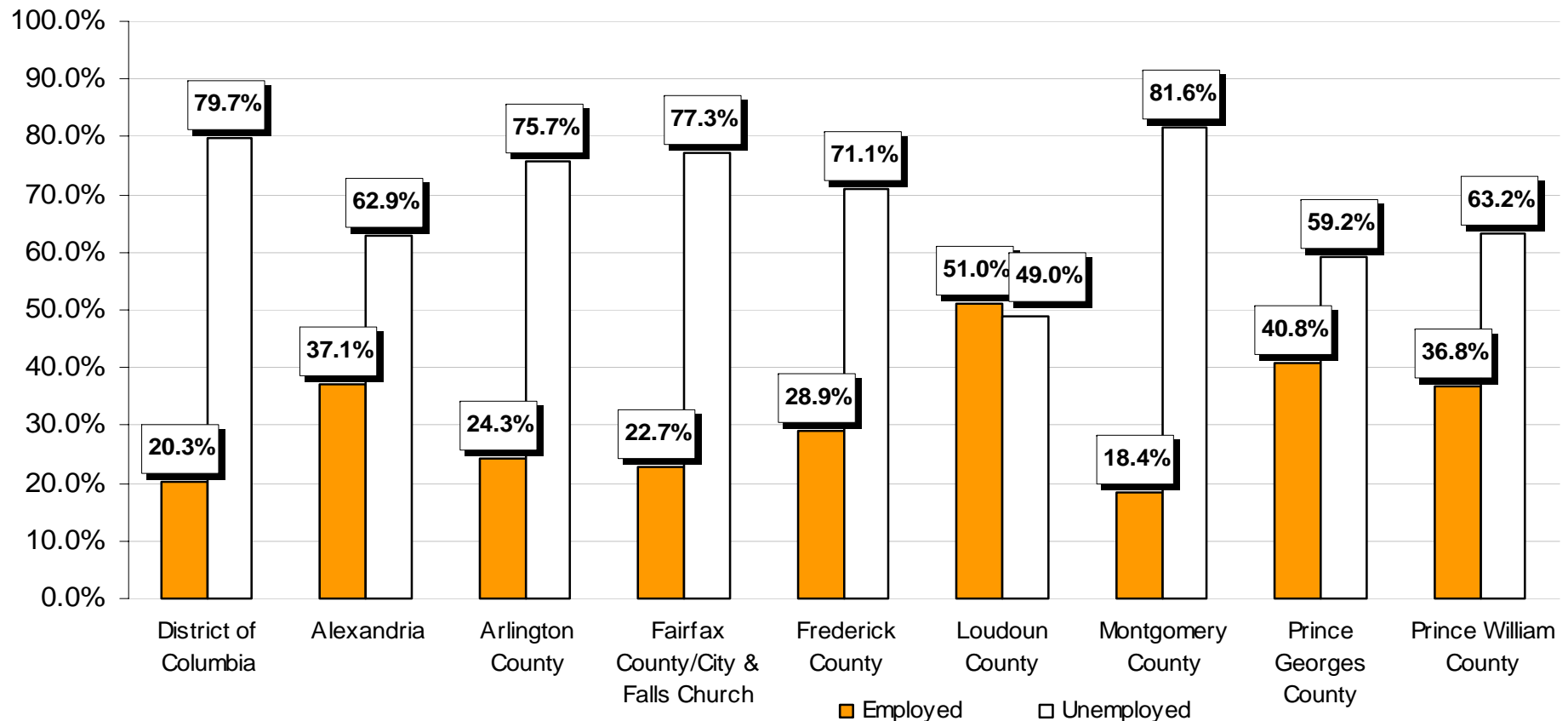
Regional Trends and Variation in Singles Adults and Persons in Families, 2005-2008

- Singles have increased from 55% to 61%
- Persons in families decreased from 45% to 39%



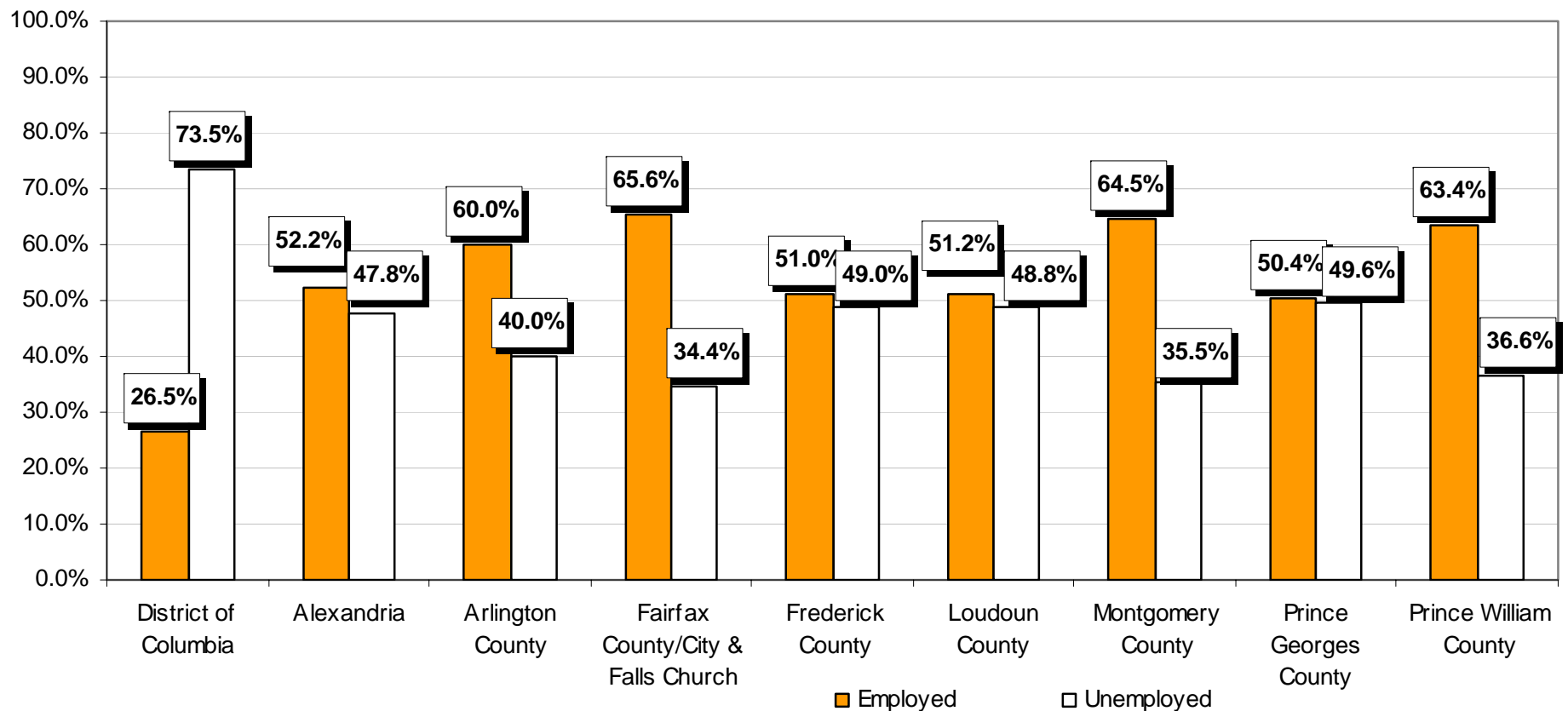
24% of single adults were employed full or part-time

Figure 1C: Percentage Employed, Literally Homeless Single Persons, by Jurisdiction



47% percent of adults in families were employed full or part-time

Figure 1D: Percentage Employed, Adults in Literally Homeless Families, by Jurisdiction



Recommendations To Reduce Homelessness

- More targeted resources to prevent homelessness (emergency rental assistance, short-term support).
- Housing First Approach – placing people in housing first instead of emergency shelter and provide them with supportive services.
- Jobs that pay a living wage – increase incomes.
- Creating affordable housing opportunities at ALL income levels. Note: 53% of adults in families and 19% of single adults were employed.