

# Updates on the COG Commuter Connections Website (VHB)

- Introductions
  
- Background of the Project
  
- Presenting
  - Nat Grier, PE, VHB – [ngrier@vhb.com](mailto:ngrier@vhb.com)
  - Nate Foster, VHB – [nfoster@vhb.com](mailto:nfoster@vhb.com)

# Updates on the COG Commuter Connections Website (VHB)

- Over the past few years, several significant changes have been made to the existing Commuter Connections website.
- These changes are intended to improve the user experience, and allow the website to be a tool to assist regional coordinators and program administrators.
- This presentation will outline:
  - Existing changes made in the website
  - Anticipated future changes
- Feedback from you
  - What is helpful/not helpful to include?
  - What are we missing?

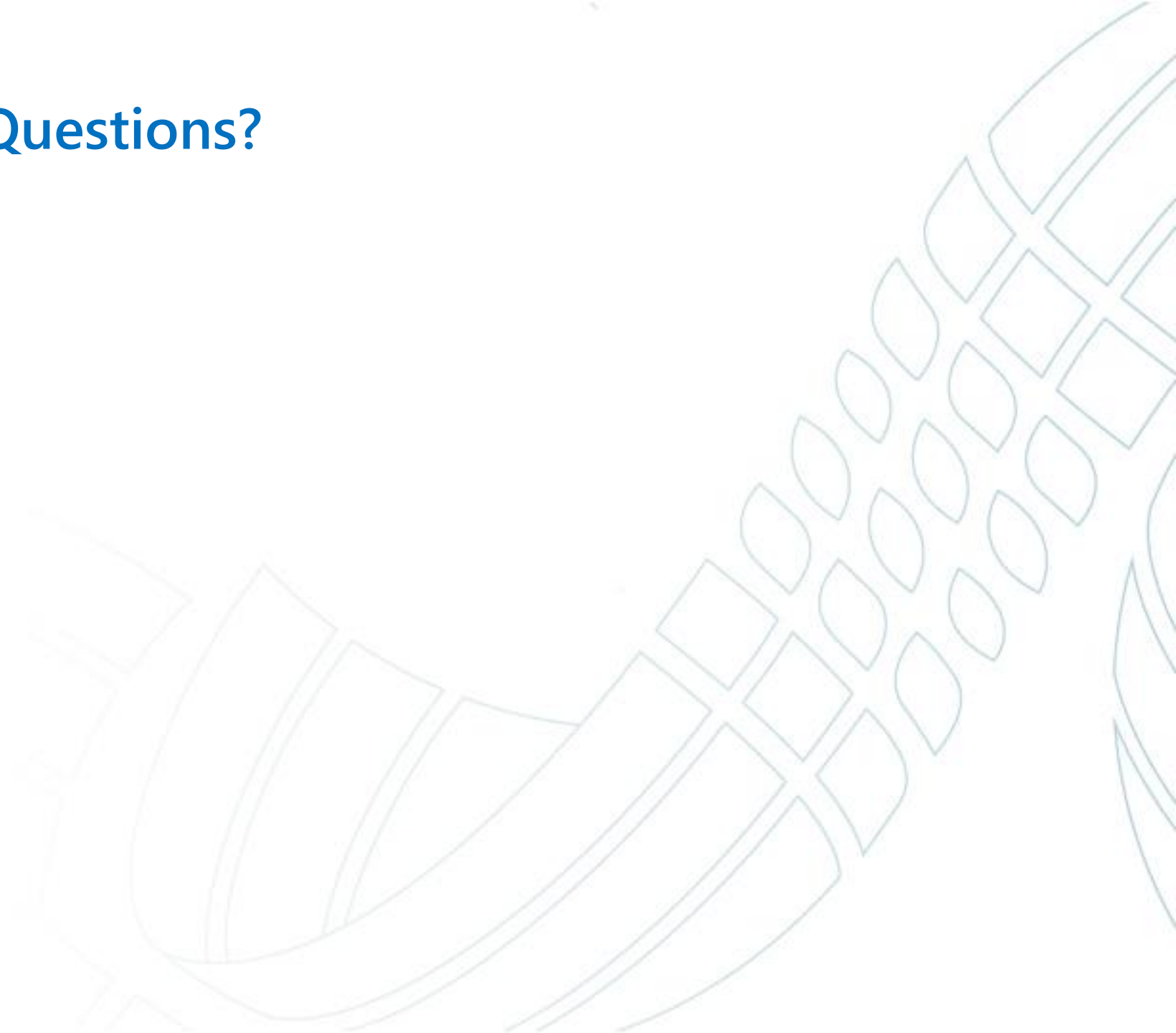
## Changes To the Website (Completed)

- Migrated data from Access to SQL Server  
– improved query speed
- Improved query abilities from web
- Included common data from additional travel surveys in both Arlington and Montgomery Counties
- Added excel data export function to view individual records and perform more in depth analysis

## Changes To the Website (In Progress)

- Pamphlet Output with Improved Charts
- Employer Comparison Elements
- Dynamic AVO calculations
- Transit Proximity scoring
- Geographic querying

Questions?



**Nat Grier** | [ngrier@vhb.com](mailto:ngrier@vhb.com) | 571.389.8105

**Nate Foster** | [nfoster@vhb.com](mailto:nfoster@vhb.com) | 571.389.8110

[www.vhb.com](http://www.vhb.com)



Offices located throughout the east coast