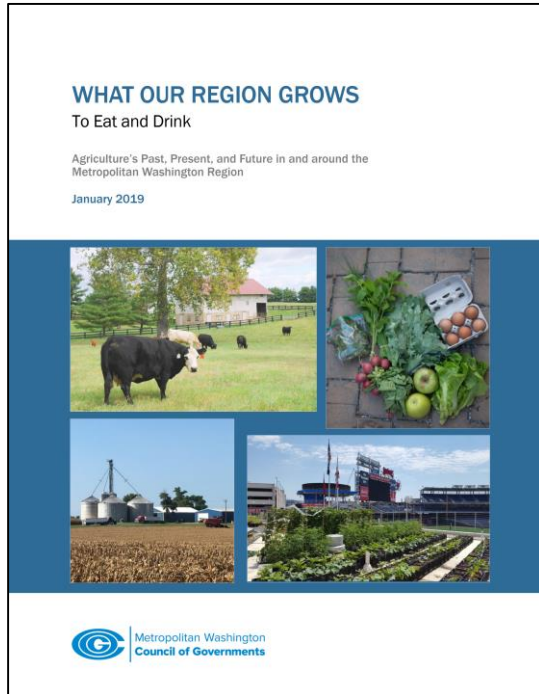
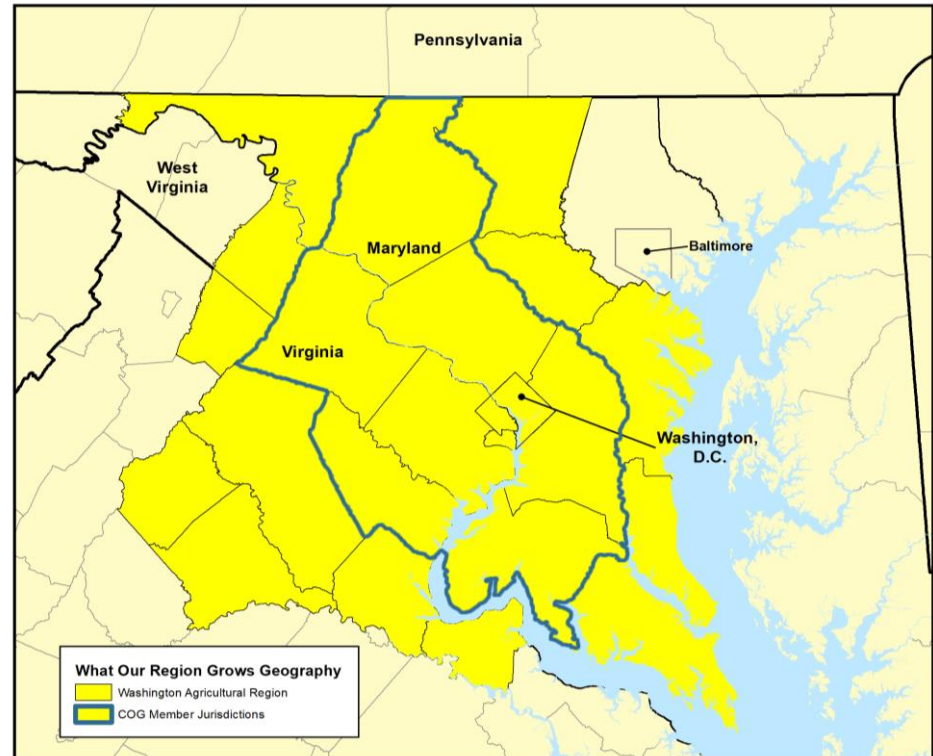


# What Our Region Grows



2019 *What Our Region Grows* report includes 2012 Census of Ag data, an update with the 2017 Census of Ag data is underway



*What Our Region Grows Geography*

# Ag's Economic Impact: COG Region

## Washington, D.C.

**\$5.47 billion** in economic impact  
Production, Distribution, Grocery,  
Restaurants, & Support Industries <sup>1</sup>

## Maryland

**\$2.9 billion** in economic impact  
Agriculture, Forestry, Aquaculture, &  
Support Industries <sup>2</sup>

## Virginia

**\$2.23 billion** in economic impact  
Agriculture & Forestry <sup>3</sup>



*Photo credit: Richard Sullivan/Walsh Family Wine*

### Notes

<sup>1</sup> Preliminary findings from DC Food Economy Study

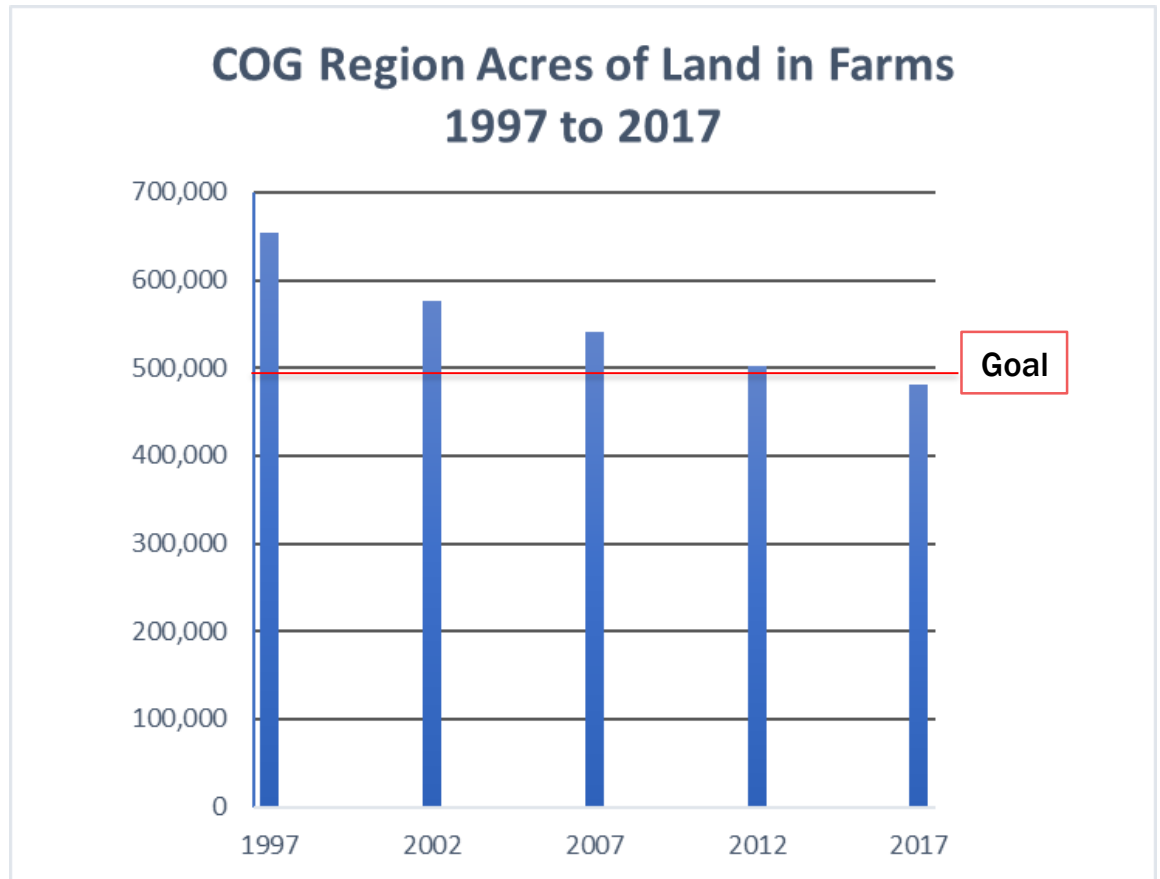
<sup>2</sup> Economic Impact of Select Resource Based  
Industries in Maryland

<sup>3</sup> The Economic Impact of Virginia's Agricultural and  
Forest Industries

# Land in Farms: COG Region

**Region Forward:  
Maintain more  
than 497,500  
acres of land in  
farms**

New data released  
in April:  
**480,281 acres** for  
the COG Region



# Regional Trends

- Long term decline in farmers, farms, land in farms
- Lower production levels and dairy is in crisis
- Grain and forage dominate production
- Continued growth: on-farm craft beverage, agritourism, direct sales, and urban agriculture
- Modest increase in net farm income from 2012
- Increasing interest in healthy soils for carbon sequestration



# Declining Regional Self-Reliance

## 2012 Food Production and Demand Comparison: Washington Ag Region

Food Product	Production (acres or animals)	Demand (acres or animals)	Percent Demand Fulfilled	Surplus/Deficit (acres or animals)
Apples	1,778	18,655	10%	-16,877
Blueberries	56	3,101	2%	-3,045
Strawberries	34	12,896	0%	-12,862
Beans	2,323	11,365	20%	-9,042
Potatoes	181	28,533	1%	-28,352
Pumpkins	588	3,167	19%	-2,579
Squash	91	3,404	3%	-3,313
Sweet Corn	1,346	24,106	6%	-22,760
Tomatoes	444	35,615	1%	-35,171
Wheat	63,079	238,021	27%	-174,942
Corn	169,121	36,564	463%	132,557
Beef	119,166	722,321	16%	-603,155
Chicken	65,357	74,169,582	0%	-74,104,225
Pork	36,966	1,905,264	2%	-1,868,298
Dairy	44,041	235,067	19%	-191,026

Self-sufficiency versus regional self-reliance and factors driving decline



# Farmland: Multiple Benefits



## Benefits of Healthy Soils

- Improved water holding capacity
- Sequester carbon and reduce GHG emissions
- Functions as a biological system; habitat for important soil organisms
- Long-term sustainability of agriculture
- Enhance crop quality
- Improve resistance to weeds and pests

Source: COG





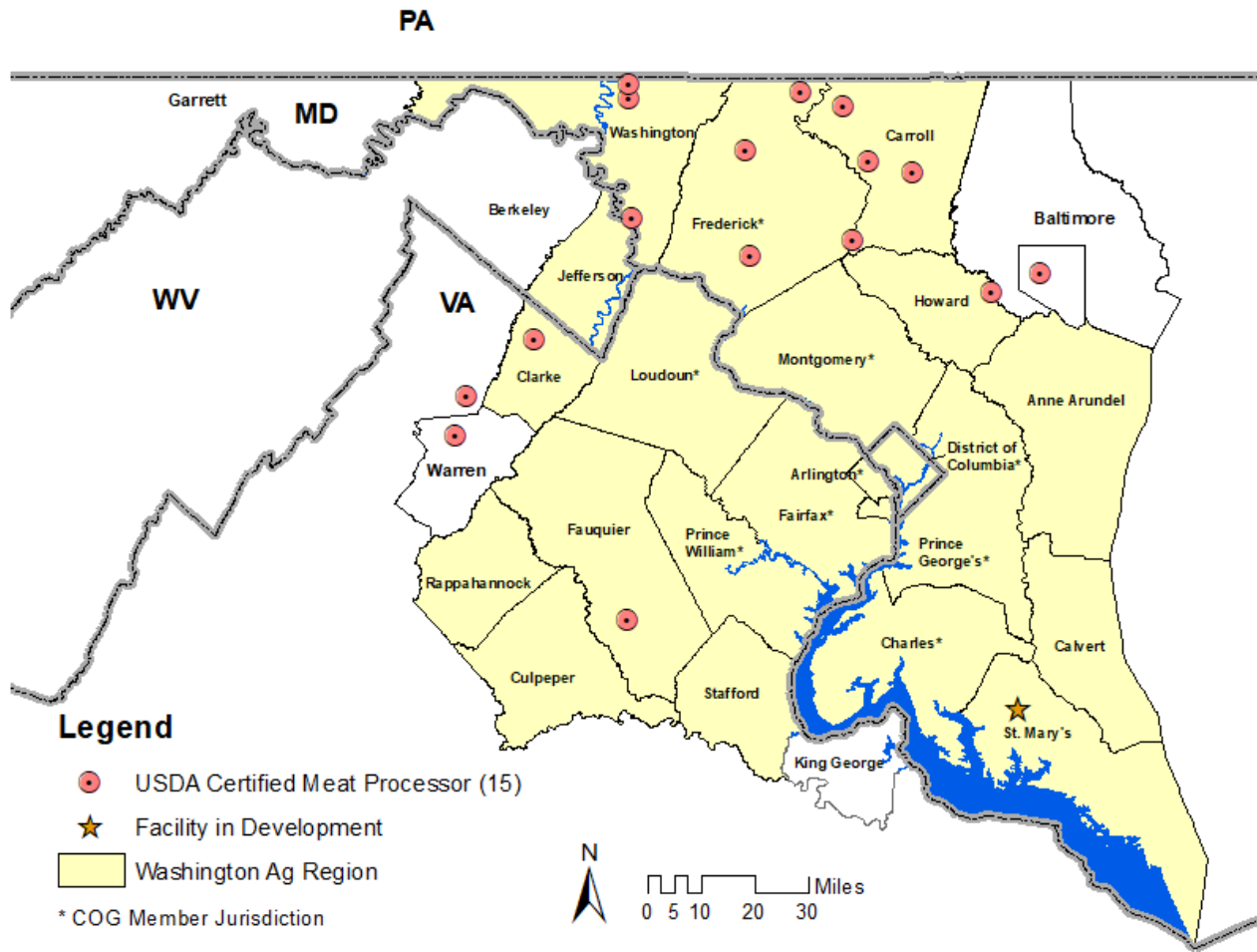
# Farmland: Multiple Stressors



*Record rainfall in 2018 challenged even the best managed soils.*

*Photo credit:  
The Farm at  
Sunnyside*

# Infrastructure: Animal Processing





# The Region's Food and Ag Future

What kind of agricultural future do we want?

Currently, a lack of *regional* planning and coordination for:

- Food jobs/workforce
- Food security
- Environmental benefits of agriculture
- Quality of life
- Access to local food

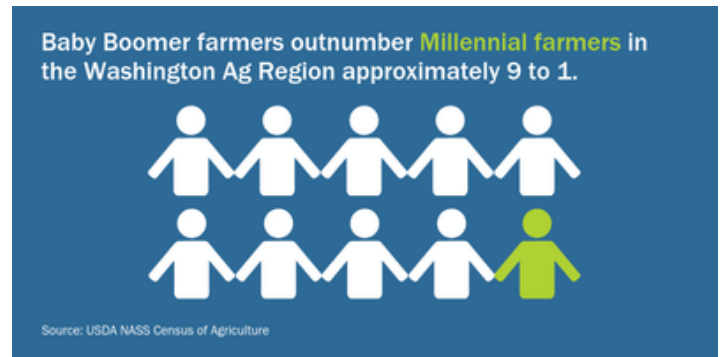


Photo Credit: (Top) Tyler Grigsby/ Tyler Grigsby Photography

# Report Recommendations

- Strategic Plan for Agriculture
- Create a Regional Committee on Food and Ag
- Regional forums on Farm Viability, Land Preservation, etc.
- Local investment in Ag
- Policy Improvements
- Regional collaboration on infrastructure



*Above and Left:* Squash planting through harvest and storage at Shlagel Farms in Charles County, a diversified fruit and vegetable farm growing for retail and wholesale markets. (Karl Shlagel/Shlagel Farms)

# Next Steps in Progress

COG's Chesapeake Bay Policy Committee created a time-limited, Ag Task Force to assess regional capacity to implement *What Our Region Grows* recommendations.

Six local elected officials from MD and VA + additional stakeholder interviews.

Final report at the end of July.



Liked by [cultivatethecity](#), [grr429](#) and 96 others

[loveandcarrots](#) Have a RADish Friday! This week brought an explosion of growth at the [@tenatclarendon](#) rooftop farm. We take pride in sustainably producing organic vegetables for the residents. This is the #futureoffood! 🍷🌍



# Initial Ag Task Force Findings

COG should be a lead convener for sustained, regional action on the food and farm economy.

Key Issues:

- Jobs and workforce
- Emergency preparedness/resiliency
- Land, climate, water, and soil health
- Education
- Sustainable agriculture, including urban agriculture
- Connectivity and innovation



Photo Credits: (Above) Niraj Ray/Cultivate the City  
(Below): Yankey Farms