

National Capital Region Transportation Planning Board

777 North Capitol Street, N.E., Suite 300, Washington, D.C. 20002-4290 (202) 962-3310 Fax: (202) 962-3202 TDD: (202) 962-3213

MEMORANDUM

TO: Planning Directors Technical Advisory Committee

FROM: Sarah Crawford, Department of Transportation Planning

SUBJECT: FY 2011 Transportation/Land-Use Connections (TLC) Technical Assistance Program

DATE: March 17, 2010

This memorandum presents a schedule for the FY 2011 TLC technical assistance program. The Transportation Planning Board (TPB) initiated the Transportation/Land-Use Connections (TLC) Program in 2007 to provide support to local jurisdictions as they deal with the challenges of integrating land-use and transportation planning at the community level. There are two major components to the TLC Program: The Regional Clearinghouse and the Technical Assistance Program. More information about the TLC Program, the FY 2011 project solicitation process, and application materials may be found at the TLC website: www.mwcog.org/tlc.

FY 2011 TECHNICAL ASSISTANCE PROGRAM SOLICITATION

TPB staff will commence the project solicitation process for FY 2011 projects in FY 2010. It is anticipated that \$220,000 from the FY 2011 Unified Planning Work Program (UPWP) funding for the TLC Program will be made available for technical assistance projects in this application cycle. The Maryland Department of Transportation (MDOT) is expected to commit \$100,000 from their technical assistance account for projects in Maryland, with special emphasis on projects relating to transit-oriented development (TOD). In the FY 2011 program, technical assistance again will be provided in amounts from \$20,000 to \$60,000, with the potential for scaling applications to provide the greatest benefit for all applicants.

On March 12, 2010, the TPB released the call for projects for the FY 2011 TLC technical assistance program, with a due date of May 12, 2010. On Thursday, April 1, 2010, at 10:00 a.m. in the first floor Training Center at COG, TPB staff will conduct an application workshop for the TLC Program. The application workshop will provide an overview of the purpose of the TLC Technical Assistance Program, review lessons learned from past projects, detail the TLC application process, and highlight the evaluation criteria that will be used by the selection panel to review the applications. This workshop will also be accessible through webinar software. This workshop was provided for the first time during the FY 2010 solicitation and was well attended.

FY 2011 PROJECT SELECTION PROCESS

The selection process for the FY 2011 projects will mirror the process used in FY 2010. The TPB will convene a selection panel in June, chaired by non-voting TPB member Julia Koster of the National Capital Planning Commission. Below is a list of target organizations from which representatives would be sought for service on the selection panel:

- American Institute of Architects
- American Planning Association
- Brookings Institution
- Institute of Transportation Engineers
- Transportation Research Board
- Urban Land Institute

FY 2011 TIMELINE

The following timeline is proposed for the FY 2011 TLC technical assistance program:

- March 12, 2010: The TPB released the call for projects for FY 2011 technical assistance.
- April 1, 2010: The TPB will host an Application Workshop for jurisdictions and organizations interested in applying for FY 2011 technical assistance funding.
- May 12, 2010: TLC applications for technical assistance are due by 4:00 p.m.
- June 2010: The TPB will convene a selection panel to review and recommend projects.
- July 21, 2010: Request TPB approval for FY 2011 slate of projects.



TRANSPORTATION/LAND-USE CONNECTIONS PROGRAM

The Transportation/Land-Use Connections Program

FY 2011 Project Solicitation

Sarah Crawford
Presentation to the COG Planning Directors
March 19, 2010



TRANSPORTATION/LAND-USE CONNECTIONS PROGRAM

The TLC Program: Moving From “What If” to “How To”

The TLC Program was an action-oriented result of the TPB’s Regional Mobility and Accessibility Scenario Study process

Two components:

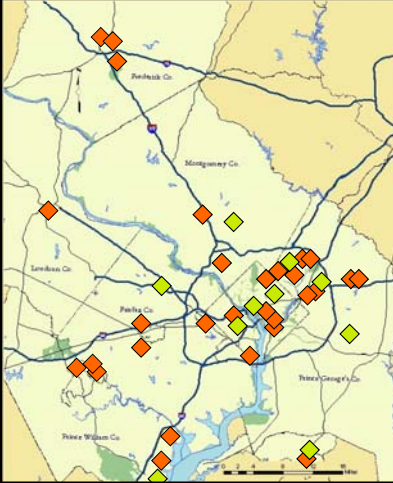
- Regional Clearinghouse: www.mwcog.org/tlc
- Technical Assistance Program
 - Small-scale, rapid-response
 - Available to local jurisdictions

TLC TRANSPORTATION/LAND-USE CONNECTIONS PROGRAM

TLC Technical Assistance Summary

39 Technical Assistance Projects:

- 6 in the District
- 19 in Maryland
- 14 in Virginia



Projects address common challenges:

- Bike/Ped Issues
- “Complete Streets”
- Parking
- Transit Enhancements & Expansions

TLC TRANSPORTATION/LAND-USE CONNECTIONS PROGRAM

FY 2011 Round of Technical Assistance

\$ 220,000	Available in TPB funding
\$ 100,000	From MDOT Technical Assistance funds for projects focusing on TOD
+	
<hr/>	
\$ 320,000	Total FY 2011 Funding

4

TLC TRANSPORTATION/LAND-USE CONNECTIONS PROGRAM

Past TLC Projects of Interest

Corridor Planning on Washington Street, Falls Church, Virginia

- Project identified transportation strategies needed to facilitate the desired land-use vision for the corridor
- Recommendations included site access, on-street parking locations, and pedestrian and transit improvements



TLC TRANSPORTATION/LAND-USE CONNECTIONS PROGRAM

Past TLC Projects of Interest

Identification of TOD Strategies for the Landover Metro Station, Prince George's County, Maryland

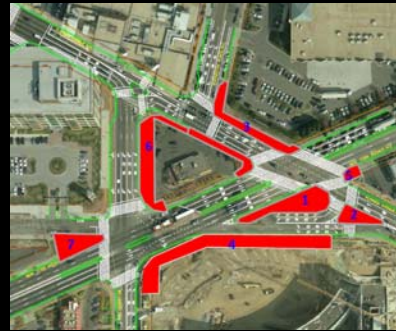
- The final product recommended strategies for transit-oriented development (TOD) for a semi-industrial and potentially environmentally degraded landscape.

TLC TRANSPORTATION/LAND-USE CONNECTIONS PROGRAM

Past TLC Projects of Interest

Gateway Transportation Project, NoMa Business Improvement District, District of Columbia

- The consultant provided land-use and transportation recommendations for “opportunity sites” around the intersection of New York and Florida Avenue, NE



TLC TRANSPORTATION/LAND-USE CONNECTIONS PROGRAM

FY 2011 Project Schedule

Project Solicitation:

- Applications are due May 12, 2010.
- Application workshop: April 1, 2010, 10:00 a.m., MWCOG Training Center

Selection/Approval:

- The TLC Selection Panel will meet in June.
- The TPB is expected to approve the panel's project recommendations on July 21, 2010.



TRANSPORTATION/LAND-USE CONNECTIONS PROGRAM

FY 2011 Project Schedule

Application materials and information may be found on the TLC website:

www.mwcog.org/tlc

**Sarah Crawford
scrawford@mwcog.org
202-962-3237**