

# WHAT OUR REGION GROWS

---

## Food and Farming in Metropolitan Washington (and Beyond)

Lindsay Smith and Jimmy Shue  
Regional Food Systems Program  
Metropolitan Washington Council of Governments

Presentation to the TPB Freight Subcommittee  
January 10, 2019

# COG's Regional Food Systems Program

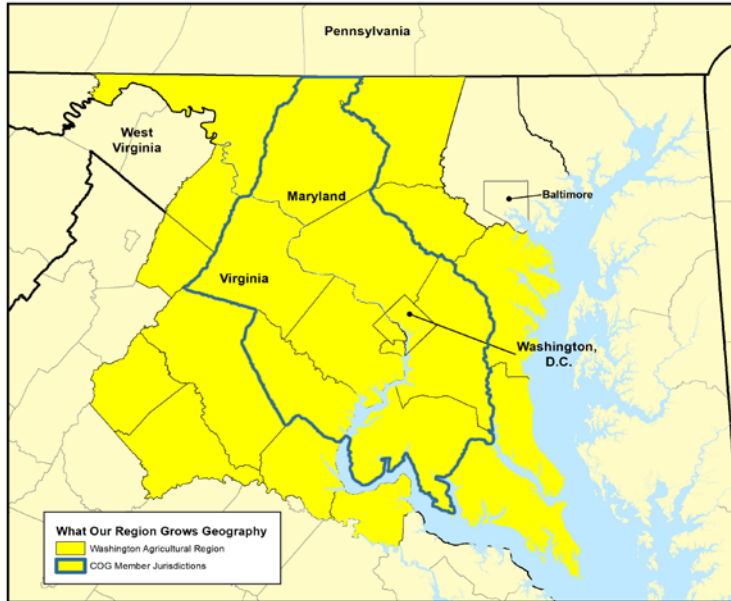
Multiple priorities, including providing support to food and agriculture policy and infrastructure development

**Note:** Today's presentation shares data from several different geographies

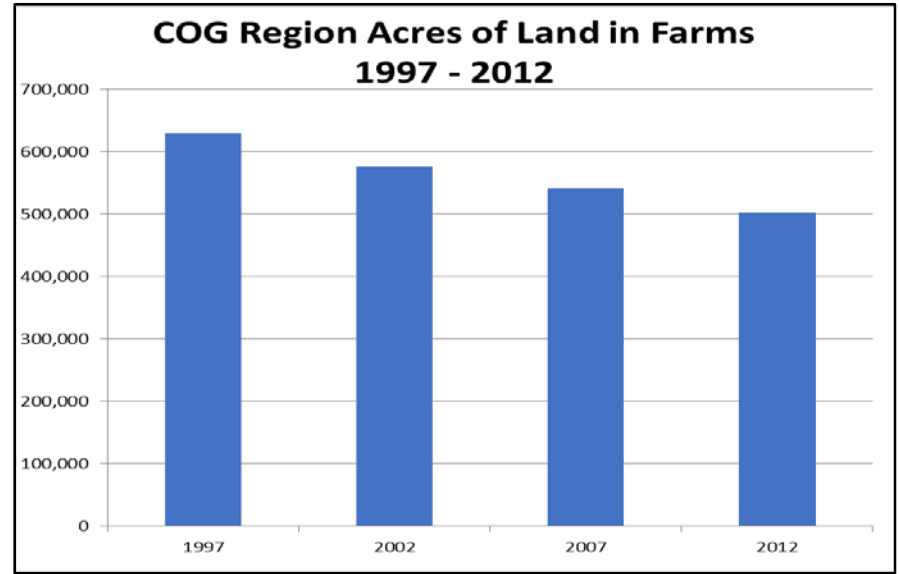


*Second annual meeting of Food Policy Councils from the COG region at the University of Maryland Terp Farm in Upper Marlboro, MD  
(Credit: Allison Lilly Tjaden/UMD)*

# Food and Agriculture in the Region



Above: *What Our Region Grows* Geography



## 2017 COG Region\*

est 218,271 acres of preserved farmland

4,616 farms (+ 23 urban farms)

150 + farmers markets

155 breweries, wineries, +

\* Locally collected, preliminary data from 2018 update to *What Our Region Grows* (Subject to change)

# What Our Region Grows: 2018 Update

- Grain dominates production
- Growth in on-farm craft beverage enterprises, vineyards, agritourism operations, urban agriculture
- Support services necessary for a healthy agricultural economy
- Declining production levels and dairy is in crisis
- Declining number of farms, farmers, and land in farms



# Declining Regional Self-Reliance

## 2012 Food Production and Demand Comparison for the Washington Ag Region

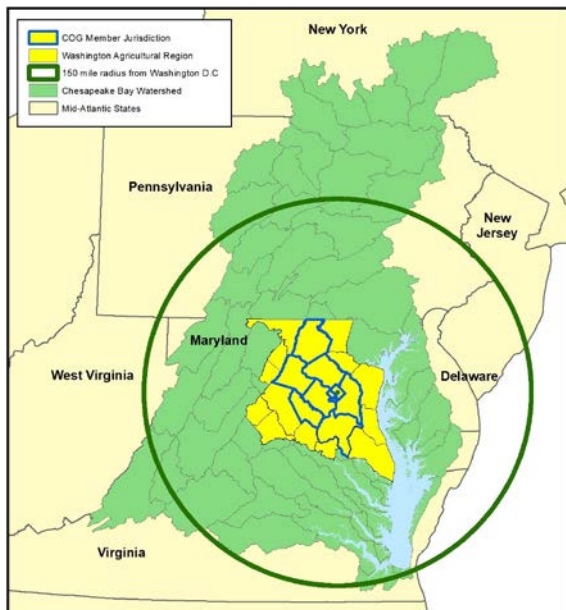
Food Product	Production (acres or animals)	Demand (acres or animals)	Percent Demand Fulfilled	Surplus/Deficit (acres or animals)
Apples	1,778	18,655	10%	-16,877
Blueberries	56	3,101	2%	-3,045
Strawberries	34	12,896	0%	-12,862
Beans	2,323	11,365	20%	-9,042
Potatoes	181	28,533	1%	-28,352
Pumpkins	588	3,167	19%	-2,579
Squash	91	3,404	3%	-3,313
Sweet Corn	1,346	24,106	6%	-22,760
Tomatoes	444	35,615	1%	-35,171
Wheat	63,079	238,021	27%	-174,942
Corn	169,121	36,564	463%	132,557
Beef	119,166	722,321	16%	-603,155
Chicken	65,357	74,169,582	0%	-74,104,225
Pork	36,966	1,905,264	2%	-1,868,298
Dairy	44,041	235,067	19%	-191,026

How are production, demand, and surplus/deficit measurements derived?



# Regional Self-Reliance: Mid-Atlantic

## 2012 Food Production and Demand Comparison for the Mid-Atlantic States



Above: *COG, Washington Ag, Chesapeake Bay, and Mid-Atlantic States. How should we measure our agricultural region?*

Food Product	Production (acres or animals)	Demand (acres or animals)	Percent Fulfilled	Surplus/Deficit (acres or animals)
Apples	77,930	123,178	63%	-45,248
Blueberries	11,477	27,333	42%	-15,856
Strawberries	2,694	121,695	2%	-119,001
Beans	68,377	95,668	71%	-27,291
Lima Beans	17,424	9,720	179%	7,704
Snap Beans	50,953	85,949	59%	-34,996
Potatoes	42,338	251,147	17%	-208,809
Pumpkins	18,798	23,534	80%	-4,736
Squash	10,001	22,062	45%	-12,061
Sweet Corn	69,827	168,894	41%	-99,067
Tomatoes	13,918	290,696	5%	-276,778
Wheat	793,529	2,295,482	35%	-1,501,953
Corn	2,747,728	322,063	853%	2,425,665
Soybean	2,166,219			
Beef	2,706,370	6,451,702	42%	-3,745,332
Chicken	1,016,516,580	640,495,616	159%	376,020,964
Pork	5,655,094	22,531,731	25%	-16,876,637
Dairy	1,309,874	1,967,082	67%	-657,208

# Regional Self-Reliance

- New terminology
- Factors driving decline
- Issues limiting analysis of *What Our Region Grows*
- What kind of food and agricultural future do we want?



Liked by [cultivatethecity](#), [grr429](#) and 96 others

[loveandcarrots](#) Have a RADish Friday! This week brought an explosion of growth at the [@tenatclarendon](#) rooftop farm. We take pride in sustainably producing organic vegetables for the residents. This is the [#futureoffood!](#) ❤️🌍

# Recommendations and Discussion

- Create a Regional Committee on Food and Agriculture
- Co-Host Regional Forums on Farm Viability, Land Preservation, and Next Generation Farmers
- Commission and Implement a Strategic Plan for Agriculture
- + 3 Additional Major Recommendations





## More Information

Jimmy Shue

[jshue@mwcog.org](mailto:jshue@mwcog.org)

Lindsay Smith

(202) 962-3307

[lsmith@mwcog.org](mailto:lsmith@mwcog.org)

Brian LeCouteur

(202) 962-3393

[blecouteur@mwcog.org](mailto:blecouteur@mwcog.org)

[mwcog.org](http://mwcog.org)

---

777 North Capitol Street NE, Suite 300

Washington, DC 20002



Metropolitan Washington  
Council of Governments