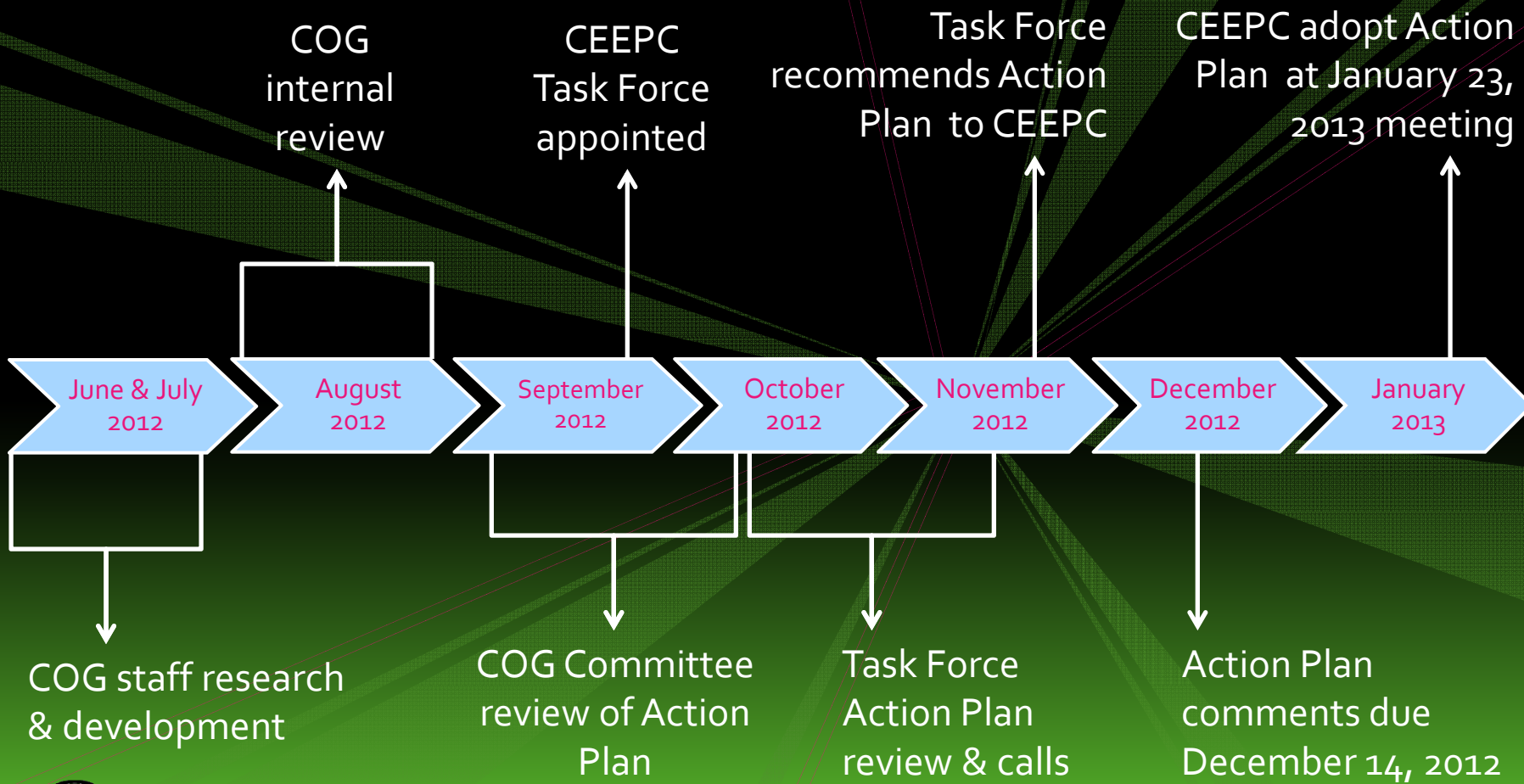


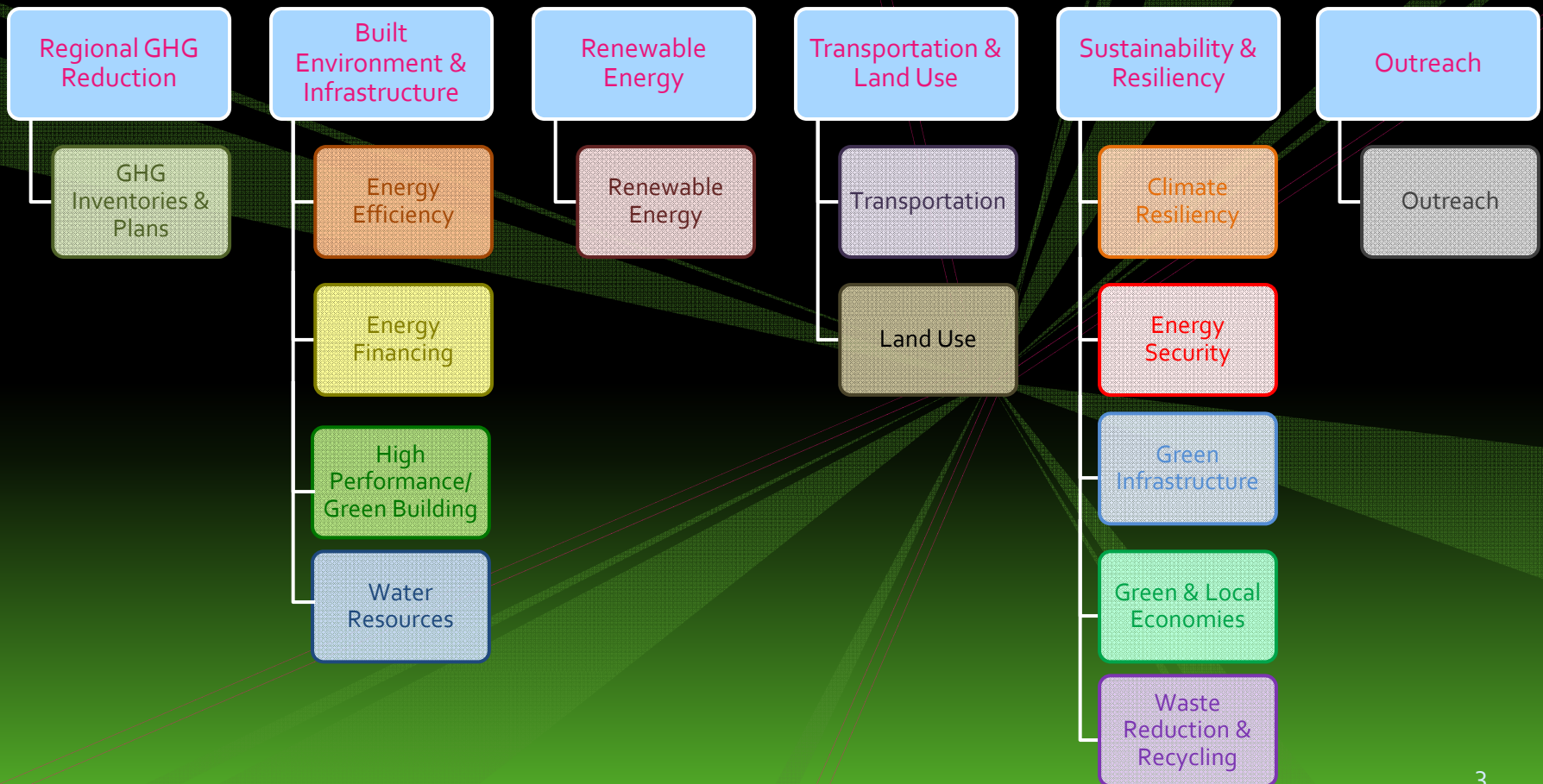
Metropolitan Washington Council of Governments
November 28, 2012

2013-2016 CEEPC ACTION PLAN

Timeline



2013-2016 Action Plan Categories



Sample Workplan Goals

Overarching Transportation & Land Use Goal:

To minimize the greenhouse gas impact of our transportation system, which contributes one third of regional emissions, by reducing vehicle miles travelled and increasing the use of alternative fuel and high efficiency vehicles.

Sample Transportation Goal:

100% of jurisdictions offer a commuter options program (telework, flex time, alternative work schedule, car pool, van pool, guaranteed ride home, bike/pedestrian, and/or financial incentive) for their employees.

Sample Land Use Goal:

100% of jurisdictions with land use authority adopt land use plans that allow for and incentivize walkable, higher density, mixed use, mixed income and/or transit oriented development in activity centers.

CEEPCTASK FORCE MEMBERS

Kambiz Agazi, *Fairfax County*
Christopher Berendt, *Drinker Biddle & Reath LLP*
Roger Berliner, *Montgomery County Council*
Mary Cheh, *Council of the District of Columbia*
Larisa Dobriansky, *Global Energy Network*
Stan Edwards, *Montgomery County*
Jay Fiset, *Arlington County Board*
Rachel Healy, *Washington Metropolitan Area Transit Authority*
John Lord, *Loudoun County Public Schools*
Samuel Moki, *Prince George's County*
Brendan Shane, *District Department of Environment*

Maia A. Davis
Metropolitan Washington Council of Governments
202-962-3227
mdavis@mwkog.org