

GOVERNMENT SHUTDOWN

Update on Regional Coordination, Analysis

Chuck Bean
COG Executive Director

Human Services Policy Committee
January 11, 2019

Government Shutdown

How many workers are affected?

1. 361,000 federal workers in the region (BLS)

Partial = ~40% impacted (145,000 workers) (Fuller)

2. More than 400,000 contracted employees (Fuller)

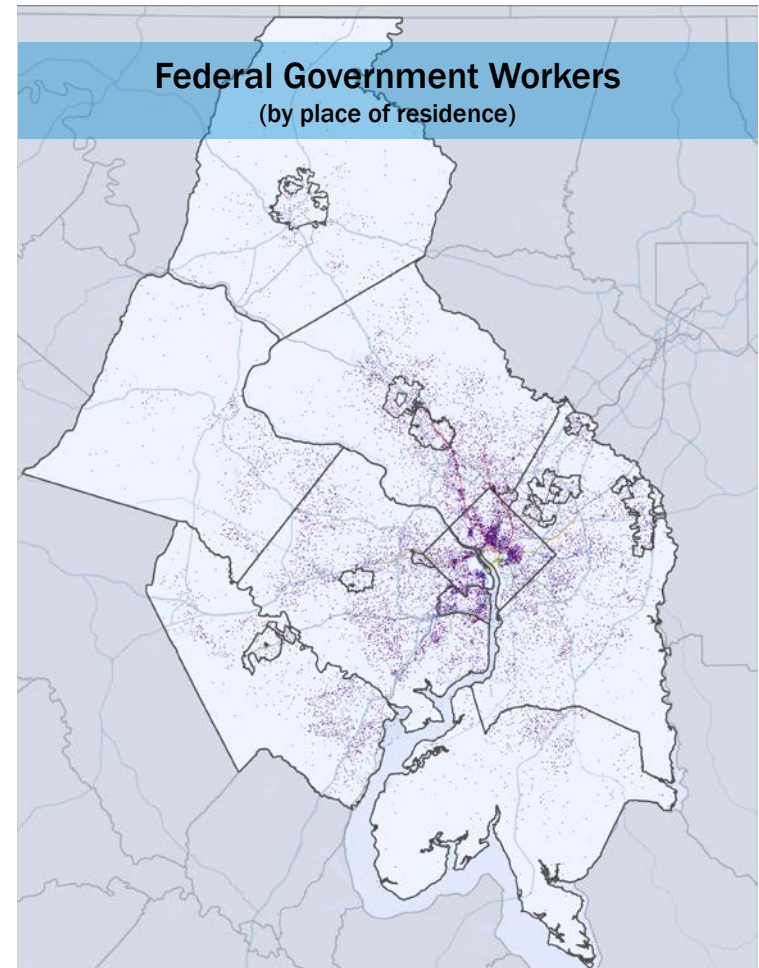
Partial = assuming another ~40% impacted (160,000 workers)

3. Service economy workers supporting federal agencies, contractors, and workers

Government Shutdown Analysis

Where do federal workers live?

- COG analysis of American Community Survey data illustrates how evenly federal workers are spread throughout the region.

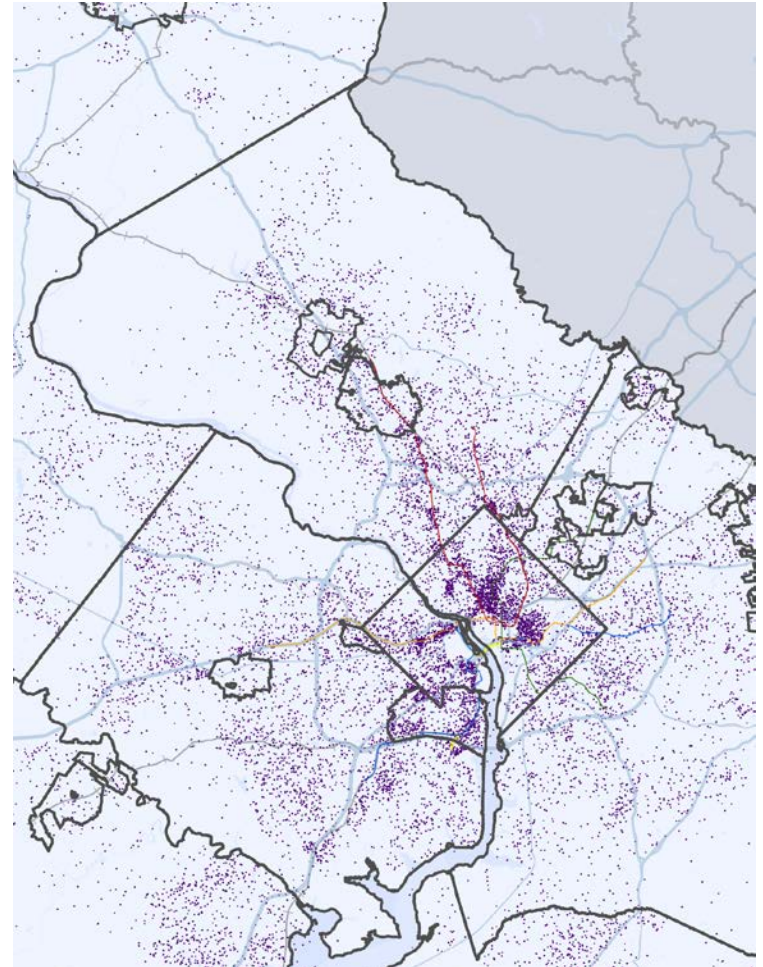


(COG analysis of 2013-2017 ACS Survey)

Government Shutdown Analysis

Where do federal workers live?

- COG analysis of American Community Survey data illustrates how evenly federal workers are spread throughout the region.



(COG analysis of 2013-2017 ACS Survey)

Government Shutdown Analysis

Where do federal workers live?

- COG analysis of American Community Survey data illustrates how evenly federal workers are spread throughout the region.

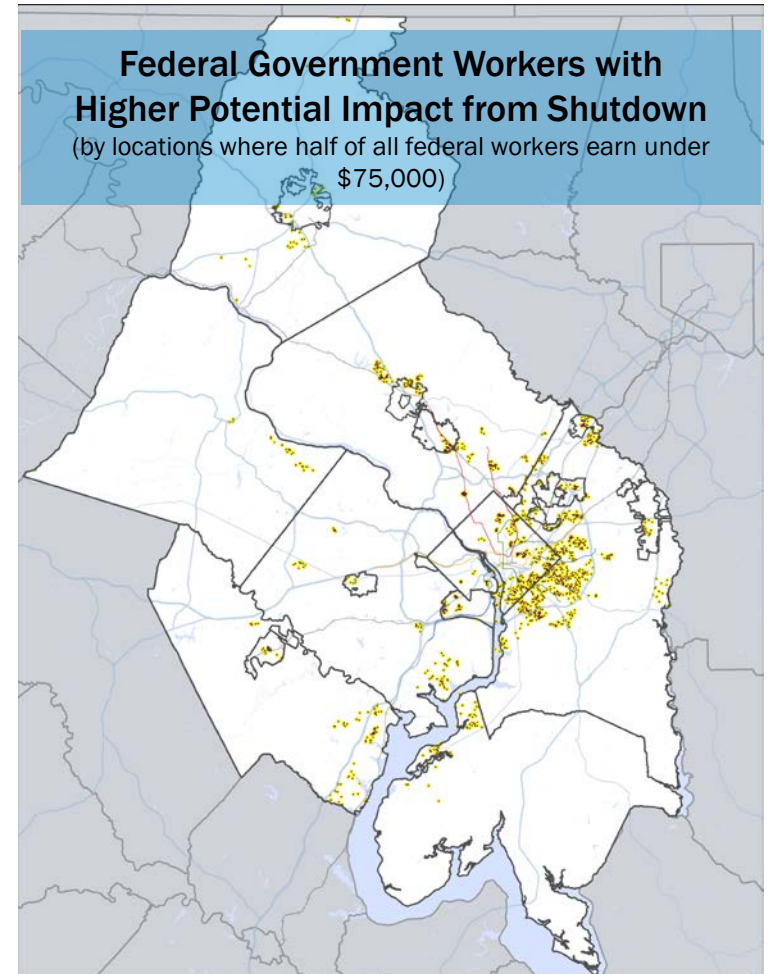
Jurisdiction	% of Regional Federal Workforce
District of Columbia	15.4%
Charles County	3.8%
Frederick County	2.8%
Montgomery County	18.2%
Prince George's County	17.1%
Suburban Maryland	41.9%
Alexandria	4.3%
Arlington County	6.4%
Fairfax	0.3%
Fairfax County	19.5%
Falls Church	0.4%
Loudoun County	4.1%
Manassas	0.3%
Manassas Park	0.2%
Prince William County	7.2%
Northern Virginia	42.7%
Region	100.0%

(COG analysis of 2013-2017 ACS Survey)

Government Shutdown Analysis

Where do the federal workers most vulnerable to the shutdown live?

- COG analysis of ACS data identifies census block groups in the region where half of federal workers earn under \$75,000.

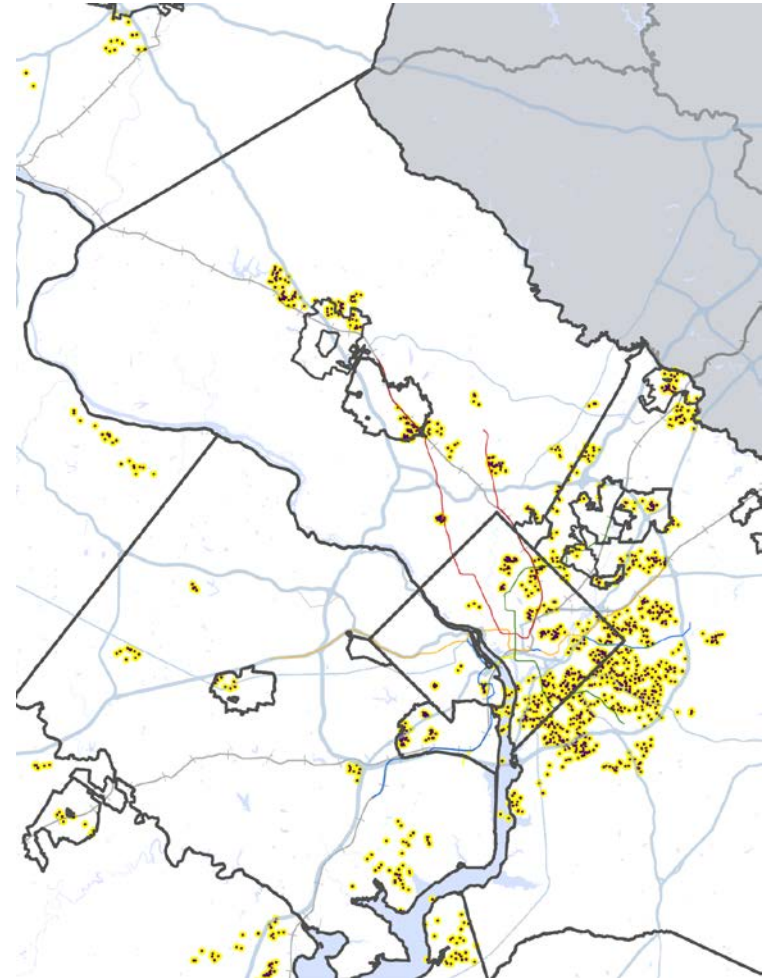


(COG analysis of 2013-2017 ACS Survey)

Government Shutdown Analysis

Where do the federal workers most vulnerable to the shutdown live?

- COG analysis of ACS data identifies census block groups in the region where half of federal workers earn under \$75,000.



(COG analysis of 2013-2017 ACS Survey)

Government Shutdown Analysis

Where do the federal workers most vulnerable to the shutdown live?

- COG analysis of ACS data identifies census block groups in the region where half of federal workers earn under \$75,000.

EXAMPLE: DISTRICT OF COLUMBIA		
Block group location*	Fed Workers	Median Fed Worker Earnings
Eckington	197	\$74,625
16th Street Heights	192	\$72,853
Rhode Island Ave Metro	188	\$60,625
H Street	164	\$74,803
Fort Totten	160	\$71,898
St. Elizabeths	147	\$55,739
Grant Park	140	\$54,625
Bellevue	135	\$65,833
Naylor Gardens	130	\$71,310
16th Street Heights	127	\$72,853

(COG analysis of 2013-2017 ACS Survey)

*Block groups are a statistical unit. Some communities are comprised of multiple block groups.

Government Shutdown Analysis

Where do the federal workers most vulnerable to the shutdown live?

- COG analysis of ACS data identifies census block groups in the region where half of federal workers earn under \$75,000.

EXAMPLE: PRINCE GEORGE'S COUNTY

Block group location*	Fed Workers	Median Fed Worker Earnings
Capitol Heights	418	\$73,857
Camp Springs	385	\$48,661
Laurel	356	\$64,000
Glassmanor	282	\$59,761
Oxon Hill	279	\$71,250
District Heights	272	\$64,972
Fort Washington	259	\$61,429
District Heights	256	\$58,007
Greenbelt	244	\$72,530
Temple Hills	224	\$51,875

(COG analysis of 2013-2017 ACS Survey)

*Block groups are a statistical unit. Some communities are comprised of multiple block groups.

Government Shutdown Analysis

Where do the federal workers most vulnerable to the shutdown live?

- COG analysis of ACS data identifies census block groups in the region where half of federal workers earn under \$75,000.

EXAMPLE: ALEXANDRIA		
Block group location*	Fed Workers	Median Fed Worker Earnings
Beauregard	335	\$66,676
Landmark-Van Dorn	293	\$70,455
Alexandria West	206	\$63,750
Seminary Hill	170	\$71,345
Landmark-Van Dorn	148	\$70,455
Alexandria West	115	\$63,750
Alexandria West	94	\$63,750
Shirley Duke	61	\$71,345
Dalecrest	57	\$71,345
Beauregard	55	\$66,676

(COG analysis of 2013-2017 ACS Survey)

*Block groups are a statistical unit. Some communities are comprised of multiple block groups.

Regional Response

- Local government actions (public outreach, easing of requirements for assistance)
- COG Board letter on shutdown
- Participation in call of area philanthropies led by the Community Foundation
- Outreach to utilities
- Coordination of meeting next week at COG co-sponsored with United Way

Chuck Bean

COG Executive Director
cbean@mwkog.org

mwkog.org

777 North Capitol Street NE, Suite 300
Washington, DC 20002



Metropolitan Washington
Council of Governments