

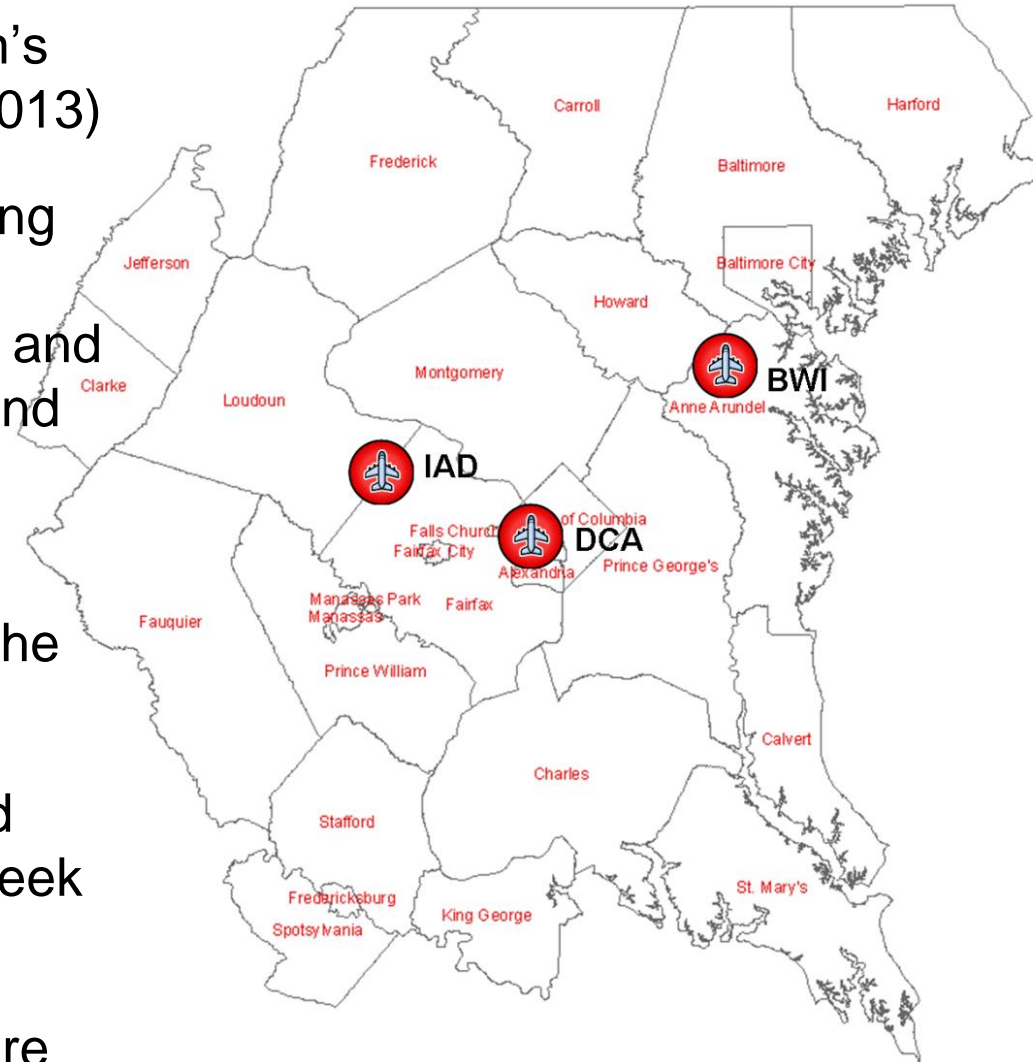
Preview of the 2015 Washington-Baltimore Regional Air Passenger Survey

TPB Technical Committee
October 2, 2015

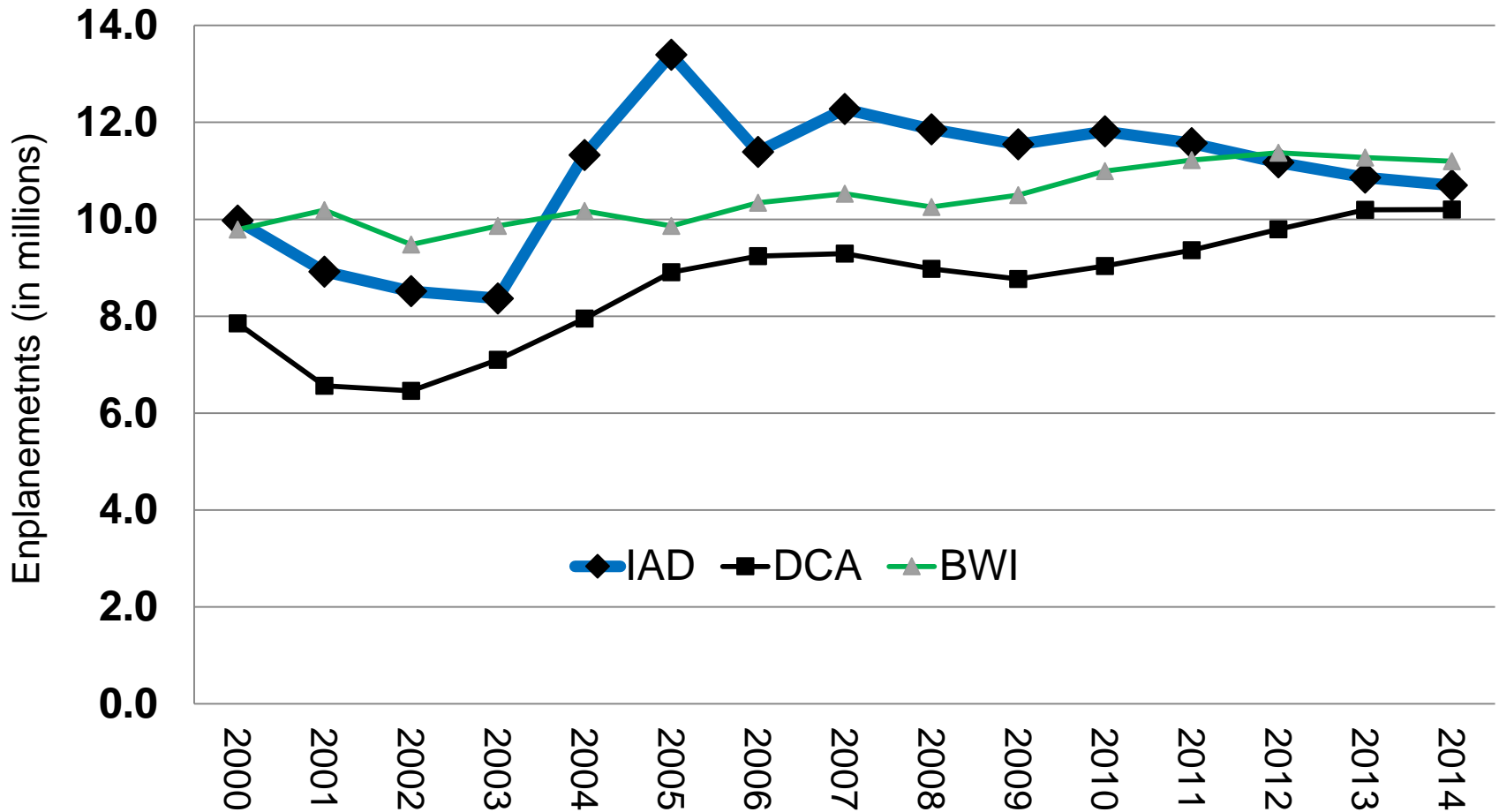
Richard I. Roisman, AICP
Manager, Planning Data Programs
roisman@mwcog.org

Having Three Commercial Airports is a Key Regional Asset

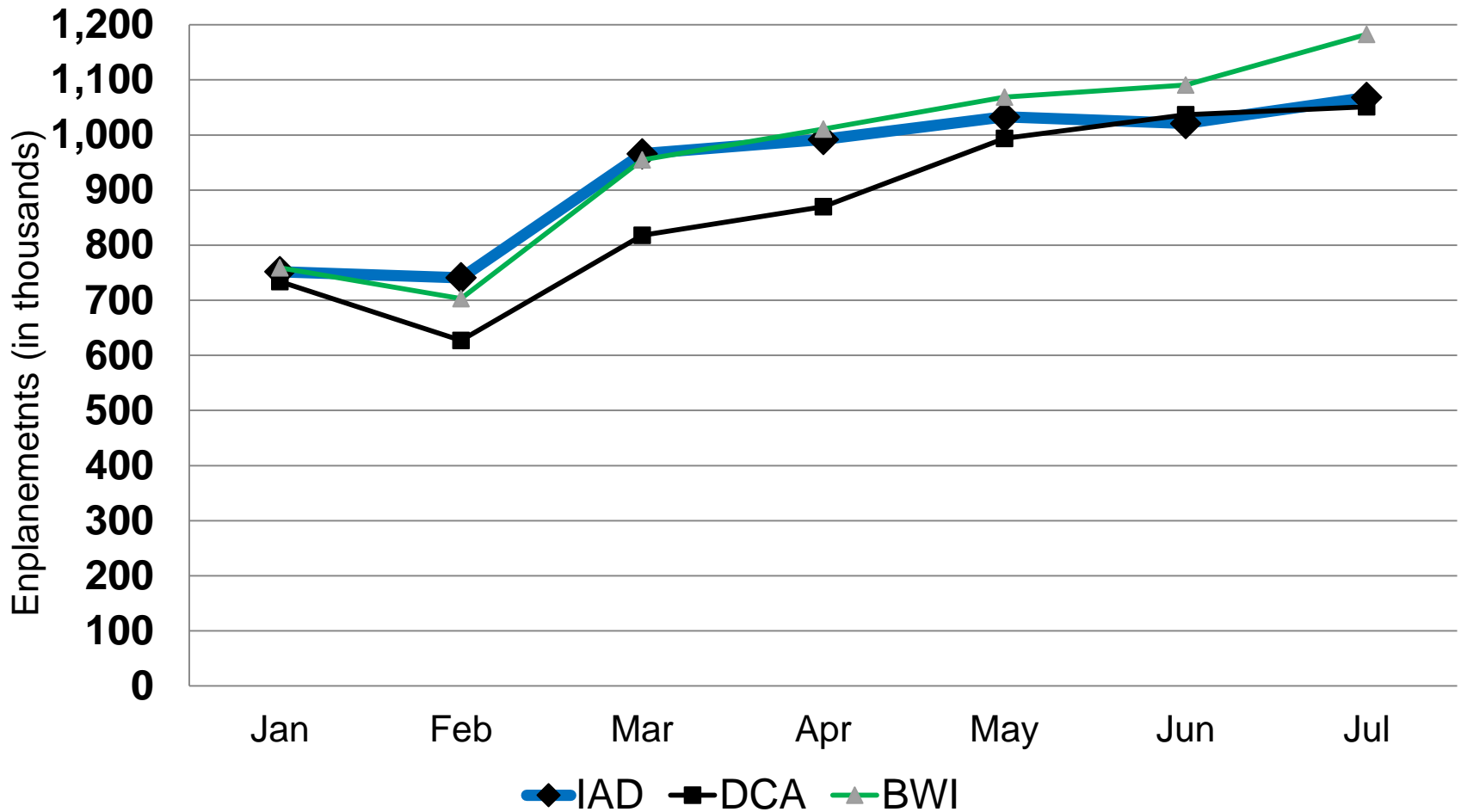
- ▶ Survey every two years at region's three commercial airports (last 2013)
- ▶ Collect information about changing travel patterns and user characteristics of air passengers and help determine airport terminal and groundside needs
- ▶ Input to airport ground access forecasts, which are an input to the regional travel demand model
- ▶ Random sample of domestic and international flights during two-week period in October
- ▶ Passengers surveyed at departure gates while waiting to board flights



Regional Air Passenger Enplanements Trend (2000 – 2014) by Airport



Regional Air Passenger Enplanements Trend (2015 YTD) by Airport



2015 Air Passenger Survey (1)

- ▶ A random sample of between 600 and 700 flights total at all three airports, both domestic and international
- ▶ Initial survey begins on October 7th and ends on October 20th
 - ▶ Waiting out anticipated Federal government shutdown
- ▶ Resurvey (for flights with low response) October 21st through November 3rd
 - ▶ Typically 5% of flights require resurvey

2015 Regional Air Passenger Survey (2)

- ▶ At-gate lobby interview (voluntary)
- ▶ Survey interviewers arrive 60-90 minutes prior to scheduled flight boarding
- ▶ Questionnaires distributed and collected before boarding
 - ▶ On-line survey option (smartphone, tablet, laptop)
 - ▶ On-line survey requires login information from questionnaire

Data Collected from Respondents

- ▶ Trip origin (address)
- ▶ Trip purpose
- ▶ Household size and income
- ▶ Respondent Age
- ▶ Reasons for choosing specific airport
- ▶ Jurisdiction of residence (city, state, zip, [country])
- ▶ Means of transportation to the airport

Changes to Means of Transportation Question (BWI)

7. What was your primary means of transportation to this airport today? (Please check ONE answer)

₀₁ Private Car

₀₇ Metrorail

₀₂ Rented Car

₀₈ Amtrak/MARC (BWI)

₀₃ Taxi

₀₉ Light Rail (BWI)

₀₄ Transportation Network Company (ex. Uber, Lyft)

₁₀ Metrobus/MTA Bus
Airport Bus

₀₅ Airport van/limo

₀₆ Hotel/Motel courtesy bus

₀₅ Other (Specify: _____)

Changes to Means of Transportation Question (DCA)

7. What was your primary means of transportation to this airport today? (Please check ONE answer)

₀₁ Private Car

₀₂ Rented Car

₀₃ Taxi

₀₄ Transportation Network Company (ex. Uber, Lyft)

₀₅ Airport van/limo

₀₆ Hotel/Motel courtesy bus

₀₉ Other (Specify: _____)

₀₇ Metrorail

₀₈ VRE

₁₀ Metrobus

Changes to Means of Transportation Question (IAD)

7. What was your primary means of transportation to this airport today? *(Please check ONE answer)*

₀₁ Private Car

₀₇ Metrorail

₀₂ Rented Car

₁₀ Metrobus / Silver Line

₀₃ Taxi

Express / Fairfax Connector

₀₄ Transportation Network Company (ex. Uber, Lyft)

₀₅ Airport van/limo

₀₆ Hotel/Motel courtesy bus

₀₈ Other (Specify: _____)

Reporting Air Passenger Survey Results

- ▶ Results are tabulated and reported to airport management as well as COG / TPB committees
- ▶ Responses are confidential: only airport management and planners get complete survey file
- ▶ Most responses summarized by question, by airport, or for all three airports combined
 - ▶ Example: # or % of respondents getting to DCA by rental car, personal car, taxi, Metrorail, etc.
- ▶ Survey responses geocoded (trip origins)
- ▶ General Findings Report and Geographic Findings Report

Please Help Us Improve Air Passenger Survey Response and Accuracy

- ▶ Publicize the survey to your staff, elected officials, colleagues, friends, and family
- ▶ Encourage them to complete a questionnaire if their departing flight from BWI, DCA, or IAD is randomly selected for our survey
- ▶ It only takes a few minutes while you are waiting at the gate!
- ▶ Report any issues with interviewers to COG
(Cell: 202-341-9306 or Office 202-962-3370)

**Thank you for your interest
and time**

