

Adaptation Clearinghouse Version 2.0

The Georgetown Climate Center

GEORGETOWN CLIMATE CENTER

- Convenes and serves as resource to states and local governments
- Brings together academics and policymakers to improve climate policy
- Informs the development of:
 - Legislation
 - Regulation
 - Transportation policy
 - Adaptation policy



Goals of AC2.0

- Manage information overload
- Generate expert feedback
- Facilitate peer networking
- Create entry points for different audiences
- Create a flexible and dynamic tool

Average Rating



My Networks

Local Government
Professionals



[VIEW NETWORK](#)

State Government
Professionals



[VIEW NETWORK](#)

My Sector Interests

Coastal



[VIEW SECTOR](#)

Transportation



[VIEW SECTOR](#)

AC2.0 FUNDERS

MacArthur Foundation

THE
KRESGE
FOUNDATION



The
ROCKEFELLER
FOUNDATION

AC2.0 PARTNERS



USDN | urban sustainability
directors network

AMERICAN SOCIETY OF
ADAPTATION PROFESSIONALS



Welcome to the Adaptation Clearinghouse

– an online database and networking site that serves policymakers and others who are working to help communities adapt to climate change.

Search the Clearinghouse

By Keyword

By State

SEARCH FOR: ○ RESOURCES ○ ORGANIZATIONS ○ USERS ○ ALL

Enter a keyword

SEARCH

Put the Power of the Adaptation Clearinghouse to Work for You

- Customize the Adaptation Clearinghouse to meet your needs
- Receive updates about new resources that match your interest areas
- Connect with other professionals

BECOME A MEMBER

LOGIN

Recently Added Resources

Resource

San Francisco Bay Clean Water, Pollution Prevention and Habitat Restoration Measure

June 7, 2016

The San Francisco Bay Clean Water, Pollution Prevention and Habitat Restoration Measure was approved by the nine county San Francisco Bay Area region of California and became law on June 7, 2016. The measure implements a regional tax - approved across the nine counties - to fund coastal habitat rehabilitation programs and adaptations to sea level rise and flooding. The purpose of the measure as stated is "to protect and restore San Francisco Bay to benefit future generations by reducing trash, pollution, and harmful toxins, improving water quality, restoring habitat for fish, birds, and wildlife, protecting communities from flood, and increasing shoreline public access and recreational areas."

Related Organizations: San Francisco Bay Restoration Authority

Resource Category: Law and Governance

Average Rating



SEE RESOURCE

LOGIN TO ADD TO MY RESOURCE LIST

Featured Sectors



COASTAL



ECOSYSTEMS



ENERGY



PUBLIC HEALTH



TRANSPORTATION



WATER



Welcome to the Adaptation Clearinghouse

– an online database and networking site that serves policymakers and others who are interested in climate change.

See the most recently published resources here

Search the

By State

SEARCH FOR

Enter a keyword

SEARCH

Put the Power of the Adaptation Clearinghouse to Work for You

- Customize the Adaptation Clearinghouse to meet your needs
- Receive updates about new resources that match your interest areas
- Connect with other professionals

BECOME A MEMBER

LOGIN

Recently Added Resources

Resource

San Francisco Bay Clean Water, Pollution Prevention and Habitat Restoration Measure

June 7, 2016

The San Francisco Bay Clean Water, Pollution Prevention and Habitat Restoration Measure was approved by the nine county San Francisco Bay Area region of California and became law on June 7, 2016. The measure implements a regional tax - approved across the nine counties - to fund coastal habitat rehabilitation programs and adaptations to sea level rise and flooding. The purpose of the measure as stated is "to protect and restore San Francisco Bay to benefit future generations by reducing trash, pollution, and harmful toxins, improving water quality, restoring habitat for fish, birds, and wildlife, protecting communities from flood, and increasing shoreline public access and recreational areas."

Related Organizations: San Francisco Bay Restoration Authority

Resource Category: Law and Governance

Average Rating



SEE RESOURCE

LOGIN TO ADD TO MY RESOURCE LIST

Featured Sectors



COASTAL



ECOSYSTEMS



ENERGY



PUBLIC HEALTH



TRANSPORTATION



WATER



Welcome to the Adaptation Clearinghouse

– an online database and networking site that serves policymakers and others who are working to help communities adapt to climate change.

Search the Clearinghouse

By Keyword

By State

SEARCH FOR: RESOURCES ORGANIZATIONS USERS ALL

Living Shorelines

SEARCH

Put the Power of the Adaptation Clearinghouse to Work for You

- Customize the Adaptation Clearinghouse to meet your needs
- Receive updates about new resources that match your interest areas
- Connect with other professionals

BECOME A MEMBER

LOGIN

Featured Sectors



COASTAL



ECOSYSTEMS



ENERGY



PUBLIC HEALTH



TRANSPORTATION



WATER

Recently Added Resources

Resource

San Francisco Bay Clean Water, Pollution Prevention and Habitat Restoration Measure

June 7, 2016

The San Francisco Bay Clean Water, Pollution Prevention and Habitat Restoration Measure was approved by the nine county San Francisco Bay Area region of California and became law on June 7, 2016. The measure implements a regional tax - approved across the nine counties - to fund coastal habitat rehabilitation programs and adaptations to sea level rise and flooding. The purpose of the measure as stated is "to protect and restore San Francisco Bay to benefit future generations by reducing trash, pollution, and harmful toxins, improving water quality, restoring habitat for fish, birds, and wildlife, protecting communities from flood, and increasing shoreline public access and recreational areas."

Related Organizations: San Francisco Bay Restoration Authority

Resource Category: Law and Governance

Average Rating



SEE RESOURCE

LOGIN TO ADD TO MY RESOURCE LIST

Enter in a key word
and hit "search"



Search Results for "Living Shorelines"

33 results

ALL RESOURCES ORGANIZATIONS USERS

SEARCH BY KEYWORD

Living Shorelines

APPLY FILTER

APPLY ADDITIONAL FILTERS

SORT RESULTS BY

Resource

Living Shorelines Initiative - Virginia

2011

Virginia Marine Resources Commission (VMRC) was directed by SB 964 in 2011 to develop and implement a general permit regulation that authorizes and encourages the use of living shorelines as the preferred alternative for stabilizing tidal shorelines.

Related Organizations: [Virginia Institute of Marine Science \(VIMS\) Center for Coastal Resources Management](#), [Virginia Marine Resources Commission](#), [Virginia Institute of Marine Science \(VIMS\)](#)

Resource Category: Solutions

SEE RESOURCE

LOGIN TO ADD TO MY RESOURCE LIST

Resource

Living Shorelines: From Barriers to Opportunities

June 18, 2015

A report from Restore America's Estuaries (RAE), "Living Shorelines: From Barriers to Opportunities," provides a national assessment of institutional barriers that are preventing broader use of living shorelines, and gives recommendations and strategies for progress.

See all relevant resources!

Put the... on
Cle...

- ...
- ...
- ...
- ...

BECOME A ... LOGIN

Featured Sectors



COASTAL



ECOSYSTEMS



ENERGY



PUBLIC HEALTH



TRANSPORTATION

Search Results for "Living Shorelines"

33 results

⊙ ALL ○ RESOURCES ○ ORGANIZATIONS ○ USERS

SEARCH BY KEYWORD

Living Shorelines

APPLY FILTER

APPLY ADDITIONAL FILTERS ▾

Filter by....

- + IMPACTS
- + JURISDICTIONAL FOCUS
- + REGION IMPACTED
- + RESOURCE CATEGORY
- + SECTORS
- + STATES IMPACTED

SORT RESULTS BY ▾

Expand list to
apply filters

SEE RESOURCE

LOGIN TO ADD TO MY RESOURCE LIST

Resource

Living Shorelines: From Barriers to Opportunities

June 18, 2015

A report from Restore America's Estuaries (RAE), "Living Shorelines: From Barriers to Opportunities," provides a national assessment of institutional barriers that are preventing broader use of living

Put the Power of the Adaptation Clearinghouse to Work for You

- Customize the Adaptation Clearinghouse to meet your needs
- Receive updates about new resources that match your interest areas
- Connect with other professionals

BECOME A MEMBER

LOGIN

Featured Sectors



COASTAL



ECOSYSTEMS



ENERGY



PUBLIC HEALTH



TRANSPORTATION

Apply as many filters as needed to get the specific results you want



2 results ALL RESOURCES ORGANIZATIONS USERS

FILTER BY JURISDICTIONAL FOCUS
Select local, state, regional, or national to filter this list

LOCAL NATIONAL REGIONAL STATE

FILTER BY STATES IMPACTED
Select states to filter this list

Maryland

SEARCH BY KEYWORD

Living Shorelines **APPLY FILTER**

APPLY ADDITIONAL FILTERS **SORT RESULTS BY**

Resources

Oxford, Maryland Stormwater Management and Shoreline Protection Fund, Ordinance 1403
May 13, 2014

On May 13, 2014 the town of Oxford, Maryland adopted a pioneering ordinance to create a Stormwater Management and Shoreline Protection (SMSP) Fund. Oxford commissioners unanimously agreed to increase the town's property tax rate in order to collect fees for the maintenance, enhancement, improvement and repair of the Town's stormwater management and shoreline protection improvements, facilities and systems. The fund will raise approximately \$100,000 per year to help mitigate ongoing and increasing impacts from flooding throughout the community.

Related Organizations: University of Maryland
Resource Category: Law and Governance

SEE RESOURCE **LOGIN TO ADD TO MY RESOURCE LIST**

Resources

A Method to Assess Climate-Relevant Decisions: Applications in the Chesapeake Bay (External Review Draft) **Average Rating** ★★★★★

- Customize the Adaptation Clearinghouse to meet your needs
- Receive updates about new resources that match your interest areas
- Connect with other professionals

BECOME A MEMBER **LOGIN**

Featured Sectors

- COASTAL**
- ECOSYSTEMS**
- ENERGY**
- PUBLIC HEALTH**
- TRANSPORTATION**
- WATER**

ADDITIONAL SECTORS

Networks

- GEORGETOWN CLIMATE CENTER**
- LOCAL GOVERNMENT PROFESSIONALS**
- STATE GOVERNMENT PROFESSIONALS**
- THE ASAP NETWORK PORTAL**

ADDITIONAL NETWORKS



TOOLS

+ ADD

SHARE

PRINT

Oxford, Maryland Stormwater Management and Shoreline Protection Fund, Ordinance 1403

On May 13, 2014 the town of Oxford, Maryland adopted a pioneering ordinance to create a Stormwater Management and Shoreline Protection (SMSP) Fund. Oxford commissioners unanimously agreed to increase the town's property tax rate in order to collect fees for the maintenance, enhancement, improvement and repair of the Town's stormwater management and shoreline protection improvements, facilities and systems. The fund will raise approximately \$100,000 per year to help mitigate ongoing and increasing impacts from flooding throughout the community.

While not addressing climate change or sea level rise directly, Oxford's fund will have the capacity to address coastal flood risks from tidal events, storm surges, and sea level rise through shoreline protection.

Creation of a the SMSP Fund will have a dedicated budget for maintenance of the current infrastructure and a long-term capital improvement plan addressing both current and future infrastructure improvements and upgrades. This infrastructure includes ditches, swales, culverts, drains, outfalls, tide gates, storage areas, bulkheads, living shorelines and other structures placed to control water levels.

The ordinance was established after a stormwater and flood risk study was conducted for the town. This year-long project was supported by the Wildlife Foundation and was a collaborative effort with the University of Maryland Environmental Finance Center, the Chesapeake Bay Foundation, Green. A chief recommendation of the study was the creation of a shoreline protection fund.

Publication Date: May 13, 2014

Related Organizations:

- University of Maryland

Sectors:

- Coastal
- Land use and built environment



GO TO RESOURCE

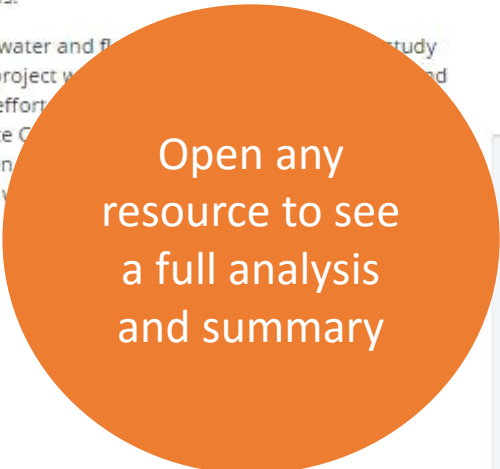
Your Rating



RATE THIS RESOURCE

Clearinghouse Members

SUBMIT A RESOURCE



TOOLS

+ ADD

SHARE

PRINT

Oxford, Maryland Stormwater Management and Shoreline Protection Fund, Ordinance 1403

On May 13, 2014 the town of Oxford, Maryland adopted a pioneering ordinance to create a Stormwater Management and Shoreline Protection (SMSP) Fund. Oxford commissioners unanimously agreed to increase the town's property tax rate in order to collect fees for the maintenance, enhancement, improvement and repair of the Town's stormwater management and shoreline protection improvements, facilities and systems. The fund will raise approximately \$100,000 per year to help mitigate ongoing and increasing impacts from flooding throughout the community.

While not addressing climate change or sea level rise directly, Oxford's fund will have the capacity to address coastal flood risks from tidal events, storm surges, and sea level rise through shoreline protection.

Creation of a the SMSP Fund will have a dedicated budget for maintenance of the current infrastructure and a long-term capital improvement plan addressing both current and future infrastructure improvements and upgrades. This infrastructure includes ditches, swales, culverts, drains, outfalls, tide gates, storage areas, bulkheads, living shorelines and other structures placed to control water levels.

The ordinance was established after a stormwater and flood management financing study was conducted for the town. This year-long project was sponsored by the National Fish and Wildlife Foundation and was a collaborative effort among the town of Oxford, the University of Maryland Environmental Finance Center, the Eastern Shore Land Conservancy, the Chesapeake Bay Foundation, George, Miles & Buhr LLC, and Preservation Green. A chief recommendation of the study was to create a stormwater management and shoreline protection fund.

Publication Date: May 13, 2014

Related Organizations:

- University of Maryland

Sectors:

- Coastal
- Land use and built environment



[GO TO RESOURCE](#)

Your Rating



RATE THIS RESOURCE

Click here to go to the original source

Resource

Climate Ready Boston

June 1, 2016

The City of Boston commissioned the *Climate Ready Boston* report to create a baseline understanding of how Boston will be influenced by climate change that can be used for comprehensive planning and generating solutions for resilient infrastructure in the short and long-term. The report uses various emissions scenarios to create an array of projections for how climate change will affect Boston throughout the century.

Related Organizations: City of Boston, Massachusetts, [Boston Green Ribbon Commission](#)

Resource Category: Assessments

SEE RESOURCE

REMOVE FROM MY RESOURCE LIST

Resource

Potential Increases in Hurricane Damage in the United States: Implications for the Federal Budget

June 2016

As requested by the Ranking Member of the Senate Committee on the Budget, this report analyzes the relationship between climate change and increased hurricane damage. In its analysis, CBO estimates annual federal spending for relief and recovery as a percentage of expected hurricane damage. It identifies three different strategies to help reduce the burden on federal aid: limiting greenhouse gas emissions, shifting more costs to state and local governments and private entities, and investing in structural changes to reduce vulnerability to hurricanes. The report includes projections of hurricane damage for 3 benchmark years: 2025, 2050, and 2075. It also explains the methodology of how the Congressional Budget Office (CBO) arrived at such projections. The strategies outlined in the report are then evaluated based on feasibility and expected level of success.

Related Organizations: Congressional Budget Office

Resource Category: Assessments

SEE RESOURCE

ADD TO MY RESOURCE LIST

Resource

Adaptation Case Study and Information Exchange

Developed under the [Adaptation Case Study and Information Exchange](#) initiative, the Adaptation Case Study and Information Exchange (ACSE) provides an interactive map linking adaptation strategies to case studies. The map includes information on drinking water, wastewater, and other infrastructure. The map also includes information on the corresponding organizations and resources. The map is available in both English and Spanish.

Related Organizations: [U.S. Environmental Protection Agency](#)

Resource Category: Solutions

SEE RESOURCE

ADD TO MY RESOURCE LIST

ADDITIONAL SECTORS

Networks

[GEORGETOWN CLIMATE CENTER](#)

[LOCAL GOVERNMENT PROFESSIONALS](#)

[STATE GOVERNMENT PROFESSIONALS](#)

[THE ASAP NETWORK PORTAL](#)

ADDITIONAL NETWORKS

Save a resource by adding to your own "clearinghouse"

TOOLS

+ ADD

SHARE

PRINT

You can also add it here

Potential Increases in Hurricane Damage to the Federal Budget: Implications for the Federal Budget

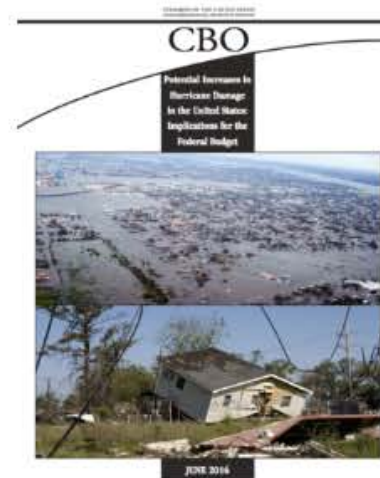
As requested by a member of the Senate Committee on the Budget, this report analyzes the potential for increased federal spending due to climate change and increased hurricane damage. In its analysis, CBO estimates annual federal spending for relief and recovery as a percentage of expected hurricane damage. It identifies three different strategies to help reduce the burden on federal aid: limiting greenhouse gas emissions, shifting more costs to state and local governments and private entities, and investing in structural changes to reduce vulnerability to hurricanes. The report includes projections of hurricane damage for 3 benchmark years: 2025, 2050, and 2075. It also explains the methodology of how the Congressional Budget Office (CBO) arrived at such projections. The strategies outlined in the report are then evaluated based on feasibility and expected level of success.

This report estimates the future cost of hurricane damages to the federal government by examining the two main factors contributing to greater projected levels of hurricane damage: climate change and coastal development. Climate change affects hurricane damage indirectly through sea-level rise, as rising seas promote larger storm surges that stretch farther inland. Additionally, the increasing coastal development puts more assets at risk. The report finds that U.S. counties classified as susceptible to hurricane damage grew 22 percent faster than the national average (Page 4). As a result, hurricanes of similar force today cause much higher levels of damage on areas for no other reason than because there are more assets in their path.

The CBO calculates future hurricane damage by first identifying the four different conditions that contribute to hurricane damage: Sea levels in different states, frequency of hurricanes of various intensities, population in coastal areas, and per capita income in coastal areas. The report points out that sea levels and frequency of hurricanes are a product of climate change, while population and per capita income in coastal areas are attributes of coastal development. Both climate change and coastal development can operate independently as well as in synchrony.

The CBO calculates expected hurricane damage under the current measurements of sea levels, hurricane frequency, population, and per capita income in coastal areas. The reference case depicts Florida as contributing 55% of the total damage in CBO's reference case, followed by Texas at 13% (For a more in-depth analysis of the CBO's reference case, refer to Figure 1 on page 6). The CBO then projects how the four factors will change over time to devise new conditions for years 2025, 2050, and 2075. The CBO uses these new conditions to calculate the expected damages for these benchmark years.

Future trends of federal spending in response to hurricane damage are estimated and described in the report. Utilizing estimates produced by the National Oceanic and Atmospheric Administration, from 2005-present, CBO identified that federal spending made up an average of 60% of hurricane damage assistance. Federal spending is expected



GO TO RESOURCE

Your Rating



RATE THIS RESOURCE

Clearinghouse Members

SUBMIT A RESOURCE

TOOLS

+ ADD

SHARE

PRINT

Potential Increases in Hurricane Damage in the United States: Implications for the Federal Budget

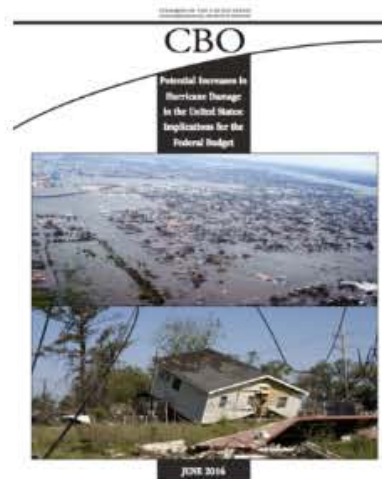
As requested by the Ranking Member of the Senate Committee on the Budget, this report analyzes the relationship between climate change and increased hurricane damage. In its analysis, CBO estimates annual federal spending for relief and recovery as a percentage of expected hurricane damage. It identifies three different strategies to help reduce the burden on federal aid: limiting greenhouse gas emissions, shifting more costs to state and local governments and private entities, and investing in structural changes to reduce vulnerability to hurricanes. The report includes projections of hurricane damage for 3 benchmark years: 2025, 2050, and 2075. It also explains the methodology of how the Congressional Budget Office (CBO) arrived at such projections. The strategies outlined in the report are then evaluated based on feasibility and expected level of success.

This report estimates the future cost of hurricane damages to the federal government by examining the two main factors contributing to greater projected levels of hurricane damage: climate change and coastal development. Climate change affects hurricane damage indirectly through sea-level rise, as rising seas promote larger storm surges that stretch farther inland. Additionally, the increasing coastal development puts more assets at risk. The report finds that U.S. counties classified as susceptible to hurricane damage grew 22 percent faster than the national average (Page 4). As a result, hurricanes of similar force today cause much higher levels of damage on areas for no other reason than because there are more assets in their path.

The CBO calculates future hurricane damage by first identifying the four different conditions that contribute to hurricane damage: Sea levels in different states, frequency of hurricanes of various intensities, population in coastal areas, and per capita income in coastal areas. The report points out that sea levels and frequency of hurricanes are a product of climate change, while population and per capita income in coastal areas are attributes of coastal development. Both climate change and coastal development can operate independently as well as in synchrony.

The CBO calculates expected hurricane damage under the current measurements of sea levels, hurricane frequency, population, and per capita income in coastal areas. The reference case depicts Florida as contributing 55% of the total damage in CBO's reference case, followed by Texas at 13% (For a more in-depth analysis of the CBO's reference case, refer to Figure 1 on page 6). The CBO then projects how the four factors will change over time to devise new conditions for years 2025, 2050, and 2075. The CBO uses these new conditions to calculate the expected damages for these benchmark years.

Future trends of federal spending in response to hurricane damage are estimated and described in the report. Utilizing estimates produced by the National Oceanic and Atmospheric Administration, from 2005-present, CBO identified that federal spending made up an average of 60% of hurricane damage assistance. Federal spending is expected



GO TO RESOURCE

Your Rating



RATE THIS RESOURCE

And rate it to help others

Clearinghouse Members

SUBMIT A RESOURCE



Welcome to the Adaptation Clearinghouse

– an online database and networking site that serves policymakers and others who are working to help communities adapt to climate change.

Search the Clearinghouse

SEARCH FOR: RESOURCES ORGANIZATIONS USER

Enter a keyword

By State

SEARCH

To Join, select the “Become a Member” button

Put the Power of the Adaptation Clearinghouse to Work for You

- Customize the Adaptation Clearinghouse to meet your needs
- Receive updates about new resources that match your interest areas
- Connect with other professionals

BECOME A MEMBER

LOGIN

Recently Added Resources

Resource

San Francisco Bay Clean Water, Pollution Prevention and Habitat Restoration Measure

June 7, 2016

The San Francisco Bay Clean Water, Pollution Prevention and Habitat Restoration Measure was approved by the nine county San Francisco Bay Area region of California and became law on June 7, 2016. The measure implements a regional tax - approved across the nine counties - to fund coastal habitat rehabilitation programs and adaptations to sea level rise and flooding. The purpose of the measure as stated is “to protect and restore San Francisco Bay to benefit future generations by reducing trash, pollution, and harmful toxins, improving water quality, restoring habitat for fish, birds, and wildlife, protecting communities from flood, and increasing shoreline public access and recreational areas.”

Related Organizations: San Francisco Bay Restoration Authority

Resource Category: Law and Governance

Average Rating



SEE RESOURCE

LOGIN TO ADD TO MY RESOURCE LIST

Featured Sectors



COASTAL



ECOSYSTEMS



ENERGY



PUBLIC HEALTH



TRANSPORTATION



WATER



Log in

EMAIL ADDRESS *

PASSWORD

The password field is case sensitive.


REMEMBER ME ON THIS COMPUTER

SUBMIT

[FORGOT YOUR PASSWORD?](#)

OR

 Sign in with LinkedIn



If you had an account in the old system, you will need to reset your password

FOR FREE



Otherwise, just fill out this form



Register

FIRST NAME

MIDDLE NAME

LAST NAME

JOB TITLE

EMPLOYER

[Click here if your employer isn't in the list.](#)

EMAIL

RESOURCES YOU HAVE AUTHORED

PASSWORD

CONFIRM PASSOWRD

I AGREE

By creating a free Adaptation Clearinghouse account, I agree to the site's basic terms and conditions which are available [here](#). I may cancel my account at any time.

REGISTER



Melissa Deas

INSTITUTE ASSOCIATE AT THE GEORGETOWN CLIMATE CENTER

My Interest Areas

+ ADD AN INTEREST AREA

SUBSCRIBE TO EMAIL UPDATES

 EDIT PROFILE

 SHARE YOUR PROFILE

LOGOUT

You can add more info and a picture by clicking on this button

New Resources

My Resource List

Network Activity

Authored Resources

Rate Resources

+ ADD A RESOURCE

New Resources

Below is a list of resources published in the past six months that are connected to your interest areas. You may filter the list to view resources from a particular interest area by using the tabs below.

There are no new resources that match your selected interest areas. Please consider [adding new interest areas](#).



Melissa Deas

INSTITUTE ASSOCIATE AT THE GEORGETOWN CLIMATE CENTER

My Interest Areas

+ ADD AN INTEREST AREA

SUBSCRIBE TO EMAIL UPDATES

EDIT PROFILE

SHARE YOUR PROFILE

LOGOUT

And you can start getting a feed of newly published resources by adding interest areas here

New Resources

My Resources

My Resources

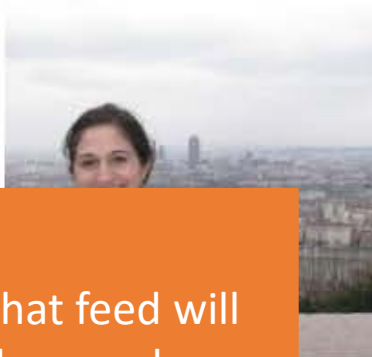
Rate Resources

+ ADD A RESOURCE

New Resources

Below is a list of resources published in the past six months that are connected to your interest areas. You may filter the list to view resources from a particular interest area by using the tabs below.

There are no new resources that match your selected interest areas. Please consider [adding new interest areas](#).



Melissa Deas

INSTITUTE ASSOCIATE

My Networks

Local Government Professionals, State Government Professionals, The ASAP Network Portal

My Interest Areas

✕ CALIFORNIA

✕ DISTRICT OF COLUMBIA

✕ FUNDING

✕ PLANNING

✕ AT-RISK COMMUNITIES

✕ COASTAL

✕ ECOSYSTEMS

✕ ENERGY

✕ LAND USE

✕ PUBLIC HEALTH

✕ TRANSPORTATION

✕ URBAN

✕ WATER

+ ADD AN INTEREST AREA

SUBSCRIBE TO EMAIL UPDATES

That feed will
show up here

New Resources

My Resource List

Network Activity

Authored Resources

Rate Resources

+ ADD A RESOURCE

New Resources

Below is a list a resources published in the past six months that are connected to your interest areas. You may filter the list to view resources from a particular interest area by using the tabs below.

ALL NEW RESOURCES

CALIFORNIA

DISTRICT OF COLUMBIA

FUNDING

PLANNING

VULNERABLE POPULATIONS

Resource

San Francisco Bay Clean Water, Pollution Prevention and Habitat Restoration Measure

June 7, 2016

The San Francisco Bay Clean Water, Pollution Prevention and Habitat Restoration Measure was approved by the nine county San Francisco Bay Area region of California and became law on June 7, 2016. The measure implements a regional tax - approved across the nine counties - to fund coastal habitat rehabilitation programs and adaptations to sea level rise and flooding. The purpose of the measure as stated is "to protect and restore San Francisco Bay to benefit future generations by reducing trash, pollution, and harmful toxins, improving water quality, restoring habitat for fish, birds, and wildlife, protecting communities from flood, and increasing shoreline public access and recreational areas."

Average Rating



My Resource List

The queue below contains all resources that you have added to your personal "Resource List."

CLEAR LIST

SORT BY ▾

Resource

Climate Ready Boston

June 1, 2016

The City of Boston commissioned the *Climate Ready Boston* report to create a baseline understanding of how Boston will be influenced by climate change that can be used for comprehensive planning and generating solutions for resilient infrastructure in the short and long-term. The report uses various emissions scenarios to create an array of projections for how climate change will affect Boston throughout the century.

Related Organizations: City of Boston, Massachusetts, Boston Green Ribbon Commission

Resource Category: Assessments

SEE RESOURCE

REMOVE FROM MY RESOURCE LIST

Resource

Planning for a New Energy and Climate Future

2010

'Planning for a New Energy and Climate Future' was prepared by the American Planning Association in collaboration with the Environmental and Energy Study Institute, the National Oceanic and Atmospheric Administration, and the University of North Carolina Asheville. This report provides a framework for how to integrate energy and climate into the planning process, and offers strategies for communities to address energy and climate change across a variety of issues, including development, transportation, and economic development. Case studies illustrate communities that have already begun taking steps in these areas. [View full report for purchase.](#)

Related Organizations: University of North Carolina, University of North Carolina Asheville, Environmental and Energy Study Institute (EESI), American Planning Association APA, National Oceanic and Atmospheric Administration (NOAA)

Authors: Suzanne Rynne, Jan Mueller, Scott Shuford

Resource Category: Planning

SEE RESOURCE

REMOVE FROM MY RESOURCE LIST

Average Rating



Resource

Massachusetts Wildlife Climate Action Tool

November 23, 2015

The Massachusetts Wildlife Climate Action Tools provides information on climate change impacts on the state's species and habitats; as well as adaptation strategies and actions based on those impacts. The online tool is focused on fish and wildlife species, forests and forestry practices, landscape and conservation planning, and related impacts on roads and culverts), land protection, and conservation planning.

Related Organizations: Massachusetts Division of Fisheries and Wildlife, Department of the Interior (DOI), Northeast Climate Science Center (CSC), University of Massachusetts, U.S. Geological Survey (USGS)

Resource Category: Data and tools

SEE RESOURCE

REMOVE FROM MY RESOURCE LIST

Average Rating



Any resources
you saved can
be found here

Rate Resources

Below are resources you have accessed from the Adaptation Clearinghouse. Help inform other adaptation professionals by taking a moment to rate these resources.

Resource

Adaptation Exchange

Developed by the U.S. Environmental Protection Agency (EPA), the Adaptation Exchange is a website that provides information on adaptation strategies and tools. Each utility, community, or organization can create a profile and share their experiences and lessons learned.

Related Organizations:



RATE THIS RESOURCE

SEE RESOURCE

Resource

Sustainable Water Infrastructure Website

May 2016

The Sustainable Water Infrastructure Website, created by the U.S. Environmental Protection Agency, consists of a collection of resources relating to sustainable water infrastructure (SWI). The website aims to educate users on the variety of components that make up sustainable water infrastructure, and to provide data and tools to help state and local officials implement SWI.

Related Organizations: U.S. Environmental Protection Agency (EPA)



RATE THIS RESOURCE

SEE RESOURCE

Resource

Climate Resilience Evaluation and Awareness Tool Version 3.0 Methodology Guide

May 2016

This guide is a supplement describing how to use the EPA's *Climate Resilience Evaluation and Awareness Tool* (CREAT) Version 3.0, a tool designed for local drinking water, wastewater, and stormwater utilities to conduct climate change risk assessments. CREAT and this guide are part of the EPA's Climate Water Ready Utilities suite of resources.

Related Organizations: U.S. Environmental Protection Agency (EPA)



RATE THIS RESOURCE

SEE RESOURCE

Resource

Resilient Midwestern Cities Improving Equity in a Changing Climate

April, 2016

Developed by the Center for American Progress, *Resilient Midwestern Cities: Improving Equity in a Changing Climate* provides users with guidance on how to concurrently address climate change and equity issues by implementing climate change resiliency measures in low-income areas. The report showcases existing initiatives employed in 5 Midwestern cities, and draws out recommendations for further action.

Authors: Cathleen Kelly, Miranda Peterson, Erin Auel, Philine Qian, Gwynne Taraska

Related Organizations: Center for American Progress



RATE THIS RESOURCE

SEE RESOURCE

You can also
rate resources
you viewed
here

Sectors

This page allows you to explore the resources in the Adaptation Clearinghouse by sector. Each sector page includes curated lists of resources on adaptation efforts in specific sectors.

Sectors covered include agriculture and food, business, coastal, ecosystems, emergency preparedness, energy, land use, public health, transportation, water, and more.

These pages provide easy-to-navigate lists of resources to help policymakers assess vulnerabilities, develop plans, and respond to climate change impacts in that sector. These pages also allow users to see resources that are most popular among adaptation experts.

Put the Power of the Adaptation Clearinghouse to Work for You

- Customize the Adaptation Clearinghouse to meet your needs
- Receive updates about new resources that match your interest areas
- Connect with other professionals

BECOME A MEMBER

LOGIN

All Sectors



Agriculture & Food

Climate change is changing our assumptions about agriculture and food production. This page includes resources to help policymakers adapt to climate change impacts to the agricultural sector and to food systems.

If you are interested in the agricultural and food sectors, please sign up for email updates to receive monthly notifications about all of the latest agricultural and adaptation resources.

VIEW SECTOR



Business

This page includes resources to help policymakers and businesses understand, plan, and prepare for the impacts of climate change to the business sector, including risks to operations, investments, and profits. Resources describe how climate change consideration in business decisions can promote long-term economic health.

If you are interested in adaptation efforts in the business sector, please sign up for email updates to receive monthly notifications about all the latest business resources.

VIEW SECTOR



Coastal

Climate change will have profound effects on resources, communities, and infrastructure in coastal regions. This page includes resources to help policymakers understand, plan, and prepare for the impacts of climate change to the coastal sector, including coastal communities and infrastructure, and coastal and marine ecosystems. Tabs include climate science & tools, plans, planning guides, funding programs, and other resources tailored for policymakers working in the coastal sector.

If you are interested in coastal issues, please sign up for email updates to receive monthly notifications about all the latest coastal resources.

VIEW SECTOR



Ecosystems

This page includes resources to help policymakers understand, plan, and prepare for the impacts of climate change on biodiversity and ecosystems including fish and fisheries, forests, oceans, and wildlife. It also includes resources tailored for natural resource managers pursuing land management and conservation strategies to prepare for the impacts of climate change.

If you are interested in biodiversity and ecosystems issues, please sign up for email updates to receive monthly notifications about all the latest resources in this sector.

VIEW SECTOR

Select the sectors tab to find sector portals



Coastal

Climate change will have profound effects on resources, communities, and infrastructure in coastal regions. This page includes resources to help policymakers understand, plan, and prepare for the impacts of climate change to the coastal sector, including coastal communities and infrastructure, and coastal and marine ecosystems. Tabs include climate science & tools, plans, planning guides, funding programs, and other resources tailored for policymakers working in the coastal sector.

If you are interested in coastal issues, please sign up for email updates to receive monthly notifications about all the latest coastal resources.

[VIEW SECTOR](#)



Ecosystems

This page includes resources to help policymakers understand, plan, and prepare for the impacts of climate change on biodiversity and ecosystems including fish and fisheries, forests, oceans, and wildlife. It also includes resources tailored for natural resource managers pursuing land management and conservation strategies to prepare for the impacts of climate change.

If you are interested in biodiversity and ecosystems issues, please sign up for email updates to receive monthly notifications about all the latest resources in this sector.

[VIEW SECTOR](#)



Emergency Preparedness

This page includes resources to help policymakers assess and adapt emergency preparedness strategies in the face of climate change impacts.

If you are interested in emergency preparedness issues, please sign up for email updates to receive monthly notifications about all the latest resources on adaptation and emergency preparedness.

[VIEW SECTOR](#)



Energy

This page includes resources to help policymakers understand, plan, and prepare for impacts of climate change to the energy sector, ranging from changes in energy demand to preparing for threats to energy infrastructure.

If you are interested in adaptation efforts in the energy sector, please sign up for email updates to receive monthly notifications about all the latest energy resources.

[VIEW SECTOR](#)



Land Use

Land use involves decisions about the use and development of land. Impacts from climate change (increasing flooding, drought, and urban heat) will affect how and where communities build. This page includes resources on how to address climate change impacts to the built environment and different land uses.

If you are interested in land use issues, please sign up for email updates to receive monthly notifications about all the latest resources and adaptation and land use.

[VIEW SECTOR](#)



Public Health

This page includes resources to help policymakers understand, plan, and prepare for the impacts of climate change on public health systems and vulnerable populations, including planning guides, reports on public health impacts, and best practices for public health response.

If you are interested in adaptation in the public health sector, please sign up for email updates to receive monthly notifications about all of the latest public health resources.

[VIEW SECTOR](#)



Transportation

Climate change will challenge the ability of transportation agencies to maintain a state of good repair of transportation assets, but many are thinking proactively about how to plan for these impacts and design transportation systems to be more prepared for and resilient to climate change. This page includes resources to help policymakers understand, plan, and prepare for the impacts of climate change to transportation systems and assets.

[VIEW SECTOR](#)



Water

This page includes resources to help policymakers understand, plan, and prepare for impacts of climate change to the water sector including plans, policies, and tools.

If you are interested in adaptation efforts in the water sector (including efforts to adapt to changes in water supply, water quality, and impacts to water infrastructure), please sign up for email updates to receive monthly notifications about all the latest water resources.

[VIEW SECTOR](#)

Choose the sector you want to explore



Public Health

This page includes resources to help policymakers understand, plan, and prepare for the impacts of climate change on public health systems and vulnerable populations, including planning guides, reports on public health impacts, and best practices for public health response.

TURN ON EMAIL NOTIFICATIONS

If you are interested in adaptation in the public health sector, please sign up for email updates to receive monthly notifications about all of the latest public health resources.

Put the Power of the Adaptation Clearinghouse to Work for You

- Customize the Adaptation Clearinghouse to meet your needs
- Receive updates about new resources that match your interest areas
- Connect with other professionals

BECOME A MEMBER

LOGIN

Public Health Resources

If you want occasional updates select this button

Popular Public Health Resources

The resources below are popular among Clearinghouse users. Users may influence this list by rating resources. Just click on a resource and assign it a 1 (low) to 5 (high) star rating. The highest ratings (4 and 5) should be granted to resources that you have found useful in your own work.

5 results are shown below:

SORT BY ▾

Resource

Oregon Climate and Health Profile Report

September 25, 2014

The 'Oregon Climate and Health Profile Report' from the Oregon Health Authority (OHA) Public Health Division outlines the health risks that may increase with climate change, and describes the populations who are most vulnerable to these risks in Oregon. The report presents a broad, statewide assessment of public health demographic, geographic and occupational vulnerability to climate change risks.

Related Organizations: Oregon Health Authority Public Health Division

Resource Category: Assessments

SEE RESOURCE

LOGIN TO ADD TO MY RESOURCE LIST

Average Rating



ADAPTATION STRATEGIES

LAWS & REGULATIONS

FUNDING

ORGANIZATIONS

GEOGRAPHIC SEARCH

Receive New Resources by Email

Receive new resources from the public health sector in a monthly

Resource

CDC: Assessing Vulnerability to Climate Change - A Guide for Health Departments

Average Rating





Public Health

This page includes resources to help policymakers understand, plan, and prepare for the impacts of climate change on public health systems and vulnerable populations, including planning guides, reports on public health impacts, and best practices for public health response.

TURN ON EMAIL NOTIFICATIONS

If you are interested in adaptation in the public health sector, please sign up for email updates to receive monthly notifications about all of the latest public health resources.

Put the Power of the Adaptation Clearinghouse to Work for You

- Customize the Adaptation Clearinghouse to meet your needs
- Receive updates about new resources that match your interest areas
- Connect with other professionals

BECOME A MEMBER

LOGIN

Public Health Resources

POPULAR RESOURCES

PUBLIC HEALTH BASICS

SCIENCE AND TOOLS

PLANS

PLANNING GUIDES

EDUCATION & COMMUNICATION

ADAPTATION STRATEGIES

LAWS & REGULATIONS

FUNDING

ORGANIZATIONS

GEOGRAPHIC SEARCH

Popular Public Health Resources

The resources below are popular among Clearinghouse users. Users may influence this list by rating resources. Just click on a resource and assign it a 1 (low) to 5 (high) star rating. The highest ratings (4 and 5) should be granted to resources that you have found useful in your own work.

5 results are shown below:

SORT BY ▾

Resource: Oregon Health Authority (OHA) September 2017
The Oregon Climate and Public Health Authority (OHA) and Public Health Division of Oregon describes the population assessment of public health vulnerability to climate change risks. The report presents a broad, statewide assessment of public health vulnerability to climate change risks.

Related Organizations: Oregon Health Authority Public Health Division

Resource Category: Assessments

SEE RESOURCE

LOGIN TO ADD TO MY RESOURCE LIST

Average Rating



Resource

CDC: Assessing Vulnerability to Climate Change - A Guide for Health Departments

Average Rating



Receive New Resources by Email

Receive new resources from the public health sector in a monthly

You can explore the sector portal using these tabs



Public Health

This page includes resources to help policymakers understand, plan, and prepare for the impacts of climate change on public health systems and vulnerable populations, including planning guides, reports on public health impacts, and best practices for public health response.

If you are interested in adaptation in the public health sector, please sign up for email updates to receive monthly notifications about all of the latest public health resources.

TURN ON EMAIL NOTIFICATIONS

Put the Power of the Adaptation Clearinghouse to Work for You

- Customize the Adaptation Clearinghouse to meet your needs
- Receive updates about new resources that match your interest areas
- Connect with other professionals

BECOME A MEMBER

LOGIN

Public Health Resources

POPULAR RESOURCES

Popular Public Health Resources

The resources below are popular among Clearinghouse users. Use the star rating system to rate a resource and assign it a 1 (low) to 5 (high) star rating. The higher the rating, the more useful the resource is to you.

SCIENCE AND TOOLS

PLANS

PLANNING GUIDES

EDUCATION & COMMUNICATION

ADAPTATION STRATEGIES

LAWS & REGULATIONS

FUNDING

ORGANIZATIONS

GEOGRAPHIC SEARCH

Resource

Oregon Climate and Health Profile Report

September 25, 2014

The 'Oregon Climate and Health Profile Report' from the Oregon Health Authority (OHA) Public Health Division outlines the health risks that may increase with climate change, and describes the populations who are most vulnerable to these risks in Oregon. The report presents a broad, statewide assessment of public health demographic, geographic and occupational vulnerability to climate change risks.

Related Organizations: Oregon Health Authority Public Health Division

Resource Category: Assessments

SEE RESOURCE

LOGIN TO ADD TO MY RESOURCE LIST

Average Rating



Resource

CDC: Assessing Vulnerability to Climate Change - A Guide for Health Departments

Average Rating



Popular Resources shows sector specific resources rated highly by AC users



Receive New Resources by Email

Receive new resources from the public health sector in a monthly

POPULAR RESOURCES

PUBLIC HEALTH BASICS

SCIENCE AND TOOLS

PLANS

PLANNING GUIDES

EDUCATION & COMMUNICATION

ADAPTATION STRATEGIES

LAWS & REGULATIONS

FUNDING

ORGANIZATIONS

GEOGRAPHIC SEARCH

Learn more about health and adaptation from the U.S. Climate Resilience Toolkit



U.S. Climate Resilience Toolkit

(EDIT)

The "Basics" tab provides an intro to the sector and adaptation



Climate Change in the Public Health Sector (edit)

...across the board, with disproportionate impacts on particularly children, low-income communities, the homeless, and communities of color. ...better understand how climate change will affect the public health sector.

Resource

Climate Change: Integrating Public Health into Climate Action Planning

February 2012

From the California Department of Public Health, this report primarily addresses key GHG emissions reduction efforts in Climate Action Plans (CAPs) that have public health co-benefits. This guidance can be useful for any public health agency, even outside of California, planning for climate impacts.

Related Organizations: California Department of Public Health

Resource Category: Planning

Average Rating



SEE RESOURCE

ADD TO MY RESOURCE LIST

Resource

CDC: Assessing Vulnerability to Climate Change - A Guide for Health Departments

July 16, 2014

This guidance document from the Center for Disease Control (CDC) Climate and Health Program Technical Report Series is designed to support health departments in assessing local vulnerabilities to health hazards associated with climate change.

Related Organizations: Centers for Disease Control (CDC)

Authors: Arie Ponce Manangan, Christopher K. Uejio, Shubhayu Saha, Paul J. Schramm, Gino D. Marinucci, Jeremy J. Hess, George Lubet

Resource Category: Assessments

Average Rating



SEE RESOURCE

ADD TO MY RESOURCE LIST

Resource

Minnesota Climate and Health Profile Report

February 2015

The Minnesota Department of Health (MDH) Climate and Health Profile Report 2015, "An Assessment of Climate Change Impacts on the Health & Well-Being of Minnesotans," provides a comprehensive assessment of climate change impacts and potential health implications for the state. In

Average Rating



- POPULAR RESOURCES
- PUBLIC HEALTH BASICS
- SCIENCE AND TOOLS
- PLANS**
- PLANNING GUIDES
- EDUCATION & COMMUNICATION
- ADAPTATION STRATEGIES
- LAWS & REGULATIONS
- FUNDING
- ORGANIZATIONS
- GEOGRAPHIC SEARCH

Public Health Resources (edit)
This tab includes resources that discuss adaptation options in the public health sector.
Resources can be sorted by date or title, but can be sorted by date or title. Apply additional filters to narrow the results by plan type or functional focus.

Within the other tabs explore by adaptation planning stage

71 results are shown below.

PLAN TYPE

PLANNING

PLANS (OTHER) PUBLIC HEALTH PLANNING

APPLY ADDITIONAL FILTERS ▾ SORT BY ▾

Resource

Cleveland, Ohio Climate Action Plan: Building Thriving and Healthy Neighborhoods

October 2013

Cleveland Mayor Frank G. Jackson's Office of Sustainability convened a 50-member Climate Action Advisory Committee with representatives of leading organizations from the commercial, industrial, educational, government, and non-profit sectors to inform and create Cleveland's Climate Action Plan (CAP). 33 actions are outlined in the plan, within 6 focus areas including: Energy Efficiency and Green Building; Advanced and Renewable Energy; Sustainable Mobility; Waste Reduction and Resource Conservation; Land Use and Clean Water; and Community Engagement and Public Health.

Related Organizations: City of Cleveland, Office of Sustainability

Resource Category: Planning

Average Rating ★★★★★

SEE RESOURCE ADD TO MY RESOURCE LIST

Resource

The Oregon Climate Change Adaptation Framework

December 2010

The result of a collaborative effort between Oregon's state agencies, and with support from the Oregon Climate Change Research Institute, this report provides a framework for the continued development of strategies and plans to address future climate conditions in the state.

Related Organizations: State of Oregon, Oregon Climate Change Research Institute (OCCRI)

Resource Category: Planning

Average Rating ★★★★★

SEE RESOURCE ADD TO MY RESOURCE LIST

POPULAR RESOURCES

PUBLIC HEALTH BASICS

SCIENCE AND TOOLS

PLANS

PLANNING GUIDES

EDUCATION &
COMMUNICATION

ADAPTATION
STRATEGIES

LAWS & REGULATIONS

FUNDING

ORGANIZATIONS

GEOGRAPHIC SEARCH

Public Health Sector Plans

(edit)

This tab includes federal, state, and local plans that discuss adaptation options in the public health sector.

Resources are automatically presented by rating, but can be sorted by date or title. Apply additional filters to narrow the list by plan type, impact, region, state, or jurisdictional focus.

2 results are shown below.

FILTER BY REGIONS IMPACTED

Filter by Regions Affected

- COASTAL STATES
- GREAT LAKES
- GREAT PLAINS
- GULF COAST
- MID-ATLANTIC
- MIDWEST
- NEW ENGLAND
- NORTHEAST
- PACIFIC NORTHWEST
- SOUTHEAST
- SOUTHWEST
- U.S. TERRITORIES

PLAN TYPE

- PLANNING
- ADAPTATION PLAN
- PLANS (OTHER)
- PUBLIC HEALTH PLANNING

APPLY ADDITIONAL FILTERS

SORT BY

Resource

Cook County, Illinois Climate Change and Public Health Action Plan

2012

The Cook County Climate Change and Public Health Action Plan is a strategic plan to help Cook County adapt to predicted public health impacts resulting from climate change. The plan identifies five areas of concern in Cook County: extreme heat and weather; food-borne illness; vector-borne illness; water quality and quantity and waterborne diseases; and air pollution and allergens - which are expected to be more prevalent as climate change continues and extreme weather events become more common. This report was sponsored by the Chicago Physicians for Social Responsibility.

Related Organizations: Chicago Physicians for Social Responsibility

Resource Category: Planning

SEE RESOURCE

ADD TO MY RESOURCE LIST

Resource

Michigan Climate and Health Adaptation Plan (MI-CHAP) 2010-2015 Strategic Plan

January 18, 2011

As a result of 2009 funding from ASHTO, in January 2011 the Michigan Department of Community Health (MDCH) released their first strategic adaptation plan to "prepare the Public Health System in Michigan to address the public health consequences of climate change in a coordinated manner."

Related Organizations: Michigan Department of Community Health

Authors: Lorraine Cameron, Martha Stanbury, Robert Wahl, Susan Manente

Resource Category: Planning

And
apply
filters to
narrow
the list

POPULAR RESOURCES

PUBLIC HEALTH BASICS

SCIENCE AND TOOLS

PLANS

PLANNING GUIDES

EDUCATION &
COMMUNICATION

ADAPTATION
STRATEGIES

LAWS & REGULATIONS

FUNDING

ORGANIZATIONS

GEOGRAPHIC SEARCH

All Public Health Resources by Region or State

(edit)

This tab includes all resources relevant to adaptation in the public health sectors. Apply filters to view resources for a particular region or state. Alternatively, use the map to explore public health resources.

Resources are automatically presented by date, but can also be sorted by rating and title.

314 results are shown below.

SEARCH BY KEYWORD

Enter a keyword

APPLY FILTER

APPLY ADDITIONAL FILTERS

SORT BY



Resource

States at Risk: America's Preparedness Report Card

January 20, 2016

America's Preparedness Report Card is a national analysis of state level preparedness for climate change weather-related risks for all 50 states. Climate Central and ICF International identified states with considerable and significantly increasing levels of five major climate threats, including extreme heat, drought, wildfires, inland and coastal flooding, with an emphasis on risks to vulnerable populations. They also assessed climate change preparedness actions that each of the states are taking for their current and future projected impacts. The assessment covered five major sectors of society and the economy through 2050, including: transportation, energy, health, water, and communities. Ultimately, the Report Card assigns grades to each state based on what it has already done, as compared to its threat levels and to other states.

Related Organizations: ICF International, Climate Central

Resource Category: Assessments

The final tab will allow you to see all resources related to the sector

POPULAR RESOURCES

Adaptive Transportation Projects and Design Guidelines (edit)

These resources provide examples of physical adaptation projects in the transportation sector as well as other examples related to project design, such as design guidelines that incorporate climate change projections. Many of the examples in this list are provided by case studies developed through a cooperative agreement with the Federal Highway Administration.

Resources are automatically presented by rating, but can be sorted by date or title. Apply additional filters to narrow the results by region, state, climate impacts, jurisdictional focus, or transportation lifecycle stage.

Some sectors have sector specific tabs

PLANNING GUIDES

POLICY

CASE STUDIES

PROJECT DESIGN

OPERATIONS & MAINTENANCE

ORGANIZATIONS

GEOGRAPHIC SEARCH

53 results are shown below.

DESIGN OR DECISION-MAKING STAGE

Narrow the resources by stage of the transportation decision-making cycle that are related to project design.

- COST-BENEFIT ANALYSIS
- DESIGN STANDARDS AND REQUIREMENTS
- NEPA/ENVIRONMENTAL REVIEW
- PROJECT-LEVEL DESIGN AND CONSTRUCTION

SEARCH BY KEYWORD

Enter a keyword

APPLY FILTER

APPLY ADDITIONAL FILTERS

SORT BY

And filters

Resource

Rebuild of Highway A1A in Fort Lauderdale

December 2015

After Hurricane Sandy washed out a segment of the state highway, the Florida Department of Transportation ("FDOT") and the City of Fort Lauderdale rebuilt a portion of the A1A highway ("A1A") to be more resilient to future impacts. The redesigned highway segments includes several different features that will increase the highway's resilience to future flooding and erosion and will also make the city more walkable and bikeable:

Related Organizations: Florida Department of Transportation, City of Fort Lauderdale, Florida

Resource Category: Solutions

SEE RESOURCE

ADD TO MY RESOURCE LIST

Average Rating



Resource

Port Authority of New York and New Jersey Engineering Department Manual - Climate Resilience Design Guidelines

Average Rating





TURN OFF EMAIL NOTIFICATIONS

Water

This page includes resources to help policymakers understand, plan, and prepare for impacts of climate change to the water sector including plans, policies, and tools.

If you are interested in adaptation efforts in the water sector (including efforts to adapt to changes in water supply, water quality, and impacts to water infrastructure), please sign up for email updates to receive monthly notifications about all the latest water resources.

The water sector page is powered by the [EPA's Climate Ready Water Utilities Toolbox](#) and other water resources found in the Adaptation Clearinghouse. The CRWU Toolbox was integrated into the Adaptation Clearinghouse in November 2015.

SHOW LESS



Welcome Melissa Deas

Institute Associate

[Edit Profile](#) | [Logout](#)

Job Information is incomplete. Complete your profile

M

V

E

We also worked with our fantastic partners to help develop content

Water Resources

POPULAR RESOURCES

WATER BASICS

SCIENCE & TOOLS

PLANS

PLANNING GUIDES

EDUCATION & COMMUNICATION

LAW & POLICY

Climate Ready Water Utilities

(edit)

Climate Ready Water Utilities (CRWU) is an initiative of the Environmental Protection Agency (EPA) to provide water sector utilities (drinking water, wastewater, and stormwater utilities) with the practical tools, training, and technical assistance needed to adapt to climate change. The resources below are part of the CRWU initiative.

15 results are shown below.

SEARCH BY KEYWORD

Enter a keyword

APPLY FILTER

SORT BY ▾

POPULAR RESOURCES

Climate Ready Water Utilities (edit)

Climate Ready Water Utilities (CRWU) is an initiative of the Environmental Protection Agency (EPA) to provide water sector (drinking water, wastewater, and stormwater utilities) with the practical tools, training, and technical assistance needed to adapt to climate change. The resources below are part of the CRWU initiative.

15 results are shown below.

KEYWORD

word

APPLY FILTER

SORT BY

Resource

Adaptation Case Study and Information Exchange

Developed under the U.S. Environmental Protection Agency (EPA) Climate Ready Water Utilities (CRWU) initiative, the Adaptation Case Study and Information Exchange is a website featuring climate change adaptation strategies that water sector utilities are deploying across the country. The website has an interactive map linking to case studies produced by the EPA. Each point on the map represents a drinking water, wastewater, or combined utility that provides the climate threats facing the utility, as well as the corresponding adaptation measures that the utility considered for implementation.

Related Organizations: U.S. Environmental Protection Agency (EPA)

Resource Category: Solutions

SEE RESOURCE

ADD TO MY RESOURCE LIST

Resource

Sustainable Water Infrastructure Website

May 2016

The Sustainable Water Infrastructure Website, created by the U.S. Environmental Protection Agency, consists of a collection of resources relating to sustainable water infrastructure (SWI). The website aims to educate users on the variety of components that make up sustainable water infrastructure, and to provide data and tools to help state and local officials implement SWI.

Related Organizations: U.S. Environmental Protection Agency (EPA)

Resource Category: Planning

SEE RESOURCE

ADD TO MY RESOURCE LIST

Resource

Climate Resilience Evaluation and Assessment Tool (CREAT) 2016

And even migrated federal databases into AC2.0



CLIMATE READY WATER UTILITIES

CLIMATE READY ESTUARIES

DROUGHT

GREEN INFRASTRUCTURE

ORGANIZATIONS

GEOGRAPHIC SEARCH

Learn more about CRWU



LEARN MORE

(EDIT)



Adaptation Equity Portal

GEORGETOWN CLIMATE CENTER
A Leading Resource for State and Federal Policy



LEAVE NETWORK

Adaptation Clearinghouse Portal

THIS PORTAL WAS LAUNCHED IN MARCH 2017. TO LEARN MORE ABOUT OUR WEBSITE USING THIS LINK

Create an account or log-in to join the network

Two of the biggest challenges facing the United States and the world - climate change and the world - are that unfavourably disadvantage low-income and communities of color. Climate change, through rising temperatures, more frequent and intense extreme weather events, and already poor air quality, will disproportionately affect communities. Policymakers must find ways to address the physical impacts of climate change, but also on the ways that policies can have a differential impact on certain individuals and communities. In this portal we will refer to people facing disproportionate climate impacts as "frontline communities" since these are groups that are on the frontlines of impacts from climate change.

READ MORE



Welcome Melissa Deas

Institute Associate at Georgetown Climate Center
[Edit Profile](#) | [Logout](#)

MANAGE EMAIL SUBSCRIPTIONS

VISIT MY CLEARINGHOUSE

SUBMIT A RESOURCE

Equitable Adaptation Resources

Resources

Members

EQUITY 101

POPULAR RESOURCES

TOOLS & ASSESSMENTS

PLANS

ENGAGEMENT

FUNDING PROGRAMS

LAWS & STRATEGIES

PROGRESS REPORTING

CONSIDERING POVERTY

CONSIDERING RACE

ORGANIZATIONS

ALL ADAPTATION EQUITY RESOURCES

An Introduction to Adaptation and Equity

Climate change is often described as a threat multiplier - and this applies to social inequities. For example, people already struggling to find affordable housing will face more difficulty if extreme weather damages a significant number of units. Explore the resources below to better understand how climate change will have disproportionate impacts on people of color, low-income individuals, and other groups on the "frontlines" of climate change. Also, learn some of the strategies being used to address disproportionate risks.

Resource

Everybody's Movement - Environmental Justice and Climate Change

December 2009

Everybody's Movement: Environmental Justice and Climate Change describes how mitigating and adapting to climate change must be everybody's movement, in order to be successful. This report aims to provide answers to the question: "What will it take to create a climate change movement that engages everyone?" In doing so, the Environmental Support Center intends to contribute to creating a more participatory, inclusive climate change movement in the U.S. with the full engagement of poor communities and communities of color.

Related Organizations: Environmental Support Center

Author: Angela Park

Resource Category: Solutions

Network Rating



SEE RESOURCE

ADD TO MY RESOURCE LIST



An Introduction to Adaptation and Equity

Climate change is often described as a threat multiplier - and this applies to social inequities. For example, people already struggling to find affordable housing will face more difficulty if extreme weather damages a significant number of units. Explore the resources below to better understand how climate change will have disproportionate impacts on people of color, low-income communities, and other groups on the "frontlines" of climate change. Also, learn some of the strategies being used to address these disproportionate risks.

Resource

Everybody's Movement - Environmental Justice and Climate Change

December 2009

Everybody's Movement - Environmental Justice and Climate Change describes how mitigating and adapting to climate change must be everybody's responsibility in order to be successful. This report aims to provide answers to the question: "What will it take to create a climate change movement that engages everyone?" In doing so, the Environmental Support Center intends to contribute to a more participatory, inclusive climate change movement in the U.S. with the full engagement of poor communities and communities of color.

Related Organizations: Environmental Support Center

Author: Angela Park

Resource Category: Solutions

SEE RESOURCE

ADD TO MY RESOURCE LIST

Network Rating
★★★★★

Resource

NAACP Equity in Building Resilience in Adaptation Planning

January 26, 2015

From the National Association for the Advancement of Colored People (NAACP), this report contains a list of equity based indicators that are measures of vulnerability and resilience to climate change impacts. The indicators were developed for both pre-existing vulnerabilities and assets, as well as for processes and results of resiliency planning. The aim of this resource is for city planners, community organizations, elected officials, and other decision-makers to consider these equity based indicators as they design climate adaptation plans.

Related Organizations: National Association for the Advancement of Colored People (NAACP)

Resource Category: Planning

Network Rating
★★★★☆

EQUITY 101

POPULAR RESOURCES

TOOLS & ASSESSMENTS

PLANS

ENGAGEMENT

FUNDING PROGRAMS

LAWS & STRATEGIES

PROGRESS REPORTING

CONSIDERING POVERTY

CONSIDERING RACE

ORGANIZATIONS

ALL ADAPTATION
EQUITY RESOURCES

Highly Rated Resources

This tab features resources that are rated highly by other members of the adaptation equity portal. Members like you may influence this list by rating resources. Just click on a resource and assign it a 1 (low) to 5 (high) star rating. The highest ratings (4 and 5 stars) are resources that other members have found useful in your own work.

APPLY ADDITIONAL FILTERS

SORT BY

Resource

Equity in Sustainability Program

2016

In September 2015, the Government Alliance for Race and Social Justice, in partnership with the Government Alliance for Race and Social Justice, launched a professional development program for their staff for advancing racial equity into sustainability planning. The program is available online and includes a holistic curriculum of five webinars, videos and projects. A facilitator's guide and worksheets using the related videos and

Related Organizations: (GASJ)**Resource Category:** Education and Outreach

SEE RESOURCE

ADD TO MY RESOURCE LIST

Network Rating



See ratings by other members of the Adaptation Equity Portal.

Resource

Everybody's Movement - Environmental Justice and Climate Change

December 2009

Everybody's Movement: Environmental Justice and Climate Change describes how mitigating and adapting to climate change must be everybody's movement, in order to be successful. This report aims to provide answers to the question: "What will it take to create a climate change movement that engages everyone?" In doing so, the Environmental Support Center intends to contribute to creating a more participatory, inclusive climate change movement in the U.S. with the full engagement of poor communities and communities of color.

Related Organizations: Environmental Support Center**Author:** Angela Park**Resource Category:** Solutions

SEE RESOURCE

ADD TO MY RESOURCE LIST

Network Rating



Resource

Climate Ready Boston Final Report (2016)

December 8, 2016

Climate Ready Boston is an initiative to enhance near- and long-term climate change preparedness and resiliency in Boston, Massachusetts. The comprehensive 400 page final report from the initiative uses updated climate projections to predict how climate change will impact Boston, and details the findings on vulnerable populations, buildings, infrastructure, the shoreline, and the economy. The report also provides an extensive analysis of climate resilience initiatives and a roadmap for strategic implementation. Climate Ready Boston is led by the City in partnership with the Green Ribbon Commission and with support from the Massachusetts Office of Coastal Zone Management and community partners.

Network Rating





TOOLS

+ SAVE

↗ SHARE

🖨️ PRINT

PG&E Better Together Resilient Communities Grant Program

Pacific Gas and Electric Company (PG&E) PG&E is offering a Resilient Communities grant program to help California communities withstand, and recover from extreme weather events and climate change. PG&E will invest \$1 million over five years – over 100 funded grants. PG&E will award two individual grants for community preparedness and resiliency, and the first round of applications is now open for 2017.

For 2017, PG&E will be funding projects that aim to build resilience in watersheds to help communities prevent and prepare for increasing wildfire risk. Eligible projects include research, planning or demonstration projects that build resilience at the community level to more frequent and extreme wildfires. Successful and replicable adaptive strategies and solutions resulting from the grant program will be made publicly available in order to help all communities, and to encourage local and regional partnerships.

To be eligible, applicants must be a governmental organization, educational institution or 501(c)3 nonprofit organization. All applicants must include a local government within PG&E's service area (northern and central California) as a partner.

Grant proposals will be assessed according to the following criteria:

Partnerships: the extent to which the proposal reflects a collaborative effort among multiple organizations

Replicability: the extent to which the proposal identifies how others can learn from and adopt the resulting strategies and solutions

Assistance to disadvantaged communities: the extent to which the proposal addresses the identified needs of frontline communities

Measurable impact: the extent to which the proposal includes practical, measurable and innovative ways to address community needs and climate risks

Publication Date: March 1, 2017

Related Organizations:

- Pacific Gas and Electric Company (PG&E)

Sectors:

📄 GO TO RESOURCE

Average Rating



Your Rating



RATE THIS RESOURCE

Rate resources to help your peers

Clearinghouse Members

SUBMIT A RESOURCE

- Land management and conservation
- Vulnerable populations
- Water resources

Resource Category:

- Funding

Resource Types:

- Funding program

States Affected:

- California

Impacts:

- Drought
- Socioeconomic
- Water supply
- Wildfires

 [GO TO RESOURCE](#)

User Comments:



March 17, 2017

Kimberly Hill Knott, Consultant

It is great to see companies invest in the communities they reside in. This grant is so unique because although utility companies may provide grants for a variety of issue areas, rarely are they specifically targeted towards environmental causes. This grant is also significant because often times utility companies cause environmental degradation to the community (people and plant) and readily fight any form of strong regulations. I would like to see other utility companies follow this same model. I certainly plan to take this concept to my local utility company-DTE Energy. Also, it would be great if PG&E would be willing to advise other utility companies on how to establish this type of grant program. However, utility companies MUST know that providing funding to the community is by NO MEANS a licence or pass to keep polluting, in fact readily embracing the triple-bottom-line is something that ALL companies should be doing. Great job PG&E!!

Leave comments like this one to help other users!

EQUITY 101

POPULAR RESOURCES

TOOLS & ASSESSMENTS

PLANS

ENGAGEMENT

FUNDING PROGRAMS

LAWS & STRATEGIES

PROGRESS REPORTING

CONSIDERING POVERTY

CONSIDERING RACE

ORGANIZATIONS

ALL ADAPTATION
EQUITY RESOURCES

Explore the great work
our partners are doing!
WE ACT



Plans

This tab features plans that have a component focused on equity. Plans include adaptation plans, public health plans, green infrastructure plans, stormwater management plans, and hazard mitigation plans, among others.

Resources are automatically presented by date, but you may also sort by network rating or title. Apply additional filters to narrow the list by organization type of author, state, jurisdictional focus, region, or plan type.

10 results are shown below.

PLAN TYPE

- ADAPTATION PLANNING
- CLIMATE ACTION PLANNING
- COASTAL MANAGEMENT PLANNING
- EMERGENCY RESPONSE PLANNING
- LAND-USE PLANNING (COMP PLAN/MASTER PLAN)
- PUBLIC HEALTH PLANNING
- URBAN FORESTRY PLANNING

APPLY ADDITIONAL FILTERS

Filter by...

- + JURISDICTIONAL FOCUS
- + ORGANIZATION TYPE
- + REGION AFFECTED
- + STATES AFFECTED
- + SEARCH BY KEYWORD

Pittsburgh Resilience Strategy

Network Rating



Pittsburgh released its Resilience Strategy in March 2017 to help the city manage challenges from a changing climate and sea level rise. The Strategy sets goals, objectives, and action organized around a "P4" framework addressing resilience in terms of People, Place, Planet, and Performance. The Strategy will help the city prepare for resilience challenges by helping the city improve coordination among government and non-governmental organizations, improve budgeting and capital coordination citywide, ensure the implementation of resilience practices, and increase resident engagement and empowerment. Development of this plan was supported by the Rockefeller Foundation's 100 Resilient Cities initiative.

Related Organizations: City of Pittsburgh, Pennsylvania

Resource Category: Planning

[SEE RESOURCE](#)
[ADD TO MY RESOURCE LIST](#)

Resource

2016 U.S. Department of Energy Environmental Justice Strategy

January 2017

This strategy document is the culmination of a process that began in November 2007 to review and update the Department of Energy (DOE) *1995 Environmental Justice Strategy*. The strategy describes DOE's plan for complying with *Executive Order 12898, Federal Actions to Address Environmental Justice in Minority Populations and Low-Income Population* (Clinton, 1994). The strategy outlines its objectives to integrate environmental justice into National Environmental Policy Act (NEPA) implementation, minimize climate change impacts on vulnerable people, and comply with Title VI of the *Civil Rights Act of 1964*.

Related Organizations: U.S. Department of Energy (DOE)

Resource Category: Planning

[SEE RESOURCE](#)
[ADD TO MY RESOURCE LIST](#)

TOOLS

+ SAVE

↻ SHARE

🖨️ PRINT

One New York: The Plan for a Strong and Just City (OneNYC)

The 2015 plan for New York City, *One New York: The Plan for a Strong and Just City* (OneNYC) was originally released in 2007, and again in 2011 under the name "PlaNYC." As in past iterations of this report, OneNYC addresses New York City's economic growth, sustainability, and efficiency—but also seeks to address issues of equity, and provides a goal. OneNYC lays out strategies for dealing with climate change impacts, while ensuring the quality of economic growth and vitality.

For any resource not exclusively about equity, read our "spotlights" to learn how that resource integrated equity considerations

New York City will be the most sustainable big city in the world and a leader in the fight against climate change." The vision involves minimizing New York City's environmental footprint, reducing greenhouse gas emissions, and having the cleanest air quality of any city in the U.S.

Spotlight on Equity

One of the primary visions of OneNYC is to build a more just and equitable city, characterized by an inclusive economy that offers well-paying jobs and opportunities. New York reports that income inequality in the city surpasses the national average and that 45% of New Yorkers are in or near poverty.

The equity chapter of the plan identifies the following 7 goals:

- Promote access to high-quality, conveniently-located, community-based city resources that promote civic engagement and enable New Yorkers to thrive
- Provide healthy neighborhoods and encourage active living
- Ensure all New Yorkers have access to the physical and mental healthcare services they need
- Be the safest large U.S. city with the lowest rate of incarceration, with a criminal justice system that leads the nation in fairness and efficiency
- Embrace Vision Zero and accept no traffic fatalities on New York City streets

In addition to the chapter on equity, the sustainability and resilience chapters also integrate the City's equity vision. On Page 164, the plan describes their environmental justice goals. Specific to climate adaptation, the plan describes efforts to reduce flooding in


[GO TO RESOURCE](#)

Average Rating



Your Rating


[RATE THIS RESOURCE](#)

Clearinghouse Members

[SUBMIT A RESOURCE](#)

Spotlight on Equity

One of the primary visions of OneNYC is to build a more just and equitable city, characterized by an inclusive economy that offers well-paying jobs and opportunities. New York reports that income inequality in the city surpasses the national average and that 45% of New Yorkers are in or near poverty.

- Promote access to high-quality, conveniently-located, community-based city resources that promote civic engagement and enable New Yorkers to thrive
- Provide healthy neighborhoods and encourage active living
- Ensure all New Yorkers have access to the physical and mental healthcare services they need
- Be the safest large U.S. city with the lowest rate of incarceration, with a criminal justice system that leads the nation in fairness and efficiency
- Embrace Vision Zero and accept no traffic fatalities on New York City streets

In addition to the chapter on equity, the sustainability and resilience chapters also integrate the City's equity vision. On Page 164,

Where progress reports are available or other related resources might be helpful, we include this “learn more” icon.

Learn More

In 2016 the NYC Environmental Justice Alliance (NYC-EJA) published an analysis of the OneNYC Plan that recommends ways to strengthen the city government's efforts to cultivate climate justice. See that report [here](#).

In the vision of the OneNYC Plan, “all neighborhoods, people, and services are ready to withstand and emerge stronger from the impacts of climate change and other 21st century threats.”

To become a resilient city, this plan indicates that New York City will:

- Eliminate disaster-related long-term displacement more than one year of New Yorkers from homes by 2050;
- Reduce the Social Vulnerability Index for neighborhoods across the city; and
- Reduce average annual economic losses resulting from climate-related events.

The first of the risks addressed in the Resiliency chapter is climate change, including rising sea levels, increased temperatures and precipitation, and a growing likelihood of more intense storms. In 2015, the New York City Panel on Climate Change (NPCC) released an updated set of climate projections for the region. Among its findings, the report noted that sea level rise for New York City, which had averaged 1.2 inches per decade (a total of 1.1 feet since 1900), is nearly twice the observed global rate over a similar time period.

Your Rating



[RATE THIS RESOURCE](#)

Clearinghouse Members

[SUBMIT A RESOURCE](#)



TOOLS

+ SAVE

SHARE

PRINT

NYC Climate Justice Agenda

In this report, the NYC Environmental Justice Alliance (NYC-EJA) presents an analysis of Mayor Bill de Blasio's *OneNYC Plan* and recommends ways to strengthen the city government's efforts to cultivate climate justice. The document is organized under five themes: (1) climate adaptation and mitigation, (2) equity and infrastructure, (3) public health, (4) community preparedness, and (5) community-based planning. Under each theme, NYC-EJA lists the strengths and shortcomings of *OneNYC* as well as a list of recommendations to build a more just, equitable, and resilient city.

For example, the report describes the unique vulnerabilities of color living in or around designated areas (SMIAs). Significant disparities are due to a low income, more likely to be home to a disproportionately burdened community of color. The climate adaptation and mitigation section points out that SMIAs have not been properly prioritized for resiliency investments despite their high exposure to storm surge. NYC-EJA recommends that the city monitor and reduce hazardous exposures, invest more equitably in coastal protection, prioritize green infrastructure improvements, and assess the impacts of high winds in these communities.

NYC-EJA also highlights the locally-led, grassroots initiatives of its member organizations in order to identify models of leadership and opportunities for partnership. One such organization is UPROSE, Brooklyn's oldest Latino community-based organization, which promotes sustainability and resiliency in the Sunset Park neighborhood through community organizing, education, indigenous and youth leadership development, and cultural/artistic expression.

In addition to *OneNYC*, this document assesses New York City's, "*A Stronger, More Resilient New York*" (2013), other climate initiatives, and the state of interagency planning and coordination. This report serves as a policy framework to analyze city resiliency plans and reduce the vulnerabilities of low-income communities and communities of color to climate change impacts.

Publication Date: April 2016

Potential Use

Use the recommendations of environmental justice leaders to assess if your own community's policies are meeting their standards.

For tools and strategy resources, find a one-sentence summary of how you might use that resource.



New York City Environmental Justice Alliance
NYC Climate Justice Agenda

Strengthening the Mayor's OneNYC Plan

APRIL 2016

GO TO RESOURCE

Your Rating



RATE THIS RESOURCE

Clearinghouse Members

SUBMIT A RESOURCE

EQUITY 101

POPULAR RESOURCES

TOOLS & ASSESSMENTS

PLANS

ENGAGEMENT

FUNDING PROGRAMS

LAWS & STRATEGIES

PROGRESS REPORTING

CONSIDERING EQUITY

CONSIDERING RACE

ORGANIZATIONS

ALL ADAPTATION

EQUITY RESOURCES

Explore the great work our partners are doing!
WE ACT



Explore the great work our partners are doing!
Gulf Coast Center for Law & Policy



Organizations Working on Equity

Organizations that work on adaptation and social justice are listed below.

Organizations are automatically presented by title. Apply additional filters to narrow this list by state, region, or organization type.

47 results are shown below.

SEARCH BY KEYWORD

Enter a keyword

APPLY FILTER

APPLY ADDI

Organization

Find organizations working on equity and see what resources they have produced.

journalism. It was designed to provide a voice for
ject uses innovative social networking and crowd
red approach is supplemented by face-to-face
ther news media partners. The project seeks to
C though a wide range of existing tools and
ther original interactive and multimedia
an innovative approach to involve citizens in the
hen relationships among communities, city

Organization

AmeriCorps - Corporation for National and Community Service

Founded in 1994, AmeriCorps engages more than 80,000 Americans in intensive service each year at 21,600 unique sites including nonprofits, schools, public agencies, and community and faith-based groups across the country. The Corporation for National and Community Service, the federal agency that hosts the AmeriCorps program, works to help millions of Americans improve the lives of their fellow citizens through service.

Organization

Asian Pacific Environmental Network

The Asian Pacific Environmental Network(APEN) holds the vision that all people have a right to a clean and healthy environment in which their communities can live, work, learn, play and thrive. APEN was founded in 1993 and seeks to bring together a collective voice among the diverse Asian Pacific Islander communities in the US. Through a strategy which combines grassroots community organizing, civic engagement, and policy, APEN works to develop an alternative agenda for environmental, social, and economic justice.

Organization

California Environmental Justice Alliance

California Environmental Justice Alliance (CEJA) is a statewide coalition of grassroots, environmental justice organizations. CEJA seeks to shift the paradigm to prioritize environmental justice communities in California's climate policy. To do so, CEJA works to put equity at the center of the climate debate, put the most vulnerable communities in leadership roles, and reorient policy to reduce toxic hotspots, implement strong regulatory measures, and speed the transition away from fossil fuels. In addition to its campaign for climate justice, CEJA's Energy Equity campaign promotes local, democratic, and

- EQUITY 101
- POPULAR RESOURCES
- TOOLS & ASSESSMENTS
- PLANS
- ENGAGEMENT
- FUNDING PROGRAMS
- CONSIDERING RACE
- ORGANIZATIONS
- ALL ADAPTATION EQUITY RESOURCES**

All Adaptation Resources

This tab includes resources for a particular region or disproportionate resources for a particular region. Resources are automatically presented by date, but can be sorted by network rating and title.

Filter by frontline community.

Search all resources in the portal

FRONTLINE COMMUNITIES

AT-RISK OF DISPLACEMENT SENIOR CITIZENS NON-NATIVE ENGLISH SPEAKERS HOMELESS

LOW-INCOME PEOPLE OF COLOR OUTDOOR WORKERS/CLIMATE VULNERABLE LABOR

INCARCERATED POPULATIONS RENTERS/SUBSIDIZED HOUSING TENANT

CHRONICALLY-ILL/HOSPITALIZED SINGLE-PARENT HOUSEHOLDS PERSON WITH DISABILITY

SMALL BUSINESS OWNERS IMMIGRANTS UNEMPLOYED/UNDEREMPLOYED YOUTH

APPLY ADDITIONAL FILTERS ▾ SORT BY ▾

Resource

EPA Climate and Health Assessment Kits

December 2016

The U.S. Environmental Protection Agency (EPA) has developed climate communication materials that summarize key points from the USGCRP [U.S. Climate and Health Assessment](#) for the different populations that are disproportionately affected by climate-change impacts. The assessment provides a comprehensive analysis of observed and projected health impacts from climate change, and specifies the impacts on a range of vulnerable populations. The eight assessment kits distill this information and focus on the climate impact attributes respective to each population of concern, while offering educational materials and communication strategies. The populations targeted are:

Resource Category: Education and Outreach

SEE RESOURCE

ADD TO MY RESOURCE LIST

Resource

NRDC Ocean Acidification Hotspots Map

September 2015

The Natural Resources Defense Council (NRDC) has developed an online interactive map of ocean acidification implications on coastal communities. The mapping approach determines where the ocean chemistry is changing most rapidly, where vulnerable species are located, and where people who most depend on these species reside. The intersection of these factors reveals an elevated risk from ocean acidification.

Related Organizations: [Natural Resources Defense Council \(NRDC\)](#)

Resource Category: Data and tools

SEE RESOURCE

ADD TO MY RESOURCE LIST



LEAVE NETWORK

Adaptation Equity Portal

THIS...
201...
USI...
...RCH 30,
...R WEBINAR

Two... ed States -
and... that unfairly
disa... on, and
clim... cle...
com... ing
tem...
inte...
alre...
mus... ical impacts of
clim... cies can have
a di...
com...
dis...
con...
...e
...re on the
frontlines of impacts from climate change.

READ MORE

Let us know if we are missing something.



Welcome Melissa Deas

Institute Associate at Georgetown
Climate Center
[Edit Profile](#) | [Logout](#)

MANAGE EMAIL SUBSCRIPTIONS

VISIT MY CLEARINGHOUSE

SUBMIT A RESOURCE

Equitable Adaptation Resources

Resources

Members

EQUITY 101

POPULAR RESOURCES

TOOLS & ASSESSMENTS

PLANS

ENGAGEMENT

FUNDING PROGRAMS

LAWS & STRATEGIES

PROGRESS REPORTING

CONSIDERING POVERTY

CONSIDERING RACE

ORGANIZATIONS

ALL ADAPTATION
EQUITY RESOURCES

An Introduction to Adaptation and Equity

Climate change is often described as a threat multiplier - and this applies to social inequities. For example, people already struggling to find affordable housing will face more difficulty if extreme weather damages a significant number of units. Explore the resources below to better understand how climate change will have disproportionate impacts on people of color, low-income individuals, and other groups on the "frontlines" of climate change. Also, learn some of the strategies being used to address disproportionate risks.

Resource

Everybody's Movement - Environmental Justice and Climate Change

December 2009

Everybody's Movement: Environmental Justice and Climate Change describes how mitigating and adapting to climate change must be everybody's movement, in order to be successful. This report aims to provide answers to the question: "What will it take to create a climate change movement that engages everyone?" In doing so, the Environmental Support Center intends to contribute to creating a more participatory, inclusive climate change movement in the U.S. with the full engagement of poor communities and communities of color.

Related Organizations: Environmental Support Center

Author: Angela Park

Resource Category: Solutions

Network Rating



SEE RESOURCE

ADD TO MY RESOURCE LIST

Thank you and please visit
AdaptationClearinghouse.org
to explore on your own!

Melissa Deas at deas@law.georgetown.edu with any questions