

# Metro's Capital Program and TPB

TPB Access for All Advisory Committee  
September 18, 2023



# Strategic Transformation Plan Shapes Our Capital Program

## Your Metro, The Way Forward

**Metro's Mission:** Your Metro – Connecting you to possibilities

**Metro's Vision:** The region's trusted way to move more people safely and sustainably

Metro's vision will be achieved by advancing four goals that were developed through data and direct input from our customers, staff, and stakeholders:

**Your Metro,  
The Way Forward**  
Strategic Transformation Plan

**Service excellence**

Deliver safe, reliable, convenient, equitable, accessible, and enjoyable service for customers.

**Talented teams**

Attract, develop, and retain top talent where individuals feel valued, supported, and proud of their contribution.

**Regional opportunity and partnership**

Design transit service to move more people and equitably connect a growing region.

**Sustainability**

Manage resources responsibly to achieve a sustainable operating, capital, and environmental model.



# Metro's Capital Program Exists at Three Levels

10-Year Capital Plan

6-Year Capital Improvement Program (CIP)

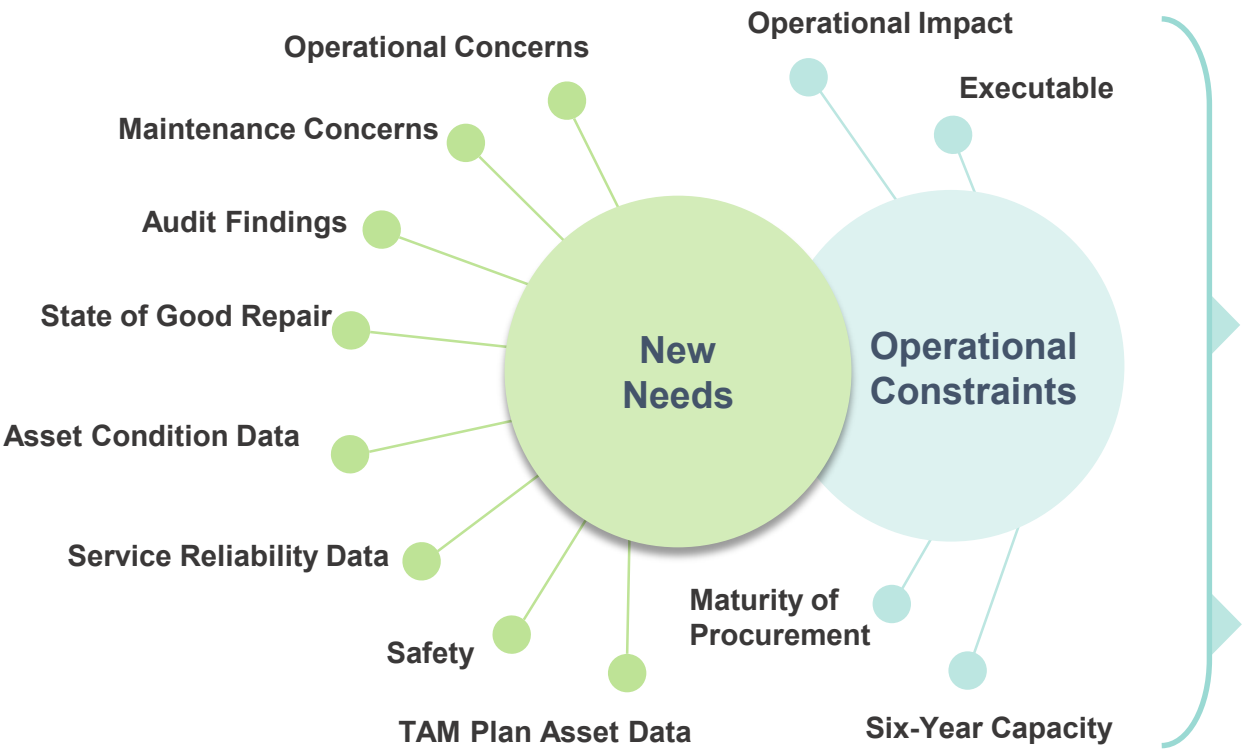
Annual Budget

# Metro's Capital Planning Process



*Data inputs generate new needs that are evaluated against operational constraints of the organization. New starts are then programmed into the Six-Year Program and 10-Year Plan based on this evaluation.*

*Combination of Projects, Programs and New Starts to maximize agency priorities while constraining for executability in the Six-Year. However, the 10-Year Capital Plan is unconstrained*



## Six-Year Capital Improvement Program



## 10-Year Capital Plan *Unconstrained*




# Different Types of Projects Take Different Paths to Approval

## State of Good Repair Projects



## Capacity, New Needs, and Some Modernization Projects

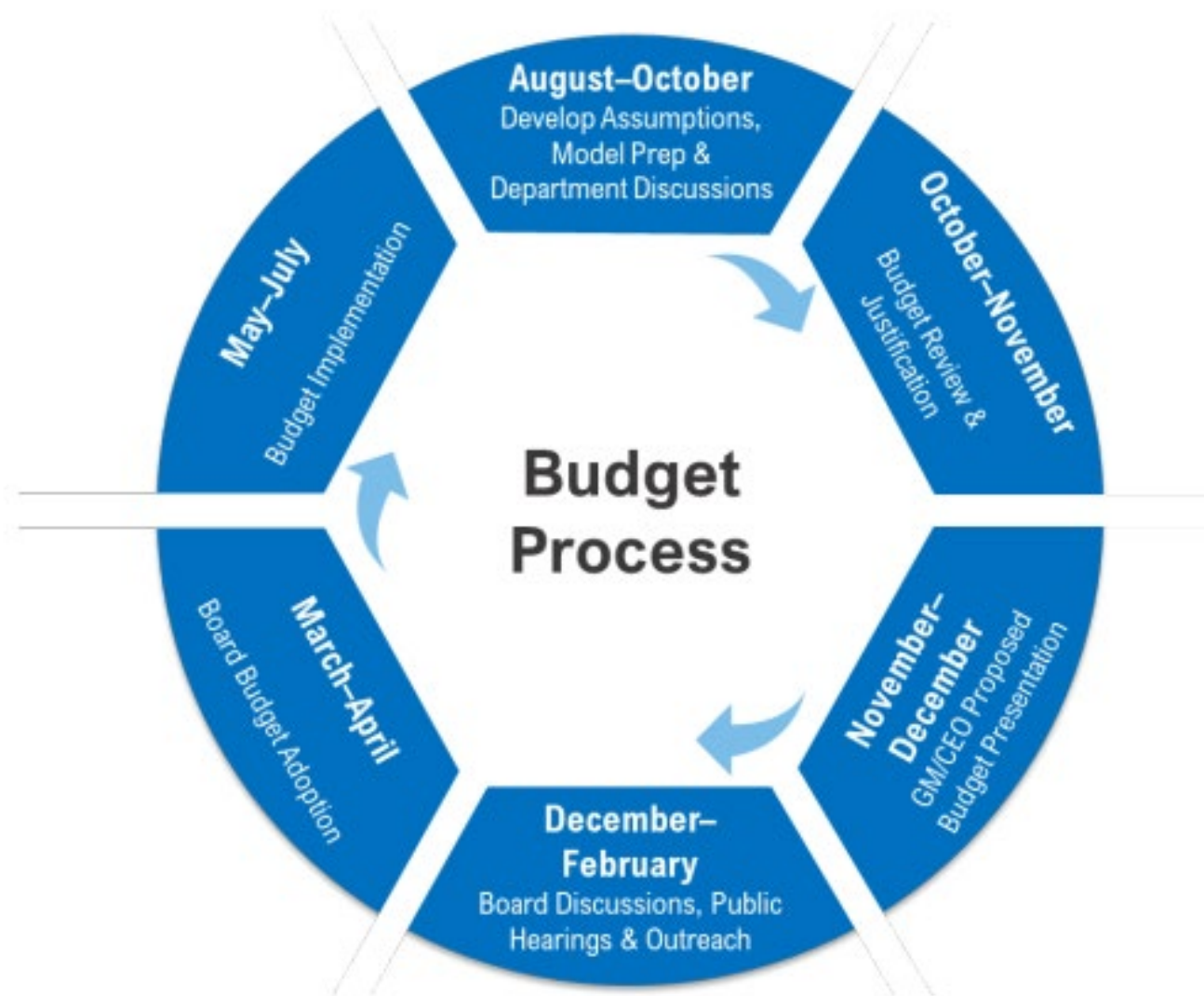


 = community / public engagement opportunities



# Metro's Annual Budget Process

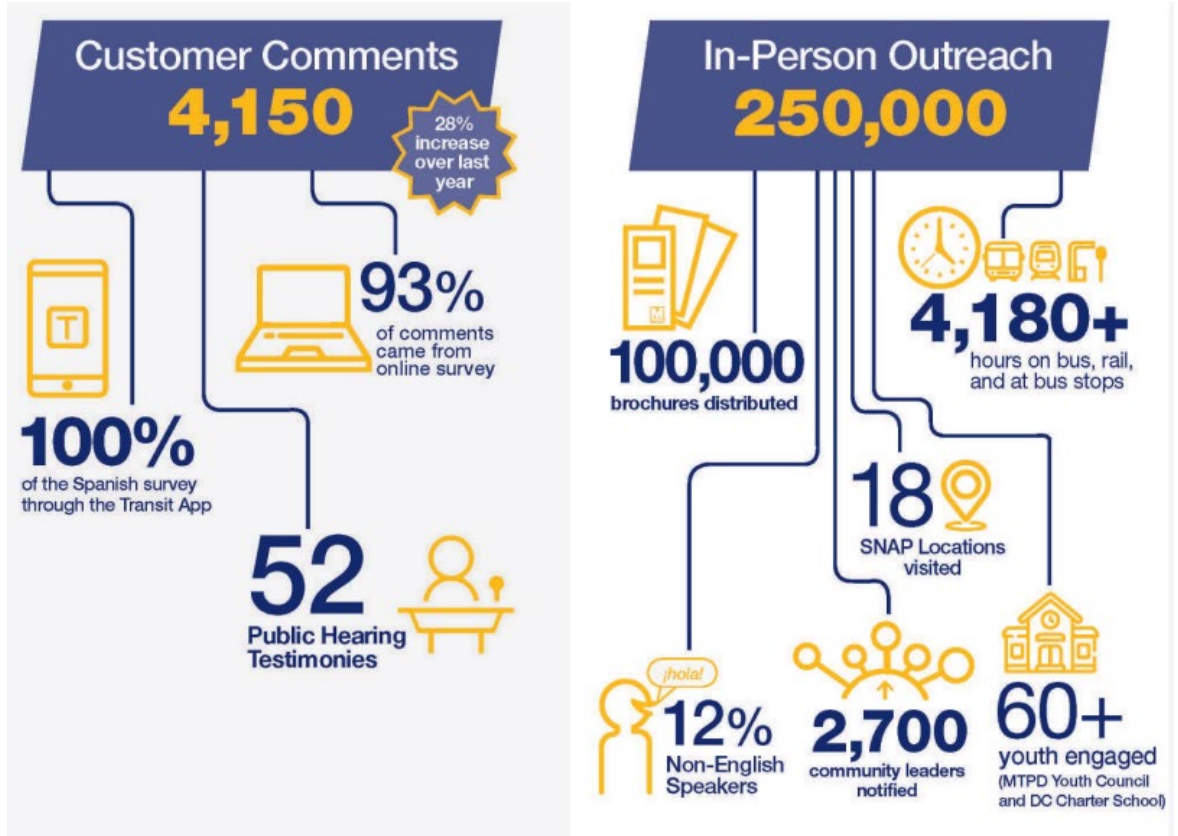
- 3 components:
  - Update 6-year CIP
  - Annual capital budget
  - Annual operating budget
- FY 2024 budget process approved:
  - FY 2024-2029 CIP
  - FY 2024 capital budget
  - FY 2024 operating budget



# Metro's CIP and Budget Are Shaped by Public Input

- 4 Compact public hearings
  - March 6 in DC (Metro HQ)
  - March 7 in MD
  - March 8 in VA
  - March 10 virtual
- Outreach at stations and bus stops
  - Rail stations, transit centers, major bus stops
  - Multilingual teams
  - 254,000 customer interactions, 100,000+ brochures
- Website
- Online survey (English and Spanish)
- Social media and advertising
- 4,150+ comments received

## FY 2024 Budget Outreach



# Metro FY 2024-2033 Capital Plan, CIP, and FY24 Budget

- 73% of investments in 10-year plan address SGR
- 10-year Capital Plan = \$27 billion
- 6-year CIP = \$14.4 billion
- FY24 capital budget = \$2.4 billion

Capital Investment Categories <i>(\$ in M)</i>	FY2024 Recommended Budget	FY2025 – FY2029 Plan	Six-Year Total*
Railcars and Railcar Facilities	\$423.9	\$2,390.5	\$2,814.4
Rail Systems	322.8	1,273.2	1,596.0
Track and Structure Rehabilitation	284.2	1,511.6	1,795.8
Stations and Passenger Facilities	353.0	1,522.9	1,875.9
Bus, Bus Facilities, and Paratransit	527.8	2,255.8	2,783.6
Operations and Business Support	293.8	1,253.0	1,546.8
<b>Total Capital Investments</b>	<b>\$2,205.5</b>	<b>\$10,207.0</b>	<b>\$12,412.4</b>
Revenue Loss from Capital Projects	\$10.0	\$50.0	\$60.0
Debt Service - Dedicated Funding	172.9	1,739.2	1,912.1
<b>Total Capital Program Cost</b>	<b>\$2,388.4</b>	<b>\$11,996.2</b>	<b>\$14,384.5</b>



# Examples of Metro's Capital Projects

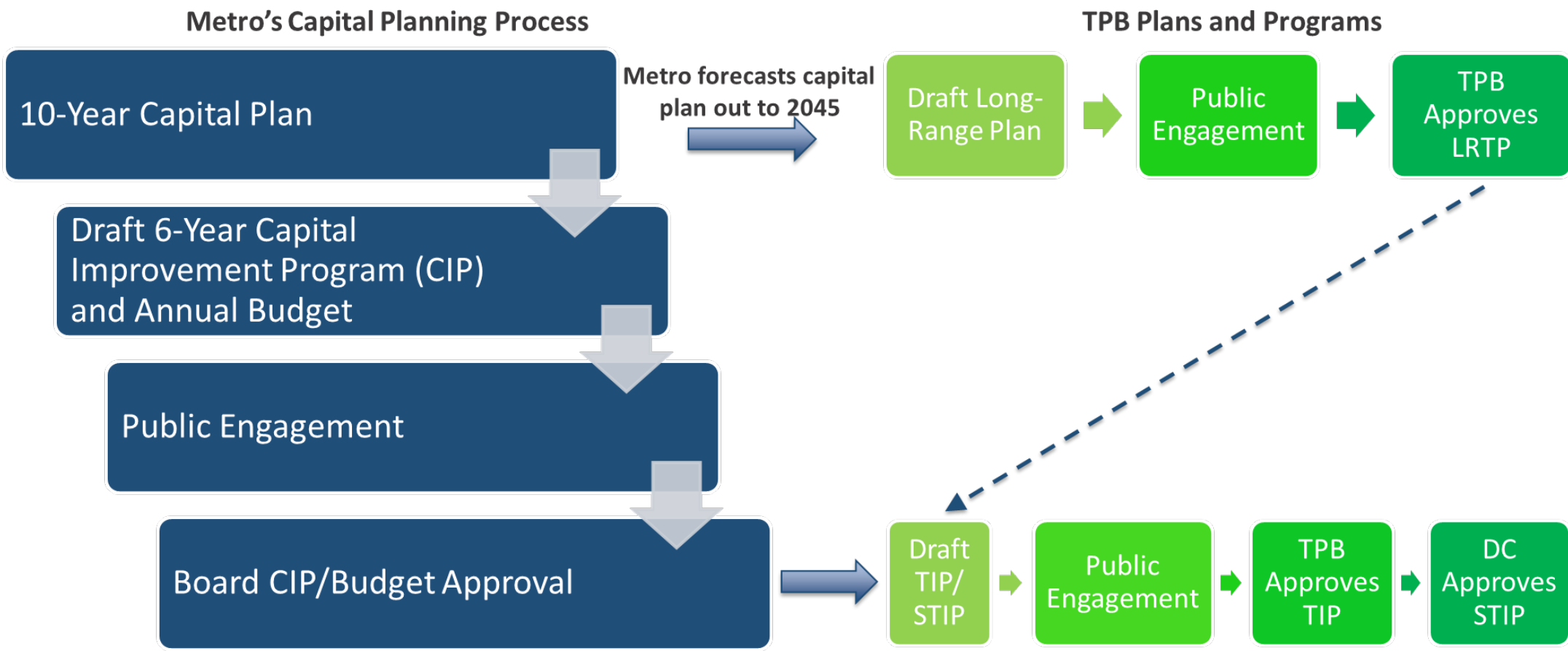


- 8000-series railcar acquisition
- Planning for next-generation train control
- Upgrade of rail power systems
- Station access/circulation projects
- Mobile fare payments and new faregates
- Repairing tracks, bridges & aerial structures
- Ventilation and water mitigation
- Metro Integrated Comms Center (MICC)
- Develop plan for Blue, Orange, Silver lines



- Complete Better Bus Network Redesign
- Begin transition to 100% zero-emissions buses
- Overhaul 100 buses/year
- Purchase 200 MetroAccess vehicles
- Replace / upgrade bus fareboxes
- Plan and design bus priority projects
- Improve bus stops and transit centers
- Rehab and reconstruct bus garages
- Install electric bus charging infrastructure

# How Metro Incorporates Needs into Regional Plans



# Metro's Projects in Visualize2045 and the TIP

## visualize 2045

### State of Good Repair

Repair and replacement of existing assets to ensure continued reliability and safety

### Modernization

Upgrading facilities, vehicles, and other infrastructure with new technology, etc. to improve service and/or function

### Capacity & New Needs

Extending Metro service into new areas, increasing passenger carrying capacity, or improving vehicle throughput capacity

## fiscal year 23-26 Transportation Improvement Program

### Railcars and Railcar Facilities

Repair, replacement, and rehabilitation of railcars and/or expansion of railyards

### Stations & Passenger Facilities

Repair and modernization of stations, stops, and other passenger facilities

### Rail Systems

Repair and modernization of train control, power, comms, other systems

### Track & Structures Rehabilitation

State of good repair for tracks, tunnels, and other structures

### Bus, Bus Facilities, and Paratransit

Purchasing or rehabilitating buses and paratransit vans, rehabbing and modernizing bus garages, etc.

### Business & Operations Support

Administrative facilities, equipment, IT and other systems technology, project support



# Q & A

Questions? Contact:

Mark Phillips, Director of Regional Mobility Planning – [mephillips@wmata.com](mailto:mephillips@wmata.com)

Erica Tompkins, Director of Capital Plan & Program Development