



## **COVID-19 Travel Monitoring Snapshot**

### **An Analysis of Monthly Traffic and Enplanement Data, January - August 2020**

Published: October 2020

These charts were developed to illustrate how the COVID-19 pandemic is impacting travel in the Metropolitan Washington Region. The charts were prepared by COG/TPB staff using Continuous Count Station (CCS) data collected by the District of Columbia, Maryland, and Virginia as well as enplanement data provided by the Metropolitan Washington Airports Authority (MWAA) and BWI Thurgood Marshall Airport. The intention is to update these charts on a monthly basis as data become available.

The first set charts display the traffic observed at CCS in the TPB Modeled Region during the COVID-19 outbreak. The analysis is further broken down by the jurisdictional groupings of the Core, Inner, and Outer Rings. A map showing the location of each station is provided for each jurisdictional grouping. The analysis is limited to the CCS that were operating and producing reliable data in both 2020 and 2019.

#### **MONTHLY AVERAGE PERCENT CHANGE**

The bar charts show the average percent change in traffic volumes compared to the equivalent 2019 month. The percent change is calculated for each station and those are averaged for the TPB Region and each of the Core, Inner, and Outer Rings.

#### **WEEKLY AVERAGE DAILY TRAFFIC**

The Weekly Average Daily Traffic charts show average weekday traffic volumes using lines and average daily traffic on weekends using columns. Traffic in 2020 is displayed in purple and 2019 traffic for the corresponding weeks is shown in green. Total daily traffic volumes are calculated for each station and the results are averaged by week for the TPB Region and each of the Core, Inner, and Outer Rings.

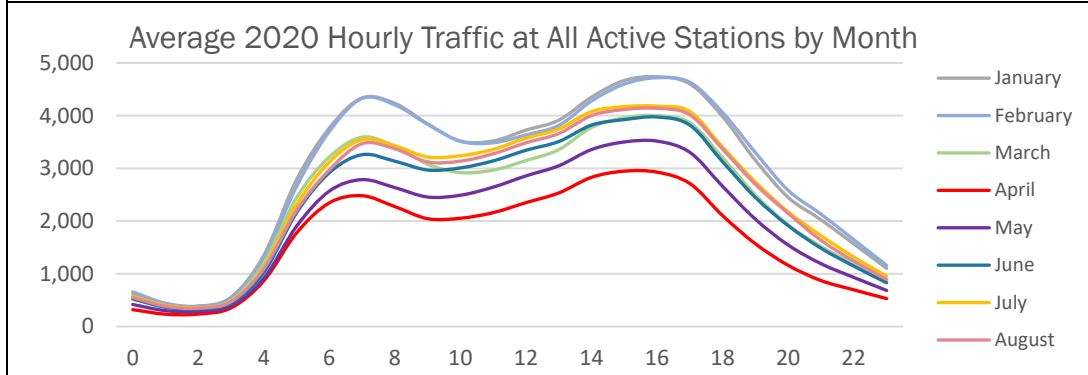
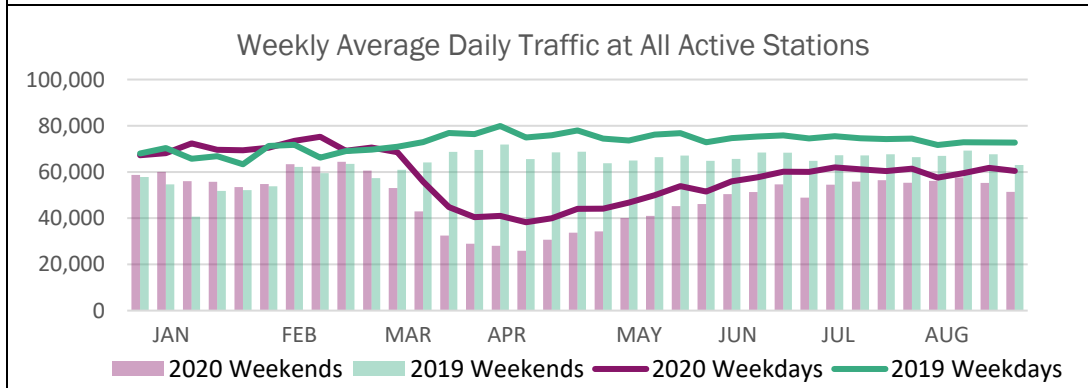
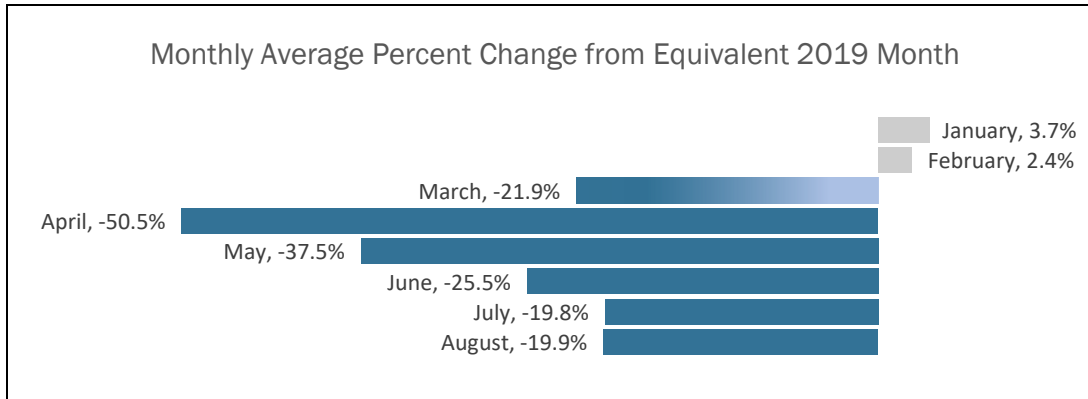
#### **AVERAGE HOURLY TRAFFIC**

The average hourly traffic charts show hourly traffic volume trends for each month of 2020. The average weekday hourly volume by month is calculated for each station and these are averaged for the TPB Region and each of the Core, Inner, and Outer Rings.

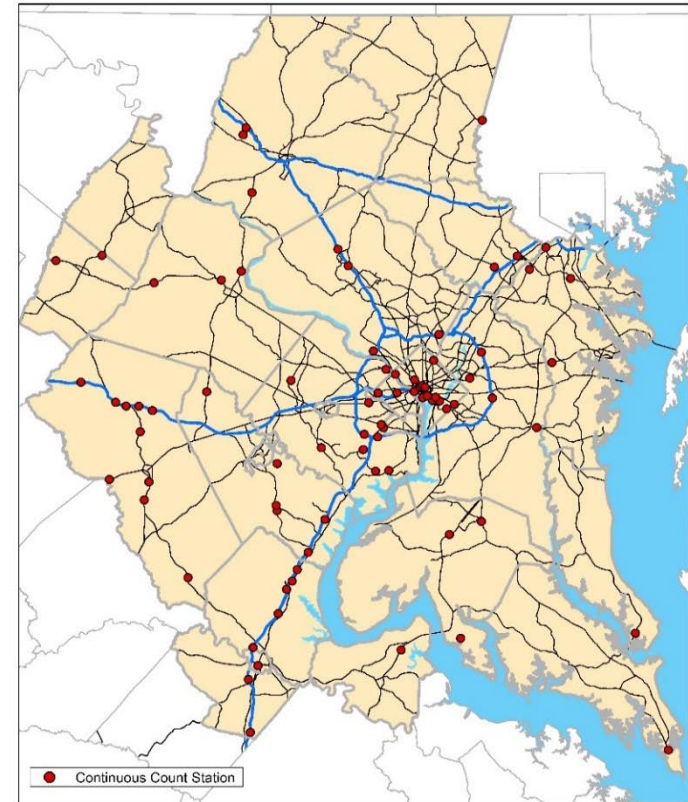
#### **MONTHLY ENPLANEMENT DATA**

The monthly enplanement charts show the total number of enplanements at each of the Washington/Baltimore area major airports including Ronald Reagan Washington National Airport (DCA), Washington Dulles International Airport (IAD), and Baltimore Washington International Thurgood Marshall Airport (BWI). Total monthly enplanements are shown in orange for each month of 2020 and in blue for each month in 2019.

# Comparison of Monthly 2020 & 2019 Traffic at all Continuous Count Stations in the TPB Modeled Region

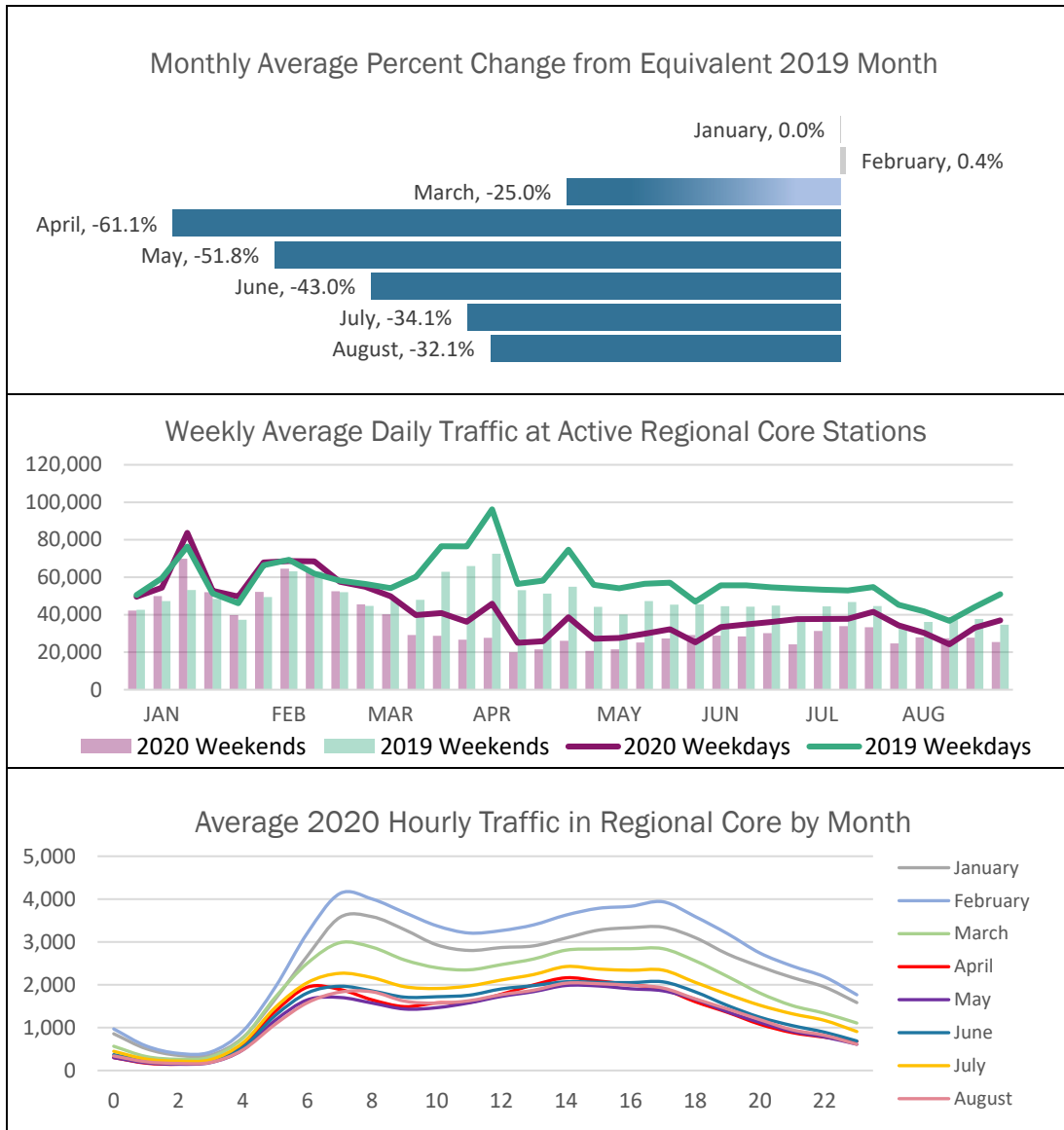


August 2020 Active Continuous Count Stations in the TPB Modeled Region

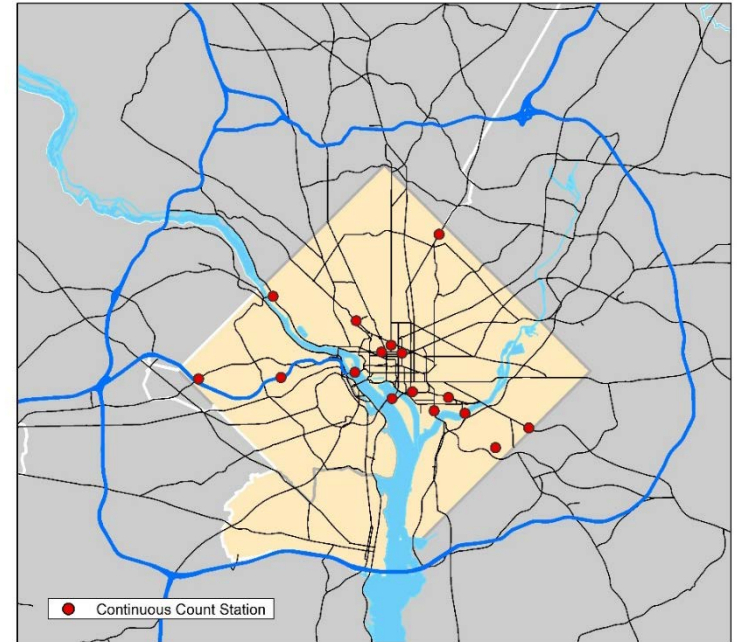


In the TPB Modeled region as a whole, traffic decreased beginning in mid-March, reaching a low in April of 50 percent less than April 2019, and began to rebound in May. In the summer months, traffic levels were about 20 percent lower than the same period in 2019. Weekday hourly traffic during the COVID-19 outbreak shows a less prominent AM Peak when compared with pre-pandemic levels.

## Comparison of Monthly 2020 & 2019 Traffic in the Core Jurisdictions of the TPB Modeled Region



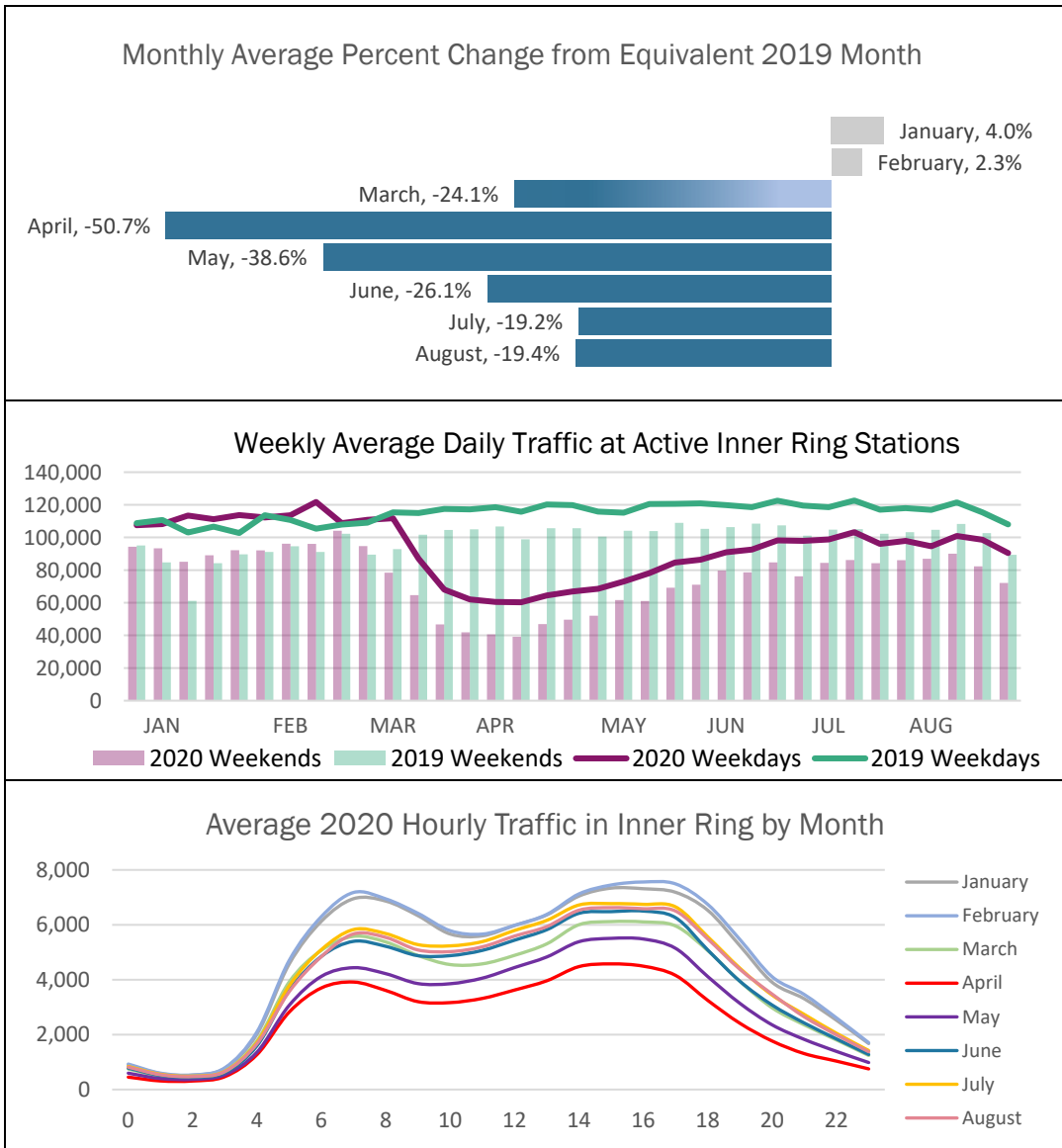
August 2020 Active Continuous Count Stations in the Regional Core Jurisdictions of the TPB Modeled Region



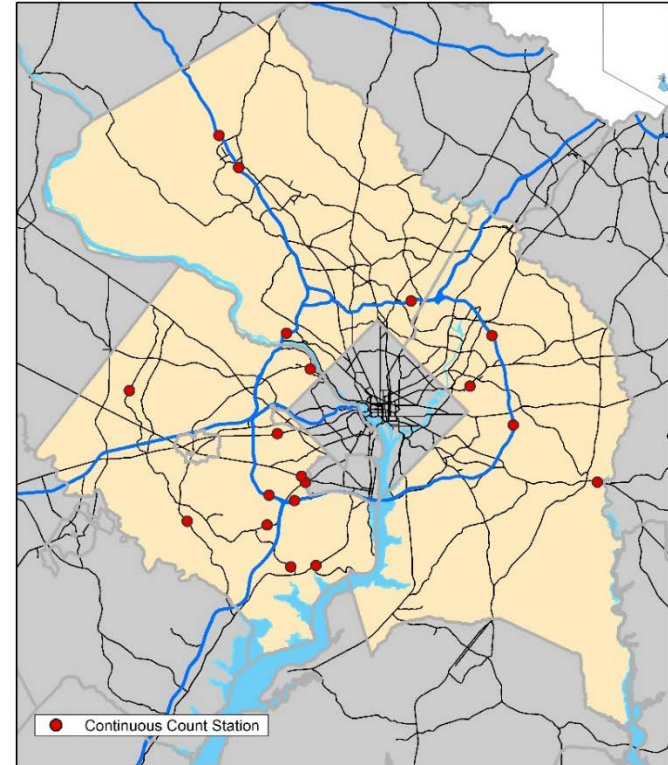
Traffic in the Regional Core decreased more than that of the region as a whole, reaching a low of over 60 percent less than 2019 levels in April. Regional Core traffic is experiencing a slower rebound, with summer 2020 levels still over 30 percent less than 2019 levels. Hourly weekday traffic has been fairly flat in the Regional Core during the COVID-19 outbreak trending towards one long midday peak rather than discrete AM and PM peaks.

*Please note: The April peaks seen on the Weekly Average Daily Traffic chart are due to data availability issues. Traffic counts were not available on some lower volume facilities, resulting in higher average daily levels. The difference between the 2020 levels and the 2019 levels are noteworthy while the total daily traffic levels are not.*

## Comparison of Monthly 2020 & 2019 Traffic in the Inner Jurisdictions of the TPB Modeled Region



August 2020 Active Continuous Count Stations in the Inner Ring Jurisdictions of the TPB Modeled Region

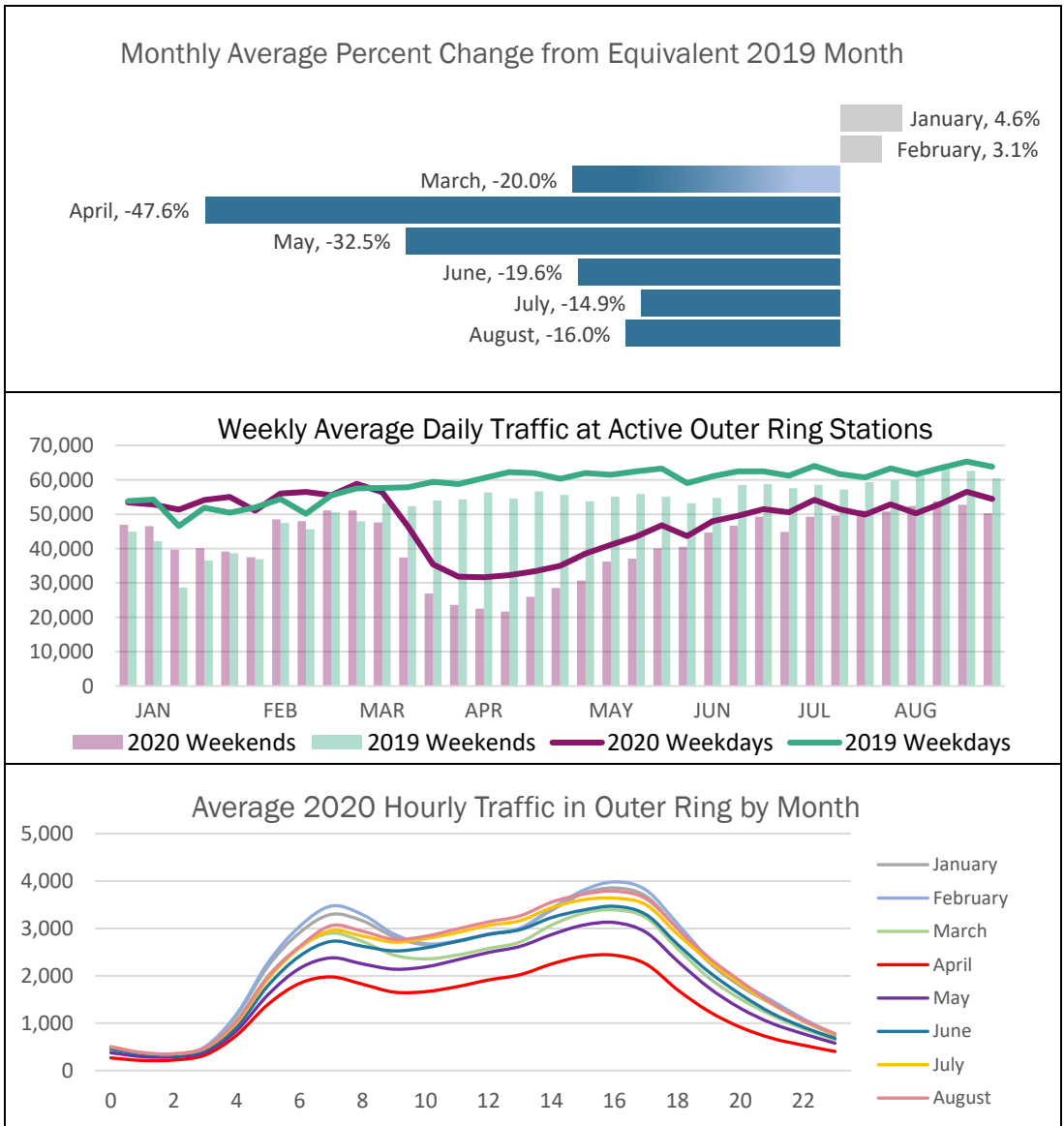


While overall summer traffic in the Inner Jurisdictions was still down almost 20 percent from 2019 levels, weekday midday traffic was back up to levels closer to January and February of 2020. AM and PM peaks are still apparent, although AM peak traffic continues to be much lower than pre-pandemic levels. Weekday versus weekend traffic in the Inner Jurisdictions follows similar patterns to that of 2019, although traffic levels are lower.

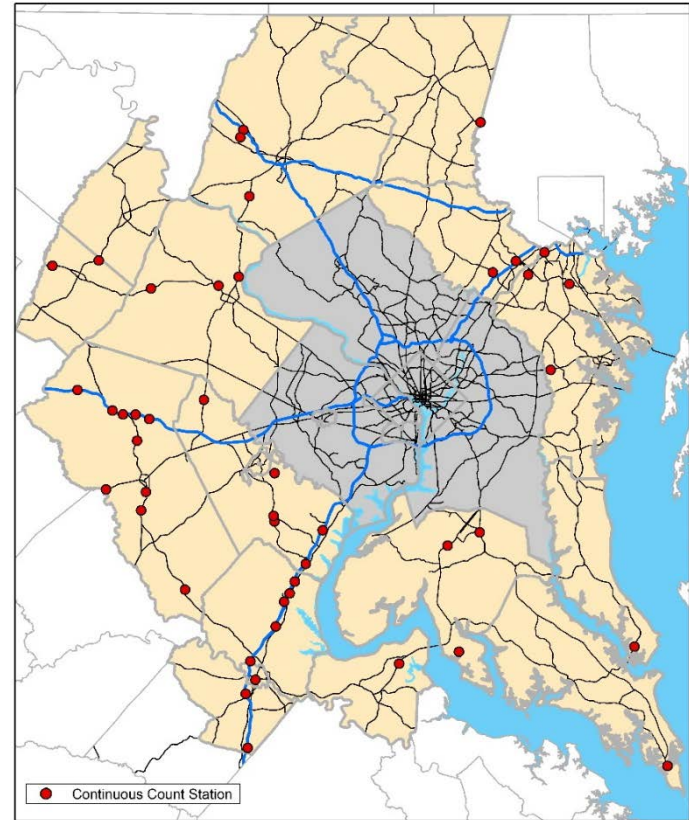




## Comparison of Monthly 2020 & 2019 Traffic in Outer Jurisdictions of the TPB Modeled Region



August 2020 Active Continuous Count Stations in the Outer Jurisdictions of the TPB Modeled Region



Overall traffic in the Outer Jurisdictions is rebounding the fastest of the jurisdictional groupings, with summer 2020 traffic levels about 15 percent lower than 2019 levels. Some summer weeks experienced roughly equal weekend and weekday average traffic volumes. Similar trends were seen in 2019, pointing to possible seasonal trends. The weekday hourly traffic in the Outer Jurisdictions is showing a trend towards high levels of midday traffic building during the day to a single PM peak.



# Monthly Enplanements at Washington/Baltimore Area Airports

Air travel decreased precipitously at the beginning of the COVID-19 outbreak. Enplanements at Washington/Baltimore area regional airports in April were only four percent of those during April of 2019.

Air travel is beginning to recover, total July 2020 enplanements at all major area airports were up to 26 percent of July 2019 levels.

