



## National Capital Region Transportation Planning Board

### Performance of the 2010 Financially Constrained Long-Range Transportation Plan

Metropolitan Washington Air Quality  
Committee (MWAQC)  
December 8, 2010

1



### 2010 CLRP and FY 2011-216 TIP

**1. What Is the CLRP?**

**2. What Shapes the CLRP?**

**3. How Does the CLRP Perform?**

2

## What Is the CLRP?

- Updated annually with regionally significant projects and programs planned through 2040
- Developed by state, regional and local transportation agencies and approved by the Transportation Planning Board (TPB)
- Policy Framework: Goals and objectives of the TPB Vision, adopted in 1998
- Must meet federal regulations, including financial constraint: Includes only projects for which funding is “reasonably expected to be available”.

3

## What Is the CLRP?

- Over 750 highway and transit projects

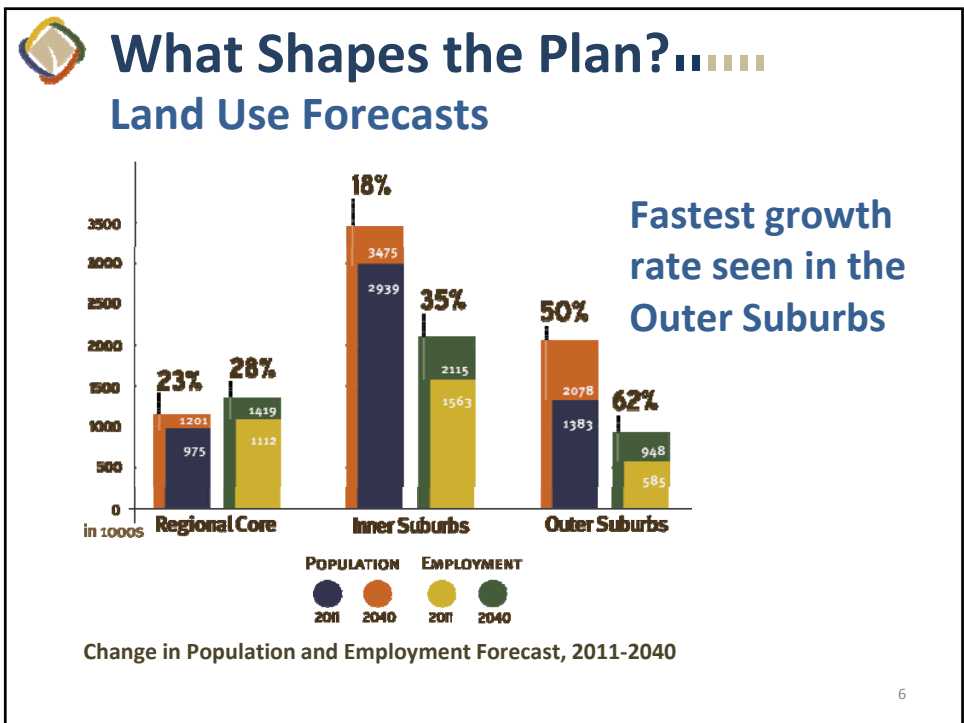


4

 **What Shapes the Plan?.....**

- Land Use Forecasts
- Financial Constraint
- Transit Fares and Constraint

5





## What Shapes the Plan?.....

### Land Use Forecasts

#### Households and Jobs in Regional Activity Centers

- From 2005 to 2040, households in Regional Activity Centers will increase by 107% - more than twice the rate for the region as a whole.
- By 2040, 55% of the region's jobs and 19% of the region's households are forecast to be concentrated in the Regional Activity Centers that make up less than 5% of the region's total land area.

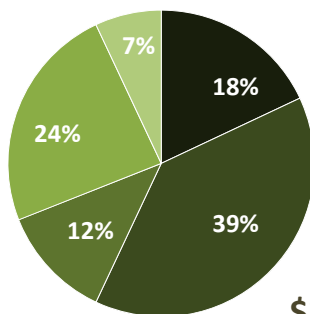


7



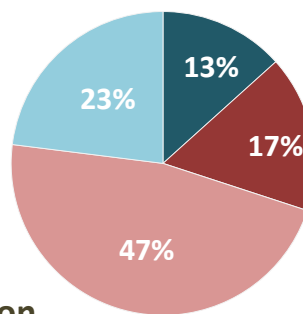
## What Shapes the Plan?.....

### Financial Constraint



CLRP Revenues 2011-2040

- Federal
- State/DC
- Local
- Transit Fares
- Private/Tolls

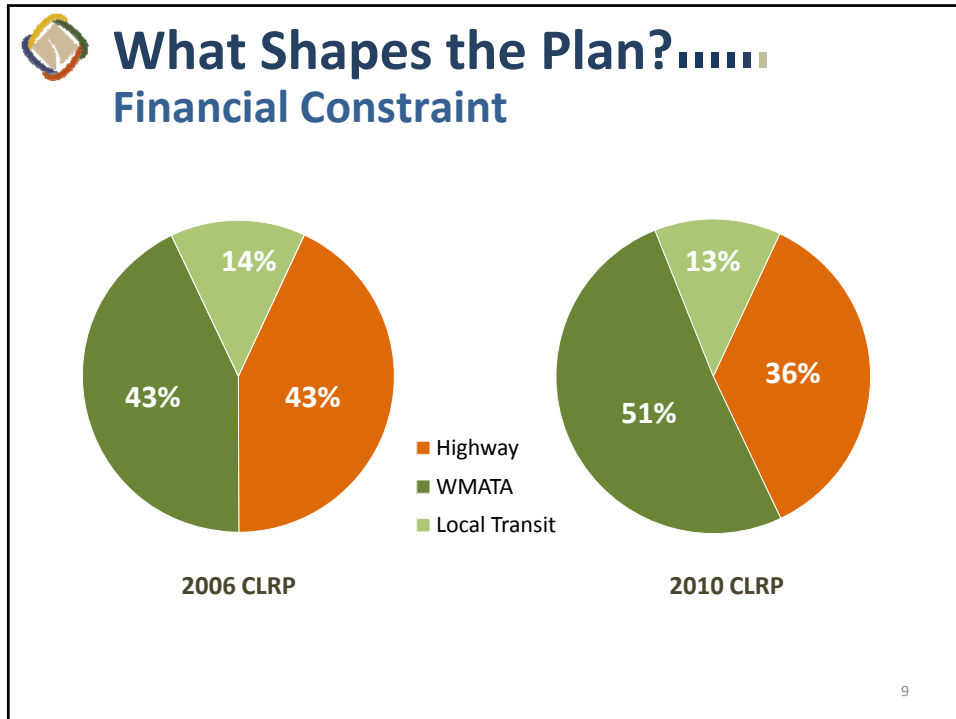



CLRP Expenditures 2011-2040

- Highway Expansion
- Transit Expansion
- Transit Operations/Preservation
- Highway Operations/Preservation

**\$222.9 Billion**

8



-  **What Shapes the Plan?.....**  
Transit Fares and Constraints
- Transit fares increased in 2010.
  - Federal and local funding for Metro Rehabilitation expires in 2020.
  - Transit ridership will be constrained at 2020 service levels.
- 10



## How Does the Plan Perform?.....

Some of the key goals from the TPB's Vision and COG's Region Forward and Climate Change Reports include:

- Reduce Vehicle Miles Traveled (VMT) per capita
- Reduce congestion on the region's highway and transit systems
- Increase accessibility to jobs
- Meet federal air quality standards and reduce mobile-source NOx, VOC and PM emissions
- Reduce mobile-source greenhouse gas emissions
- Increase rate of construction of bicycle and pedestrian facilities

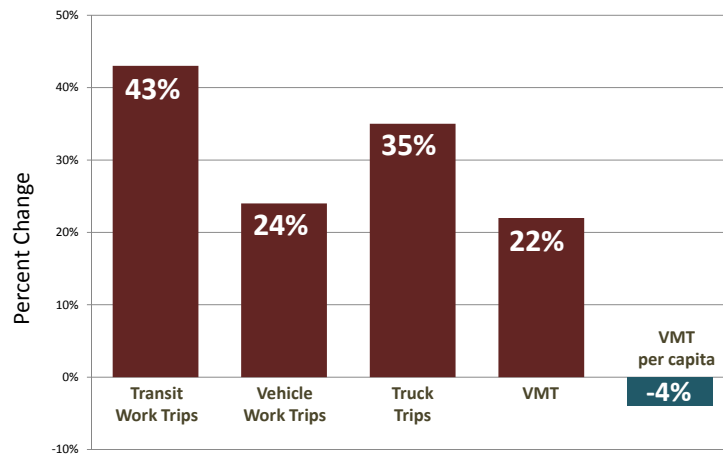
11



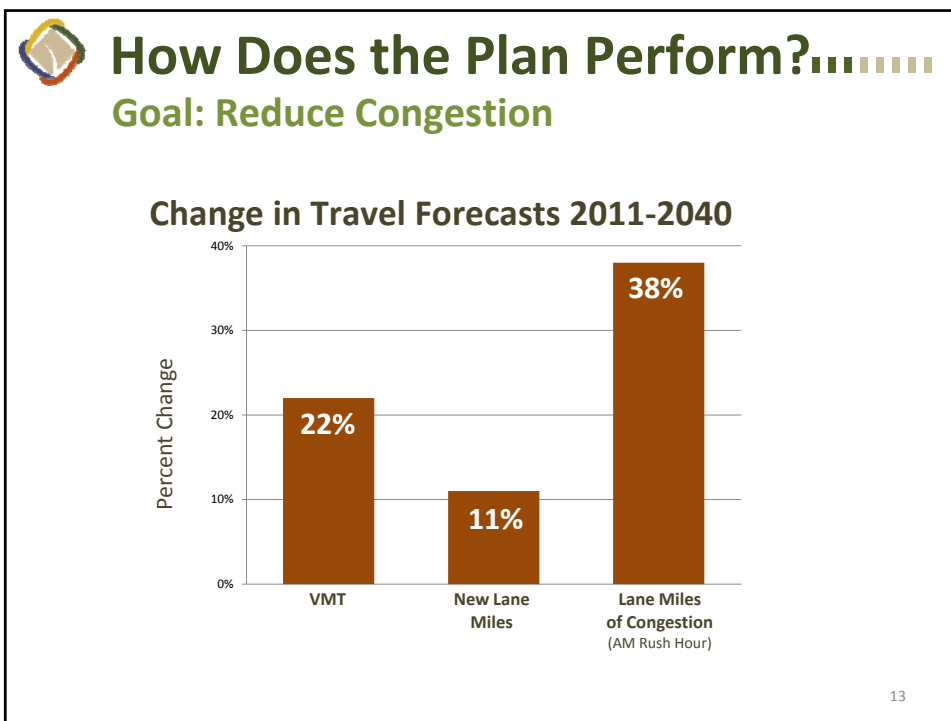
## How Does the Plan Perform?.....

Goal: Reduce VMT per capita

Change in Travel Forecasts 2011-2040



12



## How Does the Plan Perform?.....

### Goal: Reduce Congestion

#### Peak Hour Metrorail Passenger Loads

Line	Current	2040
Red	Satisfactory	Congested
Blue	Satisfactory	Satisfactory
Orange/Silver	Congested	Highly Congested
Yellow	Satisfactory	Highly Congested
Green	Satisfactory	Highly Congested

- Satisfactory (<100 people per car)
- Congested (100-120 people per car)
- Highly Congested(>120 people per car)

14

