

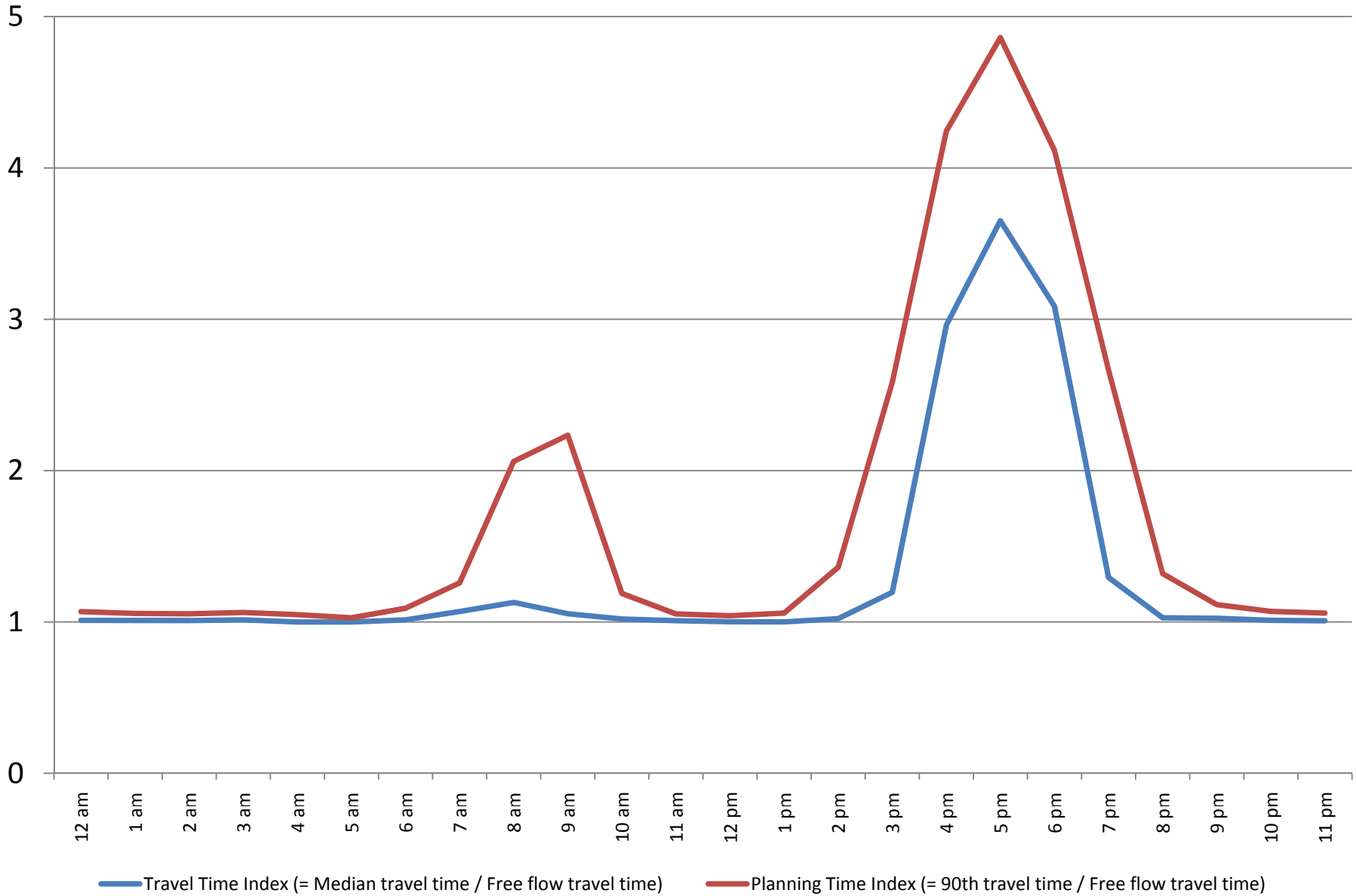
Travel Time Index and Planning Time Index on National Capital Region Bridges for a Typical Weekday in 2011

(Only Tues, Weds and Thus; federal holidays excluded)

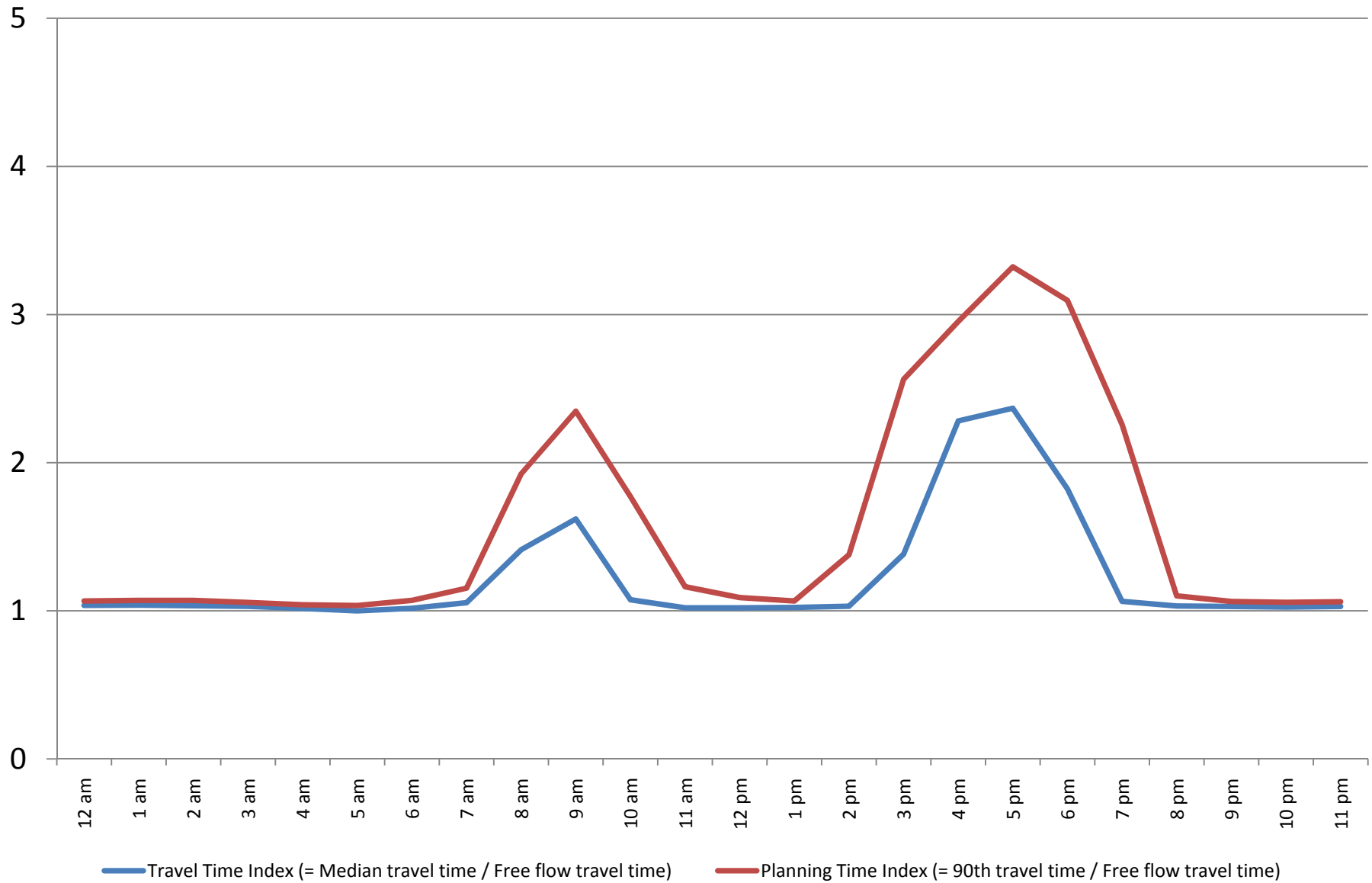
Wenjing Pu, DTP Staff

April 24, 2012

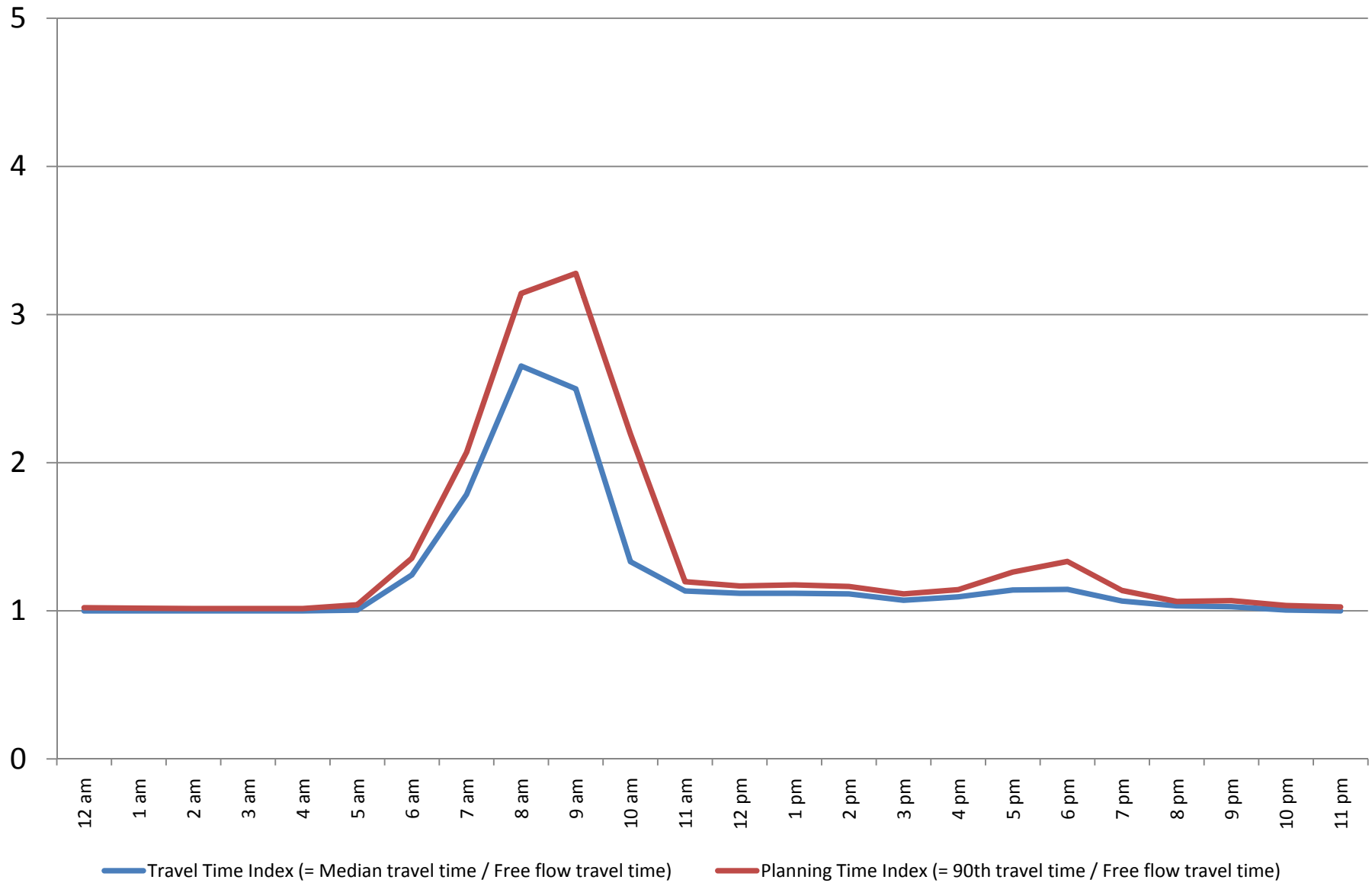
I-495 at American Legion Bridge, N/B (0.16 mile)



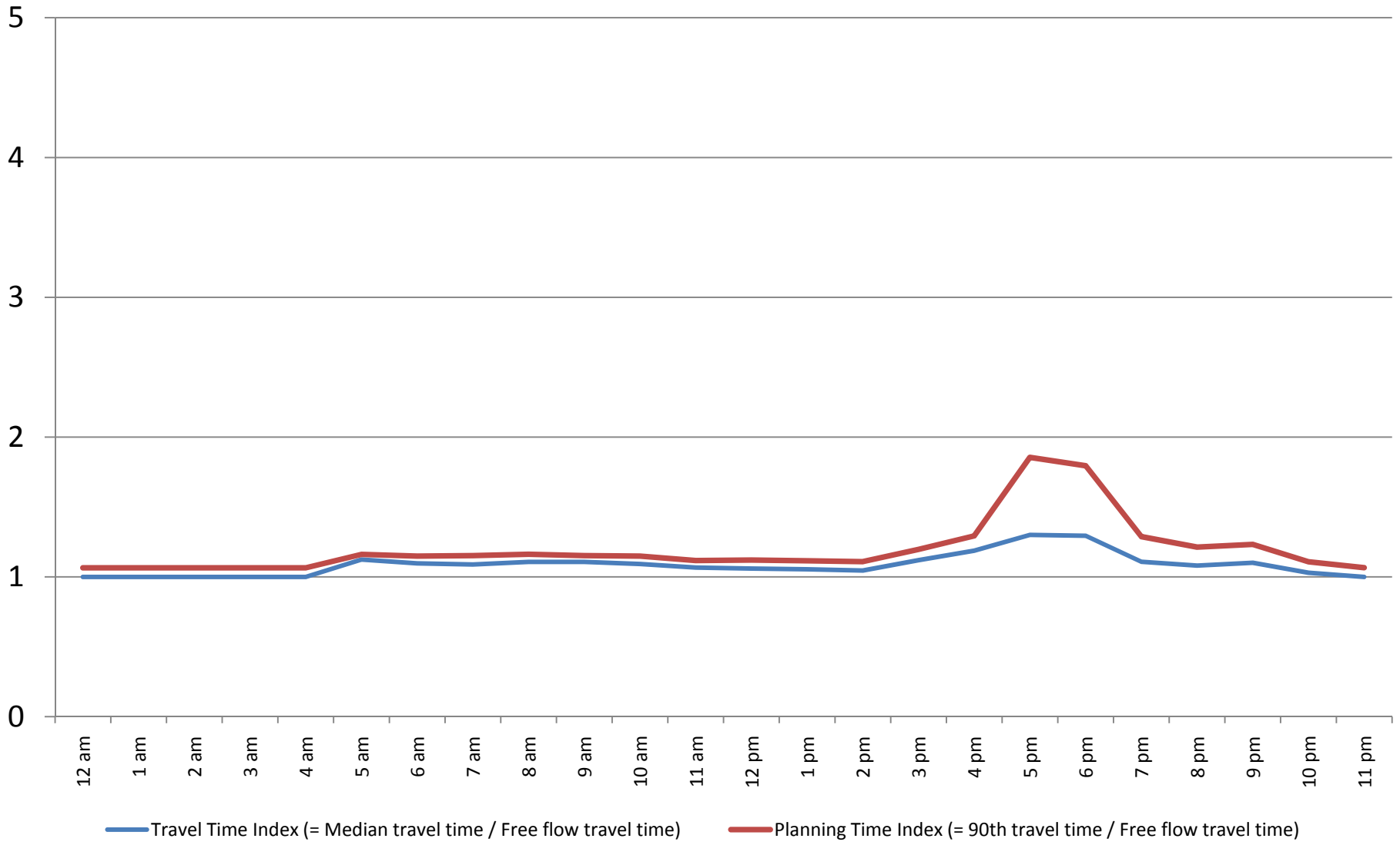
I-495 at American Legion Bridge, S/B (0.17 mile)



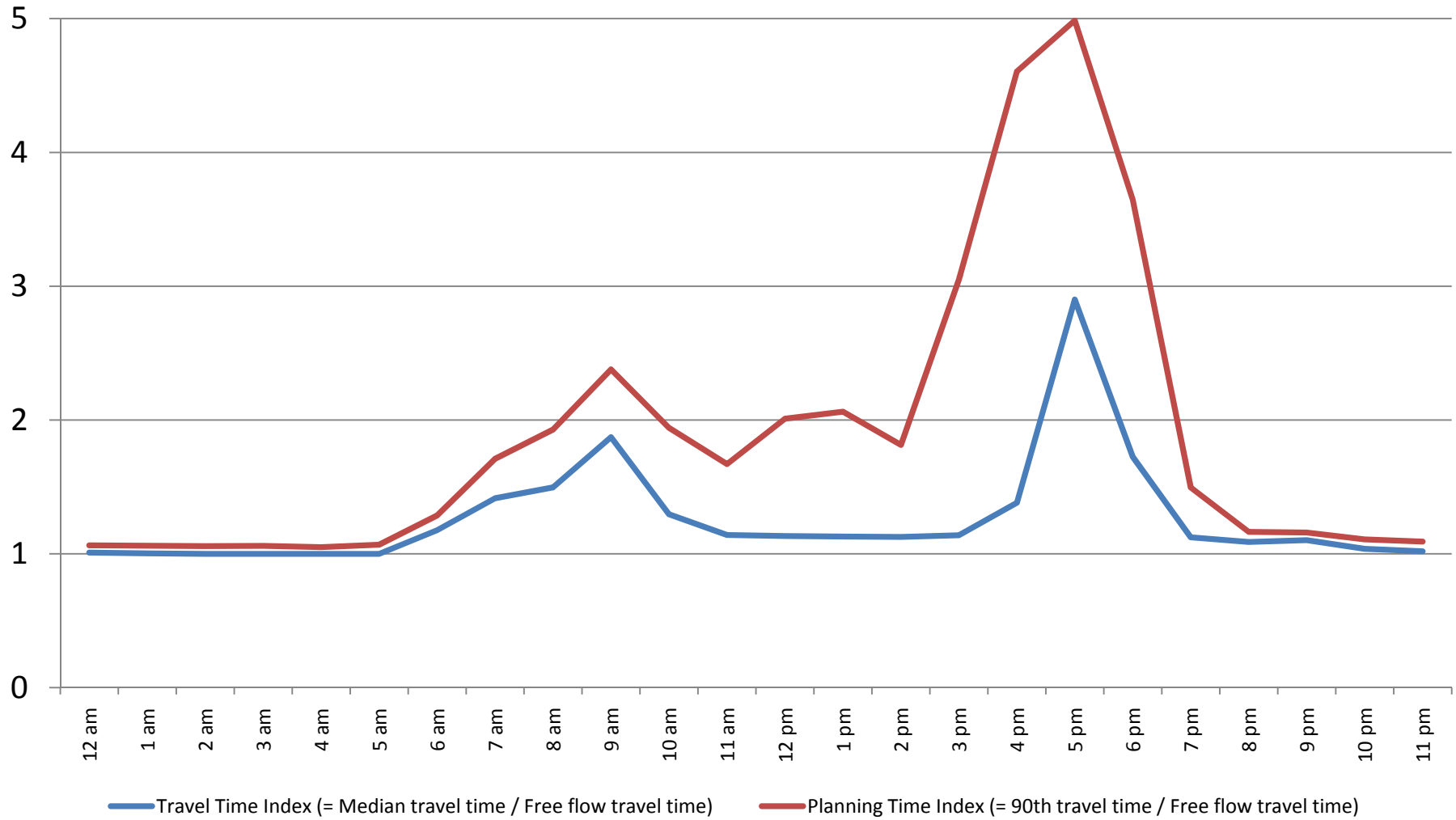
I-66 at Theodore Roosevelt Bridge, E/B (0.37 mile)



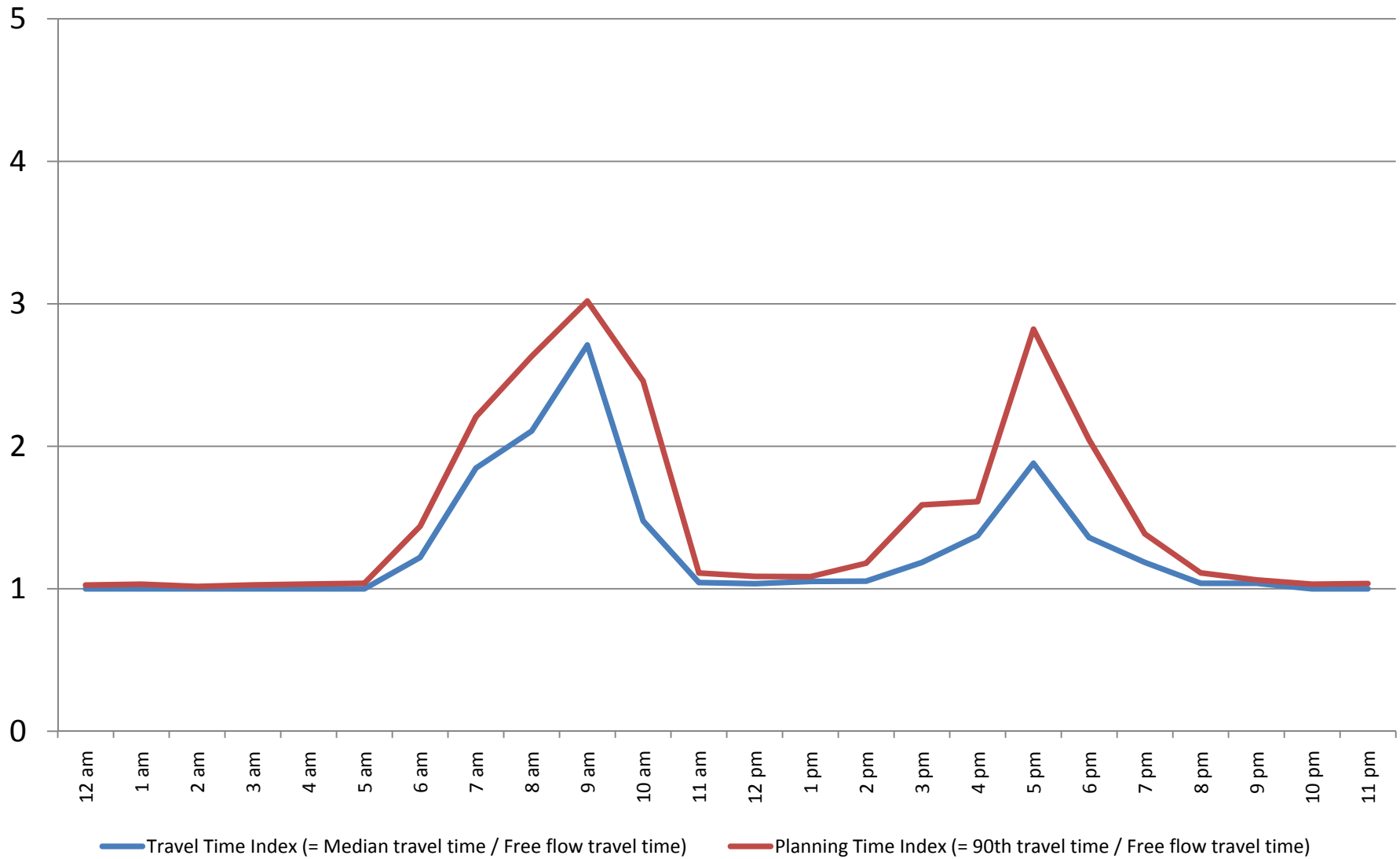
I-66 at Theodore Roosevelt Bridge, W/B (0.37 mile)



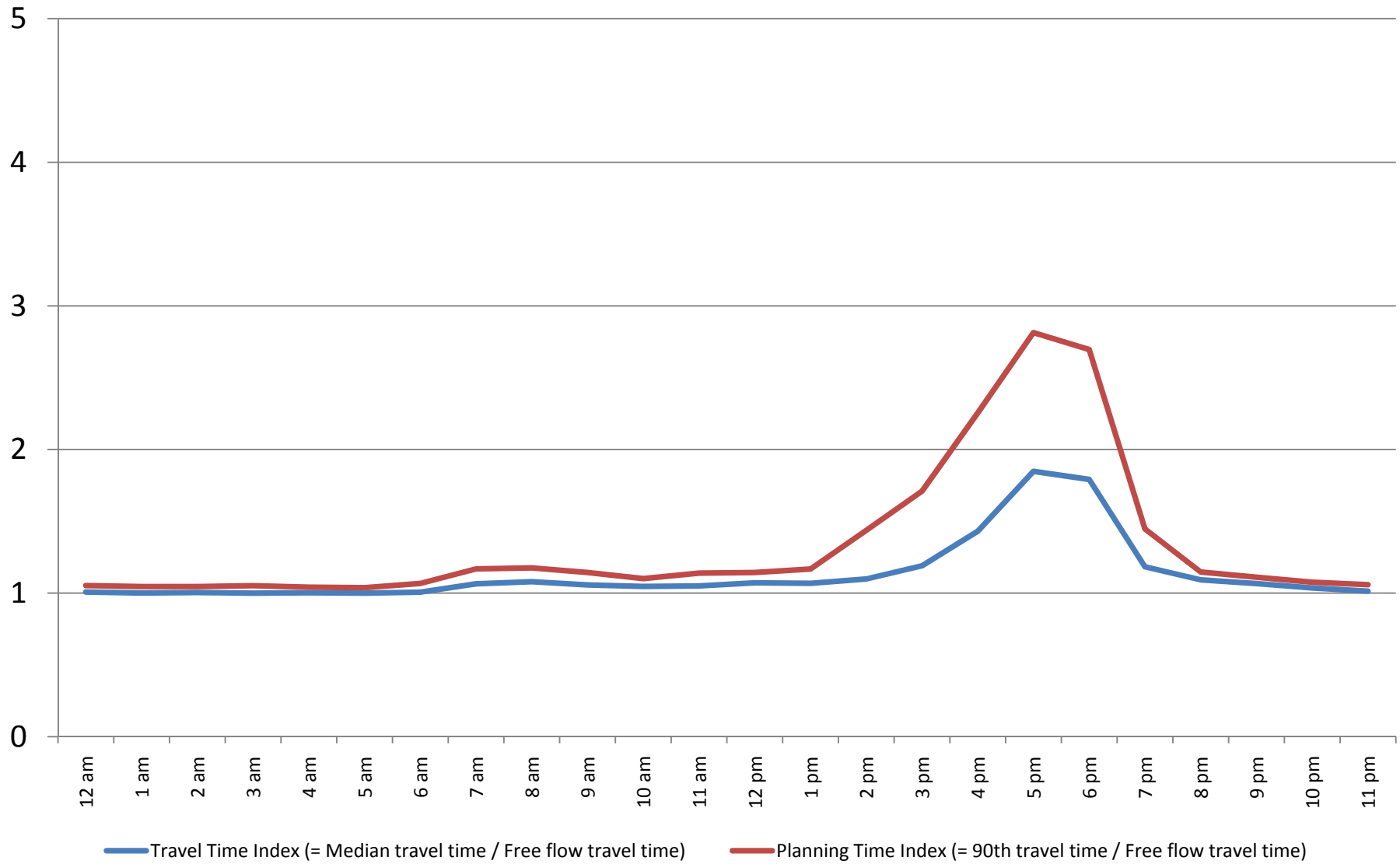
I-395 at Arland Williams Bridge, N/B (0.43 mile)



I-395 HOV at Rochambeau Bridge, N/B (0.35 mile)



I-395 at George Mason Bridge, S/B (0.41 mile)



I-395 HOV at Rochambeau Bridge, S/B (0.34 mile)

