

Status Report on the 2012 CMP Technical Report

MOITS Policy Task Force and Technical Subcommittee Meeting

March 13, 2012

Wenjing Pu

National Capital Regional Transportation Planning Board (TPB)
Metropolitan Washington Council of Governments (MWCOCG)

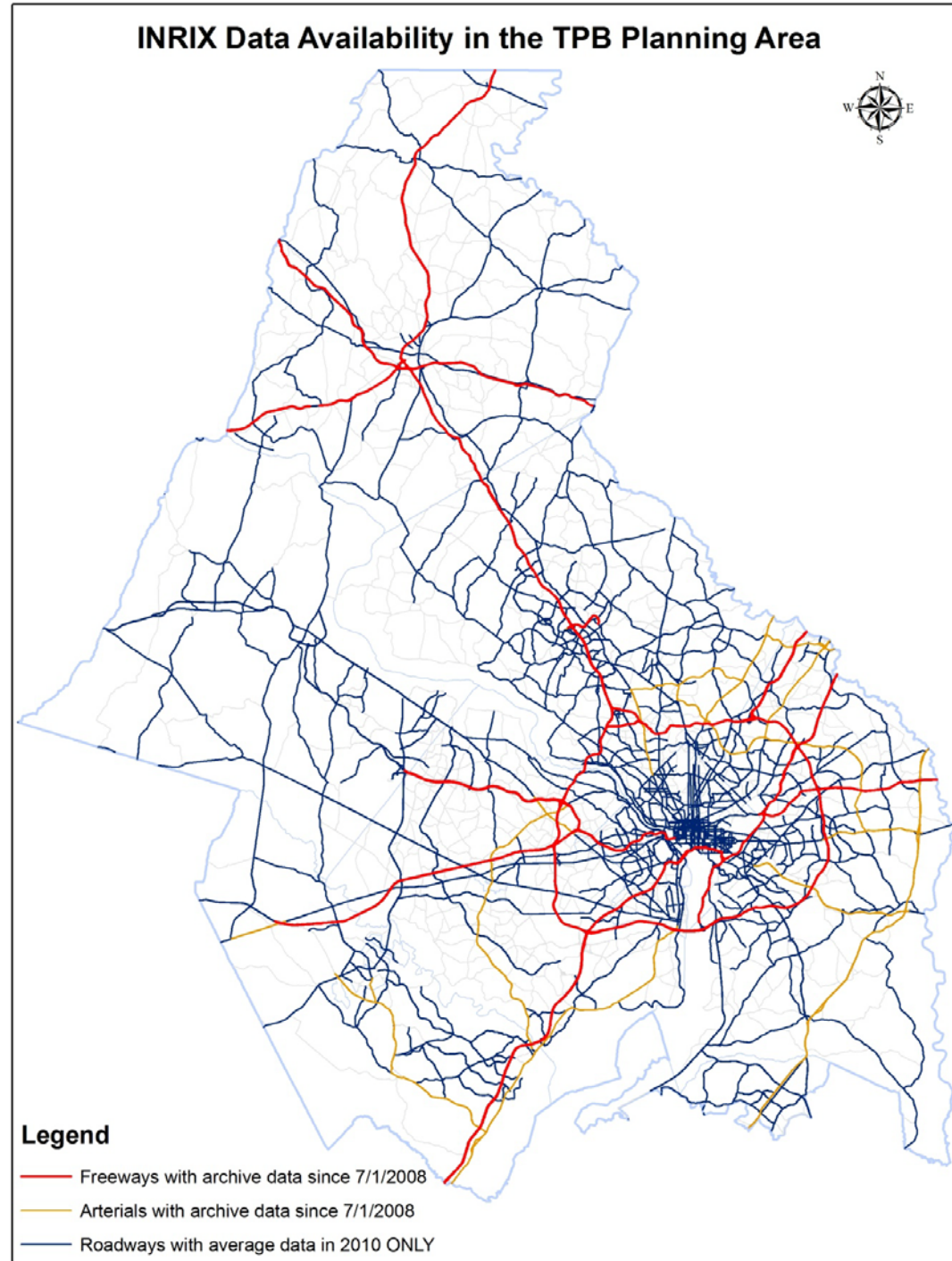
Four Major CMP Activities

- **CMP component of the CLRP**
 - www.mwcog.org/cmp
 - Identify congestion in the region
 - Develop and document a process describing how congestion management is considered at critical stages in the metropolitan transportation planning process
- **Congestion Management Documentation Forms for the CLRP and TIP**
 - Supporting CMP reference material
 - Reviewed and accepted by Travel Management Subcommittee and TPB Technical Committee
- **NCR Congestion Report (Dashboard)**
 - www.mwcog.org/congestion
 - Quarterly updated congestion information and spotlight strategies
- **CMP Technical Report**
 - Supporting technical background document to the CMP
 - Updated every two years

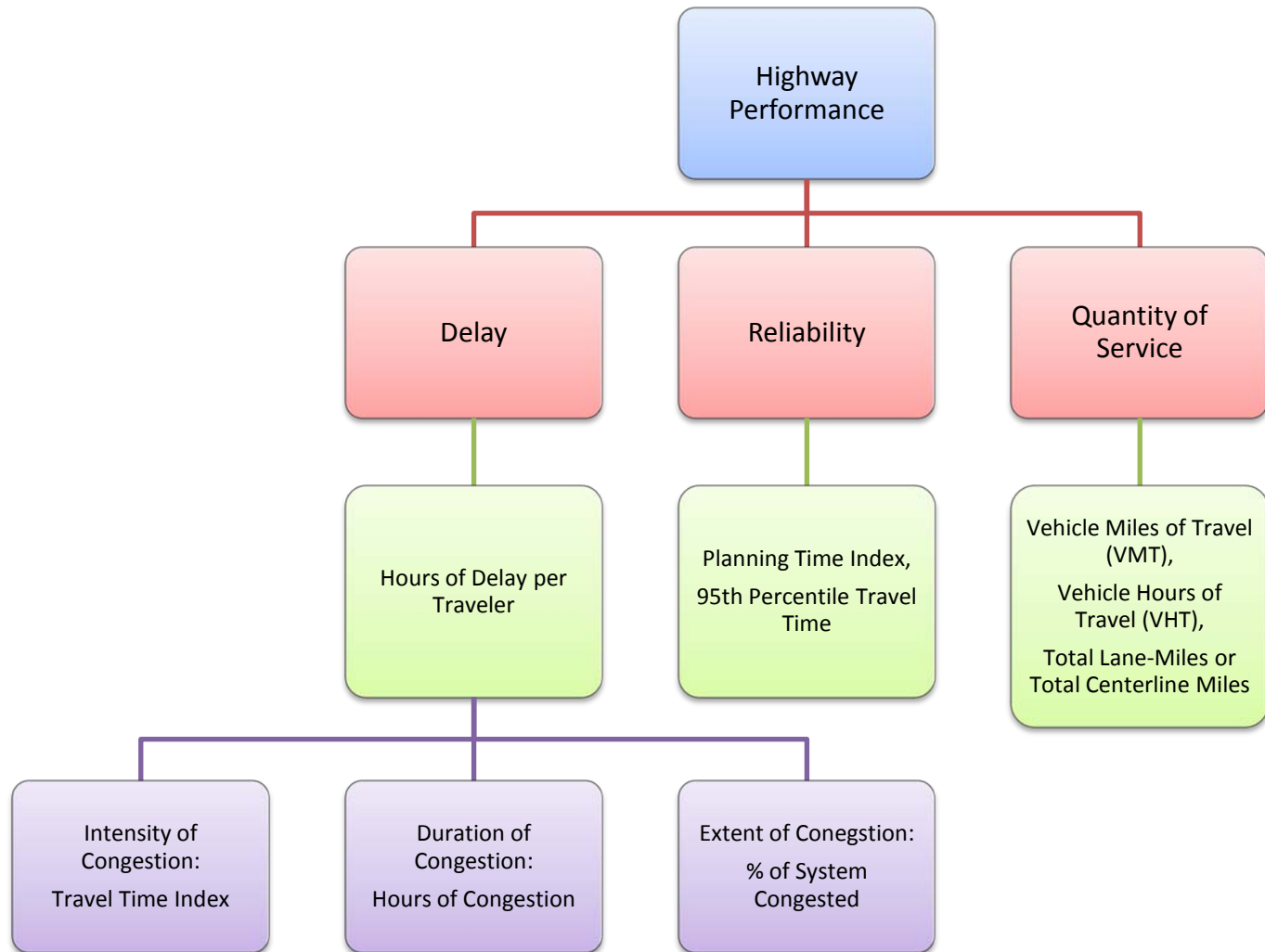
Status of the 2012 CMP Tech Report

- Completed
 - Information, documents and data compilation
 - Freeway congestion analysis
- Next step
 - Document writing
 - Major commute routes analysis
 - Arterial congestion analysis
 - Review/revise

INRIX Data Availability as of Dec. 2011

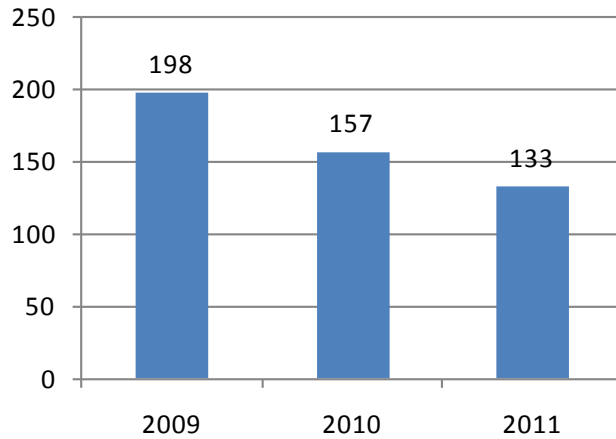


Hierarchical Highway Performance Measures

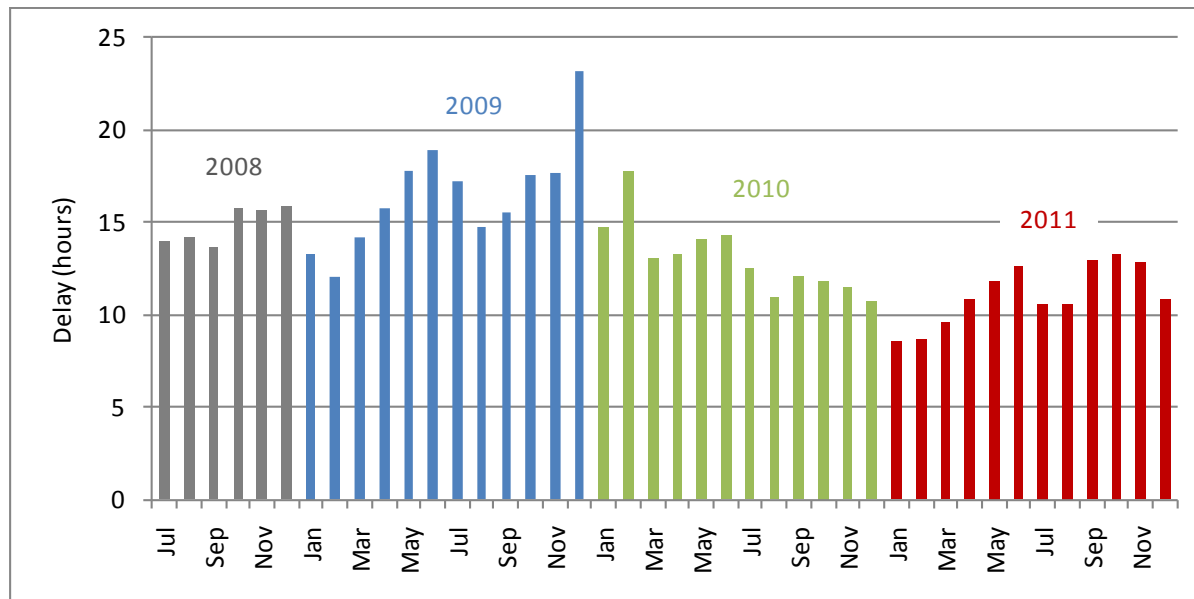
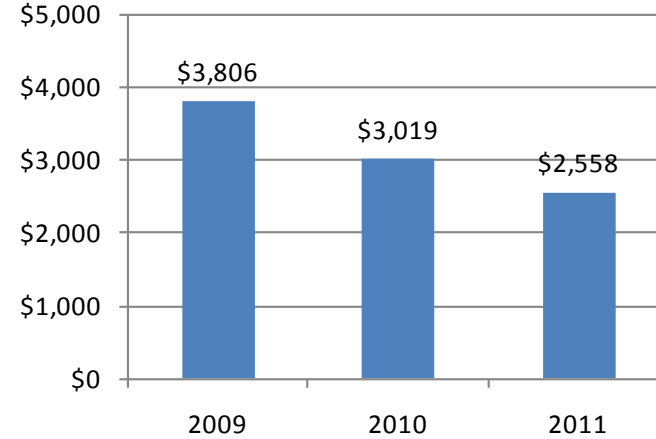


Delay

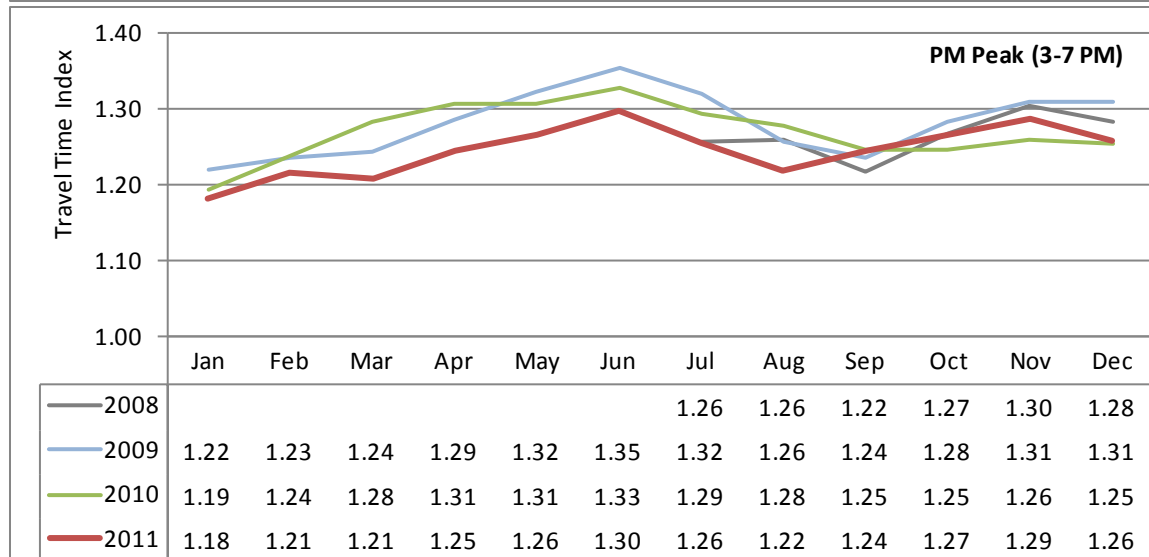
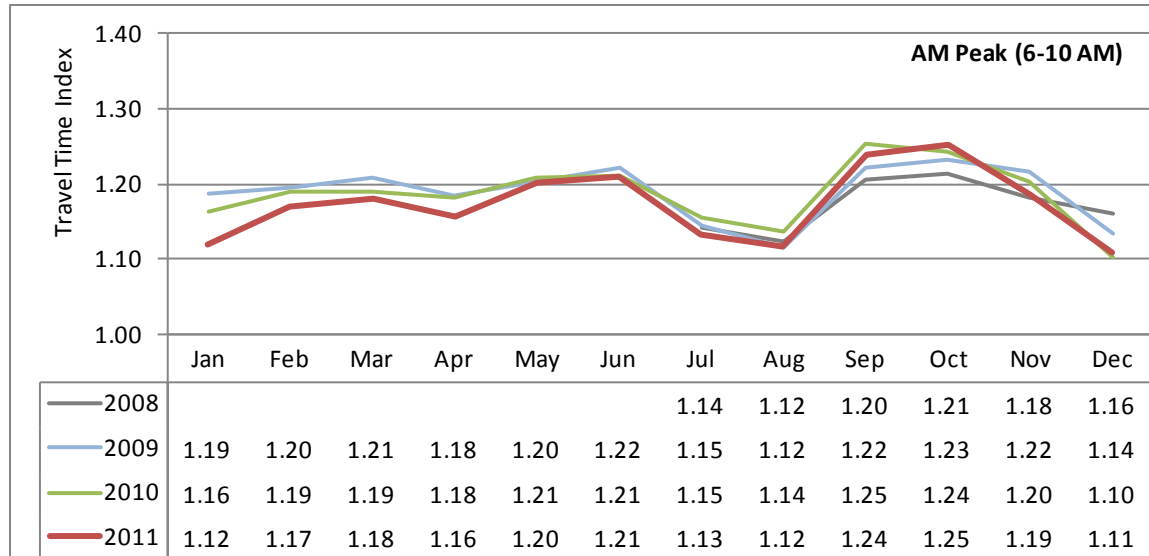
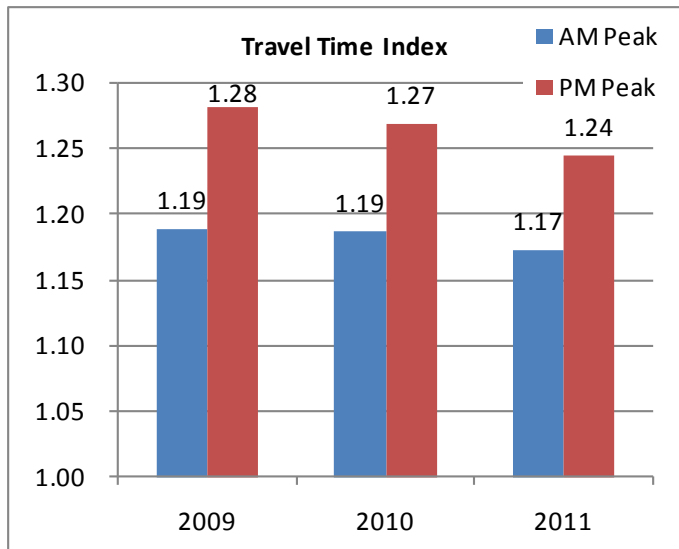
Annual Hours of Delay per Traveler (hours)



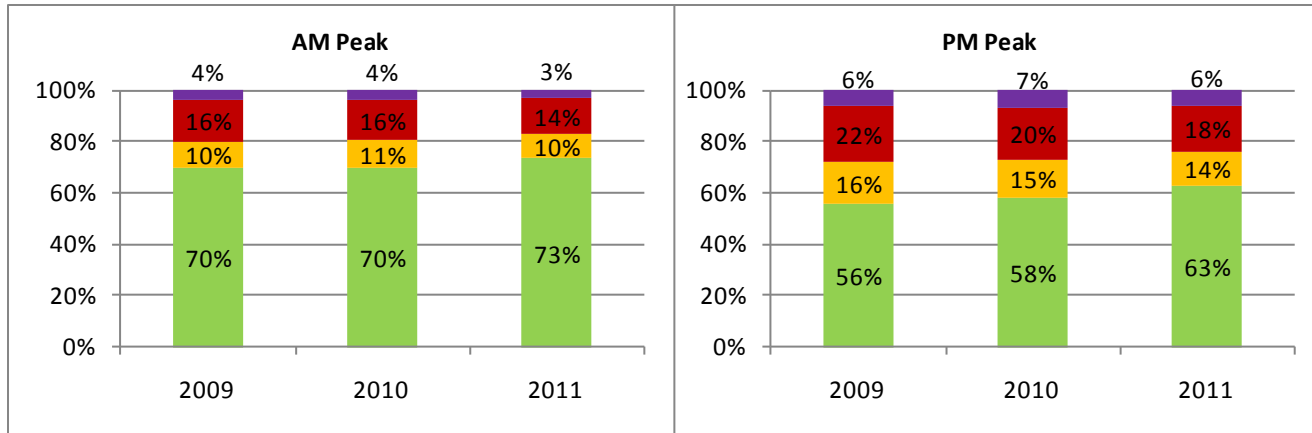
Annual Cost of Delay per Traveler (2011 \$)
(1 hour = \$19.24)



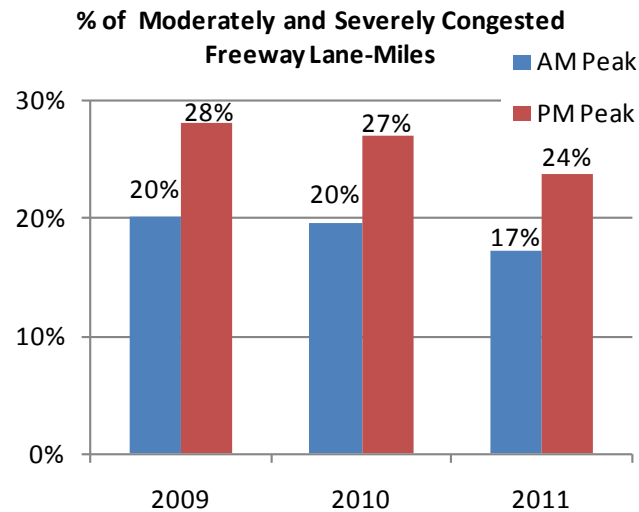
Travel Time Index



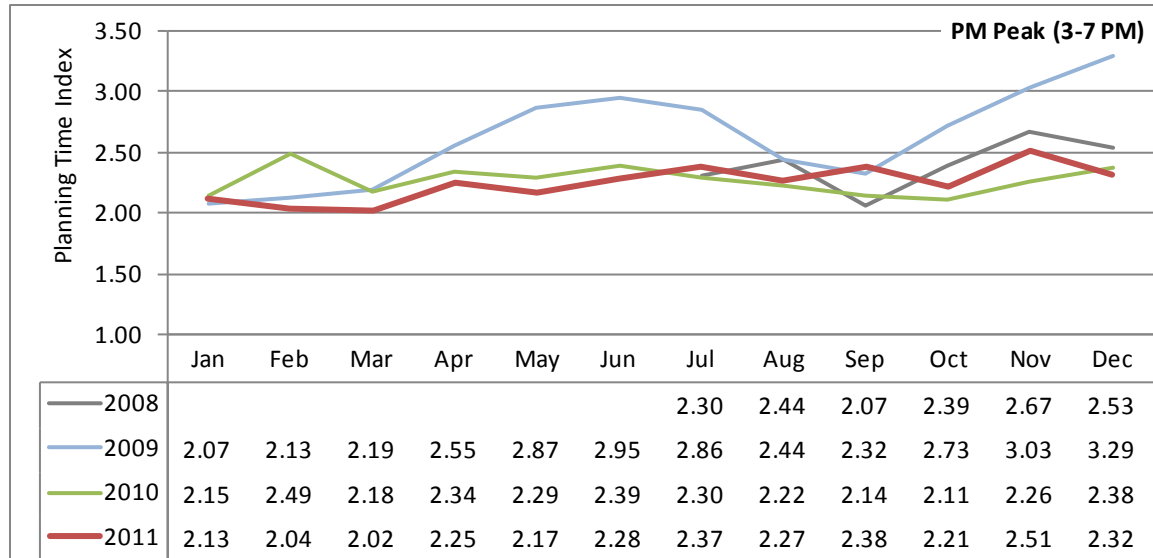
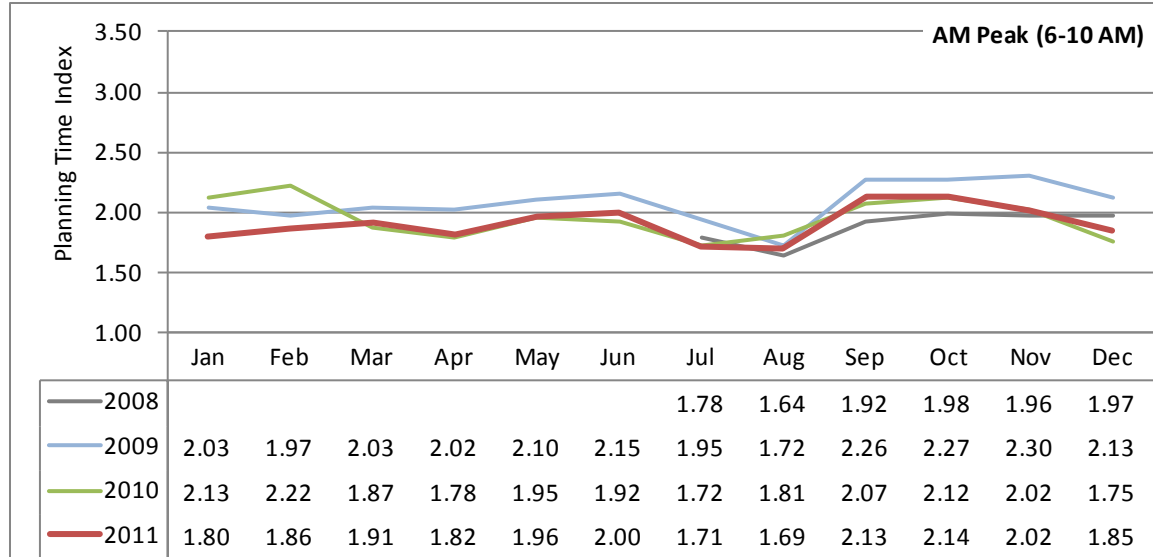
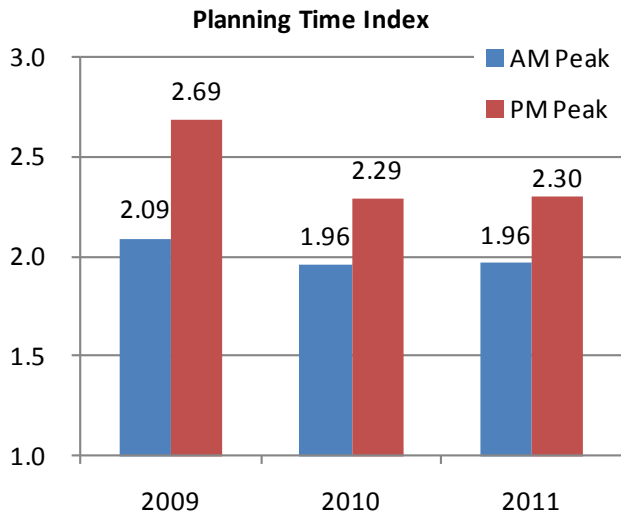
% Freeway Lane-Miles by Congestion Level



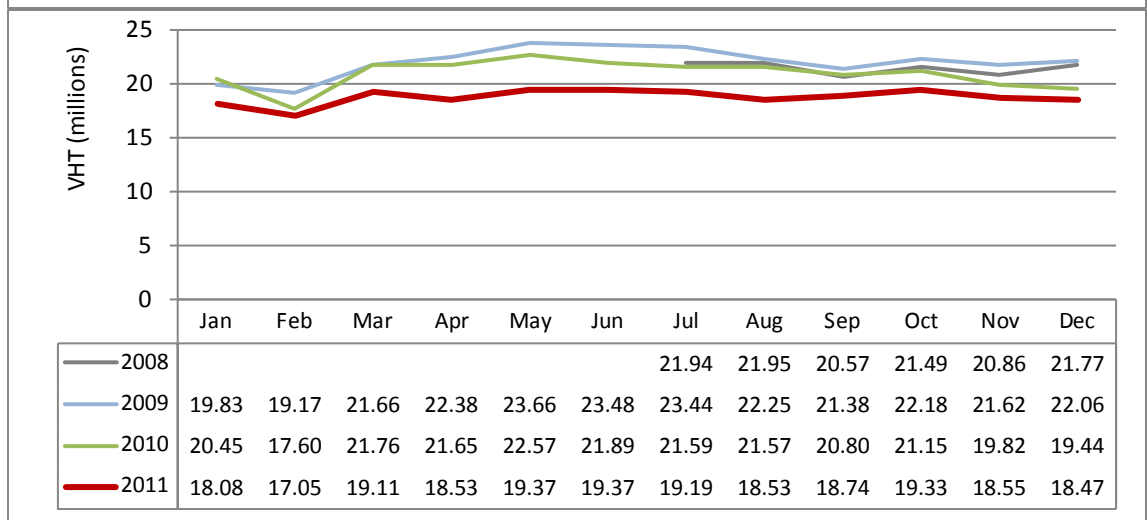
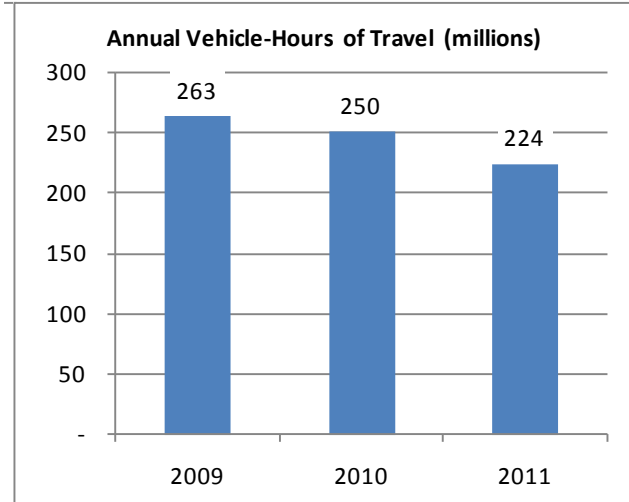
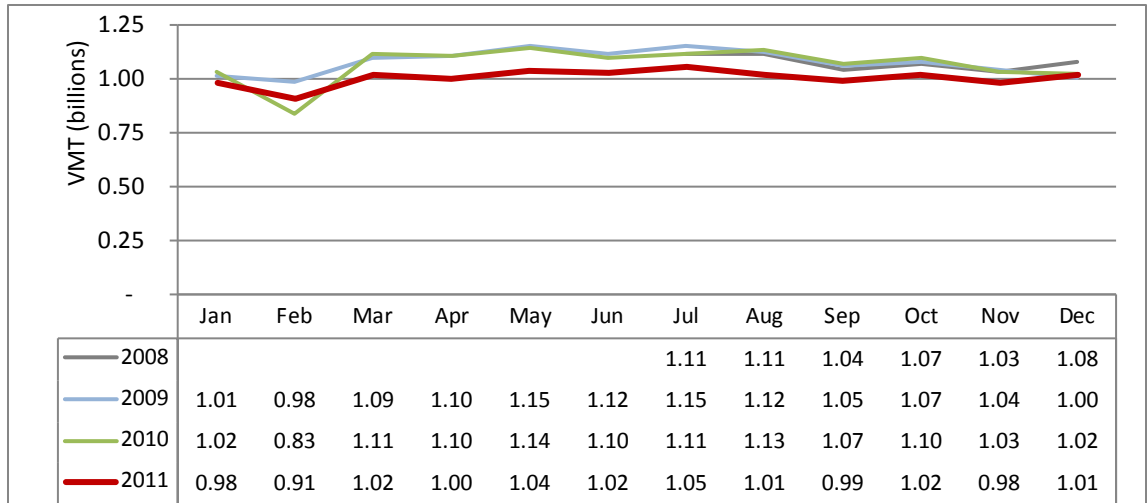
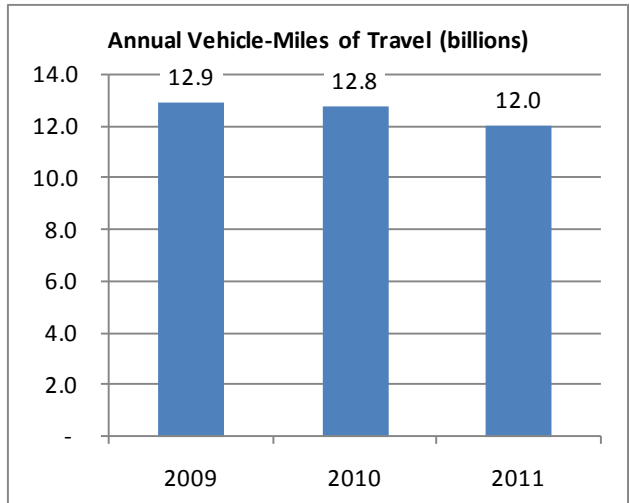
■ Uncongested (TTI < 1.15) ■ Light (1.15 ≤ TTI < 1.30) ■ Moderate (1.30 ≤ TTI < 2.00) ■ Severe (TTI ≥ 2.00)



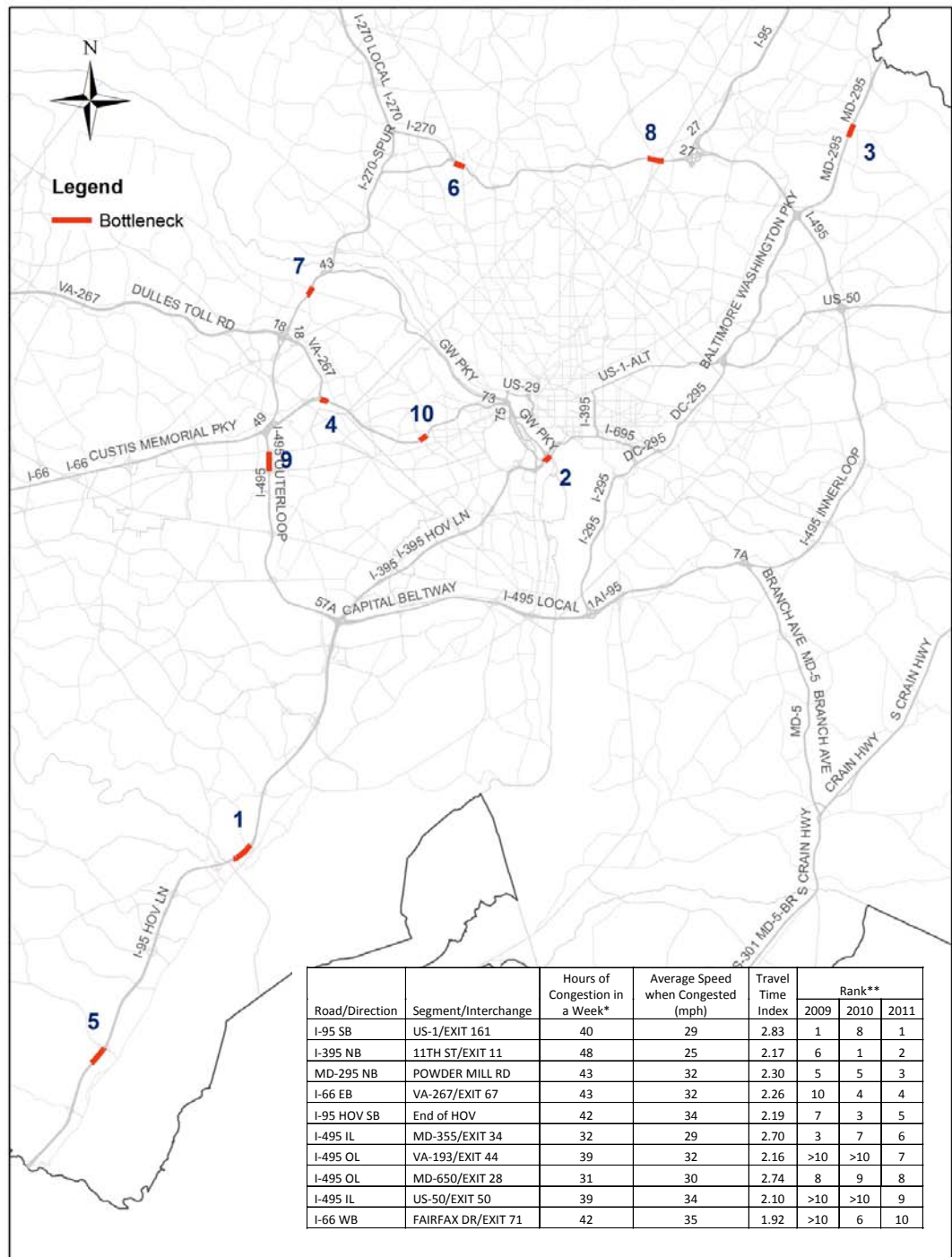
Planning Time Index



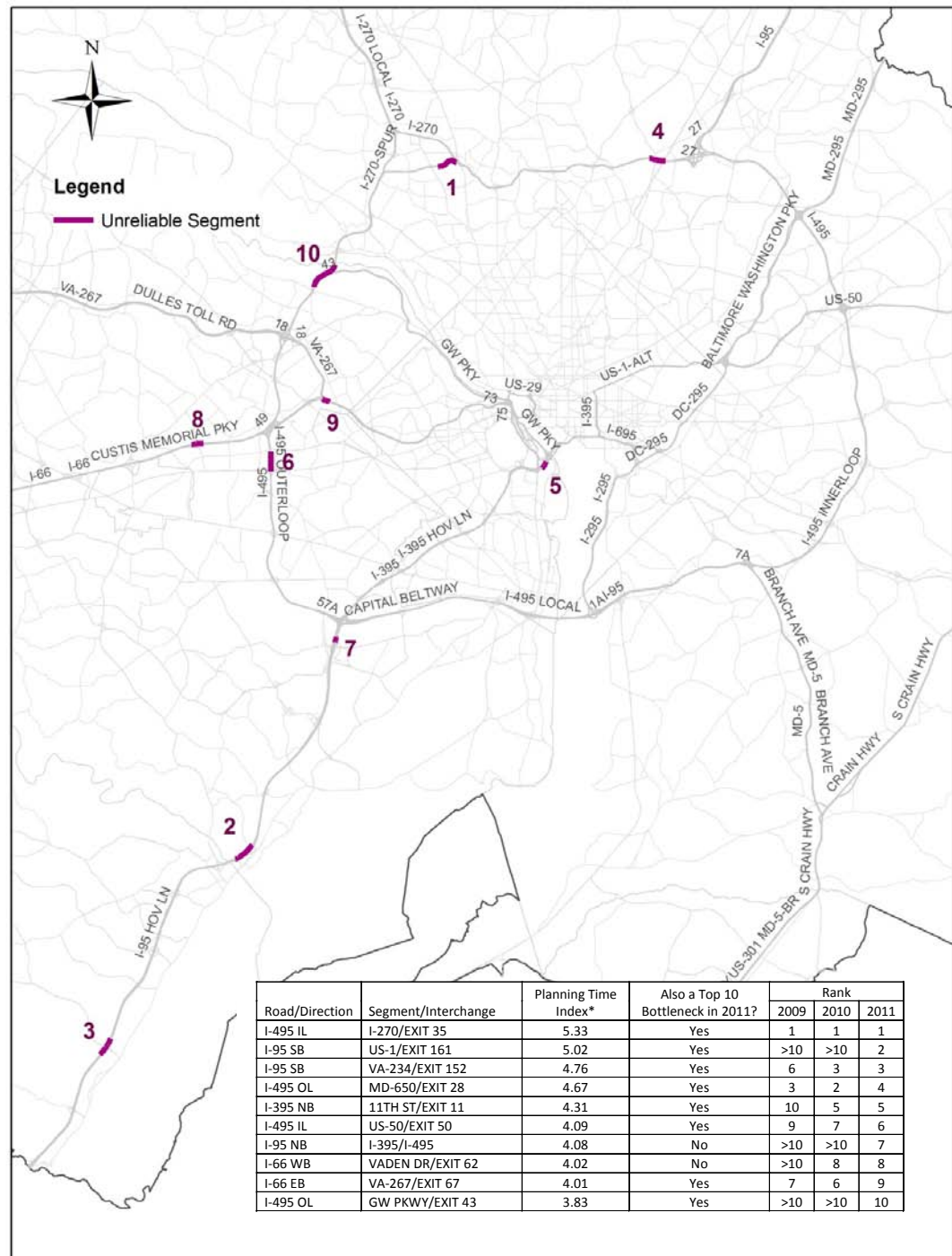
VMT and VHT



Top 10 Bottlenecks in 2011



Top 10 Most Unreliable Segments in 2011



Top congested and unreliable locations 2009-2011

