

DISTRICT DEPARTMENT OF TRANSPORTATION



DC Freight Plan - Status Update

TPB Freight Subcommittee

November 9th | 1pm – 3pm

Agenda and Polling

- Schedule update
- Review identified needs and issues
- Review list of draft recommendations
 - *Live polling!*
- Discussion
- Next Steps

To log in to PolleEv:

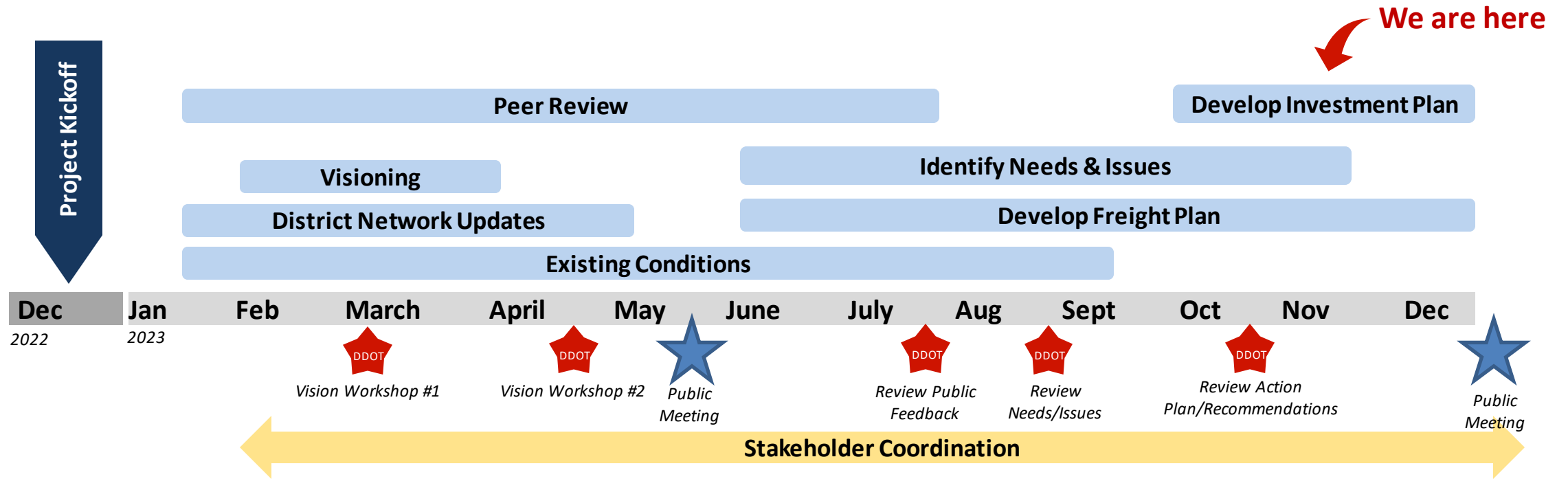
➔ Copy and paste the link from the chat into your browser

OR



➔ Type into your browser:
<https://pollev.com/nicka583>

DC Freight Plan Schedule



District Freight Plan Update – Needs and Issues

Needs & Issues were developed through:

- Existing District Freight Plan
- DDOT Freight Working Group Spring and Summer Meetings
- Freight Industry Workshop
- Public Information Meeting
- Peer Review
- moveDC



Needs & Issues

Sustainability

- Reduce Freight-Related Transportation Emissions
- Alternative Fuel Infrastructure and Fleet Preparedness

Safety

- Vertical Clearance Restrictions
- Geometric Design Limitations
- Increase in truck-involved crashes

Management & Operations

- Protect Infrastructure
- Pavement Conditions
- Maintain freight related infrastructure in a state of good repair and prepare for future technology

Mobility

- Competing Curbside Demands
- Truck Routes and Restrictions
- Truck and Loading Zone Enforcement
- Congestion & Constrained Long-Term Parking
- Unique Mobility Disruptions
- Network redundancy with limited freight mobility modes

Security

- Secure the movement of goods
- Improve delivery safety

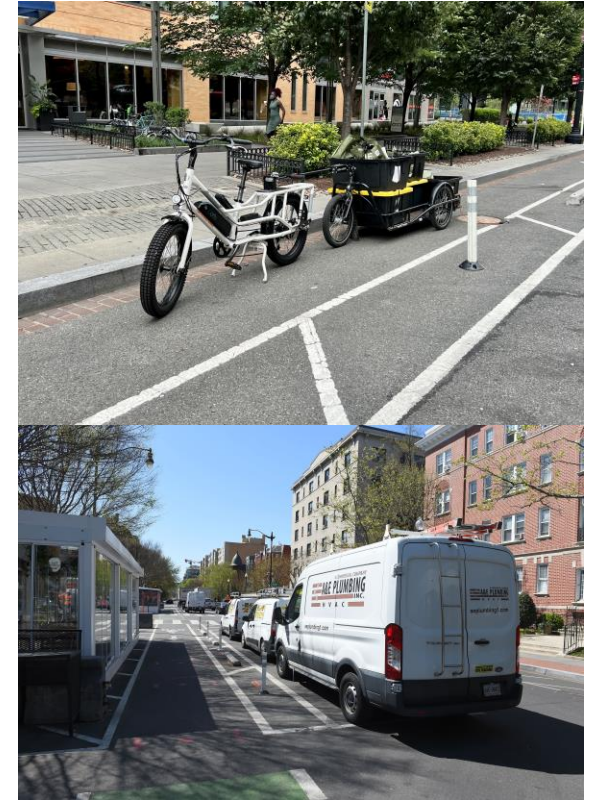
Equity

- Incorporate moveDC equity lens and apply to a freight context and projects

District Freight Plan Update – Recommendations

Recommendations Overview

- **38** draft recommendations
- Range from research and studies to pilot programs to infrastructure investments
- Organized by goal area, but are not exclusive to that goal area (many recommendations overlap goal areas)
- Developed through continued stakeholder engagement and peer review/best practices to address needs & issues
- Recommendations will be adopted by the agency and advanced through in-house workflows and/or as a part of the District Freight Plan prioritized project list



The ask for today:

- *For each goal area consider,*
 - *Are there key recommendations missing?*
 - *Implementation challenges? Concerns about feasibility?*
- *Overall,*
 - *Are there any needs, issues, and/or recommendations missing?*
 - *Should any be higher-priority?*

Recommendations: Sustainability

Needs & Issues

- Reduce Freight-Related Transportation Emissions
- Alternative Fuel Infrastructure and Fleet Preparedness

Live polling here!



Recommendations

- 1 Innovative Freight Delivery Practices – Research, Analysis, and Pilot Programs
- 2 Update data and metrics to provide a baseline and insights on the impacts of strategies
- 3 Coordinate with the District National Electric Vehicle Infrastructure (NEVI) Plan
- 4 Coordinate with existing DDOT AV pilot and Working Group
- 5 Research and identify grants and funding resources to support future research, technology, and pilot programs

Sustainability Recommendations (Rank with highest priority at top)

Innovative Freight Delivery Practices – Research, Analysis, and Pilot Programs



Update data and metrics to provide a baseline and insights on the impacts of strategies



Coordinate with the District National Electric Vehicle Infrastructure (NEVI) Plan



Coordinate with existing DDOT AV pilot and Working Group



Research and identify grants and funding resources to support future research, technology, and pilot programs



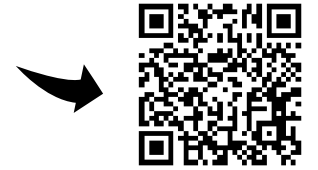
Start the presentation to see live content. For screen share software, share the entire screen. Get help at pollev.com/app

Recommendations: Mobility

Needs & Issues

- Competing Curbside Demands
- Truck Routes and Restrictions
- Truck and Loading Zone Enforcement
- Congestion & Constrained Long –Term Parking
- Unique Mobility Disruptions
- Network redundancy with limited freight mobility modes

Live polling here!



Recommendations

- 6 Explore new strategies and technologies to improve curbside loading operations
- 7 Optimize off-street loading operations
- 8 Explore delivery demand management strategies
- 9 Focus additional resources on inter-jurisdictional cooperation in rail planning to preserve and enhance rail
- 10 Maintain and enhance oversize/overweight routing tool
- 11 Implement positive truck route signage study findings
- 12 Consider multimodal options, such as rail and water, for redundancy and resiliency
- 13 Coordinate with PSD (Planning & Sustainability Division) and TDD (Transit Delivery Division) to maintain goods movement and mitigate truck conflicts in future projects
- 14 Explore the integration of the OSOW routing tool into the construction permitting process
- 15 Research best practices for communicating transportation updates to the industry and drivers

Mobility Recommendations (Rank with highest priority at the top)

Explore new strategies and technologies to improve curbside loading operations



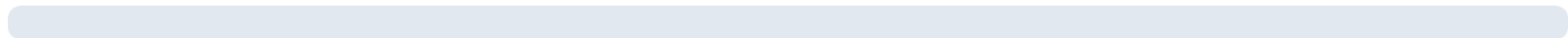
Optimize off-street loading operations



Explore delivery demand management strategies



Focus additional resources on inter-jurisdictional cooperation in rail planning to preserve and enhance rail throughout the District of Columbia



Maintain and enhance oversize/overweight tool



Implement positive truck route signage study findings



SEE MORE 

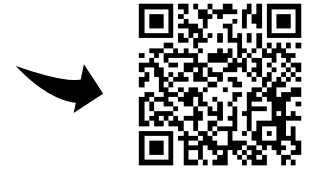
Start the presentation to see live content. For screen share software, share the entire screen. Get help at pollev.com/app

Recommendations: Safety

Needs & Issues

- Vertical Clearance Restrictions
- Geometric Design Limitations
- Increase in Truck-Involved crashes

Live polling here!



Recommendations

- 16 Update freight design guidelines
- 17 Coordinate with DDOT's Asset Management Team to track and address infrastructure related crashes
- 18 Coordinate with MPD, FMCSA, NHTSA, MPD, Vision Zero, District Highway Safety Office and Industry Stakeholders to truck-related crash data quality and support road safety
- 19 Understand constraints and opportunities for limiting truck size in urban areas

Safety Recommendations (Rank with highest priority at the top)

Update freight design guidelines

Coordinate with DDOT's Asset Management Team to track and address infrastructure related crashes

Coordinate with MPD, FMCSA, NHTSA, MPD, Vision Zero, District Highway Safety Office and Industry Stakeholders to truck-related crash data quality and support road safety

Understand constraints and opportunities for limiting truck size in urban areas

Start the presentation to see live content. For screen share software, share the entire screen. Get help at pollev.com/app

Recommendations: Security

Needs & Issues

- Secure the movement of goods
- Improve delivery safety

Live polling here!



Recommendations

- 20** Provide publicly available comprehensive and up to date truck route information
- 21** Partner with MPD to develop safety strategies to increase safety of freight movement
- 22** Stakeholder survey about how to better support freight delivery safety
- 23** Maintain coordination with public safety partners HSEMA and MPD

Security Recommendations (Rank with highest priority at the top)

Provide publicly available comprehensive and up to date truck route information

Partner with MPD to develop safety strategies to increase safety of freight movement

Stakeholder survey about how to better support freight delivery safety

Maintain coordination with public safety partners HSEMA and MPD

Start the presentation to see live content. For screen share software, share the entire screen. Get help at pollev.com/app

Recommendations: Management & Operations

Needs & Issues

- Protect Infrastructure
- Pavement Conditions
- Maintain freight related infrastructure in a state of good repair and prepare for future technology

Live polling here!



Recommendations

24 Future Scenario Planning

25 Maintain a freight advisory committee

26 Support weigh-in-motion (WIM) systems

27 State Freight Plan Update

28 Highway sign design & installation

29 Paving Restoration - NHPP Streets

30 Study best practices to coordinate with Department of Public Works and the Department of Licensing and Consumer Protection

31 Expand on existing study and inform efforts for encouraging micohub/sustainably delivery

32 Invest in truck enforcement equipment

33 Maintain & Improve DC Port

34 Support state of good repair and infrastructure projects along the National Highway Freight Network

Management & Operations (Rank with highest priority at the top)

Future Scenario Planning



Maintain a freight advisory committee



Support weigh-in-motion (WIM) systems



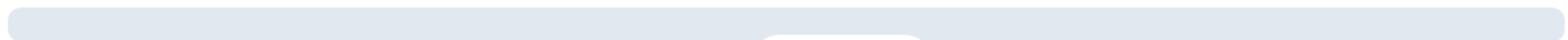
Highway sign design & installation



Paving Restoration - NHPP Streets



Study best practices to coordinate with Department of Public Works and the Department of Licensing and Consumer Protection



SEE MORE 

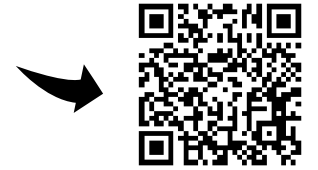
Start the presentation to see live content. For screen share software, share the entire screen. Get help at pollev.com/app

Recommendations: Equity

Needs & Issues

- Incorporate moveDC equity lens and apply to a freight context and projects

Live polling here!



Recommendations

- 32** Examine methods to meaningfully engage with communities for freight-related discussions
- 33** Focus safety education efforts in areas with high incidences of truck-involved crashes, or in priority equity areas
- 34** Research how to engage partners to facilitate discussions and solutions for industry challenges (e.g., workforce)
- 35** Continue to incorporate moveDC equity lens, and apply to a freight context and projects

Equity Recommendations (Rank with highest priority at the top)

Examine methods to meaningfully engage with communities for freight-related discussions

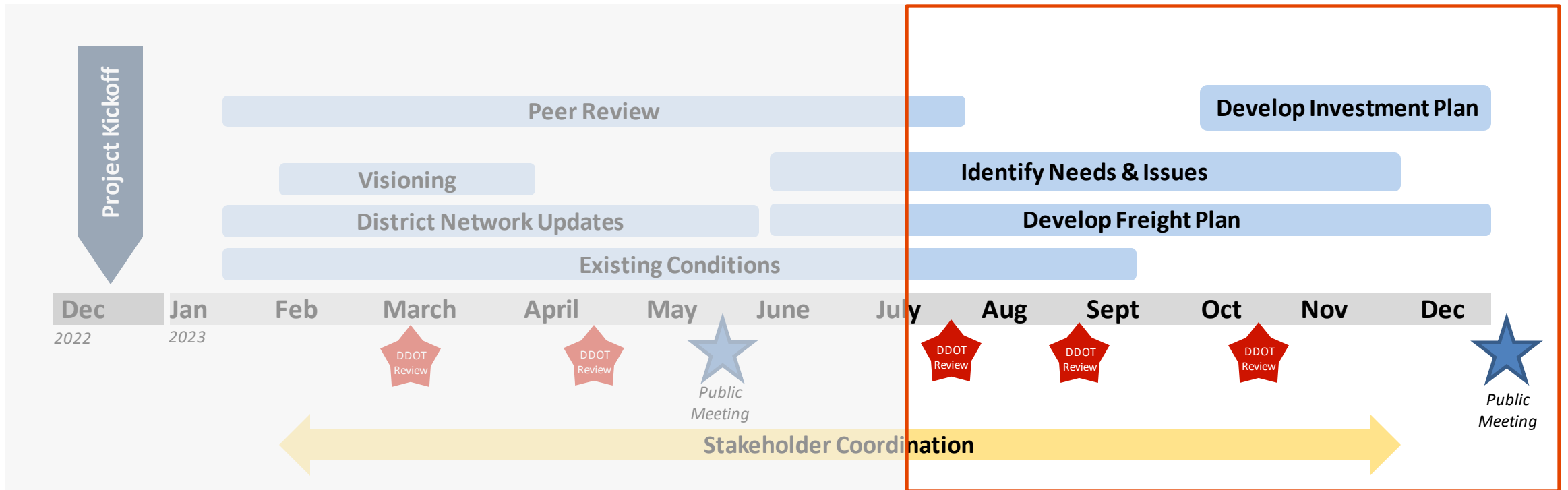
Focus safety education efforts in areas with high incidences of truck-involved crashes, or in priority equity areas

Research how to engage partners to facilitate discussions and solutions for industry challenges (e.g., workforce)

Continue to incorporate moveDC equity lens, and apply to a freight context and projects

Start the presentation to see live content. For screen share software, share the entire screen. Get help at pollev.com/app

Next Steps for Overall Freight Plan



- Present recommendations to District agencies
- Refine recommendations and develop implementation and investment plan
- Develop DC Freight Plan Document
- Present updated plan to the public in Winter 2024



District Department of Transportation

250 M St SE | Washington, DC 20003 | 202.673.6813