



Washington Metropolitan Area Transit Authority

Transportation Planning Board Update

Metropolitan Washington Council of Governments

April 15, 2015



Early Safety Actions Update

- Develop enhanced training schedule
- Train operator protocol for air intake system
- Rail Control Center incident personnel
- Analysis of lower speeds to reduce electric current → ACTION ORDERED
To limit max speed to 45 mph
- Exterior signage for emergency responders → INSTALLATION STARTED
Completion scheduled June 2015



Early Safety Actions Update

- Report on third-rail cables condition
 - Evaluate early action on low-smoke cable
 - New protections for third-rail cables
-
- Identified critical locations and completed
 - Schedule on completion for remaining locations
-
- Review ground fault detectors (settings on third rail circuit breakers)
- Investigate use of zoned and/or wireless smoke detectors
-
- Further refining project cost and integration of work with other projects



NTSB Recommendations



R-15-8 Assess your subway tunnel ventilation system to verify the state of good repair and compliance with industry best practices and standards

- ✓ Anomalies identified – 13 locations
- ✓ Closed – 8 locations
- ✓ Remain – Submission on scheduled for May 30th, 2015



R-15-9 Develop and implement detailed written tunnel ventilation procedures for operations control center staff

- ✓ Early actions completed
- ✓ Scope of work from third-party consultant is being progressed





NTSB Recommendations



R-15-10 Incorporate the use of the (new) procedures into your ongoing training and exercise programs and ensure ample opportunities to learn and practice activating ventilation fans

- ✓ Early actions executed
- ✓ Scope of work from third-party consultant is being progressed





Overview of PSRS and CRCS Systems

UNDERGROUND ARCHITECTURE

Head-End
Equipment

PRCS 700-800 MHZ



WMATA

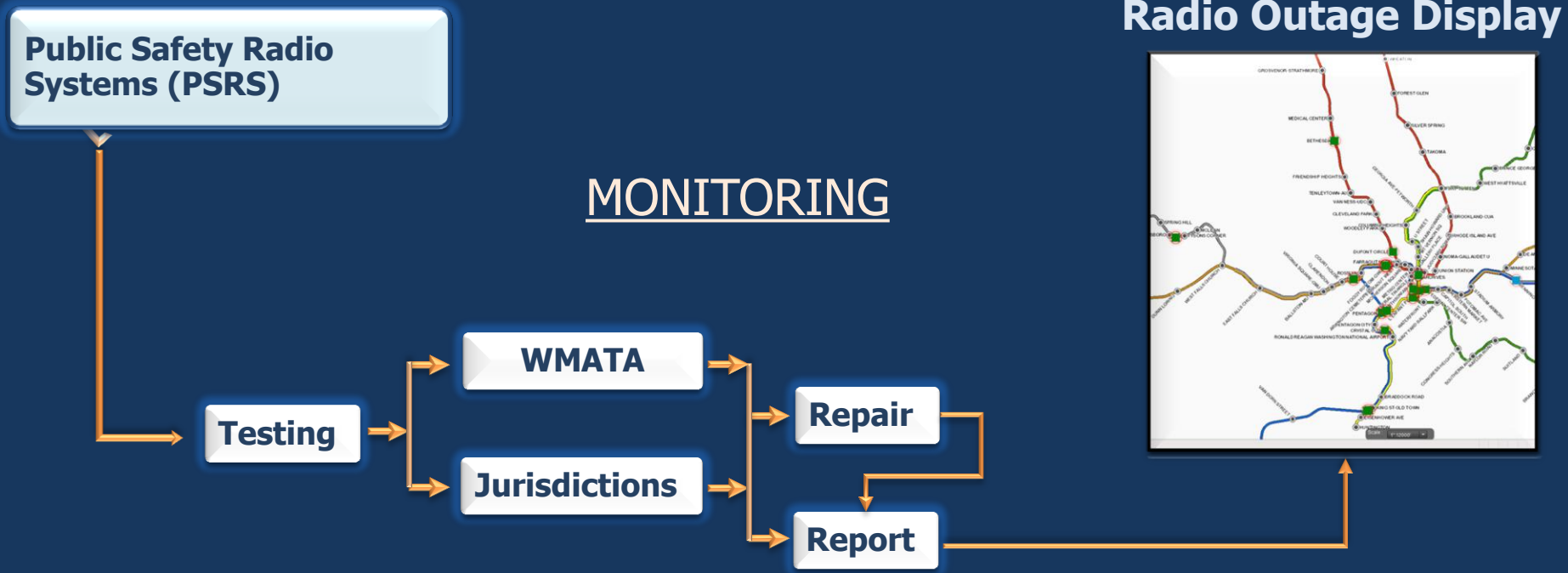
CRCS - 490 MHZ

WMATA



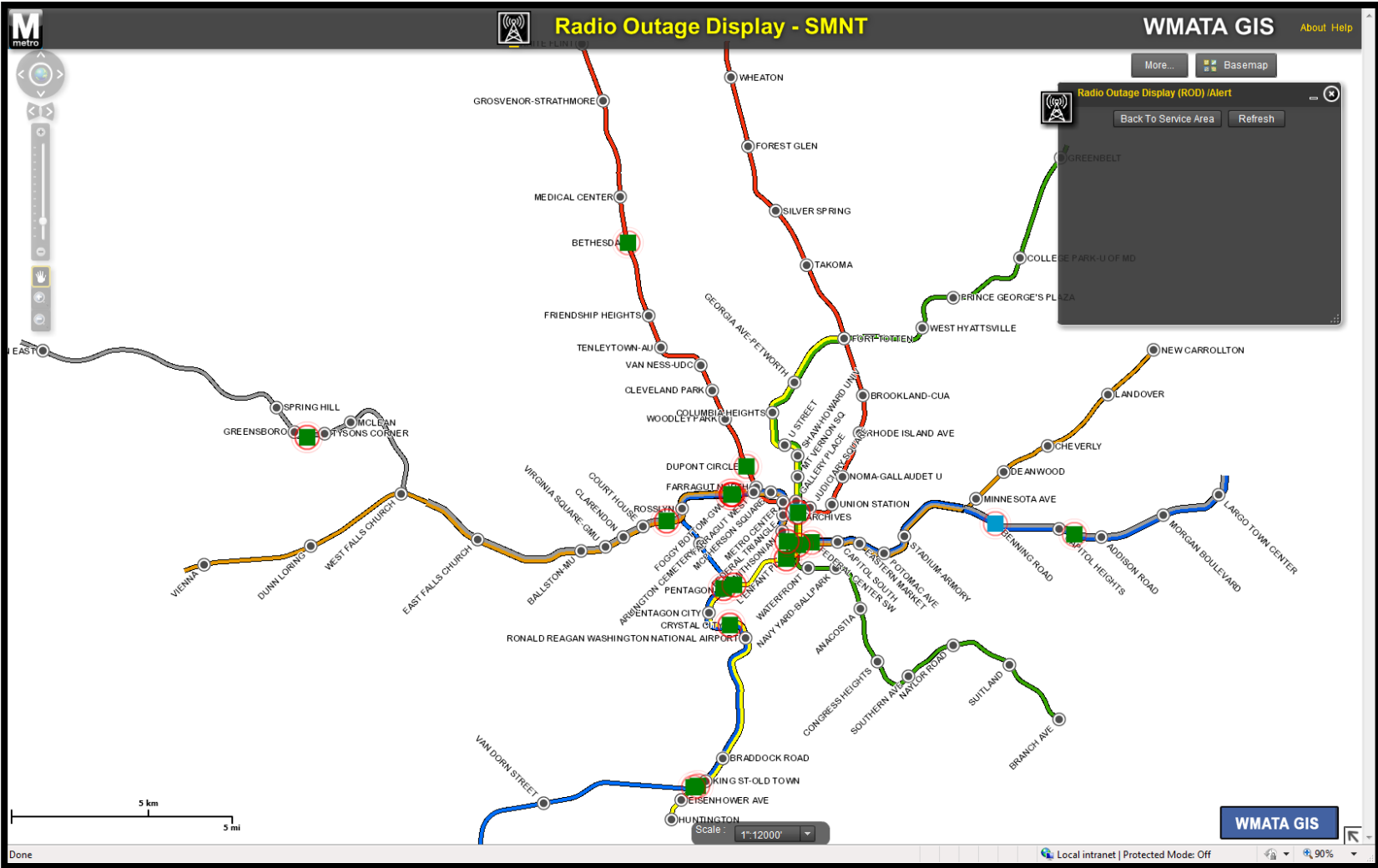


Mitigation and Reporting



- Testing: WMATA forces – Every Line/Station once a week
- Reporting: Radio Outage Display (ROD)

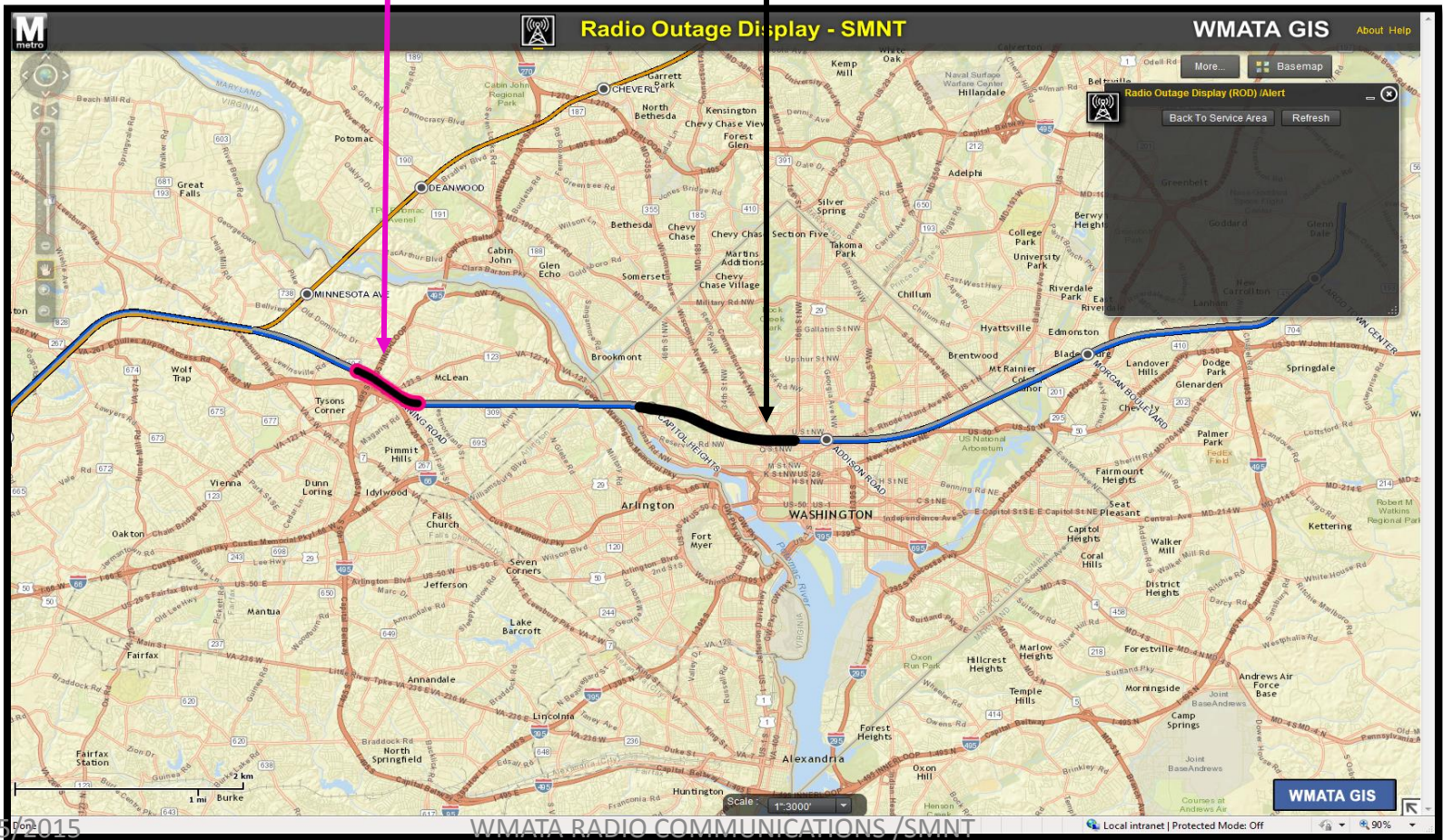
WHAT IS THE WMATA RADIO OUTAGE DISPLAY (ROD) MAP?



THE AREA OF THE RADIO OUTAGE CAN NOW BE VIEWED

PSRS IN BLACK & PINK

CRCS IN BLACK





T-Band

- Ultra high frequency (UHF) used by public-safety agencies in 13 metropolitan areas that must be vacated within a decade, as mandated by the federal legislation
- Metro moving from 490 MHz to 700-800 MHz frequency range
- Creates common infrastructure for CRCS and PSRS





Wireless Network (Neutral Host) Implementation

- T-Band project installs infrastructure to allow deployment of radiax cable
- Metro and the carrier team have recently started negotiations for sharing of the work effort
- Metro will develop a comprehensive schedule for implementing wireless access throughout the system