

# Arlington County Police Department

## Pedestrian and Bicycle Safety

**Chief M. Douglas Scott**

**Presenter: Lieutenant Patrick Donahue  
Special Operations Section**

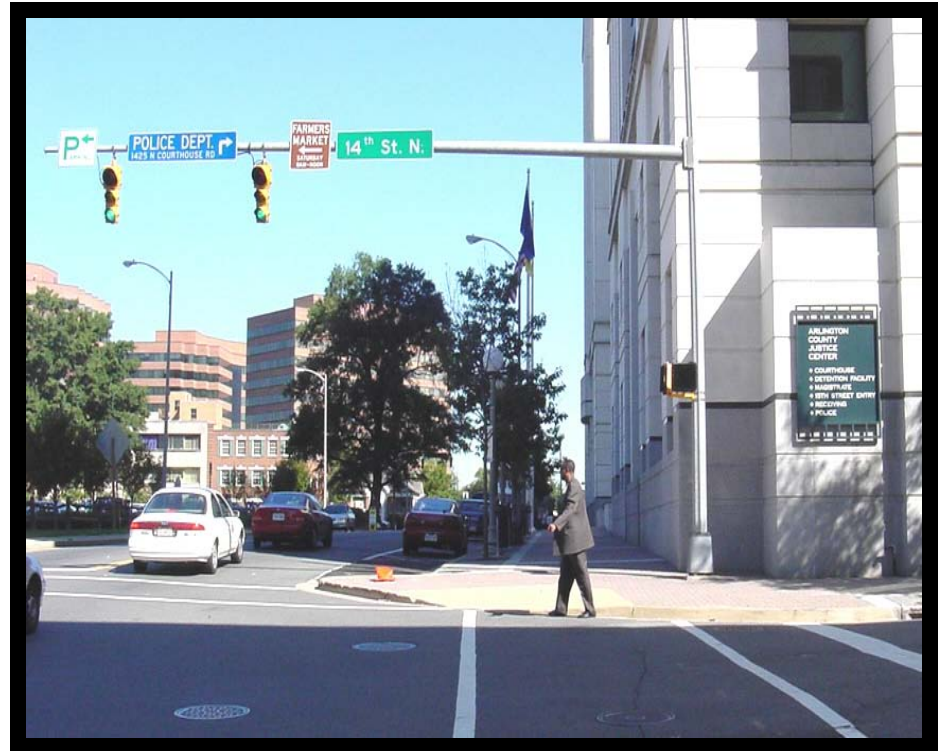
**October 2011**

# Arlington County

- Arlington County encompasses 28.5 square miles.
- Population as of July 2010 was over 213,000.
- Density of over 7,400 people per square mile.
- 11 Metro stations on the Blue and Orange line.
- 113 miles of bike lanes, trails, and routes.
- 5 bridges connecting Arlington with DC.

# Arlington Police Resources

- First District
- **Second District**
- **Third District**
- **6 Patrol Squads**
- **Special Operations Section**



# Pedestrian and Bicycle Accidents

	<u>2009</u>	<u>2010</u>	<u>2011 (YTD)</u>
Total Pedestrian Involved Accidents	103	100	79
Total Pedestrian Injuries	104	99	77
Total Pedestrian Fatalities	4	1	2
Total Bicycle Involved Accidents	66	54	61
Total Bicycle Injury Accidents	62	47	51
Total Bicycle Fatal Accidents	1	0	1

# Efforts Toward Safer Pedestrian Travel

- Awareness
- Engineering
- Enforcement



# Awareness

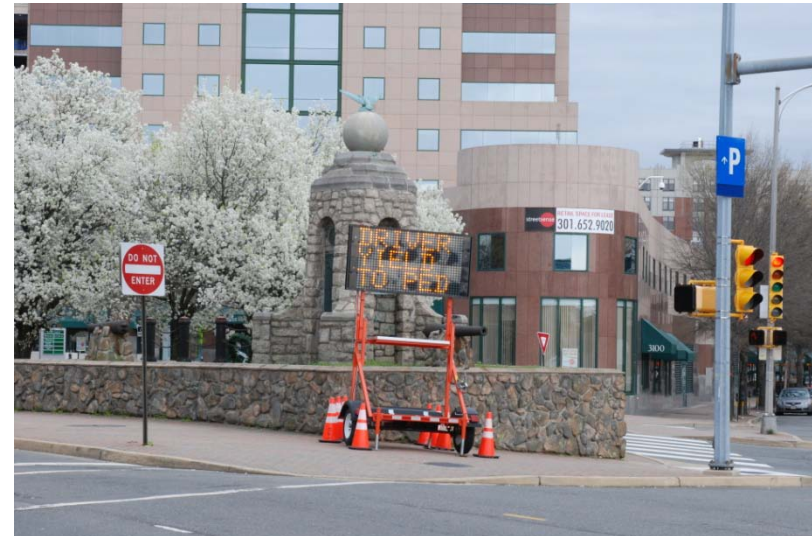
- **Media releases**
- **Pedestrian safety flyers**



- **Public Service Aides/  
Auxiliary Police**

# Awareness

- **Citizen / Teen Police Academies**
- **Variable message boards**



- **Civic Association Meetings**

# Awareness

- Portable speed trailers



- Permanent speed display units



# Awareness

## ➤ Photo red light program



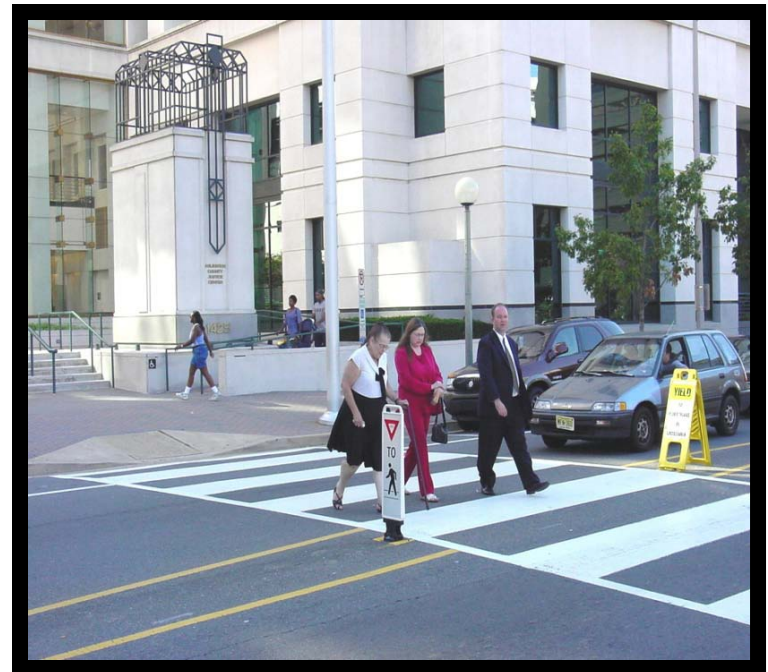
# Engineering



- Collaborative effort
- **Multiple county agencies**
- **Exchanging of ideas**

# Engineering

## ➤ Enhanced Crosswalk Locations



# Engineering



➤ Neighborhood calming measures

# Enforcement

## ➤ Traffic Enforcement



- Failure to yield to pedestrians/ bicycles
- Red light violations
- Speeding violations
- Improper turning
- Highway sign violations

# Enforcement

## ➤ Participation in regional enforcement programs



- Click it or Ticket
- DMV grant funded enforcement
- Street Smart Pedestrian and Bicycle Safety

- Drive Smart Virginia



# Enforcement Results

Results of the 2011 Back to School Campaign coupled with the Bicycle and Pedestrian Awareness Week (Sept. 6<sup>th</sup> – Sept. 16<sup>th</sup>) :

Patrol Squads	District Teams	Special Operations Section	Overtime Officers	Total Citations
1,072	136	407	196	<b>1,811</b>

# “Hands On” Enforcement

- **High volume intersections**
- **Manual direction of traffic, pedestrians and bicycles**
- **Heavy traffic congestion at peak rush hour times**
- **Not a ticket producer but generally well received**





# Our Goal for Pedestrian Safety

- Arlington County remains committed to providing a safe and walkable environment for pedestrians and bicycles.
- The goal of the Arlington County Police Department is to reduce the number of crashes between vehicles, pedestrians, and bicycles so that all may share the road safely.

# Some successes....

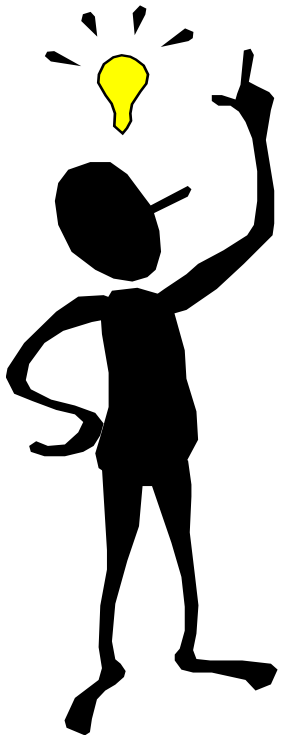
- In 2005, the American Podiatric Medical Association named Arlington #1 on its list of Top 10 Best U.S. Walking Cities.



- More recently, Arlington County was designated a Walk Friendly Community by the Pedestrian and Bicycle Information Center ([www.walkfriendly.org](http://www.walkfriendly.org))

....but more work needs to be done!

# Arlington County Police Department



Questions ??