



Executive Committee Report Circuit Rider Program



We have seen how a circuit rider operating at a local watershed level can be a catalyst for successful watershed projects that protect the Bay.

We are confident that with funding from the Chesapeake Bay Program and individual states, an expanded circuit rider program to provide much needed technical assistance and coordination among all groups of stakeholders, especially local governments, will produce impressive and long waited results to clean up the Bay.

Committee's Role



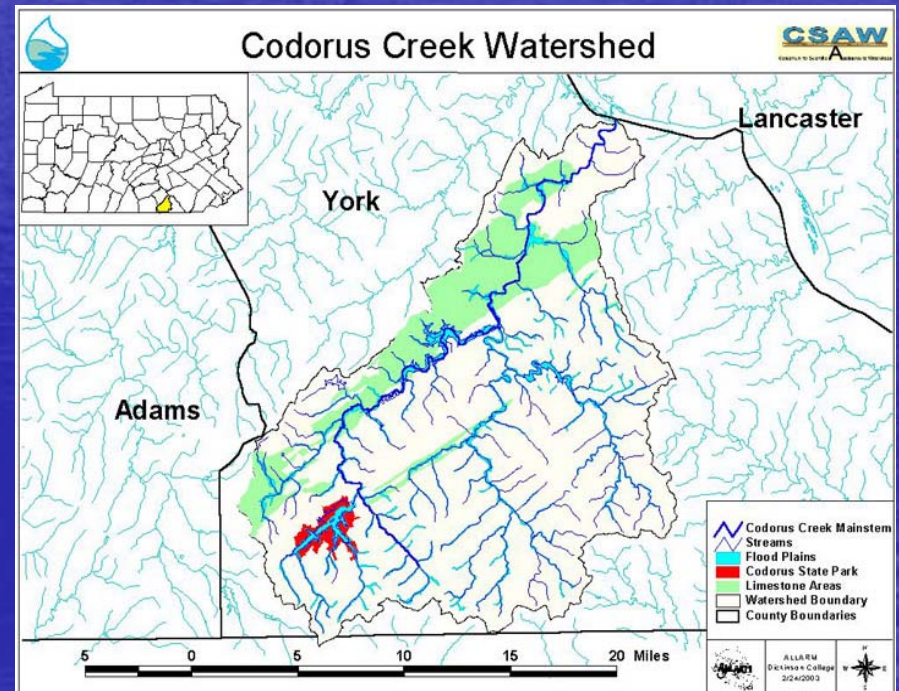
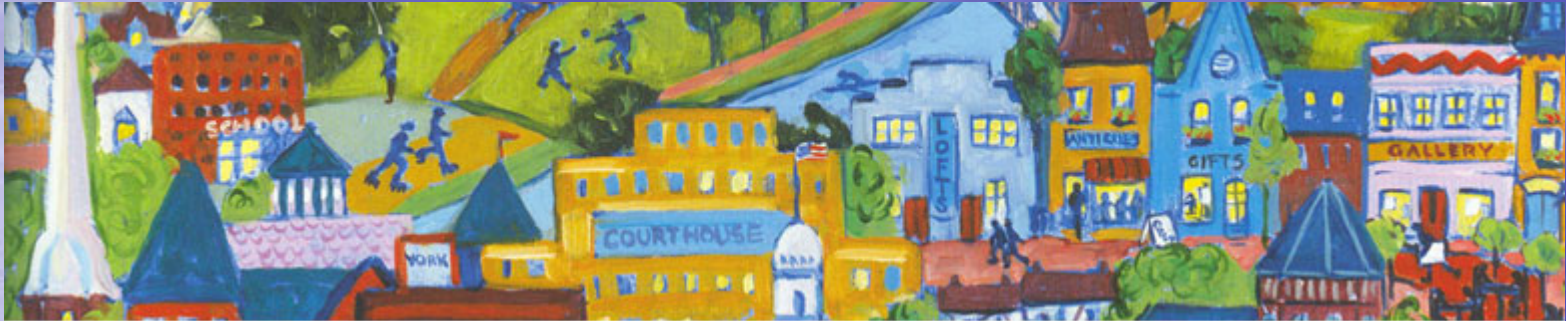
Environmental Tour of the Anacostia for
Elected Officials

Our Challenge



Local governments are unsure of what they can do, what needs to be done, how to get started.....

Solution: Circuit Riders



Solutions



Provide technical assistance, grant writing support, proposal preparation, grant administration, funding identification.....

Circuit Rider Accomplishments



Before



After

Circuit Rider Accomplishments



Before

Circuit Rider Accomplishments



During

Circuit Rider Accomplishments



After

Circuit Rider Accomplishments



Rock deflector on Willis Run installed by inner-city high school students



Tracked excavator with hydraulic thumb restoring a stream.

Circuit Rider Accomplishments



- Rock & Log cross vane technique used to prevent erosion.

- “Incubator” project on a tributary. The old refrigerators are the incubators filled with brown trout eggs for germination. It’s an attempt to restart wild brown reproduction.

Anacostia River



Executive Council's Opportunity



We have seen how a circuit rider operating at a local watershed level can be a catalyst for successful watershed projects that protect the Bay.

We are confident that with funding from the Chesapeake Bay Program and individual states, an expanded circuit rider program to provide much needed technical assistance and coordination among all groups of stakeholders, especially local governments, will produce impressive and long waited results to clean up the Bay.