

CONTACT TRACING

Importance, Status, & Regional Efforts

Denise C. Sockwell, MSPH, CP-FS
Northern Virginia Epidemiologist
Virginia Department of Health

COG Board of Directors
September 9, 2020



Key Definitions

Close Contact - any individual within 6 feet of an infected person for at least 15 minutes

Incubation period – the period of time between exposure to an infection and the onset of symptoms (COVID-19: 2-14 days)

Infectious period – the period where an infected person can spread the disease (COVID-19: 2 days prior symptom onset until at least 10 days after symptom onset. *If person was asymptomatic, test date is used*)

Isolation – separation of the infected person from others while capable of spreading disease (infectious) (COVID-19: 24 hours without fever or fever reducing medications, improvement of symptoms and at least 10 days since the onset of symptoms. For someone who was asymptomatic – 10 days from the test date).

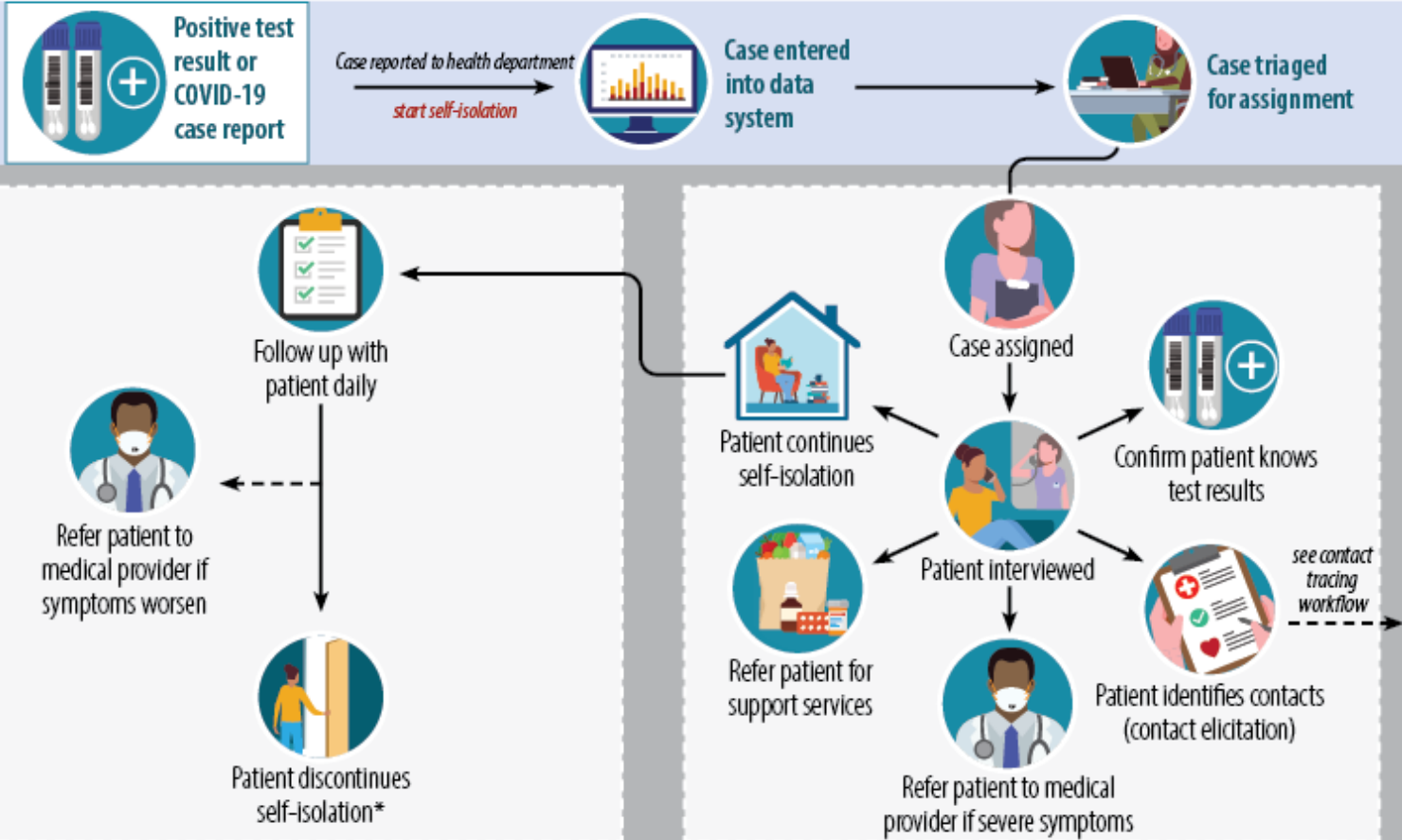
Quarantine - keeping someone who has been exposed to the virus away from others for the duration of the incubation period (COVID-19: 14 days after the last exposure).

Source Control – use of cloth face coverings to cover a person’s nose and mouth to prevent the release of respiratory secretions when talking, sneezing, coughing, etc. (COVID-19: recommended for everyone due to the potential of asymptomatic or pre-symptomatic transmission).



CASE INVESTIGATION WORKFLOW (COVID-19)

Accessible version <https://www.cdc.gov/coronavirus/2019-nCoV/beta/contact-tracing/contact-tracing-plan/investigating-covid-19-cases.html>



* The decision to end self-isolation should be made in context of local circumstances. Strategies based on symptoms, time, and test results can result in different time frames.



cdc.gov/COVID19

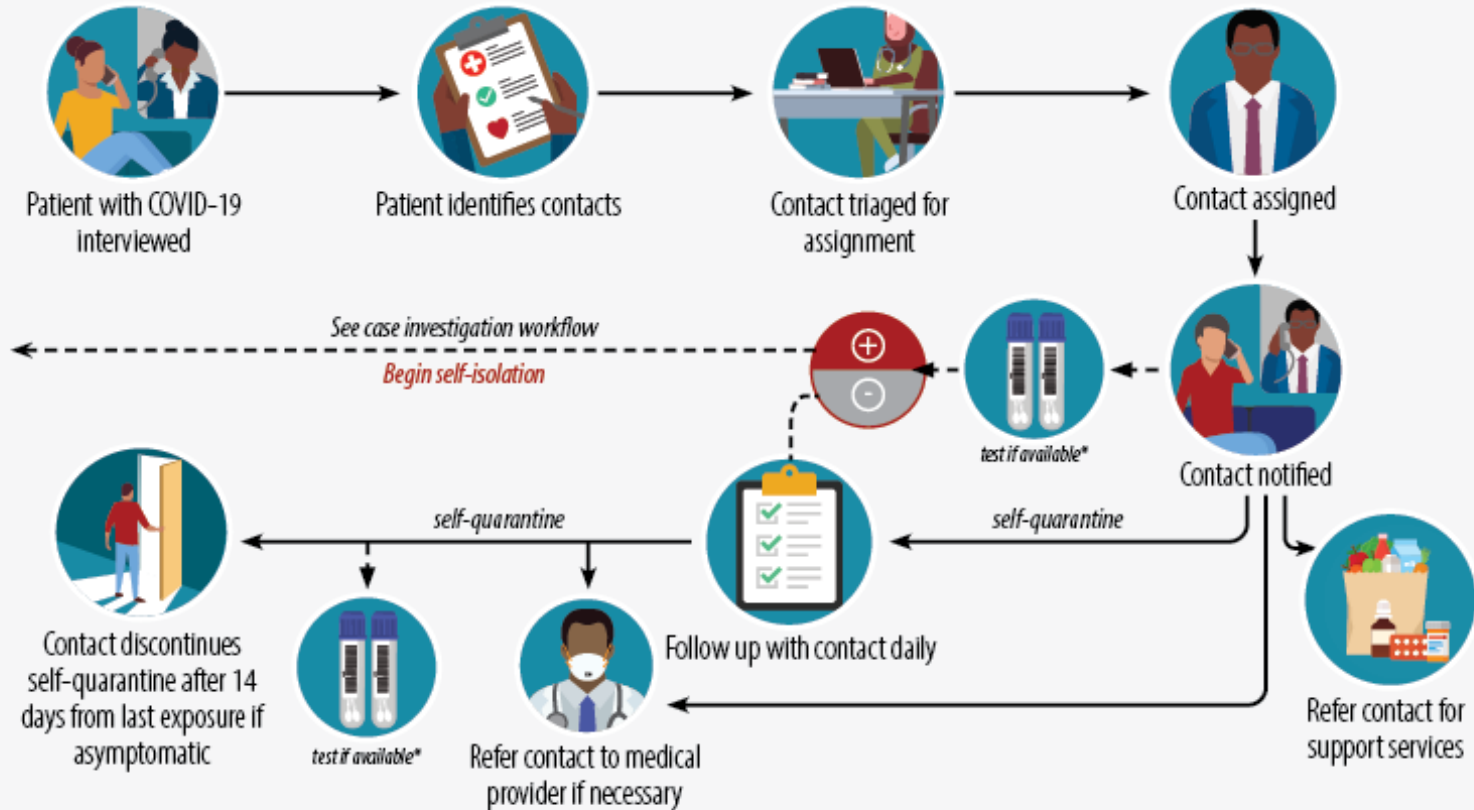
CS17004-4 06/15/2020



Metropolitan Washington
Council of Governments

CONTACT TRACING WORKFLOW (COVID-19)

Acron@kentia | <https://www.wa.gov/covid19/2020-05-04/contact-tracing-workflow>



*if contact tests positive or develops COVID-19 symptoms, case investigation is necessary.



cdc.gov/COVID19

CS17004 06/15/2020



Metropolitan Washington
Council of Governments