

Micro-Mobility Permit Program



Metropolitan Council of Governments

12/9/19

Jim Larsen, Bureau Chief

Arlington County Commuter Services

Approved Operators and Fleet Sizes

Data from 5:11 pm
November 18, 2019

Operator	Current	Max
Bird	199	700
Bolt	7	350
JUMP Scooters	115	350
JUMP Bikes	51	350
Lime	208	350
Lyft	64	350
Razor	116	350
Spin	78	350
Skip	284	350
Total	1122	3500

Operations and Use Comparison

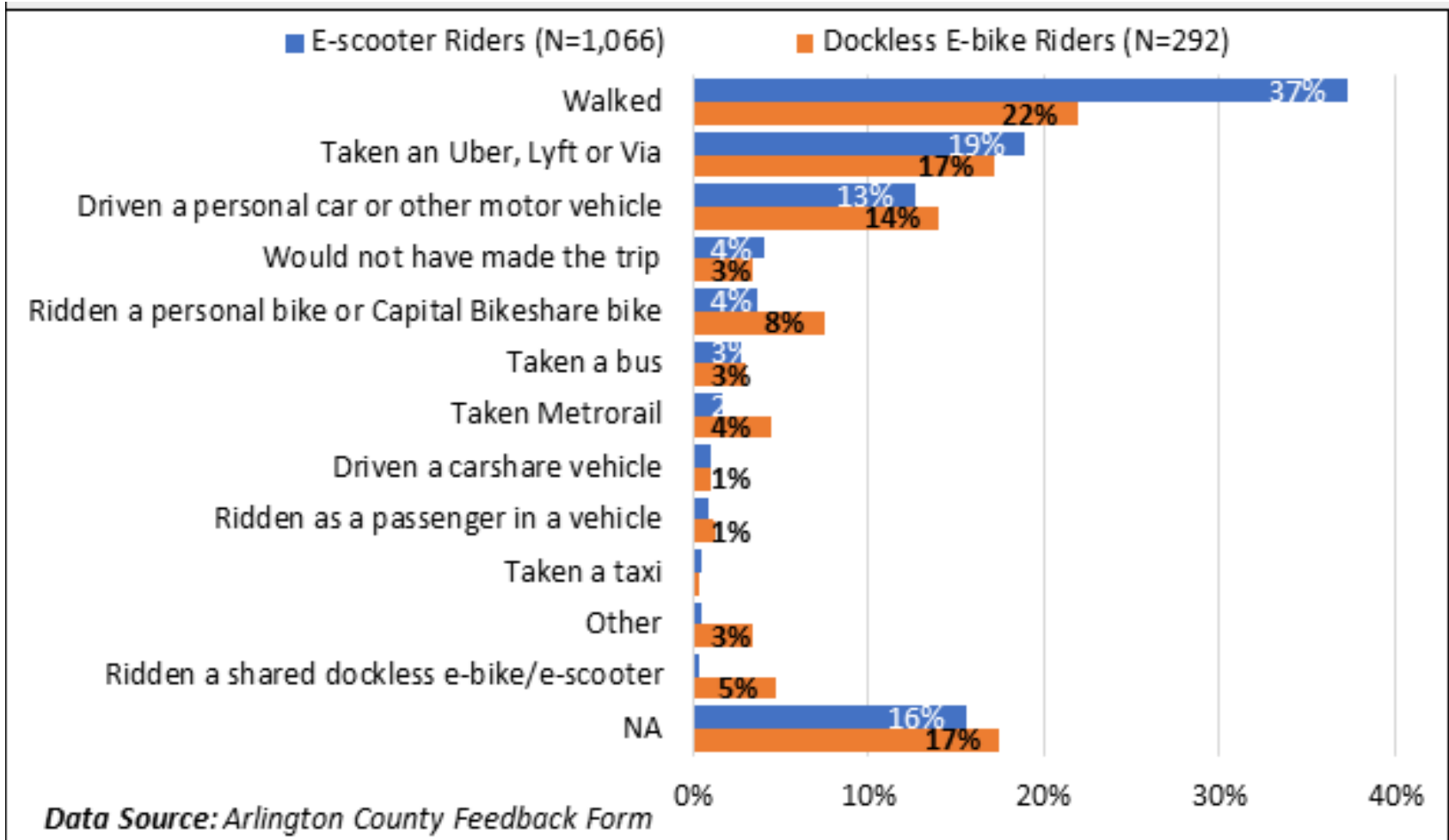
Shared Mobility Devices (SMDs) & Capital Bikeshare

(10/18 – 6/19)

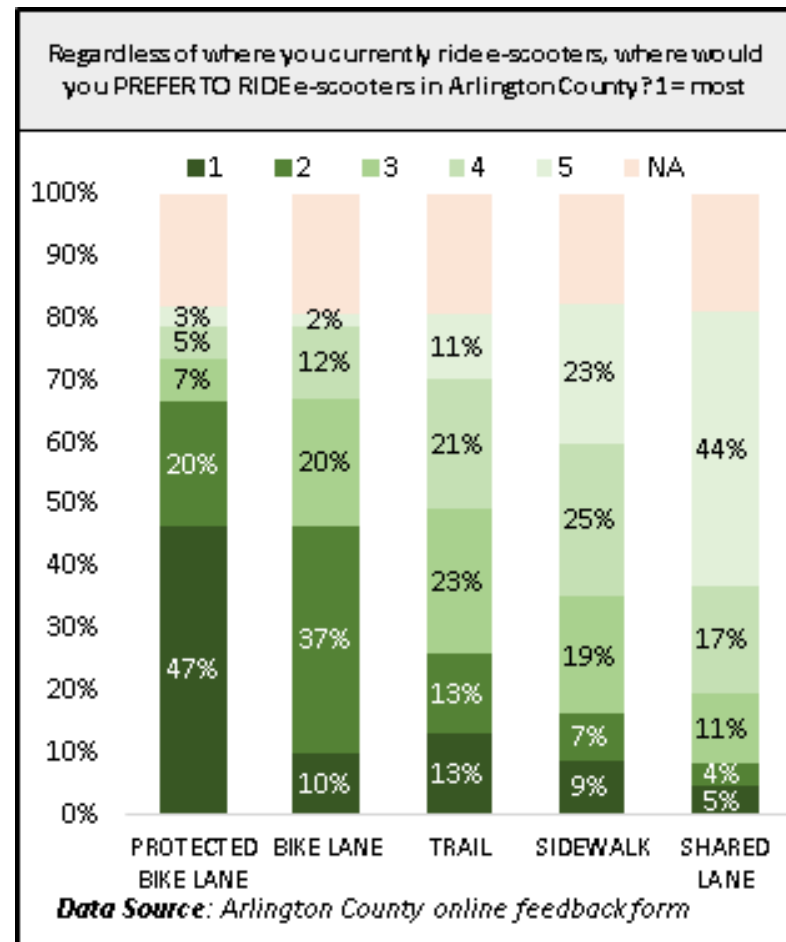
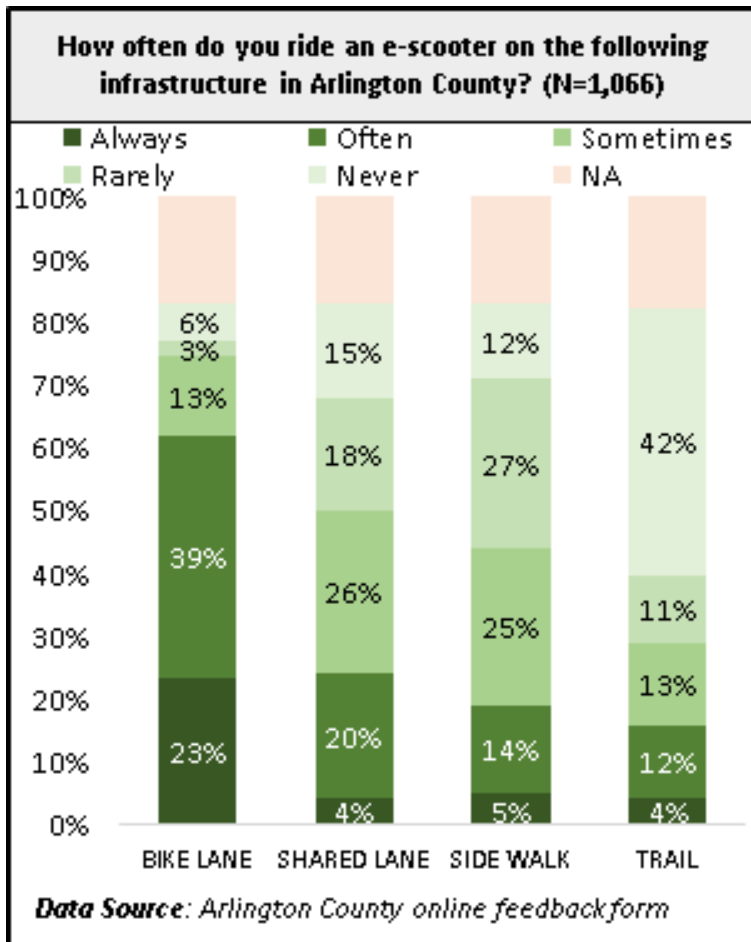
	SMDs	Capital Bikeshare
Total Number of Trips in Arlington	435,690	261,113
Total Number of Miles	409,548	574,470
Average Trip Length (miles)	0.94	2.01
Average Trip Duration (minutes)	14	19
Service level	4.0 / 1,000 persons	3.1 / 1,000 persons

Travel Mode Replacement

SMD Mode Replacement for Most Recent Trip



Facility Use & Preferences



Frequently mentioned concerns:

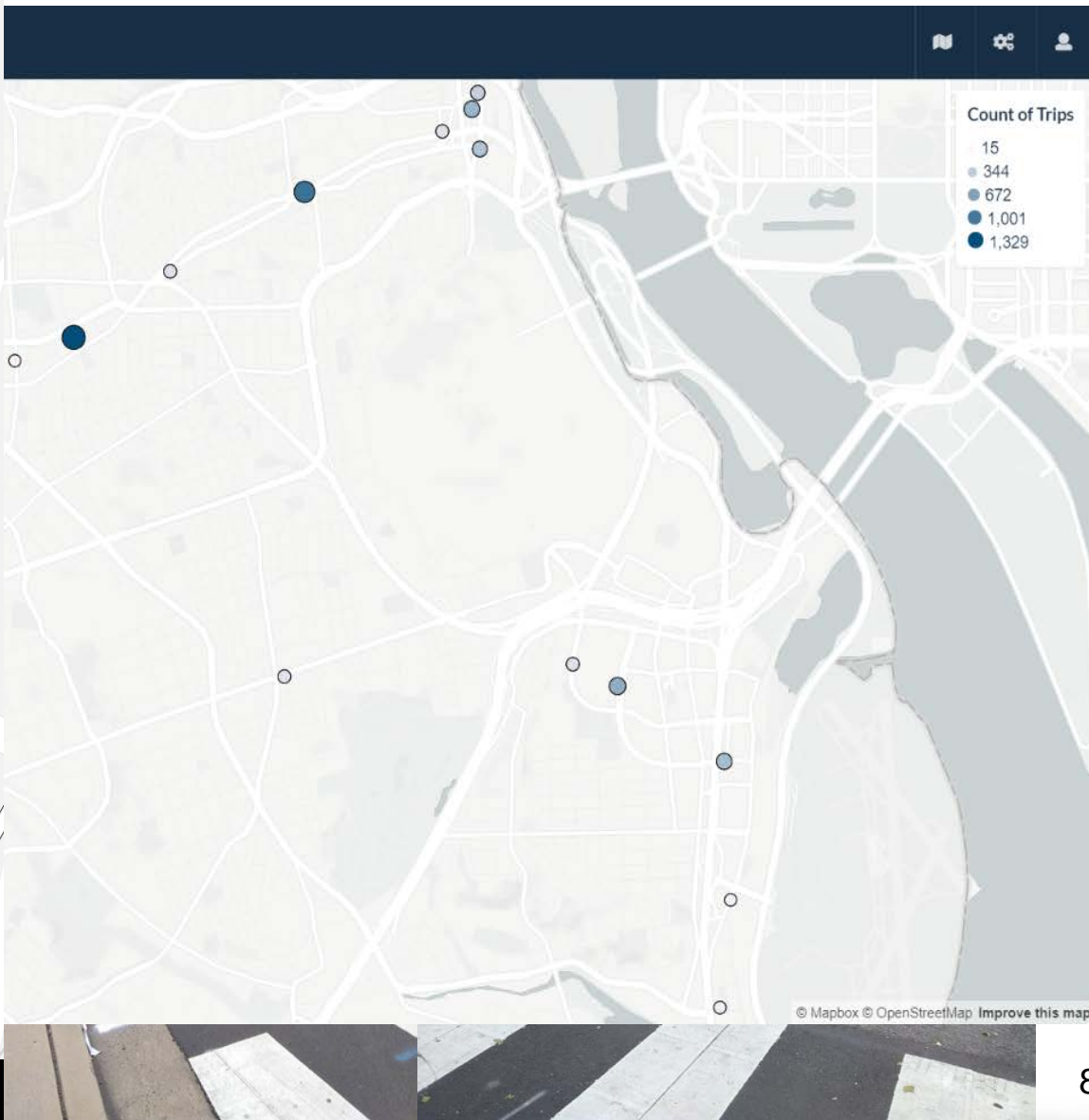
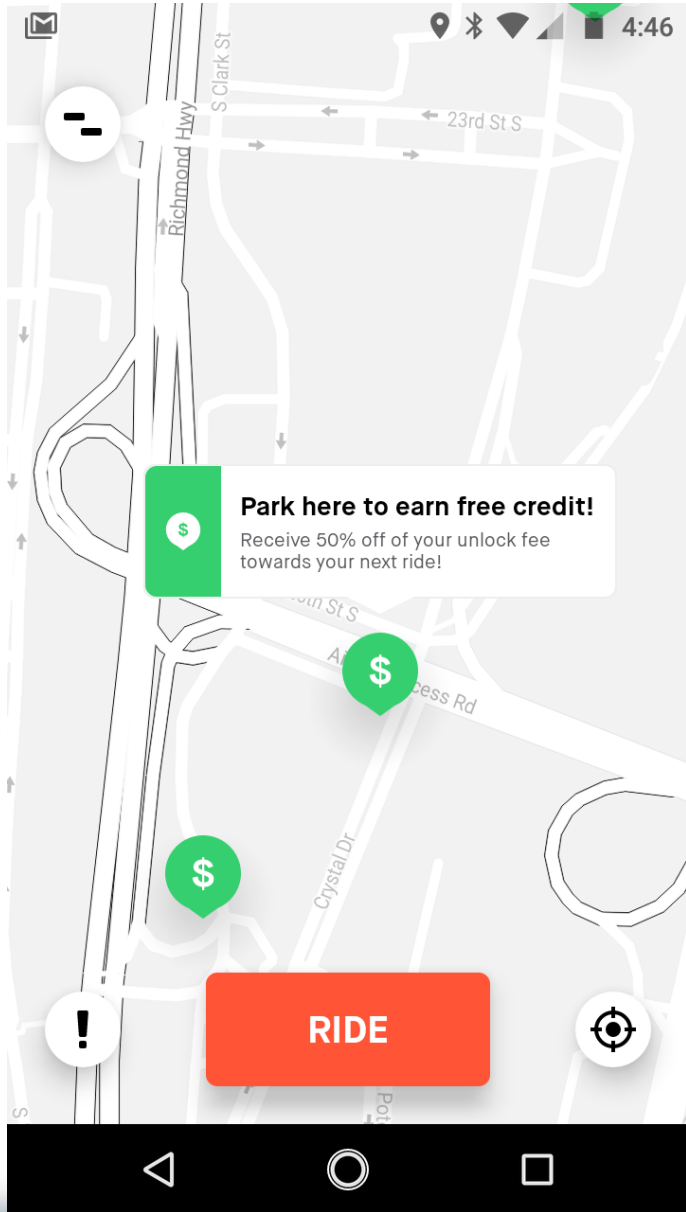
- Sidewalk riding – hazards and discomfort for pedestrians on sidewalks
- Improper parking – vehicles obstructing walking paths and bus stops
- User behavior – not following rules/etiquette and underage riding
- Safety – adequacy of street facilities
- Equity - uneven distribution and access to devices



Pilot Study Conclusions

- Micro-mobility devices are well used and liked by users
- Potential for community benefits (mobility, environmental)
- Key areas where regulation and program refinement could improve performance include:
 - Sidewalk Riding
 - Parking
 - Speeds
 - Communications and Education
 - Equity
- Need for better infrastructure

Parking concerns and corrals



- Changed the existing Arlington County Code Section 14.2: Article II (Bicycles) to include micro-mobility devices
- Created a new Section 14.2: Article X to establish a permit system for managing the “for-hire” companies
 - Shared Micro-Mobility Services For-Hire, Permit Program in Article X

Where Legal to Ride

Bicycle Lanes

- **Today:** Only bicycles and e-bikes allowed
- **New:** Allow e-scooters and motorized skateboards

Sidewalks

- **Today:** Bicycles allowed
- **New:** Allow e-bikes, e-scooters, and motorized skateboards, except where posted. May not use sidewalks where protected bicycle lanes are available.
- **New:** E-scooters limited to 6 mph on the sidewalk using a self-regulatory speedometer (like cars)
- **New:** County Manager may prohibit sidewalk-riding in certain areas. Staff to monitor areas of concern.

Speed limits

- **Today:** Shared e-scooters limited to 10 mph
- **New:** Allow e-scooters to travel at 15 mph on the street and trails but 6 mph on the sidewalk

Trails

- **Today:** Only bicycles are allowed on County trails; micro-mobility devices were recently permitted to use NPS and NOVA Parks trails
- **New:** Allow e-bikes, e-scooters, and motorized skateboards

Parking

Red is removed; **Green** is addition; proposed by Ordinance

- No person shall stand or park a bicycle, **electric power-assisted bicycle, motorized skateboard or motorized scooter** upon the street other than upon the street roadway against the curb. No person shall stand or park a bicycle, **electric power-assisted bicycle, motorized skateboard or motorized scooter** upon the sidewalk other than in a rack to support the **vehicle** ~~bicycle~~, or attached to a street's sign, or light post, ~~or against a building~~, or at the curb, at the back edge of the sidewalk. This will be done in such a manner as to afford the least obstruction to pedestrian and vehicular traffic. **Bicycles, electric power-assisted bicycles, motorized skateboards and motorized scooters shall be parked upright, and shall not be parked where they would obstruct curb ramps, pedestrian access within bus stops, or fire access, or be left on County-owned public spaces other than sidewalks, and unless where specifically designated through signage or provision of racks.**

Permitting Process of For-hire Shared Services

- Companies must apply for a permit prior to beginning operation
- Permit would specify the number of vehicles that company may operate
- Permits would be awarded based upon criteria related to County policies (such as Master Transportation Plan) and other factors the Manager may consider
- Permit could be suspended or revoked due to company failures to adhere to Code requirements or local, state or federal law
- Permit must be renewed annually
- Application fee (\$1,000) would be charged for a new entrant and for any amendments to request permitted fleet expansion
- Per-vehicle annual operation fee (\$80) would be charged to first recover direct staff and material costs (signs, corral markings, educational materials, etc.) for program administration. Potential surplus could support targeted infrastructure improvements.

Article X - “For-Hire” Companies

- Potential cap on total number of vehicles authorized, however modification and use of cap remains at Manager discretion.
- Vehicle equipment (e.g., bells, lights), company service (e.g. customer service, operations center), insurance, and bonding requirements.
- Safety and etiquette education efforts
- More equitable distribution (minimum 15% deployed outside transit corridors) and other measures for greater equity (e.g. multi-lingual, discounted fares, drivers’ license not required)

- Closely follows ordinance
- Requires following:
 - MDS
 - Equity plan
 - Battery management plan
 - Description of how operator to meet County MTP goals
- Permit posted [online](#)

Next Steps

- Staff to evaluate permit applications
- Current operators allowed to continue service until decision is made if application received by Dec 31
- Will accept applications throughout 2020 and will not limit number of operators
- Could impose a fleet cap
- One year after ordinance goes into effect, staff will conduct an evaluation. Report will include recommendations for any desired ordinance revisions.
- Staff to evaluate sidewalk riding throughout 2020

Overall Project Lead:

Jim Larsen, Bureau Chief
Arlington County Commuter Services
Division of Transportation

Pilot Operations Lead:

Paul DeMaio, Capital Bikeshare & Shared
Mobility Manager, MetroBike
Arlington County Commuter Services

Evaluation Report Lead:

Lama Bou Mjahed, Ph.D., Research
Director, DS&MG
Arlington County Commuter Services

Ordinance Lead:

Ritch Viola, Bicycle & Pedestrian
Programs Manager
Division of Transportation

Program Email Address:

mobility@arlingtonva.us