

Briefing on the Draft Update of the Bicycle and Pedestrian Plan for the National Capital Region

Michael Farrell
TPB Staff

Presentation to the
Citizens Advisory Committee
November 13, 2014

Background

- Update to the 2010 Plan
 - Updates Every Four Years
- Advisory to the CLRP
 - Not financially constrained
- Identifies:
 - Planned major bicycle and pedestrian projects through 2040
 - “Recommended Practices”
 - Goals and Performance Measures
 - From the TPB *Vision* and from *Region Forward*
 - Trends in policy, mode share, & safety

Bicycle and Pedestrian Plan for the
National Capital Region



DRAFT November 7, 2014

National Capital Region Transportation Planning Board

Plan Development

- Oversight
 - Bicycle and Pedestrian Subcommittee of the TPB Technical Committee
- Project listings
 - Submitted by state and local jurisdictional staffs
 - On-line database
 - As of (roughly) June - October 2014
- Criteria for including projects:
 - Of a size and scope to be regionally significant
 - Regional connectivity
 - Access to transit, pedestrian safety

2014 Plan Outline

- Chapter 1: Planning context of federal, state, and local bicycle/pedestrian policies and plans
- Chapter 2: Demographic and geographic overview of bicycling and walking in the region
- Chapter 3: Pedestrian and Bicyclist Safety
- Chapter 4: Overview of existing facilities
- Chapter 5: Goals and Indicators
- Chapter 6: Recommended Practices
- Chapter 7: The 2040 Network

New Since 2010:

Bigger Plans

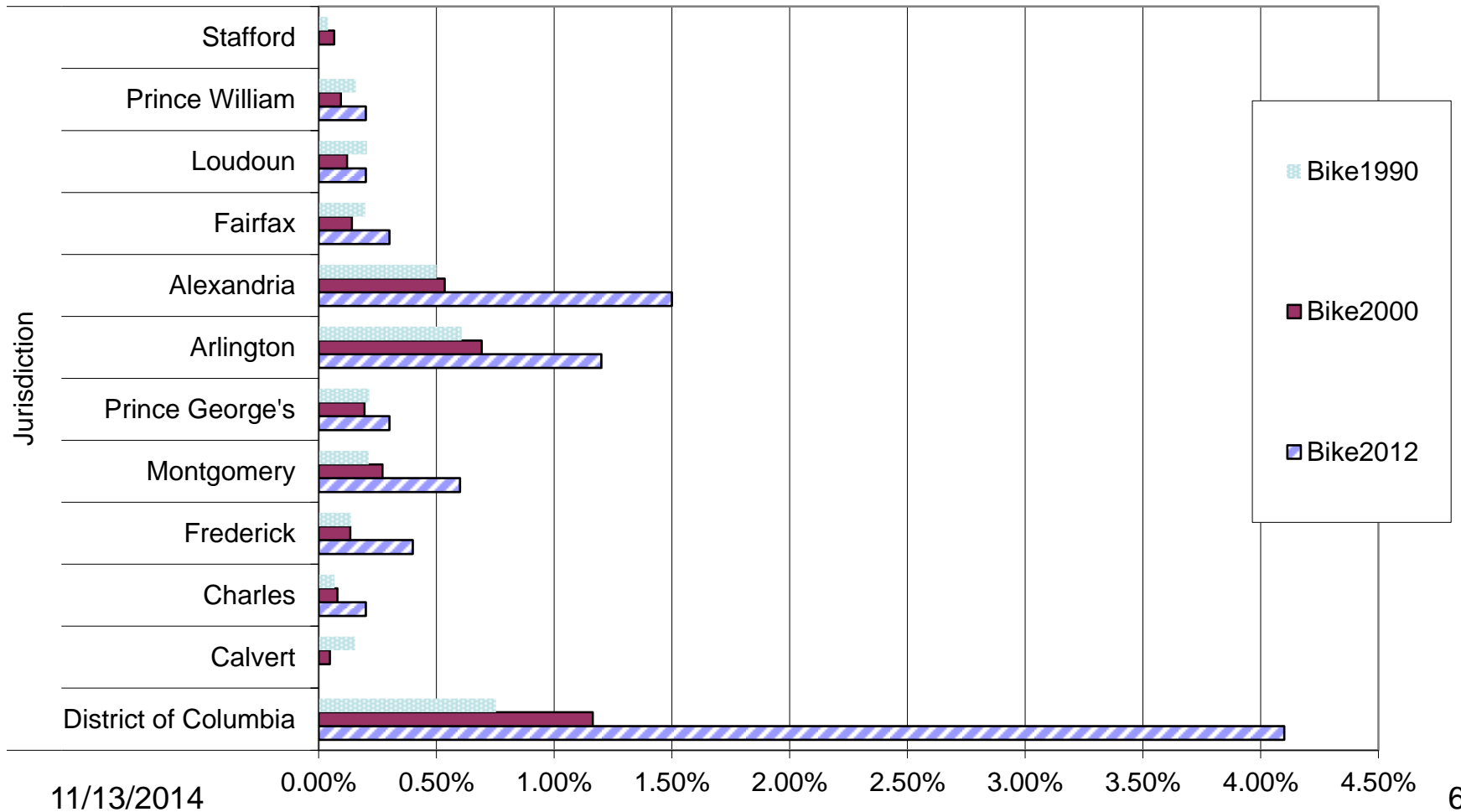
(Chapter 1)

- Regional Transportation Priorities Plan
- MAP-21
 - Transportation Alternatives Program
- TIP
 - B/P funding increased from 1% of total in FY 2010-2015 to 2% of total in FY 2015-2020
- Access to Metrorail
 - Metrorail Expansion
- Complete Streets
 - Regional Policy
 - State and Local Policies

More Bicycling

(Chapter 2)

Chart 2-15: US Census - Percentage of Workers Biking to Work



Better Metrorail Access

Table 2-8: Mode of Access to Metrorail - % of Daily Total	2012	2007	AM Peak - 2012	AM Peak - 2007
Bus	15.3	15.6	21.9	22.2
Auto Driver	12.6	13.7	25.6	29.3
Auto Passenger (drop off)	4.5	5.5	7.8	9.3
Rode with someone who Parked	0.5	0.6	0.9	1
Bike	0.7	0.5	1.0	0.7
Walk	62.2	62.1	37.3	33.3
Commuter Rail	1.5	1.7	3.5	3.8
Shuttle	2.5	n/a	2.0	n/a
Taxi	0.2	0.2	0.1	0.2

MEDICAL CENTER BEFORE AND AFTER, REPLACING OLD RACKS



VIENNA STATION BEFORE AND AFTER, NEW ACCESS POINT

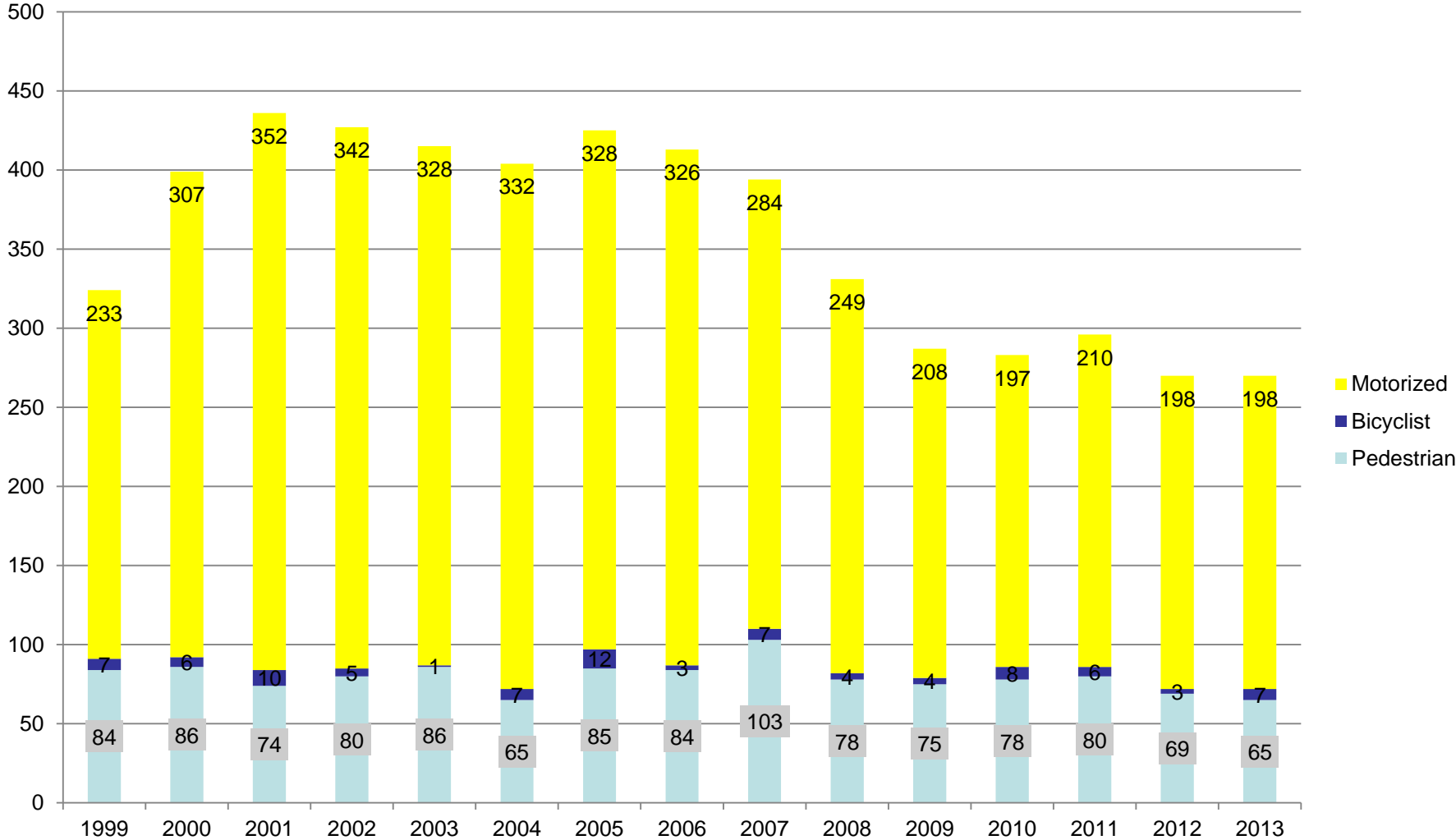


FRANCONIA – SPRINGFIELD BEFORE AND AFTER, NEW SIDEWALK TO IMPROVE SAFETY

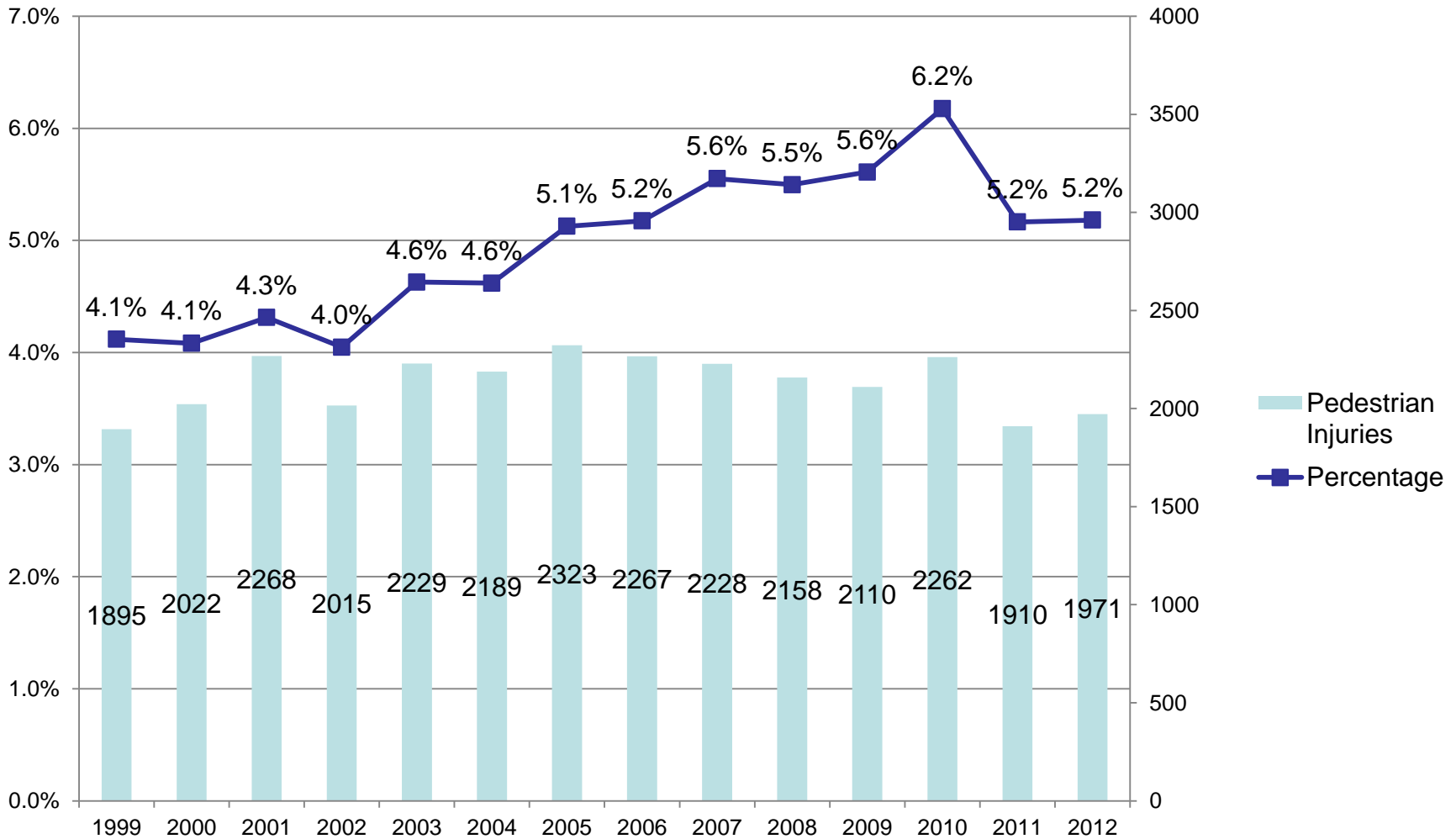


Fewer Motorized Fatalities

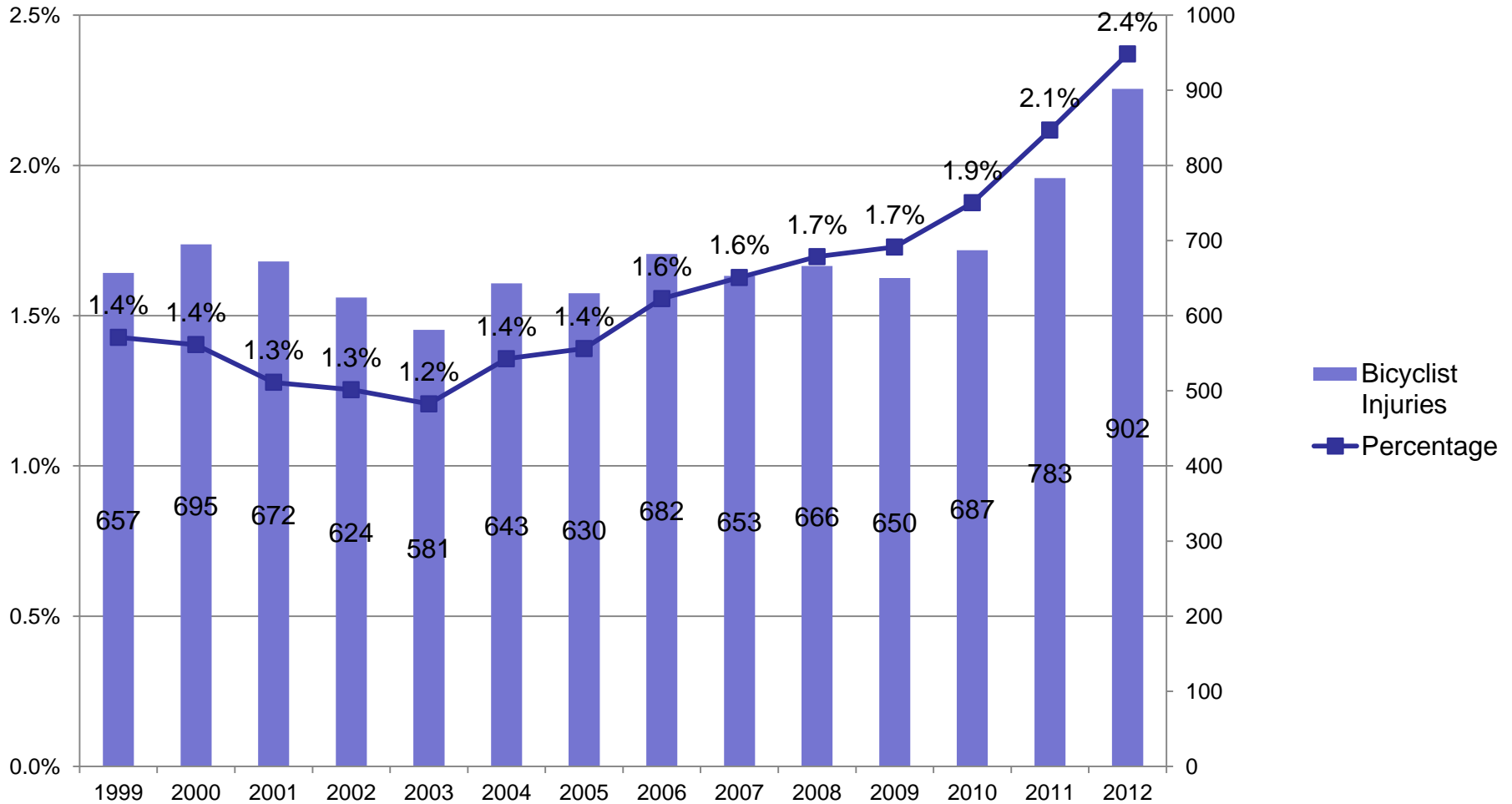
(Chapter 3)



Fewer Motorized Injuries



More Bicyclist Injuries



New Bike Facility Types

(Chapter 4)

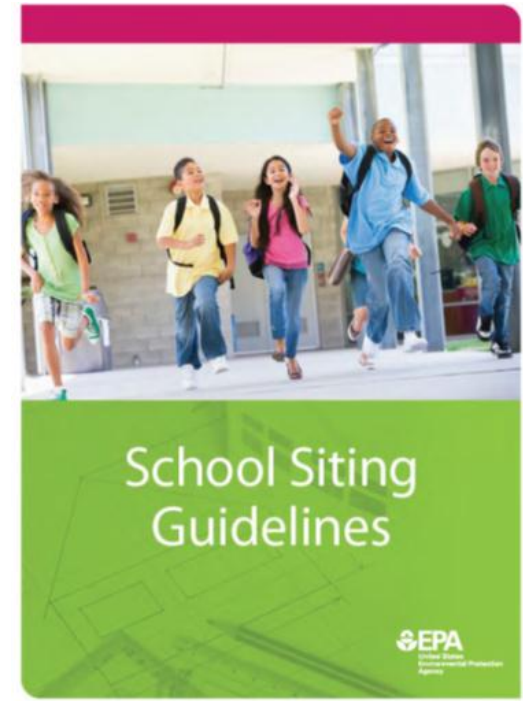
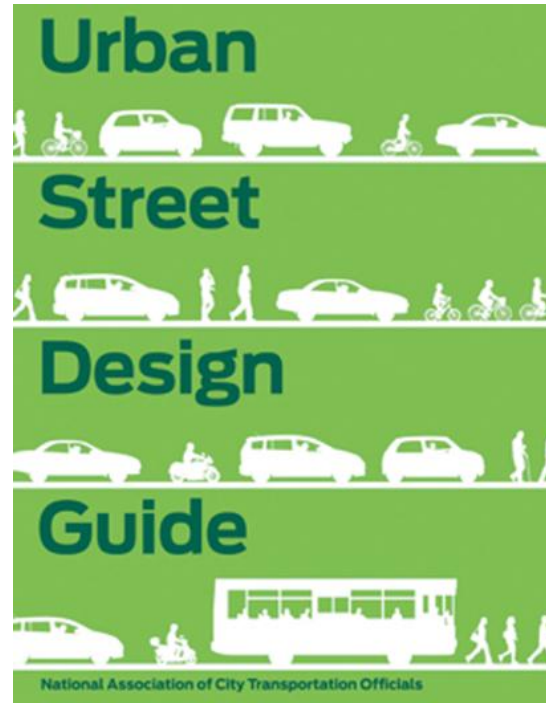
- Protected Bike Lanes
 - Physical buffer
 - Attract users of all ages and abilities
- Green Bike Lanes
- Buffered Bike Lanes
- Bike Corrals
- Metrorail Bike & Ride Facilities



New Recommended Practices

(Chapter 6)

- NACTO [Urban Street Design Guide](#) and [Urban Bikeway Design Guide](#)
- EPA School Siting Guidelines
- ITDP Bike Share Planning Guide



More Planned Facilities

(Chapter 7)

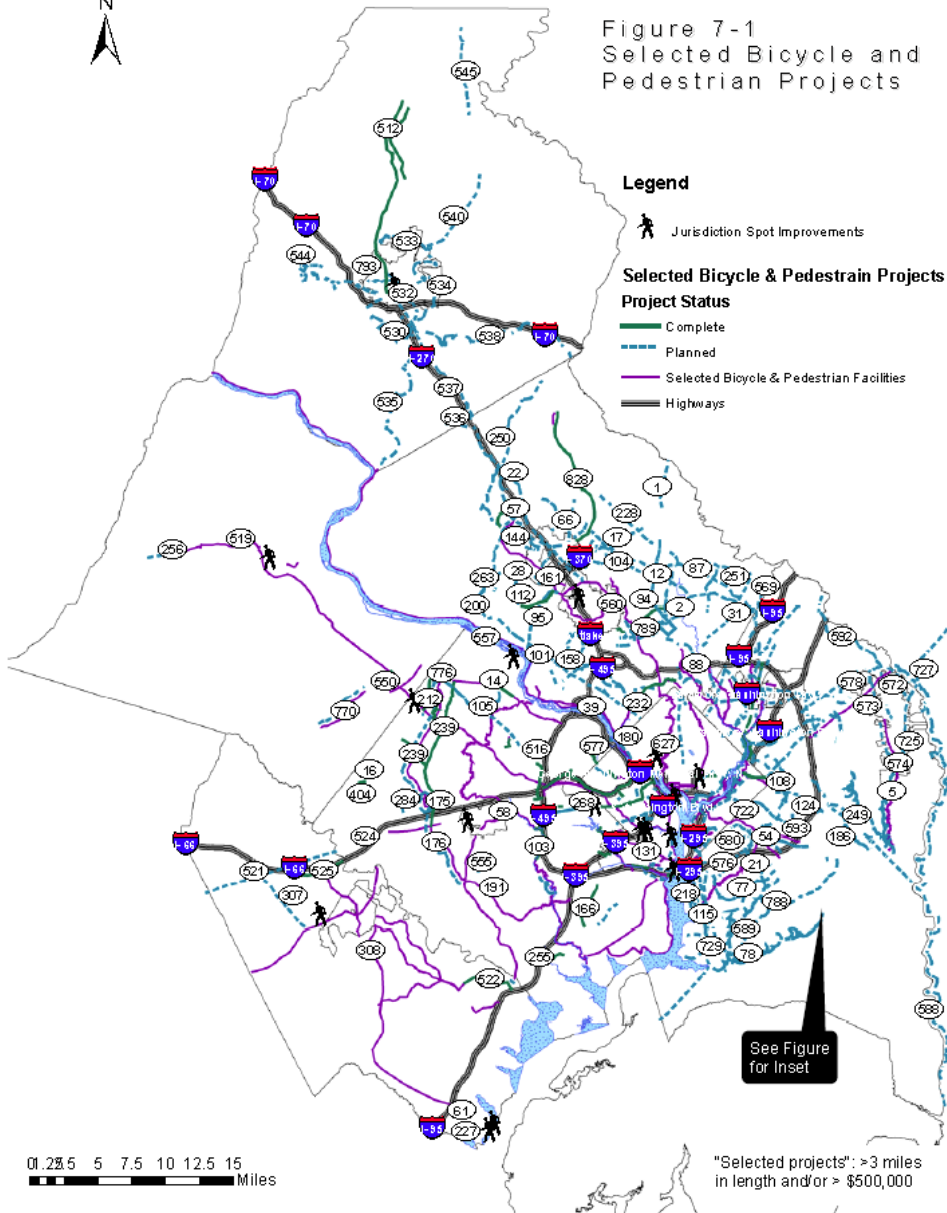
**Table 7-1:
Miles of Bicycle/Pedestrian Facilities
in the Washington Region**

Facility Type	Total in 2005	Completed 2006-2010	Completed June 2010 – May 2014	Planned New Facilities/Upgrades	Total in 2040
Bicycle Lane	56	35	45	2090	2226
Shared-Use Path	490	53	50	1990	2583
Total	546	88	95	4080	4809

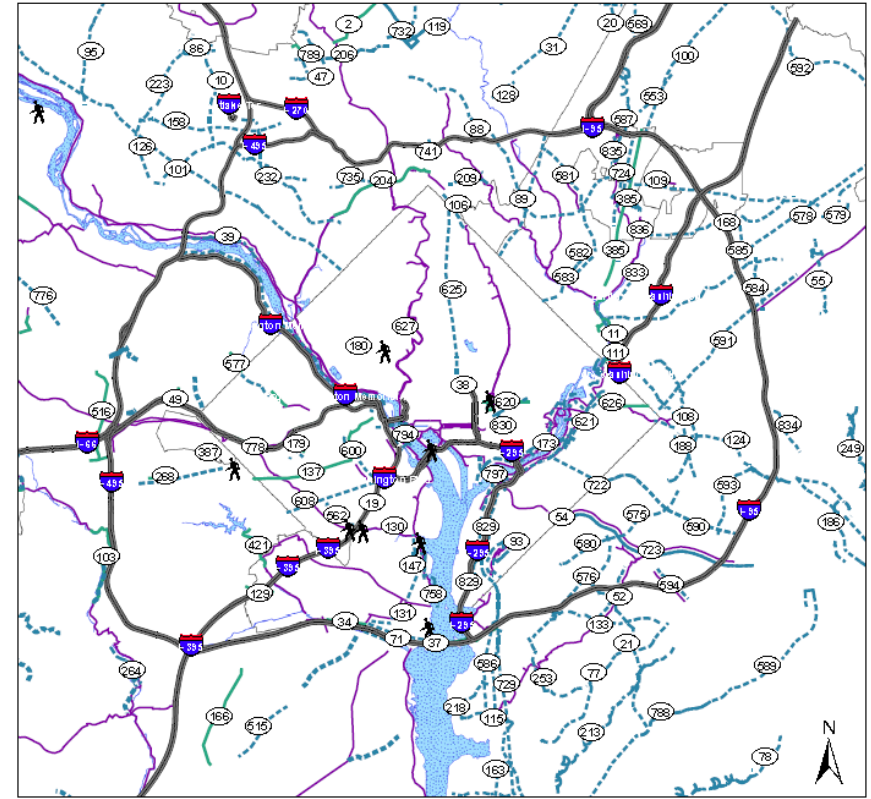
- Roughly \$6 billion in new facilities proposed
= Approximately 6% of anticipated regional transportation funding based on FY 2015-20 TIP
- Planned facility mileage is nearly four times what was in the 2010 plan



Figure 7-1
Selected Bicycle and Pedestrian Projects



0 2.5 5 7.5 10 12.5 15 Miles



0 0.5 1 2 3 4 5 6 Miles

Figure 7-2
Selected Bicycle and Pedestrian Projects

"Selected projects": >3 miles in length and/or > \$500,000

- Legend**
- Selected Bicycle & Pedestrian Projects**
 - Complete
 - Planned
 - Selected Bicycle & Pedestrian Facilities
 - Jurisdiction Spot Improvements
 - Highways

Follow-On Actions

- On-Line Mapping and Visualization
 - Maps linked to project database
 - Other information can be added
 - More accessible to the public
- Database Updates
 - Every 2 years
- Plan Updates
 - Every 4 years

Some projects built since 2010



11/13/2014



16