

# Updates to the TPB Regional Transportation Data Clearinghouse (RTDC)

TPB Regional Public Transportation Subcommittee  
27<sup>th</sup> January 2015

Charlene Howard, GISP, TPB/COG staff  
Nicole McCall, TPB/COG Staff

National Capital Region Transportation Planning Board (TPB)  
Metropolitan Washington Council of Governments (COG)

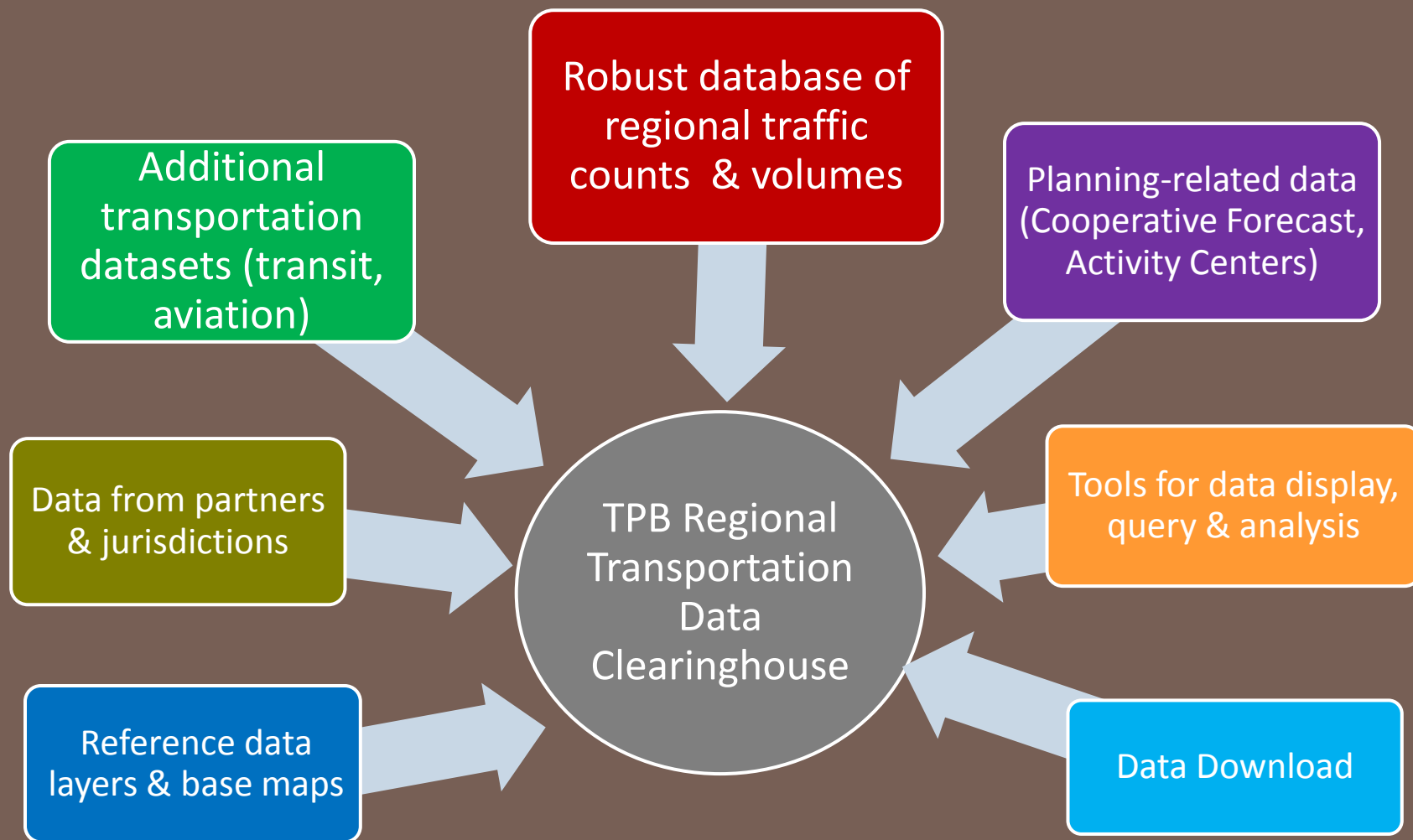


# Background: *what is the RTDC?*

- Overall, it is a collection of transportation-related data
  - ▣ Includes our own datasets & data collected from member agencies & assembled by us
  - ▣ Additional Esri base maps for reference
  
- RTDC first released over a decade ago as an ArcView 3.2 project
  - ▣ Focus on providing a regional database of traffic counts tied to the TPB master network
  - ▣ *Expanded to include transit-related count data & other datasets*
  
- Currently available as a *desktop* web map application using the ArcGIS Viewer for Flex (version 3.6)
  - ▣ First update for this year (March) will continue on this platform
  - ▣ Additional web maps and applications forthcoming; will utilize Esri's ArcGIS Online (AGOL) for Organizations

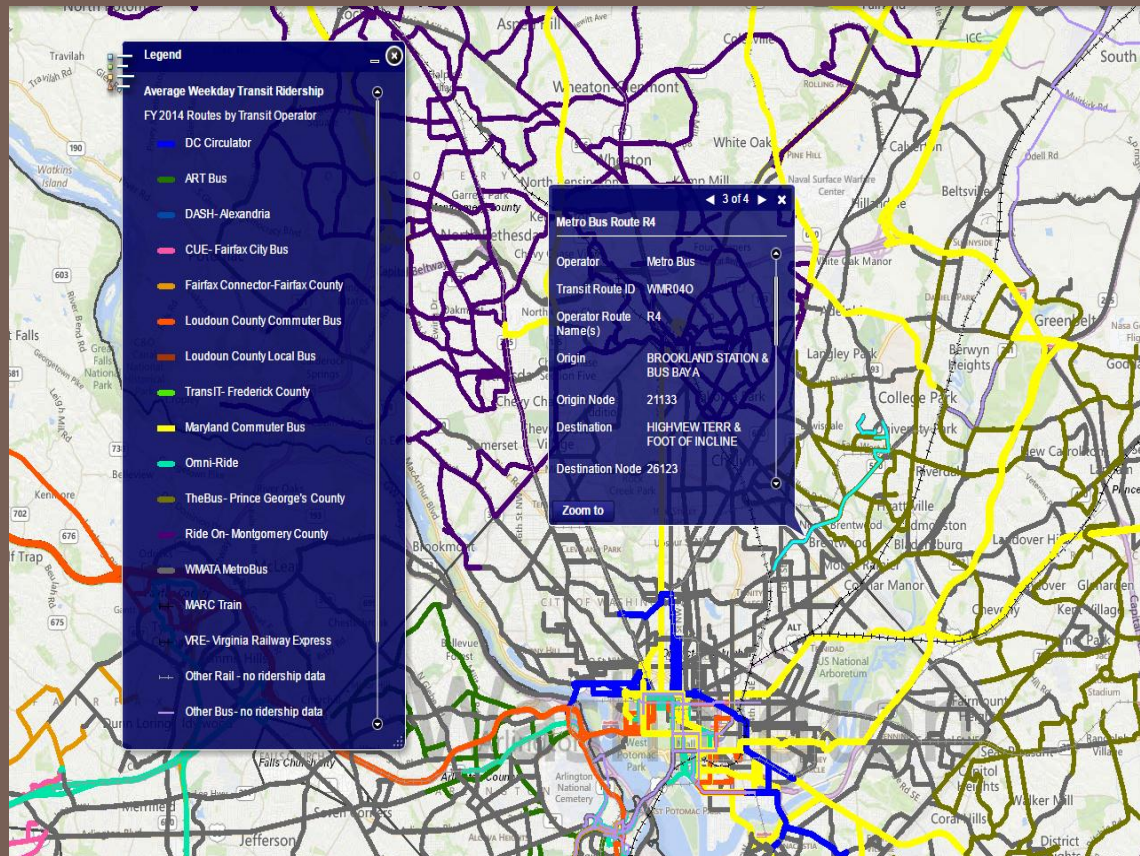


# Background: *what is the RTDC?*



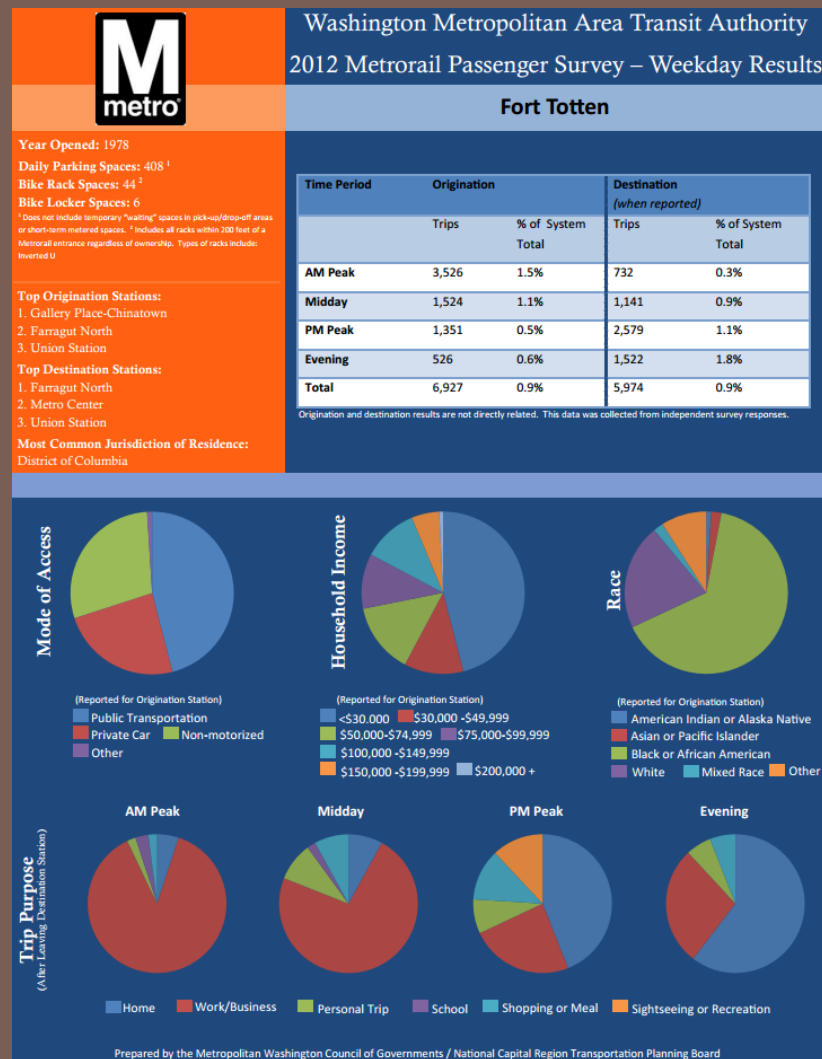
# Transit data in the RTDC: *Average Weekday Ridership*

- Application updated with FY 14 data
- Ridership data obtained from region's transit operators; joined to the TPB master network transit routes
- Bus, commuter bus, commuter rail service included



# Transit data in the RTDC: WMATA data

- WMATA 2012 Rail Passenger Survey data
  - Summary weekday results by time of day (AM/PM peaks, midday, evening, late night); available as dataset attributes
  - Survey Report available for each station; open PDF attachment in application to view and/or download
  
- Additional Metrorail station information
  - Historical ridership 1977-2014
    - “Average Weekday Passenger Boardings”
  - Available parking options (auto, bicycle)



# Schedule

- The next version of the RTDC will be demonstrated at the March TPB Travel Forecasting Subcommittee meeting (20<sup>th</sup> March)
  - *Refresh all current RTDC datasets with available data updates*
  - Will be available in the same manner (the ArcGIS For Flex viewer)
    - Application code will be changed to reflect dataset updates
    - No additional application enhancements
- The RTDC on ArcGIS Online (AGOL)...*coming soon*
  - Transition will occur in parallel to the March update
  - All RTDC datasets available as AGOL datasets and in the current RTDC Flex viewer
  - New RTDC datasets only available as AGOL web maps and applications
  - Future RTDC project page- data, download, maps and apps



# Closing

- Visit the RTDC
  - <http://gis.mwcog.org/webmaps/rtdc>
  
- Thanks to
  - Regional transit partners for providing us updated data
  - RTDC team: Nicole McCall, Jessica Mirr, Martha Kile
  
- Questions?
  - Charlene Howard ([charlene@mwkog.org](mailto:charlene@mwkog.org))

