



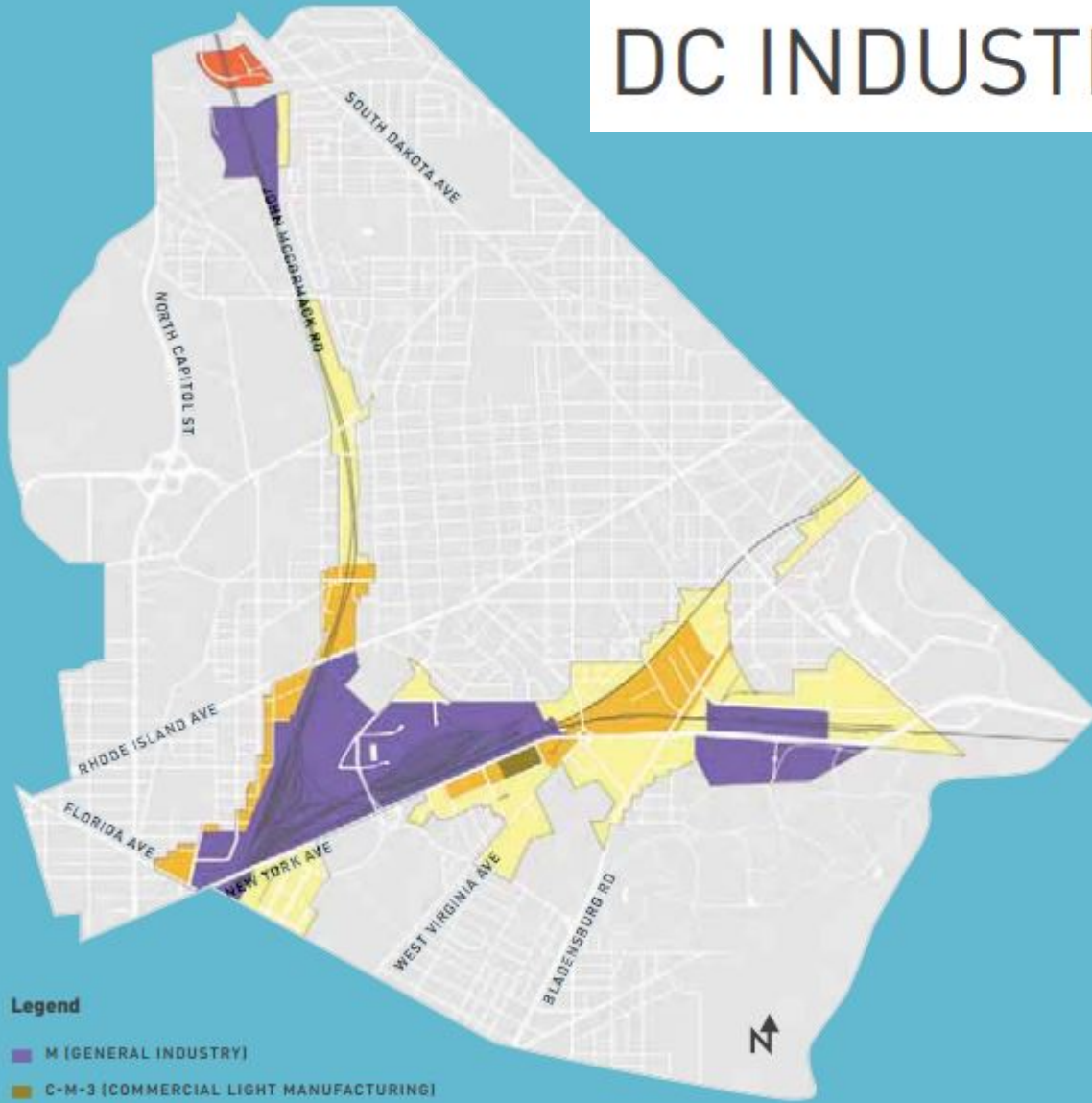
Freight as an Enabler of Livability

d.

Laura Richards
Washington, DC

EXISTING ZONING

DC INDUSTRY MATTERS



Legend

- M (GENERAL INDUSTRY)
- C-M-3 (COMMERCIAL LIGHT MANUFACTURING)
- C-M-2 (COMMERCIAL LIGHT MANUFACTURING)
- C-M-1 (COMMERCIAL LIGHT MANUFACTURING)
- CR (MIXED USE COMMERCIAL RESIDENTIAL)

Source: Office of the Chief Technology Officer; Ayers Saint Gross

Big trucks whizzing through D.C. neighborhoods signal city's fortune but residents' nightmare



Trucks travel on Franklin Street NE, at the intersection with 13th Street NE in Brookland. Residents say large trucks should stay off the streets with mostly single family homes, but the city has designated Franklin and 13th as truck routes. (Luz Lazo/The Washington Post)

Ward 5 pushes back as city moves more trucks to already industrial neighborhood

Good morning [#Brookland](#)! Weve got [@DDOTDC](#) to "thank" for choosing business over safety & people. [#notrucksbrookland](#)



#Brookland wants this fixed Whosgonnahelp? #RerouteTrucks
#NoTrucksBrookland @DDOTDC @TeamMuriel @DCcouncil #DCGovt



Sadly its a parade this morning & only 10am. Clearly more work to do.
#readthesigns #notrucksbrookland @luzcita @DCPoliceTraffic @DDOTDC

caught sneaking thru on Girard between 13&14 st. [#notrucksbrookland](#)
[@anc5B03](#) [@MayorBowser](#) [@ABC7News](#) [#mpddc](#) [@DDOTDC](#)

Do street signs matter? DC neighborhood wants action

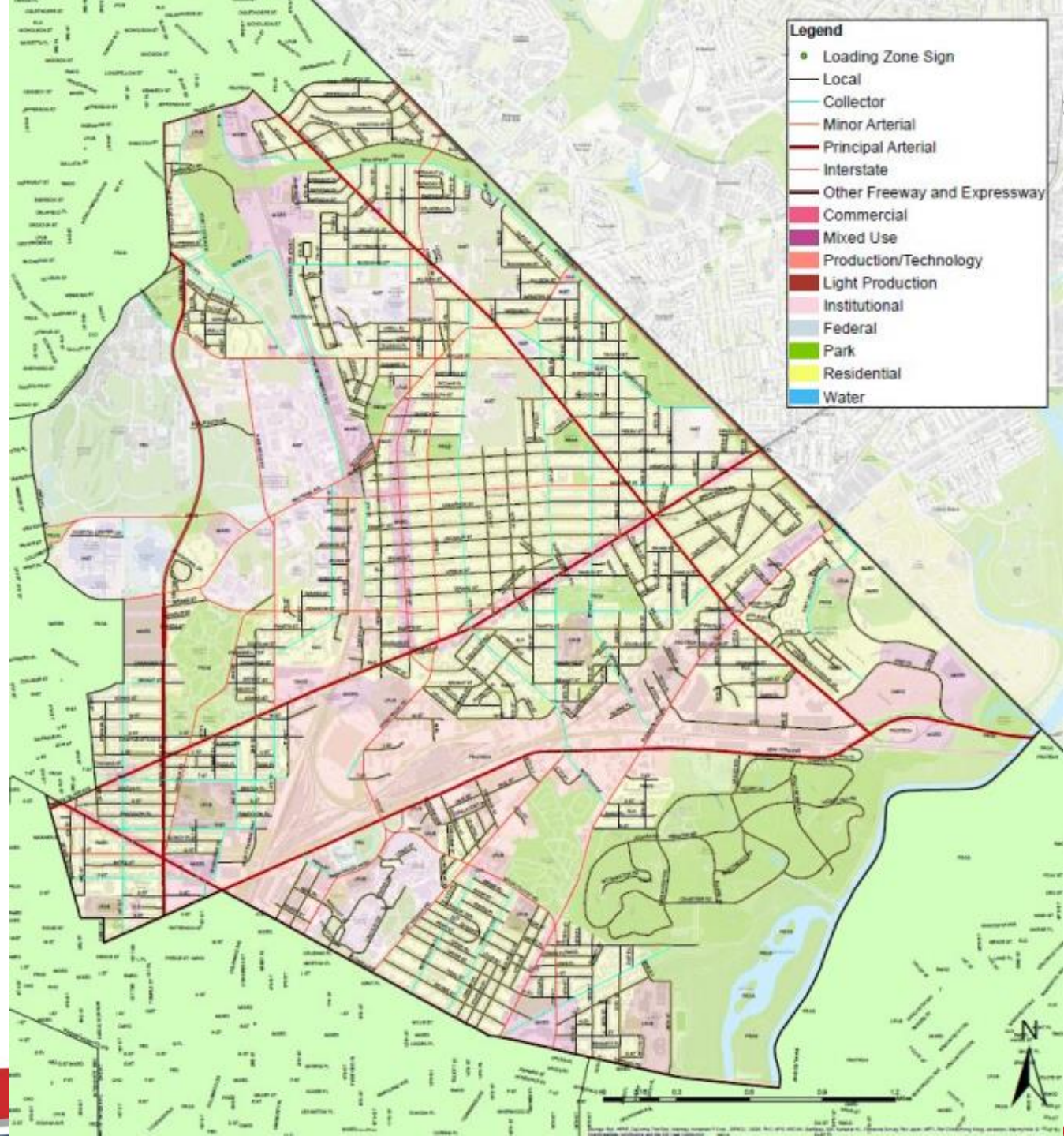


WASHINGTON (ABC7) —

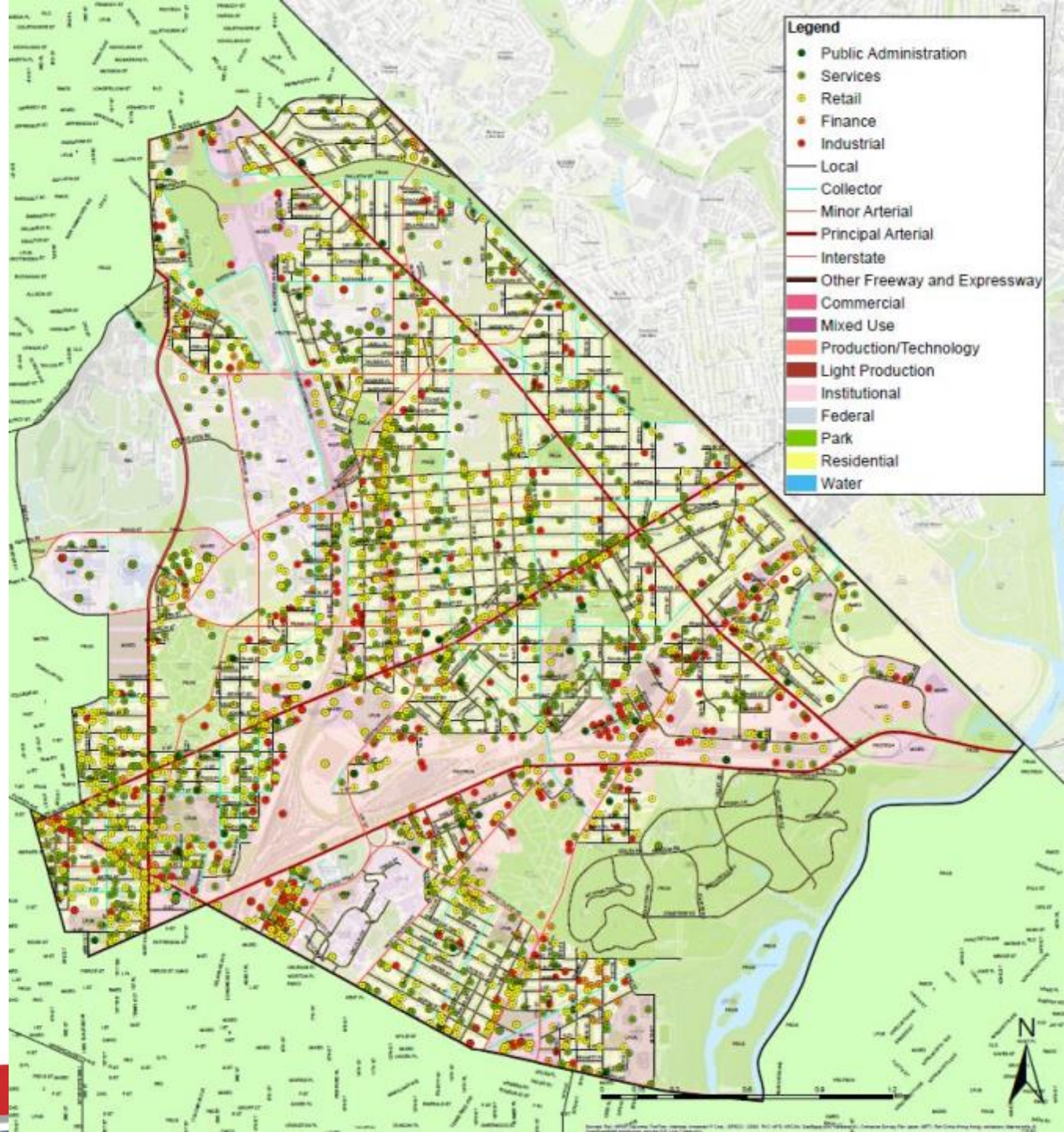
Do street signs matter? People living in the Brookland area of DC would likely say no.

Every day, huge commercial trucks drive right pass signs that say "No Thru Trucks" and head into what would be a quaint neighbor. And the people who live in Brookland just want it to stop - they want their quiet life back.

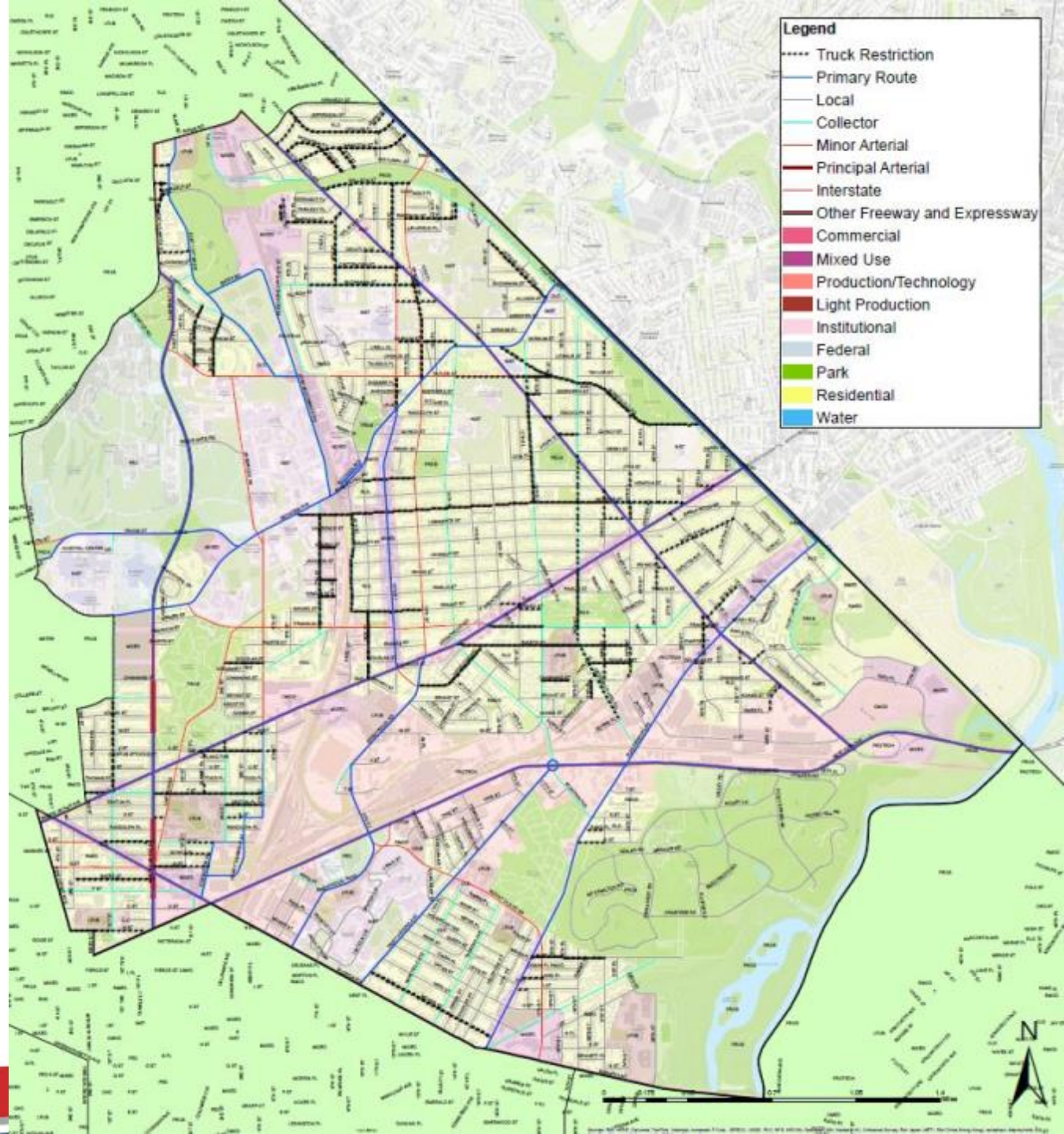
Ward 5 Land Use



Ward 5 Land Use & Business Points



Ward 5 Land Use & Truck Restrictions



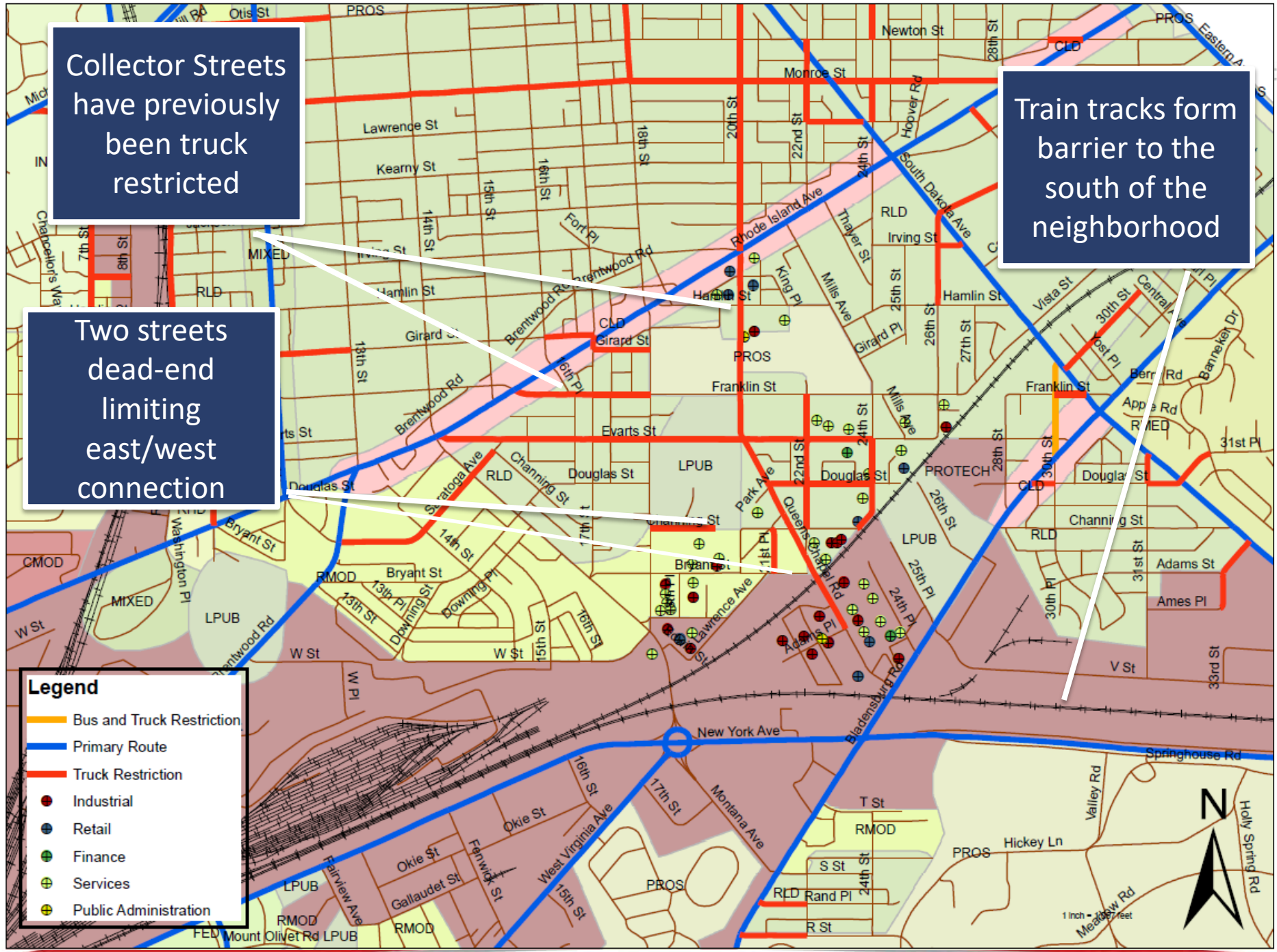
Collector Streets have previously been truck restricted

Train tracks form barrier to the south of the neighborhood

Two streets dead-end limiting east/west connection

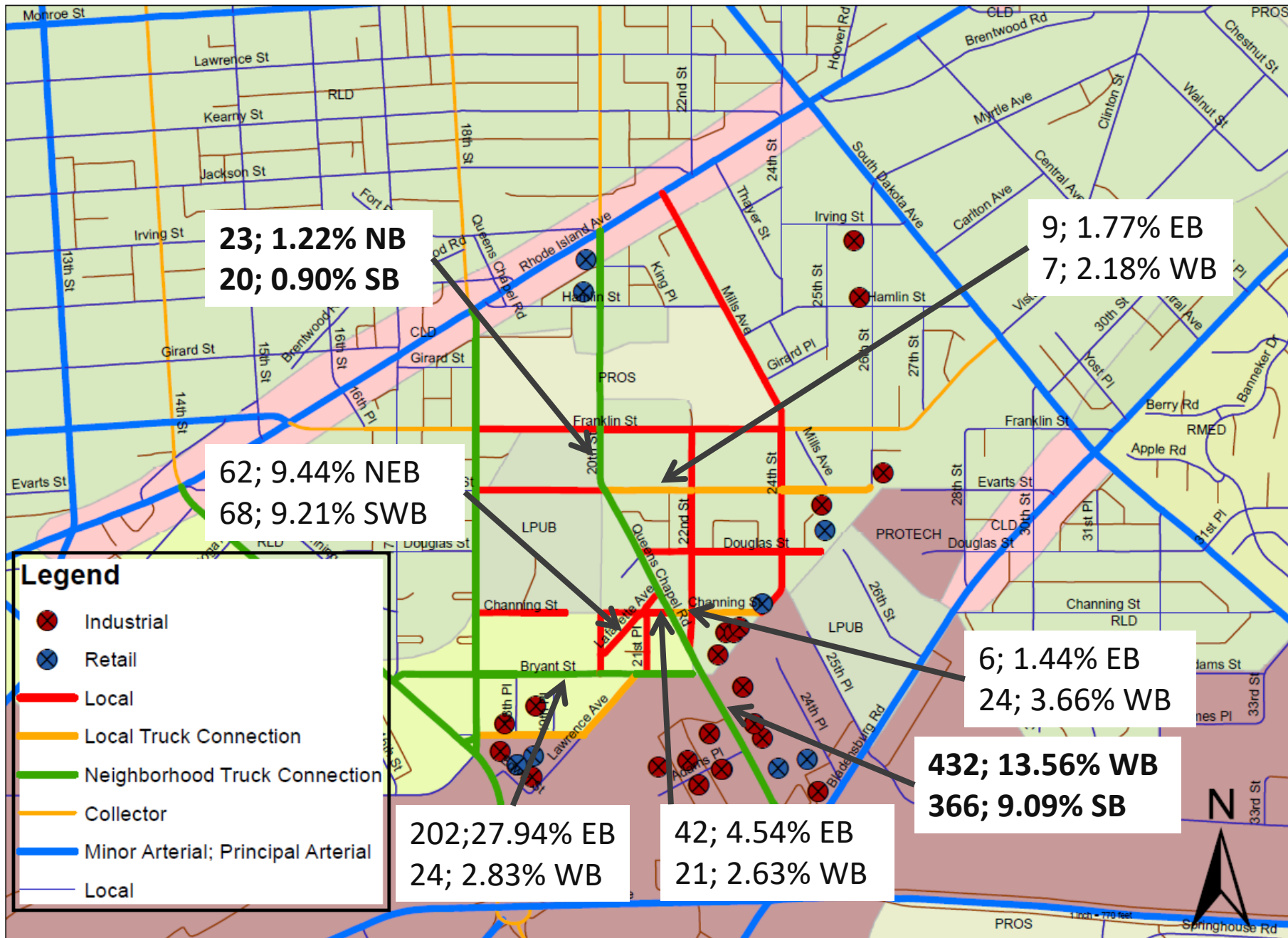
Legend

- Bus and Truck Restriction
- Primary Route
- Truck Restriction
- Industrial
- Retail
- Finance
- Services
- Public Administration



1 inch = 100 feet

Queens Chapel Area: Neighborhood Truck Routing



d.

District Department of Transportation

