

# Round 8.3 Cooperative Forecasts

## Process and Review

**Greg Goodwin**, Regional Planner  
MWCOCG Department of Community Planning &  
Services

Planning Directors Technical Advisory  
Committee  
January 17, 2014

# Use of Round 8.3 Cooperative Forecasts

**2014 Air Quality  
Conformity  
Analysis**

**Transportation  
Planning Board  
Analysis**

**Activity Center  
Update Analysis**

### **3 Major Refinements Include:**

- 1. The city of Frederick will have Cooperative Forecast totals for the first time**
- 2. Montgomery and Prince George's Counties will make TAZ distribution modifications only**
- 3. New data for Anne Arundel, Carroll, and Howard Counties from the Baltimore Metropolitan Council (BMC Round 8).**

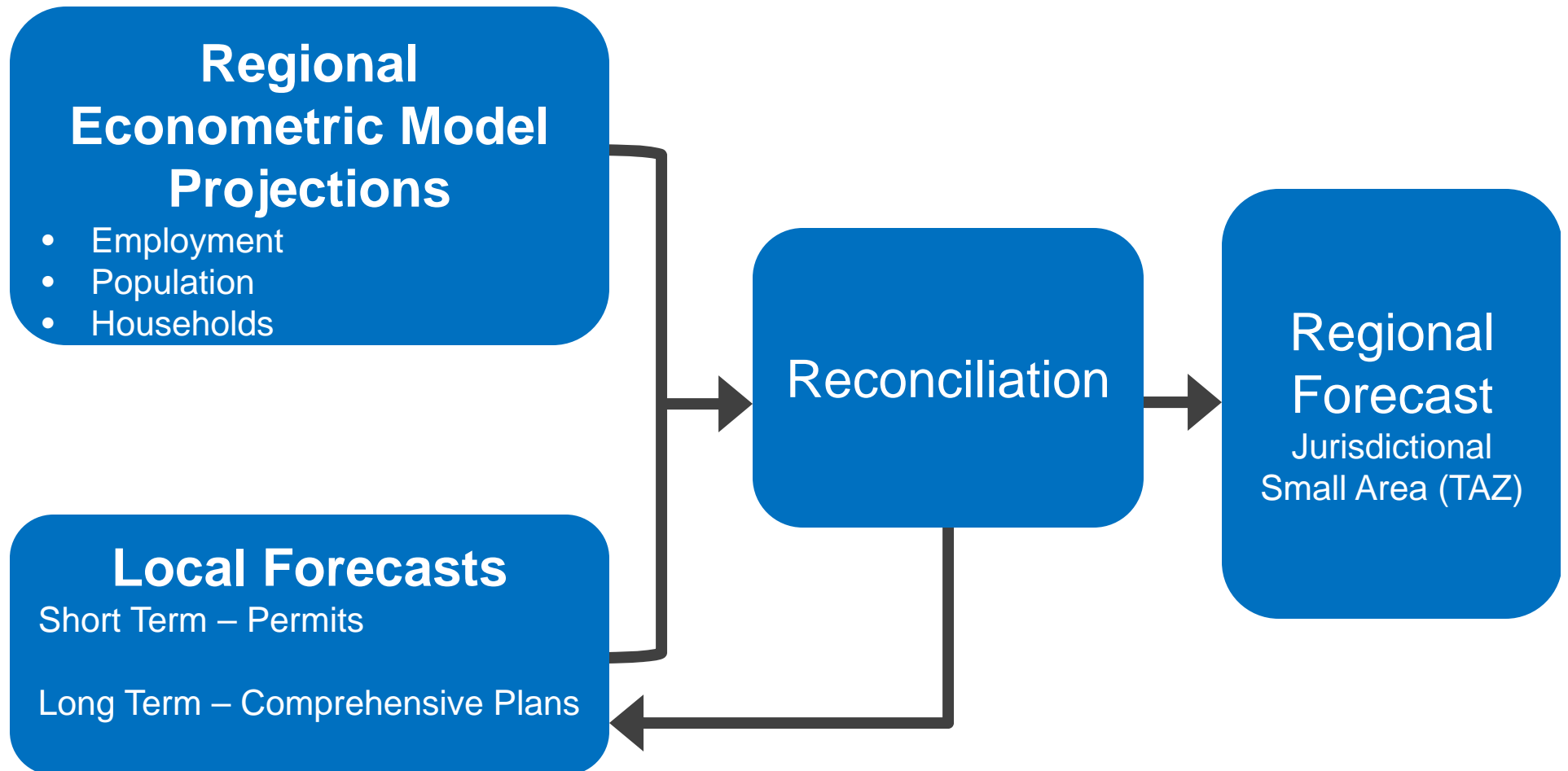
# Round 8.3 *is voluntary*

Some jurisdictions chose not to make any changes

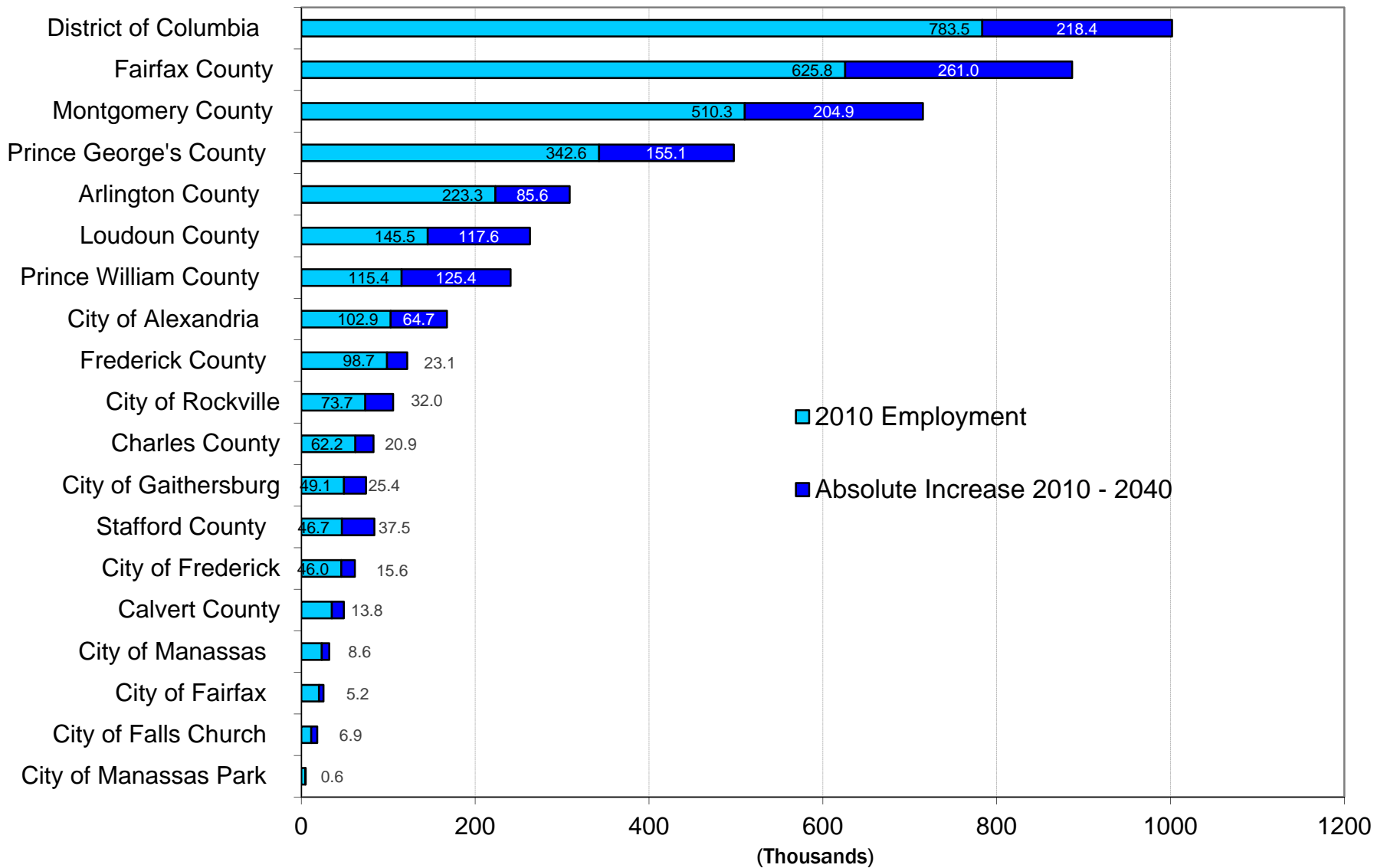
## **Three Jurisdictions Revised Their Control Totals:**

- **District of Columbia**
- **Loudoun County**
- **Fairfax County (Employment Only)**

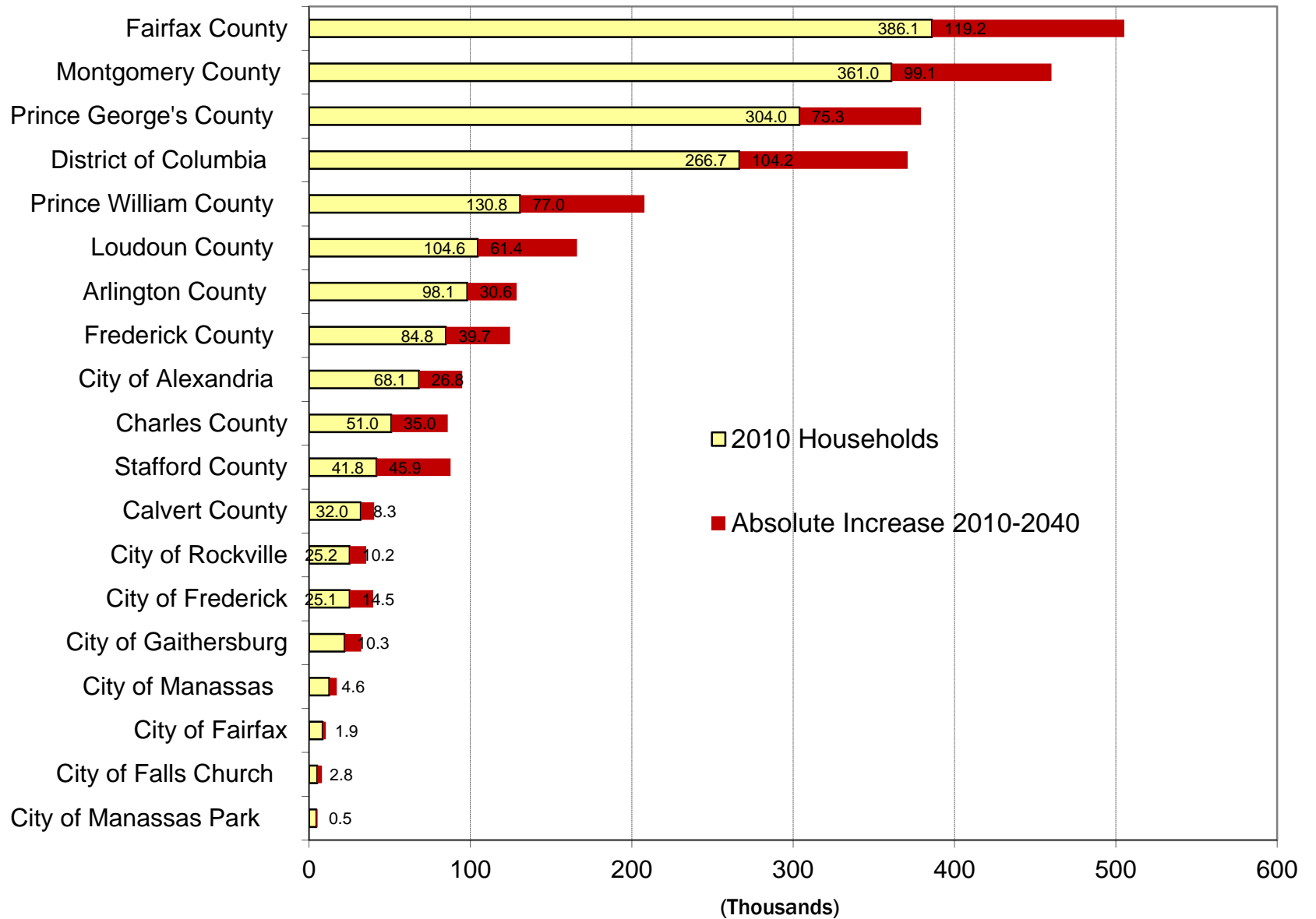
# Cooperative Forecasting Process



# Employment 2010 - 2040

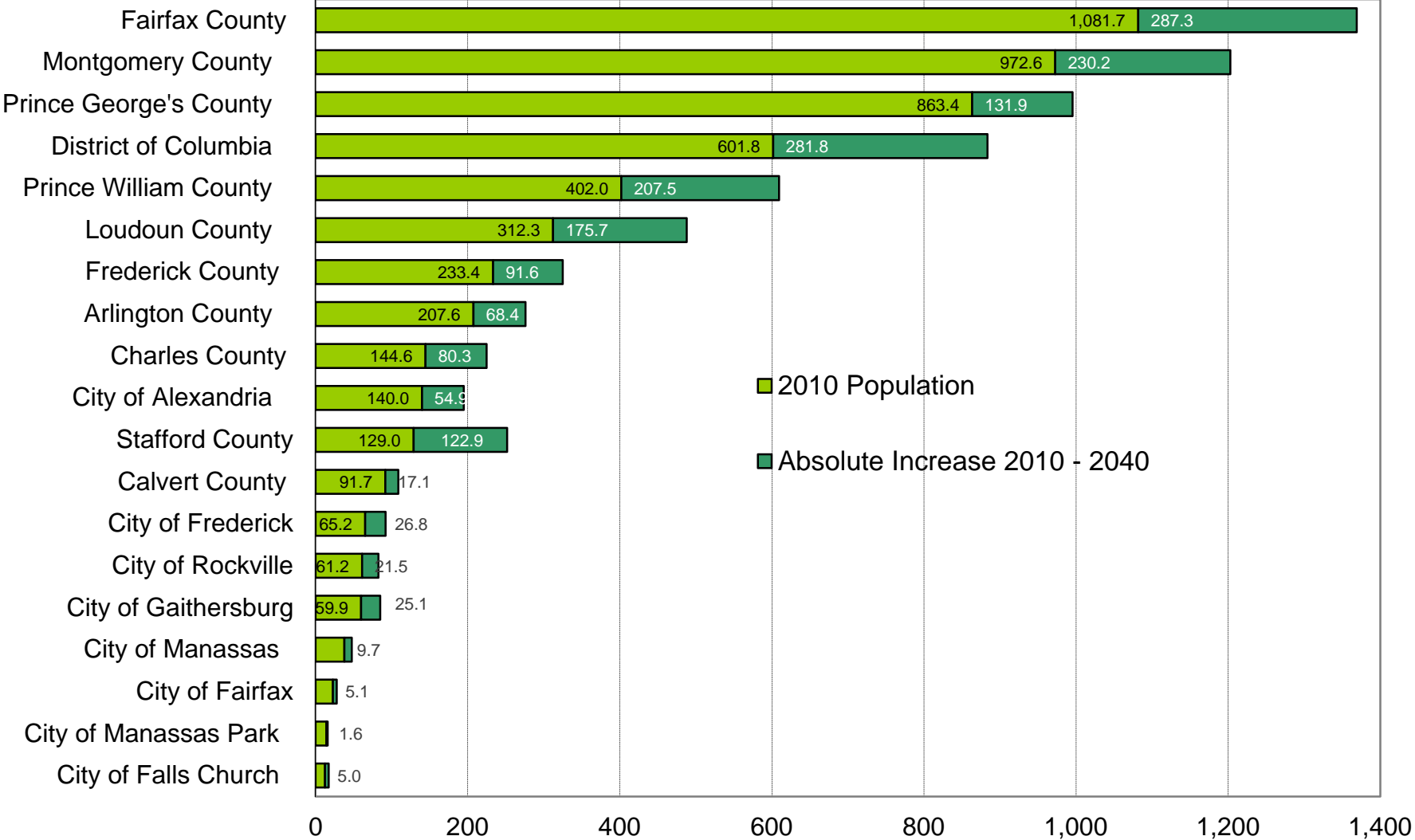


# Households 2010 - 2040





# Population 2010 - 2040



(Thousands)

# Econometric Model 2010 Forecast vs. 2010 Census

**The Round 8.0 Econometric Model was  
developed in 2009 prior to the 2010 Census**

# **Econometric Model 2010 Forecast vs. 2010 Census**

- **The 2010 Census has been incorporated in to all Round 8.3 Jurisdictional forecasts.**
- **To adjust the Econometric Model for this new input we propose adding the difference in Households and Population between the 2010 Census and the 2010 Econometric Model to each forecast year**

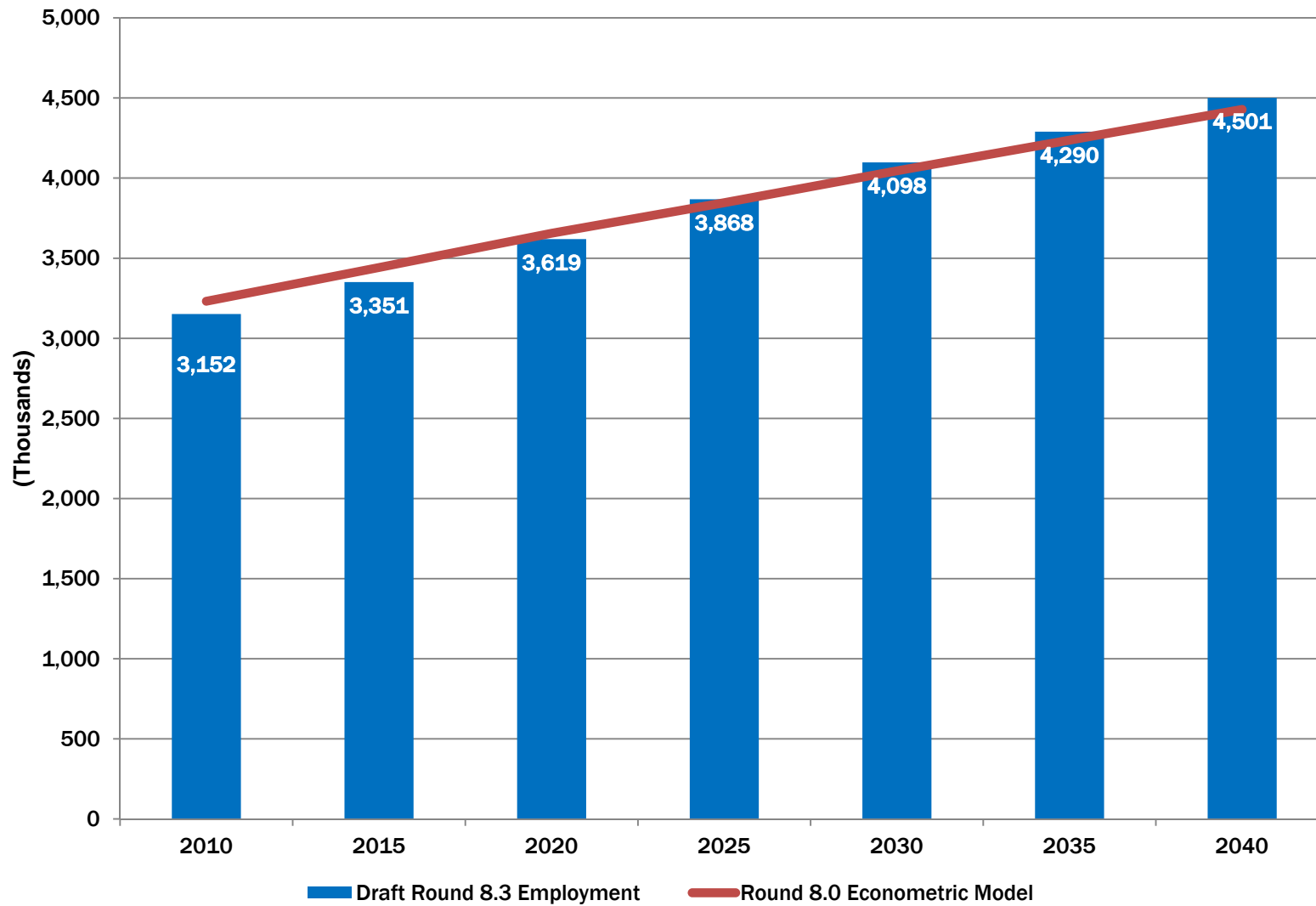
# Econometric Model 2010 Forecast vs. 2010 Census

The difference between the 2010 Forecasts for the model and the 2010 Census Actual count was 42,300 households and 124,100 people.

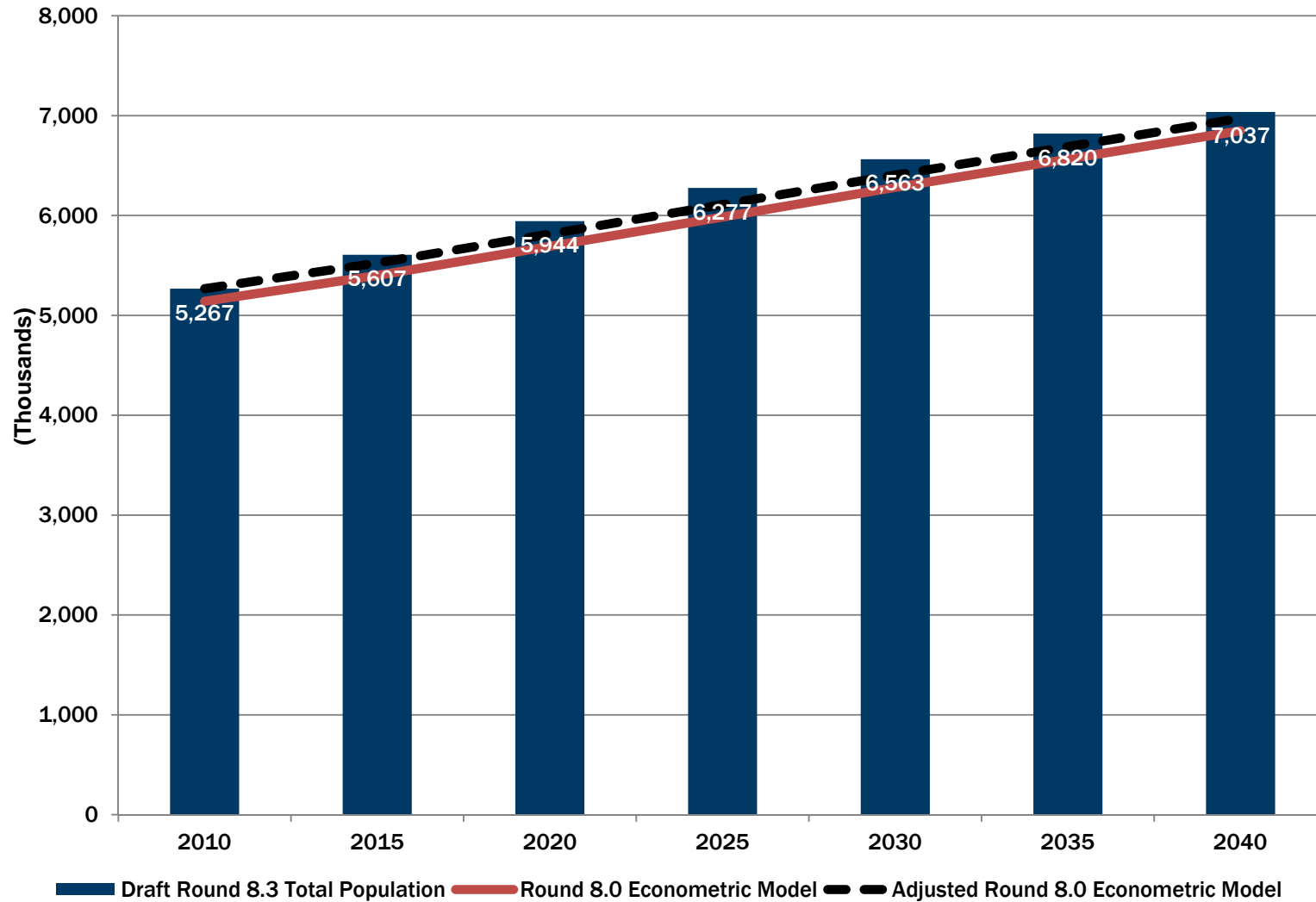
# Econometric Model 2010 Forecast vs. 2010 Census

The dashed line on the following chart depicts how the relationship between the Forecast and Households using the upwardly adjusted Econometric Model

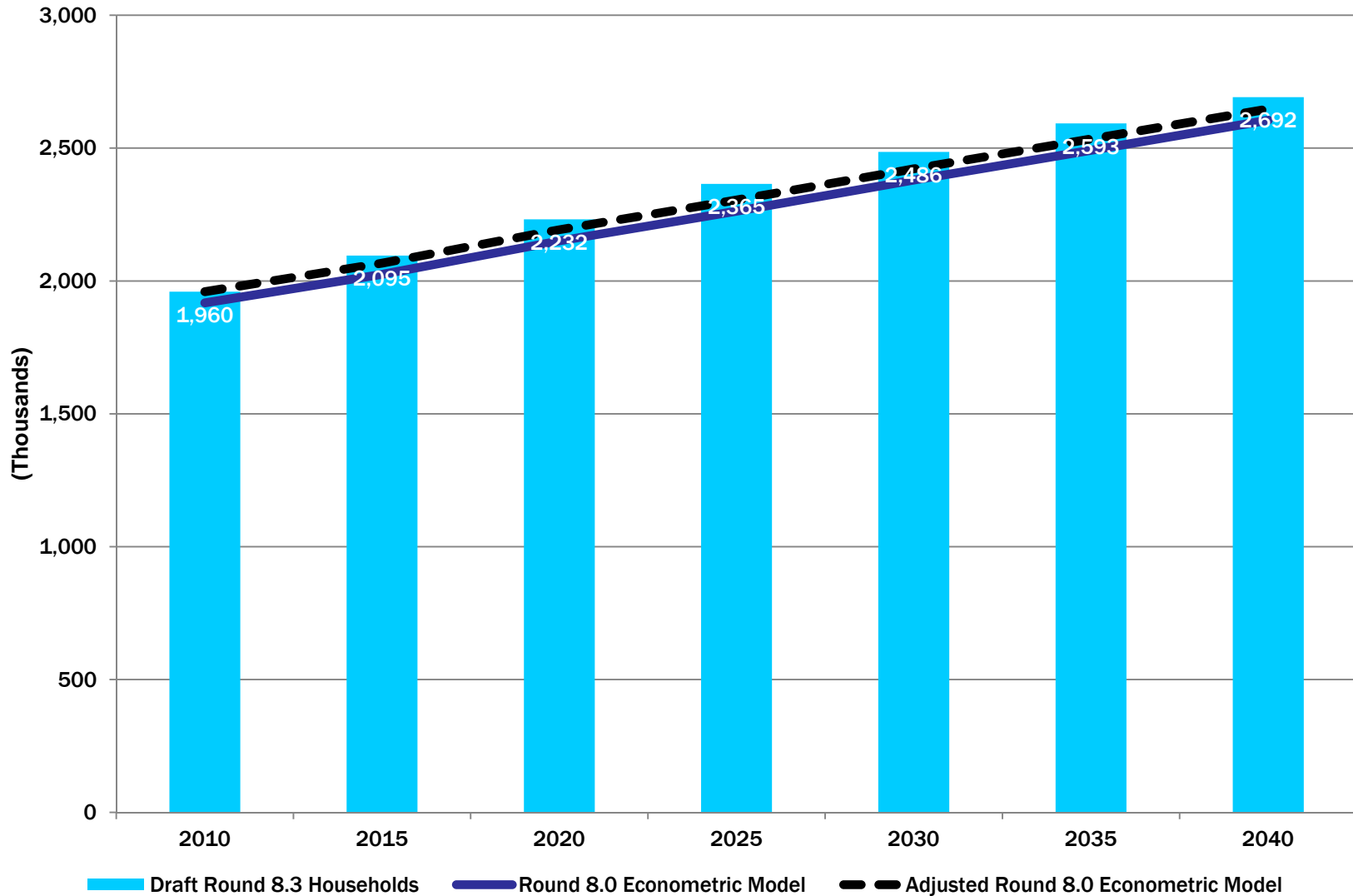
# Employment 2010 - 2040



# Population 2010 - 2040

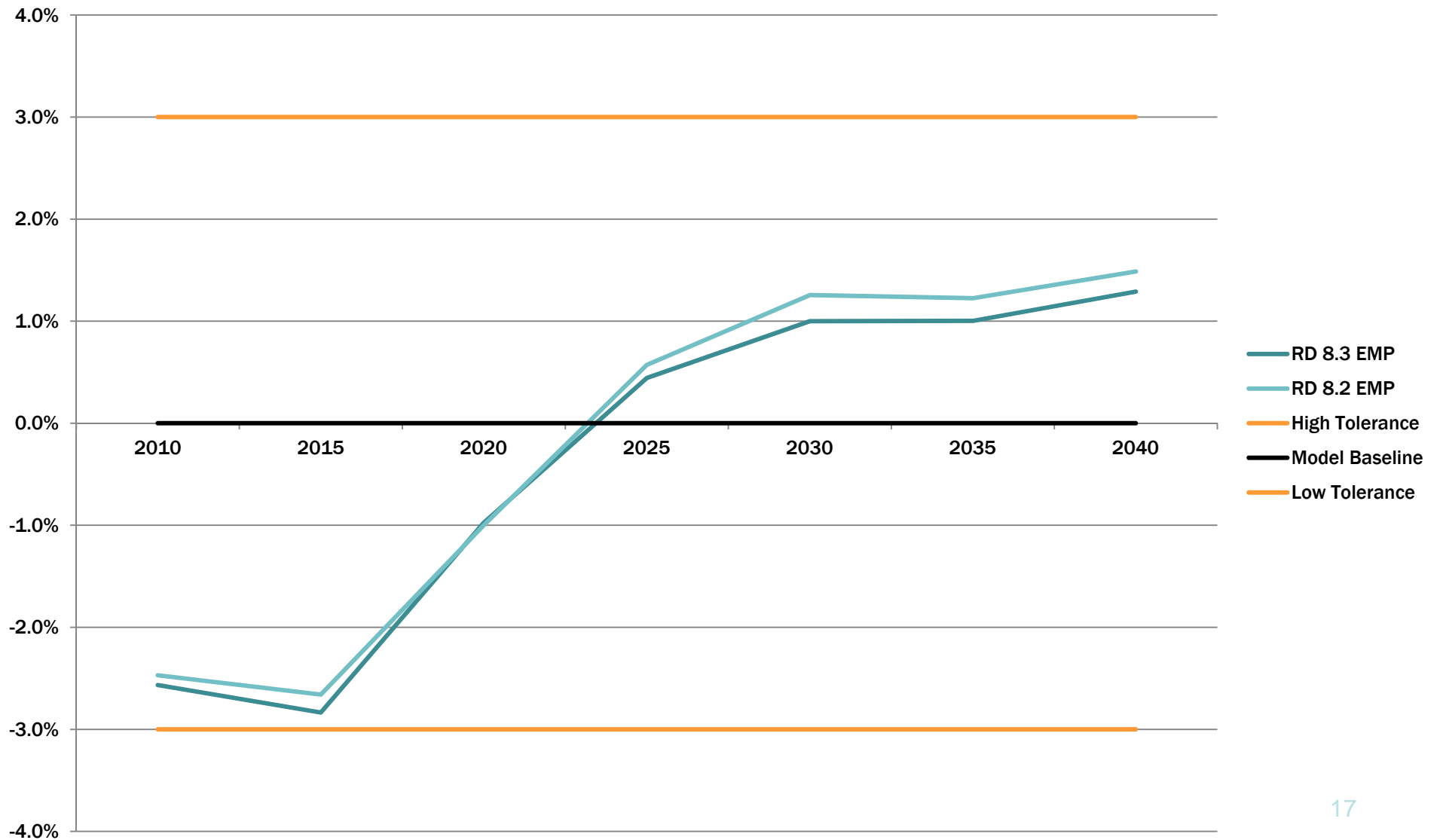


# Households 2010 - 2040





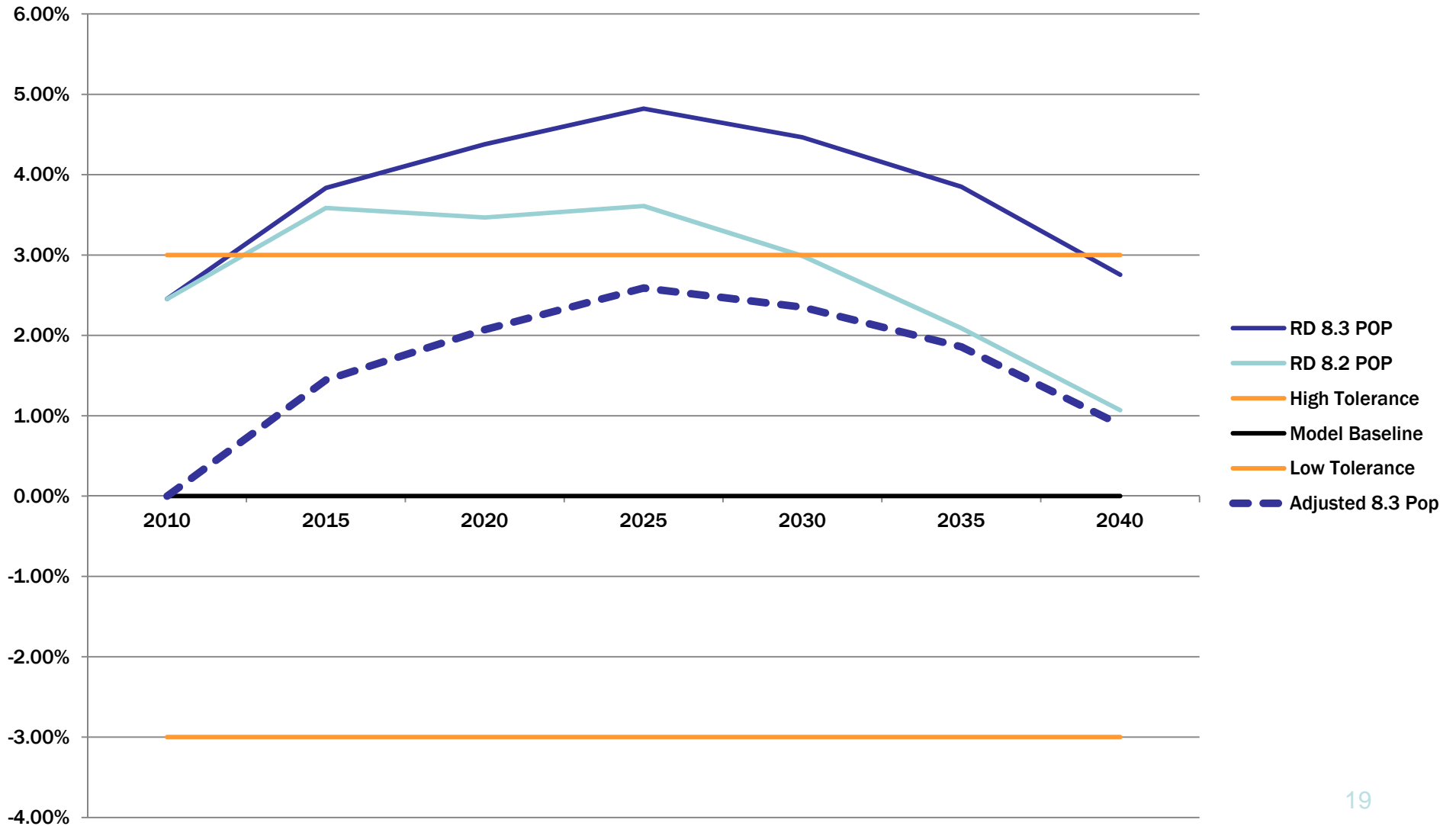
# Comparison with Econometric Model Employment Forecasts



# Comparison with Econometric Model Household Forecasts



# Comparison with Econometric Model Population Forecasts



# Next Steps

- 1. Local jurisdictions submit Round 8.3 forecasts by traffic analysis zone – End of January 2014**
- 2. COG Board will approve “Draft Round 8.3” for use in the Air Quality Conformity Analysis of the 2014 Update to the Financially Constrained Long-Range Transportation Plan (CLRP) FY 2015-2020 Transportation Improvement Program (TIP) – February 2014**
- 3. Final approval and adoption by the COG Board - July 2014**

# Questions . . .