

HIGH-CAPACITY TRANSIT (HCT) MAP DEVELOPMENT UPDATE

Charlene Howard
Tim Canan
TPB Staff

TPB Regional Public Transportation Subcommittee
March 28, 2023

Table of Contents

- HCT Definition
 - What does TPB/COG mean by HCT?
 - HCT as a regional planning tool
 - HCT per the travel demand model
- BRT-focus
 - BRT definition in Visualize 2045
 - Who has BRT and where is it?
 - What is the current situation with our data?
 - What needs to change?
- Next Steps



What is High-Capacity Transit (HCT)?

“HCTs comprise several modes of public transportation, including Metrorail, commuter rail, light rail, streetcar, and bus rapid transit (BRT). Optimizing the areas around HCTs by providing a mix of residential and commercial uses, among other land use strategies, can help the region work toward its shared and interconnected goals in housing, climate, transportation, and equity.”

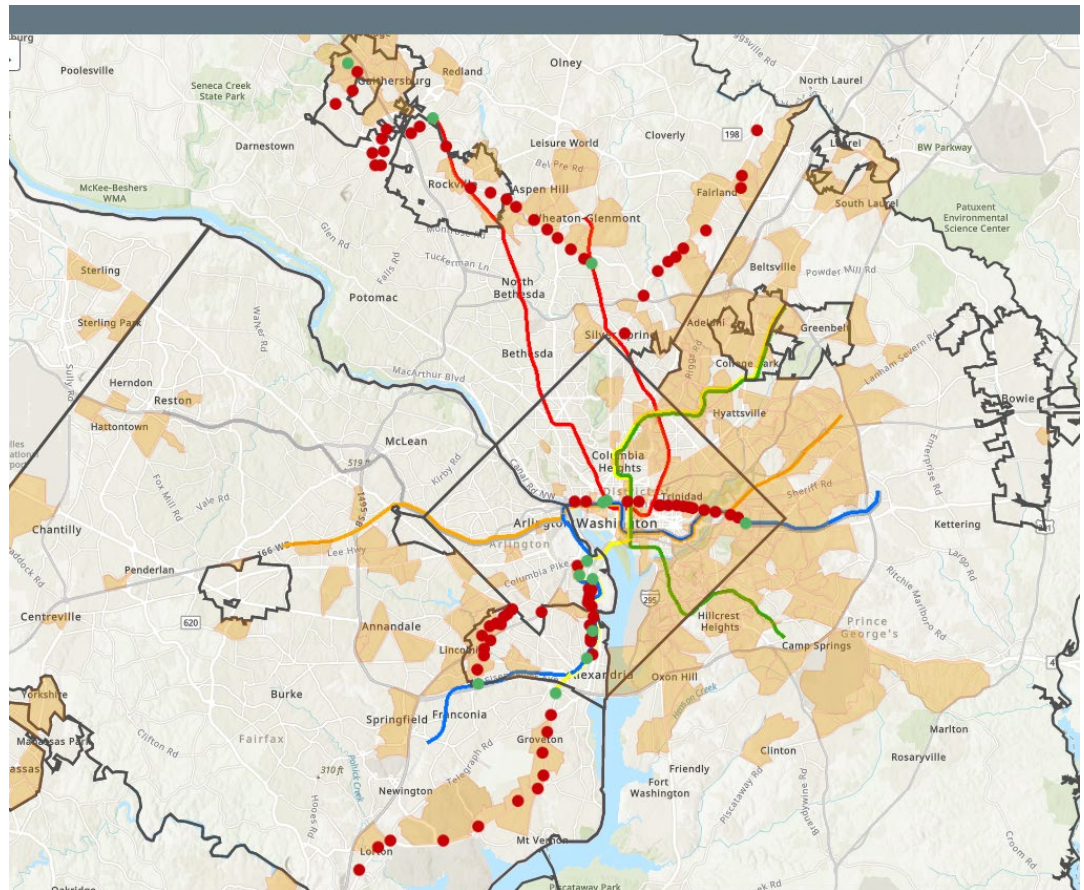
- What does TPB/COG mean by HCT?
 - HCT as a regional planning tool
 - <https://hct-eea-mwcog.hub.arcgis.com/pages/hct-main>
 - Existing HCT and service slated to be operational by 2030
 - HCT per the Travel Demand Model
 - All future service by 2045 that is coded in the network



BRT as HCT

The HCT and Model datasets are essentially the same....except for...you guessed it.....Bus Rapid Transit (BRT)!

“Bus rapid transit, or BRT, is an enhanced, high-frequency service that makes use of transitways and brings together other enhancements that can move more people faster and more reliably than traditional bus services.”



BRT in the TPB region

Jurisdictions with BRT currently or in the future)

- Arlington County
 - Metroway
- City of Alexandria
 - Metroway
 - West End Transitway (2030)
- Fairfax County
 - US 1 BRT (2030)
- Montgomery County
 - US 29 BRT
 - North Bethesda BRT (2025)
 - Veirs Mill Rd BRT (2025)
 - MD 355 BRT (2030)
 - Corridor Cities Transitway (2035)
 - Randolph Rd BRT (2040)
 - New Hampshire Ave BRT (2045)



Bringing our BRT up to date

- The current HCT footprint used by COG/TPB needs to be refreshed; for BRT specifically, we need to do the following:
 - Remove current BRT not operational by 2030 (Corridor Cities Transitway)
 - BRT > 2030 are now operational earlier per the Model; also includes moving dates up for some existing BRT in the HCT
 - Add BRT from the Model dataset to the HCT (2030)
 - Remove BRT in the current HCT data that no longer exist in the Model; this is for years > 2030 so it is not currently in the HCT
- Requires consultation and coordination with COG Planning staff & others for awareness and messaging



Next Steps

- Finalize the data
 - Review the information we have currently
 - What are we missing?
 - WYSIWYG unless we hear otherwise
- We will want your data at some point
 - Model data are good but yours is better (stops and routes)
- Review all HCT for consistency and accuracy
- Develop the final product



Charlene Howard

Manager, Planning Data Resources

(202) 962-3384

Charlene@mwkog.org

Tim Canan

Planning Data & Research Program Director

(202) 962-3280

Tcanan@mwkog.org

mwkog.org/tpb

Metropolitan Washington Council of Governments

777 North Capitol Street NE, Suite 300

Washington, DC 20002



National Capital Region
Transportation Planning Board