



# COG WINTER WEATHER CALL

Maryland Department of Transportation

State Highway Administration

Office of Maintenance

November 1, 2018

# YEAR-ROUND WINTER PLANNING

---



# WINTER PREP – SUMMER

---

- Update Statewide Salt Management Plan
- Finalize New Salt Contracts with DGS
- Repair/Replace Salt Structures
- Repair/Replace Brine Tanks and Components
- Repair/Replace Brine Makers

# WINTER PREP – FALL

---

- Prepare/Finalize Hired Equipment Contracts
- Develop/Finalize Route Plans
- Re-Stock Material Supplies – Salt, Brine, Plow Blades, etc.
- Prepare State Equipment
- Host Hired Equipment Meeting
- Inspect and Calibrate Equipment – State and Hired
- Host Internal Town Meeting
- Complete Snow College for New Hires
- Complete Practice Runs and Route Inspections

# WINTER EVENTS

---

- Monitor Weather
- Participate in Statewide Calls
- Apply Salt Brine as Warranted
- Prepare District/Statewide Plans
- Act on Plans
- Monitor Weather and Pavement Temperatures/Conditions
- Adjust Plans Appropriately
- Clean-Up
- Re-Stock Material Supplies – Salt, Brine, Plow Blades, etc.
- Inspect and Repair Equipment
- Make Roadway Repairs – Potholes
- Repeat!

# WINTER CLEAN-UP – SPRING

---

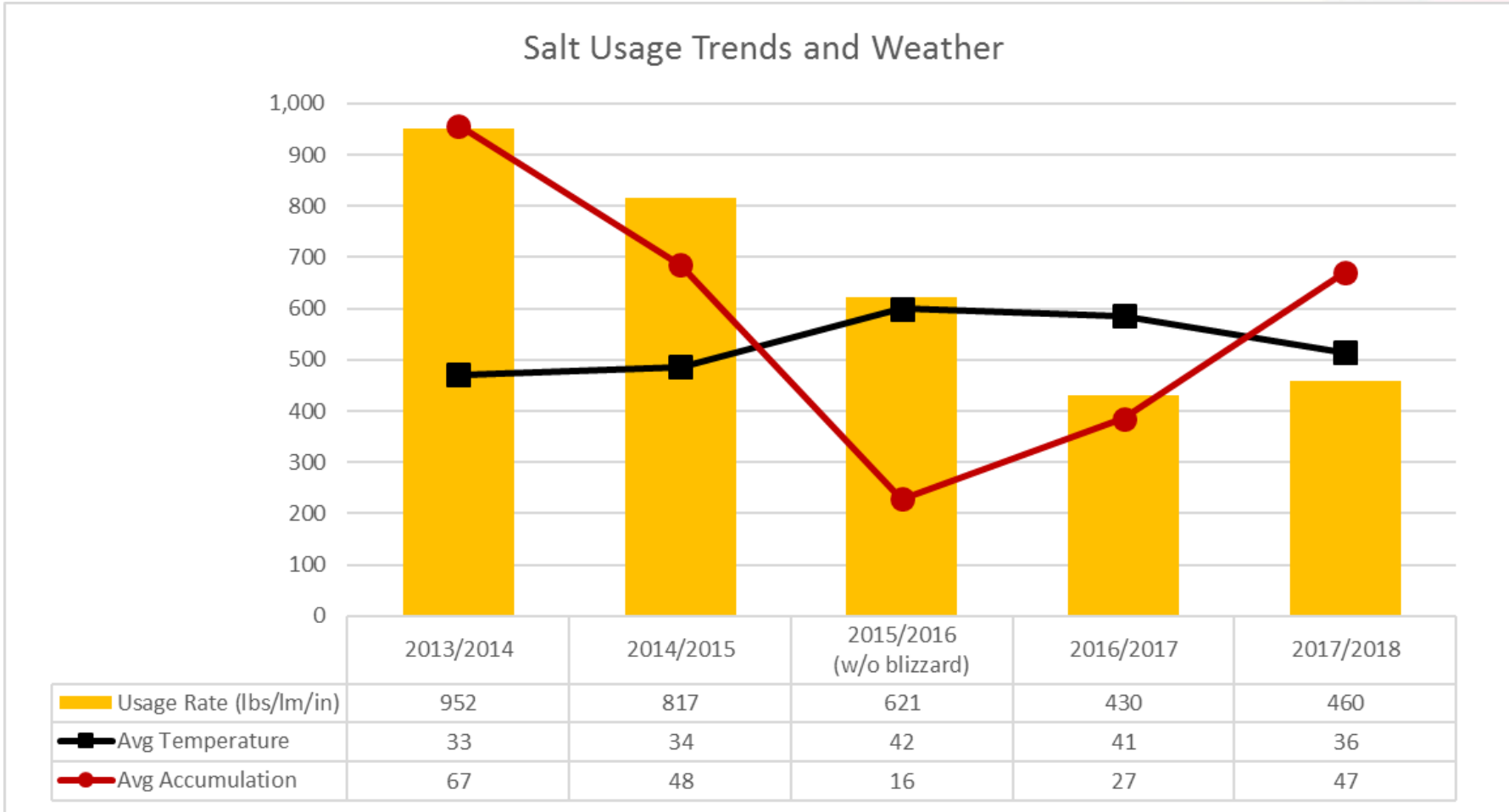
- Assess and Repair Salt Structures
- Re-Stock Salt Supply
- Clean, Inspect, and Repair All Equipment
- Clean Brine Makers and Saddle Tanks
- Assess and Repair/Replace Brine Tanks and Components
- Assess and Repair/Replace Brine Makers
- Perform Route Inspections and Make Roadway Repairs

# TOP ACCOMPLISHMENTS

---

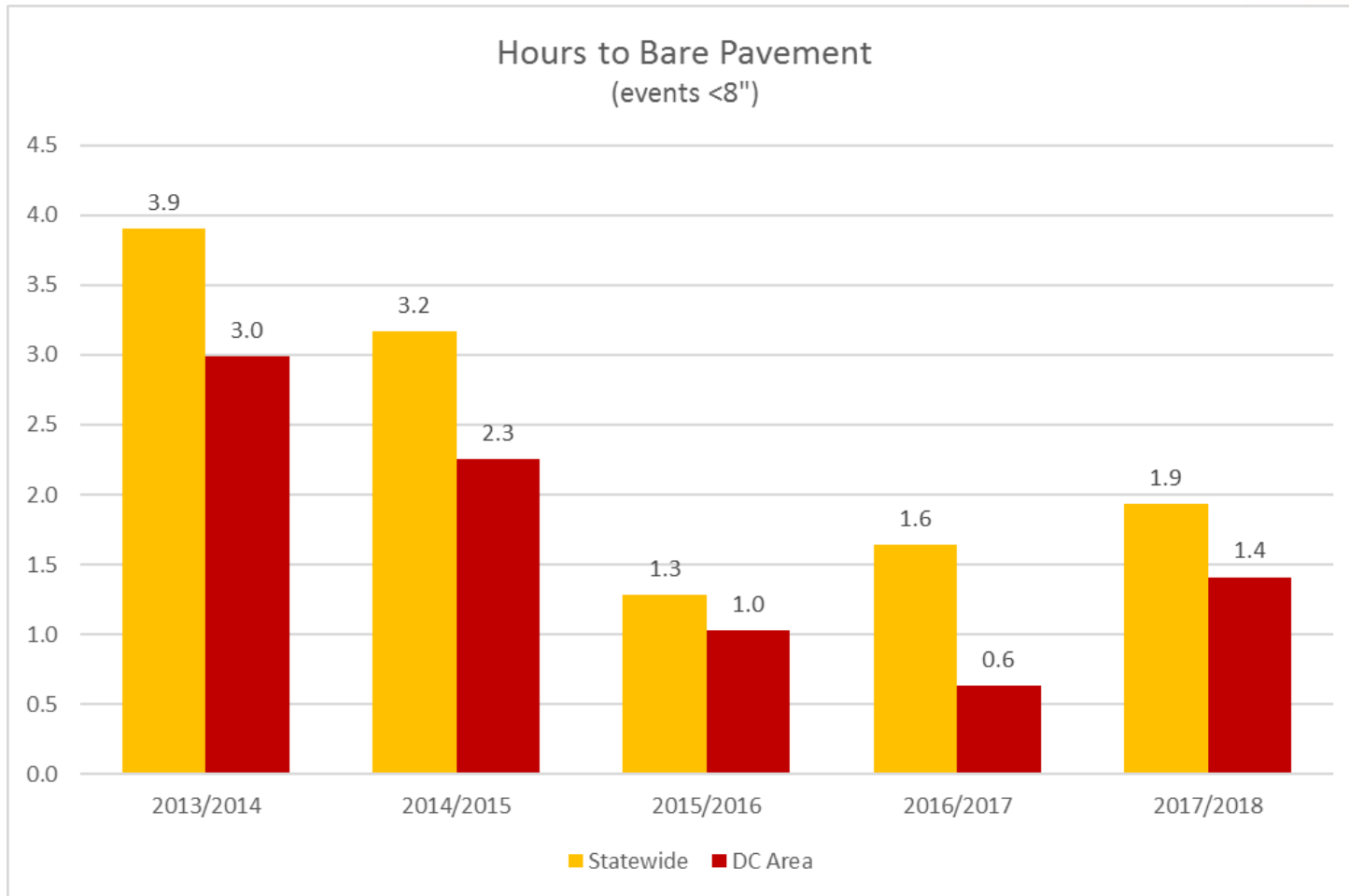
- Reduced Salt Usage by 52% over the past 5 Winter Seasons
- Average 2.4 Hours to Bare Pavement the past 5 Winter Seasons

# SALT USAGE TRENDS/WEATHER





# BARE PAVEMENT



# SOMEWHAT NEW THIS WINTER

---

- New Plow Blades
- Loader Scales
- Additional Contract Anti-Icing Equipment
- Expanded Direct Liquid Application Routes
- Additional Brine Making and Storage Capacity

# BRINE OPERATION

New Brine Maker



Brine Tanks



Brine Application



# NEW THIS WINTER

---

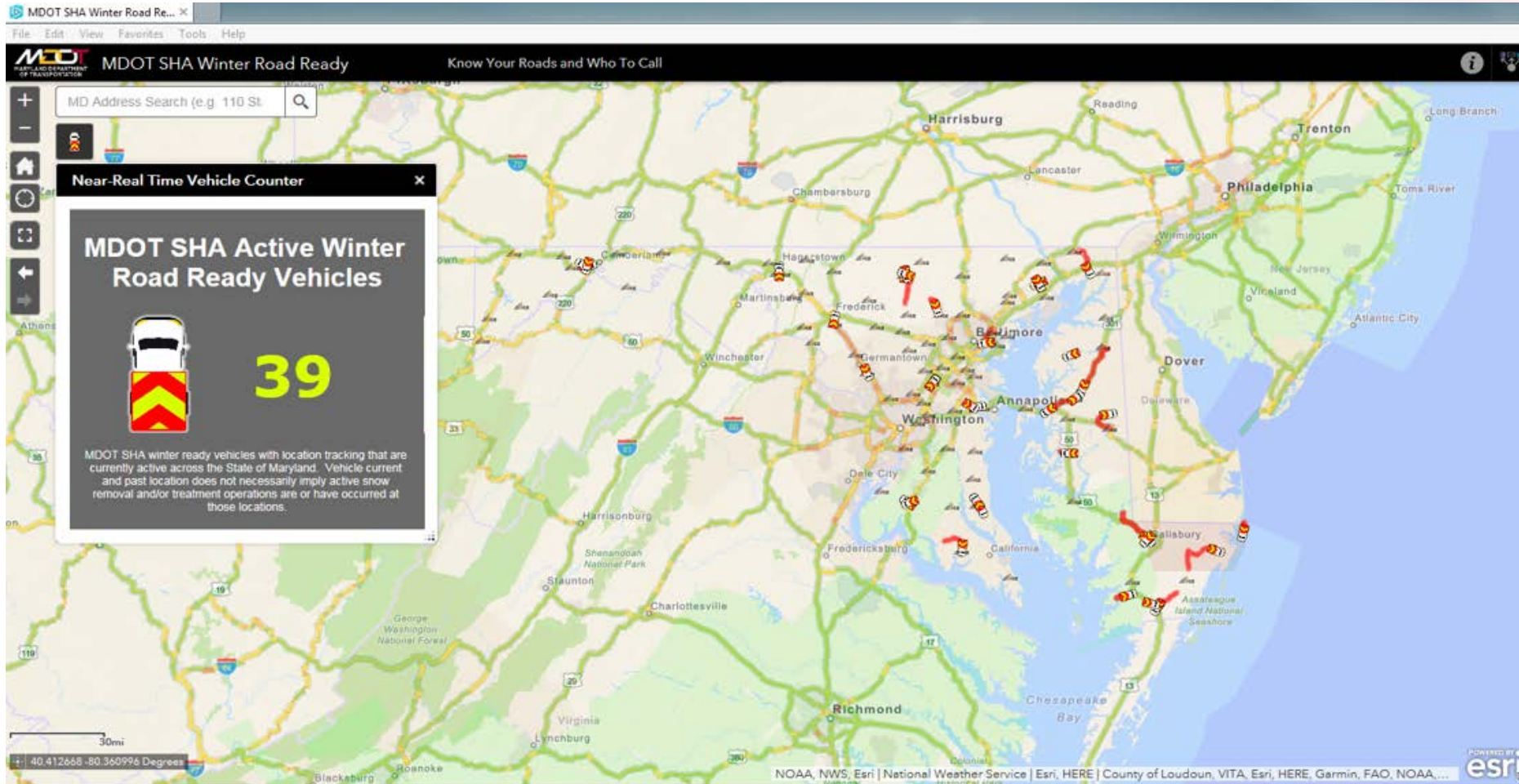
**APP**



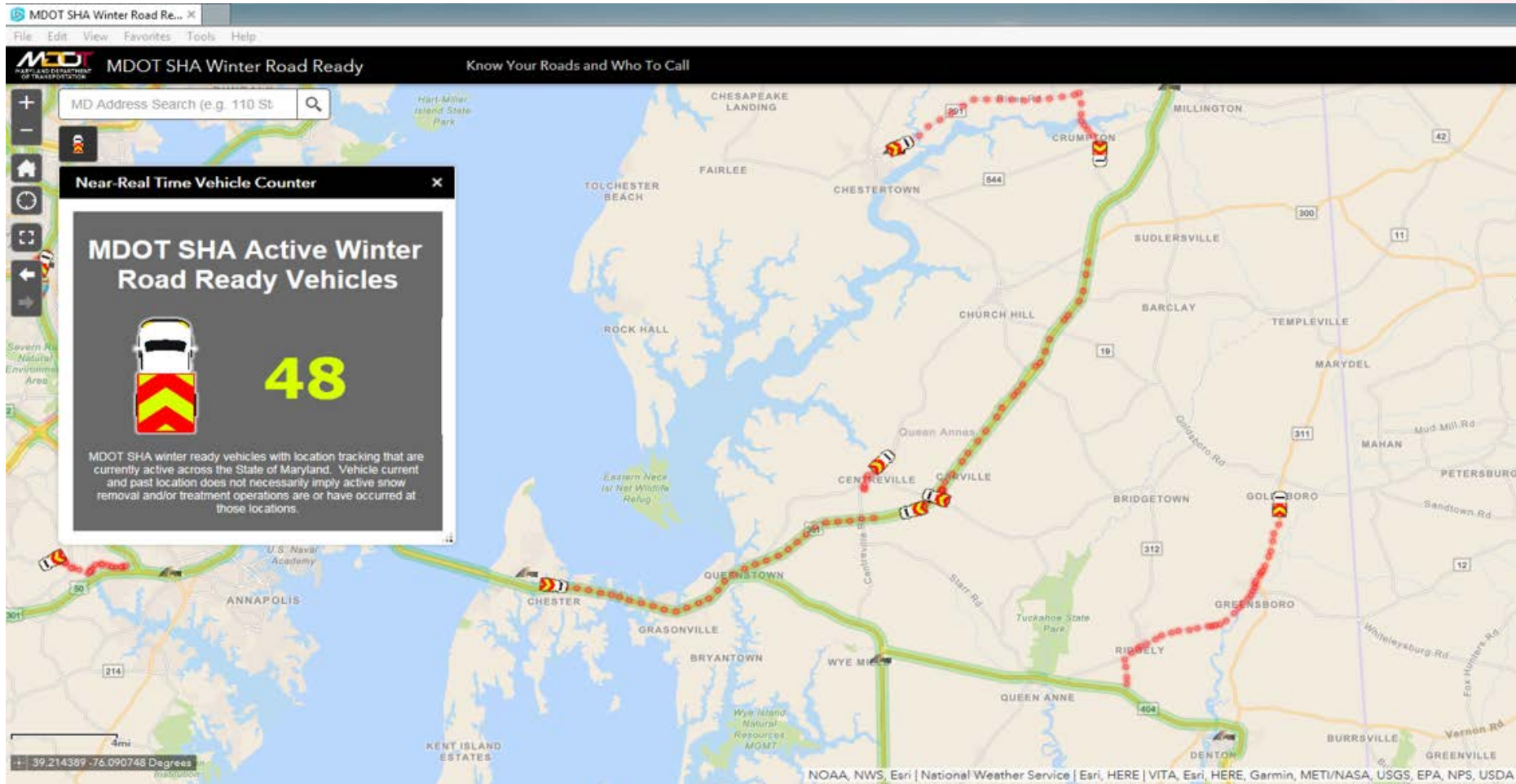
**MDOT**  
MARYLAND DEPARTMENT  
OF TRANSPORTATION

**Winter Road Ready**

# WINTER ROAD READY – PUBLIC



# WINTER ROAD READY – PUBLIC



# WINTER ROAD READY - INTERNAL

MDOT SHA Winter Operations Dashboard

**Dry**  
1150

**Damp/Wet**  
20

**Chemical Wet/Snow/Ice**  
00

**Snow/Ice Warming**  
00

WPL C-506 AT GANTRY S-9  
DEFAULT EB VIEW

Live Video Feed (if video is not streaming please click in frame area above to activate)

Active Snow Ops Vehicles: 410

All Active Vehicles (not including CHART): 960

**MDOT**  
MARYLAND DEPARTMENT OF TRANSPORTATION  
STATE HIGHWAY ADMINISTRATION  
**CHART**

**Incident Events**

- Baltimore City:** debris on roadway @ I-95 SOUTH AT EXIT 53 I 395 CAL RIPKEN WAY (SB), (Updated: 10/12/2018, 9:25 AM)
- Anne Arundel:** accident @ MD 258 AT MD 4, (Updated: 10/12/2018, 9:25 AM)
- Saint Marys:** incident @ MD 249 NORTH/SOUTH AT DRAYDEN RD, (Updated: 10/12/2018, 9:25 AM)
- Anne Arundel:** severe weather @ US 50 EAST/WEST AT MP 33 (BAY BRIDGE)PHASE 1 WIND WARNINGS, (Updated: 10/12/2018, 9:25 AM)
- Baltimore City:** incident @ I-695 INNER LOOP/OUTER LOOP AT MP 49.3 (FRANCIS SCOTT KEY) BRIDGE PHASE 1 WIND WARNINGS, (Updated: 10/12/2018, 9:25 AM)
- Anne Arundel:** flooding @ MD 450 EASTWEST AT HUNTINGWOOD DR, (Updated: 10/12/2018, 9:25 AM)