



How Safe Are Our Roads?

PRELIMINARY ANNUAL DATA REPORT ON THE IMPACT OF DRUNK DRIVING ON ROAD SAFETY IN THE WASHINGTON D.C. METROPOLITAN REGION

JUNE 2016

2014 Data Sources

- National Highway Traffic Safety Administration
- Metropolitan Police Department
- US Park Police (National Park Service)
- MD National Study Center for Trauma and Emergency Medical Systems
- Montgomery County Police Department
- Prince George's County Police Department
- State of Virginia Department of Motor Vehicles
- Arlington County Police Department
- Fairfax County Police Department
- Loudoun County Sheriff's Office
- Prince William County Police Department
- City of Alexandria Police Department
- City of Fairfax Police Department
- City of Falls Church Police Department
- City of Manassas Police Department
- City of Manassas Park Police Department

Summary of Findings

FATALITIES Local alcohol and/or drug-impaired traffic fatalities **increased** by 6.17% between 2013-2014 (from 81 to 86 such fatalities)

- 82 fatalities (does not include National Park data) represents 40.5% of the total number of traffic fatalities (202). The national statistics for US vehicular fatalities in 2014 that were alcohol related is 31%

INJURIES: Regional alcohol and/or drug-related traffic injury data will be included in the final report.

CRASHES: Area traffic crashes attributed to alcohol and/or drugs will be included in the final report.

ARRESTS: Local arrests for either driving under the influence (DUI) or driving while intoxicated (DWI) **decreased** by 5.63% between 2013-2014 (from 17,724 to 16,779 such arrests)

Alcohol-Impaired Traffic Fatalities 2007 – 2014

YEAR	2007	2008	2009	2010	2011	2012	2013	2014	% Change 2013-2014
Washington	16	9	11	7	8	4	10	15	50.00%
MD Regional Total	50	41	39	43	56	34	43	41	-4.65%
Northern VA Total	32	30	23	23	19	27	27	26	-3.70%
DC Metro Regional Total	98	80	73	73	83	65	80	82	2.50%
National Parks in Region	0	1	1	4	0	3	1	4	300.00%
Regional Total Adjusted	98	81	74	77	83	68	81	86	6.17%
National	13,041	11,711	10,759	10,136	9,878	10,336	10,076	9,967	-1.08%

Alcohol-Related Traffic Injuries 2007 – 2014

YEAR	2007	2008	2009	2010	2011	2012	2013	2014	% Change 2013-2014
Washington	264	96	385	92	137	139	228	263	15.35%
MD Regional Total	1,271	977	1,238	1,105	930	923	790	N/A**	N/A**
Northern VA Total	1,249	1,237	1,182	1,114	1,112	1,186	1,123	1,050	-6.50%
DC Metro Regional Total	2,784	2,310	2,805	2,311	2,179	2,248	2,141	N/A**	N/A**
National Parks in Region	43	42	38	62	41	51	51	N/A	N/A

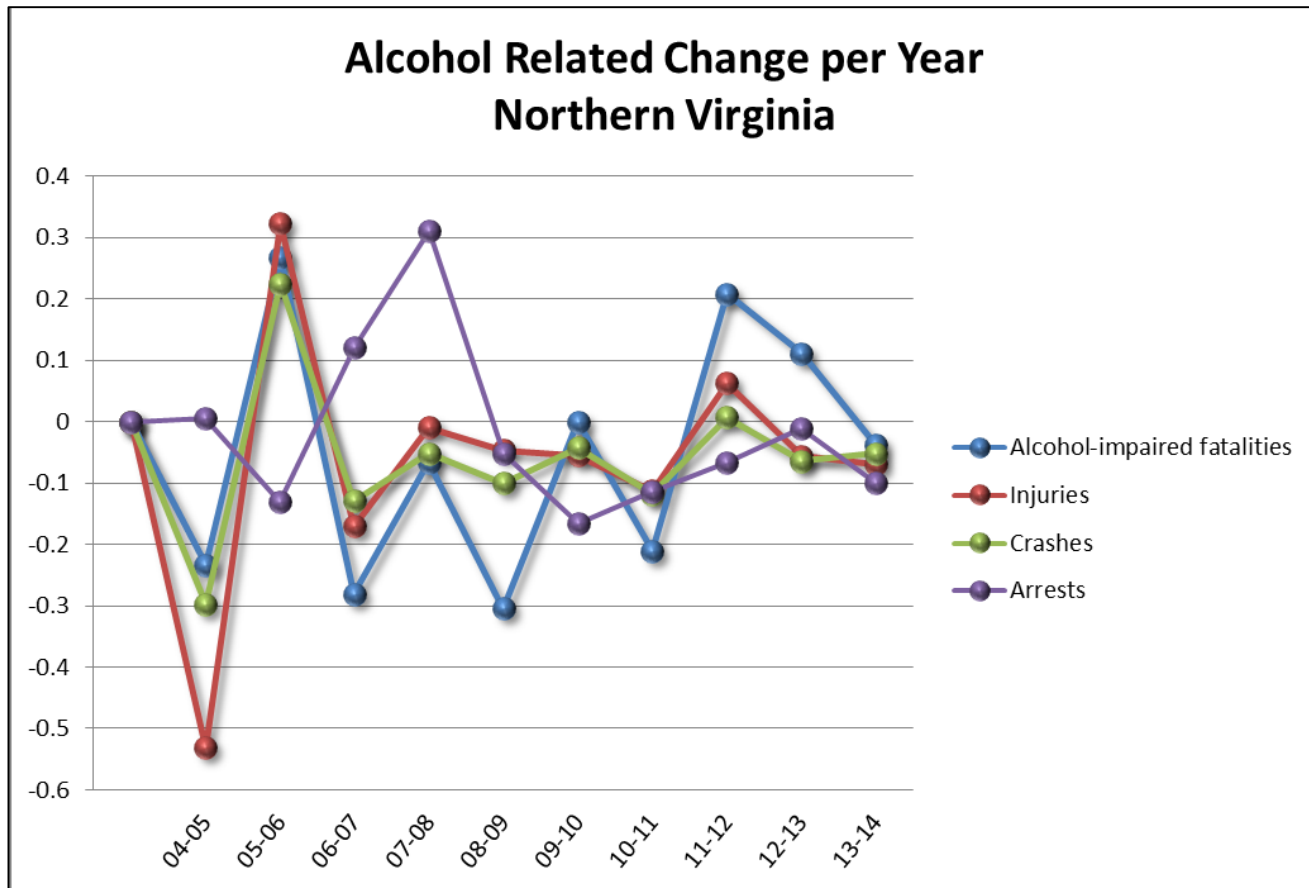
Alcohol-Related Traffic Crashes 2007 – 2014

YEAR	2007	2008	2009	2010	2011	2012	2013	2014	% Change 2013-2014
Washington	264	132	562	542	558	564	657	682	3.81%
MD Regional Total	2,406	1,595	2,453	2,162	1,755	1,717	1,639	N/A**	N/A**
Northern VA Total	2,236	2,125	1,932	1,841	1,901	1,914	1,799	1,711	-4.89%
DC Metro Regional Total	4,906	3,852	4,947	4,545	4,214	4,195	4,095	N/A**	N/A**
National Parks in Region	109	94	88	92	101	94	51	N/A	N/A

Alcohol-Related Traffic Arrests 2007 – 2014

YEAR	2007	2008	2009	2010	2011	2012	2013	2014	% Change 2013-2014
Washington	2,224	1,655	1,555	1,648	2,081	1,340	1,498	1,501	0.20%
MD Regional Total	5,301	4,521	4,628	4,063	3,856	6,580	7,297	6,861	-6.35%
Northern VA Total	6,995	10,158	9,643	7,956	9,114	8,544	8,442	7,677	-9.96%
DC Metro Regional Total	14,520	16,334	15,826	13,667	15,051	16,464	17,237	16,039	-7.47
National Parks in Region	634	614	593	689	1,027	877	487	740	34.19%
Regional Total Adjusted	15,154	16,948	16,419	14,356	16,078	17,341	17,724	16,779	-5.63%

Sub-Regional Trends: Northern VA (2013-2014)



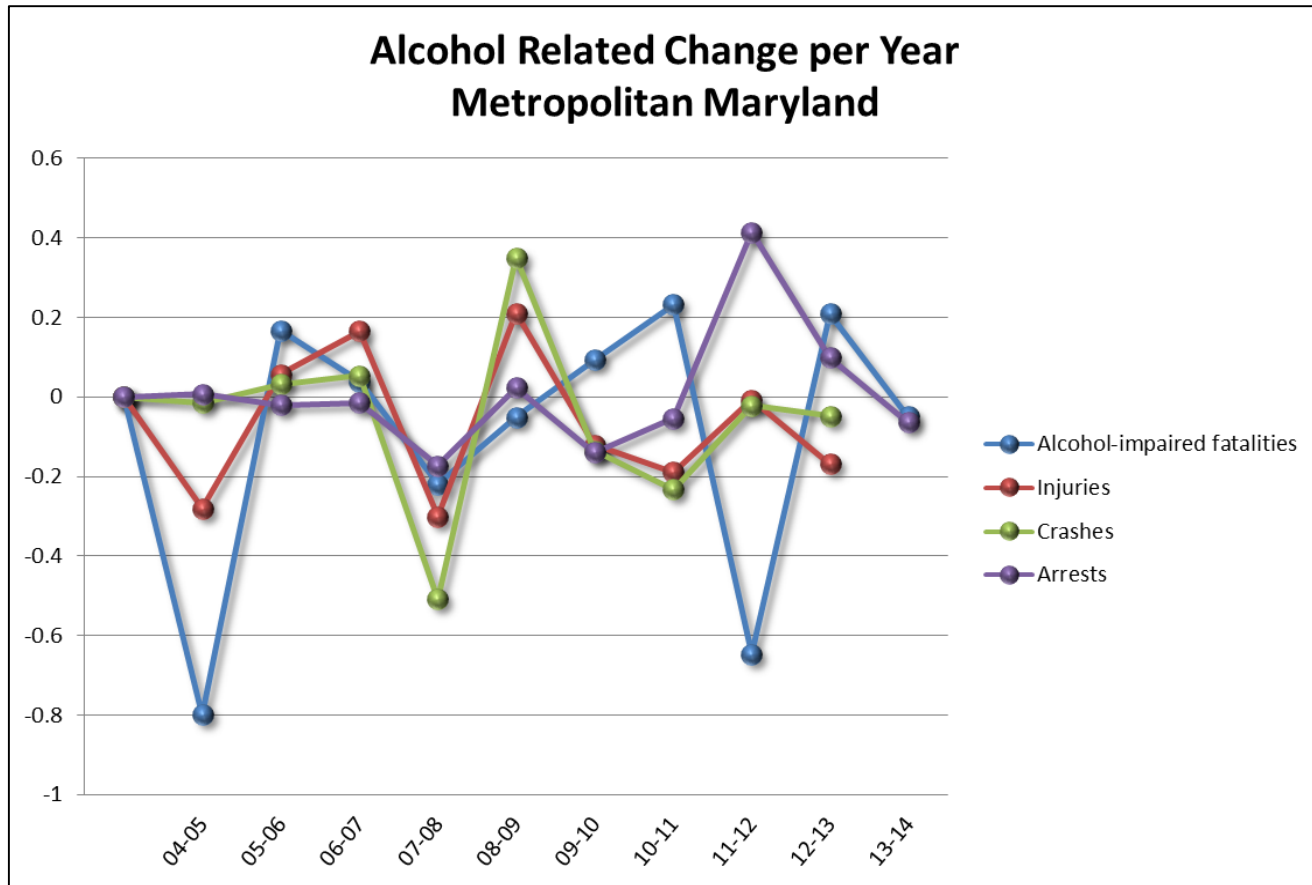
Percent Change between 2013-2014

- Total Traffic Fatalities: -12.05%
- Alcohol-Impaired Traffic Fatalities: -3.70%
- Injuries: 3.98%
- Alcohol-Related Traffic Injuries: -6.50%
- Crashes: 1.88%
- Alcohol-Related Traffic Crashes: -4.89%
- Alcohol-Related Traffic Arrests: -9.96%

2014 Youth Data (Under 21 Years of Age)

- % of Alcohol-Related Fatalities: 57.14
- % of Alcohol-Related Crashes: 3.77%
- % of Alcohol-Related Injuries: 5.76%
- % of Alcohol-Related Arrests: 1.67%

Sub-Regional Trends: Maryland (2013-2014)



Percent Change between 2013 and 2014

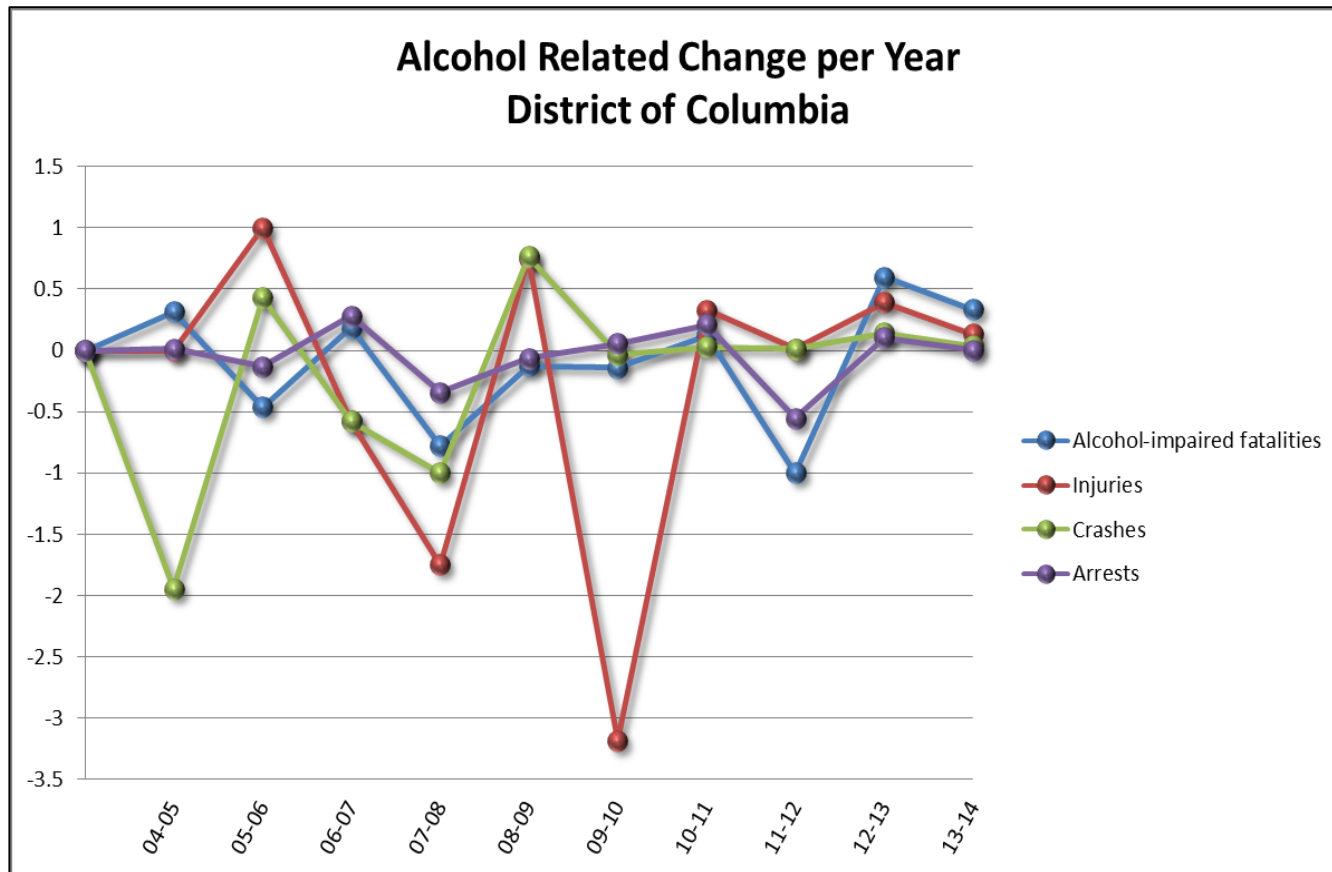
- Total Traffic Fatalities: -19.53%
- Alcohol-Impaired Traffic Fatalities: -4.65%
- Injuries: 6.54%
- Alcohol-Related Traffic Injuries: N/A*
- Crashes: 9.44%
- Alcohol-Related Traffic Crashes: N/A*
- Alcohol-Related Traffic Arrests: -6.35%

2014 Youth Data (Under 21 Years of Age)

- % of Alcohol-Related Fatalities: 36.36%
- % of Alcohol-Related Crashes: N/A
- % of Alcohol-Related Injuries: N/A
- % of Alcohol-Related Arrests: 1.72%

* Data Pending

Sub-Regional Trends: District of Columbia (2013-2014)



Percent Change between 2013 and 2014

- Total Traffic Fatalities: -10.34%
- Alcohol-Impaired Traffic Fatalities: 50%
- Injuries: 7.87%
- Alcohol-Related Traffic Injuries: 15.35%
- Crashes: 6.60%
- Alcohol-Related Traffic Crashes: 3.81%
- Alcohol-Related Traffic Arrests: 0.20%

2014 Youth Data (Under 21 Years of Age)

- % of Alcohol-Related Fatalities: 66.67%
- % of Alcohol-Related Crashes: 1.72%
- % of Alcohol-Related Injuries: 2.38%
- % of Alcohol-Related Arrests: N/A

WRAP Contact Information

Kurt Gregory Erickson, President & CEO

Washington Regional Alcohol Program (WRAP)

tel 703.893.0461

email kurt@wrap.org