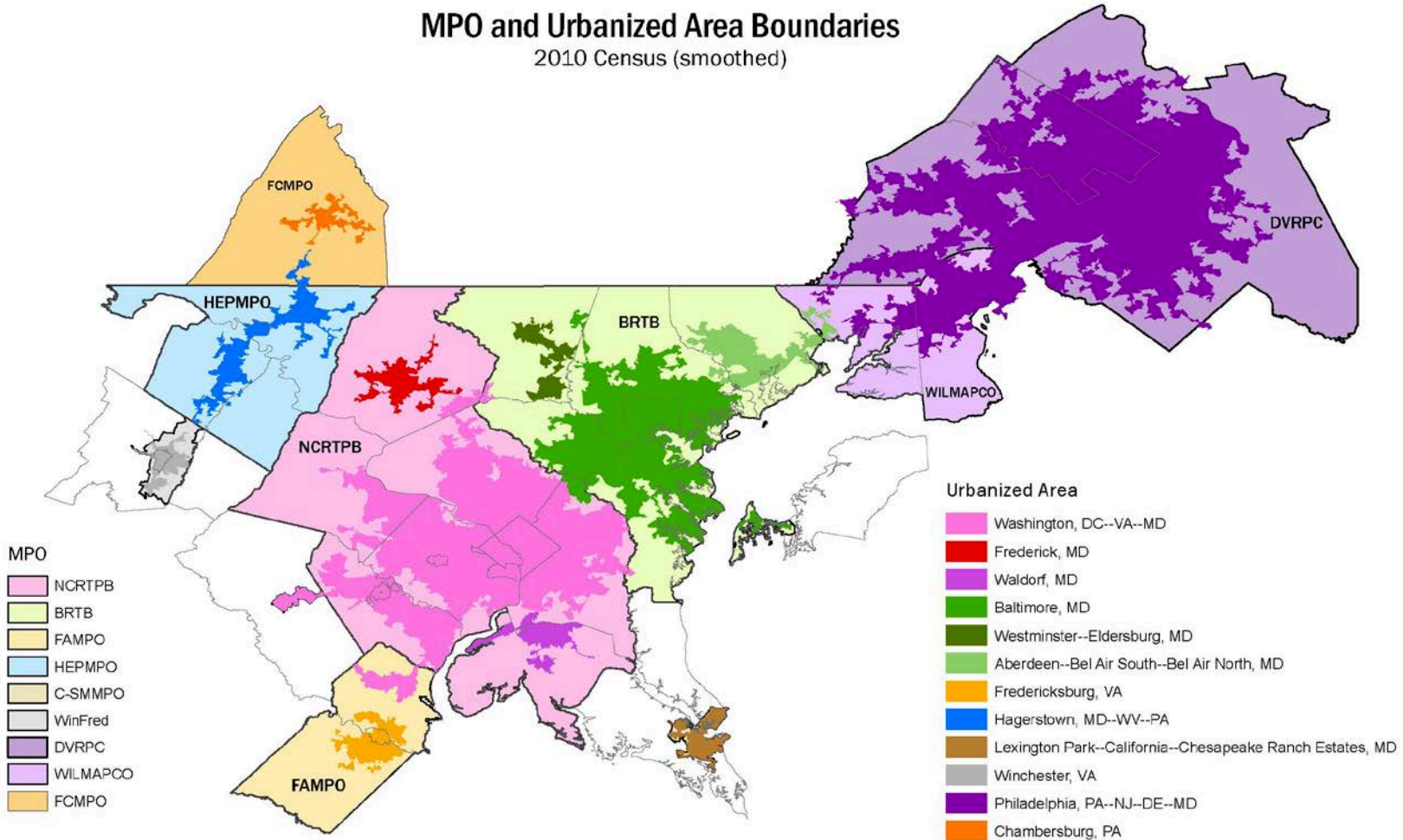
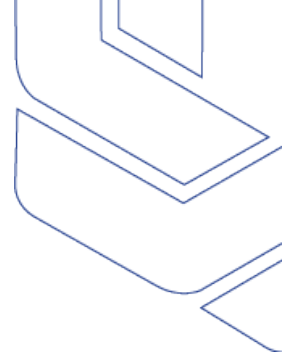


Baltimore Regional Transportation Board (BRTB)

MPO and Urbanized Area Boundaries
2010 Census (smoothed)



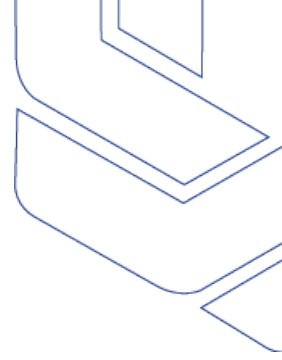
Baltimore Regional Transportation Board (BRTB)



- 13 Member MPO Board (9 voting, 4 non-voting*)
 - Anne Arundel, Baltimore, Carroll, Harford, Howard & Queen Anne's* Counties
 - Cities of Annapolis & Baltimore
 - State Agencies (MDOT, MDP*, MDE*, MTA*)
 - Representative of Public Transit (Harford Transit)

Population	2010	2040	Chg	% Chg
Baltimore Region	2,684,787	3,064,183	379,396	14.1%
Washington DC Region	5,052,848	6,665,330	1,612,482	31.9%
Employment	2010	2040	Chg	% Chg
Baltimore Region	1,516,318	1,918,789	402,471	26.5%
Washington DC Region	2,997,743	4,125,017	1,127,274	37.6%

Baltimore Regional Transportation Board (BRTB)

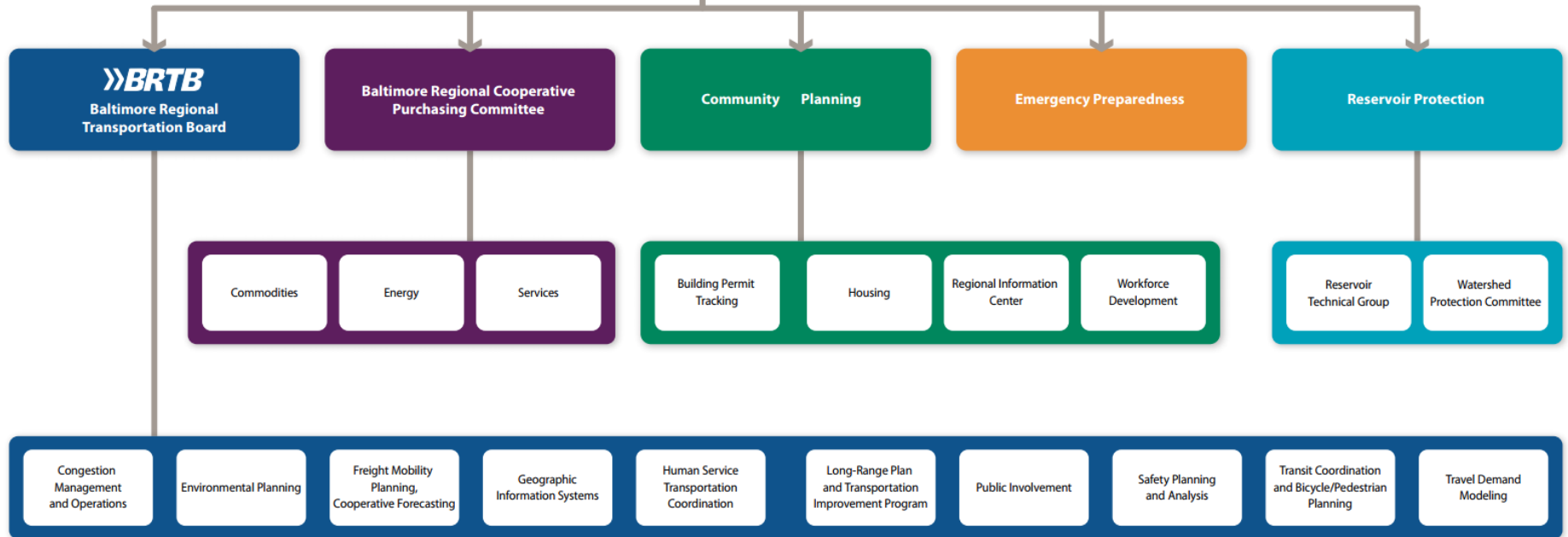


- BRTB Subcommittees
 - Technical Committee
 - Public Advisory Committee
 - Interagency Consultation Group (Air Quality)
 - Cooperative Forecasting Group
 - Freight Movement Task Force
 - Bicycle and Pedestrian Advisory Group
 - Safety Subcommittee
 - Traffic Incident Management for the Baltimore Region (TIMBR)
 - Traffic Signal Subcommittee
 - Transportation and Public Works
 - Ad Hoc (Point to Port Workgroup)

Baltimore Metropolitan Council (BMC) and the BRTB



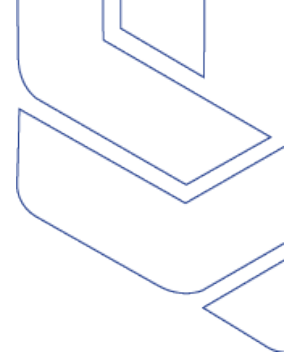
Baltimore Metropolitan Council



Baltimore Metropolitan Council



Thank you



BRTB Chair

Howard County Executive

Allan H. Kittleman

BMC Director of Transportation

Todd Lang

