



Cross- National

WEBINAR
Perspectives About Local
Emergency Response

May 18
2022

150+1
berufsfeuerwehr
aachen

stadt aachen


Aachen

Living Europe

The westernmost city in Germany is one Independent city within the Aachen County.

Direct neighborhood to the kingdoms from Belgium and the Netherlands.

Population 260.500

Area 62,15 sq.mi.

Neighborhoods 10

UNESCO-World Heritage Aachen Cathedral

Events The international
Charlemagne Prize
CHIO



Foto: NordNordWest



Aachen Fire Department

Est. 1836 | 1871

It is divided into a professional Fire Dept. with four fire stations and a volunteer Fire Dept. with twelve locations.

488 civil servants 27 employees

80 functions in 24/7

460 volunteers

SRG, CISM-Team, tele-emergency physician,
Fire Academy + driving school, EMRIC, ARS

Responsible for the emergency medical service in Aachen and the fire/rescue emergency communication centre services for 9 other cities (555.465).

Aachen Fire Department

Budget

The annual budget for the FD is divided into four items

• Fire & rescue	42.062.900€	45.600.390\$
• Civil protection	1.417.800€	1.537.040\$
• 112 call centre	1.245.400€	1.350.140\$
• EMS	29.408.700€	31.881.970\$
<hr/>		
Total	74.134.800€	80.369.540\$



Foto: Stadt Aachen / Stefan Herrmann

EMRIC

When every second counts, fast assistance is vital

EMRIC is a unique collaboration of public services, that are responsible for public safety, including fire services, technical assistance and emergency medical care in their respective territories.

In a region that is so rich of borders, like the Euregion Meuse-Rhine, emergency services from abroad can often be at the scene of the incident faster than own services.



Grafik: Stadt Aachen

1km = 0,62mile

www.emric.info



- The initiation and coordination of scientific research and development projects in the field of pre-hospital emergency and rescue medicine
- The initiation and coordination of scientific research and development projects in the field of non-police security and civil security
- The translation of scientific results into prehospital routine care
- Further development and evaluation of quality assurance instruments
- The training and further education of physicians and non-physicians emergency service personnel





Foto: Stadt Aachen / Andreas Herrmann

Aachen Fire Department

Organizational structure

Senior Fire Director Jürgen Wolff

For fire protection and assistance, the municipalities maintain efficient FD as municipal facilities that correspond to the local conditions.

Non-police averting danger is the task of the municipalities. This acts according to the law at state level.

Medical emergency service in Germany is financed by all health insurance and is renegotiated at regular interval.



FD expire:

in 90%

1st step 10 functions in 8 min

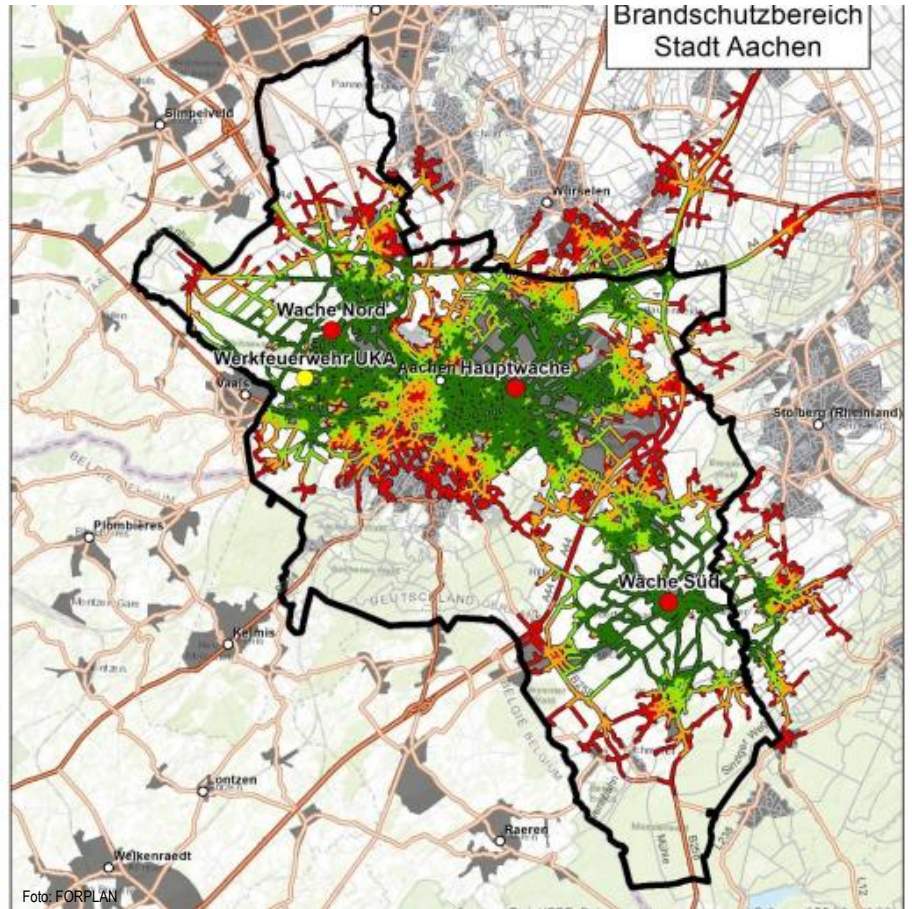
2nd step 16 functions in 13 min

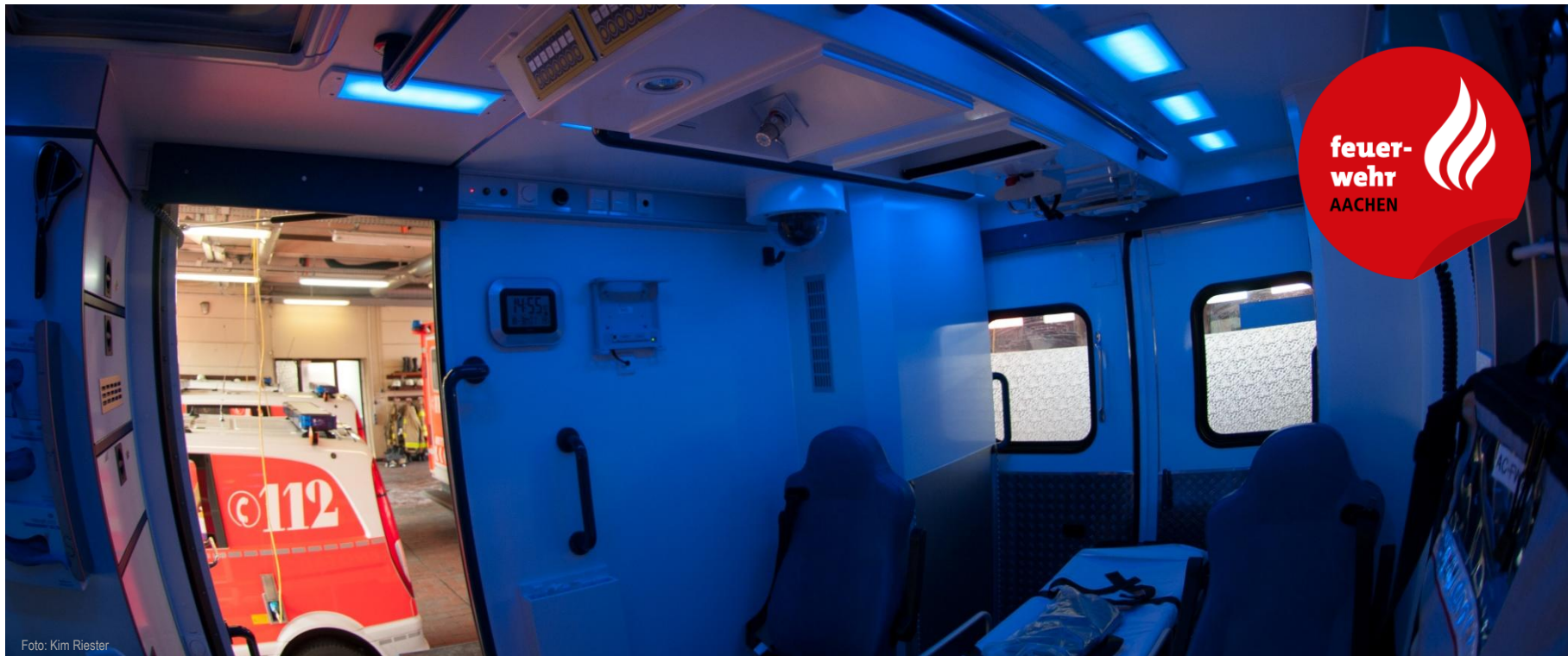
both after emergency call

Fire protection requirements plan

Investigation of reaching the urban area with a driving time simulation based on a digital geo-information system.

arrive on time for built up areas within 8 min					
	total	provided	%	undersupplied	%
Prof. FD	19,87 sq.mi.	14,78 sq. mi.	76,3	4, 59 sq. mi.	23,7
Prof.+ Vol.	19,87 sq.mi.	15,33 sq. mi.	79,1	4,04 sq. mi.	20,9

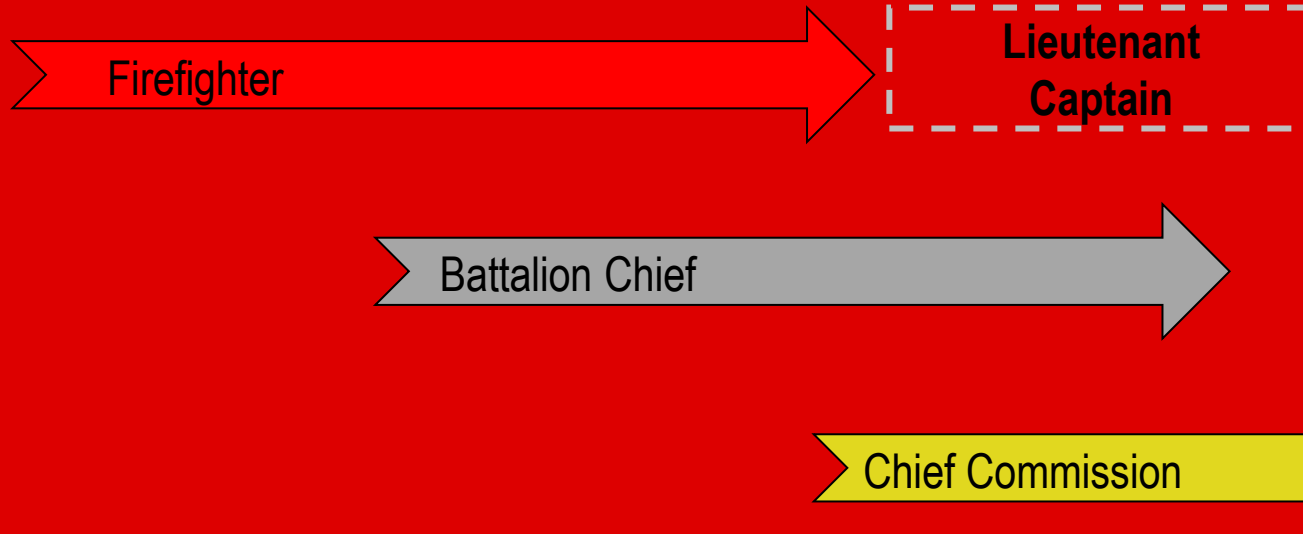




Emergency medical service expire: in 90% 6 minutes after emergency call to the arrival of first qualified intervention

Fire Academy

Three path of career





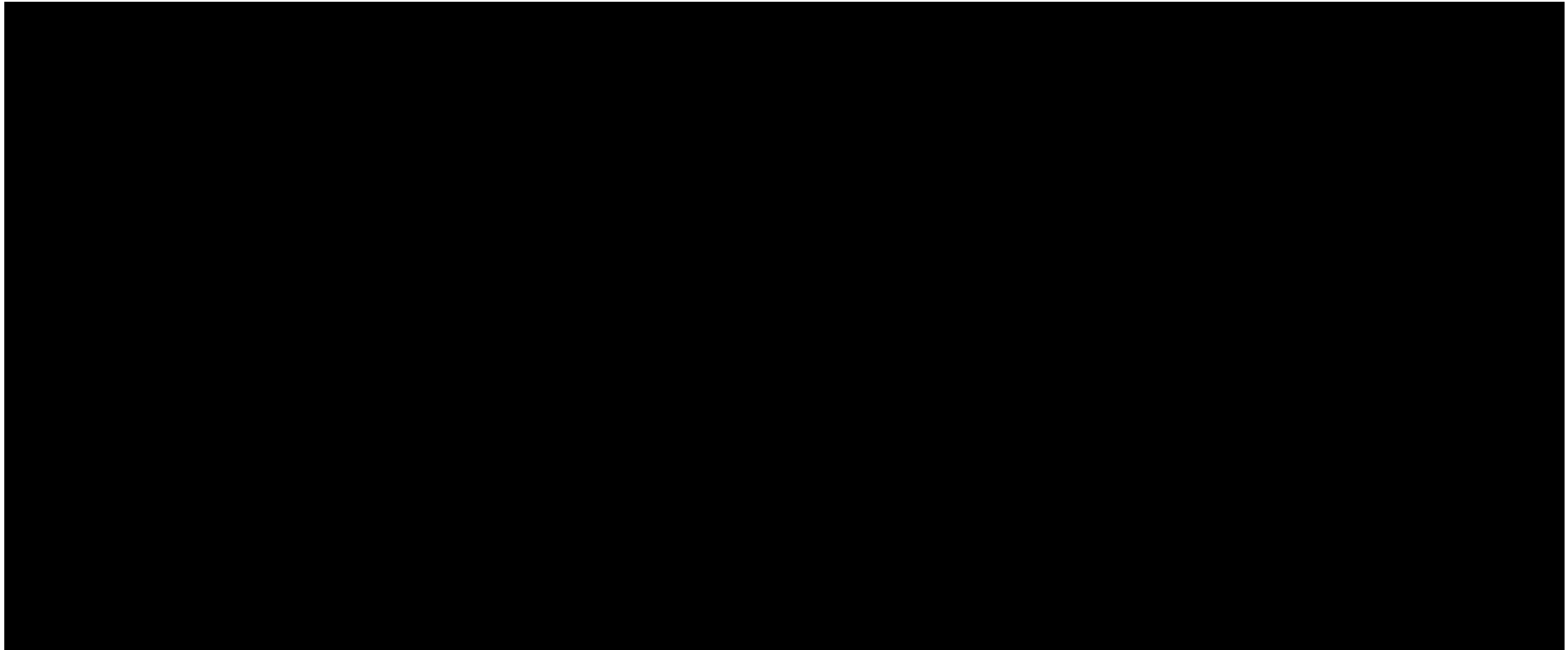
Aachen Firefighter in climate change

prevention | acute phase | lessons

Aachen Firefighter in climate change

Specialized area concept (storm, flood, snowfall, heavy rain...)

- Prevention
 - Concept for the special alarm sequence and extended management organization in order to be able to process emergency situations by Volunteer FD.
 - Around the clock, at least 3 platoons actively engaged in storm response, 1 platoon in tactical reserve, and 8 platoons at rest.
 - Changing system every 4-6 hours to ensure at least 12 hours of rest time.
 - Procurement of special material and vehicles.
 - Provision of sandbags in transportable boxes to ensure rapid intervention.
 - Predefined points in the forest where a portable pump has to be stationed for long hose stretches.



Video: Christian Beek

Flood 2021

Sandbag filling machine | 1.000 sandbags per hour





Climate change

Homework for the FD of the future

- Acute phase
 - Fast, all-terrain reconnaissance vehicles to scout and prioritize the scene at an early stage.
- Lessons
 - Procurement/upgrading of all-terrain deep mudable vehicles with multifunctional use (rescue/material supply/warning).









www.foto.de



cm-foto.de



Michaleki



cm-foto.de



Arlington & Aachen

... more similarities than the first and last letter in the city name