

ITEM 9 - Information
December 16, 2015

Discussion on the Roles by
Which the TPB Can Support Metro

Staff

Recommendation: Receive briefing

Issues: None

Background: This is a follow-up discussion on the constructive role the Board and local jurisdictions can play to support WMATA now and in the future. It builds on WMATA's November presentations on the fundamentals of Metro, the Capital Improvement Program, and Metro's strategic plan, Momentum. Key recommendations will be reviewed to spark a conversation on how TPB, local jurisdictions, and WMATA can move forward. Specific items include Metro as a regional system in a local environment for funding, land use, and transportation priorities; how the TPB's products and processes (CLRP, RTPP) impact regional outcomes; and areas for cooperation including MetroAccess alternatives, priority for Metrobus, and Metrorail station land use/development and bike/pedestrian access improvements.



Washington Metropolitan Area Transit Authority

TPB Support of Metro: Today, Tomorrow and Beyond

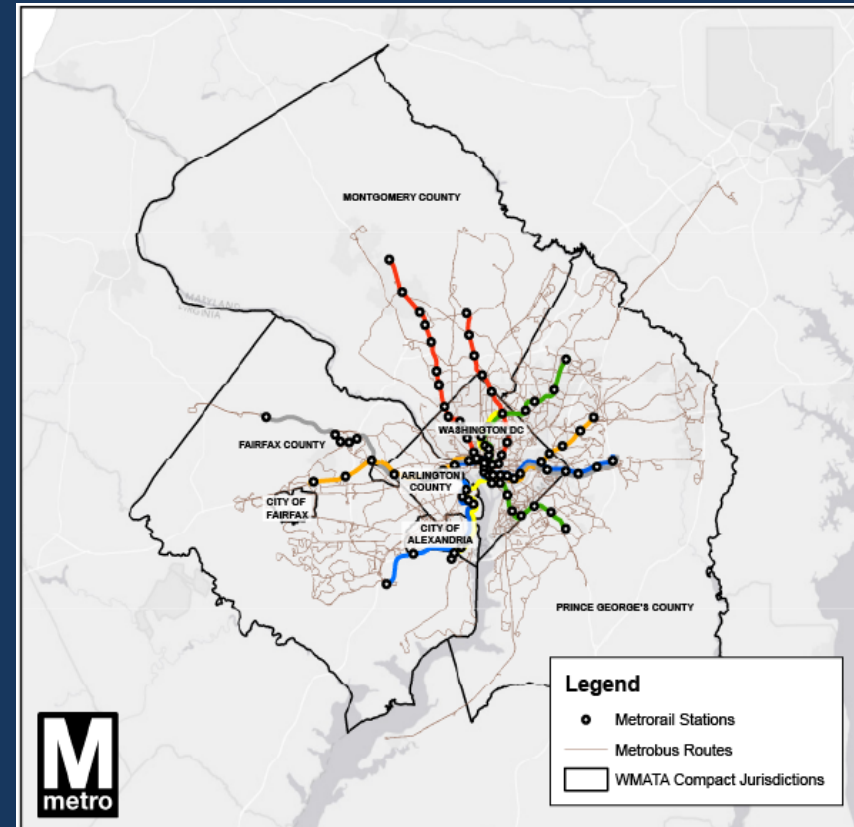
Presentation to the National Capital Region Transportation Planning Board

December 16, 2015



Metro's Fall 2015 TPB Presentations

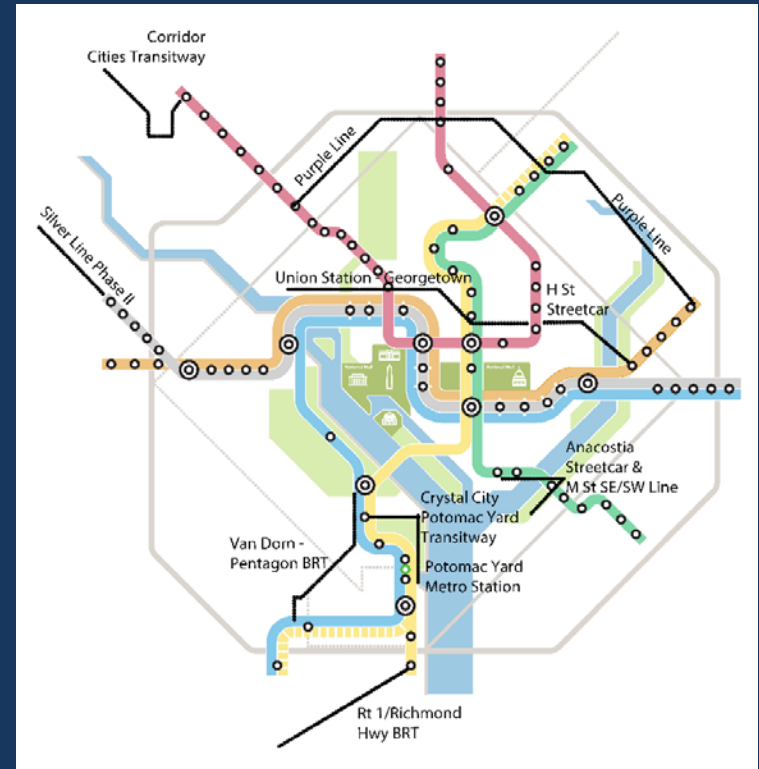
- November:
 - Metro Fundamentals
 - Momentum
- December:
 - How can TPB support Metro





Recap of Main Capital Challenges

- One year capital budget with no predictable funding stream
- Uncertainty of federal funding
- Competing needs for future funding
- Metro is the “C” in the Constrained Long Range Plan (CLRP)

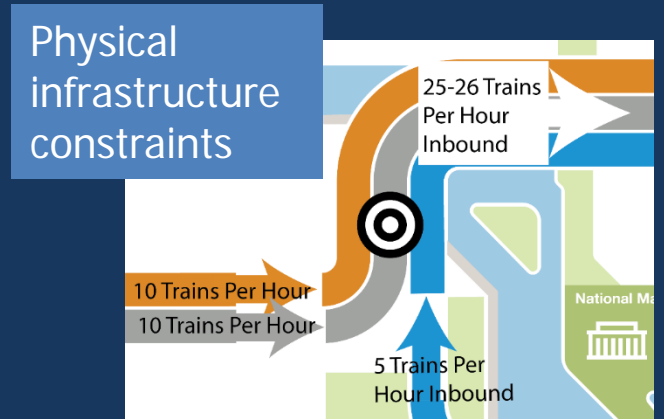
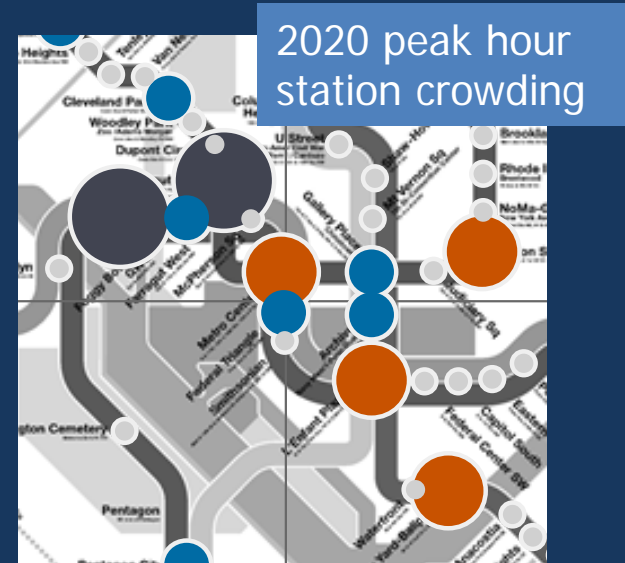


2015 CLRP Transit Projects



Recap of Main Operating Challenges

- Growth of operating costs greater than revenues
- Crowded core impacts safety, reliability, and efficiency
- Degraded bus operations due to traffic
- Rail network ill-equipped for expansion or service changes
- Increased transit-oriented development, but struggling to serve today's demand



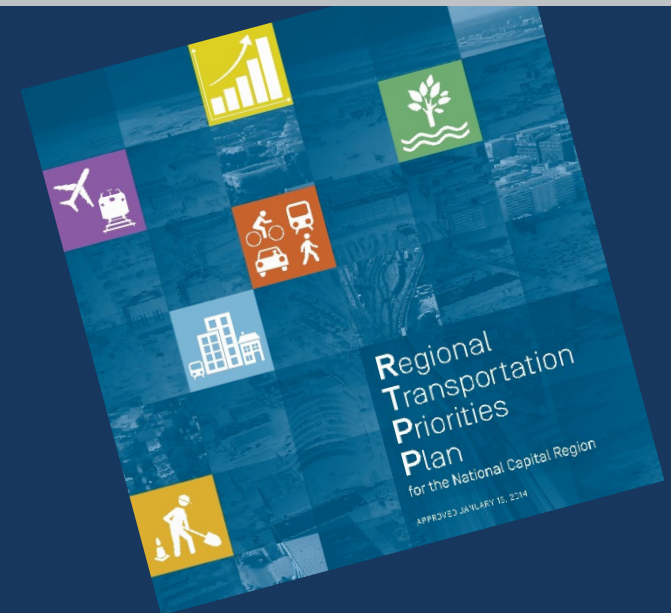


How Can TPB Support Metro: TPB Plans and Processes

- Think regionally, act regionally
- Find a path forward to include WMATA projects in CLRP beyond safety and state of good repair
- Advance TPB's Vision Goal 7
- Promote land use thinking in transportation planning

Financially Constrained
Long-Range
Transportation Plan
For the National Capital Region

CLRP 2015

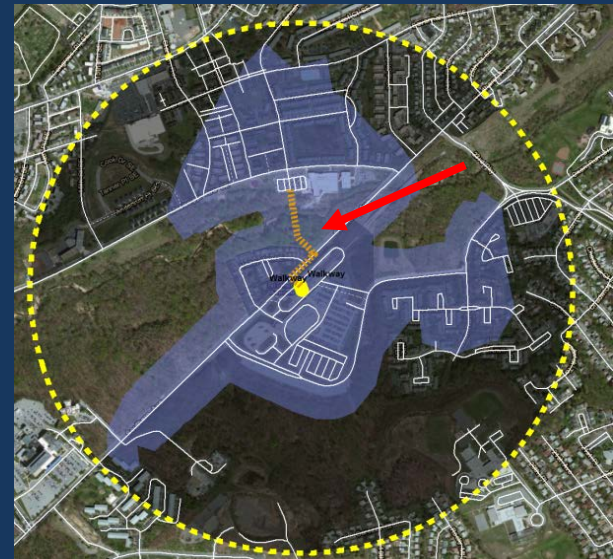




How Can Jurisdictions Support Metro

- Maximize TOD opportunities
- Prioritize bicycle and pedestrian investments
- Advance bus priority measures on local streets and highways
- Address MetroAccess growth comprehensively

Southern Avenue Station: 1,200 ft long path = \$300K in increased revenue from ridership





How Can Jurisdictions Support Metro

- Encourage negotiation and signing of capital funding agreement (CFA)
- Ensure clarity of:
 - Transit benefit discrepancy
 - Annual Passenger Rail Investment and Improvement Act (PRIIA) appropriation
 - Expiration of funding levels after 2019





Questions & Discussion